

REETH & DISTRICT GAZETTE

Issue N°1

August 1995

Stef's Models move to new workshops

Monday 7th August will be a RED LETTER DAY for everyone at Stef's when the business transfers its production to the new Reeth Dales Centre in Silver Street. "These expansion plans have become necessary to cope with increased demand for our products" said Stef Ottevanger, who together with husband Steve established their business designing and manufacturing animal figures at Grinton in 1985. "This is a very exciting phase in the development of our business," said Steve "and coincides with major technical developments which will enhance our products." The business has grown steadily over the years and the team now totals 20. There are about 200 items in the range of animal figures and wall plaques. The new location will be laid out so that the public will be able to see the skilled team at work and there will be a chance for visitors to purchase items from the display area.

Opening times will be 9am - 4pm
Mondays - Saturdays

The company is retaining much of its current site at Anvil Square for storage, packing and Dispatch.

THANKS

The committee of Reeth Thursday Club would like to thank all members and friends who supported the coffee evening held in aid of Cancer Relief, when £184.50p was raised.

Reeth Brass Band

Mr. R. Woodward retires as Band Conductor and Band Master. Peter Cuff has kindly accepted the challenge as conductor and Michael Blenkiron will be Band Master.

Coming up in September the band will tackle the challenge of the Hardraw Scar contest.

QUIZ

E	S	P
P	A	E
R	W	N

See if you can make 50 words of four letters or more using each letter only once. The letters also make a nine letter word, what is it? Small prize for the first complete correct entry drawn. Drop in your entries to the Post Office by 21st August.

CONGRATULATIONS!

At the recent Associated Board of Music examinations held at the Richmond Centre, Victoria Lundberg gained a credit pass on Alto Saxophone Grade 3 and a pass on French Horn Grade 4.

Rebecca Lundberg gained a pass at Grade 4 on the Flute.

MAGIC IN THE AIR



There'll be 'Magic in the Air' at libraries across North Yorkshire this summer. An amazing 112 hours of entertainment for 5-11 year olds, there families and friends has been lined up by the County Library staff, it began on Monday July 24th and will run throughout the summer.

Jane Scatchard, Principal Librarian: Special Services, said "We aim to make this our liveliest and most entertaining summer programme ever."

Fourteen events are planned for the Hambleton and Richmondshire area, including four performances of tales from the 1001 Arabian Nights, by spellbinding storyteller Joan Barr. There is an admission charge for these sessions of £1 per child.

The mobile library, as part of two 'drop-in events', will be in attendance at Reeth Memorial Hall on August 14th, 10am - 12 noon. There will be storytelling, crafts, magic tricks, face painting and a book sale of ex-library stock.

Similar 'Holiday Fun' sessions will be taking place throughout the area, don't miss out!, a free booklet is available from all North Yorkshire Libraries. Last but not least, remember to pick up a

free Prize Draw form at your local library. Answer a few simple questions and you could win tickets to a major North Yorkshire tourist attraction! Local Magic in the Air events

16th August at Richmond Library, 2 - 2.45pm, Arabian Nights with story teller Joan Barr, for children aged 8-12. Admission £1 per child.

Holiday Fun: 7th August at Hawes library 10.30 - 12 noon and 9th August at Richmond library 2.30 - 4pm, for children 5-11. Admission free, advance booking advised.

14th August at Reeth Memorial Hall 10-12 noon, 'drop-in' for children 5-11, no pre-booking necessary.

Do you receive any of these benefits

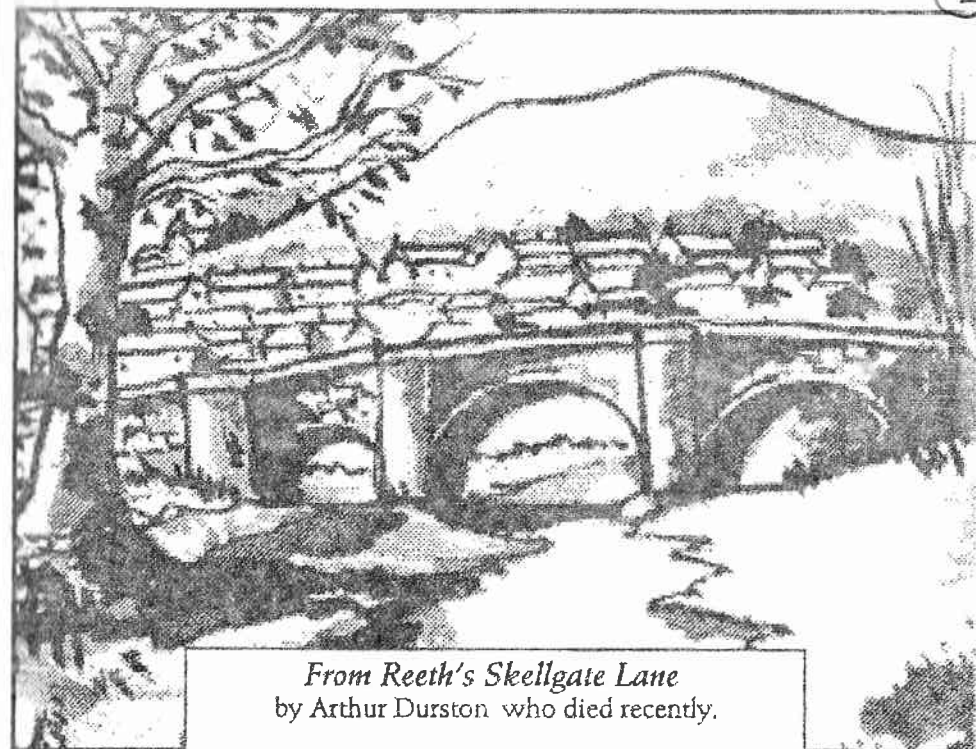
Income Support
Housing Benefit
Family Credit
Disability Working/Living Allowances
Council Tax Benefit
Or are you over 60

Your property can be draught proofed and insulated by a Grant from the Government to cover the full cost.

This work is approved by Local Councils and Major Housing Associations.

Home owners also qualify.

For more information ring:
FREEPHONE 0800 181 667 or by letter
to EAGA FREEPOST, PO BOX 1NG,
Newcastle Upon Tyne, NE99 1NG.



From Reeth's Skellgate Lane
by Arthur Durston who died recently.

*I've lingered long in a tranquil lane
And high above in Calva Plain
The clouds are tinted, reds and greys,
So near to nature in mystic ways.*

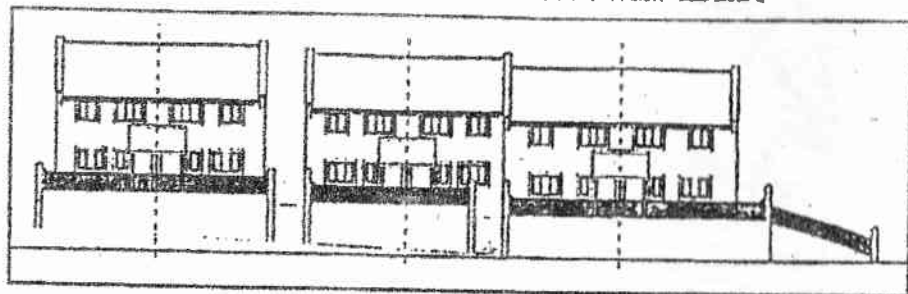
*Grey walls of stone and moss green felt
I've seen the shroud of winter melt
I've heard the thursh's rhapsodic best
As ferns uncurl from icy rest.*

*I've gazed down dale Richmond way
And watched wind combed trees as they sway,
I've seen a myriad of colours on yonder fell
And caught the ring of Grinton bell.*

*A sudden change from pleasant still
From afar Jingle Pot down to Cuckoo Hill
Dark nimbus shadows across Arkle form
A breeze with tears, prelude to storm.*

*Seasons, months, pass quickly crowned
Coloured rainbows arc, I leave the lane,
Around me is a glorious world,
Privileged I, to return again.*

REETH LOW COST HOUSING DEVELOPMENT DUE TO START IN SEPTEMBER



Construction of six new low cost housing units, for rent, in Silver Street Reeth, is due to start in September and is expected to be completed in February of 1996.

Each house will consist of large dining/kitchen, lounge, 2 or 3 bedrooms, bathroom/wc and downstairs wc. Heating will be storage heaters and a Calor Gas fire in the lounge.

Rents will be approximately: 2 bed - £58.00 and 3 bed - £63.00 P.W. Rented property will be allocated on a housing needs basis and applicants must have a local connection with Reeth, i.e. currently reside or work in the area, have close family connections or have lived here within the last few years.

Richmondshire District Council will have the right to nominate applicants from their housing lists and all allocations will be discussed with the Parish Council.

Are you interested in leasing your holiday cottage to a Housing Association?

Home Housing Association (formerly North Housing Association) is one of the largest associations in the country, with 60 years of housing management experience. We are looking at utilising

empty properties to help people needing accommodation.

The advantages to owners are;

- * A guaranteed rental income
- * Council Tax, fuel and water bills paid by the tenant
- * Security for your property
- * Vacant possession at the end of the lease
- * Property returned in reasonable condition
- * Added security of leasing to a major non-profit making organisation.

Anyone requiring further information about the Silver Street development or leasing holiday cottages, should contact:

Carol Ramsay
Housing Officer
Home Housing Association
Brunswick House
1 Deighton Close, Wetherby
West Yorkshire LS22 7GZ
Telephone 01937 588497

Why not advertise your holiday property in the Reeth & District Gazette If not for this season then for the visitor's feature reference or advertise any holiday cottage visitor service you may have to offer.

PARISH COUNCIL

Concern was expressed at the recent Press Reports that Parish Councils may be requested to take over more duties from Richmondshire District Council. Members felt that as Reeth already has responsibility for grass cutting and cleaning the Shelter they already have enough duties. Fortunately the Chairman of RDC, Coun. Nigel Watson was a guest at the meeting and was able to hear the concerns at first hand and advised the meeting that at this time it was only a suggestion.

The Chairman was able to update the members that the Rural Development Commission has agreed to allow the use of their land behind the Industrial Units on Silver Street, as a car park on Friday 25th, Monday 28th August and 1st September. Adequate signing will be the responsibility of the Parish Council, the possibility of a longer term use for the next season looks promising. RDC has agreed to place some recycling bins at the car park subject to the consent of the Rural Development Commission. Litter bins around Reeth are being emptied daily during the season.

A recent meeting at Healaugh, which attracted some 25 residents, has revitalised the improvement project for the Square. This scheme was first put forward in 1983 and hopefully with the possibility of the funding that is currently available a modified scheme of sets or cobbles and paving combined, will at last be given the necessary support to enable it to be achieved. It is accepted that the localised problem of flooding must be resolved first and a problem caused by the Yorkshire Water

Authority be pursued.

VJ Day, the meeting agreed to provide a grant to enable a Children's street party, in front of the Kings Arms on Saturday 19th August, to go ahead. Persons wishing to assist are being urged to contact William McCleary at the Kings Arms.

Yellow Lines County Highways has agreed to review the waiting restrictions around Reeth, members again expressed concern about the problems in Silver Street, particularly in front of the Fire Station and opposite Langhorne Drive.

Reeth Market; members agreed to an additional market on Bank Holiday Monday, 28th August.

For a trial period the Council will sponsor a 'Market Bus' to be operated by Harkers Coaches on the four Fridays in August. Further details will be displayed on local notice boards and in Post Offices in Swaledale.

Mower; the mower has still not been repaired so the Council has had to hire one at considerable expense to cut the Greens of Reeth and Healaugh, which residents acknowledge "have never looked so good". The council is now looking at the options of buying or lease lending a new mower. A particular model has been identified suitable for the terrain and has proved reliable by other councils. Further proposals are being sought for discussion at the next meeting.

Memorial Hall; together with the Memorial Hall Committee the Council are to explore the possibility of grants currently available for a full refurbishment of the Hall.

Signs to the Doctors Surgery; the Council agreed to support and if necessary partially sponsor direction signs from Silver Street and Back Lane. The Clerk was last able to report a satisfactory conclusion to the Trent Motors claim following the coach crash some two years ago.

Following the publication of the Two Dales Appraisal the subject of Rural Transport needs to be examined, particularly with recent alterations to local timetables and possible withdrawal of some services. It was agreed to approach the Royal Mail in Darlington to review the possibility of introducing a Post Bus to both Dales. It was accepted that the support of neighbouring Parish Councils would also need to be sought.

A letter of complaint is being sent to RDC with regard to the poor planning of repairs to the bungalows in Quacker Close, considerable upset is felt by the residents over the arrangements for them while the repairs are being carried out.

Because of the large public attendance at the meeting the Chairman opened the last ten minutes for public discussion, topics litter on the Green, cobbles on High Row and street lighting were raised.

The next meeting is on 28th August, members of the Parish are encouraged to attend.

For the next issue of the Reeth & District Gazette, we would welcome notes from the other Parish Councils; Arkengarthdale, Grinton, Melbecks & Muker. The Gazette is an ideal opportunity to share and cross refer problems and local concerns.

LOCAL NEWS

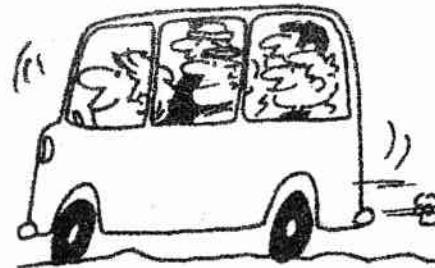
REETH & DISTRICT SPORTS; there will be an open meeting on Monday 7th August at 7.30pm in the Reeth Methodist Chapel Schoolroom. Anyone interested in helping with this annual event are cordially invited to attend. The sports are scheduled for Monday 28th August.

PEACE SERVICE; Reeth & District Royal British Legion will be holding a VJ Day service at St. Andrew's Church Grinton at 2pm on Sunday 20th August. All are very welcome to attend.

VJ DAY STREET PARTY; arrangements are now well in hand for the street party to be held on the Green in front of the Kings Arms on Saturday 19th August. There will also be a Bouncy Castle and some surprise entertainment, children 11 to 2pm (Mr. McCleary would appreciate knowing how many local children to expect), Senior Citizens 2 to 4pm. Contact: William McCleary at the Kings Arms for details.

LOW ROW; the 30th of July was designated National Farming for Children Day, as part of the NFU 'Welcome to the Countryside Campaign'. Hazel Brow Farm held an open day which raised some £138 for the Children's Society. Children were able to help feed livestock, explore the farm buildings, watch clipping and spinning demonstrations and even go on guided riverside and farm walks. Thanks are extended to the many local people who gave freely their time to make this special open day a great success.

REETH MARKET SHOPPING BUS



Reeth Parish Councillors have agreed to sponsor for a trial period during August, a bus to serve Swaledale to enable residents to visit Reeth Friday Market. The bus would leave Muker at approximately 10am and stop in Gunnerside, Low Row and Healaugh. The bus would make the return trip up Swaledale leaving Reeth at 12.30. Arkengarthdale residents may if there is sufficient demand be brought into the scheme, **but please phone to express your interest!** Pick up points, fares and times are open to review, your suggestions are most welcome. If you are interested in using this service for any of the four Fridays please help us by phoning; Malcolm Terry, Harkers Coaches, 884533

TWO DALES APPRAISAL

Have you read the report yet?, it is packed full of relevant information on the Two Dales from your views. Copies have been distributed to all local organisations but additional copies are available from Reeth Post Office, priced 50 pence.

CHILDREN'S PLAYGROUND

Hopefully the next issue, will be able to report on the long awaited grant aid needed.

LEADERS NEEDED!

If you were in the Guides or Scouts you will remember what fun it was. We need someone from the local area to run a Beavers Colony. Beavers is for girls and boys aged 6-8, they learn through group games and activities the basics of scouting. There is a demand in the local community for such a group, but before we can begin we need at least one adult leader (someone over 21) and possibly one or two young adult assistants to the leader. Training, support and guidance will be given, all backed up with comprehensive activity programmes. The children can work toward earning activity badges, the underlying theme and principal of the Beavers is 'Fun & Friendship'

The commitment would be to run the meetings for just one hour per week during term time and occasionally a weekend activity. If we can find a leader then we would launch the Colony in September. For further information call Sheila or Richard Good (your local cub & Scout leaders) on Richmond 884353.



Thinking ahead

Would your child be interested in Beavers?, if so we would like to hear from you.

REETH & DISTRICT GAZETTE

ADVERTISING RATES CHART

This space
£2 per issue

A

This space
£4 per issue

B

This space
£8 per issue

C

Small advertisements under the heading 'MarketPlace'
Maximum 20 words including telephone number
only 50p per issue

This space
£10 per issue

D

ON A ROTA BASIS ONLY

This space
£4 per issue

B

This space
£14 per issue

E

ON A ROTA BASIS ONLY

Ask for the 'Special Feature' advertisement rates!!!
full page, half page or editorial feature.

Your advertisements designed to your specification
phone for details 884513

Welcome to the Reeth & District Gazette

The aim is to publish monthly, by the first weekend of each month, thus meaning the deadline date for each issue will be the last Monday of each month. But any article, item or advert should be submitted as soon as possible. As we are at present a small team, as many advance materials we can receive will help considerably with the page planning of the Gazette. If you are interested in writing then please make yourself known to me, we need articles and sub editors.

The Gazette will be free of charge and available from local shops, hostelrys and the Post Office. It MUST become self supporting either through sponsorship and/or advertising.

We hope that you will find it informative, interesting and fun! it all depends on what YOU contribute.

A small team is beginning to build to help publish each issue, we can adapt and develop as we go along, but the most important aspect is that it should be for and written by the residents of Reeth and District, young and old alike.

We would like to take this opportunity to thank everyone who has helped produce the FIRST ISSUE, particularly the Rev. Eleanor Reddington, family! and Reeth Methodist Circuit for printing and collating it, Sylvia Durston and Mathew Frankland.

Chapel and Church notices can also be given. The Gazette can convey Praise.

Notices in shop windows are not always seen, the Gazette is the ideal place to advertise or give notice of an event you are holding. Reports from the Schools, the Young Farmer, The Bands, The Dales Ladies (Yes we did see the D&S!!), Your Club or organisation, if you know of an outside event taking place in the district let us know, Neighbourhood Watch, Local Crime Update, Housing matters, Canvass local issues... lets hear your views and ideas.

Other subjects to prompt your thoughts: Cartoons Quizzes Recipes Poems Letters Articles of local historic interest Quoits Darts Dominoes Football Cricket.....

Thank you, *Peter Brant*

The success of the Gazette is up to you!

Sponsored by Reeth Parish Council

Can you remember what life was like in Reeth in the 1930's?

A mature student is conducting a social history study, so if you have a tale or two to tell please contact Brian Smith on the Secondhand book stall on Reeth Market each Friday or telephone 01748 811706

REETH SHOW 30th August

Schedules are now available from
Barclays Bank
Bottom Shop
Post Office
or the Secretary 01748 88247

REETH BAKERY

Traditional family bakers using many local recipes
Also available: local cheeses, milk & free-range eggs
Open every day during the summer 9-5 Telephone 01748 884500

GRINTON FLOWER FESTIVAL



A weekend of colourful splendour and superb music enabled the Weekend of Celebration to celebrate the completion of the recent major restoration work at St Andrew's Church Grinton pass in a memorable style. Many local people and organisations worked hard to lavishly decorate the Church with an array of beautiful flowers, to enable visitors and residents alike appreciate why the Church is called the 'Cathedral of the Dales'. Highlights over the weekend were the excellent concert given by the Yorkshire Evening Post Band and the Celebration Service with the address given by the Bishop of Knarsborough.

The following groups exhibited flower arrangements

Swaledale Gardening Club,
The Craftspeople of Swaledale,
St. Mary's Church Muker, The Reeth &
District branch of the Royal British
Legion, Dr. Bond's Surgery, The White
House, Reeth Brownies, Reeth
Playschool, The Bridge Hotel Grinton,
The Bridge Club, Reeth Bakery,
Marrick Priory, Reeth Ramblers,
Swaledale Fell Rescue, WEA Swaledale
branch, The Thursday Club, St.
Andrew's Bellringers, Holy Trinity
Church Melbecks, Reeth YFC,
Reeth Show Committee,

The Burgoyne Hotel, Reeth Athletics
Association, Reeth Amblers, Susan
Midwood and Barbara Lindars, and the
Parish Choir. Thanks are also extended
to the Reeth Congregational Church,
Reeth Methodist Chapel, the Kings
Arms Hotel, Roots & Shoots, The
Richmond Flower Club, Newtons,
Braithwaites, Cartmans, Marjorie &
Nirman Davidson, the Bottom Shop
Reeth and all who gave their musical
talents during the Festival.

Cub Scout & Scout News

Cub Scouts

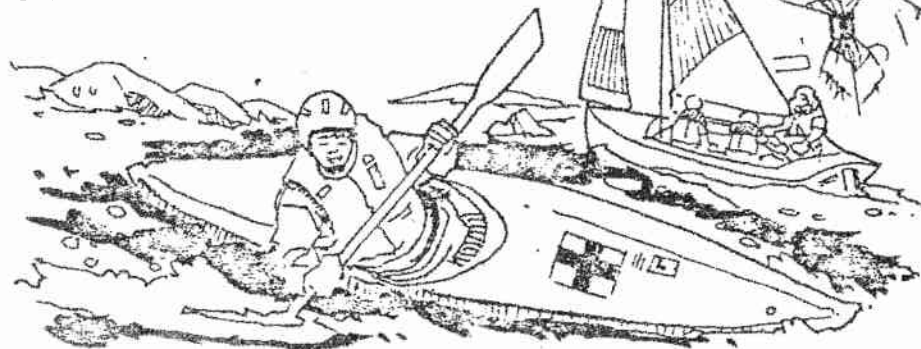
(for girls & boys aged 8-10 1/2)

The Cub pack meets during term time at Reeth School on Mondays 6-7.30pm. This year the Cubs have been camping, swimming, to a Cub Activity day at York, walking, tracking, fire lighting and cooking and lots more. We have room for more Cubs, so why not come along to Reeth School at 6 on Monday 11th September, and find out what its all about, or ring Sheila Good on 884353.

Scouts

(for young people aged 10 1/2 to 15)

There is a saying small is beautiful however the current numbers in the Scout Troop of just four boys is a little too small and can restrict the things we can do, we MUST build on these limited numbers. The Scout Troop meets during term time at Reeth School on Mondays 7.30-9pm. The Scouts have been to Wet & Wild, skiing, canoeing, camping, orienteering, gliding at Sutton Bank, cycling and much more. Why not pop into Reeth School at 7.30 on Monday 11th September, and find out what its all about, or ring Richard Good on 884353.



DIARY DATES

August

- 4 Special Market bus
- 7 Illustrated talk at Fremington School room 8pm, Lost and Secret Places of the North East, by Mark Whyman
- 8 Arkengarthdale Jubilee club day trip to Whitby, phone there may be still some places 884510
- 9 2pm, Pantry Shelf, home baking bring and buy, Reeth Methodist Church
- 11 Special Market bus
- 13 Guided walk, On the Edge, meet at Maske Bridge 2pm, lead by Paul Denning
- 14 Magic in the air, Holiday Fun for 5-11 year olds at Reeth Memorial Hall
Illustrated talk at Fremington School room 8pm, Leadmining in Swaledale & Arkengarthdale, Laurence Barker
- 16 Guided walk, Old Gang Mills & Mines, meet at Surrender Bridge at 2pm, lead by Laurence Barker
2pm, Pantry Shelf, home baking bring and buy, Reeth Methodist Church
- 18 Special Market bus
- 19 VJ Day street party on the Green in front of the Kings Arms Reeth, 11-2pm children. 2-4pm for Senior Citizens, see page 6 for details
- 20 VJ Day Service 2pm St. Andrew's Church Grinton
- 21 Illustrated talk at Fremington School room 8pm, The Landscape of the Dales- a geologists View, David McMahon
- 23 10am, Reeth Manse Open Day
- 25 Special Market bus

28 10am, Coffee morning at Muker Methodist Church

Special Extra Reeth Market

10-30am Car boot sale in Langthwaite, in aid of Church & Chapel repair funds

3pm Afternoon teas at Arkengarthdale school

Reeth Children's sports

7pm Reeth Parish Council meeting

7pm Sankey Evening, Gunnerside Chapel with the Muker Silver Band

Illustrated talk at Fremington School room 8pm, From Tan Hill to Ravenseat,

Major FTC Williams

Reeth Post Office open all day as normal

30 Guided walk, From Tan Hill to Ravenseat, meet at 11am at Tan Hill Inn, lead by Major FTC Williams

September

1 National Children's Homes coffee morning 10am at Reeth Methodists

3 Chapel
Guided walk, Leadmining in Sleigill, meet at the Red Lion in Langthwaite at 2pm, lead by Roger

4 Pettican
Illustrated talk at Fremington School room 8pm, Unusual Yorkshire, Norman Davidson

Make sure that your event is listed in the next issue, drop in the details to the Post Office

Voluntary Car Scheme

Over the last couple of years, Help the Aged and the Yorkshire Rural Community Council have sponsored a project looking at the needs of people, particularly older members of the community in Swaledale and Arkengarthdale. David Harvey, the project leader, has become a familiar visitor and worker in the area. As a result of research he has done, Luncheon Clubs have been set up in Arkengarthdale and Muker.

Many people are aware that transport is a problem in this area, so David has been looking at voluntary transport schemes in other communities, to see whether anything similar could be set up here.

A scheme that is being looked at would involve people who need transport phoning a particular number (giving as much notice as possible) and from a list a driver would be found to take them to their destination. A small charge would be levied for the trip, the rate per mile could possibly decrease for longer journeys. The non profit making charge would, depending on the circumstances, cover or go toward the cost of petrol used by the vehicle.

Before such a scheme can be advertised fully, David would like to draw up a list of volunteer drivers. The more volunteers there are, the more people there will be to share the driving. Some people make regular journeys to a particular place, or know they are going to Northallerton, for instance, on a particular day, and if they are willing to give someone else a lift this will be a great help.

If you would like to volunteer as a driver, or would like to know more about the scheme, then contact David Harvey on Richmond 822943, or call the Rev. Eleanor Reddington on 884336.

YOUR LETTERS

Sir, First of all may I, on behalf of the Swaledale Christian Council congratulate you on the launch of the Reeth & District Gazette. May I also wish you every success in this venture. I would like also to sincerely thank everyone who helped with the recent Two Dales Appraisal - the standing committee, the Parish Councils, and all who helped financially, but in particular, I would like to thank everyone who took the time to read the questionnaire and return it. Without them the exercise would have been pointless. Their response was marvellous and shows that local people really care about the Two Dales. My sincere hope is that the points brought up in the Appraisal Document will enable a more informed discussion to take place whenever, or wherever the needs and feelings of local residents are discussed.

George Lundberg - Chairman of the Swaledale Christian Council.

VJ Day; Just a small note to say thanks for all the support and offers of help which are coming in.

William McCleary - Kings Arms

Ed. see local news for details of this event.



WHAT A CARRY ON!

The old song by Bernard Cribbins about moving a piano had nothing on getting a cow back on it's feet. The cow belonging to Dennis, Hazel & Dorothy Harker of Booze, had calved earlier in the morning. It then fell down a very steep slope, not quite getting stuck up a tree but in a difficult enough situation to require the Reeth Fire Service to come out and Richmond's and Northallerton's. For over six hours they struggled before successfully completing the rescue.

The Fire Service have also been out on what fortunately turned out to be false alarms, early morning mist being mistaken for moors fires, mystifying?

More serious was the recent fire on Sleightholme Moor, considerable, and in the opinion of Ramsey Hutchinson, permanent damage was caused by the fire, which took three days to finally extinguish. The fire is thought to have been caused by the irresponsible throwing away of a cigarette end.

MARKET PLACE

Free to a good home-one as new ironing board tel: 884528

Girls pink & white bicycle 5-9 yrs. 18" wheels, VGC, £30. Childs tricycle suitable for child aged 2-4 yrs. NOT PLASTIC, adjustable seat, VGC, £10, tel: 884263

Jacob Fleeces & Skin Rugs tel: 884572

Logs & Free Range Eggs tel: 884380

Auto washing machine-Phillips Elite 90, regularly serviced, in daily use, £48 ONO tel: 884881

Commodore 64 computer with disc & tape drive, one joy stick plus 80 games £60. Super Nintendo 2 joy pads & 5 games £90, tel: 886297

New seasons Pure local Yorkshire Honey now available from George Birks The Rigg Arkengarthdale tel: 884272

Use this column to advertise things you want to sell or buy or have a service to offer or require, it cost only 50p per issue!

THE BURGOYNE HOTEL

On The Green Reeth
Richmond North Yorkshire
DL11 6SN
Telephone & Fax
01748 884292

J.E.HIRD

MOBILE BUTCHER

Prime quality fresh & cooked meat
groceries. Weekly local visits
& Reeth Friday Market

STEPHEN STUBBS

ELECTRICAL CONTRACTOR

Storage heating New & Rewiring Showers
Security lights Fire alarms Etc... **FREE ESTIMATES**

Scar Barn Arkengarthdale Tel. & Fax 01748 884686

THE BOTTOM SHOP of REETH

Jan & Roy welcome you to their General Store & News Agency open seven days a week

GROCERIES LOCAL PRODUCE FROZEN FOODS ICE CREAM

HOME COOKED HAM CARDS & Much Much More....

Jan & Roy Bickerstaff, Oakworth House, Reeth, Swaledale DL11 6TW (01748 884552)

**POST
OFFICE**

Did you know that
you can now get your
Foreign Currency & Travel
Insurance from us?

REETH POST OFFICE

Greetings Cards

Books Stationery

shop now open weekends

☎ 884201 for details

NORMAN F. BROWN

Chartered Surveyors Auctioneers Valuers Estate Agents

We have a wide range of properties for sale in Swaledale and the
surrounding areas. Specialist Letting Department.
RICS Homebuyers Surveys, Valuations for all purposes,
Agents for The Northern Rock Building Society.

Offices

14 Queens Road, Richmond, N. Yorks. DL10 4AG 01748 822473

6 Bridge Street Bedale, N. Yorks. DL8 2AD 01677 42282

25 Market Place, Leyburn, N. Yorks. DL8 5AS 01969 622194

D. ALLINSON

ELECTRICAL CONTRACTOR

All types of electrical work undertaken
domestic & commercial, **NICEIC** approved
Willow Cottage, Reeth ☎ 01748 8844343

**B E N C H M A R K**

Leaflets Brochures Fliers & Posters
Letterheads & Visiting Cards
Advertisements Menus Labels Logos...

Designed to your specifications

Telephone & Fax 01748 884513

Richard G. Birks

**CLOCK
WORKS**

Clocks Repaired, Cleaned
Serviced & Restored
For prompt attention call

Ian Whitworth

☎ 01748 884203

SECONDHAND BOOKS

Bought & Sold at the
BOOKSTALL

Friday Market Reeth

or Telephone Tony Pelton
01748 818703

Paperbacks, Hardbacks, Maps,
Music, Older Magazines
Anything Printed!
Bought & Sold

The Copper Kettle

Licensed Restaurant

Tearoom

Reeth

☎ 01748 884748

Arkengarthdale**RED LION INN**

Free House • Real Ales

Bar Meals available at lunchtimes
all year round

☎ 01748 884218

**REETH & DISTRICT
GAZETTE**

Issue N°2

September 1995

CONGRATULATIONS**REETH**

Congratulations you all, Reeth is the
best, and that's official!! We've won
the **Best kept Village** competition
organised by Richmond District
Council. Judging was in July when the
Green was looking its best for many
years and many local residents and
businesses made a superb effort with
an excellent display of flowers in
gardens, window boxes, hanging
baskets etc. Some even tidied up
paths, steps and weeded around
cobblestones. We won because of a great
team effort by you all, well done and
thanks to those of you who regularly
walk around and pick up litter.

Reeth will be presented with a tree
later in the year. Regretfully the
Council are no longer providing a seat
or plaque due to financial restrictions.

Reeth was 1st in its category of village
populations between 400 & 1,000, 2nd
was Gilling West with Melsonby 3rd.

Don't let Reeths win overshadow the
success of other local villages, in fact it
was a virtual clean sweep for
Swaledale. In the under 200
population category; 1st **Gunnerside**,
2nd **Fremington** and 3rd **Grinton**.
There is tremendous pride in keeping
our villages tidy in Yorkshires loveliest
Dale.

Reeth Parish Council will not rest on
its laurels and is keen to maintain the
standard the village now enjoys.

BULBS

The Parish Council is keen to
encourage groups, particularly local
youth groups to embark on a
campaign to replant bulbs around the
area, particularly on the High & Low
Greens Reeth. The expertise of the
local gardening club is to be sought
and any ideas or suggestions can be
left at the Post Office.

QUIZ

A	U	R
M	G	I
S	N	E

See if you can make 90 words of
four letters or more using each letter
only once. The letters also make a
nine letter word, what is it? Small
prize for the first complete correct
entry drawn. Drop in your entries to
the Post Office by 21st September.

August's competition was won by
Susan Allison of Cogden Hall,
Grinton, who received a small prize
sponsored by Reeth Post Office.

CHRISTIAN AID

The Christian Aid stall at Reeth Show
realised £128.61p