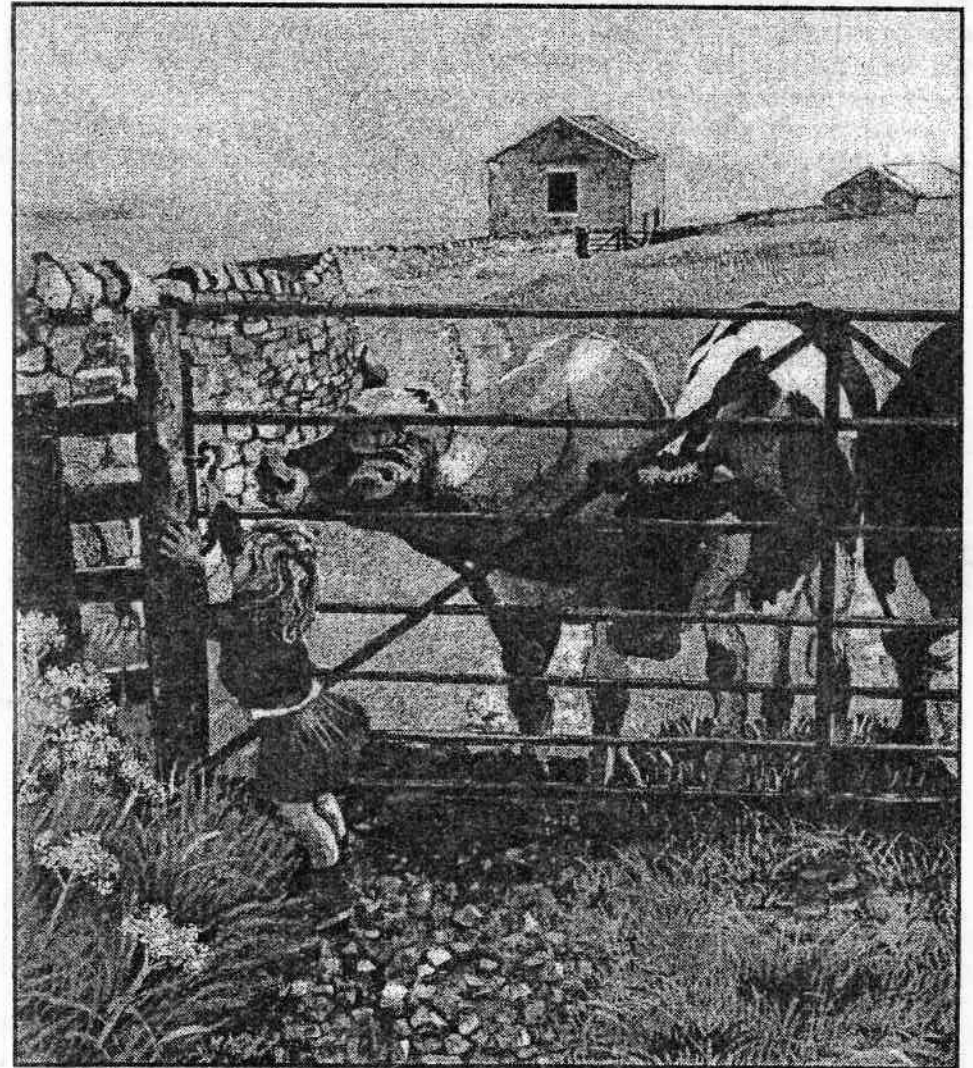


REETH & DISTRICT GAZETTE

Issue N°13

AUGUST 1996

Published 1st August 1996



Local News - Diary Dates - Walking with the Major
"The Magnificent Seven" - Parish Council Report - Book Reviews
Reeth Home Guard - "Forget" - Dalesbus and much more!

LOCAL NEWS

REETH SCHOOL

The children of Reeth School recently presented their end of year concert to the Trustees, parents and friends of the school. The school's musical ensemble played 'Blues' and the younger children sang a selection of songs from "Little Moose."

The older children then performed the musical play 'The Secret Paradise Island' - a rumbustious tale involving bloodthirsty pirates, betrayed servants, unhappy monarchs, plotting barons, contented South Sea islanders and the search for happiness. The audience appreciated the lively, humorous production and were delighted to be allowed to share the secret of happiness with the children.

Mrs Elizabeth Rowntree, secretary of the Trustees, presented book tokens to Sophie Bulman, Ben Malton, Ian Pybus, James Rutter, Adam Lovatt, Katy Sunter and Lesley Ann Hutchinson. The Sinclair Essay Prize was won by Katy Sunter and Lesley Ann Hutchinson and their certificates were presented by Mrs Alice Atkinson.

The Headteacher, Mrs Rosalind Earl, presented Junior Essay Prizes to Melissa Guy and Stephanie Matthews. Finally the children and their guests enjoyed a delicious tea prepared by the catering staff.

NEW SEAT OUTSIDE THE DOCTOR'S SURGERY

This sturdy seat has been purchased with donations given by family and friends in Memory of Les Williamson who died in Reeth in May.

His first visit to Swaledale was with the 8th Darlington (Cockerton) Scouts in 1917 when they pulled a trek cart with all their belongings from Darlington to Robin Gate near Whita Bridge where they camped for a week by the River Swale.

This was the beginning of a lifetime love of the Dales and an enthusiasm to explore the area, on foot, in all weathers.

THE CB HOTEL

After extensive refurbishment and landscaping works, the CB Hotel, Arkengarthdale will be opening for the August Bank Holiday weekend, Blenkirons willing!

Charles and Stacy Cody look to re-establish the CB as a warm and friendly place to meet, eat and drink. The emphasis will be on serving fresh local foods traditionally prepared and cooked on the premises along with local beers, wines and spirits. In addition, we will be opening with five double en suite bedrooms and one single with a further five double en suite rooms opening next Spring.

We look forward to welcoming you all.

Stef's



Reeth Dales Centre, Silver Street, Reeth

Choose from our large & exciting
range of Animal Figures & Wall Plaques
Ideal gifts for animal & countryside lovers

All designed & made in Swaledale

Free entry to see our expert team at work

Open Monday - Friday 9.15 - 4pm

☎ 01748 884498

Private buyer seeks cottage
in Reeth or close surrounding
area please telephone

01482 659430

REETH SHOW

WEDNESDAY 28th AUGUST

Gates open 10am to the public

Admission £2 Children 50p

ATTRACTIONS

Mid Wales Axe Racing Team

Dry Stone Walling Demonstration Open Fell Race

Reeth Brass Band Sheepdog Trial Trade Stands

Local Tug-of-War Show Night Dance

Secretary

Mrs B Harker Stubbins Farm Harkerside

Grinton Richmond Tel: 01748 884247

Entries close on Monday 12th August

SHOW NIGHT DANCE

Admission £3 at the door

THE MARQUEES on Show Night

FROM 9pm to 1am

DANCING TO

THE SILVERSHADE DICO

Light Refreshments will be available

MUSIC SUCCESSES

In the Saltburn Music Festival in July, the Gallows Top Quartet (Emma, Rebecca and Victoria Lundberg and Ben Knowles) gained First Place in the Brass Ensemble Class - 16 years and under. The Gallows Top Trio (Emma, Rebecca and Victoria Lundberg) gained First Place in the Brass and Woodwind Ensemble Class - 16 years and under. In the Open Brass Class Emma Lundberg gained First Place, and in the Under 16's Brass Solo, Rebecca Lundberg gained First Place, Emma Lundberg Second Place, and Victoria Lundberg and Ben Knowles gained a Certificate of Merit.

In the recent Associated Board of the Royal Schools of Music Practical Examinations which were held in the Richmond Centre in July, Victoria Lundberg, aged 12, passed in Grade 6 Saxophone and Grade 8 Tenor Horn; Rebecca Lundberg, aged 14, and Sarah Wilkinson, aged 13, passed in Grade 5 Flute. Rebecca and Sarah are pupils of "Libby" Gillon.

Also Caroline Allison, aged 10, passed her Grade 2 exam in Tenor Horn. All the young people play for Reeth Brass Band.

REETH BRASS BAND

Reeth Brass Band, looking exceedingly smart in their new uniforms have given two excellent concerts recently. The first in Grinton Church to celebrate the recent release of their fast selling cassette "Reeth Green" and the second in aid of the Memorial Refurbishment Appeal. At both concerts the Band performed a varied and lively programme ranging from popular theme music, to marches, classical, Lloyd Webber and hymns. Their concerts were excellent.

The Band is next performing locally at the Songs of Praise Evening in the Methodist Church on August 2nd, Reeth Sports on

August 26th and at Reeth Show on August 28th.

The retiring collection for the Memorial Hall raised £115.20 for the Refurbishment Appeal.

The cassette "Reeth Green" has shot to the top of the Dales Hit Parade and is a must for any lover of quality Brass Band Music. Priced £5 it is available from most local shops, but be quick it is selling fast!

DORANT LTD CAR AGENTS

For your NEW or USED

BMW Fiat Land Rover Honda
Mitsubishi Range Rover Volvo
Mazda Rover Toyota Vauxhall

Cars Purchased - All facilities

John Collins East Hope Scargill

☎01833 621305 Mobile 0860 787541

9am - 7.30pm

REETH BAKERY

Traditional Family Bakers
using many local recipes

Bread, pies savoury and fruit
cakes & biscuits.....

all baked on the premises

Also available: local cheeses,
milk & free-range eggs

Enquiries 01748 884735



Domestic & Commercial
Decorators

For a complete decorating service
Contact Steve Holmes
01748 823183

RESCUE



Recently members so the Swaledale Fell Rescue were called out to rescue a cow which had fallen down a waterfall near Keld. Considering the terrain, communication problems, the water and the need to milk the cow before rescue could commence it was certainly a rescue which would task the skills of our "nothing is impossible" team. It is pleasing to record that eventually all went well and the cow was safely rescued, if not indignant about all the activity in her new milking parlour!

Tony Sunter
Dry Stone Walling

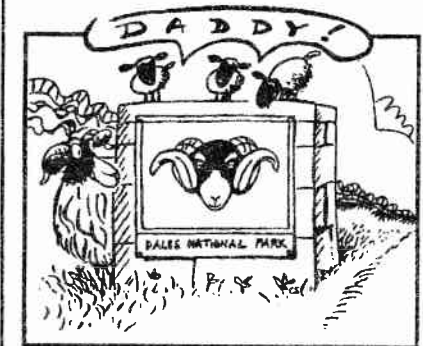
Telephone 01748 884624
after 6pm

REETH NATIONAL PARK CENTRE

As we go to Press the opening of this Centre is still delayed due to circumstances beyond the control of the National Park. The necessary construction work is still to be completed and that is the remit of the County Council. The Centre will open as soon as possible this month.

The pupils at Reeth School, as part of a Rural Arts project have completed a beautiful embroidery which will have pride of place in the new Centre.

NATIONAL PARK



National Park officials are having to concede defeat on their ruling on second homes within the Dales.

The clause in the local plan - "All new homes built in the national park should be the principle residence of the occupier" - has to be dropped at the request of the Environment Secretary.

Only time will reveal the outcome of this latest ruling in the very contentious issue of housing within the Dales. The National Park are committed to conserve housing within the Dales for local use and their policy was introduced in an attempt to reduce the number of homes becoming second homes.

SHOOTING SEASON?

As we go to press local contractors are busy building shooting butts in preparation for the forthcoming season. Landowners are also preparing, not just for the shooting parties, but also for annual onslaught of the protesters who do not understand the need for this activity which is not only essential to the economy of the area but also the ecology of area.



*Why thay call it
Famous Grouse*

However we understand that this year's breeding has been particularly successful for two giant "grouse" are loose in the area. After mention of "Eerie sounds in the Dale" last month we are aware that those sounds continue, especially around the dawn chorus. The culprits have also escaped and to date evaded recapture. We trust this fine feathered species will receive sympathetic support in the quest to find a mate (see "lonely hearts" in our Market Place column.) Provided they rest in the recently declared SSI area they will have the full protection of English Nature. Even the renowned local ornithologist Prof. S Crowe was jubilant at a recent sighting for he thought that the mysterious egg recently displayed in a well known local shop had hatched the only living sample of his infamous Swaledale Leadminer Bird. (Perhaps that is why he has postponed the

publication of details of his latest invention - some form of Bird scarer we understand.) Much debate and speculation is abound in the Upper Dale but we have inside information and can reveal that these sounds and giant "grouse" are nothing but two lonely Peacocks searching for

TRANQUILITY?

"Residents and visitors alike enjoy the peace and tranquility of the Dales

Recent weekends that peace has been shattered because of noisy Discos and rowdy youths outside. Much, aggravating minor damage was caused with public toilets a target. What about the day visitors who need to use them?

Motor cycle trials on the Fells are nup problems but they do cause upset when they use the host village to rev up and show off their skills.

Get away from it all and come to the Dales - it gets more like suburbia.

Nobody objects to reasonable people enjoying themselves and there is a need to support the local economy and raise monies for local causes but surely the Dales are a more responsible place? Or do such events provide the suitable blanket for a few local idiots to ruin events and opportunities for everyone?



JAMES PEACOCK
FOR YOUR COAL &
SMOKELESS FUELS

Approved coal & Fuel merchants
Speedy & reliable deliveries of
solid fuels & oils throughout the
Swale & Arkengarthdale area
Telephone 01969 650465

NATIONAL PARK GRANTS

The National Park operate a number of Grant-aid Schemes for the benefit of the Dales, briefly they are:

Trees and Woodland - for the creation of native woodland and maintenance of existing tree schemes - contact the Grassington Office

Farm Conservation Scheme - five year whole farm agreements - contact the Grassington Office

Building Conservation Grants - includes Partnership Schemes, the Barns and Walls Conservation Scheme, the Historic Building Grant Scheme and some discretionary grants - contact the Bainbridge Office.

Archaeological Grants - contact the Bainbridge Office

Community Initiatives Scheme - provides grant assistance for the conservation or enhancement of community buildings or land. It also covers the provision of additional or improved community facilities.- contact the Bainbridge Office.

Grassington Office, Tel: 01756 752748
Bainbridge Office, Tel: 01969 650456



Tan Hill Inn
Keld • nr Richmond • North Yorkshire
Britains Highest Inn 1732 ft ASL
Reeth 11 miles • Langthwaite 8 miles
Open all day • B&B on suite
Licensed to get married on the premises
Food lunchtimes & evenings
Theakstons & Various guest ales
Alec & Margaret Baines 01833 628246

LOCAL RADIO STATION

The Radio Authority has decided to award the licence for the proposed local commercial Radio Station for the Dales to Yorkshire Dales Radio Ltd (YDR.)

Richmondshire District Council, Reeth and Muker Parish Councils and this Gazette had supported one of the other two applicants "Sounds of the Dales," as the applicant with the best proposals for this area. Like the other applicants from the "Dalesman" Magazine they had taken the time to come to this area, hold a public meeting and detail their proposals.

Ironically YDR did not find it necessary to canvas in this area and to date we have not had an contact from them as to their proposals. From the information on hand to date, this area will get a very limited service from them. Hopefully in due course we will be able to feature their proposals as we understand they hope to be transmitting by the end of the year.

There is an old saying, "You can't miss what you never had.....!"

ONLY POTHOLES

Pete "Pothole" Roe of the Punch Bowl fame has disappeared on a potholing expedition to Africa (apologies for our geography!) to explore some lava tubes (fancy title for holes int' ground) on the Cape Verdi Islands. Rumour has it that that he "disappeared" before the article in the "Northern Echo" to avoid the autograph seekers. With a certain Beer Festival due to be opened for the August Bank Holiday weekend we are advised that he will be forsaking pot holes for a watering hole!

The Copper Kettle
Licensed Restuarant
Tearoom
Reeth
☎01748 884748

FORMER ARCHDEACON'S DAUGHTER WEDS

St Andrew's Church, Grinton was the setting for a colourful international wedding on Saturday 13th July when Mr Tonny Paul Rinde of Feios on the Sognefjord, Norway married Miss Felicity Katharine Burbridge, fourth daughter of a former Archdeacon of Richmond (1976-83) and Mrs Burbridge of Fremington. The occasion was made more colourful by the presence of a number of the bridegroom's friends and relations wearing Norwegian national dress.

The ceremony was conducted by the Very Reverend Paul Burbridge, who until last year was Dean of Norwich. The couple made their promises both in English and Norwegian, and the lesson was read in those languages by the bridegroom's father and bride's mother.

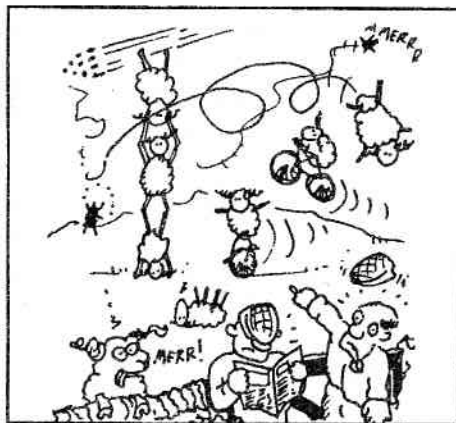
Felicity was attended by Katie Bycroft, a former school friend who was also a contemporary at Cambridge University, together with her nephew as page and three of her nieces as bridesmaids. Cello music was provided by her eldest sister, Rachel Howgogo, a professional performer. The organ was played by Geoffrey Coffin, a former Assistant Organist of York Minster. The reception took place at the Kearton Guest House, Thwaite and was followed by a Norwegian-style party in Fremington Sunday School in the evening.

Following their honeymoon in Turkey, Tonny and Felicity will live at Feios on the south side of the Sognefjord, where Tonny works for a computer firm and Felicity is a state-qualified Anglo-Norwegian translator.

FARMING

Thankfully the weather held for the ESA dates for haymaking and so some quality hay has been reaped. The media and the government are scaremongering with sheep

prices now after the Beef fiasco. Modesty once again prevails amongst local farmers who again achieved very high standards at the Great Yorkshire Show. Standards should once again be high at both Reeth and Muker Shows. "There's nowt wrong with our beef or sheep!"



"Sez' ere' that BSE can be
transferred ta sheep!"

GRAND CAR BOOT SALE

In aid of the

Church's of Arkengarthdale
Lanthwaite Arkengarthdale
Monday 26th August
**open to the public
from 10am**

Afternoon Teas

in aid of St. Mary's Church
Arkengarthdale

Arkengarthdale School
from 3pm
everybody welcome

Enquiries to
Richard Good 01748 884353
Richard Birks 01748 884513

REETH TWO DAY MOTOR CYCLE TRIAL

Once again the prestigious Richmond Motor Club selected Reeth as the centre for their Two Day Trial. Starting at Grinton on Saturday July 20th at 1pm over 100 competitors, from as far away as Woking, Swindon, Mansfield, Cumberland, Northumberland and West Yorkshire covered a moorland course including Cogden Moor, Harkerside Moor, Crackpot Gill and Fremington Edge,

On the Sunday, starting at 10am, the course took them across to Wensleydale to Bolton Gill, Woodhall, Newbiggin, back across to Summerlodge, Birks End, Low House and finally Harkerside to finish at Grinton. Some of the exhausted riders were still trickling through at nearly 6pm but all were unanimous in their praise of the organisation, the superb course and friendly spirit everywhere.

Nerve centre for the running of the Trial was West House, Farm, Healaugh, home of farmer Richard Sunter and his wife Angela and family. Angela is Secretary and Richard (a star works rider of not so long ago) spent a lot of time selecting sections, marking out the course and organising the observers. He was ably assisted by his two sons John and Mark (two talented riders themselves) who also spent Saturday and Sunday as observers because they were too young to ride.

After two tense hard days winner and runner up places went to the two very experienced local riders who dominated the famous Scott Trial for nearly a decade, Philip Alderson ran out winner from Gerald Richardson by a small margin with Paul Bennet third.

October 19 Scott Trial

HOLIDAY HOMES

The proposed decision to restrict advertising in the 1997 Official Holiday Guide to "inspected only" premises has been deferred.

The controversial decision was due to a condition of the European funding for the Guide which is part of an initiative to boost tourism in the Dales. It now means that normal criteria can apply. The 1997 Guide will feature the whole of the Yorkshire Dales and will be a combined project of Richmondshire District Council, the Yorkshire Dales National Park, Craven District Council and South Lakeland District Council.

However holiday home owners are advised to update their furniture to comply with new regulations outlawing flammable covers and toxic foams which come into force at the end of this year.

Further details are available from the Richmondshire District Council Tourism Unit: Telephone 850222

The Ghyll

Bed & Breakfast

Arkle Town Arkengarthdale

Set in wonderful countryside,
with spectacular views of Arkengarthdale

All bedrooms en-suite with colour TV.

For details contact Mrs. Sheila Good
on 01748 884353 or Fax 01748 884015

LAIMAN STONES

LIME & DRYSTONE WALLING
BARN & HOUSE RESTORATION

Park Head Farm Arkengarthdale
Richmond DL11 6RR
Telephone 01748 884730

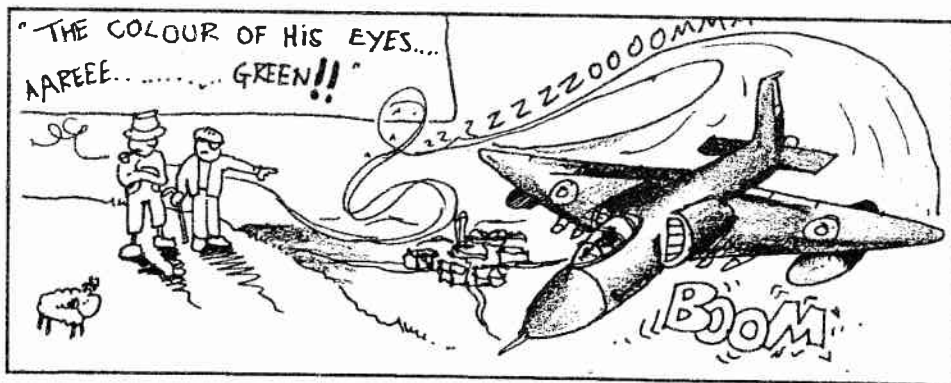
MUKER SHOW

September 4th sees the 97th Muker Show take place. In addition to the usual events and attractions we are to host a heat of the British Open Fell Race Championship which should guarantee an exceptional set of fell runners at Muker. The popular invitation Sheep Dog Trials will also take place.

Three new cups have been donated to add to the thirty already awarded. A cup for the best individual winner in the children's fancy-dress - open to all (given by Ernest and Doreen Whitehead); a memorial cup given by the late George Kilburn's family to a sheep class; and a cup for children's handwriting given by Mary Thomas. The speaker at the Show Lunch will be Dr. J M Hamer of Hawes.

Muker Band march from the Farmers Arms with all officials, judges and stewards at 10am to officially open the Show - they entertain all day and lead the community singing outside the Farmers Arms to end the Show. Many people enjoy this traditional event - we even have official National Park hymn sheets!

All that we need is a fine day - see you there
Margaret Rutter
Secretary, Muker Show



GUNNERSIDE WOMEN'S INSTITUTE

Gunnernside Womens Institute celebrate their 50th Anniversary this year.

As a start to the special year a special party was held in June when many ex members from far and wide were invited. Six local Institutes which are closely linked with Gunnernside sent representatives and Rose Heaton and executive members from Catterick was a special guest.

On show were displays of many crafts made by members and some beautiful flower arrangements,

We were very proud to have Mrs Hannah Milner cut the birthday cake - she is the last surviving member from the very first meeting in 1946 and remains a very active member and took part in the entertainment on our party night.

A good supper was enjoyed and when all the guests had gone there was lots of food left over - a visiting troupe of Morris Dancers came in and helped to "eat up."

FOR LET

Two one bedroom flats above the new National Park Centre in Reeth to let, contact Carol Ramsay on 01937 588497 for details

REETH MEMORIAL HALL

It is pleasing to record that most of the grant aid for the current refurbishment project - from the National Park, the Rural Development Commission, Euro 5b, Richmondshire District Council, and Reeth Parish Council - has now been approved. What is now required is for local fund raising to achieve its target - there is still some £8000 to go! However as the project is being "phased" works to renew the supper room roof and refit the kitchen will take place during the current school holidays thus minimising disruption to Hall users, especially the Playgroup.

The recent concert by Reeth Brass Band - they were really on top form, excellent - realised £115.20p from the retiring collection.

Any donations for the current Refurbishment Appeal should be taken/sent to Barclays Bank, Reeth

The next Hall Management Meeting is at 7.30pm on Thursday 5th September and this will again be an open meeting to coordinate fund-raising and to examine and discuss the progress of the project. It is your hall please support it. Will Hall users and affiliated groups please note this date and ensure representation at the Meeting.

REETH PLAYGROUP

At the recent AGM the following officers were appointed: Chairperson: Joanne Simpson, Treasurer: Karen Atkinson and Secretary: Eileen Lewis. The Playgroup meets in the Memorial Hall on Monday and Thursday mornings during school-term time. For further information on the Playgroup contact either Joanne Simpson Tel: 884483 or Eileen Lewis Tel: 884338

AT HOME

Mrs Doreen Whitehead of Swaledale Fundraisers raised £1,575 with her "At Home" tea, despite the bad weather which meant at last minute change to Keld Village Hall.

Mr William Hague MP attended the event and Hawes Auction Mart sponsored the raffle tickets. The first prize of a painting, donated by well-known artist Grace Gilpin, was won by Mrs Mary Calvert of Gayle. Proceeds were for the Nimbus Bed Appeal which now stands at £2075 - the target being £3000. "Nimbus" beds are designed to give long-term bedridden people relief and help prevent bed pressure sores.

DEREK JOHNSON
Your Local Handyman
Hill Side Arkengarthdale
Garden Services
Grass Cutting
Paving Fencing
Painting &
Light Home Maintenance
01748 884590

G. E. Brown & Son
Building Contractors
UPVC Doors
Windows &
Conservatories
The Old Mill Low Row
Richmond DL11 6NH
Telephone
01748 886356 or 886407

Who needs a trouser press?

We offer breakfast with fresh fruit and yogurt, bread from our local baker, eggs from free-range hens and all the books you can read!

Bed & Breakfast
at
2 Bridge Terrace
Reeth
Richmond DL11 6TP
Telephone
Jennifer Davies
01748 884572

SWALEDALE FESTIVAL

Elizabeth Carter, the Festival Coordinator, and the Festival Committee wish to convey their tributes and appreciation to the many persons who worked so hard, and gave so freely of their time, to make this year's Festival such a success. Without the volunteers who help in numerous roles, from ticket sellers, to programme/poster distributors; from venue hosts/hostess to event organisers a hearty thanks to you all. Your efforts are very much appreciated.

SHARECARE

"Sharecare" is a local voluntary organisation working throughout the two Dales and Richmondshire to provide respite care for carers in their own home. They need to recruit more volunteers in order to provide more held within these two Dales. If you can spare a few hours a day, or even a few hours a month please contact Mrs B Paterson, the Coordinator on 01677 450037 for further details.

BADGERS

Badger digging and baiting is illegal.
You can help.

- Look out for: cars parked in strange places - men with spades and terriers
- Listen for: sounds of unusual activity in quiet spots
- Take details: colour, make and registration number of cars - number of people involved.

If you have any information contact any one of the following:

Wildlife Officer - PC A Summerson Tel: 01609 783131

Dale & Vale Badger Protection Group: 01677 422734/0378 921943

RSPCA Tel: 0990 555999

COVER PICTURE

This month's cover picture "Beasts at the Gate" is by local artist and author Colin Smithson.

OUTRAGED

Outraged is probably the mildest description of a local pensioner and resident of Langthwaite Joan Wilson, at being close to being mown down by two 'mountain bikers' racing along the beckside just below Langthwaite. Shocked and angered by the incident she asked that the Gazette let vent to her wrath against such people. A bridleway is NOT a race track. The rider who came dangerously close to knocking Mrs. Wilson down swerved just in time, bumping into his chum, the pair almost, unfortunately not ending up in the beck. Needless to say they didn't stop to apologise.

REETH & DISTRICT GAZETTE

The Reeth & District Gazette is donating a Shield to Reeth Show to promote and encourage entries in the Childrens Handicraft Section and will be awarded to the Best Exhibit in Classes 328-334 incl. as detailed in the Show Schedule.

A reminder that entries for this year's Reeth Show close on Monday 12th August

It is our policy that the Reeth & District Gazette shall be available free of charge. However if any local outlet wishes to seek contributions for the Gazette to raise monies for any local charity the Gazette will be proud to support that local cause. It must be noted that it is entirely up to the discretion of the operator of the particular outlet and their responsibility to ensure that any monies so collected are donated to the local charity. "Local Charity" is defined as any local organisation, association, event etc, local to either Swaledale and Arkengarthdale or the respective village in either of the two Dales.

DALES CRICKET CLUB

Following their current success the Dales Cricket Club hope to run a second team for the 1997 season. Anyone interested should contact Alan Ambler Tel: 884332.

REETH & DISTRICT LADIES HOCKEY CLUB

Practices for the forthcoming season will begin on Thursday 8th August at 6pm on Reeth Athletics Field, and will be held weekly. All old and new players of any standard will be welcomed. We are also looking for any person who would be willing/able to Umpire some of our matches in the forthcoming season. For further details please contact:

Pam Braithwaite Tel: 01325 718750, or

Sue Iveson Tel: 01969 622530

"A soup for Benevolent Purposes"

Victor Wallis has submitted to the Gazette a Mrs. Beaton's original titled "A soup for Benevolent Purposes" rather too long to reproduce here and produces too vast a quantity rendering it almost totally useless. However the title ".... Benevolent Purposes" does inspire some interesting ideas for local fund raising, here are a few starter ideas.

- A Soup-a-thon - a team competition.
- Individual soup drinking knock-out - Cocker John must be excluded from this.
- Soup & Spoon race.
- Identify all the ingredients - competition.
- If one person can manage 1/3 pint how many cities could one feed? competition - winner has to donate the soup to his or her favourite city or small country.
- Considerate farmers and landowners could leave cups of it along the routes walkers frequent - competition, guess how many minutes it takes to get rid of.

So if you have a cause where this stuff could be put to good use then contact the Gazette.

CORRECTION

The proportions of the ingredients in last month's recipe for Wild Garlic soup should have been as follows;

40>60 leaves of Wild Garlic

3>6 Shallots or 2 Strong Onions

2 small Leeks

6>8 medium sized Potatoes, diced

1/4lb of Butter

11/2 litres of Chicken Stock

Double Cream & Seasoning to taste.

ISLES TAXI SERVICE LOW ROW

Any distance considered
Shopping Trips - Share a fare
take a friend
Private Functions etc....
01748 886558

DALES CRICKET CLUB

Car Boot Sale

The Park Fields Grinton, Sunday
25th August 10am to 3pm
(by kind permission of Mr H Brown)

Cars & Vans £5

Car Parking 50p

Refreshments available on the Field
all proceeds in aid of the Dales
Cricket Club, Reeth

For details Tel: 01748 884370

REETH SPORTS

Monday 26th August from 1pm
Traditional Childrens Sports and
Fancy Dress
Open Quoits Competition
Concert by Reeth Brass Band

REETH & DISTRICT STREET PARTY

By popular request, following the
success of the Street Party last
year a Street Party is again going to
be held on the High Row, Reeth on
Saturday 10th August - Juniors at
11am and Senior Citizens at 2pm.

Further details from
Willy McCleary Tel: 884428

SECONDHAND BOOKS

Bought & Sold at the
BOOKSTALL
Friday Market Reeth
or Telephone Tony Pelton 01748 818703
Paperbacks, Hardbacks, Maps, Music,
Older Magazines
Anything Printed!
Bought & Sold

CALLING ALL BUSINESSES

Now you can do the talking and save
money!

You could benefit from utilising the direct
national and international discount
telephone services provided by World
Telecommunication Corporation Limited
(WTC.) With each telephone call you make,
you will save a minimum of 10% (etc.
mobiles) over the best price BT can
provide, including all of their current
discount schemes.

It is highly unlikely that local business
users will be eligible to qualify for the
maximum discounts currently available,
but they could by using a special
programme implemented with WTC where
all of the combined telephone call volume
determines the discount. So by combining
together even more discounts could be
achieved

It is free to register. There is no catch.
WTC would like your business. For more
details contact Christian Hughes, Tel 01748
884884 or fax: 01748 884834.

THE BURGOYNE HOTEL

On The Green Reeth
Richmond North Yorkshire
DL11 6SN
Telephone & Fax
01748 884292

SPONSORED PRAM RACE

The second Sponsored Pram Race in aid of
the Reeth Fireworks Display Fund
commences at 3pm on Sunday 18th August.

Prizes are awarded for Best Fancy Dress
and Fancy Dress Pram and the route is
from Reeth Bus Shelter to Grinton and
Reeth with a final lap around the centre
Green before finishing at the Bust Shelter.
Certain "refuelling" is expected at the
Bridge Inn, Grinton, the Copper Kettle, the
Black Bull, the Kings Arms, the Buck Hotel
and the Burgoyne Hotel.

The Rules are:

(1) Prams can be any shape or size, they
must have three or four wheels and be
fancy dressed, but no petroleum or
mechanical type of engine can be present
or fitted along the route.

(2) Each "pram" team must consist of a
minimum of two (maximum four) persons
and at least one person has to remain in the
pram at all times.

(3) There are six designated stops at which
the team will "refuel" and get their form
signed.

Sponsor Forms are now available from: the
Kings Arms, Reeth Tel: 884259 or Willy
McCleary, 4 Langhorne Drive, Reeth
Telephone: 884428

Arkleside Hotel Reeth

Dorothy & Richard
Welcome Non - Residents for
Private Dinner Parties
Tel. 01748 884200

RICHMOND SWIMMING POOL

The Pool is now open following major
refurbishment and now includes a superb
Leisure Suite.

OPENING TIMES

Monday > Wednesday 7am > 8pm

Thursday 7am > 6pm

Friday 7am > 7pm

Saturday & Sunday 7am > 7pm

SPECIAL SESSIONS

Monday & Wednesday, Adults only 8 - 10pm

Tuesday, Ladies only 8 - 10pm

Thursday Dales swimming Club 6 - 9.30pm

Friday *Programmed Come/Try

*For further details of all facilities,
programmed, special sessions, special
promotions, etc, contact 01748
85022/824581

VISIT NOT JUST SHEEP

for
Local Crafts
Collectibles
Bric a Brac

at The Green REETH

Jenny Davies and Gaynor
Cheesbrough invite you to visit
their red and white striped tent
(next to Swaledale Woollens) at
REETH SHOW on Wednesday
28th August where they will
jointly display their new outfits:
Patchwork waistcoats with
coordinating skirts or trousers.
Enquiries 884572 or 884544

COUNTRY FARE

Crow was once quite a dish
Four and twenty black birds baked in pie
..... a dainty dish to set before a King.
Those birds were probably young rooks
taken from a neighbouring rookery. Country
people with long memories may recall such
meals.

In times of shortage even the old crow was
not spurned as food. Of course he would
have had his plumage removed, he would
be well cleaned and any residual whiskers
would be singed off.

A simple marinade of crushed Juniper
berries in ale or porter would follow and he
would be well soaked before going into the
pie.

With so many insecticides present in the
food chain the crow would no longer be
acceptable as a culinary delicacy. This
recipe is, regrettably, only an echo of the
past recorded on the tablets of folk
reminiscences.

THANKS

Cleminson - Lane: Lesley and Chris would
like to take the opportunity to thank
everyone for all the lovely cards, presents
and wishes for the birth of their daughter
Sally-Joan.

AROMATHERAPY REMEDIAL MASSAGE REIKI

Una Berry SP Cert A., MISPA
Telephone 01748 884644

CABINET MAKER of REETH Philip Bastow

Invites you to visit & browse around his
SHOWROOM & WORKSHOP
Open 9-5pm Monday-Friday
9-12 noon Saturday

Reeth Dales Centre Silver Street Reeth
Telephone & Fax 01748 884555

INDIVIDUALISE YOUR BUSINESS

Arising out of what I saw at the recent
exhibition in Reeth organised by the Upper
Swaledale & Arkengarthdale Business
Association, it occurred to me that a video
regarding the businesses of the Dales would
be a worthwhile proposition.

My idea would be to make a film of about
one hour featuring the hotels, B&B's, self-
catering establishments, eateries and
places to see and visit in the area from
Grinton to Tan Hill via Swaledale and
Arkengarthdale. Only those businesses who
participate in the costs would be featured
and each individual business would have a
short introduction to promote their own
enterprise. The video would not only be
useful for advertising the individual
business but also as a souvenir for visitors
to purchase, take home and show their
friends what beautiful dales we have.

The video would be made by Mike Porter of
Richmond, who already has quite a library
of scenes in the dales which could be
incorporated, some new footage would be
necessary.

If you are interested in participating or
have any ideas yourself, please let me
know, without committing yourself to
anything. I will then try to arrange a
meeting to discuss ideas further. I don't
know how much it would cost in total, the
individual share would be dependent on the
number participating.

I look forward to hearing from you soon.

George L.Birks The Rigg Arkengarthdale
Richmond DL11 6EW Telephone 01748
884272

LATE NEWS

An Australian TV Company is to visit Reeth
in the Autumn to make a 2hr programme -
full details next month - but they are
seeking persons to interview on a variety of
subjects.

PARISH COUNCILS

REETH

Millennium Bid more ideas are coming
forward in support of the Council's
proposals.

Working with the National Park the Council
is preparing plans to enhance the Green
which include recobbling of the High Row,
creation of resident parking areas by the
War Memorial and Congregational Church,
and restoring a cobbled area for the market.
Other ideas to date include a Bandstand and
repairs to the village clock.

Highways matters a number of concerned
residents were present to discuss the
problems of parking on Silver Street.
Regrettably the additional No Waiting
restriction have not been actioned and
therefore the Council has not been able to
monitor what improvements this Order
would make. The indiscriminate parking by
visitors and person using the Bakery make
this an area of concern. Residents are
concerned that they have nowhere to park
their vehicles in front of their respective
properties, but it was pointed out that no
road user has an absolute right to park on
the Highway. The problem is the proposals
to erect marker posts to define the footpath
by the Fire Station to prevent this footpath
being continually obstructed by parked
vehicles. There are other areas in Reeth with
similar parking problems and those
residents park their vehicles on the Green.
Car Parking remains a contentious problem
especially as Reeth has no "formal" Car Park.

Recycling bins because of lack of funding
Richmondshire DC are unable to proceed
with the proposal for recycling bins due to
the requirement for such bins to be
screened on the proposed site which is
currently owned by the Rural Development
Commission.

Street Lighting hopefully the final phase of
the current scheme will be completed over
the next two months and residents in
Fremington should also be seeing the start
of works.

Market the number of stalls has increased
and there is a proposal to enable electric
power to be available. Costing are being
obtained and the proposal may be
considered as part of the Millennium Bid.

Grass Cutting the Council is undertaking
more grass cutting with the area but
remains increasingly frustrated with the
problem of Quaker Flags for which
Richmondshire DC has now accepted
responsibility. Dog fouling in the
playground is becoming a problem.

Public Order regrettably there have been
certain problems with persons attending
recent Discos at the Buck Hotel. A number
of complaints have been made to the
Council which unfortunately are outside
their control and have been referred to the
respective authorities. However the Council
does support these complaints and is very
concerned about the apparent poor
response from the local Police. A liaison
meeting with the Police and other local
Parish Councils is being held in the
Memorial Hall later this month. Public
Order will be one of the many issues raised.

Arkle Beck following a site meeting with
the National Park about their proposal to
reinstate the river bank and footpath near
Storthwaite Hall it was agreed to support
the proposal to utilise natural resources in
the area, ironically using ideas from the
leadmining era.

Memorial Hall & Local Radio see features
Next Meeting - Thursday 29th August, 7pm
in the Memorial Hall

COMMENT

Welcome to our First Year Anniversary Issue.

Yes folks believe it or not we've been going for twelve months. Blame Reeth Parish Council for having the courage to support us for the first three issues.

From the very first issue the response has been staggering and the Gazette has grown to be a very popular local Magazine for the residents of Swaledale and Arkengarthdale. The Gazette is the best way to circulate information and stories around the two Dales, promote local charities and good causes as well as local businesses.

It is very rewarding to the small band of volunteers that we are so popular and we are very grateful for your support, contributions, comments, etc.

The size of the magazine, and its circulation has grown steadily. We have been successful with grant-aid to ensure the future of the Gazette. They say the first year is the hardest!

Many items are becoming regular features. Local people like to read about their Parish Councils, the cartoons are eagerly awaited and the word search competition has a strong following. People up the Dale complain bitterly if they don't receive their copy the same time as we distribute around Reeth.

With your support we can only get better. We apologise for the problems with the photographs last month but we keep experimenting to improve the quality of our publication. Some of the services ancillary to our publication, like photocopying and leaflet production are benefiting businesses and local charities alike.

Please keep the letters and contributions coming. In September we hold our Annual Meeting. We are open to suggestions for improvements, we are here to stay so use

us, tell us your stories people do like to read them.

This month's contributors are, Eleanor Reddington, Richard Birks, Elaine Johnson, Lawrence Barker, Major Williams, Matthew Frankland, Andy Kluz, David Perray, Gough Wilson, and Margaret Rutter.

Thanks our advertisers; to the many outlets who help to distribute the Gazette and the band of folders who meet over tea and biscuits to collate and fold each issue.

Peter Brant

Plans Drawn & Specifications Prepared for all types of building work

Planning & Building Regulations
approvals obtained

ADD VALUE TO YOUR PROPERTY!

contact: Paul Hodgson
Rosedene Gunnerside Swaledale
Telephone & Fax 01748 886568

QUIZ

E	R	T
L	S	R
G	N	A

See if you can make 110 words of four letters or more using each letter only once. The letters also make a nine letter word, what is it? Small prize for the first longest and complete entry drawn.

Drop in your entry to the Post Office by
22nd August

Last months prize winner was Paul Johnson



"HUGH, PUGH, BARNY MAGROU
CUTHBERT, DIBBLE AND GRUB!"

REETH BRASS BAND

The new cassette, REETH GREEN, by the Reeth Brass Band playing a delightful selection of light classical and popular music is selling very well. It is on sale in most local establishments and priced at \$5. It may also be purchased by post from:

Mr. Kevin Hutchinson Scar Lodge
Arkengarthdale DL11 6RG at \$6 which
includes postage and packing.

Engagements for August

August 2nd Songs of Praise Evening,

7.30pm in Reeth Methodist Church

August 18th on Scorton Green at 3pm and

at Scorton Feast Service at 6.30pm

August 26th at Reeth Sports

August 28th at Reeth Show

ARKENGARTHDALE

CHURCH of ENGLAND SCHOOL

End of term was celebrated with a superb concert with all the children participating, collectively and individually. Certificates were presented for swimming. Awards were given to Christopher Harker (The Wickham KS2 shield) and Martin Birks (The Mrs. Cownie cup) for overall effort. The Reverend Peter Midwood presented Bibles to leavers Jemima Stubbs, Sarah Esarte Sarries and Martin Birks.

Be
prepared
for the
life you
don't yet
know.

PENSIONS

LIFE ASSURANCE

INVESTMENTS

PROTECTION

MORTGAGE SERVICES

Contact Will Pedley on 01727 836511
or at home on 01582 620619.

Will Pedley BA, Ph.D Financial Adviser.

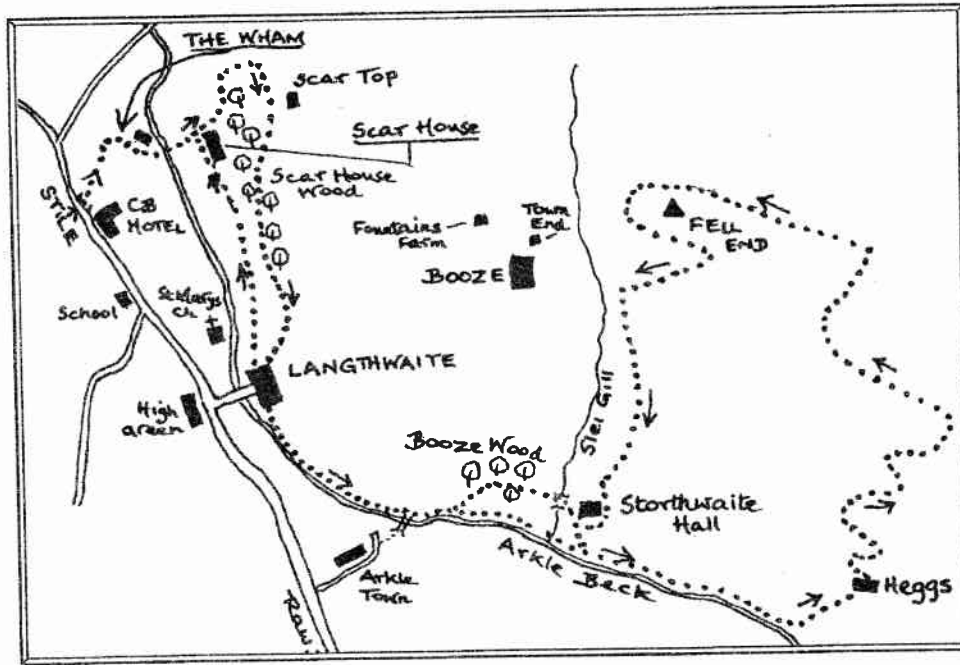
Representing only the Allied Dunbar Marketing Group, which is regulated by the Personal Investment Authority, in relation to life assurance, pensions and investment plans bearing Allied Dunbar's name.

For all your
financial planning



Douglas Mairs & Sons
Established
1935
COAL MERCHANTS
WEST AUCKLAND
Regular Deliveries
Throughout the
Dales Area
Competitive Prices
Telephone
01388 833616 or 832884

A WALK OF ENCHANTMENT



No scenery in all Arkengarthdale gives the intending walker a more enchanting view of what to expect from this wonderful panorama from near the CB Hotel, above Langthwaite. You will be almost bound to say to yourself: "Hey-ho! What a marvellous countryside! What the deuce an I doing here, wasting time?" and off you go.

Squeezing through a stile near the Hotel, with an optimistic sign "Fremington 4 miles, Hurst 6 miles," you trot down into a small valley called The Wham, past the Gamekeeper's Cottage (the Old School was here up to 1830, when it moved to where it is now) and the cross the Arkle Beck into the grounds of Scar House.

It always comes as a bit of a surprise that there should be a right of way here, so close to the house, but the place is occupied mainly during the summer months, when all sorts of exciting events take place, as, for instance, when "Mr Tom," son of Sir Thomas Sopwith, used to come across in his

blue-and-white helicopter and land on the lawn! Or when Sir David Frost, the famous BBC presenter, with his wife (youngest daughter of the Duke of Norfolk, the present owner) is collected at Newcastle Airport by Jake Stubbs, the local taxi-driver, in his positively regal-looking silver-grey Mercedes.

But the ace car of Scar House is its position, nothing less than magnificent against superb woodland background. We are thankful to be walking through the dark, mysterious and romantic beechwoods, inches deep underfoot with fallen beech leaves - just the place, perhaps to discover a Ghost Orchid, one of the rarest of the orchid family. The Collins "Guide to Wild Flowers" says of it: "Recorded only in nine years in the past hundred; stem 5 inches high, straw coloured, flowers of palest yellow with a very pale mauve tip. Found only in leaf litter in beech or oak woods, May to September." Your chances of finding a Ghost Orchid are

about as good as your winning the National Lottery, what?

This lower-strewn footpath descends fairly rapidly to Langthwaite, with an unexpected glimpse of St Mary's Church, one of the 300 churches built by Parliament in about 1820, to counteract the dangerous revolutionary ideas spread by the recent French Revolution. The money was provided by the Treasury Commissioners and the churches were built in industrial areas (of which Arkengarthdale was certainly one in those days.) It so happened that the church at Arkle Town had just collapsed and St Mary's replaced it. All these "Commissioners" churches, as they were called, were subject of strict conditions for building: chimney from the church heating must be concealed; go-down to be provided for village fire engine; pavement to be built all round the church; all clear glass windows and no stained glass anywhere. The concealed chimney and all-round pavement can be seen from our footpath. One wonders what happened to the fire-engine? It would be quite a treasure nowadays.

Langthwaite is at the foot of a steepish hill and reminds you of Clovelly. Indeed the first cottage you pass is called "Clovelly." Perhaps occupied by some homesick folk from Devonshire? However, Langthwaite itself is like nowhere else. For instance, some folk here have lived all their lives in the house where they were born - and how many people can say that nowadays, I ask you! This small village too, is quite a favourite setting for film-makers, who descend upon the place with huge cameras on tripods and squads of highly skilled scene shifters and prop-men. In an hour or so they will erect a whole row of stone cottages, all of plywood sheets bolted together, and before you can say "Shiver my timbers" they have filmed a whole episode

of "Emmerdale Farm" or "All Creatures Great and Small." We do live in a wonderful world.

Leaving Langthwaite we continue alongside the sparkling Arkle Beck with its bird life; gossanders, muscovy ducks, mallard. We cross the floor of Arkengarthdale and then plunge into Booze Wood. Though not large, Booze Wood has a powerful aura of mystery and hidden depths - which indeed it has. The opening of a lead level stretching as far as Booze, but now filled with water forming an underground canal perhaps half a mile long, lies behind a jungle of undergrowth not easily spotted. (I only heard it from a local man who had sailed the whole length of this canoe in a canoe!) Then, in the early morning, you may see a deer in these woods, standing "at gaze," as the heraldry people term it: in other words, completely motionless, alone with his own thoughts, if any.

Emerging from Booze Wood we suddenly catch sight of Storthwaite Hall (locally pronounced "Sturfit") in fields at the foot of the mighty Fell End. Its Norse name exactly describes its position as it was more than a thousand years ago, for it means "a sheltered area for cattle" - and it still is exactly that.

Another mile or so along the Arkle Beck brings us to that delightful cottage within its own wood, Heggs. Sometimes young owls, in a fit of absent mindedness, drop down the chimney into the bedroom, and have to be caught and re-launched from the bedroom window back into outer space, as it were.

We now face a fairly tough zig-zag path with a gradient of say 1 in 4 up to the top of Fremington Edge. Can we do it? Well, the footpath shows every sign of having been well-used in the past, so....

At last Fell End is reached and you gaze down upon the world below with a feeling

of quiet satisfaction. Can we do it indeed! We've done it! Up here we might be in a hot-air balloon, drifting slowly and motionlessly over the landscape below. There just below is Booze, a huddle of tiny houses built for lead miners almost two centuries ago, but now either derelict or renovated as holiday cottages. The steep side of Fell End must have been extensively mineworked, as we can see on our way down past the huge pinkish-grey spoilheaps which dominate the scene hereabouts.

The day is far spent, and we are thankful to be on our way home past Storthwaite Hall. In fact, we are beginning to feel that it would not be a bad thing to call in at the Red Lion or perhaps the CB Hotel, and of course not forgetting Jake Stubbs's little shop in Langthwaite.

Major FTC Williams

VISIT Swaledale Folk Museum



Open every day 10.30 to 5pm
from Good Friday to
October 31st.

Contact the Curator
Mrs. D.J. Law 01748 884373

"CELEBRATION 10"

A new book by W R Mitchell (Former Editor of the "Dalesman" Magazine) has been recently published to mark the 10th Anniversary of the re-introduction of local services on the Settle-Carlisle railway.

The book "Celebration 10" recalls the return of local services and some of the subsequent events which have brought the Settle-Carlisle into good condition - among them the £3m restoration of Ribbleshead viaduct, improvements to Settle station, including the installation of an iron footbridge brought from Drem, on the East Coast mainline, and work which led to the provision of a new northbound platform at Ribbleshead.

Alan Whittaker, of Railtrack, who provides an introduction, notes that Railtrack will continue to work with local communities, interested parties and other railway businesses in an effort to ensure that progress is maintained.

The glossy booklet, with colour, cover contains a number of black and white photographs of events over the last 10 years is printed by Lamberts of Settle. The booklet, which costs £2 is available at points between Settle and Carlisle or by post at £3 incl. of p&p from (payable to): Settle Antiques Agency, Kirkgate, Settle, BD24 9DX. (Timetables for the Settle-Carlisle line are available from National Park and Tourist Information Centres.)

"DISCOVERING THE YORKSHIRE DALES"

Hidden Places, Curiosities and Strange Events with John Ward.

The Yorkshire Dales is a land of infinite variety and sheer delight. Many visitors come to walk its lonely felltops, along its limestone escarpments or by its rivers. But there are lots of more largely undiscovered attractions to see in the Dales. Newcomers

will be intrigued, and even those who know the area can discover new secrets. For those wishing to explore the Yorkshire Dales, there is plenty to see. So if you want to know where to find:

- where men had to pay a penny fine if they were late for work
- a naked man on display for all to see
- King Arthur's birthplace
- a resting place for pall bearers
- the highest public house in Britain
- where JB Priestley's ashes lie
- a huge stone pepper pot and a space ship
- the most beautiful tomb in Yorkshire
- a sunken village

Then why not go "Discovering the Yorkshire Dales" with John Ward? With many years of exploring the area, John Ward is the ideal guide to lead you to and describe over a hundred of the Yorkshire Dales's hidden places, oddities and strange customs. The book included the popular "curiosities", but also many fascinating places which rarely feature in guidebooks, all organised into ten sections, each designed as a day-long excursion into the Dales. Every item is illustrated in colour or black-and-white, and the book has easy-to-use maps too!

"Discovering the Yorkshire Dales", published by Smith Settle, provides an up-to-date 'unusual features' guide to the Dales, fascinating to residents as well as to the tourist, is available from all good bookshops priced £7.95 (PB)

Applegarth Designs

Wedding Dresses Ballgowns
Dressmaking and Alterations

Miss R.J. Atkinson
East Applegarth Farm
Westfields Richmond
Telephone: 01748 822940

"FORGET"

I blame age, but I also point the accusing finger at the job. Have you noticed though how you forget more as you get older.

Mind you I've never been entirely free of the condition. As cub reporters on the "Northern Echo," I can't remember how many years ago, forgetfulness was one of those bogey men that all of us were constantly having to tussle with. I suppose as journalists we're required to assume vast amounts of information quickly and then regurgitate it. I was going to say truthfully and accurately but I learnt long ago never let truth stand in the way of a good story. Shorthand was supposed to help by my hundred words a minute deteriorated to about seven within months.

But what makes forgetfulness even more intolerable is that it is so often accompanied by embarrassment. For example the time I was invited to go out with the Redcar lifeboat. I duly turned up at eight o'clock in the morning as requested only to find the clocks had gone forward the previous night.

There was also the time a very prominent member of our Royal Family was introducing a visiting European Monarch to the Prime Minister. As hands were held out to shake, his mind went a complete blank - he'd forgotten the name. "May I present the King of Norway," murmured our hapless royal. As the hands met the visiting royal smiled at the Prime Minister and said, "Sweden."

A one-time acquaintance tells of the time he forgot what an appalling cook his landlady was. One especially lucrative week expenses wise, he'd bought himself a fine sirloin steak, a good bottle of claret and a bunch of fresh asparagus and left instructions with his landlady that she should prepare these for his supper while he covered an evening council meeting. He duly returned later than usual to find a note on the kitchen table. It read, "Dear so and so. Your meat is

in a stew in the oven, your wine's been in the fridge all day and your bluebells are in a vase on the mantelpiece."

Of course there's calculated forgetfulness too.

Another town, another landlady, a widow of rather mature years. She has a reputation for being a bit of, shall we say, a man eater. This lady already looked after several journalists who were well aware of her reputation, especially after a couple of port and lemons. A colleague who's been kicked out of his digs was on his way over to occupy one of her rooms so out of devilment they told her this chap was a sex maniac of monumental proportions. On no account was she to find herself alone in the same room with him and at all times keep him to the front.

I should add it was their habit to meet at the local pub at eight o'clock sharp. At about half past eight he turned up with a sort of hunted look in his eye. "What the dickens did you tell that woman," he gasped, "As soon as I arrived she insisted on taking me upstairs and showing me very minute detail of the bedroom. And then when I tapped my watch and aid it's time for my regular howsyourfather, she threw herself on the bed and said if you must, you must."

The reason I'm relating these stories is that months ago I promised to write for the Reeth & District Gazette, only I forgot. I only hope I remember to post it.

Andy Kluz from Tyne Tees Television

REETH HOME GUARD

Following on from our July Issue, with apologies for the smallness and quality of the photographs, which nevertheless have created considerable interest.

Lawrence Barker has kindly provided us with the following information:

To the best of my knowledge the local Home Guard was founded in 1940s.

They were initially known as the Local Defence Volunteers (LDV). During this early period identification was by a simple khaki arm band. As the War progressed proper uniforms were provided. Instead of members providing their own firearms, usually shotguns, they were issued with rifles. In the case of Swaledale and Arkengarthdale these were Canadian "Ross" 300 calibre. They were very heavy but accurate.

There were three platoons, ie: Muker, Reeth and Arkengarthdale. Each platoon had its own officers and NCOs. Some of these were World War One veterans. Exactly how the various ranks were decided upon is not clear. I believe that Tom Porter and Jack Wagstaff were Sergeants in World War One. The Green Howards Battalion were initially in charge of training and presumably of the first appointments. These were, if my memory does not fail me. Company Commander: Major Tom Porter (Postmaster); 2nd in Command: Capt. Jack Wagstaff (chert quarry leasee); Platoon Commander: Lieut. Jim Kendall (Butcher). The NCOs were: Sgt Major: Harry Chapman (Highway employee); Q.M.Sgt Simon Cherry (Farmer); Sgts Jimmy Allinson (highway employee), Robert Morgan (Joiner), Norman Sunter (Farmer), L/Cpls George Graham and Tarn Bainbridge (Farmers), Jimmy Atfield (wagon-driver). There may have been other NCOs which I cannot recall.

The photograph does not represent the whole unit. Only certain members were chosen to shoot in the competition at Strensall. Major Porter and Captain Wagstaff were in overall charge of the three platoons and would thus not be in the Reeth Platoon photograph. Other members would be off duty. Several of those on the photograph, me for one, did not take part in the shoot and it remains a mystery as to why

they were included. From left to right:

Back Row: ?, Arthur Thompson, Jack Waiton, Lawrence Barker, Ben White, Alan Blenkiron, Albert Hammond, Robert Bainbridge.

Middle Row: ? Corsan Alderson, John Peacock, Joe Jackson, ?, Tony Swainston, Alan Scarr, Stanley Bainbridge, Freddy Dodds, Cecil Duffin.

Front Row: Ralf Porter, George Graham, Norman Sunter, Robert Morgan, Harry Chapman, Jim Kendall, Simon Cherry, Jim Allison, Jimmy Atfield, Tarn Bainbridge, Oliver Kendall.

The photograph was taken before the supper room was added at the western side of of what is now the Memorial Hall, which was used as a meeting and training point for the Reeth Platoon.

With regard to the Cup and its whereabouts, I should imagine that as the photograph was taken in 1945 and the Home Guard was disbanded shortly afterwards, that it would be returned to the Green Howards Depot at Richmond although I have no evidence for this. Presumably the Cup was "shot for" annually.

The weapons used by the Home Guard included the standard issue rifle some with cup discharges, the Sten gun, the Lewis gun, the P.I.A.T. mortar, the Black Bombard and even a mobile 2lb anti-tank gun.

One of my happier memories is of a Home Guard athletic/sport event held at Catterick Stadium. The only event which Swaledale/Arkengarthdale company won was the tug-of-war. Bobby Guy of the Muker Platoon was the anchor man and hefty men from other units ensured a complete whitewash of all opposition.

I have a photograph of the Home Guard Brass Band and this brings back many memories. The Band comprised of Home Guard members from all parts of the two Dales but more about this in a later issue.

ELITE CINEMA LEYBURN

YOUR CINEMA IN THE DALES
FILMS FOR EVERYONE
VARIED PROGRAMME
OPEN THURS, FRI & SAT
COFFEE LOUNGE
LICENSED BAR (Patrons only)

BOX OFFICE
01969 624488

THURS, FRI, SAT 10.30 > 6.00
FOR ADVANCE TICKET SALES & INFO
WHEN CLOSED PHONE ABOVE NUMBER
FOR RECORDED MESSAGE GIVING DETAILS

PUNCH BOWL INN

Sunday Lunch in
The Parlour

Warm and cosy
restaurant style service
Roast Dinner £5.95

Starter
Roast Dinner
Sweet
Coffee & Mints
£9.50

(children under 12 yrs half price)

Punch Bowl Inn
Low Row Swaledale
01748 886233

LOW FAGGERGILL COTTAGE

Cosy holiday cottage on a Dales 'working'
hill farm with breathtaking views
of Arkengarthdale - Sleeps 2
Ideal base for walking, biking and touring
the Dales or simply enjoying a quiet holiday

Mrs. Gladys Atkinson
Low Faggergill Farm Arkengarthdale
Richmond North Yorkshire DL11 6RR
01748 884550

THE MAGNIFICENT SEVEN

In all the Northern dales there is nothing more exhilarating than a walk across the heather moors of the high uplands, and especially so in late Summer when they are on that deep purple hue that is so attractive on the eye.

When anyone talks to me about their walks across the Moors they invariably complain about how few birds there were to be seen. They are quite wrong of course, as the heather moors can be most rewarding of all birdwatching areas, but it does take a certain amount of time and patience. In fact it is possible to see as many as eight species on a good day during the breeding season in high summer, when the adults are feeding their young. These range from the very common to those only frequently seen and, if you're lucky to the very rare.

The birds of our uplands reflect both the original, natural diversity, and the further modifications imposed upon this by man. The Red Grouse is the best example of this, and now depends on the abundant heather for its main food. The moors are carefully managed to achieve this, and heather burning is important giving fresh grazing for sheep and new shoots for Red grouse. But too frequent burning, and too many sheep can wreck a heather moor, turning it into a waste of purple moor-grass and bracken.

Of the remaining seven, the Curlew, synonymous in everyone's mind with the uplands, likes the damp and hilly fields with wet heather and cotton grass. There they are big enough to stride through the taller vegetation and still keep a clear look-out for danger.

Many birds widespread in the uplands have successfully exploited niches here, but are equally characteristic of contrasting habitats.

The Wheatear, so named because of the white flash on its tail is widespread and is

among the earlier spring arrivals. The erect posture and dapper appearance are distinctive. Feeding off the ground it is constantly bobbing and bowing as it scurries to find a vantage point, its flight is low as it dashes from perch to perch.

The Whinchat is smaller but equally active with a prominent black and white head pattern. It is another summer visitor, but is less common than the Wheatear preferring more higher ground.

Yet another summer visitor to our moors is the Ring Ouzel sometimes called the "mountain blackbird" which resembles in behaviour and appearance. It is very shy, always a ridge away, with a wild dashing flight among the rocky ghylls. It has a brilliant white throat patch visible from afar particularly on the males, and a clear carrying song, rather like a subdued blackbird.

The Golden Plover is a typical bird of the uplands. Its future wellbeing depends on the way the land is used, because it is very sensitive to habitat changes. They are now in their resplendent breeding plumage after arriving back on the moors in early March, often congregating on the higher fields to feed. On fine days they will spread out in pairs over the open moorland and engage in a graceful display. They depend on a system of rotational burning which leaves enough patches of short regenerated heather fairly evenly distributed. Large areas of old tall heather simply excludes them.

The Short-eared Owl is one of two British Owls that can be seen during the day. Hunting low over the moorland, the flight is wavering with glides on long broad wings. They move about different areas of the moor to breed each year depending on the food supply.

Finally, the Merlin - a very small falcon about the size of a Mistle Thrush, with a dashing flight over the heather, following

every twist and turn of its quarry only perching on a low vantage point. It is now very scarce and unfortunately is in decline as a breeding bird in Britain.

All the birds discussed enjoy the full protection of the Law, and it is an offence to disturb them in their nest. Although we do not have the "right to roam" at will, the birds do in order to survive.

Many of these species are only Summer visitors to the moorland. To take advantage of the congenial conditions to rear their young before returning to a more hospitable winter haunt. The upland environment can be very hostile in winter, and the frequency of frost and snow on the high slopes severely limits the number of birds that can cope.

David Perray

Yorkshire Wildlife Trust.

English Nature will have a stand at Wensleydale & Muker Show and will be pleased to answer any questions.

DON'T PASS
THE BUCK
CALL INN

Large choice of bar meals
lunchtime & evening
10 en-suite bedrooms with
colour TV, tea & coffee
making facilities
Family rooms available
THE BUCK HOTEL
REETH
01748 884210

ARKENGARThDALE CHURCH of ENGLAND SCHOOL

"Arkengarthdale children are a credit to both the school and their parents" stated the report by the Office of Standards in Education after their recent inspection of the School.

Inspectors commented on "The close family atmosphere in the school" and said that "Teachers are warm, positive and encouraging, creating a secure learning environment. The pupils response to their teachers, attitudes to learning, standard of behaviour and the quality of relationships are excellent".

The report, which delighted both staff and governors praised the school's management efficiency and also the children's achievements in all subjects. In eight out of ten lessons observed, standards were above average.

Teaching staff were said to be "Highly committed, working effectively as a team". "Governors provide valuable support" and "the contribution made by parents to the life and work of the school is outstanding".

Head Teacher Mrs Patricia Bumby express her pleasure with the report and said "All staff have clear, high expectations in terms of children's learning and behaviour. We expect hard work from everybody and the report reflects what we have achieved working as a team of dedicated and caring staff, governors and parents".

Chairman of the Governors Mr David Williams added "We are delighted with this report and will use it to continue to build on the valued achievements of the school so far".

TEXT/ARTICLES DEADLINE FOR THE
SEPTEMBER ISSUE 23rd August
NEW ADVERTISEMENTS (not Market
Place ads) 14th August

DALESBUS

With the subject of public transport in the Dales remaining topical - the Rural Development Commission has produced a report on Rural Transport and last year, once again, the subject of a Royal Mail Postbus for Swaledale was again rejected because of the combination of economic and geographic impracticalities - we belatedly feature an article on the Dalesbus Network.

The Dalesbus network is operated by "Harrogate & District Travel" and "Keighley & District Travel," both of which are subsidiaries of Blazefield Holdings and both of which are 'descendants' of West Yorkshire Road Car Co. Ltd.

They are probably the only National Park leisure services in the UK operated as commercial services which run on Sundays and Bank Holidays until September.

A vital feature is the "Explorer" ticket which is a day rover ticket and covers the Dalesbus services and the urban links from (1) Leeds, Harrogate, Ripon, and Keighley, and (2) York, Harrogate, Leeds, Bradford, Keighley and the Worth Valley.

The services together offer many more opportunities than is evident from a cursory look at the time table. Most Dales villages are served. One can walk from one route and return on another. One can start a holiday returning on a different day, providing one remembers which days have services. One can do outward trip on the Settle-Carlisle train service and return a day or so later on the Dalesbus. Some very interesting trips are possible for those who pack light rucksacs.

There are three routes serving Leeds to Hawes, the main one via Wharfedale, one via Swaledale and a new one via Malham and Ribblesdale. It is also possible to do several scenic excursions. The services are geared for visitors, but they could be used

by Dalespeople who are going away for a few days or longer (students, people visiting relatives or working away. The services are as follows:

800 - The original Dalesbus route, which started in the 1950's. The basic route is Leeds-Guiseley-Ilkley-Grassington-Buckden-Aysgarth-Hawes with a Saturday journey also serving Bradford and Keld. This bus serves Lipton, Kettlewell, Aysgarth, Hawes, Ingleton and Keld Youth Hostels.

803 - Leeds-Harrogate-Ripon-Leyburn-Reeth-Swaledale-Hawes. The outward journey calls at Keld, and using this it is possible to get from Keld to Leeds via the 800 route. This bus serves Ellingstring, Grinton, Keld and Hawes Youth Hostels. Many village walks are possible on route. By using the X97 an earlier start is possible which uses the 803 to return. Stronger Walkers can thus do Leyburn to Reeth via Castle Bolton, Marrick Lane end to Reeth.

This route serves Malham, Stainforth and Hawes Youth Hostels.

805/807 - This is a NYCC supported service to link into the Settle-Carlisle service. It also provides links from Ribbleshead and Garsdale Stations as well as a circular trip from Hawes via Muker, Reeth, Castle Bolton back to Hawes.

809 - This is a high summer service. Keighley-Skipton-Grassington-Buckden-Aysgarth-Leyburn. It provides an onward connection to Richmond on the X97.

X97 - Leeds-Harrogate-Ripon-Leyburn-Reeth-Richmond.

For full details of the Dalesbus service ask for a copy of "Dales Connections" from your National Park and Tourist Information Centres or Tel: 01423 566061 or 01535 603284

OTHER DATES OF NOTE

September 4 Muker Show

Dalesbus services serving Swaledale

These services operate only in the summer.
X97 and 803 also operate on Bank Holiday Mondays.

Fridays from 26th July until 30th August 1996
Sundays from the end of May until 29th September 1996

There is also a year round Monday to Saturday service from Richmond to Gunnerside, extended to Keld on Tuesdays and Saturdays

Full details from your National Park and Tourist Information centres. Ask for a copy of 'Dales Connections'

No	Friday X97	Sunday X97	803	Friday X97	Sunday 807	X97	803
Leeds	09.30	09.30	12.20	Hawes market	11.55 ♣		17.10
Harrogate	10.05	10.05	13.10	Keld Butt Rigg	12.25		
Ripon	10.35	10.35	13.45	Muker	12.35		17.31
Middleham	11.25	11.25	14.20	Gunnerside	12.44		17.40
Leyburn	11.35	11.35	14.30	Richmond	15.20	15.20	
Reeth	11.55	11.55	14.50	Reeth	15.45	12.55	15.45
Richmond	12.20	12.20		Leyburn market	16.05	16.05	17.55
Gunnerside			15.05	Middleham	16.15	To Hawes via Askrigg	16.05
Muker			15.14	Ripon	17.15	16.15	18.30
Keld			15.25	Harrogate	17.45	17.15	19.05
Hawes			16.05	Leeds	18.20	17.45	19.35
			To Leeds			18.20	20.15

♣ from station yard

Service 800	Saturdays	operates from 25th May to 28th September 1996
Leeds	09.55	Keld 16.35
Hawes	13.17	Hawes 17.15
Hawes	14.45	Hawes 17.15
Keld	15.25	Leeds 20.25

This service runs via Aysgarth, Wharfedale and Bradford.

There is a Leeds to Hawes service on Sundays/Bank Holiday Mondays at different times.

"TIME IN LOO....."

We have been coming to Reeth for twenty years or so now, at holiday times and on other occasions. When the public toilets were refurbished a few years ago, we were impressed by the thought that had gone into providing a disabled toilet as well. Since then, a friend of ours with a spinal injury has become confined to a wheelchair. Talking to her, we find that many places that provide disabled toilets do so with a "sting in the tail."

The disabled toilet is locked, and the wheelchair-bound person must - in a pub very often - go up to the bar, which is above their head-height in a wheelchair, and shout at the bar-man/maid that she wants the key to the toilet. How crassly embarrassing! Why must this burden be added to their disability?

Now we come to Reeth itself. Imagine that you are our friend, in an adapted car, perhaps. She drives into the village, see there is a disabled toilet - at last! There is no parking adjacent to the toilets, so she parks on the cobbles. Once she has got her wheelchair out from behind her driving seat, she must then make the spine-jarring journey to the toilets - only to find that the key is "at the Gift Shop." Repeat the spine-jarring journey over the cobbles, to the Gift Shop. Embarrassment of having to ask for the key. Repeat the spine-jarring journey so that she can finally get to use the toilet. Then the fourth repeat of the spine-jarring trip over the cobbles, to return the key to the Gift Shop (more embarrassment.) At last, she can get back to her into her car.

It's a bit much, isn't it!

We think that Reeth Council can provide a better service than this for disabled people.

Judith and Adrian Bull

Linthorpe, Middlesbrough.

Editor's Note: the toilets are provided and operated by Richmondshire District Council and your letter has been passed onto them for further comment.

NEIGHBOURHOOD WATCH

In the July issue it was reported that a meeting convened by local Police in the Memorial Hall on auto crime was poorly attended. Sadly your Neighbourhood Watch representatives were not made aware of the meeting until the day before. Not surprisingly many of us were therefore unable to attend due to prior engagements.

Having said that I understand that one of the main aims of the meeting was to make us more aware of auto crime. The success of Neighbourhood Watch Schemes and video surveillance in the nearby cities is resulting in the spread of such crimes to outlying districts. We should all therefore be constantly aware and take extra care over the security of our vehicles.

A small success story was reported at the beginning of July. A particularly aware and alert person reported seeing a vehicle in apparently slightly suspicious circumstances at Low Row early one morning. As a result, the vehicle was traced to Durham and eventually led to the apprehension of a ring of thieves involved in the theft of quad bikes. This clearly proves the necessity to report anything even slightly suspicious to the police as soon as you are able.

Finally, my Neighbourhood Watch area begins at Little Ashlands (just north of the Buck Hotel) and the row of cottages north of the Pot Shop and extends north up Arkengarthdale Road. Anyone living in that area who is not a member of Neighbourhood Watch and would like to join should contact me on 884758 any evening.

D M Pleasant

One presumes that Mr. Sedgley of Shropshire did not see/read the anonymous letter from 'A Walker' in the April edition of the Gazette. Had he done so then I would hope he would have appreciated why two residents chose to make such comment, which clearly seems to have caused him such offence. Equally it is my belief that farmers, landowners and residents do make welcome considerate visitors to our most beautiful and unspoilt area of the country, unfortunately not all are or so appreciative.

To note Mr. Sedgley, the half mile or so stretch of the route taken by the Swaledale Marathon (runners & walkers) through Whaw, rendered 4 plastic drink bottles (3 in the beck), 5 drinks cans and 4 small drinks cartons, none of which were there before these people went through!

Richard Birks Whaw

We welcome letters on all topics. Letters should be addressed to the Reeth & District Gazette, c/o The Post Office, Reeth, DL11 6SE and should include the name and address of the writer.

For Sale

Due to time-wasters!

A thriving, easily-run local business is back on the market. Prime location, currently serving hot/cold snacks, meals and drinks. Licensed. Very high margins turnover held purposely below VAT level. Scope to expand. Substantial accommodation including magnificent double aspect beamed lounge with panoramic views along Swaledale. May lease to right person. Tel: 01748 884332 for details.

WILD MUSHROOM SOUP WITH PARSLEY

Six Large Field Mushrooms

1 Large Onion

1 Clove of Garlic

1/4lbs of Butter

Stock

Plain Flour

Double Cream & Seasoning to taste

Parsley for garnish

Clean (do not wash) the fresh field mushrooms and cut into fine pieces, likewise the onion, crush the garlic. Fry together in the butter and seasoning until tender. Allow to cool and add the plain flour (1 or 2 tablespoons full) to make a roux. Add a stock of your choice (chicken produces a pleasant result) reheat and slowly bring to the boil. The amount of stock you will need will depend on how thick the roux was and how thick you prefer the finished soup. Simmer for 20 minutes. Before serving check for seasoning, add cream to taste and garnish with parsley. N.B. To give a 'smooth' soup liquidise before fully boiling.

John Wesley McGavock Grinton

**FUN DAY
DOWNHOLME**
BAR•B•Q - £100 Raffle
Tombola - Cake Stall
Bouncy Castle - Bingo
Coconut shy - Book Stall
Saturday 24th August

News or topical piece share it through the
REETH & DISTRICT GAZETTE

MARKET PLACE

- For Sale: quarter round pink "Dolphin" shower tray and curtain rail - Tel 886338
- For Sale: Jacob skin rugs - excellent selection - Tel 884572
- Logs and Free Range Eggs - Tel 884380
- The Hardy Plant Society - Keen gardeners can now meet regularly at a local Group, for further details including events and garden visits contact Howard Leslie on 884774
- Finest Swaledale Summer Honey for sale Mr G L Birks The Rigg Tel 884272
- Wanted: refridgerator in good condition for Memorial Hall - Tel 884201
- Jack-of-all-Trades Handyman - available for jobs around the home - Phone Martin on 884022
- Aromatherapy, Reflexology. Tel. Olga Ashton 01748 822843.
- Wanted: looking to purchase - Guest House, Hostel, Camp Site, Bunk Barn or property suitable for conversion to value of £250,000. Tel: 0161 755 3027
- Do you have a skill or knowledge that you could pass on to others? Would you like to lead and adult class in Richmond or surrounding area? If the answer is yes please contact Anne Frizell, Community Education at Richmond School on 850171 for details.
- Lost - two peacocks - if found feed only on the finest grain whilst owner collects. Tel: 886021 or 01642 582160

• Lonely Hearts - two dashing young peacocks seek two like minded peahens for outings and possible long term relationships. Interests in feather arranging important, but ability to contribute to the dawn chorus not essential. Tel; 886021 or 01642 582160

• Holiday in the Netherlands - on the east side: Ootmarsum (by Almelo)- stay in our cottage which is situated in a beautiful forestry park, ideal for walking, cycling and riding. The attractively furnished cottage includes a kitchen - fully equipped with cooker, fridge and microwave oven; lounge/dining room with gas fire, radio and colour TV; toilet and shower; 2 bedrooms (one double and the other with two single bunk beds; two cycles are available for use. Price: £160 per week which includes gas, electric and water. For further information contact: Mevr. J.G.M. Krikhaar, De A 78, 7642 HE WIERDEN, The Netherlands. Tel: Ned 0546-576632

REETH & DISTRICT GAZETTE

No material may be reproduced in whole or in part without permission. Whilst every care is taken, the publishers cannot be held legally responsible for any errors in Articles, Listings or Advertisements.

Printed and Published by the

Reeth & District Gazette

c/o The Post Office, Reeth, DL11 6SE

Telephone: 01748 884201

NORMAN F. BROWN

Chartered Surveyors Auctioneers Valuers Estate Agents

We have a wide range of properties for sale in Swaledale and the surrounding areas. Specialist Letting Department, RICS Homebuyers Surveys, Valuations for all purposes.

Offices

14 Queens Road, Richmond, N. Yorks. DL10 4AG 01748 822473

6 Bridge Street Bedale, N. Yorks. DL8 2AD 01677 42282

25 Market Place, Leyburn, N. Yorks. DL8 5AS 01969 622194

Need anything? Trying to sell anything? Job Vacancies? House/Flat to let? etc, etc, Why not use our Market Place/Small Ads column for the quickest results in the Dale. Only 50p per entry - for details Tel: 884201 or call in at Reeth Post Office.

CHURCH SERVICES

in ARKENGARThDALE and SWALEDALE

4th August

9.30am St Mary's Muker
10.30am Reeth Methodist
Low Row URC
Gunnerside Methodist
11.00am Holy Trinity Low Row
Reeth Congregational
2.00pm Low Row Methodist
6.00pm St Andrew's Grinton
Reeth Methodist
6.30pm Muker Methodist
Reeth Congregational
7.00pm Hurst Methodist

18th August

9.30am St Mary's Muker
10.30am St Andrew's Grinton
Reeth Methodist
Low Row URC
11.00am Holy Trinity Low Row
Reeth Congregational
2.00pm Low Row Methodist
6.30pm Marske Methodist
St Mary's Arken'dale
Gunnerside Methodist
Muker Methodist
Reeth Congregational
7.00pm Hurst Methodist

11th August

9.30am St Andrew's Grinton
10.30am Reeth Methodist
Low Row URC
11.00am St Mary's Arken'dale
Reeth Congregational
2.00pm Keld URC
4.00pm St Mary's Muker
6.30pm Arken'dale Methodist
Marske Methodist
Gunnerside Methodist
Reeth Congregational

25th August

8.00am Holy Trinity Low Row
9.30am St Andrew's Grinton
10.30am Reeth Methodist
Low Row URC
11.00am St Mary's Arken'dale
Reeth Congregational
2.00pm Arken'dale Methodist
Low Row Methodist
Keld Methodist
Keld URC
6.30pm Marske Methodist
Gunnerside Methodist
Muker Methodist
Reeth Congregational
7.00pm St Mary's Muker

1st September

9.30am St Mary's Muker
10.30am Reeth Methodist
Low Row URC
Gunnerside Methodist
11.00am Holy Trinity Low Row
Reeth Congregational
2.00pm Low Row Methodist
6.00pm Reeth Methodist

6.00pm St Andrew's Grinton
6.30pm Muker Methodist
Reeth Congregational
7.00pm Hurst Methodist

DIARY DATES

August

- 1 Reeth National Park Centre Open Evening
- 2 Songs of Praise with Reeth Band, 7.30pm Reeth Methodist Church
- 4 YDNP Guided Walk - Haymeadow Heyday, meet at the Farmers Arms, Muker at 1.30pm. Adults £1.80 Children 70p
- 5 Illustrated Talk - Whaw and the Wild Heather by Major FTC Williams in Fremington Sunday School at 8pm. Admission Adults £1.50 Children 50p which includes coffee and biscuits. Proceeds in aid of the Grinton Church Restoration Fund
- 7 Pantry Shelf - 2pm - Reeth Methodist Church
- Guided Walk - Whaw and the Wild Heather with Major FTC Williams. A seven mile walk - meet at Whaw Lane End at 11am. Adults £1.50 Children 50p proceeds in aid of the Grinton Church Restoration Fund.
- 8 Guided Walk - YDNP - "In the Footsteps of Miners" - meet at Surrender Bridge 2pm. Adults £1.80 Children 70p
- 10 - 18 Askrigg Art Exhibition
- 11 Guided Walk - YDNP - Archaeology in Swaledale - Meet at Reeth National Park Centre at 2pm: Adults £1.80 Children 70p
- Guided Walk - YDNP - Kidson, the Classic Circular - Meet at the Farmers Arms Muker at 11am. Adults £1.80 Children 70p
- 12 Closing Date for entries for Reeth Show
- Illustrated Talk - Defending our Homes against the Scots by Jane Hatcher at 8pm in the Fremington Sunday School. Admission: Adults £1.50 Children 50p which includes coffee and biscuits. Proceeds in aid of the Grinton Church Restoration Fund.
- 13 Arkegarthdale Jubilee Club trip to York - Tel: 884510 for details
- Guided Walk - YDNP - Wildflowers & Landscape of Arkengarthdale, meet at the Red Lion, Langthwaite at 2pm. Adults £1.80 Children 70p
- Muker PC Meeting - 7.30pm
- 14 Pantry Shelf - 2pm - Reeth Methodist Church
- 16 Liaison Meeting with Police and local Parish Councils - Memorial Hall
- 17 Street Party, High Row Reeth - see feature
- 18 Sponsored Pram Race - Reeth to Grinton
- Downholme Fun Day Sponsored Walk - Reeth to Richmond, via the "Coast to Coast" route, 9.30am start, details Tel: 825463/823716
- 19 Reeth Athletic Club AGM - 7.30pm - Memorial Hall
- Illustrated Talk - The Story of the Two Dales - A Brief History of Swale and Arkengarthdale by Lawrence Barker at 8pm in Fremington Sunday School Admission: Adults £1.50 Children 50p which includes coffee and biscuits. Proceeds to the Grinton Church Restoration Fund
- 21 Reeth Manse Open Day from 10am
- Guided Walk - Old Gang Mines and Mills - a three mile walk with Lawrence Barker, meet at Surrender Bridge at 2pm. Adults £1.50; Children 50p proceeds in aid of the Grinton Church Restoration Fund
- 23 Wine Party and Preview for Flower Festival at St Mary's Church, Muker
- 24 - 26 Flower Festival at St Mary's Church, Muker
- 24 - 26 Beer Festival at the Punch Bowl Wensleydale Agricultural Show at Moor Road, Leyburn

August

- 25 Car Boot Sale - Park Fields, Grinton 10am to 3pm - Car Boots £5 - Tel: 884370 in aid of the Dales Cricket Club.
 - Guided Walk - YDNP - Scenic Swaledale, meet at Reeth Bus Shelter at 1.30pm Adults £1.80 Children 70p
 - 26 Car Boot Sale - Langthwaite 10am to 1pm - Car Boots £5 - Tel: 884370 in aid of both Arkengarthdale Church's
 - Afternoon Teas & Home produce stalls from 3pm at Arkengarthdale School in aid of St. Mary's Church Arkengarthdale
 - Reeth Sports
 - Guided Walk - YDNP - Forces, Crackpots, & Gills, meet at the Farmers Arms Muker at 1.30pm. Adults £1.80 Children 70p
 - Illustrated Talk - The Landscape of the Dales - a Geologist's View with David McMahon at 8pm in Fremington Sunday School. Admission: Adults £1.50: Children 50p which includes coffee and biscuits. Proceeds in aid of the Grinton Church Restoration Fund.
 - 27 Guided Walk - YDNP - The Story of the Rocks of Gunnerside Gill, meet at Gunnerside Institute at 1.30pm. Adults £1.80 Children 80p
 - 28 REETH SHOW & SHOW NIGHT DANCE
 - 29 Reeth Parish Council Meeting - 7pm
- ## September
- 1 Guided Walk - Leadmining near Keld - a 3 mile walk with Roger Pettican, meet at Keld at 2pm. Adults £1.50 Children 50p proceeds in aid of the Grinton Church Restoration Fund
 - 2 Guided Walk - YDNP - The Story of the Rocks of Beldi Hill & Swinnergill, meet in Keld at 2pm. Adults £1.80 Children 70p
 - Illustrated Talk - Up and Over Calver by Major FTC Williams at 8pm in Fremington Sunday School. Admission: Adults £1.50 Children 50p includes coffee and biscuits, Proceeds in aid of the Grinton Church Restoration Fund.

September

- 4 MUKER SHOW
- Guided Walk - Up and Over Calver - a 7 mile walk with Major FTC Williams, meet outside the Burgoyne Hotel at 11am. Adults £1.50; Children 50p proceeds in aid of the Grinton Church Restoration Fund.

ELITE CINEMA

Have you visited the Cinema recently??
The Elite at Leyburn is well worth a visit.
Their forthcoming programme includes:

August

1st 2nd & 3rd

2.30 & 5pm Muppet Treasure Island (U)
8pm only Secrets and Lies (15)

7th & 8th

5 and 8pm Trainspotting (18)

9th & 10th

5 and 8pm Golden Eye (12)

14th & 15th

5 and 8pm Smoke (15)

16th

5 & 7.30pm Babe (U)

17th

2.30, 5 & 7.30pm Babe (U)

21st to 24th

5 & 8pm Sense and Sensibility (U)

28th to 30th

5 & 8pm Mission Impossible (PG)

31st

5 & 8pm Mission Impossible (PG)

COMING SOON

29th September

7.30pm An Evening with Peter Seymour (Harpsichord) Yvonne Seymour (Soprano) - a delightful combination of music song and entertaining anecdotes - a welcome return visit by these renowned York-based musicians - tickets \$6.50

For full details Tel: 01969 624488

D. ALLINSON

ELECTRICAL CONTRACTOR

All types of electrical work undertaken
domestic & commercial, NICEIC approved

Willow Cottage, Reeth ☎ 01748 884343

**Arkengarthdale
RED LION INN**Free House • Real Ales
Bar Snacks available at lunchtimes all year round

☎ 01748 884218

REETH GARAGE LTD*A Dealer You Can Depend On!*

☎ 01748 884243

ARKENGARTHDALE ROAD REETH RICHMOND DL11 6QT

THE BOTTOM SHOP of REETH

Elsie & William welcome you to their General Store & News Agency open seven days a week

GROCERIES LOCAL PRODUCE FROZEN FOODS ICE CREAM

HOME COOKED HAM CARDS & Much Much More....

Elsie & William Whitehead, Oakworth House, Reeth, Swaledale DL11 6TW (01748 884552)

STEPHEN STUBBS

ELECTRICAL CONTRACTOR

Rewires, Showers,
Security Lighting/Alarms,
Immersion Night Store
Heating, Extra Sockets/Lights**REETH POST OFFICE SHOP**For one of the **best selections** of Greetings Cards
also supplier of Books, Maps and Stationery

Now open all day Monday - Saturday

☎ 01748 884201

SPECIAL OFFER**8.5kW ELECTRICAL
SHOWER**supplied & installed including
all necessary wiring & plumbing
From £284 + VAT

Tel. & Fax 01748 884686

FREE ESTIMATES

20 years experience

NICEIC Approved

**Muker Village Store
& Tea Shop**

Muker, Upper Swaledale

There's so much more in Muker

More Swaledale Heather Honey More Local Cheeses**More Information More Maps & Guide Books**

Village Store OPEN 7 Days a Week

More Tea & Coffee More Home made cakes**More Hot Meals all Day**

Tea Shop CLOSED Thursdays

Gwen & David May ☎ 01748 886409**M. GUY • PLUMBING**For all your
plumbing requirements
21 Laburnum Grove
Richmond

☎ 01748 825640

J.E.HIRD

MOBILE BUTCHER

Prime quality fresh & cooked meat
groceries. Weekly local visits
& Reeth Friday Market**CLOCK
WORKS**Clocks Repaired, Cleaned
Serviced & Restored
For prompt attention call

Ian Whitworth

☎ 01748 884203

THERE IS ONLY ONE**WHITE HOUSE**

ANVIL SQUARE REETH

01748 884763

Iss