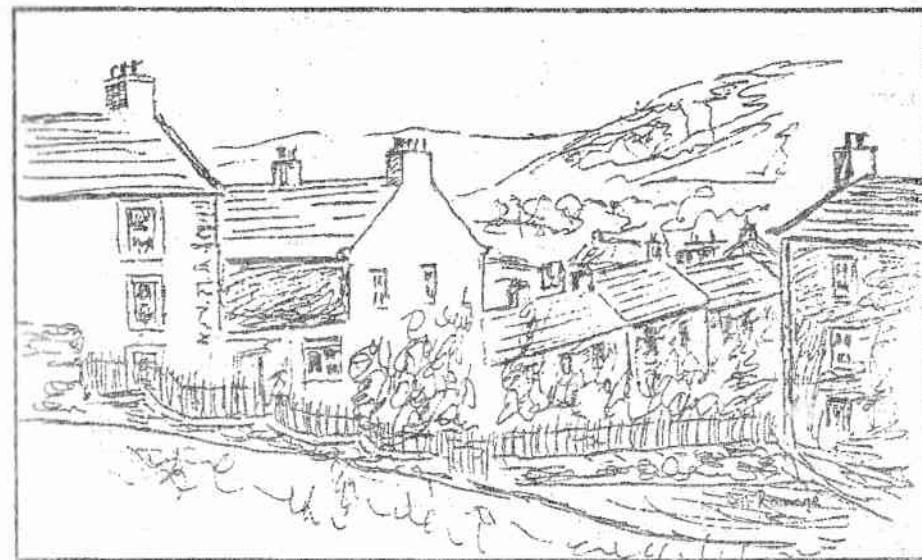


# REETH & DISTRICT GAZETTE

Issue N°6

January 1996

A Happy Healthy & Prosperous New Year  
to all our Readers & Supporters



## In this month's issue

Topical Cartoons

The Parish Council Report

Business Association Report

Local News

Quizzes & Competitions

Features

and much more

## BUSINESS ASSOCIATION MEETING

The Guest Speaker at the December Meeting of the Upper Swaledale and Arkengarthdale Business Association was Pam Whittaker the Tourism Officer for Richmondshire District Council who was able to talk positively on the progress of the Dales Tourism Forum and listen to local concerns. Tourism has become essential to the economy of the Dale and therefore we need to advertise our facilities. The meeting fortunately coincided with the release of the 1996 "Yorkshire Dales Holiday Guide" as published by Richmondshire Council. The 1996 Guide for the first time includes the "Where to stay Guide" and details many local places offering accommodation from Hotel, Bed and Breakfast to Self Catering. The Guide was received as a marked improvement but there are now major concerns that it may be the last time that many local businesses may be able to advertise in such a Guide.

The Dales Tourism Forum has suggested a link with the Richmondshire, Craven and South Lakeland Councils to produce one brochure/Guide supported by the National Park for the whole of the Yorkshire Dales thus enabling better marketing of the Yorkshire Dales both Nationally and Internationally. There is a proposal that only "inspected" premises will be able to advertise in such a Guide. This proposal, if adopted could prove very expensive for the many small and independent businesses offering a vast range of accommodation. The schemes which such businesses would have to join would be either the Tourist Board Key or Crown schemes or the AA or RAC

star schemes. Ironically recent Business Advice offered to new Businesses under a Business advice scheme operated by the Yorkshire and Humberside Tourist Board suggests that membership of such schemes is not necessarily viable for the small independent operator. However there are some major benefits by combining the budgets of the respective Councils which should give better promotion for the Dales as a whole and offer improved booking systems. Locally it would appear that yet again we would be overshadowed and become the forgotten Dales. Too many of the Tourist promotions for the Dales feature facilities in Wensleydale and Wharfedale at the expense of the serenity and beauty of Swaledale and Arkengarthdale. Once again the subject of actually getting the visitor to support and use local businesses becomes a problem. Reeth has recently lost yet another shop because trading reliant on the tourist trade is not viable. The day visitor and the walkers encouraged by the abundance of glossy brochures do not necessarily "spend" during their visit.

Therefore the Business Association is looking at publishing its own leaflet to promote both Swaledale and Arkengarthdale. Ms Whittaker suggests that because the visitor needs to "discover" this area they might actually be its strongest attribute. The main problem for publishing such a leaflet must be finance. Most local businesses could not afford the additional costs involved as many are already committed to advertising their respective businesses. Therefore sponsorship and certain grants are

being sought. The popular "On Route Guide" will be enhanced and hopefully an Exhibition will be staged in the Spring to coincide with its launch. Improved signing to Swaledale remains a suggestion as far too often it would appear that Richmond is the only place is Swaledale.



"OH WELL, THERE GOES OUR WALKING HOLIDAY!"

The possibility of a National Park Centre linking with a Tourist Information Centre could do much to "open up" the area but even that brings major concerns about the commercial aspects particularly as other Centres are selling many items; books, maps, etc. already sold by the few remaining local shops. It is the rules of the bureaucrats and their eternal strive to justify their own existence that remains the major threat to local businesses. The Local authorities should give more consideration to the needs of the local people and their businesses as they

seek new ideas to promote tourism for without them there would be no facilities for the tourist.

Ms Whittaker is keen to receive details of local events well in advance for inclusion in the 1996 Events Guide, and was thanked by the Chairman, Philip Bastow, for attending the meeting. The January Meeting will hopefully have Sarah Hudspith from the North Yorkshire Training and Enterprise Council as the Guest Speaker.

### RECIPE of the MONTH SAUSAGE AND PASTA BAKE (serves 4)

- 12oz Pork sausages
- 6oz Macaroni or pasta shapes
- 1/2oz Butter
- 4oz Sliced Mushrooms
- 7oz Tin of Sweetcorn
- 1oz Plain flour
- 2oz Red Cheddar or Red Leicester cheese

- Half a pint of milk
- 2tbs Fresh white breadcrumbs
- 2 Medium leeks washed and sliced
- 1 Medium tin of condensed Mushroom soup

1. Grill the sausages and place in an oven proof dish.
2. Cook the pasta according to the directions on the packet.
3. Melt the butter, add the mushrooms and leeks and cook until tender, add the sweetcorn at the end.
4. Blend the flour with the soup and milk. Bring to the boil stirring continuously add the veg and pasta.
5. Pour over the top of the sausages.
6. Sprinkle with cheese and breadcrumbs and heat through in a moderate oven.

## SWALE BRIDGE CLUB

The Bridge Club held its Christmas Party at the Bridge Hotel, Grinton. Twenty members enjoyed a delicious meal and then played cards. Everyone won a prize for something, and a good time was had by all. The Club meets every Monday afternoon at 1.30pm in the Fremington Sunday School. We play Duplicate Bridge. New members are most welcome.

## SWALEDALE LEADMINER BIRD

Further researches into the origins of the rare Swaledale Lead Miner bird have brought to light a curious sequence of events. It appears that this particular strain was brought by the Roman Legions when they penetrated as the Hurst area. The birds were at once at home in the Hurst mines where it is believed they eventually tunneled through to the Churt mines on Fremington Edge and upon meeting the underground Churt Miner Bird promptly mated and moved to their final nesting place at the Old Gang Mine above Low Row.

## LOW ROW CHRISTMAS DOMINO DRIVE

Prizewinners in the Low Row and Feetham Christmas Domino Drive were: F Steel; Lesley Hutchinson; G Tiplady; M Bell; D Calvert; H Petty; R Locky; R Guy; C Calvert; S Reynoldson; F Brennan and N Harker. Raffle winners were: A Petty; F Kendall; H Petty; B Sunter; O Anian; A Frankland; E Blackburn; I Reynoldson.

Proceeds were for the Institute. The next major function in the Institute is the Feetham Fools version of the pantomime "Snow White and the Seven Dwarfs" from January 18th to 20th - see feature for details.

## SCOTT TRAIL SUPPORTS LOCAL CHARITIES.

Proceeds from the 1995 Scott Trail were recently presented to local organisations and charities at a function at the Buck Hotel, Reeth. The total of £1350 included sponsorship monies raised by Matt Chambers of Leeds who completed the course on his Triumph Cub motorcycle. Cheques were presented by Ronain Bailey, Assistant Clerk of the Course; Ken Raw one of the Programme Editors and "Killer" Kendrew the Charities Coordinator to: Reeth; Arkengarthdale; Gunnerside and Ravensworth Schools; Swaledale Fell Rescue; Riding for the Disabled; Share Care; the Swaledale District Nurses Appeal Fund and the Darlington Play bus. Proceeds from the sale of the programmes and the Trail are traditionally presented to local organisations and charities and once again this presentation is a considerable achievement for the volunteers and the Richmond Motor Club who run this prestige Motor Cycle Trials Event. Or to put it in the words of the Club President, David Allinson, "Not bad for a bunch of motorcyclists!"

## PARCEL FORCE

Reeth Post Office has recently been designated an accepting post office for all Parcelforce National and International Guaranteed On-Time Delivery Services including Datapost; Parcelforce 24 and 48; International Datapost; and International Euro 48. It is hoped that this extension of services will be assistance to local businesses. Please call and ask for details.

Reeth Post Office is open 9am to 7.30pm Mon to Sat but closes for lunch 1pm to 2pm daily.

With all the holiday advertisements currently on television and in the press it is a timely reminder to advise that the Post Office also offers a Foreign Exchange Service and can even offer Holiday Insurance. Rural Post Offices remain under threat so the more you use them the more services they can offer, to quote their own advertising statement, "Use them or lose them."

## DESIGNS FOR EUROPE

Christian Hughes of Healaugh has been busy designing and producing all the sales material for the European launch of "Nu Skin" toiletries. He has designed and coordinated £250,000 worth of business plans, display books and postcards. The documents have had to be produced in German, French, Dutch and English and is the first time he has had to do anything for abroad. He is hoping that he can keep his involvement with EC Group the company behind the venture. The product became the fourth most popular brand in Japan within four years of its launch there and he is hoping for a slice of similar success in Europe.

## HEALAUGH TEA

The article on Healaugh Tea has raised considerable interest. We understand that the Tea carried on well into the eighties although latterly it was just a Supper and held in May. Many other memories and documents have been forthcoming and we will hopefully consolidate them for future articles.

## SWALEDALE MUSICAL SUCCESSES

At the recent Associated Board of the Royal School of Music examination held in the Richmond Centre the following successes were recorded:

Emma Lundberg: Grade 6 with Credit Clarinet. Rebecca Lundberg: Grade 7 with Distinction Trombone. Victoria Lundberg: Grade 5 with Credit French Horn and Grade 5 with Credit Alto Sax. Harriet Manning: Grade 7 with Credit Flute.

Congratulations to you all.

## SWALEDALE DISTRICT NURSES APPEAL FUND

At the time of going to Press the Fund stands at £1129.28 have been boosted with donations from the Concert at Low Row Church and the Scott Trail. A grand effort to date, thank you. The Nurses can now purchase some additional equipment and next month we will have a full report.



"BIG BROTHER IS WATCHING YOU JOHN.... WE KNOW ABOUT THE CHIP VAN!"

## WATER ON THE BRAIN

by Rev. Keith Jackson

What's all this about a Water Shortage in West Yorkshire?

For some weeks now fleets of road tankers have been travelling backwards and forwards along the M62 and up and down the A1 transporting millions of gallons of water per day from the lower reaches of the Yorkshire River Derwent, south east of York, and from the Northumbrian Water Company's Long Newton balancing reservoir near Stockton. This overall emergency operation is costing more than £2 million per week and the media, especially TV is full of hype, including repeated accusations of lack of competence on the part of the newly privatised Yorkshire Water Company in the handling of what is without doubt one of the driest single seasons (ie: Spring, Summer and Autumn - to date) drought periods on record for Yorkshire and Northumbria. Adding to the public tension and just as the Company's unprecedentedly massive tankering operation - hopefully to relieve threats of their imminent rota-cuts to Bradford and Calderdale areas - plus others, was gaining momentum, OffWat, the Government's water industry watchdog, announced that they were going to investigate three of the recently privatised Water Companies, including Yorkshire, on a range of issues including allegations of failure to meet appropriate standards of service to the consumer.

Also of interest, especially to those who have been involved in, or followed closely the recent history of water resource developments in this country is the fact that the "Times"

newspaper, on 15th November - the day following the start of the Dewsbury public inquiry on proposed rota cuts announced that a Government Minister for the Environment has stated publicly that "A pipeline linking Yorkshire with the abundant water supplies of North East England (ie: Kielder Reservoir, plus the Tyne Wear Tees Tunnel link) is to be built to stave off future shortages affecting millions of consumers."

Altogether a "Bonnie Hubbleschoo!!!" as they used to say in Swaledale!!! So many people and organisations are expressing views that we sometimes wonder who is in charge and who is supposed to be dealing with the problem.

The problem threatening public supplies in West Yorkshire is that the single season drought of 1995 may yet extend well into 1996, and repeat the tremendous tow season drought of 1975/76 which centred on the South West of England. This time it is the North of England that is being hit the worst. But people are asking "What about the so called Yorkshire Water Grid, why can't it cope?"

The Yorkshire Water Grid comprises essentially direct supply impounding reservoirs located in the Pennines, completed to limited extent with more recently developed major river water abstractions from the Yorkshire Rivers Derwent and Ouse. Because some of the West Yorkshire reservoirs are only 'single season' reservoirs (ie: they balance supply and demand over one season only as opposed to the conventional 3 dry year design period) they have neither the rainwater catchment nor the storage capacity to withstand longer than single season

drought periods - without the support from other sources.

What is the answer then? Yorkshire Water have announced that they are to spend something like £80 million - forthwith to provide additional pumps and pipelines to transfer more river water into West Yorkshire where supplies are most threatened - always provide of course the water is in the rivers and available for abstraction.

Fascinating isn't it? We shall watch developments with interest. After all we pay Yorkshire Water Rates and Charges and the Company is statutorily responsible for serving us Yorkshire people with water.

Will we see a properly planned solution to the problem, or, will interest in this subject fade as the drought is solved by the outset of more normal rainfall? We shall see.

By the way there is an answer to "Water on the Brain." - "A tap on the head!"



**Douglas Mairs & Sons**  
Established  
**1935**  
**COAL MERCHANTS**  
**WEST AUCKLAND**  
**Regular Deliveries**  
**Throughout the**  
**Dales Area**  
**Competitive Prices**  
Telephone  
01388 833616 or 832884

## A 'SWEET' COMPETITION

Every Christmas brings supplies of sweets and chocolates. As you munch your way through them here is a little quiz to see just how well you know the names of your favourite sweets and chocolates. Entries to the Post Office by 22 Jan please. A small prize will be given to the first correct answer drawn after that date by the Bottom Shop and just to keep you all sweet the answers will be published next month. Good munching!!

Example: Clue - Take a Break with us.  
Answer - Kit Kat

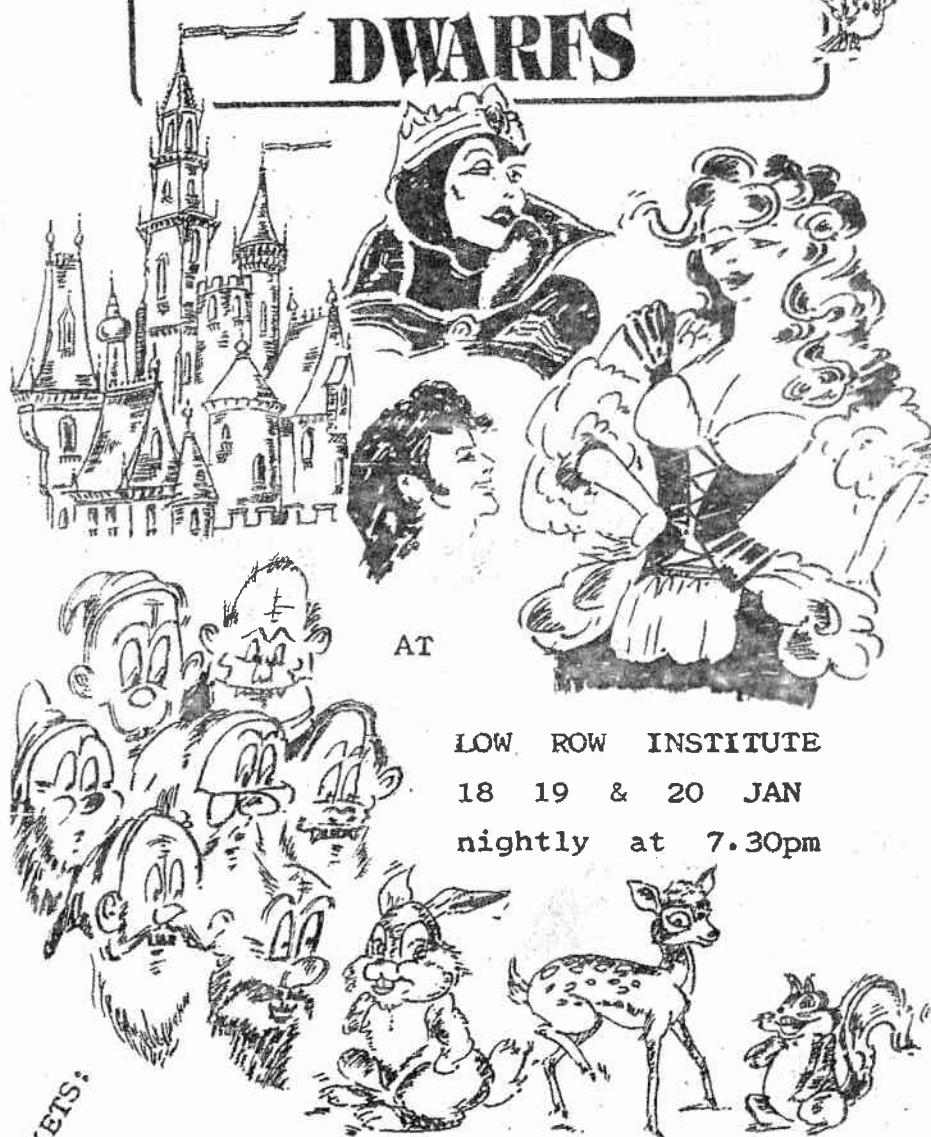
1. Infants that wobble about
2. Wise Guys - Know Alls
3. Where refined people live
4. Fruit falling down. Not by itself.
5. Sport for a Prince
6. Where 9, 10 & 11 come
7. Coat hanger with fastener
8. Made from grapes. In everyones mouth
9. 100% precious metal
10. Used in hockey. But this one is made of Granite
11. A Race of Endurance
12. A Royal producer of money (or herb)
13. Is this a road on the date form estate
14. They fall in winter but are not white
15. To move quickly around in a dance
16. Sweet pastry for afternoon tea (Yorkshire)
17. Used to quiten the never ending talker
18. Allsorts and kinds blended together in a tub
19. Not a member of a teachers union
20. Middle east country gives us ecstasy



**"FEETHAM FOOLS"**

PRODUCTION OF

# SNOW WHITE AND THE SEVEN DWARFS



AT

LOW ROW INSTITUTE  
18 19 & 20 JAN  
nightly at 7.30pm

TICKETS:

Tel: 886235 ( Day ) 886373 ( after 4pm )

## PANTOMIME

You've been warned. It is the Pantomime season but are you ready for the spectacular local production of "Snow White and the Seven Dwarfs" about to be given by the Feetham Fools in Low Row Institute on Thursday 18th, Friday 19th and Saturday 20th January at 7.30pm. A show not to be missed but hurry tickets are selling fast and are available from Mrs Ann Kilburn at Low Row Post Office between 9.30am and 4pm. Ann will be pleased to accept telephone bookings on 886235 or after 4pm on 886373. Ticket Prices compare exceedingly favourably with all major productions, especially those in London's West End:- Adults £2; Children 5 - 16 yrs £1 and children under 5 free.

A considerable amount of effort has been put into this production which is worthy of your support. Watch for the spectacular choreography and the music will be second to none so hurry along for an evening of funderfull entertainment.

## NEIGHBOURHOOD WATCH

We apologise that some of the details given in our last issue were not entirely correct. Full details of all local coordinators will be given in our next issue.

## MISSING PERSON?

Have you seen Fremington Freddie? He only comes out at certain times of the year but has been a frequent visitor for many a year. If you've seen him or know of his location please let us know.

## OBITUARY

During the Christmas period Swaledale and Arkengarthdale residents were saddened by the sudden death of Tommy Kendall who had lived most of his life in the Dale. Born in Darlington 83 years ago he moved with his mother and late sister Mary to Nettlebed near Crackpot when his father was called up for War Service and subsequently lost. On leaving school he worked for three of his farming uncles before going to Cringley Farm, Healaugh where he farmed for 36 years. On retiring in 1976 he did lots of walling and other odd jobs in the locality. A life long member and longest serving Trustee of Low Row and Feetham Literary Institute where he was regularly heard in many local concerts being the possessor of a fine tenor voice. Only the week before Christmas he had been a member of a party entertaining at the Riverdale, Bainbridge. The funeral service was held in Reeth Congregational Chapel by the Rev G A Hemming, followed by a private burial at Rev K Jackson at Grinton Cemetery.

Family mourners were: Mr F G Kendall, brother; Mrs T A Sunter, sister-in-law; Mr T A Sunter, brother and Mrs F G Kendall, sister-in-law were unable to attend; Mr & Mrs R Alderson, Mr & Mrs O J Kendall and Mr & Mrs G M Kendall, nephews and nieces; Mr A J Kendall and Mrs J Lundberg great nephew and niece; Messer M & W Alderson, Mr & Mrs H Petty, Mr & Mrs E Staveley and C Barningham, cousins. Bearers were: M Alderson, A Barningham, W H Harker, G Hird, A Kendall and D Staveley.

# PARISH COUNCIL

At the last Reeth Parish Council Meeting held on 6th December an update on the progress on the project for Healaugh Square was given. Highways have started kerbing. Yorkshire Water report the completion of repairs to the culvert but confirmation is still awaited on the additional funding sought by the National Parks who have already committed certain funds to the project. Dependent on the additional funding the work could be completed for the Spring.

Highways Matters concern was expressed over the reports of the reduction in localised gritting and ploughing following the redeployment of certain vehicles. Parishioners are urged to support the Parish Council by writing to County Highways and by writing to the local County Councillor, Dr Robert King at Hawes. The additional waiting restrictions are requested by the Parish Council have been approved and the zigzag markings have been placed in front of the Fire Station. The white "Keep Clear" markings in front of the Mews will be replaced but are proving effective.

Fireworks Display was a success and will be repeated. Over £900 was raised from fund raising and donations leaving a surplus of £313.

Street Lighting additional lighting around the Green to include Alpine Terrace, the entrance to the Mews, Anvil Square, between the Copper Kettle and the Congregational Church, the Old Manse Comer plus up to six

columns on the road side of the Green have been requested. If any reader has any photographs showing the location of the original gas light columns, particularly on the Green we would be very interested to borrow them - please leave at the Post Office. Work is progressing on the light on the Back Lane and further proposals are being made to hasten the additional light for High Fremington.

Daffodil bulbs have been planted around the Green by the Playgroup, Reeth School pupils and Cubs and Scouts.

Seat Various locations were considered for the location of another seat following a recent bequest. A location near to the Post Office is being considered. A local tender was accepted for seat repairs around the Parish.

Reeth Bridge a local contractor is being employed to trim the trees to improve visibility for road users at Reeth Bridge.

Policing in the Dale in view of certain problems and concerns about recent criminal activities other Parish Councils are to be invited to seek an open meeting with the local Division /Area Commanders to discuss policing issues in the Dale

National Parks with the impending changes to the membership of the National Parks Committee a meeting with other Parish Councils is to be sought.

Car Parking remains a problem but the Council have signed an agreement with the Rural Development

Commission for temporary use of their land to the rear of the Reeth Dales Workshops off Silver Street at weekends and Bank Holidays throughout the forthcoming season.

Market Recent bad weather has considerably reduced the number of stalls attending. However it was agreed to continue with the policy of a two moth free period for stall holders during January and February. The views of local traders are to be sought before consideration is given to holding additional Markets on Bank Holiday Mondays at Easter, Spring and Late Summer.



**R&S**  
DECORATORS

Domestic & Commercial  
Decorators

For a complete decorating service  
Contact Steve Holmes  
01748 823183

## LOCAL NEWS A CLEAN SCOOP !!

Following the tradition set by Dave Hardwick, Neville Boys of the Gift Shop entered three classes in the recent National Competition organised by the Ice Cream Alliance. He gained a Diploma for both Dairy and Coffee ice cream and a Diploma with Merit for Fruits of the Forest sorbet.

## REETH & DISTRICT ANGLING CLUB

The Club recently held their Annual Dinner and Presentation evening at the Buck Hotel. A good season had been enjoyed by the Club with a Club Record being made when Adam Hollingsworth caught a 2lb 9oz Brown Trout. Presentation of the Club's Trophies was made by the Club President Brian Sunter: Senior Trophy - Adam Hollingsworth; Ladies Trophy - Sylvia Berry; Junior Trophy - John Pybus; the "Hissing Sid" Trophy for the largest eel - Andrew Clarkson (Andrew was also presented with a landing net for catching both marked fish); the Fly Fishing Trophy was won jointly by the Chairman, Ralph Porter and Vice Chairman Willy McCleary. After the Dinner and presentations dancing was to the Silvershade Disco which went to make an excellent evening enjoyed by everyone.

## THANK YOU

To Dr. Bond and dear friends for your care and support during my recent recovery after the accident.  
Yvonne Howard, Low Row

## THE BIG FREEZE

Funny to think that only four months ago we were still enjoying a very warm summer. Winter has come with a vengeance and the recent cold spell has caused many problems especially with frozen pipes. Fortunately, for the time being we seem to have escaped the heavy snow falls and certain areas still haven't had the roads gritted like they used to be. County Highways were not too pleased with our little article in the December issue but that has not changed matters. North Yorkshire are not the only Highways Authority that appear to have been cutting back. Road conditions in Cumbria have been similar to ours thus making it difficult for people to get about. The very seasonal weather over Christmas certainly brought out the walkers and no doubt there will be some spectacular photographs of unusual ice formations especially of the river.

### QUIZ

P	E	I
R	C	A
E	L	F

See if you can make 70 words of four letters or more using each letter only once. The letters also make a nine letter word, what is it? Small prize for the first longest and complete entry drawn. Drop in your entry to the Post Office by 22nd of January.

Last months winner was  
Lorna Scott of Reeth

## NATIONAL PARK ANNUAL REPORT

Recently we received a copy of the Yorkshire Dales National Park Annual Report for 1994/95. This publication has been reviewed by the local press with certain issues such a planning and visitor facilities being especially scrutinised. One interesting chapter talks about woodland conservation and grants that are available so we will just have to watch developments regarding the issue of Booze Wood to see if the National Park Authority really does mean what it says.

We have no further information to date on the proposed Reeth Information Centre but progress is being made regarding the Healaugh Square project.

### PLAYGROUND

By now most readers will have seen the development of the Children's Playground in Reeth. At last, as reported in the local press, the Euro Grants have been released to enable all the works to be completed. Hopefully the sterling efforts that have been made to achieve this overdue facility will be appreciated thus ensuring that the amenity is not abused.

### TALKING OF STRANGE SIGHTINGS .....

Have you heard about the elephants seen at Maiden Castle? All may be revealed in our next issue. In the meantime perhaps the staff at the Low Row Incident Room may wish to investigate ..... !!



## Stef's



Reeth Dales Centre, Silver Street, Reeth

Choose from our large & exciting  
range of Animal Figures & Wall Plaques  
Ideal gifts for animal & countryside lovers

All designed & made in Swaledale

Free entry to see our expert team at work

Open Monday - Friday 9.15 - 4pm

☎ 01748 884498

### CHRISTMAS CONCERTS

During the run up to Christmas there were a number of excellent concerts featuring Reeth Brass Band, The Swaledale Parish Choir and the Swale Singers not forgetting the local School Plays. A busy time for many and all appreciated. Dozens of people braved the cold for the Carol Service around the Tree on Christmas Eve and the mince pies supplied by the Burgoyne Hotel were much appreciated.

## TIMES CHANGE

An extract from a letter from Thomas Raw, Agent of the A W Mine, Fremington to the owner Sir George Denys dated 14th December 1878:

"I am sorry to inform you that James Tiplady, while inspecting the valves of the machinery in the Engine House carelessly crossed one of the spur wheels, when the arm of the wheel caught his foot and cut off four of his toes. Yesterday he was doing as well as can be expected, he had no reason to cross the said wheel, as a good road up is provided. I am sorry that men are so careless."

Today for such an industrial accident there would be an investigation by Health and Safety and compensation demanded. Granted times were hard but in their own way were not workers and their families cared for? Do we take too much for granted today?



*Have you got a favourite hymn?*



You have? Or perhaps you have got several favourite hymns? Well, we would like to know about it (or them).

We thought that we would ask readers of the Reeth and District Gazette for their favourite hymns in January and February, so please write them on a piece of paper and give them to either Peter Brant at Reeth Post Office, or to Eleanor Reddington. We will then sort them out to find the TOP TEN favourite hymns in the Dales. Details will be published in a subsequent Gazette (but we're not saying which one, as it depends on how long it takes us to sort them out!). We thought we would then have a Songs of Praise to sing them, and this will be held on Saturday May 25th. at 7-30pm. We look forward to hearing from you.



Eleanor Reddington and Peter Brant.



## REETH A Biographical and Descriptive Sketch

Reeth, lovely *Reeth*, I love thee still,  
I love the *Beck*, I love the *Swale*,  
I'm also fond of every Hill  
Neath which Thou stands, - I love the Dale.

I hope in thee my last to breathe,  
In thee there's many a friend of mine:  
I love thine inmates, native *Reeth*,  
And I will *some* of them define:-

There's *Mr. Tennant*, at the Mill,  
As good a soul as need to be,  
And '*Squire Langhorn*, on the Hill,  
Though queer, there's few as good as He.

Good *Sarah Coates* lives up Reeth-Lane,  
A thrifty, worthy, pious woman,  
(Enjoying now her former gain,)  
Such constellations are not common.

There's *Atkinson*, sign of the Buck,  
And *Spensley*, (of the pious clan,)  
The Steward's Son, and *Mr. Cooke*,  
Afflicted, but a godly man.

There's *Galloway James*, a man in years,  
Of this world's goods has got enough,  
And draper *Coates*, who has no fears  
Of getting the like precious stuff.

There's *Dr. Close*, lives in the house  
Which was Miss Close's snug abode  
With herbs, roots, min'rals, earth' produce,  
Keeps folks from going "th' left-hand road."

But where is *Mr. Barker* gone?  
'Tis here he used to make his Collars,  
And Saddles, that gigantic man,  
Has left his tools, to count his Dollars!

There's gallant *Captain Harland* too,  
And *Major John of Langhorns'* House,  
As there's no French-man to pursue,  
They chace and shoot, for pies, fat Grouse.

There's *Thomas Savers* - and his shop,  
Which I may fitly call the 'Change,  
Where idle folks so often pop,  
The affairs of Nations to arrange.

There's *Thwaites*, at Shoulder of a Sheep,  
And *Pally*, too, with jolly charms,  
So fat that they can scarcely peep,  
But happy in each other's arms.

There's *Harker*, come from up the Dale,  
*Mc. Collah*, worthy gentleman,  
And *Joplin*, famous for good Ale -  
I skip the House of *Alderson*:-

Skip, did I say, the *ancient house*  
Of *Alderson*, in Reeth so famed,  
Such negligence would be abuse,  
And all abuse is justly blamed.

My youthful days, I well remember,  
The *Aldersons* and *Langhorns'* - dead,  
*Red Tom's* "Yeho-Voes," in bleak November,  
Reeth's famous hounds by "Crownner" led.

There's also *Mrs. Alderson*,  
(Beyond the house for famous Ale,)  
Who bore for Dr. Robinson,  
The brightest gem in all the Dale.

And must I pass the *Chapel* o'er,  
Because its Ministers are gone?  
No, though its Clock will strike no more,  
Its Vane and Ball have tumbled down,

It stands a monument of grace,  
A monument of God's decree,  
Though none fill it, it fills its place,  
And worships God, most silently.

"Church-men may sneer, Wesleyan's laugh,  
"At us for preaching up the Fates,  
"All is decreed, they are the chaff,  
"The elect are we, they reprobates."

But to resume biography,  
There's *Simon Peacock*, too, *Esquire*,  
He knows this world's philosophy,  
Yet he must die as did his sire;

But when he find his strength to fail,  
And wants his youth again renew'd,  
Then let him quaff *October Ale*,  
Which he in "eighteen-hundred" brew'd.

*James Peacock*, servant of the Lord,  
That saint of God, man of renown,  
Were I to pass without a word,  
I should be blamed by *all* the town.

Silently I have pass'd *that* door,  
Because both *James* and *Mally's* dead,  
If I speak not, Reeth stones would pour,  
Their execrations on my head.

Shall *Dr. Robinson* escape,  
Because he lives at Cogden-Hall;  
May choicest blessings on him heap,  
For he is worthy of them *all*.

*Laird Whitelock*, too, I'm bound to mention,  
A loyal man to Church and State,  
And it may be 'tis his intention,  
To live on "Sir John Swale's" estate.

'*Squire Hutton*, too, I ought to name,  
One of the richest in the Dale,  
High-Sheriff, and of banking fame,  
Such banks as his will never fail.

'Tween Marsk and Reeth, just on a ridge,  
(Which house the "Hagg" we used to call,)  
Lives th' Engineer - then throw a bridge,  
Across from thence to Cogden Hall.

"To spring an Arch of such a span,"  
(The Engineer will quick reply,)  
"Is quite impossible to man," -  
Why, then *suspend* it from the sky.

You may, Sir, *mentally* create,  
A bridge of *diamonds*, if you will,  
You then can Cart across your Slate,  
And Ore bring back to Marrick-Mill.

And then there's Justice Morley's Ore,  
Should cross untoll'd the *Grand Suspension*,  
'*Squire Whitelock's* Scots, - the Doctor's Store,  
And perhaps myself, tis' my intention.

*John Hutchinson*, I too must name,  
An aged, worthy, godly man,  
And *Mr. Stubbs*, of pious fame,  
Did, does good, will, where'er he can.

In passing by a host of friends,  
I come to *Thomas Coates and Ann*,  
He's queer, but shrewd, and shrewdness  
tends  
To make men queer, deny't who can.

'Tis hardly fair that I should pass  
The *Meeting-House* without a word,  
Where \_\_ary heads, and lad and lass,  
In crowds repair to seek the Lord.

(There's one thing greatly in its favour,  
'Tis cleaner far inside than out,  
'Tis not, as said our blessed Saviour,  
"Rott'ness within and clean without.")

"Is Jesus found there?" (some will say,)  
"To seek and find are different things,"  
Seek diligently night and day  
"And ye *shall* find," saith th' King of Kings.

But *Nichodemus* will reply,  
"All must to yonder *Church* repair;  
"For none *shall* find the Lord Most High,  
"In *any* place excepting *there*."

"We are the Salt, Sirs, of the earth,  
"All other salt has lost its Saviour;  
"We do without a *second* birth,  
"And *we* can do without a Saviour.

"We all were *once* born in our lives,  
"And *once* we think is quite enough,  
"For none but Wesleyans, and old Wives,  
"Would preach about such *foolish stuff*."

The "*Stern Dissenter*," quick replies,  
"Cooke's Chapel is the place for me!  
"Whence graciously are heard the cries  
"Of God's Elect, by God's decree."

"For though your Priest came from the  
College,  
"And had a learned education,  
"He's void of *Calvanistic* knowledge,  
"The glorious theme of reprobation."

Thus both are heated, both are vext,  
And little show the fruits of grace,  
While neither of them brings a text,  
To prove there's *truth* in either case.



Just at this crisis comes a man,  
Of plain attire, and steady pace,  
Who said, (for he's a Wesleyan,)  
"God may be found in any place:

"Where-ever two or three agree,  
"To ask for grace in Jesus' name,  
"It makes no difference, there is He,  
"Church, ' House, or Chapel, 'tis the same."

Then *Townsmen* let us all unite,  
In love, and helping one another,  
Let's prey to GOD with all our might,  
And each love each, as his own brother.

ABEDNEGO.

*Reeth, May 18th. 1826*

Subscribed by Mrs. M. Winkfield  
of Langthwaite

### COMMENT

Firstly a Happy and Prosperous New Year to all our Readers. With this our sixth issue we are satisfied for the future of this publication. Hopefully in time we will be able to attract additional funding, possibly Grant Aid, to purchase certain printing equipment and improve publication quality. We are able to develop the content. Following from the success of a picture on the front page of the Christmas Issue we hope continue with that format and will be pleased to consider any local sketches, etc from local artists. Regular features are now appearing with contributions coming from a variety of sources. Competitions, recipes, "Bygone Days" are all such features which keep the publication interesting. The Cartoons are very popular and when an issue appears it is very much a community effort.

The Press at this time of year is full of predictions for the forthcoming year and adverts for holidays. Local businesses will continue to struggle and can never be entirely reliant on the tourist trade. It is all too easy travel to and shop in the big shopping centres but are the prices at those places really competitive. Local shops need to be supported. Budget restrictions will continue to a problem for Local Authorities and reduction in services will be inevitable but that does not mean that we should just accept them. Well researched and constructed letters to those authorities can have the desired effect but letters should not only be sent on matters of complaint.

The tourist trade is now and essential part of the local economy but in catering for the tourist the needs of the resident must never be overshadowed. Sometimes, especially with planning decisions one wonders if the Dales are for the local people to be able to live and work or just be a working museum for the tourist. What is clear is for all to work in partnership.

Efforts are being made to open a Youth Club and hopefully the young people will benefit from it. Despite certain recent annoyances we are very fortunate with our young people and those same persons at the root of those annoyances did prevent at least one burglary through their observations and community spirited actions.

Looking forward to the forthcoming season events such as the Swaledale Marathon, Tan Hill Sheep Show, Swaledale Festival and Reeth Show will once again soon be here. Much

work behind the scenes is necessary for all such events and it is especially pleasing to record efforts like the Scott Trail and their recent presentations to local schools and Charities.

The organisers of the Swaledale Festival are still keen to hear of any event that can be linked to the Festival or even new ideas. Such events/suggestions like the Top Ten Hymns are what is needed to bring the Festival back to the heart of Swaledale. As that festival has developed over the past few years and extended into other Dales we aware that it is questionable that the Festival could be renamed the "Richmondshire" Festival. Such a consideration would very much be against the need to adequately promote this area for far too often we are overshadowed by developments at Richmond and in the other Dales. The efforts of the Business Association to promote this area can be applauded provided they are for the benefit of the whole area and not certain individuals.

1996 promises to be an interesting and challenging year which we can hopefully, with your support and contributions, favourably record.

Our deadline is the fourth Monday of every month but, please, it is helpful to have any articles, letters, etc much sooner just drop them into the Post Office.

*Peter Brant*

### Robert Ballard

Desktop Publishing & Document

Laminating

Telephone 01748 884886

Fax 01748 884571

### MARKET PLACE

For Sale, Jacob Skin Rugs - excellent selection - Tel. 884572

Logs & Free Ranges Eggs - Tel. 884380

Need a job doing?? most types considered - ring Derek on Tel. 884590

Puppies For Sale - Black Labrador puppies, K. C. registered. Many F. T. Ch in pedigree. Good working dogs or family pets. Ready in February. Tel. 884740.

Upright iron frame "Challen" piano - free to anyone willing to remove - needs tuning Tel. 884319.

### More brain teasers!

EXAMPLE: 16 = O in a P

Answer: 16 = Ounces in a Pound

- 1 12 = Z in a B
- 2 88 = TFL
- 3 45 = S at W a RR
- 4 186,000 = MPS (S of L)
- 5 9 = P in the SS
- 6 1912 = S of the T
- 7 70 = TSY and T
- 8 240 = OP in a P
- 9 4 = H of the A
- 10 7 = D in SW
- 11 2 = S in a P
- 12 39 = B in the OT
- 13 999 = OL than a T
- 14 3 = W on my W
- 15 6 = G (K of E)
- 16 7 = W of the W
- 17 40 = D and N of the GF
- 18 18 = H on a GC
- 19 192 = DE
- 20 10 = DS

## Community Education Courses in our area

### Monday

#### German

Conversational and Holiday German for the beginner.

A 10 weeks commencing Monday 29th January 1.30 to 3.30pm in the Reeth Methodist Schoolroom.  
Cost £33 (£16 Concessionary)

### Tuesday

#### English Literature

Books, plays & poems for pleasure.

A 10 week course commencing 16th January, 7.30 to 9.30pm in the Gunnerside Institute.  
Cost £33 (£16 Concessionary)

### Wednesday

#### Spinning & Weaving

Weaving techniques, braid weaving, spinning, dying, felt making, design.

A 5 week course commencing 17th January 10am to 2pm in the Reeth Methodist Schoolroom.  
Cost £33 (£16 Concessionary)

### Thursday

#### Art

Informal and relaxed classes tailored to suit individual requirements.

A 10 weeks commencing 11th January 1.30 to 3.30pm in the Reeth Methodist Schoolroom.  
Cost £33 (£16 Concessionary)

Please enrol at the first meeting.

For further information please contact Anne Frizzell, the Community Education Administrator, Tel. 850171

## REETH W.E.A.

Reeth W.E.A. starts a course on "Women in Art" on Wednesday, 7th February at Reeth School from 7.30pm until 9.30pm. The Tutor is Elisabeth Sutherland, who will give a series of six sessions, looking at the work of various women artists from 1500 to the present day. We shall discuss, for example: the Impressionist; Berthe Morisot; the Glasgow girls; the German Expressionists; and a range of women artists since the Second World War.

Please enrol at the first meeting.

Any queries, please ring the Secretary on 884279

## THE BURGOYNE HOTEL

On The Green Reeth  
Richmond North Yorkshire

DL11 6SN

Telephone & Fax

01748 884292

## Applegarth Designs

Wedding Dresses Ballgowns  
Dressmaking and Alterations

Miss R.J. Atkinson  
East Applegarth Farm  
Westfields Richmond

Telephone: 01748 822940

## DIARY DATES

### January

- 9 Business Assoc Meeting at the Black Bull Reeth, 8pm Guest Speaker - Sarah Hudspith from NYTEC.
- Bingo evenings at the Kings Arms, Reeth and every Tuesday evening 8.30pm for 9pm
- 10 Youth Club Steering Group meeting 7.30pm in the Memorial Hall
- 11 Melbecks Society - 7.15pm at the Institute Low Row, Guest Speaker: Doug Bradbrook, the well known local Nurseryman. Everyone is welcome
- 17 Reeth & District Youth Club opens, every Wed. 7pm to 9pm in the Memorial Hall
- 18 18th to 20th - Pantomime - "Snow White and the Seven Dwarfs" Low Row and Feetham Institute - see feature for full details
- 22 Parish Council Meeting - 7pm in the Memorial Hall
- 30 Benefits Agency Bus on Reeth Green from 2pm to 3.30pm

DEADLINE FOR ITEMS FOR  
OUR NEXT ISSUE IS:

**22 JAN**

### Elite Cinema, Leyburn

Have you visited the Cinema recently? The Elite at Leyburn is well worth a visit. Their forthcoming programme includes:

11, 12 & 13

5pm & 8pm Crimson Tide (15)

18 & 19

5pm & 8pm To Die For (15)

20

7pm Funny Bones (15)

NB after the screening there will be a live appearance on stage by Freddie "Parrot Face" Davies one of the Stars of the film.

24

8pm Live Concert, Steve Phillips, of the Notting Hillbillies, plays Blues & Folk

25, 26 & 27

5pm & 8pm Il Postino (The Postman) (U)

Feb 1, 2 & 3

5pm & 8pm Goldeneye (12)

8 & 9

Live Panto - from the Hunton Extremely Amateur Dramatic Society

For full details Tel: 01969 624488



*Visiting Australian V.I.P.'s cause confusion  
at local inn -*

# CABINET MAKER of REETH Philip Bastow

Invites you to visit & browse around his  
**SHOWROOM & WORKSHOP**  
Open 9-5pm Monday-Friday  
9-12 noon Saturday

**CRAFTS of SWALEDALE**  
Wood Pottery Woolens & lots more  
all made in Swaledale

The Workshop Back Lane Reeth 01748 884555

# Arkengarthdale RED LION INN

Free House • Real Ales  
Bar Snacks available at lunchtimes all year round  
☎ 01748 884218

# D. ALLINSON

**ELECTRICAL CONTRACTOR**

All types of electrical work undertaken  
domestic & commercial, NICEIC approved  
Willow Cottage, Reeth ☎ 01748 8844343

POST  
OFFICE

REETH POST OFFICE

Now open all day Monday - Saturday

# REETH POST OFFICE SHOP

For one of the best selections of Greetings Cards  
also supplier of Books, Maps and Stationery  
Now open all day Monday - Saturday  
☎ 01748 884201

# THE BOTTOM SHOP of REETH

Elsie & William welcome you to their General Store & News Agency open seven days a week  
**GROCERIES LOCAL PRODUCE FROZEN FOODS ICE CREAM**  
**HOME COOKED HAM CARDS & Much Much More....**  
Elsie & William Whitehead, Oakworth House, Reeth, Swaledale DL11 6TW (01748 884552)

# STEPHEN STUBBS ELECTRICAL CONTRACTOR

Rewires, Showers, Sockets  
Security lights/alarms etc.

# WINTER OFFER

**3 SLIMLINE  
STORAGE HEATERS**  
fined from £835 + VAT

Tel. & Fax 01748 884636

**FREE ESTIMATES**  
20 years experience

# NORMAN F. BROWN

Chartered Surveyors Auctioneers Valuers Estate Agents

We have a wide range of properties for sale in Swaledale and the  
surrounding areas. Specialist Letting Department.  
RICS Homebuyers Surveys, Valuations for all purposes.  
Agents for The Northern Rock Building Society.

# Offices

14 Queens Road, Richmond, N. Yorks. DL10 4AG 01748 822473

6 Bridge Street Bedale, N. Yorks. DL8 2AD 01677 42282

25 Market Place, Leyburn, N. Yorks. DL8 5AS 01969 622194

# SECONDHAND BOOKS

Bought & Sold at the  
**BOOKSTALL**  
Friday Market Reeth  
or Telephone Tony Pelton  
01748 818703

Paperbacks, Hardbacks, Maps,  
Music, Older Magazines  
Anything Printed!  
Bought & Sold

# J.E.HIRD

**MOBILE BUTCHER**

Prime quality fresh & cooked meat  
groceries. Weekly local visits  
& Reeth Friday Market

# M. GUY • PLUMBING

For all your  
plumbing requirements  
21 Laburnum Grove  
Richmond  
☎ 01748 825640



**CLOCK  
WORKS**

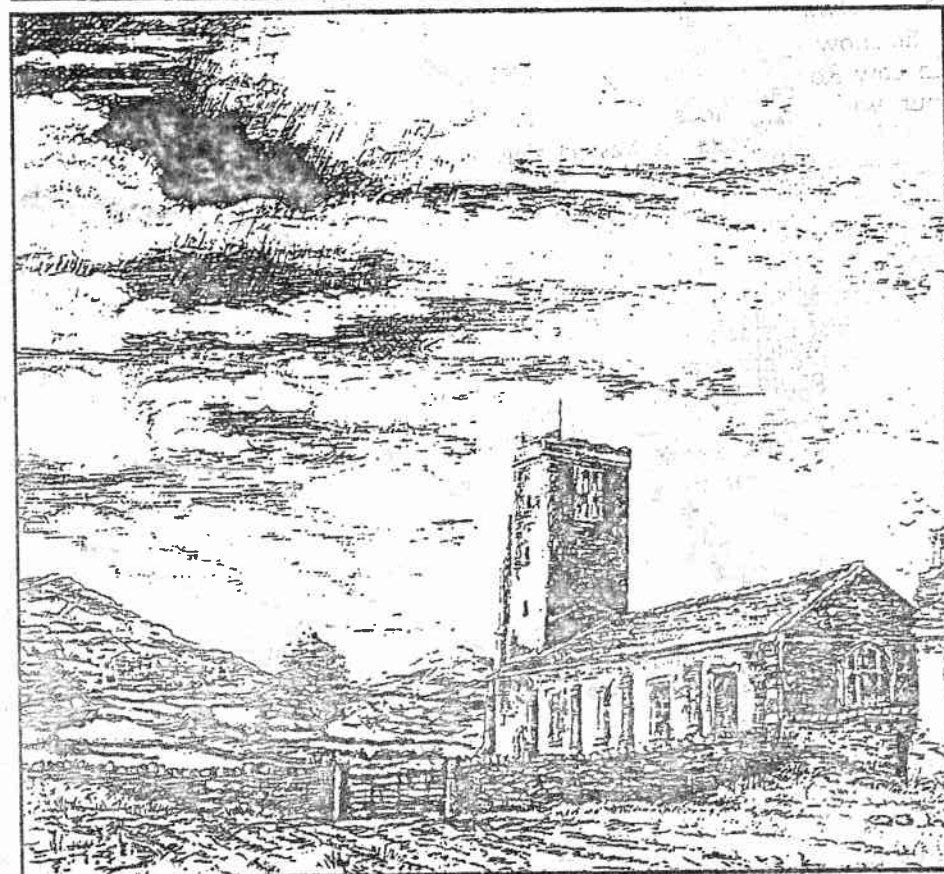
Clocks Repaired, Cleaned  
Serviced & Restored  
For prompt attention call  
Ian Whitworth  
☎ 01748 884203

# REETH & DISTRICT GAZETTE

Issue N°7

February 1996

Published 5th February 1996



In this month's issue

Booze Wood

'Weekenders'

Local news • The Parish Council Report  
Swaledale Festival • Quizzes & Competitions  
Cartoons and many other features