

THE BOTTOM SHOP of REETH

General Store & Newsagency open seven days a week

GROCERIES LOCAL PRODUCE FROZEN FOODS ICE CREAM CARDS

HOME COOKED HAM - VIDEO RENTAL now available & much more...

Contact Elsie & William Whitehead on 01748 884552

STEPHEN STUBBS

ELECTRICAL CONTRACTOR

Rewires, Extractors
Security Lighting/Alarms
Showers, Storage Heaters
House Inspections etc...

Tel: 01748 884686

Fax: 01748 884139

FREE ESTIMATES



CLOCK WORKS

Clocks & Barometers
Repaired, Cleaned,
Serviced & Restored

Ian Whitworth

Reeth Dales Centre
Reeth Swaledale
Nr. Yorkshire DL11 6SP
☎ 01748 884088

Member of The British Watch & Clock Makers Guild

Arkengarthdale RED LION INN

Free House • Real Ales
Bar Meals & Snacks available all year round

☎ 01748 884218

DAVID E. LLOYD

Chartered Builders

New Building - Restoration
Alterations - Extensions

Construction - Maintenance & Repairs

The Gables, Healaugh, Richmond DL11 6TZ 01748 884315

NORMAN F. BROWN

Chartered Surveyors Auctioneers Valuers Estate Agents

Over 30 years experience of selling property in Swaledale.
Large database of applicants. Free valuation without obligation
RICS Homebuyers Surveys

Offices

14 Queens Road, Richmond N. Yorks. DL10 4AG 01748 822473

6 Bridge Street, Bedale N. Yorks. DL8 2AD 01677 422282

25 Market Place, Leyburn N. Yorks. DL8 5AS 01969 622194

REETH POST OFFICE & SHOP

Bookseller - Stationers - Greetings Cards

Open all day Monday - Saturday 9am to 5:30pm

plus Sundays - 10am to 5:30pm

Telephone & Fax 01748 884201

"More than just a Post Office"

THERE IS ONLY ONE

WHITE HOUSE

ANVIL SQUARE REETH

01748 884763

J.E.HIRD

MOBILE BUTCHER

Prime quality fresh & cooked meat
groceries. Weekly local visits
& Reeth Friday Market

017683 71709

M. GUY • PLUMBING

For all your
plumbing requirements
21 Laburnum Grove
Richmond

☎ 01748 825640

TREVOR J HIRD

ELECTRICAL CONTRACTOR

No job too small • **FREE** estimates
Reduced rates for senior citizens

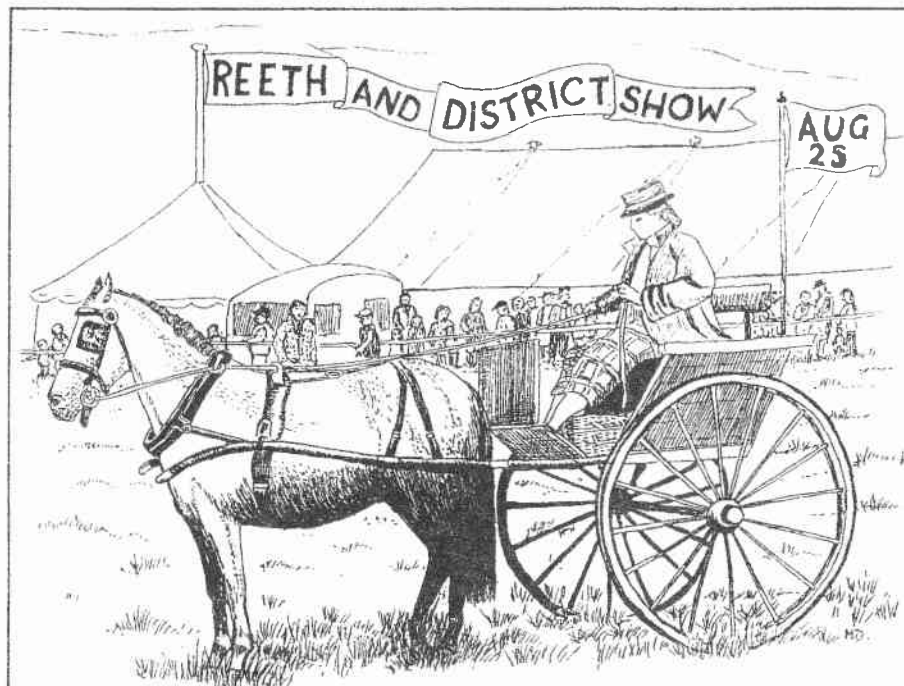
Telephone: 886886

REETH & DISTRICT GAZETTE

Issue N°49

AUGUST 1999

Published 1st August 1999



Show Time!

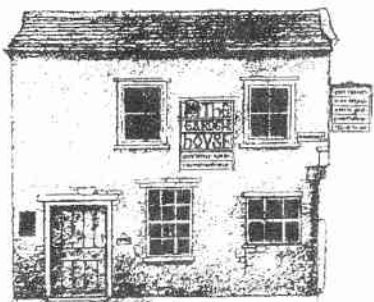
REETH SHOW - WED. 25TH AUG.

Wensleydale Show - Sat 28th Aug.

MUKER SHOW - WED. 1ST SEPT.

Marrick Show rescheduled for Sun 12th Sept.

The Local News Magazine for Swaledale & Arkengarthdale



"THE GARDEN HOUSE"

Anvil Square Reeth

We have pots for the garden and conservatory, patchwork, kitchenware, wood, wool and flowers.

Come and browse

also



GARDEN HOUSE POTTERY

Group visits to the workshop
by arrangement

01748 884188

HILLTOP FARM ARKENGARTHDALE

Large holiday cottage, high on the fellside
with wonderful views.

Central heating, 2 sitting rooms
2 bathrooms, boot & shower/drying room.
Sleeps 10 - ideal for large family groups.

Wilf Bishop

1 School Lane, Kings Ripton, Huntingdon
Cambridgeshire PE17 2NL

Telephone: 01487 773328

E-Mail: wilfbishop@msn.com

WEIGHILL'S GARAGE

Proprietor: Steve Simpson

Reeth Richmond DL11 6TS

01748 884245

MOT - Servicing - Repairs
Tyres - Exhausts - Batteries

Your local dealer for

MUL-T-LOCK

**The Ultimate Physical
Vehicle Immobiliser**

HIGH GREEN BOOKS of CATTERICK

Reeth Market - Fridays

Secondhand Books Bought & Sold

Telephone - Tony Pelton

01748 818703

ROBERT STONES BOBCAT & MINI EXCAVATOR HIRE

WITH OR WITHOUT
OPERATOR



ALSO: 4 WD TRACTOR &
10 TON TRAILER

Pepper Hall Arkengarthdale

Richmond North Yorkshire DL11 6EH

01748 884360 or 884718

Mobile 0421 605700

LOTTERY GRANTS FOR LOCAL GROUPS

Millennium Festival Awards for All

For an application Pack ring:

0845 600 20 40

REETH SCHOOL TRUST

Applications are invited for grants towards higher education from those under the age of 25 years whose parents are permanently resident in Swaledale, (west of the Borough of Richmond) or in Arkengarthdale. Application forms are available from Mrs A.J. Lockett, 7 Hartland Road, Darlington, DL3 8EY (Tel: 01325 464785). Please send S.A.E. and should be returned by Monday September 13th

THE CHARLES ALDERSON TRUST

The above Trust was established for the purpose of relieving, in cases of need, persons resident in the former Rural District of Reeth - the parishes of Arkengarthdale, Ellerton Abbey, Fremington, Grinton, Marrick, Melbecks, Muker and Reeth - who are sick, convalescent, disabled, handicapped or infirm, by providing or paying for items, services or facilities which are calculated to alleviate the suffering or assist the recovery of such persons in such cases, but which are not readily available to them from other sources. Applications for assistance should be made in writing to the Clerk of the Trust: Mr. A.L. Vickers, 23 Linden Avenue, Darlington, DL3 8PS

New Group

Do you look after a child with an on-going health condition or Special Needs?

Would you like to talk to other parents in a similar situation?

Are you interested in starting and building up a new support group for Carers of children with Special Needs?

Would you like to meet other Carers, gain friendship, help and support, have 'space' to express feelings or needs?

Meetings to be friendly and open.

If you are interested and would like to talk over any ideas with someone else, please contact Shelia Scofield or Michael Rasul at Hambleton and Richmondshire Carers Association on 01609 780872

REETH & DISTRICT GAZETTE

AUGUST 1999 Issue:

Reeth Two Day Motor Cycle Trial

"It's a Doc's Life" "Kemp's Jig"

Walking with the Major

"Frogmore's Silly Question"

Letters, Diary Dates, Church Services

Market Place, Bus Timetable

Local News and Parish Council Reports

This months contributors include:

Gillian Bobbett, Dr Paul Bond, David Williams, Peter Brant, Matthew Frankland, Eddie Farmer, Chris Jordan, Paul Terry, Reeth School, Audrey Jagger, Elizabeth Sutherland, YDNP, and Richard Birks.

The Gazette is printed and published by volunteers and distributed locally free of charge. Visitors to the area who enjoy the publication are invited to contribute to local good causes.

An Annual Subscription facility is available to readers from outside the Two Dales.

REETH & DISTRICT GAZETTE

No material may be reproduced in whole or in part without permission. Whilst every effort is taken, the publishers cannot be held legally responsible for any errors in Articles, Listings or Advertisements.

Printed and Published by the Reeth & District Gazette c/o The Post Office, Reeth, DL11 6SE

Tel & Fax: 01748 884201

LETTERS

We welcome letters on all subjects which should be addressed to the Editor, Reeth & District Gazette, c/o The Post Office, Reeth, DL11 6SE. Correspondents should include their full name and address

Cover Picture

by Marjorie Daniels

DEADLINE DATE for September Issue:

Monday 23rd August

Dovetail

*Antiques & Ethnic Crafts
from around the World*

ANTIQUE PINE & OAK

**KITCHEN & GARDEN
ARTIFACTS**

**Made to Measure
Re-Claimed PINE
& OAK Furniture**

Gallery & Original Gifts

**5% DISCOUNT
with this ad**

Why Travel MILES
were on your Doorstep

2 Bridge St, Bedale
01677 426464

Free Swaledale Delivery



En-suite + Private Shower,
Private Tea/Coffee facilities
TV Lounge with open fire
Easy access, ample parking
Non Smoking Establishment

Arkengarthdale Richmond North
Yorkshire DL11 6EN

Phone & Fax : Brenda Martin
01748 884051



IAN LAW

Painter & Decorator
EST. 1977

For **ALL** Interior & Exterior Work
Walker House Marrick
01748 884342



**UPVC Doors
Windows &
Conservatories**

The Old Mill Low Row
Richmond DL11 6NH
Telephone
01748 886356

THE BURGOYNE HOTEL

On The Green Reeth
Richmond North Yorkshire
DL11 6SN
Telephone & Fax
01748 884292

BUSES

School Transport - there have been several meetings and discussions with NYCC recently to try and improve the recent problems with School Buses as operated by Abbots - Arkengarthdale children have even enjoyed double decker rides to school. A number of assurances were given by NYCC for implementation at the beginning of the Autumn Term.

Service Buses - after further consultation with Arriva and NYCC amendments to the recently published timetable for the school holiday period are included in the usual timetable printed in the rear of this issue. *Reeth & District Gazette* consult regularly to ensure that this is a comprehensive and correct timetable. Times are always checked monthly before publication. Please note that it is effective from 8th August when the 0710 Richmond/Gunnerside and 1545 Richmond Gunnerside return to Richmond services are reintroduced. Arrangements are in hand to ensure that the 1545 from Richmond will run to Muker on both local Show Days. With additional services it is now possible to visit both local show by Bus!

Combine efforts with local Parish Councils and residents have succeeded in securing these services please use them or we will lose them. The "Bus and Boots" leaflet is to be updated and reprinted for the year 2000 season.

Early this Autumn there will be a local forum with bus operators and County and National Park representatives to examine all aspects of public and community transport in these Two Dales.

*In the meantime - thinking of visiting
Reeth or Muker Shows this year?
Then please consider taking the Bus!*

Arkengarthdale Methodist Church

a very sincere thank you to everyone who so very generously contributed towards the Roof and Refurbishment Scheme which is now completed. A date for your diaries is Friday 20th August when Dave Carlisle will present "A Lead Mining Miscellany" firstly, in costume! "A day in the life of a Victorian Mining Agent" and secondly "Faggertill Mine", this is to be accompanied by photographic slides.

Reeth Memorial Hall

At a recent meeting of the Memorial Hall Management Committee it was reported that the After School Club will cease use of Hall from the end of the Summer school term. No details were given as to the future of the Club or if it has a new venue. The Hall Committee refute a recent report in the *D & S* that the After School Club is moving from the Hall following a "dispute." The Hall Committee has worked very hard to ensure that facilities were made available to the Club whilst balancing the requirements of other Hall users. Ironically the After School Club has since requested further use of the Hall for most of the School Holidays. It was agreed, that using volunteers, the main Hall is to be redecorated during the school holidays after some repairs and improvements to the stage.

Dales Ladies

There is some confusion about the date for their next outing which will be to the *James Herriott Centre* in Thirsk. The date for this outing will be September 21st and not as circulated with the programme for the forthcoming season of monthly meetings, Full details can be obtained from Wendy Gardner on 01748 884113

Thank You

Barbara Laxton would like to thank her friends for making her 70th Birthday celebrations so happy and memorable. Also thanks to their generosity £155 has been sent to Amala Childrens' Home

Thank you - to my family, relatives and friends who sent gifts, cards, best wishes and prayers while I was in hospital, all I can say is thank you all again so much, and to the Staff on Ward Four at Northallerton Friarage Hospital.

Judith Calvert

Thank you from Christopher Silver
Angela and Mark would like to take this opportunity to thank you all on behalf of Christopher for the many Birthday cards and gifts received for his 21st Birthday. It was a lovely day enjoyed by all, especially Christopher

Swaledale Festival 1999 "Kemp's Jig"

One of the earliest Festival events this year was a one-man show by Chris Harris called "Kemp's Jig" performed in Muker Public Hall on Saturday 29th May.

Will Kemp was the bawdy and rumbustious clown in Shakespeare's acting company, given to improvisation and scene-stealing: "Hamlet's" line with which Chris Harris began "Let those that play your clowns speak no more than is set down for them" - was certainly inspired by him. He and Shakespeare must have had a love-hate relationship, as he thought Shakespeare a pedantic bore who also provide marvellous roles and opportunities for clowning, and Shakespeare disliked his plays being pulled out of shape but had to admit that the crowds came in. They filled Muker Hall, too, including a party of visitors from the Black Forest, for a hugely lively and enjoyable evening.

The last straw for Will was the success of another comic in the Company, the subtle and witty Robert Armin who played parts like 'Feste' in "Twelfth Night" with not a word out of place ... and Shakespeare loved it. "Right", said Will, "I'll show them," and he planned a "nine daies wonder," dancing and clowning his way from London to Norwich in 1600, to prove to provincials that the calumnies spread about him were false, and offering "many things merry, nothing hurtful."

This marathon Morris was the subject of the show. Chris Harris has re-created a very convincing and winning character for Kemp, with the simplicity and hilarity that we love in our favourite clowns - more kind than cynical, more bawdy than destructive or bitter. He danced, he dressed up, he re-enacted the events of the journey and took on the roles of people he met of dignitaries who greeted him; he gayed Shakespeare and Armin, and finished the evening with an outrageous performance of the Nurse in "Romeo and Juliet" a part Shakespeare never let him play.

One thing he might have enjoyed was more audience participation. Anyone who did join in was hauled up on the stage, and I think he'd have relished dealing with hecklers and improvising his script. But the audience responded warmly to the whole energetic evening. The German group said they'd come to improve their English, but didn't seem to have any problems getting his jokes. We all fell about at his antics with the Nurse's balloon - boobs; no language need for that! HB

GUNNERSIDE WI July Meeting

Members were joined by a number of visitors eager to hear our two speakers. First we listened to Sylvia Jay from the Otters and Rivers Trust. She told us about the serious decline in the otter population of this country in the 1950s and 60s, probably connected to the regular use of the chemical lindane in farming practices at that time. We saw some interesting slides illustrating how measures are being taken by the trust to encourage the return of the otter to the Rivers of northern England. Simon Lovell spoke next about the River Swale and the activities being undertaken by the Swale Regeneration Project. Members were particularly interested in his plan for a "Clean up the Swale Day" over the weekend 7th and 8th August. Some members promised to turn out to collect rubbish from the riverbanks that weekend. The vote of thanks was proposed by Jennie Mansfield.

President Margaret Rutter read out a letter from the Gunnerside Millennium Committee, thanking the WI for their support in the recent Gunnerside Concert, both on stage and with serving supper. Finally, we discussed arrangements for our August Coffee Morning which traditionally takes place on August Bank Holiday Monday.

Gunnerside WI August Bank Holiday Coffee Morning

Monday 30th August from 10am

Gunnerside Village Hall

Coffee - Tea - Squash - Cream Scones - Biscuits - Bring & Buy Stall - Cake Stall - Plants - Tombola

Reeth & District Agricultural Society

88th

ANNUAL SHOW

to be held at REETH on

Wednesday 25th August 1999

Open to the Public at 10 am

- CATTLE - SHEEP - SHETLAND & WELSH PONIES -
- MOUNTAIN & MOORLAND - HEAVY HORSES -
- CHILDREN'S RIDING - MOUNTED FANCY DRESS -
- BREADS & CAKES - HORTICULTURE - PRODUCE -
- HANDICRAFTS - CHILDREN'S CLASSES -
- Y.F.C. CLASSES - HANDWRITING -
- WALKING STICKS - PHOTOGRAPHY -

Attractions:

- "HUDDLESTON" Motorcycle Display Team -
- FELL RACES - SHEEP DOG TRIALS
- REETH BRASS BAND -
- DRY STONE WALLING DEMONSTRATION -
- TRADE STANDS -

SHOW ADMISSION: Adults: **£3**, Children Under 14 years: **£1**

SHOW NIGHT DANCE 9 pm to 1 am

to "Silver Shade" Disco

Admission to Dance : **£3** at the door.

Secretary:

Mrs B Harker,

Stubbin Farm, Harkerside, Grinton, Swaledale, North Yorkshire, DL11 6JD

Tel: (01748) 884247

ALL ENTRIES CLOSE - MONDAY 9th AUGUST 1999

REETH TWO DAY MOTOR CYCLE TRIAL

Saturday July 24th and Sunday July 25th were two momentous days in the diary of motor cycle trials Riders, the occasion of the Two Day Crossroads Commercial Motor Cycle trial based in the Reeth area and organised by the ever improving Richmond Motor Club. So popular is the trial nationwide that the entry list had to be closed well before the Trial as the riders were queuing up to get entries and accommodation in the area. Riders from as far a field as Fort William, Hampshire and Somerset made up the final list of 165. Thanks to the generosity of farmer Harold Brown, once again the Parks Filed was made available for the start and to accommodate riders and support parties wishing to camp or caravan.

Starting on Saturday at 1pm the course took the riders to the Marske area followed by Fremington Edge, Cogden Gill, Grinton Gill, Harkerside and Barney beck. 30 observed sections. Sunday started at 10am taking the riders to Desmonds Gully, Harkerside, Low Houses and Summer Lodge then across into Wensleydale to sections at Arngill, Woodhall and Bolton Gill before returning over the tops to Grinton.

With such a large entry it was necessary to have a "Hard Course" for the experts and a "Clubman's Course." This does increase the work of the organisers, the bulk of which is undertaken by Angela and Richard Sunter and Andrew brown. They were particularly grateful for the tremendous help given by Kevin Hutchinson, Ian Porter Merry and Kevin Sharp for expert flagging and marking of the course and to the many observers for their three hour stints at the sections.

With such a large and talented entry it was great to see local ace Philip Alderson on top form and emerge a clear winner on 21 points with Roger Williams once again having to settle for second place on 39 and Eddie Aitken third on 47. Good rides from Paul Sader 4th, Gary Thwaite, Les Richardson 7th, Gary Watson 10th, Paul Wearmouth 16th, Gary Clement 18th, Andrew Brown 20th, Dave Watson 22nd and Mark Sunter 24th kept the flag flying for Richmond Club.

In the Clubman's event congratulations to Anthony Brockbank (second last year) for a fine win closely followed by John Fraser and Ian Chetham. How pleasing it was to see John Fraser, new Clerk of the Course for the Scott trial last year, now getting back to form and fitness after a very debilitating time that has plagued him for many months.

Notable absentee from the trial was the intrepid David (Tubby) Allinson who is unfortunately ensconced in hospital undertaking major surgery. If good wishes help in recovery David will soon be back on his feet. Make it very soon David!

Many people make great contributions to the successful running of such a major event and the organisers are particularly grateful to Brian Robinson of Reeth Garage and to the many keepers, farmers and landowners who make the trial possible. In this era of acrimony regarding access, motor cycle riders and spectators really do appreciate the tolerance and support from these people in this area. A final word of thanks from all who enjoyed the hard work and hospitality of the staff of the Buck who laid on a memorable social occasion to round off the weekend.

Results of the Arkengarthdale & Swaledale Gun Club Shoot held at Bouldershaw Hills on 12th June:
Open 5DTL Trial Sweep: 1. K Stones; 2. N Sunter; 3. D Longstaff. Open 10 DTL Trial Sweep: 1. K Stones; 2. J Short; 3. T Hicks. 10 DTL: 1. A Short; 2. J Short; 3. T Hick. 5 Pair Driver: 1. J Short; 2. D Irwin; 3. C Sayer. 5 Pair Springing Teal: 1. D Coates; 2. J Short; 3. T Hicks. Local - Ladies Cup: 1. E Stones; 2. L Richardsdon; 3. A Lynas; Keepers Cup: 1. D Coates; 2. N Stones; 3. M Irwin. Martiaux Cup: 1. K Stones; 2. A Kendall; 3. D Irwin. Juniper Cup: 1. A Kendall; 2. J Lynas; 3. N Stones. Uner 18 Shield: 1. David Coates; 2. Mellisa Guy; 3. Scot Lynas. Charlesworth Skeet Cup: 1. J Allison; 2. K Stones; 3. B Sunter. Wilson Cup - Overhead: 1. K Stones; 2. D Irwin; 3. N Stones. Overall G; Lynas Cup: 1. K Stones 63 points; joint 2nd J Lynas and D Irwin 49 points; 4. D Longstaff 39 points; 5 N Sunter 37 points.

Thank you to all who helped organise the event and to the ladies for the refreshments

SWALEDAL E AGRICULTURAL SOCIETY

MUKER OPEN SHOW

ON

WEDNESDAY
1ST SEPTEMBER 1999

at 10 am

40 SILVER CUPS - SPECIAL PRIZES
& Other Premiums to the value of £3,500
INVITATION SHEEP DOG TRIALS

SHEEP, SHEEP DOGS, WALKING STICKS,
CHEESE, BUTTER, EGGS, BREAD, etc.
HORTICULTURAL & HANDICRAFT SECTION
FANCY DRESS PARADE at 2pm
QUOITS COMPETITION, TUG-O-WAR (team of 6)
STONE WALLING DEMONSTRATION,
CHILDREN'S SPORTS
PRIMARY OPEN FELL RACE at 3 pm
OPEN JUNIOR FELL RACE at 3.30 pm
OPEN FELL RACE at 4 pm

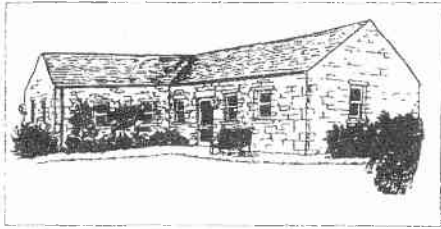
Music by MUKER SILVER BAND

ADMISSION TO FIELD: £2, Children under 15 years: £1
- FREE CAR PARKING -

Schedules, Entry Forms, etc. on application to The Secretary,
Mrs M Rutter, Jubilee House, Gunnerside, Swaledale, North Yorkshire, DL11 6JG

Tel: (01748) 886330

ALL ENTRIES CLOSE - 21ST AUGUST, 1999



It's a Doc's Life

A column with a medical slant

Many patients will have contributed over the years to the "Swaledale District Nurses Fund". This was set up some years ago following a fundraising effort after the death of a local patient. It has proved very successful and many groups and individuals have been very generous over the years. I thought you might like to know what exactly we have done with the money.

One of the first things we bought was a syringe driver. This is a small, battery driven device designed to deliver accurate amounts of pain-killing drugs to terminally ill patients. Prior to buying one we always had to borrow one from elsewhere. It will be very useful in the management of pain control and in the palliative care of cancer patients.

Other major purchases have been a Polaroid camera, which takes photographs of such things as leg ulcers with a grid superimposed on it so that we can map and monitor the progress of healing. We have also purchased a blood glucose meter (for diabetes monitoring), an otoscope (for

looking in ears), an electric ear syringe and a Noot's tank (not for fish but for ear syringing).

It has been useful to have funds for items that we would have great difficulty getting the Health Authority to pay for, an example being a desk for Dorothy McIntyre and filing cabinets. Also storage boxes for dressings and the children's toys.

Recent acquisitions include a Doppler machine, which uses ultrasound to detect pulses in patient's lower limbs and sphygmomanometers (blood pressure machines), for the district nurse and health visitor.

We have always tried to buy things that would directly or indirectly benefit the patients so we have purchased an extensive range of patient information videos on common medical conditions. These are available to borrow at any time. We have also bought several transcutaneous nerve stimulators (TENS machines) which we loan out to provide pain relief in such differing situations as arthritis and childbirth.

We mustn't forget the bucket we bought to soak patient's legs and finally, just so it looks as though we know what we are talking about we bought ourselves a medical dictionary!

As I said before many groups and individuals have been very generous over the years and I would like to thank everyone who has contributed to the fund. We fortunately still have some funds left and we are looking for useful items which will enhance our care of the patients and benefit the community as a whole. Thanks again.

Dr. Paul Bond, The Surgery.

RICHMOND AND SWALEDALE COMMUNITY EDUCATION

PROGRAMME FOR IT IN SWALEDALE – TUTOR JANE CLARK



MUKER

Friday – Village Hall – 10am to 12 noon

CLAIT/IBT2 (vocational)

20 weeks from 24 September to 3 December and 14 January to 24 March

Priority to be given to past students

FEE: £37.40

LOW ROW

Friday – Village Hall – 1pm to 3pm

Introduction to Your Computer (non vocational) -- aimed at the over 60s

5 weeks from 24 September to 22 October

FEE: £17.00

Friday – Village Hall – 1pm to 3pm

Introduction to IT (vocational)

10 weeks from 5 November to 3 December and 14 January to 11 February

FEE: £21.20

Friday – Village Hall – 1pm to 3pm

CLAIT (vocational)

15 weeks from 3 March to 14 April and 5 May to 26 May and 9 June to 30 June

FEE: £29.30

REETH

Thursday – Reeth Memorial Hall – 7pm to 9pm

Introduction to IT (vocational)

10 weeks from 23 September to 2 December

FEE: £21.20

Thursday – Reeth Memorial Hall – 7pm to 9pm

CLAIT (vocational)

15 weeks from 13 January to 17 February and 2 March to 13 April and 4 May to 11 May.

FEE: £29.30

- A concessionary rate of £5 per course is available to those in receipt of a means tested benefit or unemployment benefit.
- For those on vocational courses (with an exam) exam fees will be payable separately and there are no concessionary rates for these fees.
- CLAIT fees are £14.90 and IBT2 fees are £22.30.
- To register your interest in any of the courses please write to the Community Education Office, Richmond School, Darlington Road, Richmond, DL10 7BQ or telephone on 01748 850171.
- Any cheques should be made payable to Richmond School (NYCC)



Reeth & District SPORTS

Will be held at **Reeth**
Monday 30th August

starting at **1pm** with
Open FANCY DRESS

Assemble on **High Row** -

Judging on Sports Field

Open Traditional Children's Sports

including: Sack Race; Welly Throwing;
Three-Legged Race; Egg & Spoon Race;
Obstacle Race; and Slow Bicycle Race

Quoits Challenge Cup

Open Fell Race (up to 18 yrs)

Local Junior Fell Race (up to 12yrs)

Open Mile (15-18 yrs)

Open Mile (11-14 yrs)

Open Half Mile (10 yrs and under)

Junior Tug-of-War (15 yrs and under)

Senior Tug-of-War (8 per team)

Reeth Brass Band

will be in attendance

ADMISSION 50p CHILDREN 10p
CAR PARK 50p

Refreshments on the Field

Coconut Shy, Treasure Island, Raffle,
Bouncy Castle and other added
Attractions, if possible.

**ALL ENTRIES TO BE MADE ON THE
FIELD ON THE DAY OF THE SPORTS**

All Challenge Cups to go to local competitors
(Programmes available on the day)

FREE Under 16's Disco to "Inspirations"
in Reeth Memorial Hall from 7pm - 9pm
after the Sports

*A Warm and friendly
service awaits each of
our clients at:*

"The TOP SHOP"

Reeth Hairdressing Salon
Arkengarthdale Road
(opposite Reeth Garage)

Tel: 884627

*Offering a high
standard of
UNISEX
hairdressing*



LOW LIGHTS and HIGH LIGHTS with
"Easy Mesh" are our speciality -
including cut and style from £35
PERMS

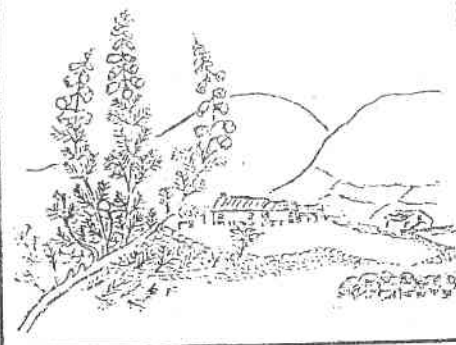
including cut, set or blow-dry £35
followed by your first complimentary
shampoo and set or blow-dry

REWARD CARDS:

are available for regular clients,
enabling them to receive special
offers, discounts, etc.

GIFT VOUCHERS

an excellent Gift at variable prices



Frogmore's Silly Question

For a time recently I had been out of touch with my friend Frogmore. I was told he was up, or should it not be down, in London. Now, that was most unusual. I've known Frogmore to be over in Huddersfield or even as far from his home in Leeds as Scarborough but, apart from the Dales, hardly anywhere else and never outside Yorkshire.

Why London? It turned out that, like some of our Dales' Councillors, Frogmore, with his experience of education and local government, had got himself on to one of those departmental advisory committees which governments of all parties set up to develop ideas and sometimes, let us face it, to postpone action as long as possible.

I'm not saying that Frogmore's London trip was all play and no work but the account he gave of it dwelt more on the pleasure of seeing the sights and the benefit of "all expenses paid" than on the rendering of advisory services.

In recent years I've often wondered why there has been so much enthusiasm to get votes at Parish Council Elections and such a poor turn out when it comes to Elections for Council of Europe seats. Could it be that the prospect of London excursions or the like has something to do with it?

Be that as it may, Frogmore certainly enjoyed his sojourn in the capital. Not only did he manage to fit in one or two visits to places of interest but he was treated to lunch at the House of Commons by a friendly MP. For Frogmore that was an occasion to be remembered; I'm sure he won't min my telling you. It was a special day if only because the famous beet and lark pie was on the menu. Frogmore enjoyed the dish and in a moment of unusual exuberance, doubtless encouraged by the excellent vintage of the wine, he asked to be permitted to congratulate the chef. This he did, and went further, he asked for the recipe. "Oh," said the chef, "just fifty fifty - one lark to one ox."

EGF

LETTERS

I fully endorse the letter written to the Minister for Local Government and Housing reproduced in the July issue of the "Gazette." Hereas holiday home owners are important to both the community and the local economy there is no justification why they should be subsidised as at present.

I would like to take the opportunity to add two more points and address these specifically to Richmond District Council whose duty it is to collect Council Tax.

1. I do not know whether the oft quoted "20 week" rule is defined for council tax as it is for income tax but if it is then the property need only be available for letting for 20 weeks and need only be actually for 10 weeks (Section 504 Income and Corporation Taxes Act 1988) If this definition applies then many more holiday cottage owners are seriously underpaying tax.
2. I recently had cause to peruse the Electoral Roll and was surprised to read how many people confirm they reside in the dales (thus making them liable to 100% or 75% Council Tax.) I would suggest that the Council would find it a rewarding exercise comparing the list of those who admit that are living in the Dales for one purpose with those who claim 50% relief from tax because they do not live in the Dales.

D N Williams, Arkengarthdale

Thank You

Mrs N Whitehead of Briar Dene, Muker would like to express a sincere thank you to all friends, neighbours and relatives who have sent cards, presents and good wishes during her stay in hospital at Northallerton. She is now much improved and hoping to be out of hospital shortly.

REETH COUNTY PRIMARY SCHOOL NEWS

Parents, Governors, Trustees and friends of Reeth School attending the Leavers Concert found they were entering an African Jungle due to the wonderful scenery the children had created under the guidance of teacher Karen Newsam. Everyone was then entertained with recorder and cornet playing, action poems and musical performances of "The Three Billy Goats Gruff" by Class 3 and "Big Mamma" by Classes 1 and 2.

The children moving on to Richmond School were presented with book tokens from "The Friends of Reeth School Trust" by Mrs Lockett, the trust's Secretary. Prizes for the best individually researched project by year 5 pupils were presented by Mrs Alston Townley to Lynsey Bainbridge and Suzannah Barningham. The Elizabeth Sincalir Prizes for the best individually researched project by year 6 pupils were presented by Mr Tom Guy, on behalf of the Trustees, to Eleanor Abel Smith and Thomas Gill. Om Guy complemented all the children on the high standard of the projects and said how difficult it had been to select the winners. He also thanked the children and teaching staff for the excellent concert. Mrs Lockett and Mrs Hannah Guy were given bouquets of flowers from the school. The afternoon concluded with the traditional "Leavers' Tea" prepared by the kitchen staff for the leavers, their parents and guests.

Cycling Awareness:

The pupils who have recently completed their 'Cycling Awareness' classes were presented with certificates and badges for themselves and their bikes. The successful children were: Christine Beeston, Thomas Barningham, John Ellerton, Scott Malton, Maryann Allison, Robert Sunter, David Coates, Lynsey Bainbridge, Claire Stephenson, Thomas Gill, Rachael Duck, Nicholas Copeland, and Catlin Davies. The children wish to thank Ronnie Woodward and Sarah Allison for helping with the classes and the residents of Place Hill and the occupiers of the Dales Workshop Units for their patience on Wednesday evenings.

Swimming Awards:

ASA Award certificates were recently presented to the following children: Nicholas Copeland and Georgina Stocks - Silver and 800 metres; Rachael Duck, Claire Louise Guy, Matthew Copeland - Challenge 2; David Coates and Maryann Allison - Challenge 1; Maryann Allison, Claire Louise Guy and Rachael Duck - 400 metres; Suzannah Barningham and Patricia Haste - 200 metres; Christine Beeston, Paul Wilhelmy and Shelly Back - 100 metres; Eleanor Abel Smith, Scott Malton, Adam Calvert, Kevin Sunter, Jodi Johnston and Colin Blatherwick - 50 metres; Hannah Jones, Jack Bissicks - 25 metres; Isabella Haste - 10 metres and Harvey Pilgrim - Puffin Award. Thanks go to their teachers and staff at Richmond Swimming Baths for all their help.

Ofsted Report:

"Pupils are attaining high standards. They have a positive attitude to school, works hard and concentrate well" - these were part of the findings of a team of Government Inspectors who visited the school in May. They particularly praised the pupil's attainment and progress in music.

Thanks - Mrs Alderson and Mrs Coates would like to thank all the Leavers for the lovely presents.

Kosovo Appeal

Many thanks from Reeth Congregational Church to all who gave go generously to the appeal for goods to be sent to Kosovo through Blythwood care. Ten very full boxes left Reeth on 30th June to form part of a larger consignment from Stockton and a cheque for £60 was sent directly to the headquarters of the society to be used in the same cause. We have received a letter in the last week confirming that the whole shipment would leave the Kent depot at the end of July en route for Kosova and asking us to pass on thanks and appreciation to all concerned.

Exciting Times & Narrow Squeaks Part I

INTRODUCTION

As I made my way down the drive away from Foleshill Vicarage, on August 8th 1933, I little thought that the succeeding tears would be so exciting as they turned out to be. Britain at that time was in the depths of the **Great Trade Depression**, as it was called -- hundreds of ships laid up, factories empty, prospects for any kind of employment exceedingly dim.

I was then aged 20, so I gently told my parents that I was going out to **seek my fortune**, as the saying is, and to join the Army. Father was not very pleased and my poor Mother quietly wept when I said goodbye. But I knew what I wanted to do, and that was to find myself on the **North West Frontier of India**. All the excitement and glamour of those long years before the Second World War lay in those tribal territories, home of the fiercest people on earth.

Taking the King's Shilling.

The first thing to do was to **enlist**, so I took a bus down to the Depot of the Royal Warwickshire Regiment at Warwick, and was duly sworn in, **taking the King's Shilling** as a faithful and loyal servant of His Majesty king George the Fifth. "But," said they, "what are you doing **here**? You should be in Signals, not the Infantry". (For the previous three years I had been under training as a Wireless Operator and had my First Class ticket, qualifying me for service on the transatlantic liners of those days, or Union Castle to South Africa, or P&O to anywhere in the Orient). So they sent me up to **Catterick**, there to begin my career as a faithful and loyal Signalman...

28 Jan 36. OUTWARD BOUND.

The troops paraded on deck, and there was a Two Minute Silence for His Late Majesty, Then, at 1400hrs, we pushed off

and sailed down Southampton Water.

Our ship is brand-new and her name, 'DILWARA', is said to mean 'beautiful lady' -- a gem of sarcasm. They say she will take us to India in 21 days; but what's the hurry?

We passed NETLEY on our left, and we devoutly hoped never to see the inside of the place during our tour. Off CALSHOT, of Schneider Trophy fame, we met H.M.T. 'NEVASA', laden with Home-going troops. Cheers and shouts of "What's Blighty like?" from them, but weak response from us.

The White Star liner 'MAJESTIC' caught us up and then swept westward, true to her name. Her last voyage, our first.

The British Empire

Our voyage to India was very much a tour of the British Empire: Gibraltar, Malta, Port Said, The Suez Canal, Port Sudan, Aden, Abadan in Iraq (on the River Tigris and really the Anglo-Persian Oil Co.), and finally Karachi in India -- **all with at least one battleship of the Royal Navy well in evidence.**

28 Feb 36. CAMBRIDGE BARRACKS, RAWALPINDI.

at 4 in the morning we arrived in RAWALPINDI, exactly one month after leaving Home. We stepped out on to long empty platforms, with the stars, still and serene as ever, shining overhead, and a keen Himalayan wind biting our ears.

After two hours waiting in the darkness we were picked up by lorries and taken up to Barracks. Here we were met by the Regimental Orderly Serjeant, a fierce fellow, who roared:

"Where YOU come from?"

"Karchi," we answered.

"Posted 'ere?"

"Yes, Sir"

"Well, take that 'ay off yer topees and go

into that office. Get a copy of Standing Orders and LEARN 'EM LIKE YER BIBLE".

A Day in Barracks.

Everything in the Barracks of 1st Indian Divisional Signals is spotless. The Paintwork glistens, the brasses glitter, everyone looks tough and fit and as brown as a nut. Everyone has been on at least **one Frontier Campaign**.

Reveille is at 6, when the nappi (barber) comes round, wakes you up and shaves you in bed with his cut-throat razor (one of 7 on display in his leather waistcoat).

Then the boot-boy arrives with a cup of tea ('char') and whips away your boots, bandolier and topee to clean them. You grab your towel and toothbrush and run down stairs and out to the bath house for a speedy wash. Back upstairs, change, and out on PT parade at 0700 hrs.

So your day begins.

On Leave.

A party of 5 of us hired a taxi and hurtled off at breakneck speed to MURREE, our hill station. Here I took myself off on a 24-mile trek towards the Kashmir border through wild country.

I took a picture of this **hill boy**, and he at once put his tongue out at me and ran screaming down the hillside, raising the local village. I walked rapidly off but was soon surrounded by a bedlam of shouting villagers and a pack of dogs circling round me.

I kept on walking and a rather crestfallen Williams Sahib arrived back at the Leave Bungalow, only to be told that he should never have gone so far and didn't he know it was out of bounds anyway?

"Them fellers might 'ave nabbed yer, Bill, and then you'd be absent without leave, see?"

"But 'e couldn't be -- 'e's on leave, ain't 'e?" So the conversation went, and I let them talk it out....

"Trouble on the Frontier".

So blazed this time-honoured headline across the Rawalpindi newspapers when, on 26 Nov 1936 a small force of Tochi Scouts was ambushed somewhere up in the Tochi Valley, not far from the Afghan border.

The effect on us was electric. Within a day or two we were speeding to the scene. Our personal kit was of the slightest, for, as someone remarked, "What will a tribesman do to get himself ready? Scoff a chupatti and grab 'is bondook!" True enough.

We crossed the Indus River at the Kushalghar Bridge and reached BANNU, a pretty little Frontier town (called a 'cantonment' hereabouts). (chupatti: thin cake of unleavened bread; bondook: Frontier Rifle).

K Section marches out.

In the grey light of dawn next morning K Section, of the 2nd Indian Infantry Brigade, marched out from **Fort Edwardes, Bannu**. We are 21 British ranks and 60 Indian. Sjt. Ellison, our Section Serjeant, is country-born, so he can speak to the LORs in their own language.

From here we march our first 17 miles up the Tochi Valley, crossing the Tochi River by the Shinki Bridge seen here.

Tochi Camp: The First Shots.

The 2nd Indian Infantry Brigade, with its 5 infantry battalions, its 900-odd pack-mules, Mountain-guns, Pioneers, Sappers and Miners, and, of course K Signal Section, some 3500 men all told, marched out into the sombre, hostile and remote Tochi Valley, against an unseen enemy who could nevertheless see us as clear targets.

With our pack-mules beside us and towering crags above we were met by the 'tock-doom' of enemy rifle fire echoing down the valley, and the curious "wheee-

aarp" of bullets overhead. Under such conditions, then, we made our first camp in the Tochi Valley.

In our next camp, Biche Kashkai.

At sundown the advance guard withdrew within the camp, leaving the outlying pickets to defend themselves in the gathering night. Darkness fell, and soon a burst of firing from one of the Dogra pickets told us that things had begun. Then came a dull boom, followed by more rifle firing and then another dull boom.

The enemy were bombing the picket, and suddenly a faint yell came from higher up the valley. We heard it repeated from place to place for some time with chilling persistence. It was of course the tribesmen's rallying cry.

Biche Kashkai: The Dog-fight.

The yell was prolonged into a continuous cry which grew louder as the enemy came charging down the hill. Very lights went up and there was a deafening crash of machine-gun fire all round the camp.

Someone shouted "**Stand to your rifles! They're rushing the camp!**" Indeed by now they sounded very close. We heard a tribesman scream out "**We want the Sikhs and the British!**" and somebody on our side roared back "Come and get them!"

Then the Sikhs along our northern flank stood up as one man and rushed out to battle, **howling and bellowing like mad animals**. There was a close hand-to-hand fight of furious hacking and chopping, tribal knife against Sikh kirpan, and after that fighting died away. I dashed out and took a picture early next morning, of the camp just as it was.

Coronation Camp: Repairing N°1 Set.

The brain-child, so they say, of a female genius at Marconi's, the N°1 Set Wireless is built to withstand dashed nearly anything except fire. They are carried by pack-mules which sometimes bolt suddenly at full speed down a

mountainside, tossing off the pack wireless set as they career madly down. The set crashes from rock to rock in a series of sickening crunches, and anyone would suppose it to be a write-off, but as the K Section Instrument Mechanic I often found little wrong apart from a few cuts and bruises, as it were.

14 Aug 37 From Coronation Camp to Shawali.

We were up at 0400hrs to load our mules in the Starlit darkness. All was quiet as we marched away from Coronation Camp, except for the tiny cheep-cheep of morse signals from the pack wireless set beside us.

Dawn broke as we followed the track down into the SHAKTU VALLEY. Suddenly a perfect storm of rifle fire burst upon us from both sides of the wooded valley, and there we were, a completely open target, not knowing from Adam where the enemy lay. Two of our men dropped, to die of stomach wounds later. A bullet-hole suddenly appeared in the right flank of the mule just ahead of me. Amazingly it **didn't** drop but trotted on to the next halt, where it finally collapsed. We opened fire with everything we had, but the attack continued all day until evening. The enemy ceased fire at last and we hastily dug ourselves in at SHAWALI.

The Deserted (ha! ha!) Village.

We settled down in Shawali camp and in the evening most of us were gambling in little groups out in the open, while I was scribbling these notes by candlelight on a box. There was a sudden crash of machine gun fire and a hiss of bullets close overhead from the village of MIR ALI, which we had thoroughly searched and thought deserted!

I blew out the candle and dropped down behind the box. One of our fellows was hit in the head and didn't last long. The shots, they say, were fired by a renegade subadar who had deserted from the Tochi Scouts.

Gurkhas on 'Everest'.

The 1/6th GURKHAS were attached to our brigade to help capture the high hills overlooking Shawali Camp and rout out the enemy. This they did in next to no time, giving absolutely no quarter.

WALADIN CAMP by day & night.

We were crouching round with our bottles of beer in the dim light of a single hurricane butti (lamp). Someone was saying "Oi feel so brahned orfo'id loike ter bunkaro the whole flippin' submuckin, oi tell yer". "Shouldn't 'ave joined, mate", said someone else, when suddenly there was a tremendous "DUTUTUTUT" from the hillside above, followed by the rushing sound of bullets and a scream from one of the tents behind us. One of our I.O.R.s had caught it and we couldn't save him.

It appeared that the tribesmen had captured a VB machine-gun, but of course we never found it.

Through the Nanga Tangi.

We entered Bhattani country through an extraordinary cleft called the NANGA TANGI, where the River Nanga flows between sheer cliffs rising dizzily to a height of 600ft or so -- an ideal spot for an ambush would you say? ... and you would be right! An ambush was attempted and a detachment of Sikhs was detailed off to deal with it. They charged up to the enemy-held ridges and after a fierce hand-to-hand scrimmage they brought down five dead tribesmen.

Coming in for the Jirga.

The moral effect of this last action was very great and the tribal chiefs decided to sue for peace. Some tribesmen came in for a Jirga, or conference. Pale, fierce-looking men they were, and handsome in a cruel way, with pale eyes and lean, aquiline faces.

Journey's End.

To mark the end of the Waziristan Campaign a reception of Brigade reps was

held in the ruins of KOT Fort, in Bhattani country, and I was detailed off as photographer. Our Commander in Chief General Sir Robert Cassels simply went down the line of men chatting briefly with each man introduced to him by our Brigadier, 'Foxy' Noyes. There were no speeches, yet this event was in its quiet way, historic.

So Sgt. E & I walked slowly back to K Section, and that was that.

July 1939 Homeward Bound.

The war-clouds were gathering over Europe, and we were being called Home on the old troopship 'LANCASHIRE'. Nearly all of us were NCOs and required to instruct and lead the recruits to the Army at home and those who were to be called up.

So we were a very special, indeed vital, boatload, and on this account we were escorted on either side by two 'Southampton' class cruisers, HMS 'GLOUCESTER' and HMS 'MANCHESTER'. They stayed close to us all the way up the Red Sea past the potentially hostile coastline of Italian Somaliland and Eritrea.

Finally, in the Med. we had a view of a long line of German cargo ships on its way to the Rio Tino for copper. Sinews of war, old friend...

Family reunion at Foleshill Vicarage.

We landed at Southampton in August 1939. War was declared, however on September 3rd so no home leave until **November**, as preparations for war in the Armoured Division at BULFORD, where I found myself, were an absolute priority.

F.T.C.W.

to be continued:

The 21st Askrigg Exhibition

Askrigg Village Hall

August 14 to 22 Open Daily 10am - 7pm

Pottery, Paintings, Prints & Photographs

Come and Visit



just visit our tea-room also

Pony rides available at £1.00

Open Sun - Thurs (5 days)

June to September 2pm - 6pm

July & August 11am - 6pm

Tel: 01748 886224

GRINTON

At a recent meeting of the Parish Hall Committee and residents of Grinton were informed of a generous grant from the National Lottery (Small Projects Grants) of £5000. This will enable the refurbishment of the Parish hall to proceed. Grants have also been made by Richmondshire District Council, Rural Development Commission, Yorkshire Dales National Park and NYCC (European money). A small sub-committee was formed to make the decision on work in progress. It is hoped to have the Hall operational by October/November.

The meeting also heard of the Millennium Projects proposed by the Parish Council - a small presentation plaque to the children of the Parish and a photographic record is to be made of the year 2000. Also discussed was the possibility of a Millennium Gate for the Parish Hall.

REETH & DISTRICT GAZETTE

As we enter our fifth year, the ever increasing popularity of the this local magazine does cause a number of logistical problems.

It is very time consuming to collate, publish and print. All the workload is undertaken by unpaid volunteers. The printing currently has to revolve around spare time when the Post Office is closed at Reeth. An alternative venue for all the printing equipment could relieve the problems as other persons could assist with the printing, collating and distribution process. Planning Permission has been granted to convert the garage adjacent to the Post Office as a Community Print Shop and funding is now being sought.

Funding is also required to replace the duplicator. Is it now time to reconsider a nominal charge for the magazine?

All photocopying, duplicating and laminating facilities currently available at Reeth Post Office are courtesy of the Gazette and do not form part of the private business of the Post Office. Combined with the nominal revenue from advertising they are essential to cover the production costs of each issue.

Over the next few months there will be some changes to the Editorial team. Hopefully the workload can be spread.

Advertisers and contributors to the Gazette could assist by complying with the deadline dates. (*Deadline date for the Sept Issue is 23rd Aug. earlier if possible!*)

The *Darlington & Stockton Times* have invited the Gazette to be included on their Website. There will be a nominal cost for this facility which will need to be addressed with our regular advertisers.

These problems are being discussed within our current team and some will be agenda items for the forthcoming Annual Meeting in September. Comments from readers and supporters are always welcome.

Django and Helen of Porch House Thwaite would like to thank everybody for their cards, gifts and good wishes on the birth of their son baby Django

Yorkshire Dales National Park

List of Current Planning Applications:

Drovers House, Low Row - listed building consent for repairs to garage/store and construction of two dog kennels.

Hunt House, Whitaside - removal of hardstanding.

Birds Nest Cottages, Low Row - listed building consent for alteration to include repairs to stone slated roof and ridge, to form window and door opening, new floors and repairs to structure.

Est Stonesdale Farmhouse, Keld - full planning permission for change of use from Bed & Breakfast accommodation to residential.

Gunnerside - full planning permission for construction of packaged treatment plant, with sewer overflow and associated site compound. At filed adjacent to B6270

CB Inn Arkengarthdale - full planning permission for i) two storey extension to provide 9 bedrooms ii) external alterations to kitchen and erection of workshop.

Marrick Priory - listed building consent for internal alterations for fire safety.

Foal lngs, Muker - full planning permission for two storey extension and alterations to existing dwelling.

Gunnerside Mill - outline planning permission for conversion and extension of buildings to create three dwellings and three business units.

Muker - full planning permission for conversion of former garage and store to form a one bedroom private dwelling.

Arkengarthdale, Gunnerside and Reeth Moors - full planning permission for annual motor cycle trial.

Roof Farm Gunnerside - full planning permission for alterations and extension to existing store to form a two bedroomed annexe to existing dwelling.

Harker View Reeth - retrospective planning permission for the erection of a summer house.

For information on these applications or any other planning matters please contact the YDNP Area Planning Officer, Rachel Whaley, Tel: 01969 650456 or attend the Planning Surgery at Reeth NPC every Monday (except B. H.) 11am to 1pm

YDNP News - in Brief:

Election of Chairperson deferred until September.

Following a tie in voting for two candidates for a new Chairperson at the recent Annual Meeting the election for Chairperson and Vice-Chairperson has been deferred until the September meeting.

Dales Countryside Museum the new Exhibition Hall has been dedicated to the late Assistant National Park Officer, John Baker.

Community Clear Up - loose feed bags and silage wrap are the target of a "Community Clear Up" weekend - 7th & 8th August as part of the River Swale Regeneration Project.

Renewed push for the Woodlands of the Dales - "The Dales Woodland Strategy" has been renewed to ensure the conservation and sustainable use of woodlands within the National Park.

Draft Management Plan - "Yorkshire Dales: Today & Tomorrow 2000 - 2005" copies of the plan have been circulated to Parish Councils and various organisations, and can be seen at NPCs. Comments are invited by 30th Sept.

Exhibition - a Exhibition of the work of Marie Hartley, Joan Ingilby and Ella Pontefract is being held at the dales Countryside Museum until 20th Aug.

"Getting Around the Yorkshire Dales" - a guide to public transport in the National Park has been delivered to homes throughout the Park. Services benefiting Swaledale are detailed inside the back two pages of this issue.

"Yorkshire Dales Lamb" - a brand is born - with the support of the Northern Dales Meat Initiation the Authority has given its support to its logo being used to promote the very best in lamb - Yorkshire Dales Lamb.

Prize

Author, Jane Gardam, who has a property at Low Row has been awarded the 1999 Heywood Hill Literary Prize for a lifetime's commitment to literature. Jane is described as "a writer of wonderful versatility."

PARISH COUNCIL REPORTS

Buses - much parish council time has recently been spent trying to resolve problems with the local bus services - as reported elsewhere.

Bus Flags and time table cases are available, FREE from NYCC provided the Parish Council erect them.

Marrick - were delighted to get the service introduced for Marrick and Hurst on Saturdays. The first day it ran 13 people boarded the bus between Marrick and Hurst. Arriva have been complemented on the Service which is supported by NYCC

Reeth - most of the funding is now in place for the second phase of the enhancement scheme which is to cobble the area used by the Market and provide an open band/performers stand. Work is expected to commence in October.

Bonfire - the Parish Council has no intention of stopping the traditional November Bonfire but they are faced with a number of dilemmas. The Bonfire can not be expected use the area of the new cobbles for the heat would ruin the surface and the work. Current Health and Safety requirements require improved marshalling of the actual bonfire and tighter controls on its construction. The very location, adjacent to a main road is enough reason for it to be prohibited. Over the last few years requests to restrict types of "rubbish" placed on the bonfire have been blatantly ignored. Ideally a new site is required and the fire needs to be constructed on garden rubbish only - not household or builders rubble. The Parish Council will be pleased to consider offers of a new site. Meanwhile arrangements with the local Fire Service for the Firework display are continuing

Civic Amenity Skip - an experimental civic amenity tip for household waste is expected to be placed on Reeth Green from 10am on Saturday 18th Sept - to be confirmed in next issue -. The skip will be removed once full. If successful this could become a monthly event.

LATE ITEM Mobile Library - due to a breakdown the Mobile Library was not able to follow Route 7 Reeth, Langthwaite, etc on 2 Aug. That visit is now rescheduled for Mon 9th Aug

CHARITY FOOTBALL MATCH

Over 200 people turned out on a hot and sunny day for the 1999 match between the Black Bull Old Codgers and Reeth Junior Giants. This was the first time the match had been played for the Kathryn Hopwood Memorial Trophy, which was kindly donated by Pawlicki Jewellers, Richmond.

The Old Codgers soon took the lead, thanks to an own goal by the Giants, but the lead was short lived with the Giants securing the trophy 10 - 7.

All proceeds and monies raised from the event are for Martin House Children's Hospice which this year is expected to exceed £1000.

The barbecue did a roaring trade, with Chef - de Cuisine Bald Brian Sedgewick raising over £100. Man of the Match awards went to Richard 'Arch' Archer and Lom Lowson. Rob Lowson and his guitar accompanist provided music. The referee was Father Ropey (Dave Lowson) and a fabulous contribution was when two Leeds United match tickets were auctioned for £70.

Thanks to all who supported and helped with this event.

Chris Jordan.

Thanks

Ann Forsyth would like to thank everyone for their cards and kind enquiries received during her recent illness.

Jill and Peter would like to thank everybody for all their gifts and making the day go so well.

Swaledale - Where's that ?

As the long hot summer quickly passes by one wonders where all the visitors have gone - the seaside or somewhere tropical - like Arkengarthdale as someone recently remarked. A new local radio station goes on air and it's pre-launch publicity totally ignores Swaledale. Recent articles in magazines and new walking books fail to acknowledge that Swaledale has its own Tourist Information Centre. Is it not time that Swaledale was acknowledged on postal addresses ? New road signs have sprouted up directing tourists to Wensleydale and Richmond but where's Swaledale ?



The Buck HOTEL

**Planning a Dinner, Reception
Anniversary, Reunion
Seminar ...?**

We have the largest Function
Room in Swaledale, with a
private bar, fresh home cooked
food to suit & compliment every
occasion & budget

To talk through how we can best
serve you, call Robert Stillion on
01748 884210

The Buck Hotel Reeth
North Yorkshire DL11 6SW

for all your

STATIONERY



*requirements
ask at
Reeth
Post Office
Tel: 884201*

*and support the suppliers who support
the "Reeth & District Gazette"
computer cartridges, paper, office
equipment, fax rolls, etc, etc
competitive prices, catalogues available
no minimum orders - delivered weekly
local contact for:*

Darlington Office Supplies and
Darlington Office Services
(Suppliers, Repairers, etc of most Office machines)

BMW : LAND ROVER : VOLVO : MAZDA : VAUXHALL

DORANT LTD CAR AGENTS



4x4's

- 98R FREELANDER 2.0 XEDi 5-door. Epsom Green, 25,000 miles... £17,995
- 96P VAUXHALL FRONTERA 2.2i 5-door Estate. Air con, FSH, Dark Green Metallic, 54,000 miles... £9995
- 96P RANGE ROVER 2.5 DSE Auto. FLRSH, Epsom Green, 49,000 miles... £26,995
- 96P DISCOVERY TDi 5-dr. FLRSH, sunroof, electric pack, Epsom Green, 25,000 miles... £15,995
- 96P DAIHATSU 2.8 FOURTRAK TDL Estate. SH, Blue Metallic, 38,000 miles... £10,995
- 96N RANGE ROVER 2.5 DT. S/roof, T/bar, Biarritz Blue, 44,000 miles... £20,995
- 95N DAIHATSU FOURTRAK FIELDMAN TDS. Side windows, Green Met, 53,000 miles... + VAT £7995
- 95N LADA NIVA 1.7 COSSACK. White, 34,000 miles... £3495
- 95N ISUZU TROOPER 3.1 TD Duty 3-door. FSH, Fir Green Metallic, 30,000 miles... £11,995
- 95M ISUZU TROOPER 3.2 LWB Auto CITATION. 7 seats, alloys, air con, FSH, Olive Green, 72,000 miles... £11,695
- 95M DISCOVERY 2.5 TDi S 7 seats. Alloys, FSH, Epsom Green, 58,000 miles... £12,495
- 94L DISCOVERY 2.5TDi Commercial. Elec pack, Black, 98,000 miles... + VAT £7495
- 93L DISCOVERY 2.5TDi 3-dr. Elec pack, Green... £8995
- 93L DISCOVERY TDiS 5-door. Alloys, 7 seats, 59,000 miles, Light Blue Metallic... £10,995
- 93K RANGE ROVER 3.9 VOGUE SE Auto. Air con, air susp etc, Grey Metallic, grey leather... £9495
- 91H DISCOVERY TDiS 5-dr. Alloys, 7 seats, sunroof, FSH, Terracotta Red Met... £8,295
- 91H ISUZU TROOPER 2.8 TD 5-dr Duty. Red... £6495
- 90G LANDROVER 110TD Hardtop. Green, PAS, one owner... + VAT £4995
- 85B LAND ROVER 90 Diesel County Station Wagon. 7 seats, Grey... £3495

CARS

- 96N ASTRA 1.7TD LS 5-dr. Blue, 33,000 miles... £5995
- 94L ROVER 620 SLi 4-dr. Air con, CD etc. Red Metallic... £4295
- 93L LEXUS GS 300 Auto. FLRSH, Silver Metallic, 83,000 miles... £13,995
- 92J VW PASSAT 1.8L 4-dr. White, 81,800 miles... £2695
- 89G TOYOTA MR2 GT. Leather trim, excellent original condition, FTSH, Red, 85,000 miles... £5495
- 88F GOLF GTi 3-dr. Alloys, sunroof, Black... £2695

*This is just a selection of Vehicles available
Please call with your requirements*

NEW & USED CARS SUPPLIED TO ORDER

**NEWGATE GARAGE,
BARNARD CASTLE**

Tel: (01833) 630620

Mon-Fri 8 am-7 pm. Sat 8 am-5 pm
Sunday 10.30 am. - 4.00 pm.

VAUXHALL : TOYOTA : HONDA : ROVER : BMW



Quality Ex-Hire Mountain Bikes
FOR SALE

Small & Medium Sizes
will suit ages 10/11 and up

Nearly New & Used Bikes
From £140

01748 826960

CUT PRICE FUEL

Supplied by DH FUELS

21 Byron Road, Chilton, Nr. Ferryhill, Co Durham

	Per 50kg Bag	Per Ton
COAL DOUBLES	\$4	£ 80
COBBLES	\$5	£100
COKE	\$5.75	£115
ANTHRACITE	\$7	£140

Phone Allan on **07788 848698**

WEEKLY DELIVERIES OR TELEPHONE
ORDERS AS REQUIRED

Coast to Coast

Door to Door Service

'We'll carry your pack so you don't have to'

For Further Details Contact

01642 489173 or Mobile 0802 358457

or write to

8 Althorp, Redcar, Cleveland
TS10 1NY

Baggage Services



Overlooking Arkle Town and the Dale

Bed & Breakfast - En-suite rooms
Optional evening meal - No Smoking
Angela Whitworth

Arkle Town Arkengarthdale
DL11 6RB

01748 884203

*South of Spain
ESTEPONA
Costa del Sol*

Holiday flat to rent with swimming pool,
tennis court, close to beach & Marina

For details please telephone 884781



The Kings Arms

SWALEDALE'S INN ON THE GREEN

REETH

open all day every day

We offer an appetising Lunch & Evening Menu
as well as Traditional Sunday Lunch.

Cask Conditioned & Guest Ales

Live Music Every Weekend

For details please telephone

01748 884259

ELECTRICAL & BUILDING CONTRACTOR

Rewiring, Sockets, Security Lighting, Repairs, Conversions, Alterations.

For a FREE ESTIMATE call

DJANGO: 01748 886053

LOW FAGGERGILL COTTAGE

Cosy holiday cottage on a Dales 'working' hill farm with 'breathtaking views' of Arkengarthdale - Sleeps 2
Ideal base for walking, biking and touring the Dales or simply enjoying a quiet holiday

Mrs. Gladys Atkinson
Low Faggergill Cottage Arkengarthdale
Richmond North Yorkshire DL11 6RS
01748 884550

PAUL HODGSON architectural services

plans, specifications, project management
Planning & Building Regulations approvals
modest fees - free initial consultation
Dales specialist - 30 years experience

tel & fax: (01748) 886568

Douglas Mairs & Sons
Established 1935
COAL MERCHANTS
WEST AUCKLAND
**Regular Deliveries
Throughout the
Dales Area**
We also supply large bags of DRY sticks
Competitive Prices
01388 833616 or 832884



Aromatherapy Reflexology & Massages

For information ring
Olga Ashton ITEC, IIHHT, MICT
Telephone **01748 826022**



As featured on 'Dales Diary'

*Come and see our fabulous range
of animal figures and wall plaques.
New designs for summer include
Hamsters, Hedgehogs and three
new wall plaques!*

FREE ENTRY TO WORKSHOP

Opening Times

*Monday - Friday 9am - 4pm
(production & shop sales)*

*Saturday 10am - 4pm
Sundays & Bank Holidays*

*11am - 4pm
(shop sales only)*

Orders by mail order are welcome



SUMMER OFFER

**FREE RABBIT or GUINEA-PIG
WORTH £2.99**

*When you spend £20 or more
from our selection of stock items.
This voucher must be presented to
claim your free model at the time
of sale and is valid between
1st August & 30th September*

Reeth Dales Centre, Silver Street, Reeth
Swaledale, North Yorkshire DL11 6SP
Telephone 01748 884498 Fax 01748 884334
e-mail: stefsmoels@talk21.com

Hillcrest Crafts
Derek J Harker
Wrought Ironsmith
Individually handmade
& finished wrought iron work
tel: 01748 884566



Interior, Hearth & Garden Furniture & Fixtures
Gates, Railings, Spiral Stair Kits & Balustrades
Security Grills & Pub Bar Fixtures
Lighting, Music Stands, Weather Vanes...
All products may be styled to your specifications
making each piece an original

Langthwaite Arkengarthdale Richmond DL11 6EH

HILLARY HOUSE Reeth

Family run Bed & Breakfast

1 Double - 1 Twin Room

Tea & Coffee making facilities

Colour TV

01748 884171

C Blodwell



REETH MARKET

Support YOUR Local Market

Every Friday 10 until 4

Fruit & Veg • Butcher

Jams & Preserves • Socks

Paperware (Household) & Toiletries

Crafts Stalls & Woodturning

Plants • Books

*A friendly market set against the
beautiful backdrop of
SWALEDALE*

For details call Elaine Johnson on
01748 884590



**LOGS - BAGGED
or PICK-UP LOAD**
Free delivery
locally or collect
by arrangement

John Hird - 01748 884380



SWALEDALE WOOLLENS

**OPEN
ALL YEAR**

British made and high quality were our
watchwords 25 years ago when Swaledale
Woollens was founded and the same is true
today - we still use the best of British wool
and the best of British knitters.

*Why not take a look for yourself and
visit our shop or our web site.*

You are also welcome to send for our colour brochure
and use our efficient worldwide mail order service.

Muker, Richmond, North Yorkshire DL11 6QG

Tel/Fax 01748 886251

or visit our Web Site:

www.yorkshirenet.co.uk/swaledalewoollens

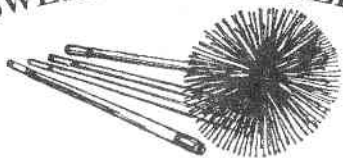
E-mail: woollens@swaledale.net

HOLIDAY COTTAGES WANTED

For our very successful letting service
based in Hawes. Let us market your
holiday cottage alongside the 100 other
properties we already have in Swaledale,
Wensleydale and Dentedale. Most achieve
30-40 weeks booked per year but we will
happily register cottages that are limited
by Council Tax rules to 20 weeks letting.
We also offer a complete holiday cottage
caretaking and management service.
**Inspection visits are without charge or
obligation. Call by or ring us or write to:**

COUNTRY COTTAGE HOLIDAYS
Dryden House, Market Place, Hawes
North Yorkshire DL8 3RA
Telephone 01969 667654

SWEEPIN' THE DALES



Take the worry and mess out of having your chimney swept. Call **Martin Tradewell**, the local expert and take advantage of the following:-

City & Guilds (7641) certificate in Chimney Cleaning (the only one in the area) • Fully insured • Clean, safe & thorough • Minimum disruption to your daily routine • Certificate of Cleaning issued (Highlighting any dangers, hazards or problems) 'Next Visit Due' reminder service

Martin Tradewell
NEW N° 01765 688299

QUIZ

E	R	I
M	S	A
T	L	N

See if you can make 150 or more, words of four letters using each letter only once. The letters also make a nine letter word, what is it? Small prize for the first longest and complete entry drawn.

Drop in your entry to the Post Office by **AUGUST 23rd**

Light Housekeeping help required (mornings) at Chapel Farm House Whaw. Phone Joyce for details 884062

The Ghyll

Bed & Breakfast

Arkle Town Arkengarthdale

Set in wonderful countryside, with spectacular views of Arkengarthdale. All bedrooms en-suite with colour TV.

For details contact Mrs. Sheila Good on 01748 884353 or Fax 01748 884015



Tan Hill Inn

Keld • nr Richmond • North Yorkshire

Britains Highest Inn 1732 ft ASL

Reeth 11 miles • Langthwaite 8 miles

Open all day • B&B en suite

Licensed to get married on the premises

Food lunchtimes & evenings

Theakstons & Various guest ales

Alec & Margaret Baines 01833 628246

LAIMAN STONES

LIME & DRYSTONE WALLING
BARN & HOUSE RESTORATION

Park Head Farm Arkengarthdale
Richmond DL11 6RR
Telephone 01748 884730

Colin Brown

Vacuum Chimney Sweep

Over 15 year's experience

All areas covered

01748 818497

Grass & Hedge Cutting Undertaken

Visiting or Walking in Arkengarthdale? Call in to

Chapel Farm TEA ROOM

Relax in 'the Zen-like calm' of Whaw, a tiny, remote hamlet 2 1/2 miles beyond Langthwaite off the Tan Hill road.

Many of Joyce's home-made dishes are from Grandmother's cook book - wholesome soups, generous open sandwiches, melt-in-the-mouth scones and delicious cakes - and complemented by Yorkshire Tea or fine coffee.

AFTER OPEN ALL WEEK 10 - 5pm
WEDNESDAY 1 - 5pm

Joyce Best

Chapel Farmhouse Whaw Arkengarthdale
Telephone 01748 884062

C.J. BEESTON Chartered Accountant

Personal Taxation
Accounts - Payroll - VAT
The Laurels, Reeth
Telephone & Fax
01748 884535



Little Angels

Day care for children 2 1/2 to 5 years
Waiting list now open

Open Tuesday Wednesday & Thursday
from August 17th

Arkle Cottage Reeth
01748 884542

Darlington & Stockton Times

'The Dalesman's Bible'

Swaledale & Arkengarthdale's complete weekly newspaper.

All your local news and sports plus readers' letters, What's On, Countryman's Diary, Past Times, Looking Back and much more.

Make sure of your copy by placing a regular order with your newsagent
45p - every Friday

Superb Holiday Cottage ARKENGARTHDALE

Quiet & Private location with excellent views

Sleeps 6 - Centrally Heated - Modernised & equipped to an extremely high standard
Available all year PLUS
Low season mini-breaks
Mrs. G. Stones 01748 884360

FACED WITH ANOTHER POWER CUT ? Don't despair, contact:



Diesel Generators
Wind & Solar Power
Inverters
Control Panels

**Specialists in
Alternative Energy Systems**
For specialist advice phone:
01748 886005 / 886377
Pager: 04325186529



YORKSHIRE DALES
National Park Authority

Information Centre - Reeth

Telephone 01748 884059

Your first place of call when visiting
Swaledale & Arkengarthdale

Summer Opening: (Easter - iNov) 10am - 5pm

Winter Opening: Sat & Sun 10am - 4pm



PUNCH BOWL INN **LOW ROW SWALEDALE**



Open all year

Warm, Friendly &
Informal

Bar Meals - Real Ales

160 Malt Whiskies

B&B en-suite

Family rooms

01748 886233

The **Copper Kettle** **Teashop**

& Licenced Restaurant

Reeth

01748 884748

One of the finest Teashops in Swaledale

FRESH AM

(formerly Yorkshire Dales Radio) now transmitting
to Richmond and the Dales on **1413 AM**

VISIT **Swaledale Folk Museum**



Open every day 10.30 to 5pm
until October 31st.

Contact the Curator

Mrs. D.J. Law 01748 884373



•BRIDGE TERRACE•

Bed & Breakfast in lovely 1890's village
house. Oceans of hot water, cotton
sheets, fresh flowers and lots of books.

Jenny Davies

2 Bridge Terrace Reeth

Richmond North Yorkshire DL11 6 TP

01748 884572

GRAHAM LORD **PROPERTY SERVICES** **HIGH ROW REETH**

Painting & Decorating
Tiling, Patios, Paths, Fencing,
Building repairs & maintenance

01748 884285 HOME

The Buck

**Delicious Traditional
Sunday Lunch ?**

THE BUCK HOTEL

REETH

01748 884210

REETH GARAGE Ltd.

Arkengarthdale Road, Reeth, Richmond
North Yorkshire DL11 6QT

**Why travel miles for your Fast
Fit requirements?**

- **New Tyres from £18**
- **3 Year Warranty Batteries
from £36.50**
- **Exhaust Systems
from £40.50**

Above prices include fitting & VAT
depending on make/model of car
Same day fitting from our extensive
stock or express delivery service for
next day.

**Free Collection & Delivery
Service in the Dales**

For more information contact:

Parts - David Chamberlain

Service & Parts - Peter Guy

(after hours 886350)

UNIPART



**CAR CARE
CENTRE**

**For all your motoring
needs**

SALES • SERVICE • SPARES

**Monday to Saturday
8am - 6pm**

01748 884243

ESTABLISHED OVER 60 YEARS

St. Mary's Church **Arkengarthdale** **Methodist Church**

**INVITE YOU TO A
GRAND
CAR BOOT SALE**

In aid of the Churches of
Arkengarthdale funds

Langthwaite
Arkengarthdale
Monday 30th August
From 10:30am

Light refreshments
available on the field

Have your own stall

The field will open to traders at
9:30am

and open to the public from
10:30am

£5 per stall/car

We regret that food or refreshment stalls
will not be acceptable

Enquiries to

Richard Good 01748 884353

Richard Birks 01748 884513

Afternoon Teas

In aid of St. Mary's Church

in the Methodist Church Hall

From 3pm

everybody welcome

DALESWAY DRIVING SCHOOL

CHRISTINE WHITEHEAD

DoT Approved Instructor

CATTERICK RICHMOND
SWALEDALE WENSLEYDALE

01969 623299

2 Church View, Bellerby
Leyburn DL8 5QC

Arkleside Hotel **Reeth**

Dorothy & Richard

*Welcome Non - Residents for
Private Dinner Parties*

Tel. 01748 884200

AROMATHERAPY REMEDIAL MASSAGE REIKI

Una Berry SP Dip. Clin. Arom. MISPA
Telephone 01748 884644

LOGS

*All hardwood ready to burn stocks
constantly available*

Large transit pickup loads delivered anywhere

Tel: 01274 566997 Mobile 0850 431518

Ask for Tony

WENSLEYDALE TREE & HORTICULTURAL SERVICES

**All tree, forestry and horticultural work undertaken
(INSURED)**

David Allen (HND Arboriculture)

Foss Garth, Thwaite, Nr. Richmond

North Yorkshire DL11 6DR

01748 886071



JAMES PEACOCK FOR YOUR COAL & SMOKELESS FUELS

Approved coal & Fuel merchants

Speedy & reliable deliveries of
solid fuels & oils throughout the
Swale & Arkengarthdale area

Telephone

01969 650465

Tony Sunter

Dry Stone Walling

Plastering &

other building work

Telephone 01748 884624

after 6pm

DEREK JOHNSON

**Your Local Handyman
Hill Side Arkengarthdale**

Garden Services

Grass Cutting

Paving Fencing

Painting &

Light Home Maintenance

01748 884590

Books

New Titles now in stock include:

RICHMONDSHIRE ARCHITECTURE

by Jane Hatcher

This comprehensive study of local
architecture has recently been reprinted in
paperback. (pb £25)

SWALEDALE WILLS AND INVENTORIES

1522 - 1600

edited by Elizabeth Berry

The wills and inventories presented here
afford a new look at the society and
economy of Swaledale in a period crucial to
the formation of modern society. (hb £48)

THE STORY OF THE YORKSHIRE DALES

by W R Mitchell

The Dales, that delight so many visitors have long
deserved a book like this. A very readable study of
the making of the landscape by nature and man,
covering the entire past of this part of the Pennines
(hb £17.99)

RURAL RESPONSES to Industrialisation

The North Yorkshire Pennines 1790 - 1914

(Wensleydale & Swaledale in the 19th Century)

by Christine Hallas

This fascinating book examines the changes
in the two Dales during a period of great
economic and industrial change. (pb £32)

**PLUS the latest Best-Sellers
and some new local Walks Books**

Now Available our
FREE Summer Reading Catalogue

Ordering Service Book Tokens

Sold & Exchanged

Reeth Post Office BookShop

Tel & Fax: 01748 884201

(Member Booksellers Association)

9am - 5.30pm Mon - Sat

NOW ALSO OPEN

10am - 5.30pm on Sundays

It's Good to Read

River Swale Regeneration Project Community Clear Up Weekend **7th & 8th August**

Can you and your family help to
remove plastic feed bags and silage
wrap from the riverbanks? If so,
why not join the fun with the
National Park Ranger Service who
will be clearing the footpaths in
Swaledale & Arkengarthdale.

Rangers will be ready to meet you at
10am at Reeth Green, Muker Car
Park and Langthwaite Car Park (bags
will be supplied.) Rubbish collected
will be disposed of in skips behind
the Dales Centre at Reeth. This
winter there will be a collection
point for plastic to be re-cycled, -
watch the press for details.

If you would like any further
details please contact Simon Lovel
(Project Manager) on 884060.

*This Project is being sponsored by
British Polythene Industries Plc and the
River Swale Regeneration Project*

Not a Hallucination but a sad reality in Reeth

I thought I saw a litter lout:

It turned my face a sickly green

I looked again and began to shout

At dogs soiling our Village Green

Don't dog 'lovers' care or realise

that filthy dog dirt is quite obscene

Anonymous

(But very concerned for responsible dog lovers)

Walter and Isobel Appleton

wish to thank everyone for their help and good
wishes when moving to 23 Langhorne Drive.
Also for the Cards and presents for Walter's
80th Birthday

MARKET PLACE

A Taste of Swaledale

½ or whole lambs available soon
Tel: 886412 / 886224 to order

- **Registered Child Minder** in Swaledale has vacancy. Tel: 825746
- **Licensed Trade** - flexible, self motivated mature Mbil, NLC, Food Hygiene Cert, HNC, for holiday, weekend, holding relief, call John on 884934 anytime
- **Vehicle Storage** available Tel: 884611
- **Womersley Famous Fruit & Herb Condiments** - an extensive selection of gourmet condiments used by discerning cooks and chefs. The range includes herbs and fruit flavoured jellies and condiments, preserves, chutneys and other exclusive delicacies - contact John on 884934, anytime.
- **Traditional Signwriter & Signmaker**: Rodney Teasdale - Tel: 886357
- **Cakes** - made to order Tel: Gladys Atkinson 884550
- **Manure Spreading** - very experienced contractor required to spread manure on 4 acres of undulating land in Low Row, when/if weather permits, Tel: 886291
- **Typing & Word-processing Service** - any work undertaken, reasonable rates, letters, reports, memoirs, theses, etc. Tel: 884089
- **Wiltshire Farm Foods** - the home meals service - for details and a free brochure call 01642 643999 - delivery day Wed.
- **Ram, Cow and Goat Horns wanted**, good prices paid. Tel: 886383
- **I have a large collection** of minerals on display, for sale and mail order. Contact M. Johnson Tel: 886376
- **Carpet Upholstery Cleaner** for Hire Tel: 884760
- **STAINTHORP'S** - Interior and Exterior Decorators. Tel: 01325 377829
- **Wanted** - Girls bike to suit 10 year old Tel: 884657
- **Wood Garage** - 17'6" long, 9' wide, up and over door 7' wide 6'6" high £50 Tel: 826283
- **Self Catering Hostel Accommodation** the Keld Centre Tel: 886559

- **Simon Andrew - Cabinet Maker**
Bespoke Furniture, Antique Restoration and Furniture repairs. Tel: 826706 (Day) 886453 (Eve)
- **Violin and Viola Lessons** - experience teacher just moved into area Tel: 884041

Antiques Restoration French Polishing, Wax & Oil Finishes, Traditional Upholstery - Collection & Delivery. Tel.: 01677 424793

SWALEDALE CATERERS

(Alison and Lisa)

for any special occasion we can provide fresh, tasty food at competitive prices
Tel: 886335 or 886434

Cakes for Occasions decorated to your design or ours, wedding cakes our speciality.
Phone 886239 or 886355 (evenings)

- **Learn to Play the Flute** - Tel Libby Gillon on 886276

WORD PROCESSING Don't need a full-time secretary but would like someone to handle your paperwork. Letters, reports, mail-shots, etc. If I can read your handwriting I'll type it for you. Rates negotiable Call Sue on 884244 / 884817 (ans phone)

- **Learn to Play the Double Bass** with Dominic Rivron Mus B (Hons) Double Bass, 'Cello, Bass and Folk Guitar tuition Music Theory (reading music, song-writing, Grade V, etc) Tel: 01969 624292
- **Piano Tuning** and repairs - John Hardcastle, Leyburn Tel: 01969 624965
- **Any wrought iron work**, interior or exterior, estimated price is guaranteed price. Tel: Stephen Calvert on 886577
- **Mushroom Compost** for Sale - 50p per bag - deliveries possible. Contact Hazel Oliver 01969 663179
- **Jack-of-all-Trades Handyman** - available for jobs around the home - Phone Martin on 01969 650785
- All your Stationery requirements can be supplied through Reeth PO tel: 884201

MARKET PLACE

- **Bakkus & Benofit** complete dog food for all types of dog, from £8.50 per 20kg bag. FREE delivery in the Dales. Phone Rod on 884286
- **Photocopying - Duplicating - and Laminating** available from the Reeth & District Gazette at Reeth Post Office
- **Alexander Technique** for underlying postural back, neck and joint problems. Gail Barlow AIL, DipM STAT Cert Nut for private appointments/courses Tel: 850553

LEONARD SCRAFTON Carpenter / Joiner
(City & Guilds) General Maintenance Tel: 824106

Home Sewing Service Curtains, Cushions, Loose Covers, Bedheads, Blinds, Bedspreads, Upholstery Reasonable Rates, Professional Standard, Free Estimates *Christine Long*
Tel: 825773 c/o Janet Sunter Tel: 884624

- **Do you need your holiday cottage** spring cleaned? Decorated? For the new season. Then we are the women to do it. Honest, reliable, local women, reasonable rates. Please ring 01969 667173 or 017683 72011 after 6pm

Comb & Cutter Sharpening / Bakkus & Benofit Dog Food Delivered to your door
P D Marsh (Rod) 884286 (mobile: 0401 000597)

- **Sheepskin Rugs** for sale - good selection of brown and white spotted Jacob rugs. Tel: 884572
- **BRIDGE GARAGE**, Reeth has selection of quality used cars. Call 884245 for details
- **For Sale** - 'L' Reg Fiat Tipo 1.4IE, 42K, elec windows, PAS, central locking, galv. Body, excellent condition, T & T £2650 ono Tel: 884306
- **Diahatsu Sportrak** - hard & soft top, fsh, 47000mls, stainless steel exhaust, T & T £4900 Tel/Fax 01969 650565
- **H Reg Peugeot 205 XLD 3 door hatch**, diesel, T&T, poa 884243
- **Trombone** For Sale - hardly used - offers Tel: 826722

Damsons Wanted for cash

any quantity considered, Buyer will pick - please contact Jane Davies on 884648 as soon as possible!

- **We'd love to stay** in your beautiful Dale but can't find anything to buy. We've been looking for ages for small, old property costing between £40 and £70 thousand in Reeth or surrounding area. If you can help us find somewhere please ring Doug on Leeds (0113) 2671187
- **Garage Sale** at Mill Stable, Arkengarthdale (opp CB) on Tues 10th Aug starting at 9am. Items include 2 pr skis and sticks (old fashioned bindings) various electric stoves etc (need checking by qualified electrician, saucepans, crockery, etc, all at giveaway prices)
- **Garage Sale** 0930 - 1330 29th Aug at Langhorne Lodge, Langhorne Drive - baby and childrens wear, toys, pots, Cds, videos, etc - all welcome

CAR BOOT SALE

Parks Field, Grinton

9am Sun 29th Aug

In aid of Dales Cricket Club Tel: 884370

CAR BOOT SALE

at Langthwaite

Monday 30th Aug from 10.30am

In aid of the Churches of Arkengarthdale

MORE DAIRY DATES

August:

- 10th Places Available on the Arkengarthdale Jubilee Club coach trip to Heimsley. For cost and time call Shirley Gale 884779 or Ann Wright 884652
- 30th Afternoon teas served from 3pm in the Methodist Church Hall Arkengarthdale in aid of St Mary's Church.

September:

- 13th Northallerton & District Community Health Council Meeting, Aysgarth Village Hall 2.15pm - a public meeting so that members of the public can talk with them about any issues around healthcare which are causing problems. There will also be a presentation on the "NHS Direct" service which will be available in North Yorkshire within the next two years.

DIARY DATES - all entries are FREE - call 884201

AUGUST

- 1st Reeth Brass Band Concert, Reeth Green 3pm
 2nd Illustrated Talk Fremington Sunday School 8pm - Ken Biggs "Where the Curlew Call."
 2nd - 6th Football Coaching Gunnerside School Tel: 886434 for details
 2nd Netball Coaching Gunnerside School Tel: 886434 for details
 3rd Bingo at the Buck
 4th Guided Walk with Lawrence Barker - Old Gangs and Mills - meet Surrender Bridge 2pm
 4th Netball Coaching at Gunnerside School Tel: 886434 for details
 4th Pantry Shelf Reeth Methodist Schoolroom 2pm
 6th Songs of Praise with local Bands Reeth Methodist Church 7.30pm
 7th Reeth Manse Open Day
 7th His & Hers Evening Gunnerside Village Hall 7.30pm Tel: 886363/886261
 7th & 8th Community Clear Up Weekend - see advert or Tel: 884060 for details
 9th Illustrated Talk Fremington Sunday School 8pm - Peter Gibson OBE "A Millennium Celebration of 1000 years in Stained Glass."
 9th Closing date for entries to Reeth Show
 11th Pantry Shelf Reeth Methodist Schoolroom 2pm
 13th Reeth YFC Cake Stall Reeth Market
 13th Son Et Lumiere - a feast of history re-enacted at Bolton Castle 7pm - 11pm Tel: 01969 623981
 16th Illustrated Talk Fremington Sunday School 8pm - Marjorie Daniels "Swaledale Tales"
 17th Bingo at the Buck
 18th Guided Walk with Lawrence Barker - The Grinton Mines & Mills - meet Grinton YHA 2pm
 18th Pantry Shelf Reeth Methodist Schoolroom 2pm
 20th "A Lead Mining Miscellany" with Dave Carlisle, 7.30pm Arkengarthdale Methodist Church.
 21st Produce Stall outside Holy Trinity Church, Low Row 10am - 12noon
 21st Open Day - Fremington Sunday School - Border Collie Rescue Society 10am - 4pm. Problem dogs assessed by appointment Tel: 850025
 21st Closing Date for entries to Muker Show
 22nd Swaledale Darts League AGM 8pm Buck Hotel, Reeth
 23rd DEADLINE Date for Sept Issue
 23rd Illustrated Talk Fremington Sunday School 8pm - Major FTC Williams "Splendid Churches of The Dales"

- 23rd Reeth PC Meeting 7pm Memorial Hall
 25th REETH SHOW - for details Tel: 884247
 27th Swaledale Walking Guides - Gunnerside Gill Walk, meet Punch Bowl, Low Row 11am.
 28th Wensleydale Show
 29th Reeth YFC v Presidents Cricket Match, Reeth Athletics Field 2pm
 29th Guided Walk with Paul Denning - Reeth Summer Circuit - meet Burgoyne Hotel, Reeth 10.30am
 29th Dales Cricket Club Car Boot Sale Parks Field, Grinton. Details Tel: 884370
 29th Muker Silver Band Concert, Muker Square 3pm
 30th Reeth Sports
 30th Gunnerside WI Coffee Morning, Gunnerside Village Hall from 10am
 30th Car Boot Sale, Langthwaite
 30th Arkengarthdale Methodist Church Afternoon Teas
 30th Illustrated Talk Fremington Sunday School 8pm - Dave Weedon "The Yorkshire Dales in 3D"
 31st Bingo at the Buck

SEPTEMBER

- 1st MUKER SHOW - for details Tel: 886330
 1st YDNP Guided Walk - Kidson: The Classic Circular, meet Farmers Arms, Muker 11am
 3rd Barbecue & Live Music, CB Inn in aid of Friends of Arkengarthdale School
 4, 5th & 11th - 18th Ripon Festival. Tel 01765 604625
 5th Guided Walk with Roger Pettican - Shaw Beck and Prys Level - meet Marske Bridge 2pm
 6th Dales Ladies 7.30pm Reeth Memorial Hall
 6th Illustrated Talk Fremington Sunday School 8pm - last for the 1999 season - Lawrence Barker "A Brief History of Swaledale and Arkengarthdale."
 7th Arkengarthdale PC Meeting
 12th Marrick Show and Open Clay Pigeon Shoot
 12th Hardraw Brass Band Competition
 14th Bingo at the Buck - start of Autumn season.
 16th Reeth & District Sports AGM, Reeth Memorial Hall 7.30pm
 17th Gardeners Question Time with Geoffrey Smith at Wensleydale School, Leyburn 7.30pm in aid of the "Northdale Appeal" Tel: 01969 622172
 19th Reeth School Open Afternoon
 19th Charity Football Match - Gunnerside FC v Kings Head Golden Oldies, 1pm Gunnerside School
 21st Dales Ladies visit to James Herriott Centre, Thirsk. Tel: 884113

DIARY DATES - all entries are FREE - call 884201

- 25th Open Day - Fremington Sunday School - Border Collie Rescue Society 10am - 4pm. Problem dogs assessed by appointment Tel: 850025

OCTOBER

- 12th Upper Swaledale & Arkengarthdale Bussiness Assoc AGM
 16th "Meantime" a new North Country Theatre presentation, Reeth Memorial Hall Tel: 884201
 23rd Gala Concert by Muker Silver Band and the Swale Singers in aid of Keld Public Hall
 23rd Open Day - Fremington Sunday School - Border Collie Rescue Society 10am - 4pm. Problem dogs assessed by appointment Tel: 850025

NOVEMBER

- 13th Open Day - Fremington Sunday School - Border Collie Rescue Society 10am - 4pm. Problem dogs assessed by appointment Tel: 850025
 26th Reeth Christmas Shopping Evening for details Tel: 884188

APRIL 2000

- 8th "Messiah" a special performance for the Millennium in Reeth Methodist Church by the combined choirs of Upper Swaledale and Upper Wensleydale

JULY 2000

- 1st Muker Millennium Party - Show Field

1999 Mobile Library Visits

Route 3

(Downholme, Grinton, Marrick, Marske)

WEDS: 18th Aug, 8th Sept

Route 7

(Fremington, Reeth, Langthwaite, Whaw)

TUES: 3rd & 24th Aug, 14th Sept

Route 9

(Healaugh, Gunnerside, Low Row, Harkerside)

THURS: 5th & 26th Aug; 16th Sept

Route 13

(Westonesdale, Keld, Thwaite, Muker)

WEDS: 11th Aug, 1st & 22nd Sept

This information was correct at the time of printing.
 The staff on the Mobile Library will be happy to help with any queries or Tel: 01609 776192

RICHMONDSHIRE MOBILE VOLUNTEER BUREAU

follows the Library Van and routes and visits Reeth every third Friday, (13th Aug; 3rd Sept) for full details Tel: 822335

Richmondshire District Council ENVIRONMENT

to facilitate Bank Holidays the following are the Revised Collection dates for Aug/Sept Refuse must be presented in its usual location for collection on those dates:

Normal Collection:	Revised Collection:
Mon 30 Aug	Tues 31 Aug
Tues 31 Aug	Wed 1 Sept
Wed 1 Sept	Thurs 2 Sept
Thurs 2 Sept	Fri 3 Sept
Fri 3 Sept	Sat 4 Sept

For further information please Tel: 829110

ELITE CINEMA

at LEYBURN

(Tel: 01969 624488)

AUGUST Film Programme

- 5th at 5pm & 8pm
 "Waking Ned" (PG)
 6th at 5.30pm only and
 7th at 3pm & 5.30pm
 "The King & I" (U) a new cartoon
 6th & 7th at 8pm only
 "The Debt Collector" (18)
 12th - 14th at 5pm & 8pm
 "Tea with Mussolini" (PG)
 19th at 5pm & 8pm
 "Besieged" (PG)
 20th & 21st at 5pm & 8pm
 "Rouge Trader" (15)
 26th - 28th at 5pm & 8pm
 "The Mummy" (12)

Advance Bookings Available

Box Office Open 2pm - 10pm Thurs - Sat

Gunnerside Friday Club

2nd to 6th Aug Football Coaching 10am - 4pm
 2nd & 4th Aug Netball Coaching 10am - 4pm
 at Gunnerside School with qualified instructors.
 Details: Tel: 886434 or 886335

BOLTON CASTLE 600

Son et Lumiere

Friday 13th August 7pm - 11pm

A "Feast of History" from the 14th to 17th century.

PREPARATIONS GATHER PACE

Some 150 re-enactors will progress through the centuries, accompanied by music, dance, peace, civil wars, pestilence and disease, domesticity and beheadings!

The preliminaries will start in and around the Castle at 7pm with Jesters, Minstrels, Beggars, Whores and Thieves.

The *Son et Lumiere* performance will begin at 9.30pm. Performers will include the Knights of Ashbournes, "Trouvere" medical musicians, Living History staff from Danelaw Village near York. The performance will culminate in a re-enactment of the siege and storming of the Castle during the Civil War by the Sealed Knot.

People may bring their own picnics, but refreshments will also be available on site. They should bring their own seating and warm clothing.

The *Son et Lumiere* is to celebrate the 600th anniversary of the completion of the Castle in 1399, which took 20 years to build at a cost of 18,000 marks (approximately £70 million in today's money!)

TICKETS ARE NOW ON SALE

Tickets must be bought in advance. These are priced at £12 each and are available from Bolton Castle Tel: 01969 623981

Richmondshire Subscription Concerts

25th September Georgian Theatre, Richmond

Duo: Miranda Dale (violin)
and Esther Geldard viola)

16th October Georgian Theatre Richmond

The Lude Piano Trio

20th November Georgian Theatre Richmond

Goli Mohtadi (piano) (KPMG/Martin Musical
Scholarship Fund)

Further details: Tel: 01325 718368

North Country Theatre proudly present

MEAN-TIME

devised under the direction of Nobby Dimon

"A Tale of High Seas Adventure & Low
Political Intrigue"

Reeth Memorial Hall

Sat 16th October at 7.30pm

Book early to avoid disappointment - Tickets:

£6 (£3.50 under 16) from Reeth PO Tel: 884201

NORTHDALE HORTICULTURE

invites you to

A *Gardeners Questiontime* with

Geoffrey Smith of TV Fame

and *Jim Cartmen* of the Nurseries Aiskew

Wensleydale School, Leyburn

7.30pm Friday 17th Sept

Wine & Savories, Raffle, Tombola,

Bulbs and plants for sale.

Tickets £5 (strictly limited) available from:

Elizabeth Bradley Tel: 01969 622172

MacFarlane's Newsagents, Leyburn

Northdale Horticulture Tel: 01609 770269

Richmond School Music Tour 2000

AMERICAN QUIZ

Collect your entry from numerous local outlets,
Bottom Shop, village shops, Post Offices, etc.

Entry £1 - first all correct sheet drawn wins the
American themed hamper.

Marrick Show

has been postponed to Sunday 12th Sept.
and will include an Open Clay Pigeon Shoot

Arkengarthdale Methodist Church

"A Lead Mining" Miscellany"

with Dave Carlisle

7.30pm Friday 20th August

firstly (in costume!) "A day in the life of a Victorian
Mining Agent" and secondly "Faggergill Mine" this
is to be accompanied by photographic slides.

Admission: £2.50 (payable at the door)

Light refreshments will be served.

CHURCH SERVICES

in ARKENGARTHDALE and SWALEDALE

1st August

- 9.15am St Mary's Muker *Eucharist*
10.30am Gunnerside Methodist
Communion
Low Row URC
Reeth Methodist *Family Service*
11.00am Reeth Congregational
St Edmund's Marske *Eucharist*
Holy Trinity Low Row *Eucharist*
2.00pm Keld Methodist
2.30pm Low Row Methodist *Communion*
6.00pm St Andrew's Grinton
Evening Prayer
6.30pm Arkengarthdale Methodist
Muker Methodist
Reeth Congregational
Reeth Methodist

8th August

- 9.30am St Andrew's Grinton *Eucharist*
St Michael's Downholme
Holy Eucharist
10.30am Low Row URC
Reeth Methodist *Communion*
11.00am Reeth Congregational
St Edmund's Marske
Morning Prayer
11.15am St Mary's Arkengarthdale
Holy Communion BCP
2.30pm Low Row Methodist
4.00pm St Mary's Muker
Holy Communion BCP
6.30pm Arkengarthdale Methodist
Communion
Gunnerside Methodist
Marske Methodist
Muker Methodist
Reeth Congregational
Reeth Methodist

15th August

- 9.00am Keld URC
9.15am St Mary's Muker *Eucharist*
10.30am Low Row URC
Reeth Methodist
11.00am Holy Trinity Low Row *Eucharist*

15th August (continued)

- 11.00am Reeth Congregational
St Edmund's Marske *Eucharist*
3.00pm Hurst Methodist
6.30pm St Mary's Arkengarthdale
Evensong BCP
Reeth Congregational
Reeth Methodist

22nd August

- 8.00am Holy Trinity Low Row
Holy Communion BCP
9.00am Keld URC
9.30am St Andrew's Grinton *Eucharist*
St Michael's Downholme
Holy Eucharist
10.30am Low Row URC
Reeth Methodist
11.00am Reeth Congregational
St Edmund's Marske
Family Eucharist
11.15am St Mary's Arkengarthdale
Holy Communion BCP
2.30pm Low Row Methodist *Communion*
6.30pm Arkengarthdale Methodist
Gunnerside Methodist
Marske Methodist
Muker Methodist
Reeth Congregational
Reeth Methodist

29th August

- 10.30am St Mary's Arkengarthdale
United Parish Eucharist
Low Row URC
Reeth Methodist
11.00am Reeth Congregational
St Edmund's Marske *Eucharist*
2.00pm Keld Methodist
2.30pm Low Row Methodist
6.30pm Arkengarthdale Methodist
Gunnerside Methodist
Marske Methodist
Muker Methodist
Reeth Congregational
Reeth Methodist

Shades of Heather

Workshop dates for Summer 1999

Aug:	3 rd , 11 th , 17 th , 20 th , 5 th	Rug Making Dyeing
Sept:	3 rd , 10 th , 17 th , 24 th , 17 th	Rug making Dyeing
Times: 10.30am - 3.30pm Tues, Wed, Fri & Sat		
Sat 10.30am - 12.30pm - mini workshop surgeries		
Children's Sat afternoons - 2pm - 4pm		
Full Details Tel: 884435		

Northern Spirit DALES RAILCARD

residents within certain areas, which includes the DL11 postcode area are entitled to purchase a DALES RAILCARD for use of the Settle-Carlisle Line. The cards costs £10 per year and entitles the holder to 1/2 off the cost of local rail fares every time you travel, and up to 2 children can go with you for only £2 each.

DALES RAILCARDS are now available at your local POST OFFICE

SUNDAY BUS SERVICES

Keighley & District are again operating Sunday services:

807	Hawes Stat Yd	1120	1500
	Keld	1150	1530
	Muker	1200	1540
	Gunnarside	1210	1550
	Reeth	1220	1600
	Castle Bolton	1240	1620
	Aysgarth Falls	1250	1630
	Hawes Stat Yd	1315	1655

(connections with to Ribbleshead)

803	Leyburn Mkt Pl	1140	Hawes Mkt Pl	1655
	Reeth	1200	Muker	1730
	Gunnarside	1215	Gunnarside	1740
	Muker	1220	Reeth	1755
	Hawes Mkt Pl	1250	Leyburn Mkt Pl	1820

(connections to Harrogate via Masham & Ripon)

for comprehensive details of Bus Services around the Yorkshire Dales and Train Times for the Settle-Carlisle collect a **FREE** copy of "Getting Around - the Yorkshire Dales" from many local outlets and all Tourist Information & National Park Centres

GOING ON HOLIDAY ?

Ask at your local Post Office about their **TRAVEL SERVICES** - Foreign Currency, Travel Insurance, etc. 0% Commission on Tuesdays during August

COMMUNITY EDUCATION

Autumn Term

There are many Courses on numerous subjects starting in the Autumn for further details contact Richmond & Swaledale Community Education
Tel: 850171

(Prospectus due to be published mid August and will be available for many local venues.)

Askham Bryan College

Bedale Centre Tel: 01677 422344

(Prospectus now available from some local venues)

Wensleydale School Tel: 01969 622244

Craven College (some Courses are held at Askrigg)

Tel: 01756 791411

Darlington College at Catterick Tel: 836449

W.E.A. Tel: 884652

EAST WINDY HALL - REETH

'Out of this Earth'

a mixed-media Exhibition

Sat 29th Aug - Sun 5th Sept

Open daily 11am - 5pm; Sundays 2pm - 5pm

Admission **FREE**

featuring:

Jane Davies - Pottery

Ray Davies - Pottery

Sue Simpson - Lettering

Colin Swinton - Painting

Joy Bentley - Painting and Sculpture

East Windy Hall, Arkengarthdale Road, Reeth

Tel: 884316

Gunnarside Millennium Committee

His and Hers Evening

Saturday 7th August

7.30pm Gunnarside Village hall

Featuring a Baking Competition for Men. Male bakers wishing to enter the competition should ring 886220 for a copy of the set recipe, and bake it beforehand.

The evening will also include fun and games to challenge gender stereotyping.

Tickets £3.50 (includes wine and cheese)

from the Village Shop Tel: 886363 and

the King's Head Tel: 886261

Donations of cakes (made by men or women) will be welcomed for a cake auction during the evening

Swaledale - Bus Times - Arkengarthdale

Richmond - **SWALEDALE** - (Hawes TUES only) - (Leyburn FRI only) Routes: 30, 30A, 36, 130, 522

(W/E 8.8.99)	*30	30	30	*30	30	30	36	30	30A	30	30A	30
			M-Th			Fr	Fr	Sa	Sa	Sa	Sa	Sa
*School Holiday Times												
RICHMOND Mkt. Pl.	0710	0910	1310	*1545	1740	2240		0730	0955	1140	1410	1540
Whitcliffe Place	0713	0913	1313	1548	1743	2243		0733	0958	1143	1413	1543
(Sa) Marske (via Hurst/Washfold Crossroads 1432 & Marrick 1437)												
LEYBURN Mkt. Pl.							1309					
Bellerby Cross Keys							1314					
Downholme							1324					
Grinton	0732	0932	1332	1611	1802	2302	1332	0752	1017	1202		1602
REETH	0734	0934	1334	1614	1804	2304	1334	0754	1019	1204	1447	1604
Arkle Town									1025			1452
Langthwaite									1026			1453
Whaw Road Ends									1030			1457
Healaugh	0738	0938	1338	1618	1807	2307	1338	0758		1208		1606
Low Row	0745	0945	1345	1626	1815	2315	1345	0805		1215		1615
GUNNERSIDE Bdge	0755	0955	1355	1630	1825	2325	1355	0815		1225		1625
Muker Farmer's Arms		1006	1406				1406	0826		1236		1636
Thwaite		1010	1410				1410	0830		1240		1640
KELD Tan Hill Rd. End	1019	1419					1419	0839		1249		1649

Keld Tan Hill R/E	1007	1423										
Thwaite	1015	1428										
HAWES Mkt. Pl.	1033	1446										
HAWES Mkt. Pl.	0940	1400										
Thwaite	1000	1418										
Keld Tan Hill R/E	1007	1423										

(Service 130 - Hawes Connection - runs on Tuesdays only and is operated by "Braithwaites" of Sedbergh who also provide connections to Sedbergh and Kendal Service 112)

KELD Tan Hill Rd End		1025	1425				1025	0840		1250		1650
Thwaite		1034	1434				1034	0849		1259		1659
Muker Farmer's Arms		1038	1438				1038	0853		1303		1703
GUNNERSIDE Bdge	0755	1049	1449	*1635	1825		1049	0904		1314		1714
Low Row	0805	1059	1459	1639	1835		1059	0914		1324		1724
Healaugh	0809	1107	1507	1646	1843		1107	0922		1332		1732
Whaw Road Ends									1030		1459	
Langthwaite									1034		1503	
Arkle Town									1035		1504	
REETH	0811	1110	1510	1650	1846		1110	0925	1041	1335	1510	1735
Grinton	0814	1112	1512	1653	1848		1112	0927		1337	1512	1737
Downholme							1122					
Bellerby Cross Keys							1130					
LEYBURN Mkt. Pl.							1135					

(Sa) Marske (via Marrick 1051 & Hurst/Washfold Crossroads 1056)

Whitcliffe Place	0830	1131	1531	1712	1907			0946	1115	1356	1531	1756
RICHMOND Mkt. Pl.	0840	1134	1534	1715	1910			0949	1120	1359	1534	1759
Richmond Schools	0850					(SD only)						

*SD - School days; M-Th - Mon to Thurs; Tu - Tuesdays only; Fr - Fridays only; Sa - Saturdays only; No Service Sundays or Bank Holidays

(*NB - this Service 30 becomes **Service 522** operated by Abbots of Leeming during school term time)

All services are supported by North Yorkshire County Council. ARRIVA also provide connections to Darlington

Services 30, 30A & 36 are operated by **ARRIVA** (ARRIVA Travel Enquiry Line Tel: 0345 124125)

ARKENGARTHDALE

Malcolm Terry (Harkers Coaches) operates a request service to link with ALL Swaledale Services -

Please Tel: 01748 884533 daily to confirm your requirements.