

## THE BOTTOM SHOP of REETH

General Store & Newsagency open seven days a week

GROCERIES LOCAL PRODUCE FROZEN FOODS ICE CREAM CARDS

HOME COOKED HAM - VIDEO RENTAL now available & much more...

Contact Elsie & William Whitehead on 01748 884552

### STEPHEN STUBBS

ELECTRICAL CONTRACTOR

Rewires, Extractors  
Security Lighting/Alarms  
Showers, Storage Heaters  
House Inspections etc...

Tel: 01748 884686

Fax: 01748 884139

**FREE ESTIMATES**



Approved



### CLOCK WORKS

Clocks & Barometers  
Repaired, Cleaned,  
Serviced & Restored

**Ian Whitworth**

Reeth Dales Centre  
Reeth Swaledale  
Nr. Yorkshire DL11 6SP

☎ 01748 884088

Member of The British Watch & Clock Makers Guild

### Arkengarthdale RED LION INN

Free House • Real Ales  
Bar Meals & Snacks available all year round

☎ 01748 884218

### DAVID E. LLOYD

Chartered Builders

New Building - Restoration

Alterations - Extensions

Construction - Maintenance & Repairs

The Gables, Healaugh, Richmond DL11 6TZ ☎ 01748 884315

### NORMAN F. BROWN

Chartered Surveyors Auctioneers Valuers Estate Agents

We have a wide range of properties for sale in Swaledale and the  
surrounding areas. Specialist Letting Department.

RICS Homebuyers Surveys, Valuations for all purposes.

#### Offices

14 Queens Road, Richmond, N. Yorks. DL10 4AG ☎ 01748 822473

6 Bridge Street Bedale, N. Yorks. DL8 2AD ☎ 01677 42282

25 Market Place, Leyburn, N. Yorks. DL8 5AS ☎ 01969 622194

### REETH POST OFFICE & SHOP

Bookseller - Stationers - Greetings Cards

Open all day Monday - Saturday 9am to 5.30pm

Telephone & Fax 01748 884201

*"More than just a Post Office"*

### THERE IS ONLY ONE

### WHITE HOUSE

ANVIL SQUARE REETH

01748 884763

### J.E.HIRD

MOBILE BUTCHER

Prime quality fresh & cooked meat  
groceries. Weekly local visits  
& Reeth Friday Market

☎ 017683 71709

### M. GUY • PLUMBING

For all your  
plumbing requirements  
21 Laburnum Grove  
Richmond

☎ 01748 825640

### TREVOR J HIRD

ELECTRICAL CONTRACTOR

No job too small • **FREE** estimates

Reduced rates for senior citizens

Telephone: 886886

# REETH & DISTRICT GAZETTE

Issue N°43

FEBRUARY 1999

Published 1st FEBRUARY 1999



The Local News Magazine for Swaledale & Arkengarthdale

**Douglas Mairs & Sons**  
 Established  
**1935**  
**COAL MERCHANTS**  
**WEST AUCKLAND**  
**Regular Deliveries**  
**Throughout the**  
**Dales Area**  
**Competitive Prices**  
 Telephone  
**01388 833616 or 832884**

**LOW FAGGERGILL COTTAGE**

Cosy holiday cottage on a Dales 'working' hill farm with breathtaking views of Arkengarthdale - Sleeps 2  
 Ideal base for walking, biking and touring the Dales or simply enjoying a quiet holiday

Mrs. Gladys Atkinson  
 Low Faggergill Cottage Arkengarthdale  
 Richmond North Yorkshire DL11 6RS  
 01748 884550



**B E N C H M A R K**  
 Corporate Graphics & Graphic Design

Benchmark specialises in the design & layout of leaflets and brochures, business cards & stationery, signage & logos, packaging design & labels, advertisement design  
*(most of the advertisements in the Gazette are designed by Benchmark).*

We also can organise special photography & illustration as well as the organisation & supervision of printing.

For a free consultation and estimates call  
**Richard G Birks**  
 Telephone 01748 884513



*Come & see our team at work making our famous range of animal figures & wall plaques, which includes a wildlife section. Select your pet from among our collection & have it hand crafted & painted to order at a reasonable cost.*

**FREE ENTRY TO WORKSHOP**

*Opening Times*

**Monday - Friday 9am - 4pm**

*Orders by mail order are welcome*

Reeth Dales Centre, Silver Street, Reeth  
 Swaledale, North Yorkshire DL11 6SP  
 Telephone 01748 884498 Fax 01748 884334

**PAUL HODGSON**  
 architectural services

plans, specifications, project management  
 Planning & Building Regulations approvals  
 modest fees - free initial consultation  
 Dales specialist - 30 years experience

tel & fax: (01748) 886568

**WELBURY PRESS**

Welbury Press offer a high quality local off-set & letter-press printing service, for competitively priced one to four colour printing jobs - small business, hotel, B&B and holiday cottage leaflets letterheads and visiting cards. Every job is handled with care and accuracy as well as respecting the tightest of deadlines. PC and Mac jobs handled. Please feel welcome to contact Lee Storey with any enquiry you may have  
 01748 823247

**REETH LITERARY TRUST**

Financial Help

Limited grants are available from the Reeth Literary Trust for voluntary bodies working for the interest of social welfare and education with the object of improving life within the township of Reeth.

Applications are invited to the Trust, at Helmsgarth, Reeth by  
 February 15<sup>th</sup> 1999.

A financial statement must accompany any application.

**COVER PICTURE**

*by Matthew Frankland*



**ANNUAL GENERAL MEETING**

Reeth Memorial Hall  
 7.30pm Friday 5<sup>th</sup> February

*Annual*

**WHIST / DOMINO**  
**DRIVE & DRAW**

*on*

7.30pm Friday 5<sup>th</sup> March  
**REETH MEMORIAL HALL**

Good Prizes

Refreshments

**REETH & DISTRICT GAZETTE**

**FEBRUARY 1999 Issue:**

Where there's smoke - there's fire  
 While shepherds watched their flocks  
 On the Death of John Griffin Owen  
 Settle - Carlisle 10<sup>th</sup> Anniversary Express  
 Grinton Parish - including  
 Melbecks and Muker  
 The Amblers Winter Quiz  
 National Park News  
 Diary Dates, Church Services  
 Market Place, Bus Timetable  
 Local News and Parish Council Reports

*This months contributors included:*

*Gillian Bobbett, Jocelyn M Campbell, Martin Dower, Elaine Johnson, Rod Hall, Hedi Collins, Marjorie Longstaff, Hannah Merryweather, Marjorie Daniels, Peter Brant, Matthew Frankland, and Richard Birks.*

The Gazette is printed and published by volunteers and distributed locally free of charge. Visitors to the area who enjoy the publication are invited to contribute to local good causes.

An Annual Subscription facility is available to readers from outside the two Dales.

**REETH & DISTRICT GAZETTE**

No material may be reproduced in whole or in part without permission. Whilst every effort is taken, the publishers cannot be held legally responsible for any errors in Articles, Listings or Advertisements.

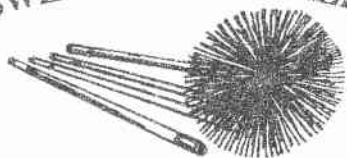
Printed and Published by the  
 Reeth & District Gazette

c/o The Post Office, Reeth, DL11 6SE  
 Tel & Fax: 01748 884201

**LETTERS**

We welcome letters on all subjects which should be addressed to the Editor, Reeth & District Gazette, c/o The Post Office, Reeth, DL11 6SE. Correspondents should include their full name and address

## SWEEPIN' THE DALES



Take the worry and mess out of having your chimney swept  
Call **Martin Tradewell**, the local expert and take advantage of the following:-

City & Guilds (7641) certificate in Chimney Clearing (the only one in the area) • Fully insured • Clean, safe & thorough • Minimum disruption to your daily routine • Certificate of Cleaning issued (Highlighting any dangers, hazards or problems)  
'Next Visit Due' reminder service

**Martin Tradewell**  
**NEW N° 01765 688299**

## GRAHAM LORD

PROPERTY SERVICES  
HIGH ROW REETH

Painting & Decorating  
Tiling, Patios, Paths, Fencing,  
Building repairs & maintenance

01748 884285 HOME

## CENTRAL DALES JOINERY

Unit 4, Dales Centre, Silver Street, Reeth  
Telephone 884117 or 01969 650438

*Now Open for Business*

*Gates, Fencing, Patio & Garden  
Furniture, Doors, Windows  
Various Wooden Toys, Plus all  
aspects of joinery*

## The Chyll

Bed & Breakfast

Arkle Town Arkengarthdale

Set in wonderful countryside,  
with spectacular views of Arkengarthdale  
All bedrooms en-suite with colour TV.

For details contact Mrs. Sheila Good  
on 01748 884353 or Fax 01748 884015



## Tan Hill Inn

Keld • nr Richmond • North Yorkshire

Britains Highest Inn 1732 ft ASL

Reeth 11 miles • Langthwaite 8 miles

Open all day • B&B en suite

Licensed to get married on the premises

Food lunchtimes & evenings

Theakstons & Various guest ales

Alec & Margaret Baines 01833 628246

## LAIDMAN STONES

LIME & DRYSTONE WALLING  
BARN & HOUSE RESTORATION

Park Head Farm Arkengarthdale  
Richmond DL11 6RR  
Telephone 01748 884730

## Colin Brown

Vacuum Chimney Sweep

Over 15 year's  
experience

All areas covered

**01748 818497**

Grass & Hedge Cutting Undertaken



## Parish Council News

**Arkengarthdale** Mrs Julie Sykes of English Nature attended the meeting to explain the tree planting and fencing project in Punchard Gill. All who helped with the Christmas Lights and Children's Party were thanked. There is to be a site meeting with YDNP to discuss repairs to High Green, Langthwaite. NYCC are to be asked to provide salt bins on Raw Bank and at Watson House.

Next Meeting 2<sup>nd</sup> March

**Grinton** concern was expressed that Stainton Lane is apparently not gritted early on a morning when many people use it to leave the Dale. A site meeting is to be organised to discuss safety fencing on the moor road. Problems with vehicles parking outside the Church on the Harkerside junction are to be discussed. Street Lighting - two new street lights are to be included in next year's budget by the District Council.

Parish hall - phase 1 of the project has been completed but delayed payment by the Millennium Trust has incurred interest on the outstanding debt.

Millennium - a photographic archive of the Parish is to be produced and a quote is being obtained for a presentation plaque for the children in the parish.

**Reeth** Millennium Project - the Council's project is to re-cobble the area of the Green currently used by the Market. EEC funding has already been agreed subject to other funding, the results of which are still awaited. When completed an alternative site will need to be sought for the Bonfire. In any case current legislation and rulings from the Health and Safety Executive may in future prohibit such a bonfire especially as requests to restrict toxic waste being placed on the bonfire are continually ignored.

Planning - concern was expressed at the need for the Scott Trial to have to seek planning permission for future events, and the need for the Athletic Club to have to re-apply for planning permission for their pavilion. Both applications would be fully supported.

Map - the village map is to be replaced.

Precept - no change which in real terms means a slight decrease when the annual cost of living is taken into consideration.

**General:**

All Parishes have been invited to comment on suggestions for an increase in the County Council rate.

**Transport** - tenders have been invited for local bus services and local school transport. A Postbus service is again being considered.

**Richmondshire Junior Sports Awards** - nominations are currently being sought by local parish councils. Closing date, end of Feb.

**Community Office** - the District Council are to consider a facility similar to that now so successful at Hawes. Support is being sought from residents and local parish councils.

## NATIONAL PARK

Management Plan is being produced and copies will be delivered to all residents.

A Standards Committee is to be established to deal with incidents of misconduct within the Authority, along with a new complaints policy.

British Telecom are to make their Integrated Services Digital Network (ISDN) available at all telephone exchanges in the national park.

**Planning:**

Current planning applications include change of use for five bedrooms for B & B at Cambridge House, Reeth and change of use from domestic garage to community print room at Reeth P.O.

## NEWS IN BRIEF

**Millennium Celebrations for Reeth** - a questionnaire is currently being circulated to establish support for suggestions proposed at the recent meeting in the Memorial Hall - the results will be discussed at an open meeting on 7.30pm Fri 19<sup>th</sup> Feb.

**Reeth Memorial Hall** - subject to funding the Management Committee has recommended that the stage be replaced with portable staging and new storage facilities constructed before the main hall is redecorated. This recommendation needs the approval of the Annual Meeting on 8<sup>th</sup> March before and works could progress. A payphone is to be installed.

## BETTER GOVERNMENT FOR OLDER PEOPLE

*A Strategy of the Independence in the Richmondshire District*

North Yorkshire County Council is working in partnership with older people, North Yorkshire Health Authority, Age Concern, the North Yorkshire Forum for Voluntary Organisations, local voluntary organisations, your local district council and local health services to improve services for older people. "We will work together on a "Strategy for Independence." Each of the partners to this project has a lot to contribute in supporting the independence of older people and promoting their participation in the community. By developing a strategy together we will make all of our contributions more effective." Local steering groups comprising representatives of the partnership and of older people and their carers will:

- develop an understanding of the circumstances, events and causes of loss of independence for older people,
- make an analysis of population changes and of the social and economic factors which influence individual need and overall demand for services and look at how these might change in the future.
- involve older people in looking at the causes of loss of independence and in advising on the development of strategies to promote independence,
- develop a joint "Strategy for Independence." This will take these things into account to support independence. It will also require a commitment from each agency to coordinate its services so that we can avoid duplication and can make sure that all our services are as effective as possible.
- Set up long term arrangements so the influence of older people can be maintained into the future.

A representative(s) from the Swaledale and Arkengarthdale area is currently being sought. From this a mechanism will be set up to link in the knowledge obtained from this area, into the planning of services into the next century. For more information please contact Tom Burrows at Richmond Volunteer Centre Tel: 822537.

### THANK YOU

Barbara and Dibs would like to thank all parents, and girls for their appreciation of our 20 years service to the girls of Reeth, and area, and for their good wishes for the Girls Fellowship Club. Special thanks to Mr Camsey and the four Hotels of Reeth for allowing the girls to carol sing. Their carols around the village raised £65.87 for the Fire Service Benevolent Fund.

### GRAND VALENTINES DANCE

from 9pm Friday 12<sup>th</sup> February

Gunnerside Village Hall

Music by "Sound Force" of Darlington

Half and half - Old time and disco dancing

Tickets £4 from bridge Stores

This is a fundraising event on behalf of the Gunnerside Millennium Celebrations

For More information Tel: 886220 or 886325



*So thats what they did with  
Reeth's Air Raid siren!"*

Leeds Library Theatre Company

presents

## "EDUCATING RITA"

by Willy Russell

"Simply a marvellous play, painfully funny and passionately serious. An hilarious social documentary."



Illustration by Jacky Fleming, supporter of National Education Week, 3-5 Nov 1997

**Don't miss it!**

## REETH MEMORIAL HALL

7.30pm Friday 26<sup>th</sup> February

Tickets:

Adults: £4, Children: £2.50

From: Reeth Post Office Tel: 01748 884201

Coming Soon:

The Library Theatre Touring Company  
Presents:

## Fanny Hill

Reeth Memorial Hall,

Friday 26<sup>th</sup> March

Tickets: Adults: £4; Children: £2.50

From: Reeth Post Office, Tel: 01748 884201

## MILLENNIUM TOUR

In June 2000 one hundred musicians from Richmond School will be touring the USA from Seattle to San Francisco, giving concerts all the way. In order to help fund the trip, they are embarking on fifteen months of fund-raising which will include many different types of events, both large and small. To start the ball rolling they will be running the Coffee Morning in Richmond Town Hall on Sat 13<sup>th</sup> Feb. There will be a tombola and cake stall and the launch of the sunflower competition. For just £1 you will be able to buy three sunflower seeds, with growing instructions, and win yourself £25 by growing the tallest sunflower. Measuring will take place on 1<sup>st</sup> Sept.

Many of the students taking part in this tour live up the Dale, so if you are in Richmond that day, take the opportunity to support your local young people in their musical education.



### POST OFFICES

Thanks to local community effort the Post Office has re-opened again at Gunnerside. A slight technical hitch on the grand opening day - the Post Office had not arranged for the usual stock. Gunnerside WI were there though with plenty of coffee and biscuits to keep customers happy. Local Post Offices need your support to keep them open so please USE IT or LOSE IT



## WHERE THERE'S SMOKE - THERE'S FIRE!

Did you see 'Time Team' on TV lately? They were doing an archaeological dig at Burslem in Staffordshire, trying to find Joshua Wedgewood's first pottery works.

Recently we were privileged to join a happy golden wedding celebration in Swaledale. We have known our hosts for forty years, and for about twenty of those they let us a farm house as a holiday cottage. Our four children grew up beside their four. During the dinner party we met another old friend of theirs who lives outside the Dale. We knew of her family but had never met before, "I know who you are," she said. "You had a pottery kiln on the hill!" Well, yes, though I wouldn't have given it quite such a sophisticated name!

The story of the so called 'kiln' goes back to a summer holiday in the 1960s. We had a picnic one day at Semmerwater, our children and the farm children messing about on the edge of the water, skimming stones and finding treasures. I discovered a lovely layer of smooth grey clay a few feet down in the banks of the stream which trickles out of the end of Semmerwater. This kind of thing is irresistible to me. (I have even been known to bring a plastic bag full of clay found in the south of Italy!)

Well, home we came with a good clod of clay, which we mulched with water to make smooth 'slip.' This was duly rubbed through a kitchen sieve to remove pebbles, grass and live intruders, and then left in basins to dry-out in the wind and sun. Once it was back to a working consistency all eight children made pots and models, and while these were left to dry the older children constructed their kiln.

Our oldest son had always been fascinated by the tunnel flues from the lead-smelting works at Old Gang and Grinton, so this was the inspiration behind their work. A trench about 20 or so feet was dug up the hillside, covered with flat stones and turf, ending with an abandoned metal drum for a chimney stack. Then at the base an intriguing firing chamber was

constructed below ground level, this also roofed with stones and turf with some added sheets of metal. The fire-box was a large drain pipe. Finally the children gathered a huge supply of firewood from the gill and topped this with two old car tyres begged from Coates Garage.

In retrospect it seems we and our neighbours may have been a bit irresponsible, for we left our families in the care of the teenagers and headed for dinner at Bolton Castle.

As we returned that evening the rain was lashing down and the wind hurled sparks across the moor. The blaze from the kiln lit up eight delighted faces sheltering under a propped-up wartime rubber dinghy. A black pall of smoke from the car tyres drifted up the hill, doing goodness knows what damage to the lungs of the local sheep and cows! Pots were fired and coca brewing. I still have a little figure made that night. For the family that summer holiday stands out as a special one, partly because of the kiln. Someday, perhaps, archaeologists will find what they may claim to be an example of an early Swaledale pottery industry. Unfortunately, none of the sherds found are marked, which makes exact identification difficult.

Jocelyn M. Campbell

## Age

*A little lady so frail and old  
Frightened at the world turned cold  
No time, no patience for slowness and age  
Where noise and fast music are all the rage  
Or a strong arm to lean on, and time to wait  
To hear old stories before its too late  
Of people she knew - so long ago  
When horse and carts made the pace go slow  
She dreams each night of these now gone  
And awakes alone, and oh so forlorn  
To a world of hustle, and full of speed  
Too deaf to listen to an old woman's need  
So next when you see her amble along  
An arm through hers to make her feel strong  
A cheerful smile, and a word of good cheer  
A memory to cherish, and always hold dear*  
( by Constance Gayton

Published Anchor Books "Spice of Life" )

## LEYBURN LAUNDRETTE & LINEN HIRE 01969 622685

Domestic / Commercial Laundry  
Self Service / Service Laundrette  
Collection & Delivery

### AQUATEX CLEANING

Kinder to Clothes  
Brightens colours - fresher smell  
Agency at: The Gift Shop - Reeth

## R & T DECORATORS

JASON ROBINSON

- TIME SERVED - FULLY QUALIFIED
- ALL WORK GUARANTEED
- COMPETITIVE PRICES

FOR A FREE ESTIMATE  
CALL 01969 624611



## In Richmondshire

Caring for the sick, elderly or disabled person can be a full time job. SHARE CARE is a network of local people who provide relief care to enable those caring for a relative or friend at home to have a few hours break when required.

If you wish to use the service or can help in any way to provide it.....

Contact Barbara Paterson  
01677 450037



## Aromatherapy Reflexology & Massages

For information ring  
Olga Ashton ITEC, IIHT, MIGHT  
Telephone 01748 826022

## THE C.B. INN



## ARKENGARTHDALE

Charles & Stacy Cody  
01748 884567

## Special St Valentines Night Menu

Complimentary WINE  
Booking Advisable

*Outstanding fresh food, purchased locally and prepared and cooked on the premises to a very high standard.*

*The menu is written up daily on the imposing mirror in the main bar.*

### Traditional Sunday Lunch

*Enjoy superb food in a relaxed and friendly traditional inn environment.*

Booking Advisable

## Winter Hours

Monday to Thursday  
Open from 6pm

Friday to Sunday - Open all day

## THE ALTERNATIVE



Friday February 26th  
No experts Prizes for best & worst  
*Also Beer Card Draw Night!*

## NEW BOOKS

*Swaledale Wills and Inventories 1522 - 1600*

Edited by Elizabeth Berry of Reeth

"The idea for this volume came from arranging a display of some of these wills in Grinton Church in the late 1980s as part of the Swaledale festival. This was a small random selection, but when preparing the display notices they proved to be so interesting that I wondered how many 16<sup>th</sup> century Swaledale wills and inventories had survived among the records of the Archdeaconry of Richmond. In the end there were 210, all of which are printed in full in this volume.

Little is known about individual inhabitants of Swaledale in the 16<sup>th</sup> century as most of the surviving parish registers for the dale do not begin until the 1600s. These wills and inventories give names of early members of local families, such as Alderson and Broderick and many others, who have played an important part in the history of the dale down the centuries. In addition these records give information on many aspects of the life of the dale at this time; houses and their contents at all social levels, clothes, food, farming, leadmining and the woollen industry and other trades.

Most of the testators were copyholders of the various manors in the dale and these wills also provide information on property holding, the status and rights of women, provision for the upbringing of children, charitable bequests and the settlement of disputes. All this against the background of great religious and social change, the Dissolution of the Monasteries 1536-9, the Pilgrimage of Grace 1536-7 and the Rebellion of the Northern Earls 1569, all of which affected Swaledale."

published by the Yorkshire Archaeological Society (hb) poa

*Golden Years of Darlington*

Following on from the very popular *Nostalgic Darlington*, this latest book is intended to be a further look at life concentrating on the 1940s, 550s and 60s - a period in time for many local people will represent the Golden Years

Published by True North Books (hb) £14.99

*Memories of Tyne Tees Television*

Recently celebrating 40 years of TTT this book chronicles the early years of TTT (1956 to mid-60's, when light entertainment was 'King' and the City Road Studios buzzed with music, singing, dancing, and comedy. The book includes many intriguing stories about the programmes and the people. Also featured are hundreds of archives photographs from "The Viewer" magazine

Published by GP Electronic Services (pb) £9.95

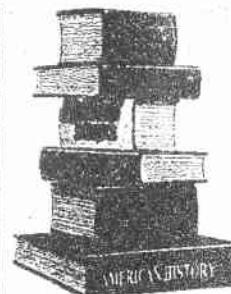
*Wensleydale and Swaledale  
in the Nineteenth Century*

by Dr Christine Hallas of Askrig

A new history of Wensleydale and Swaledale in the nineteenth century which is the culmination of twenty years' research on social and economic change in the two dales between 1750 and 1914. The book studies how well Wensleydale and Swaledale responded to increasing demands for food and materials by the rest of the country in the nineteenth century and how dalespeople flourished in good times and survived the many depression. The study examines changes in population and occupations, landownership and farmholding patterns noting changes in owner-occupancy, land values and rental; the changing emphasis of sheep and cattle including the growing importance of dairying; the rise and fall of the lead, coal, quarrying and textile industries; the impact of road and rail transport on the area; the real extent of migration taking natural increase into account. The publication concludes by calculating and assessing the different levels of wealth generated in the two dales at different times during the nineteenth century by the various industries, including agriculture. It demonstrates that while Swaledale had greater wealth at the beginning of the period, by 1914 Wensleydale was in a healthier position than its neighbour. The book provides a fascinating and detailed account of the two dales in the nineteenth century and shows how two areas in close proximity and which, on maps look very similar can have such different experiences.

Published by Peter Lang, (hb) £22

# BOOKS



New Titles,  
Bestsellers,  
Childrens,  
Reference,  
Audio,  
Text,  
Local Interest,  
Maps, etc  
plus: Videos and  
CDs

if not in stock we  
can get it!

Thinking of a Holiday?

Planning an expedition

Visiting somewhere different?

why not pick up a copy of our FREE

## Travel Catalogue

### Ordering Service Book Tokens

Sold & Exchanged

Reeth Post Office

BookShop

Tel: 01748 884201

(Member Booksellers Association)

Open:

9am - 5.30pm Mon - Sat

It's Good to Read

## MORE NEW BOOKS

*Darlington - a Pictorial History*

by Robert Woodhouse

Darlington is perhaps best known around the world for its importance in railways history, but it was already an ancient town when early locomotives were developed there. Though the Bishops of Durham's manor house was demolished in the 19<sup>th</sup> century, Bishop Hugh Puisel's great 12<sup>th</sup> century church stands in soaring testimony to the medieval importance of the town and its market to the Prince Bishops. By the 18<sup>th</sup> century it was the leading town for flax spinning in England, but when the trade declined in the early 19<sup>th</sup> century the Darlington entrepreneurs, largely Quaker, turned to the railway and other enterprises. Old house and shops in High Row are reminders of tradespeople, who gave the town its unique character and heritage, all vividly revealed in the author's lively narrative and superb illustrations. Published by Phillimore (hb) £13.99

*An Enduring Flame*

Wendy Bardsley & Simon Warner

"A unique and moving account of the lives of the Brontës and Haworth, their home. It endeavours to bring together, for the first time, some of the poetry composed by poets - including Ted Hughes (winner of the 1998 Whitbread Book Award), Emily Dickinson, Cecil-Dat Lewis, Sylvia Plath, Ursula Fanthorpe, Ian McMillan, Adrian Henri and many others - who have been inspired by the Brontës, accompanied by specially-commissioned photographs." Smith Settle have a reputation for publishing excellent books on Yorkshire and with this book they have really surpassed themselves. It is a very beautiful book.

Published by Smith Settle (pb) £14.95 (hb) £23.95

*The Yorkshire Journal*

a quarterly magazine on Yorkshire. The current issue features a very interesting article on the Chapels of our two Dales.

Published by Smith Settle (pb) £2.95

*A Warm and friendly  
service awaits each of our  
clients at:*

## **"The TOP SHOP"**

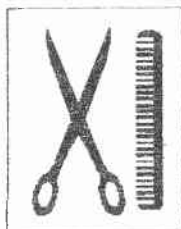
Reeth Hairdressing Salon  
Arkengarthdale Road  
(opposite Reeth Garage)

**Tel: 884627**

*Offering a high standard of  
hairdressing*

*Prices are in the  
region of:  
£7.50*

Shampoo & Set  
£6.50 Trim  
£14 Cut Blow  
£4.50 Gents cut



LOW LIGHTS and HIGH LIGHTS  
with "Easy Mesh" are our speciality -  
including cut and style from £35  
PERMS

including cut, set or blow-dry £35  
followed by your first complimentary  
shampoo and set or blow-dry

### **REWARD CARDS:**

are available for regular clients,  
enabling them to receive special  
offers, discounts, etc.

### **GIFT VOUCHERS**

an excellent Gift at variable prices

### **NATIONAL LOTTERY CHARITIES BOARD**

### **Small Grants Scheme**

for details and application form  
please phone: 0345 458458

### **Paying Bills?**

Telephone Bills, Income Tax, etc.

Going on Holiday?

Foreign currency, travel insurance, etc.

First call - your local Post Office

MAKE A SUCCESS OF YOUR BUSINESS

## **ACQUIRE COMPUTER SKILLS**

Courses in the following will be  
held over three nights,  
6pm to 9pm at  
The Buck Hotel, Reeth  
on the following evenings

<b>Basics</b>	<b>18 February</b>
<b>Spreadsheets</b>	<b>19 February</b>
<b>DTP &amp; Scanning</b>	<b>23 February</b>

*For information  
please phone*  
**Bedale Enterprise  
Centre**  
**HR 01677 423737**

Sponsored by Richmondshire and  
Hambleton District Councils

## **HILLARY HOUSE Reeth**

### **Family run Bed & Breakfast**

1 Double - 1 Twin Room

Tea & Coffee making facilities

Colour TV

**01748 884171**

*C Blodwell*

## **ON THE DEATH OF JOHN GRIFFIN OWEN**

( of Holy Head )

who was killed by the fall of a crane on the Settle and Carlisle Railway, Feb 18<sup>th</sup> 1873

No farewell were spoken, no parting words said  
As he went forth at dawning that day;  
For little they thought, ere the morning had fled,  
That the summons would call him away.

His face was as bright as a morning in spring,  
His heart free from sorrow and shame;  
And, blythe as a lark, he would carol and sing  
Hymns, in praise of his Maker's great name.  
And oft 'twas his custom, while plying his toil,  
To enliven the task with a song;  
Or, with friends interchanging the joke on the  
smile,  
To make labour pass lightly along.

He hath greeted his mates at the cutting of rock,  
And to work they have gone with a will:  
Whilst he, humming a tune, kept time to a stroke  
Of the rattling of hammer and drill.

The crane groan'd and creak'd and loud roar'd  
the shot,  
An the whistling engine ran by them;  
These were every day things and they heeded  
them not,  
Non dream'd they that danger was nigh them.

But hark! A strange sound for a moment is  
heard -  
The crane that o'erhangs them is broken;  
And the heavy jib falls, ere a hand can be stirr'd  
On a sentence of warning be spoken,

In a breath, in an instant, it falls down the rock  
And the workmen are scatter'd below,  
But all, except one, have escaped from the  
shock;  
He, alone, hath receiv'd the full blow.

They raise him up gently and utter his name:  
'Tis in vain - he hath breathed his last breath.  
The spirit hath fled unto him, whence it came;  
And the body is silent in death.

Ah! Now, heavy sobs convulse the strong  
breast,  
And tear's trickle down the hard face,  
As they take the remains of their fairest and  
best,  
And bear them away from the place.

On man in thy power! Oh youth in thy pride!  
Trust not in thy strength on thy skill;  
When the messenger calls thee to lay them  
aside,  
Be prepared to submit to His will.

But how often it happens, that we of short sight  
Are apt to lament or complain,  
When death takes the hopeful, the young and  
the bright,  
While the wretch lingers on in his pain.

But thou, whose we are and 'whose the word is.  
Thou, who wash'dst out our sins with thy blood:  
In thy goodness and wisdom do'st nothing  
amiss,  
But arranges all things for our good.

Look Thou down, in Thy mercy and pitying  
power,  
On the parents who mourn for their son  
Give them strength to look up in affliction's dark  
hour,  
And say "Let the Lord's will be done."

Though his sun has gone down, ere it reach'd  
the noonday,  
Though sudden and fearful the blow:  
Yet pause and reflect - he hath but gone the  
way  
We all, sooner or later, must go.

Then dry up the tear, and let the sorrowing  
cease,  
When the body is laid' neath the sod;  
For rejoicing above at its early release,  
The spirit is present with God.

ON THE DEATH OF JOHN GRIFFIN OWEN  
(of Holy Head)

who was killed by the fall of a crane on the  
Settle and Carlisle Railway, Feb 18<sup>th</sup> 1873

The subject of this poem was buried in Settle Churchyard in the presence of a large concourse of people, and his friends have marked his resting place by a neat marble headstone, bearing in addition to the particulars of his age, etc, the following verse in his native language (Welsh) -

*Ai mewn bedd mai lan bach-o i'e  
loan sy'n ilwch bellach  
Ond daw'n ol etto'n iach  
At ail ves'i'n fil tlysach.*

### **The Wensleydale Tournament of Song 1999**

Events have a habit of coming round with alarming rapidity, and here we are again with another Tournament. We may be prejudiced but we like to think of it as a very friendly and lively, not to say entertaining, eight days. Our contestants are drawn from within a 25 mile radius of Leyburn so it's more than likely you'll find someone you know taking part. It's YOUR local Festival of Speech and Music so why not come along and listen? We look forward to seeing you at the Leyburn Methodist Hall.

#### **March**

10<sup>th</sup>, 11<sup>th</sup>, 12<sup>th</sup>

from 9.15am Children (Speech)

11<sup>th</sup> & 12<sup>th</sup>

at 7.15pm Adults (Speech)

15<sup>th</sup>, 16<sup>th</sup>, 17<sup>th</sup>, 18<sup>th</sup> & 19<sup>th</sup>

from 9.15am Children (Music)

15<sup>th</sup>, 16<sup>th</sup>, 17<sup>th</sup>, 18<sup>th</sup>, & 19<sup>th</sup>

from 7.15pm Adults (Music)

19<sup>th</sup>

#### **Bands**

The above is a provisional schedule. Full programme will be available from Gilsan Sports in Leyburn from 1<sup>st</sup> March.

### **SETTLE - CARLISLE RAILWAY 10<sup>th</sup> Anniversary Express**

The Friends of the Settle Carlisle Railways are to run a special excursion train to commemorate the 10<sup>th</sup> anniversary of the line being saved from closure.

In April 1989, Secretary of State for Transport, Paul Channon, told the House of Commons that the Settle - Carlisle line would be kept open.

The special diesel locomotive hauled train will be on Saturday April 10<sup>th</sup>, and will depart Leeds at 9am, stopping at Keighley, Skipton, Hellfield, Settle, Garsdale, Kirkby Stephen, and Appleby arriving in Carlisle for lunchtime.

The loco hauling the train will be a Class 47 diesel from the English, Welsh and Scottish Railway Co (EWS) fleet, and will be freshly painted in their maroon livery. EWS Operations Director, Mr Randy Henke, will perform a naming ceremony at a station enroute, unveiling nameplates "Ribblehead Viaduct" on the side of the engine.

Fares for adults in Standard Class will be £25, children £12.50, and adults in First Class £35. Passengers joining at Garsdale, Kirkby Stephen or Appleby will enjoy a £10 reduction. All profits from the tour will go towards building new waiting shelters at stations on the line

*Enquiries and bookings should be to:*

*Past Time Railtours,*

*16 Trent Valley Road, Litchfield,*

*Staffs, WS13 6EU*

*Tel: 01543 411971*

Pete Shaw, from the Friends, said, "This train will provide a great opportunity to celebrate the Settle - Carlisle railway being kept open. In the ten years since the parliamentary announcement, much development work has taken place to improve the line for both passengers and freight. Our excursion will have a specially named locomotive hauling it over England's Greatest Historic Scenic Route to the fascinating Border City of Carlisle. For members of the friends, our Annual Meeting General Meeting will be held during its stopover in Carlisle. We shall be holding several other special events during the month of April.

### **While Shepherd's watched their flocks by night**

"We brought no music, the carols were in our head." "Let's give 'em 'Wild Shepherd,'" said Jack We began in confusion, plunging into a wreckage of keys, of different words and temp; but, we gathered our strength; he who sang loudest took the rest of us with him, and the carol took shape, it not sweetness."

Laurie Lee's remarks in "Cider with Rosie" remind us that this was the best known and loved of all the Christmas hymns, especially by country people, who understood more than most the implications of 'watching flocks by night.' It was a favourite of Caleb Bawcombe, the Wiltshire Shepherd, whose life was chronicled so vividly in W.H.Hudson's "A Shepherd's Life" in 1910. Bawcombe spent many a cold lonely Christmas night looking after his 'fleece care' and would have no other occupation. "If my life was offered to me again I'd say give me my Wiltshire Downs again and let me be a shepherd there all my life long." Bawcombe, and shepherds like him, believed secretly that men of his calling were elevated above other mortals because the angels chose shepherds to be the first to hear of the Messiah's birth.

Caleb Bawcombe would have known the Wiltshire version of "While shepherds watched;" the hymn is in common measure and hundreds of tunes came to be associated with it in the eighteenth and nineteenth centuries. Now it is usually narrowed down to one, "Winchester Old." However, many communities retained their own traditional airs and these can still be discovered in villages throughout England..

On Christmas morning, here in Reeth, the Congregationalists always sing the Swaledale version of the hymn with its curious change of time halfway through. There is a Wensleydale version too but it is rarely, if ever, heard nowadays.

Yorkshire, and especially our province, with its long association with sheep is rich in variants of the hymn. A writer in "The Gentleman's Magazine" for 1811 states that in the North

Riding of Yorkshire he was awakened about six-o'clock on Christmas morning 'By a sweet singing under my window,' and looking out he saw six young women and four young men singing "While shepherds watched their flocks by night." Washington Irving, in 1820 was surprised one Christmas night, also in Yorkshire, to hear it sung by rustics. 'I had scarcely got into bed, when a strain of music seemed to break forth in the air just below the window. I listened and found it proceeded from a band which I concluded to be waits from some neighbouring village. They went round the house playing under the windows.'

The man responsible for our most widely sung Christmas hymn was Nahum Tate, son of an Irish clergyman who served as Poet Laureate under three sovereigns. Sadly, Tate was a man of intemperate habits and improvident living and he died hiding from his creditors.

"While shepherds watched" (the song of the Angels at Nativity of our Blessed Saviour) was the only Christmas hymn accepted in the Church of England between 1700, when it appeared in a supplement to the "new version of the Psalms of David," by Nicholas Brady and Nahum Tate, and 1782, when it was joined by "High let us swell our tuneful notes" and a version of Charles Wesley's hymn for Christmas Day, "Hark the Herald Angels sing."

Rodney Hall

*Editors' Note:* a new version of "Cider with Rosie" was screened on TV over the Christmas period and a TV tie-in of the novel has recently been published in paperback.

### **DALES LADIES**

Apologies, but due to unforeseen circumstances the February meeting was cancelled at short notice. However the meeting for Monday 1<sup>st</sup> March, at 8pm with "Thorntons Chocolates" will take place as planned.

### **THANKS**

Mrs Peggy Raw and family would like to thank everyone for the cards and good wishes during her recent stay in hospital



Feelham Fools  
present

## CINDERELLA

7.30pm Thurs 18<sup>th</sup>, Fri 19<sup>th</sup>, Sat 20<sup>th</sup> Feb

Low Row Institute

Tickets available from

Low Row PO Tel: 886235

*bring your own pumpkin (cushion)!*

**Gunnerside WI** - The January meeting was well attended. Members were thanked for serving refreshments at the recent re-opening of Gunnerside Post Office. The guest speaker was Bob Gale, of Arkengarthdale, a retired Fire Officer, whose talk was appropriately called "A Burning Ambition." From his fascination as a boy with the nearby fire station in Otley, he went on to complete 30 years service in West Yorkshire. His talk was illustrated with a display of photographs taken over the years and examples of the different helmets worn up to the present day. The February meeting will be the Annual Pie & Pea Supper followed by a sing-along led by Miss Betty Rutter.

**Richmondshire Mobile Volunteer Bureau**

## MINIBUS



## FOR HIRE!

AS COMMUNITY TRANSPORT

Seats 42 persons and driver.

Available for hire during the daytime Monday, all evenings and weekends

Drivers must be **MIDAS** trained (Minibus Drivers Awareness Scheme). Training arranged by Richmondshire Volunteer Centre, if required. Details of training and rates of hire on application



Funded by the  
National Lottery  
Charities Board

**CONTACT**  
**ROBYN HOLMES**  
**01748 822537**



Richmondshire Volunteer Centre, 6, Flints Terrace, Richmond,  
North Yorkshire, DL10 7AS1

*would you like to*

*Join a NEW branch of the*

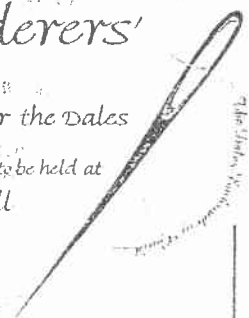
## Embroiderers'

## Guild for the Dales

*An exploratory meeting is to be held at  
Richmond Town Hall*

*2.00 PM*

*Sat 27th February*



*Everyone welcome, whatever your experience,  
come along and share your enthusiasm with  
other people.*

*For more information telephone  
A. Marchbanks on 01325 718355 or  
K. Trusson on 01748 884474*



**YORKSHIRE DALES**  
National Park Authority  
Information Centre - Reeth

Telephone 01748 884059

Your first place of call when visiting  
Swaledale & Arkengarthdale

Summer Opening: (Easter - Nov) 10am - 5pm

Winter Opening: Sat & Sun 10am - 4pm



## Coast to Coast Baggage Services

Door to Door Service

"We'll carry your pack so you don't have to"

For further details contact:

01642 - 489173 or mobile 0802 358457

or write to

1 George Street, Redcar, Cleveland, TS10 2BN

## LETTERS

### Tan Hill

I like F W Hutchinson's December article on Tan Hill. It brought back memories of (almost) pre-war days when as children we made the annual hike to Tan Hill from Muker and back. The road was unsurfaced and the old cottages still stood there, though crumbling, so much more picturesque than today's caravans! There was no one about then. You'd think old Mrs Peacock would have welcomed visitors in that lonely spot, but I can still remember it took some minutes to thaw her out, though she knew my father well, and for her to bring beer and cider from the back kitchen, while we warmed ourselves by the old range.

I loved FWH's comment about her being a good shot. Unless my memory is false, I recall she had a glass eye. Perhaps that helped!

JMC

### Praise

I have been sent a copy of your excellent magazine by a Hudswell lady, with whom I stayed last year while researching family history I live in Willington (the one near Derby) and we have nothing as oogs as the Reeth & District Gazette here!

What a wide variety of articles, from Nagoron Karabakh to poetry and local history.

I was fascinated to read the report taken from the "Bulmers Directory on Arkengarthdale Parish." My family - Peacocks - were at Arkeltown in the 1851 census. However strangely, William (married to Margaret Gill) was a sjhoe maker, suprising as most were lead miners.

It was my first visit last September to the beautiful area, but it will not be my last. If I were 40 years younger I might even try the cycle track you mention, as I only live three miles away from the Derby track.

Compliments again on your magazine, keep up the good work

Barbara Fibiger, Willington, Derby

## The Amblers Winter Quiz

How well do you know your way around - All the answers are the names of places in Swaledale

Example: "A heavy smile ----- Grinton"

1. Sounds like a funeral ring
2. Without an 'e' the chinese weight costs nothing
3. The dog sounds like a cat
4. Join two pieces of metal together W? no K
5. A loving greeting minus an 's' for the professor
6. Should Arsenal F.C. beware of J. Caesar's demise?
7. Listen -er- its on the right side
8. Give up the card game
9. Walkers pig meat
10. Sharpe Edges
11. Drive over the water to the Islands
12. Silly Billy
13. A stream finishes
14. Shore lines
15. \_\_\_ Gibsons streams
16. A place where Ronald rested
17. I have allowed it
18. Bull n' RAF slang for a flight
19. Milk derivative in vessels
20. I muddled up what E.T.I. means
21. The blackbird is in the chair
22. There is snow transport in the valley
23. The ragman is changed
24. Rocks in the ravine
25. A male pig yard
26. Sounds like Lorna Doone's enemy

*Struggling?*

*There will be a small prize for the first correct entry drawn at Reeth Post Office on 22<sup>nd</sup> March*

*( Sorry! But we regret that members of the local Amblers are not eligible to enter on this )*

## THANKS

Mary (Bob) Guy would like to thank everyone who sent cards, gifts and flowers for her 90<sup>th</sup> birthday

Visiting or Walking  
Arkengarthdale? Call in to

## Chapel Farm TEA ROOM

Relax in 'the Zen-like calm' of  
Whaw, a tiny, remote hamlet 2 1/2  
miles beyond Langthwaite off the  
Tan Hill road.

Many of Joyce's home-made  
dishes are from Grandmother's  
cook book - wholesome soups,  
generous open sandwiches, melt-  
in-the-mouth scones and  
delicious cakes - and  
complemented by Yorkshire Tea  
or fine coffee.

CLOSED THURSDAY & FRIDAY  
also 8, 9 & 10 February

**Joyce Best**

Chapel Farmhouse Whaw Arkengarthdale  
Telephone 01748 884062

## T.A.R. Longstaff (Percy)

Cars, Landrovers, Tractors and all  
types of machinery repaired, on site.  
Puncture repaired, Mig welding &  
fabrication.

**24 hours 365 days**

also carpet & upholstery cleaner for hire  
01748 825746 or 0589 725349

## C.J. BEESTON Chartered Accountant

Personal Taxation  
Accounts - Payroll - VAT  
The Laurels, Reeth  
Telephone & Fax  
01748 884535

## Barlington & Stockton Times

### 'The Dalesman's Bible'

Swaledale & Arkengarthdale's  
complete weekly newspaper.

All your local news and sports  
plus readers' letters,  
What's On, Countryman's Diary,  
Past Times,

Looking Back and much more.

Make sure of your copy  
by placing a regular order  
with your newsagent

**45p - every Friday**

## Superb Holiday Cottage ARKENGARTHDAL

Quiet & Private location with  
excellent views

Sleeps 6 - Centrally Heated - Modernised &  
equipped to an extremely high standard

Available all year PLUS

Low season mini-breaks

Mrs. G. Stones 01748 884360

## FACED WITH ANOTHER POWER CUT?

**Don't despair, contact:**



Diesel Generators  
Wind & Solar Power  
Inverters  
Control Panels

## Specialists in Alternative Energy Systems

For specialist advice phone:

**01748 886005 / 886377**

Pager: 04325186529

## GRINTON PARISH - Melbecks & Muker - 1890

as the 20<sup>th</sup> Century draws to a close we are reproducing entries from the "Bulmers History and Directory of North Yorkshire, 1890" to compare the two Dales as they were recorded at the end of the 19<sup>th</sup> Century and as they are at the end of this Century - the third is Melbecks and Muker:

MELBECKS is an extensive township, stretching along the north side of Swaledale, and included in the Wapentake and Petty Sessional Division of West Gilling. It comprises an area of 10,106 acres, more than one-half of which is covered by wild fells and moorlands. Lead ore is plentiful among the hills, and is wrought at several places by the Old Gang Lead Mining Co., Limited, who employ about 100 hands. The soil is light, resting on gravel or stone, and is chiefly in pasture. The rateable value is £3,865, and the population in 1881 was 1,165. The whole township forms part of the manor of Healaugh, of which more anon. Captain F. H. Lyell, lord of the manor, is an extensive landowner, and the following are also large proprietors in the township, viz.:—George William Robinson, Esq., Reeth; the heirs of Joseph Peacock, Esq., Arkingarthdale; the trustees of the late Matthew Whitelock, Esq., E. A. Knowles, Esq., Gorton Lodge; and Thomas and Maurice Birkbeck, Esqrs. The township was formerly noted for its knitted hosiery, but this industry is now almost wholly abandoned. There is no village of the township's name.

Feetham is a considerable village about three miles W. of Reeth. A church (Holy Trinity) was erected here in 1840-1, by public subscription and grant from Ripon Diocesan Society. It is a light and handsome edifice, in the later English style, and was restored and re-seated in 1886, at a cost of £150. In 1841, the township of Melbecks, with part of those of Grinton and Reeth, was formed into an Ecclesiastical District, containing 10,106 acres and 1,519 inhabitants. The living is a perpetual curacy, in the gift of the vicar of Grinton, and worth £160 per annum. The Parsonage is a neat structure on the south side of the Swale, built by the Ecclesiastical Commissioners in 1846, at a cost of £900. During the progress of the work, seven human skeletons were discovered in a mound near the house. They were deposited in the orthodox way—feet towards the east, and had apparently been buried in military clothing, as the buckle of a sword belt and other small matters were found with the bones. There is a tradition among the inhabitants that a skirmish occurred somewhere in this neighbourhood between the Scots of the Young Pretender's army and the "Dalesmen," and it was supposed that these were the remains of seven of the former who had fallen in the encounter. This tradition, if it have any foundation at all, cannot refer to the rebellion of 1745, as the Pretender's army, both in its march and its retreat, passed through Lancashire without entering Yorkshire.

Low Row is a hamlet almost adjoining Feetham. About the year 1690, or a little earlier, Philip, Lord Wharton, an ardent Presbyterian, fitted up his shooting box, called Smarber Hall, near the village, as a chapel for the use of Protestant Dissenters. His lordship also gave two parcels of land, in the county of Westmoreland, the rents of which were to be paid to the minister. In 1809, an Independent chapel was erected in the village, in lieu of this old Presbyterian one; and this was rebuilt and enlarged in 1874, by subscription. The Wesleyans have also a chapel and school here, erected in 1840, at a cost of £600.

Gunnarside and Lodge Green are two adjoining hamlets, divided from each other by a beck, over which a bridge has been recently erected, at a cost of about £700. It is built on the site of one destroyed by a flood some time ago. The two hamlets form a considerable village, now generally called by the former name only. A Wesleyan chapel was erected here in the early days of the sect, and rebuilt in 1866, at a cost of over £800. There is also a school belonging to the same body, attended by 85 children. The village has also its Literary Institute, erected at a cost of £400, raised by subscription, to which Christopher Pratt, Esq., Bradford, was the chief contributor. It contains a smoking room, reading room, lecture hall, and library, in which are some 400 volumes. The following hamlets are also in this township—Blades, Barf-End, Kearnston, and Wintering-Garths.

## MELBECKS TOWNSHIP.

MUKER township embraces an area of 34,066 acres, of which, about 28,000 are rugged fells and moorlands. The district abounds with mineral wealth, but owing to the depressed state of the lead market, and the consequently unremunerative prices which have now prevailed for the last three or four years, the working of that material has been discontinued. Iron ore is also known to exist, and coal is found at Tan Hill, where about a dozen hands are constantly employed. The manor of Muker was purchased from the Crown in 1545 by Lord Wharton. Frances, daughter and heir of the late T. Smith, Esq., of Muker hall, conveyed it in marriage to Charles Lyell, Esq., from whom it has descended to Capt. F. H. Lyell, the present owner. The following have also considerable estates in the township, viz.: Messrs. Winn, Askrigg and West Burton; The Misses Clarkson, Satron; the heirs of the late Thomas Lodge; J. C. C. Routh, Esq., Wood hall, Askrigg; Booth Hay Metcalfe, Esq.; the Broderick family; Mr. R. Alderson, West Stonesdale; Messrs. Scott; Messrs. Wilson, Keld; Simon Fawcett, senr., Angram; R. Thompson, Esq., Inglewood, Penrith; and Mr. John Metcalfe, Gingerfield, Richmond. The estimated gross rental is £7,499, rateable value, £6,768, and population, 837.

The river Swale has its source here among the hills on the borders of Westmoreland, where it is formed by the junction of Sledale and Birkdale becks at Lane End lead mines, about three miles above Keld. The valley thence begins to widen, and the river in its windings forms several small but beautiful waterfalls, the most considerable and picturesque of which is *Keasdon Force*, where the water falls about 15 feet "amidst an amphitheatre of rocks finely fringed with underwood."

Muker is a diminutive market town in the upper part of the dale, 10 miles W. of Reeth, and 20 miles from Richmond, but since the closing of the lead mines, its weekly mart is scarcely worthy the name. The Church (St. Mary) was erected as a chapel-of-ease in 1580, and a District Chapelry constituted, embracing the 10 hamlets forming the township. The edifice is a plain building with a tower, in which are two bells. The living is a perpetual curacy, of which, the original endowment was £8 6s. 8d., paid annually by the landowners of the chapelry, after the rate of 9d. upon every *noble* of rent due to the lord of the manor. It has since been augmented with £800 of Queen Ann's Bounty, £1,000 in parliamentary grants, all of which has been invested in lands, and with an annual grant of £24 made in 1844 by the Ecclesiastical Commissioners, producing a total income of £150 a year. The patronage is vested in the Vicar of Grinton.

There is an "Endowed School" in the village, originally founded as a Free Grammar School, in 1673, by Anthony Metcalfe, who endowed it with a house in London. This was sold and the money invested in land, which now produces £22 10s. a year. The school premises were rebuilt by subscription in 1849, enlarged in 1870, and a residence for the master purchased in 1882, at a cost of £200, towards which Edward Cleasby, Esq., contributed £100. It is now, as remodelled by the Charity Commissioners, a Public Elementary Mixed School, with an average attendance of 30, of whom, not more than ten shall be taught gratuitously. A Literary Institute was erected in 1867, at a cost of £260, of which sum £100 was given by the late William Tarn, Esq., and the remainder by various subscribers. The library contains over 600 volumes. The Wesleyan chapel, a little west of the town, is a plain stone building, erected in 1845, and enlarged in 1869. It will accommodate about 150.

About three miles W. of Muker is the hamlet of *Keld* where there are an Independent Chapel erected in 1745, a school, and a flourishing Literary Institute, with a library containing 700 volumes. The following are also hamlets in this township, viz.: *Angram, Birkdale, Calvert Houses, Ferth, Ivelet, Ornop, Rash, Ravenseat, Satron, Stonesdale, and Thwaite.*

About 2½ miles S.W. of Muker are several openings or fissures in the ground, varying from a few feet to seven yards in diameter, and extending to a considerable depth. They are fancifully named *Buttertubs*. At the head of Swinnegill, about 1½ miles N. of Muker, is *Swinnegill Kirk*, a cavern upwards of 60 yards in length, where the early Nonconformists secretly met for worship when iniquitous laws forbade them to assemble in public.

Post, Money Order Office, and Savings Bank, Gunnerside; William Sunter, postmaster. Letters arrive by mail cart via Reeth and Richmond, at 10-35 a.m., and are despatched at 2 p.m. No Sunday business. Nearest Telegraph Office is at Reeth.

Post Office at William Gill's, Low Row. Arrival, 10 a.m.; despatch, 2-30 p.m.

Marked 1 reside at Feetham, 2 at Gunnerside, 3 at Low Row, and the rest where specified.

1 Alderson Emanuel, vict., Punch Bowl  
2 Alderson George, shoemaker  
2 Alderson William, shoemaker  
2 Batty John, vict., boot and shoe maker, Miners' Arms  
3 Bearpark James, grocer  
1 Birkbeck Mrs. George, grocer  
Brown Thomas, junr., mason and builder, Isles  
2 Calvert David, senr., blacksmith  
2 Calvert David, junr., blacksmith  
2 Calvert Henry, joiner  
2 Calvert Mr. James  
2 Calvert Michael, joiner and wheelwright  
2 Calvert Robert, grocer  
Clarke Rev. Jas. (Congregational), The Manse  
Clarkson Mrs. Micah, Blaides  
3 Coates Edmund, vict., auctioneer and farmer, Queen's Arms  
Coates Simon, blacksmith, Blaides Lane end  
2 Dougill George, joiner  
2 Dougill Simon, builder and contractor  
2 Eales George, greengrocer  
3 Gill William, grocer, draper, and postmaster  
2 Harling Thomas, surgeon  
2 Heseltine Margaret, grocer, &c.  
2 Holmes Rev. J., B.A. (Wesleyan)  
Knowles Edmund Alderson, Esq., C.C., Gorton lodge  
2 Milner Elizabeth, apartments  
3 Milner John C., master, Wesleyan school  
2 Percival Mrs. Ann, grocer and miller  
1 Place Jph., grocer and agent to the Prudential Assurance Co.  
1 Pratt William, joiner  
1 Reynoldson John, mining agent  
3 Robinson Ruth, grocer  
2 Rutter Richard, grocer, High green  
2 Shaw Mary, vict., King's Head  
1 Spensley Carter, overseer  
2 Spensley John Joseph, schoolmaster  
2 Sunter Wm., grocer, draper, and postmaster  
Thompson Mrs. Ann, The Roof, Dyke head  
2 Tiplady George, grocer  
3 Urwin Thomas, grocer and cheesemonger  
3 Whaley Thomas, tailor

### Farmers.

Alderson Alexander, Intack bottom  
2 Alderson James (and carrier)  
Alderson James, Smarber  
3 Alderson Margaret (and carrier)  
Alderson Thomas (and gamekeeper), Birk park  
2 Alderson William (and shoemaker)  
Alderson William, Barfside farm  
Alderson William (and gamekeeper), Hill top  
Birkbeck William, Winterings  
Brown Wm. (and mason and builder), Bellisle house  
Buxton Cornelius, Shoregill head

Buxton Matthew, Dyke head  
Calvert Elizabeth, Smarber  
Carter John, Kearton  
Clarkson Susannah, Strandhouse  
Coates John (and blacksmith), Kearton  
2 Cottingham John  
2 Cottingham Joseph (and flour dealer)  
2 Cottingham William (and shepherd), Hill Top house  
Guy Henry, Jenkin farm  
Harker Simon, Isles  
Harker Simon, Smarber  
Heslop Christopher, Peatgate head  
Heslop Robt. and Eliz. (owners), Brockmagill  
2 Hewgill Agnes Susannah, Mount pleasant  
Kendall Thomas Hutchinson, Wood end  
Martin Thomas, Park hall  
Metcalfe Anthony, Bird's nest  
2 Metcalfe Leonard  
Metcalfe William, Blaides  
1 Peacock Emanuel  
Peacock George, Park end  
Peacock Richard, Ivy cottage  
1 Pratt Elizabeth  
Pratt Elizabeth, Dyke head  
Pratt James, Blaides  
Pratt John, Kearton pasture  
Pratt John, Riddings farm  
Pratt Jonathan, Blaides  
Pratt Ralph Spensley, Thistleboute  
3 Pratt Thomas (and joiner), Hazel brow  
1 Pratt Thomas  
1 Raw Barningham  
Raw Elizabeth, Modesty  
Rutter Anthony, Pot ings  
Rutter Elizabeth, High house  
Rutter Robert, Dyke heads  
Rutter Thomas, Thistleboute  
Rutter William, Dirtyspot  
Simpson Betsey, Blaides  
Simpson Margaret, Kearton  
Smithson Isaiah, Turnip house  
1 Spence Nancy  
Spensley James, Hill Top house  
1 Spensley Margaret  
2 Sunter Thomas  
2 Sunter Thomas (and butcher and income tax collector)  
1 Taylor Joseph  
Thompson William, Blaides  
2 Thwaites James  
Waggett Christopher, Dyke heads  
Waggett Ralph, Pot Ing house  
1 Waller James Harker (and butcher)  
White Christopher, Brockmagill  
1 Whitfield William, Robin gate  
Woodward Henry (yeo.), Winterings  
Woodward James, Spensley house  
Woodward William, Barf end

## MUKER TOWNSHIP.

*Post Office, Muker; John Dunn, postmaster.* Letters are despatched, week-days, at 9-20 a.m., and they arrive via Richmond and Reeth at 11-35 a.m. No Sunday business. Postal Orders are issued here, but Gunnerside is the nearest Money Order, & Reeth the nearest Telegraph Office.

*Post Office, Keld; John Rukin, postmaster.* Letters arrive via Richmond and Reeth on week-days only. Time of despatch is 8 a.m.; arrival, 12-45 p.m. Postal Orders are issued here.

*Marked 1 reside at Angram, 2 at Keld, 3 at Stonesdale, 4 at Thwaite, and rest at Muker, or where specified.*

4 Alderson Ralph, innkeeper and farmer  
2 Alderson Richard, provision dealer  
4 Allison James, tailor  
Broderick Miss Mary, Spring end  
4 Butson Francis, joiner and wheelwright  
2 Calvert George, blacksmith, Bridge end  
Cherry Matt., gamekeeper, Gunnerside lodge  
3 Clarkson Mr. Anthony  
2 Crombie Rev. William (Congregational)  
Dunn John, grocer, draper, and postmaster  
4 Fawcett George, schoolmaster  
Harker Ralph, vict., Travellers' Rest, Calvert houses  
1 Iveson James, butcher  
4 Kearton William, shoemaker  
*Literary Institute; C. Raw, secretary; C. Harker, librarian and treasurer*  
2 *Literary Institute; John Rukin, secretary; James Rukin, treasurer*  
Mason Mr. Nathan  
Nicholson Rev. Jonah Peter, incumbent, Parsonage house  
2 Parrington James, shoemaker  
2 Parrington Richd., vict. and farmer, Cat Hole  
Peacock Mrs. Annas, vict., King's Head  
Peacock Christopher, stone mason and vict., Farmers' Arms  
Peacock James, shoemaker  
Peacock William, vict., Queen's Head  
Pedley Jane, shopkeeper  
Raw Christopher, grocer and draper  
2 Rukin John, postmaster, &c.  
Sowter John W., master, Muker Endowed school  
2 Wagget James, gamekeeper  
Whitfield George, fruiterer  
2 Wilson John, gamekeeper

### Farmers.

3 Alderson Christopher, East Stonesdale  
4 Alderson Edward (yeo.)  
4 Alderson George (yeo.)  
4 Alderson George, junr.  
3 Alderson James, Ravenseat  
2 Alderson James  
Alderson John, Kison  
Alderson John, Thorns  
3 Alderson John, Ravenseat  
3 Alderson John, Hill top  
3 Alderson John, Stone house  
Alderson Mrs. Margaret, Rash  
3 Alderson William, Firs  
Alton George, Ivelet heads  
Buxton John, Crake trees  
4 Calvert James, Moor close  
Calvert William, High Oxnop  
3 Cherry Thomas, Blackmoor house  
4 Clarke Richard (grocer and draper)  
Clarkson The Misses Barbara & Mary (owners), Satron  
3 Clarkson Edmund, Pry house  
2 Clarkson John  
3 Clarkson John, Smithy holme

4 Clarkson William  
Cooper William, Rampsholme  
Dunn Kearton, Ivelet  
1 Fawcett John (butter factor), Greenses  
Fawcett John Alderson, Aygill thorns  
Fawcett Ralph (and flour dealer)  
1 Fawcett Simon, senr. (yeo.)  
1 Fawcett Simon, junr., Skeugh head  
Guy George, Rash  
Guy James, Rash  
Guy Richard  
Guy Mrs. Rosamond & Sons, High Oxnop and Hill Top lodge  
Guy Thomas, Ushagap  
Harker Christopher  
Harker David (yeo.)  
3 Harker James (and colliery agent)  
Harker John  
3 Harker Nathan, Crackpot hall  
Harker Thomas, Heugh  
Harker William, Calvert houses  
Heseltine Francis Jas. (& cattle dealer), Ivelet  
Heseltine Mrs. Margaret, Calvert houses  
1 Horsfall Robert, Greenses  
Hunter Mrs. Margaret, Thorns  
Hutchinson Mrs. Jane, Rash  
3 Hutchinson William, Black howe  
Kearton Foster (and gamekeeper)  
4 Kearton George  
4 Kearton John  
Kearton Joseph (yeo.), Ivelet  
4 Kearton Mrs. Mary  
1 Kilburn John  
Kilburn William, senr. (yeo.)  
3 Kilburn William, junr., Hoggarth  
2 Metcalfe Mrs. (owner)  
Metcalfe Henry & William (yeo.), Kison  
2 Metcalfe James, Ellers  
3 Metcalfe Jane, Smithy holme  
3 Metcalfe Richard, Firth  
2 Metcalfe William (and grocer)  
1 Peacock Christopher (yeo.), Skeugh head  
1 Peacock John, Skeugh head  
Peacock Leonard, Scar house  
Raw William, Sim  
Reynoldson John (and butter factor), Thorns  
1 Rukin Michael  
Rukin Robert, Thorns  
1 Rukin William  
3 Scott Anthony, Firth  
Scott Christopher Alderson  
3 Scott George, Park house  
3 Scott Richard Alderson, Harker's house  
Swinbanks Mrs. Mary Ann, Ivelet heads  
Thornborrow Robert, Birkdale  
Wagget Ralph, Ivelet  
Westwick William, Gill Head house  
Whitell Christopher, Rash  
Whitell John, Low Oxnop  
Whitfield John and Robert, Ivelet  
Whitfield Robert, Calvert houses  
2 Wilson Thomas (yeo.)

## DALESWAY DRIVING SCHOOL

**CHRISTINE WHITEHEAD**

DoT Approved Instructor

CATTERICK RICHMOND  
SWALEDALE WENSLEYDALE

**01969 623299**

2 Church View, Bellerby  
Leyburn DL8 5QG

## Arkleside Hotel Reeth

*Dorothy & Richard*

*Welcome Non - Residents for  
Private Dinner Parties*

*Tel. 01748 884200*

## AROMATHERAPY REMEDIAL MASSAGE REIKI

Una Berry SP Cert A, MISPA  
Telephone 01748 884644



**B E N C H M A R K**  
Corporate Graphics & Graphic Design  
Telephone 01748 884513

## WENSLEYDALE TREE & HORTICULTURAL SERVICES

All tree, forestry and horticultural work undertaken  
(INSURED)

David Allen (HND Arboriculture)  
Foss Garth, Thwaite, Nr. Richmond  
North Yorkshire DL11 6DR  
**01748 886071**



**JAMES PEACOCK**  
FOR YOUR COAL &  
SMOKELESS FUELS

Approved coal & Fuel merchants  
Speedy & reliable deliveries of  
solid fuels & oils throughout the  
Swale & Arkengarthdale area

Telephone  
**01969 650465**

## Tony Sunter

Dry Stone Walling

Plastering &  
other building work

Telephone 01748 884624  
after 6pm

## DEREK JOHNSON

Your Local Handyman  
Hill Side Arkengarthdale

Garden Services  
Grass Cutting  
Paving Fencing  
Painting &  
Light Home Maintenance  
**01748 884590**





Comings & Goings  
Parish News  
Matters of Interest

**Muker Parish Millennium** - At a Public Meeting on Tuesday 26<sup>th</sup> January held in Muker Public Hall with twenty people attending, a constitution was ratified and adopted and a working committee formed under the Chairmanship of Mr Ernest Whitehead. Following on from decisions taken and suggestions made at previous meetings Mr. Charles Hepworth reported on the price and availability of a celebration glass roundel. Dr. Dustin Mirick detailed the present position of the Archive project with financial estimates and funding applications. It was reported that the Y.D.N.Park Authority do require a planning application for the proposed celebration Cairn although they will only charge half the normal fees if the Parish Council submit the application. It was proposed that since the Cairn was to be a Parish memorial of the Millennium then this cost should be part of and charged to the Parish Precept. This will be on the agenda of the next Parish Council meeting.

Make a note of SATURDAY 1<sup>st</sup> JULY 2000 - Grand Party SHOW FIELD - MUKER.

**Muker Luncheon Club Christmas Party** - Forty eight members enjoyed an excellent meal supplied as usual by The Farmers Arms, Muker followed by entertainment and a singalong. How nice it is to hear just how much folk really did enjoy the day. Thanks go to Mr. Roger Smith for his humorous monologues and stories. To Mrs Susan Thompson for so kindly agreeing to provide the organ accompaniment and song sheets for the singing. Thanks went to Mrs. Harriet Alderson, Mr Tony Mahoney, Mr Cyril Barningham and your reporter for their solo's and joint efforts. The voluntary helper team say thank you for members appreciation. General notice to all :- The Annual General Meeting of the Luncheon Clubs Association will be held on Wednesday 17<sup>th</sup> February at 2pm. in Muker Public Hall - All are Welcome - tea or coffee will be served prior to the meeting.

For all Luncheon Club Members a Theatre Outing has been arranged to the Darlington Civic for the Darlington Operatic Society's production of Rodgers & Hammerstien's popular musical "The KING and I". This is for the matinee performance on Saturday 17<sup>th</sup> April 1999. A block booking has been made and the bus is booked- please see the booking form in all the February Menus.

**Road Maintenance and winter gritting** - Motorists who wish to support your local Parish Councils in their long campaign and series of complaints about the very poor service and spend on rural roads by the County, should write to register your complaints so they can be placed by your Councillor direct to the County Officers responsible for the roads at the next Forum which is to be held in the Old Court Room at Thornborough Hall, Leyburn at 7.0pm on Wednesday 10<sup>th</sup> February. Upper Swaledale especially would appear to be poorly served.

### Hillcrest Crafts

Derek J Harker  
Wrought Ironsmith  
Individually handmade  
& finished wrought iron work  
tel: 01748 884566



Interior, Hearth & Garden Furniture & Fixtures  
Gates, Railings, Spiral Stair Kits & Balustrades  
Security Grills & Pub Bar Fixtures  
Lighting, Music Stands, Weather Vanes...  
All products may be styled to your specifications  
making each piece an original  
Langhwaite Arkengarthdale Richmond DL11 6EH

### SWALEDALE WOOLLENS



For over 20 years, this Swaledale cottage industry has provided local knitwear for customers at home & abroad.

**You are welcome to visit us.**

We open daily and our mail order service is always available

Swaledale Woollens Ltd.,  
Muker Richmond N.Yorks DL11 6QG  
Telephone 01748 886251

### HOLIDAY COTTAGES WANTED

For our very successful letting service based in Hawes. Let us market your holiday cottage alongside the 100 other properties we already have in Swaledale, Wensleydale and Dentdale. Most achieve 30-40 weeks booked per year but we will happily register cottages that are limited by Council Tax rules to 20 weeks letting.

We also offer a complete holiday cottage caretaking and management service. Inspection visits are without charge or obligation. *Call by or ring us or write to:*

### COUNTRY COTTAGE HOLIDAYS

Dryden House, Market Place, Hawes, North Yorkshire DL8 3RA Telephone 01969 667654

### Europe's Leading Jazz Band is coming to Reeth

Since bringing the Yorkshire Post Jazz Band to Reeth last March, Langhwaite clarinettist Roger Myerscough has now joined 'Phil Mason's New Orleans All-Stars'.

The 20 day UK tour presents a marvellous opportunity to bring this band to the dale and they will be appearing at the Buck Hotel on Friday 26<sup>th</sup> February at 8pm.

The band is constantly on the road spending as much time on the continent as in the UK and is always in demand at all leading Jazz Festivals and Jazz Clubs. Widely recognised as the most exciting New Orleans Jazz Band on the road they feature Christine Tyrrell on vocals - from Gospel to Blues.

For the Jazz aficionados who had a 'ball at the Buck' with the Yorkshire Post Band - this date is really a must - so book early to avoid disappointment!

Tickets £7.50 including supper available from the Buck Hotel Reeth Tel: 01748 884210

Tickets. For further information call Graham White on 01748 884051



### REETH MARKET

**Support YOUR Local Market  
Every Friday 10 until 4**

**Fruit & Veg - Butcher**

**Paperware (Household) & Toiletries**

**Crafts Stalls - Woodturning**

**Plants, Socks**

**Jams & Preserves**

*A friendly market set against the beautiful backdrop of SWALEDALE*

For details call Elaine Johnson 01748 884590

## THE EEC - THE WAY AHEAD GROWS CLEARER

The European Union Commissioners have announced that agreement has been reached to adopt English as the preferred language for European communications, rather German, which was the other possibility.

As part of the negotiations, Her Majesty's Government conceded that English spelling had some room for improvement and has accepted a five year phased plan for what will be known as EuroEnglish (Euro for short).

In the first year, 's' will be used instead of the soft 'c'. Certainly, civil servants will relievie this news with joy. Also, the hard 'c' will be replased with 'k'. Not only will this klear up konfusion, but typewriters kan have one less letter!

There will be growing publik enthusiasm in the sekond year, when the troublesorne 'ph' will be replased by 'f'. This will make words like 'fotograf' 20% shorter!

In the third year, publik akseptanse of the new spelling kan be expekted to reach the stage where mre komplikated changes are possible. Governments will enkourage the removal of double letters, which have always ben a deterrent to akurate speling. Also, al wil agre that the horrible mes of the silent 'e' in the languag is disgrasful, and they would go.

By the forth year, peopl will be reseptiv to steps such as replasing 'th' by 'z' and 'w' by 'v'. During ze fifz year, ze unesesary 'o' kan be dropped from vords kontaining 'ou', and similar changes vud of kors be aplid to ozer kombinations of leters.

After zis fifz yer ve vil hav a reli sensibl riten styl. Zer vil be no mor trubls or difikultis and evrivun vil find it ezi tū understand ech ozer.

**Zen ziz drem vil hav finali kum tru !!**

## The Bridge Inn Grinton



**Did you know that the Governments budget price increases came into effect on January 1st ?**

Fortunately this **doesn't** affect Grinton - our prices are coming **DOWN !**

Spirits are coming **DOWN** & Guinness is now £1.90

**But that's not all !**

Monday - Friday 7 - 9pm there is 25p off **EVERY** pint & **ALL** spirits are just £2 per double, There is **NO** catch, this is a genuine offer !

**PLUS**

Steak Nights, Tuesday &

Thursday 6:30 - 9pm

12oz Sirloin Steak £7.95

Buy two & a bottle of

House Wine is \$5

Buy four & the Wine is free !!

**Friday 12th February**

**Quiz Night !!**

**Happy Hour on all Night !!**

(25p off every pint  
spirits £2 per double)

*For further information call:*

**01748 884224**

## Dovetail

*Antiques & Ethnic Crafts  
from around the World*

**ANTIQUE PINE & OAK**

**KITCHEN & GARDEN  
ARTIFACTS**

**Made to Measure  
Re-Claimed PINE  
& OAK Furniture**

**Gallery & Original Gifts**

**5% DISCOUNT  
with this ad**

Why Travel MILES  
were on your Doorstep

2 Bridge St, Bedale  
01677 426464

**Free Swaledale Delivery**



En-suite + Private Shower,  
Private Tea/Coffee facilities  
TV Lounge with open fire  
Easy access, ample parking  
Non Smoking Establishment  
Arkengarthdale Richmond North  
Yorkshire DL11 6EN

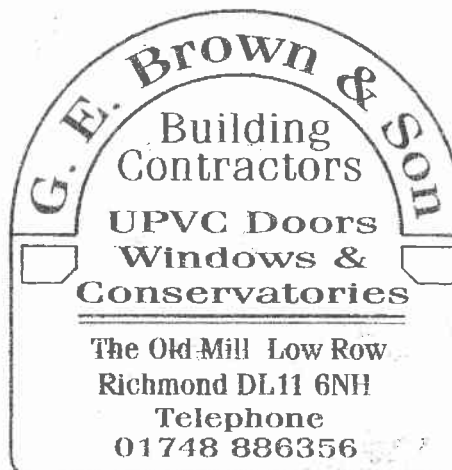
Phone & Fax : Brenda Martin  
01748 884051



**IAN LAW**

Painter & Decorator  
EST. 1977

For **ALL** Interior & Exterior Work  
Walker House Marrick  
01748 884342

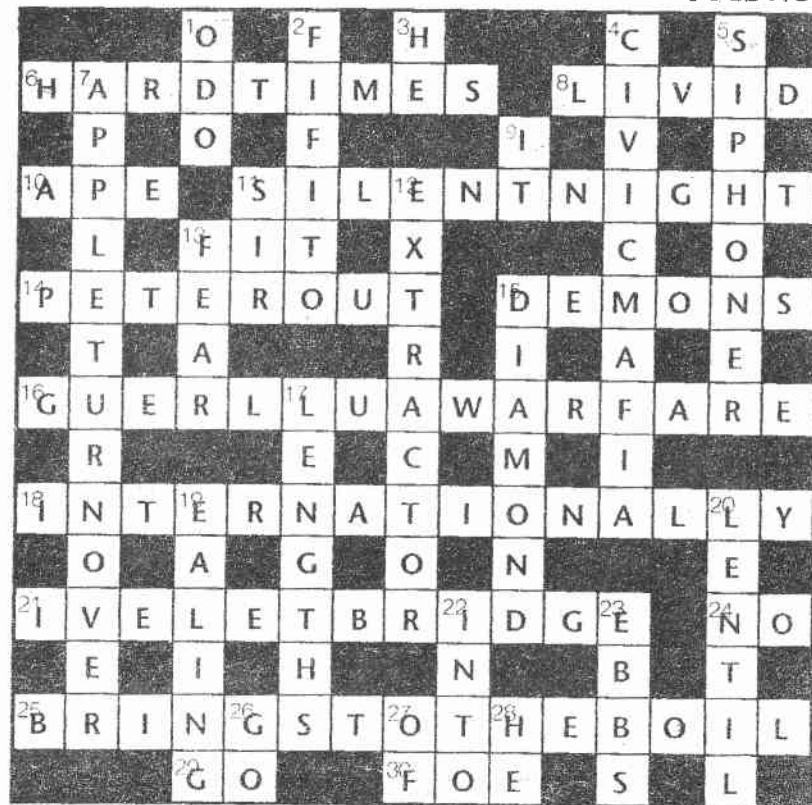


The Old Mill Low Row  
Richmond DL11 6NH  
Telephone  
01748 886356

## THE BURGOYNE HOTEL

On The Green Reeth  
Richmond North Yorkshire  
DL11 6SN  
Telephone & Fax  
01748 884292

# CRYPTICALLY CRASS CHRISTMAS CROSSWORD - SOLUTIONS



**ACROSS** 6. What the Cratchits went through in Dickens' story. 4,5 8. Angry at the six caught in cover. 5 10. See 26 dn. 11. Carol is mum at the end of the day. 6,5 13, 22dn & 9dn Hopefully you'll do this in your new dress after Christmas Dinner. 3,4,2 14. Man is not in the end. 5,3 15. See 13 dn. 16. Revolutionary monkey business? 8,7 18. Country folk come in to bury a friend all over the world. 15 21. I have allowed game to cross the river here. 6,6 24 & 29ac Entry barred to Goon Show. 2-2 25. Gets very heated about what the doctor does with his lance. 6,2,3,4 29. See 24 ac. 30. Enemy returns in time of need. 3

**DOWN** 1. Strange the way Hendrix died. 3 2. End up in Italy. 6 3 & 28dn Two men getting a laugh. 2,2 4. City mother states fear of corrupt city fathers. 5,5 5. He draws off ring in 12. 8 7. Beatles company finances are sweet! 5,8 9. See 13ac. 11. Master of gross irreverence. 3 12. He gets out of an old farm vehicle. 9 13, 27dn & 15ac. Evil paranoia or dread of a quick card game? 4,2,6 15. Rock one of thirteen. 7 17. Feet, for instance, may cause trouble. 7 19. Sort of comedies that 'elp you feel better. 6 20. Loaned a pound to get some food. 6 22. See 13ac. 23. One of the things sea-water does in Captain Webb's opinion. 4 26 & 10ac. Freak out at clue 16. 2,3 27. See 13dn. 28. See 3dn.

**BONUS EXTRA:** Now that you have completed the crossword (and have not gone on a much needed holiday) rearrange most of the perimeter letters to invent a lurid title for a belatedly discovered ripping boys' yarn from a well-known series. This is a feminist version in which the beknighted high-flying hero has a spot of bother with his missus. You can forget East Soho (even if she can't!). 4,7,5,2,3 **LADY BIGGLES CHOPS IT OFF**

## Staddlestones BED & BREAKFAST



In the peace and beauty of West Devon, close to Dartmoor - Walking, Fishing, Boating, Riding, Golf, Bird Watching & more.

Twin bedded room, private sitting room & bathroom - T.V. & radio, tea & coffee facilities. Full use of secluded garden - croquet.

For more details & brochure please ring Rosemary Harris 01837 861389

## WEIGHILL'S GARAGE

Proprietor: Steve Simpson  
Reeth Richmond DL11 6TS  
01748 884245

**MOT - Servicing - Repairs**  
**Tyres - Exhausts - Batteries**

**Your local dealer for**

**MUL-T-LOCK**

**The Ultimate Physical**  
**Vehicle Immobiliser**

## HIGH GREEN BOOKS of CATTERICK

Secondhand Books Bought & Sold  
Telephone - Tony Pelton  
01748 818703

## LOOSE WEIGHT - LOOK GREAT - FEEL FABULOUS

It's easier than you ever dreamed it could be at caring, friendly classes held in LEYBURN on Thursday evenings - 7pm in the Community Centre (opposite the King's Head).

Join **SLIMMING WORLD NOW!** Our help is always a phone call away.

Telephone Yvonne 01748 818984

*We're winning the losing battle!*

## HILLTOP FARM ARKENGARTHDAL

Large holiday cottage, high on the fellside  
with wonderful views.

Central heating, 2 sitting rooms  
2 bathrooms, boot & shower/drying room.  
Sleeps 10 - ideal for large family groups.

**Wilf Bishop**

1 School Lane, Kings Ripton, Huntingdon  
Cambridgeshire PE17 2NL

Telephone: **01487 773328**

E-Mail: **wilfbishop@msn.com**

## ROBERT STONES BOBCAT & MINI EXCAVATOR HIRE

WITH OR WITHOUT  
OPERATOR



**ALSO: 4 WD TRACTOR &  
10 TON TRAILER**

Pepper Hall Arkengarthdale  
Richmond North Yorkshire DL11 6EH  
01748 884360 or 884718  
Mobile 0421 605700

## Richmond Computers

### New Computer Systems

- With Games from £679
- With Internet from £745
- For Business from £869
- 2nd User Systems from £190 with software

### Colour Printers

prices from £135

MS Office 95 CD £60

MS Works CD £40

Windows 95 installed £89

### Upgrade Service

eg 486 to Pentium £199

(Pentium motherboard, Cyrix chip & fan)

### Repair Service

for most makes of PC

### TRADE-INS WELCOME UPGRADES - EXCHANGES

Prices fully inclusive.

What you see is what you pay!

Phone now to discuss your requirements on **01748 884527** available most days 9 - 6pm - not Sunday

## QUIZ

S	I	L
C	S	A
C	L	A

See if you can make 70 or more, words of four letters using each letter only once. The letters also make a nine letter word, what is it? Small prize for the first longest and complete entry drawn.

Drop in your entry to the Post Office by  
**FEBRUARY 22nd**

## THE C.B. INN



## ARKENGARTHDALE

We are looking to expand our Kitchen Team.

If you are interested in cooking and want to work with real food in a challenging environment, then call Charles or Sharon at The CB Inn, on **01748 884567**.

No experience necessary, but an interest in food is essential. You must be prepared to work hard, accept flexible hours (including evenings) and willing to learn.

## THANKS

Jill & Stuart (May) would like to thank all their friends & neighbours for the support & cards received following his accident.

Arkengarthdale Jubilee Club; meet on Tuesady February 12th in the Arkengarthdale Methodist Church Hall at 7.30 when Bob Gale (retired fire officer) will give a talk entitled Burning Ambition. All welcome

For those who came to see the new Video by Dave Carlisle on lead mining there are a limited number of copies available at a cost of £13 - if you would like a copy please call Dave on 01833 628377

## WORD QUIZ UPDATE

December's winner: Sylvia Jones Healaugh  
January: Margaret Johnson Gunnerside

Over 145 Years  
of Free Financial  
Advice

**ROYAL  
LIVER  
ASSURANCE**

For FREE, no obligation, financial advice on any of the following, simply phone STUART MAY on 01748 884040 or phone our office at North East Regional Business Centre, Holland Park, Holland Drive, Newcastle upon Tyne, NE2 4LD.  
Tel: 0191 247 4800

- Life Assurance
- Pensions
- Savings & Investments
- Mortgage-linked Endowment & Protection
- Children's Savings Plans
- Serious Illness Survival Cover
- Building & Contents Insurance

Royal Liver representatives are authorised exclusively to advise on Royal Liver's range of products and services.

Royal Liver Assurance Limited  
Life & Endowment and Personal Pensions  
An Incorporated Friendly Society. Regulated by the Personal Investment Authority (Investment products only)

## RICHMOND DRIVING SCHOOL

One Hour Lessons  
Discount for  
Two Hour Lessons  
Semi-Intensive Courses  
Help with Theory Test

Call Mark on  
**01748 884622**

## REETH GARAGE Ltd.

Arkengarthdale Road, Reeth  
Richmond DL11 6QT

**for Williams  
Trailers**

New Generation of Livestock Trailers introduced

All Alloy sheep Deck & Ramp system easyload/unload In stock now 10 Models at sale prices from Britains' leading manufacturer.

--000--

Commercial range of trailers Ideal for Builders Merchants, Tradesmen Low loaders, General Purpose, Plant, Tipping, Pick-up canopies. Hunter Horse boxes

Contact: Harvey Robinson

**Telephone: 01748 884243**



LOGS - BAGGED  
or PICK-UP LOAD

Free delivery  
locally or collect  
by arrangement

John Hird - 01748 884380



End of Season SELL OFF!  
Small & Medium Maintain Bikes  
**MUST GO!**  
Will suit ages 10/11 and up  
Nearly new & used bikes

From £140  
**01748 826960**



## MARKET PLACE

BMW · LAND ROVER · VOLVO · MAZDA · VAUXHALL

# DORANT LTD

## CAR AGENTS



### 4x4's

98 R LANDROVER FREELANDER 1.8XEi 5-door Stationwagon. Red. Air conditioned, hill descent, one owner, 8,500 miles. £19,795

97 R LANDROVER 90 COUNTY STATION WAGON. Blue Metallic, free style alloys, 12,000 miles. £18,995

97 P SUZUKI VITARA 5-door Diesel. Red / Silver. 31,000 miles. £11,495

96 P LANDROVER DISCOVERY TDi 5-dr. Alloys, sunroof, Riva Red, 41,000 miles. £15,795

95 N VAUXHALL MONTEREY LWB 3.1LTD. Blue Metallic. FSH, 35,000 miles. £14,495

95 N ISUZU TROOPER 3.1 SWB TD CITATION 3-door. Black. One owner, air conditioned, FSH, 32,000 miles. £13,995

95 N LAND ROVER 110 TDi. 12-Seater COUNTY STATIONWAGON. Niagra Grey Metallic, one owner, FSH, 43,000 miles. £13,995 + VAT

94 L LAND ROVER 90 TDi (300) Pickup. Green, one owner. £7995 + VAT

94 L LANDROVER DISCOVERY V8i 'S' Auto Aircon Cruise. Epsom Green, CD, sunroofs, 9-steps, T-bar, only 32,000 miles. £11,995

93 L TOYOTA HI LUX 4x4 Diesel. Blue, 39,000 miles. £7995 + VAT

92 J LANDROVER DISCOVERY TDi 5-dr. In Blue, 74,000 miles. £8995

91 J LAND ROVER 110 2.5TDI COUNTY STATIONWAGON. White. £6495

91 J ISUZU TROOPER SWB TD. Maroon, 74,000 miles. £6995

90 H RANGE ROVER 3.9 VOGUE Auto. Dark Brown Metallic, 73,000 miles. £7995

89 G TOYOTA LANDCRUISER 5-dr GX 4.0 Diesel. £4995

84 A LAND ROVER Stationwagon Series 3 Diesel. £1995

### 7-SEATS PLUS

96 N RENAULT ESPACE 2.1 Turbo Diesel RT ALIZE 7-seats. Air con, 44,000 miles. £12,995

89 G RENAULT ESPACE 2.0 TXE. Grey Metallic. £4995

### CARS

96 P FORD MONDEO 1.8LX Estate. Red. One owner, FSH, 32,000 miles. £7995

96 N VAUXHALL CORSA 1.2LS. Grey Metallic, 26,000 miles. £4995

95 N PEUGEOT 106 XND Diesel 3-door GRADUATE. Blue Met. One owner, FSH, 35,000 miles. £4295

92 K CITROEN ZX AVANTAGE 5-door 1.9 Diesel. Morello Cherry. 64,000 miles. £3295

92 K VAUXHALL CAVALIER LS 5-door Saloon. In Black. £2995

92 J BMW 318i 4-door. Red. Alloys, colour coded, boot spoiler, full service history. £7495

91 H HONDA CIVIC, 3-door, Vtec. White, one owner, 85,000 miles. £3795

89 G TOYOTA MR2 GT. Leather, three owners, FSH, 85,000 miles. £5995

*This is just a selection of Vehicles available  
Please call with your requirements*

### NEW & USED CARS SUPPLIED TO ORDER.

### NEWGATE GARAGE, BARNARD CASTLE

Tel: (01833) 630620

Mon-Fri 8 am-7 pm. Sat 8 am-5 pm  
Sunday by appointment

703773 04-9500

VAUXHALL · TOYOTA · HONDA · ROVER · BMW



## The Kings Arms REETH

*Swaledale's Inn on the Green*

### Events in February:

*Friday Quiz Nights*

*with special offers on food and drink  
1st and 3rd Friday in the month*

*Bargin Winter Themed*

*Supper Nights*

*served in the dining room 'til midnight*

Also:

*"Innkeepers Ale Choice"  
the landlord will select a different  
real ale to be served at  
£1 per pint each evening*

Plus:

*Pool, Darts, and Dominoes*

### Music

Sat 6th Feb Steve Windross plays  
the Sax

Sat 27th Feb Dr Browns Blues Band

Sat 6th Mar The Westport Tinkers  
play Irish Folk

Telephone: 01748 884259

Fax: 01748 884159

- **Part Time Cleaner** - wanted for Swaledale Folk Museum, Reeth. Hours and wages by arrangement. Tel Mrs E Law 884373
- **Cleaner** required to help with Holiday Cottage near Low Row. 2 - 3 hours on Saturdays through the summer £15 could suit student. Tel: 886243
- **Zenith binoculars** for sale - 10 x 50 in leather case and in good condition £25. Tel: 884063
- **For Sale** - "Ercol" settee in light oak, vgc, can be used as a bed, new cushion needed £50. Tel: 886243
- **Football boots** - blue "Umbro", size 6 as new £20 ono; 2 seater settee, light green dralon - reversible cushions as new, £30 Tel: 884206
- **2 matching Parker Knoll** rocking chairs £8 each Tel: 886341
- **Toshiba microwave**, white 650w £45 Tel: 886220
- **Registered Child Minder** in Swaledale has vacancy. Tel: 825746
- **Computer Problems?** For hardware/software solutions and tuition call 884426
- **Traditional Signwriter & Signmaker:** Rodney Teasdale - Tel: 886357
- **Silver Cross** pram/pushchair for sale, green and cream check, hardly used, good condition £85; twin pushchair (tandem) good condition, very sturdy £35; teak headboard £10; biege dralon headboard (double) £10 Tel: 886886
- **Ercol** two seater settee and rocking chair, offers Tel: 884201
- **Found** very friendly marmalade cat in good condition, female about 3 years old, owner or a good home required. Tel: 886243
- **SEAT 1.5**, 1986, 5-door, MoT, low mileage for year, economical to run, £400 ono Tel: 884898 after 9pm or weekends.
- **Furniture For Sale:** Mahogany Ercol Dining Table and 6 chairs £150; large mahogany glass fronted display cabinet - as new £250; mahogany glass fronted corner cabinet £60; oak bookcase £50; mahogany rocking chair £40; small Bendix tumble drier £20; two extendable brass fenders £20 each. Tel: 884922
- **Cakes** - made to order Tel: Gladys Atkinson 884550
- **Manure Spreading** - very experienced contractor required to spread manure on 4 acres of undulating land in Low Row, when/if weather permits, Tel: 886291
- **"Ercol" furniture** vgc 3 seater settee £150; rocker £75; 2 chairs £50 each; stool £25, or ono, phone 884109
- **Logs and Free Ranges Eggs** - Tel: 884380
- **Wanted** - 2 bedroom cottage to rent in Reeth area for 6 months, from March '99 - possibly longer, must have garden. Good refs; goo deposit; non smokers Tel: 01702 543517

### Swaledale Window Cleaning -

We are trying to get enough people who wish to have their windows cleaned on a regular basis, to make a viable window cleaning round for Swaledale So if you need a regular, reliable window cleaner please Tel 826771

■ **Typing & Word-processing Service** - any work undertaken, reasonable rates, letters, reports, memoirs, theses, etc. Tel: 884089

■ **Any wrought iron work**, interior or exterior, estimated price is guaranteed price. Tel: Stephen Calvert on 886577

■ **Mushroom Compost** for Sale - 50p per bag - deliveries possible. Contact Hazel Oliver 01969 663179

■ **Jack-of-all-Trades Handyman** - available for jobs around the home - Phone Martin on 01969 650785

## MARKET PLACE

- **I have a large collection** of minerals on display, for sale and mail order. Contact M. Johnson Tel: 886376
- **Carpet Upholstery Cleaner** for Hire Tel: 884760

**Antiques Restoration**  
French Polishing, Wax & Oil Finishes,  
Traditional Upholstery - Collection & Delivery.  
Tel.: 01677 424793

**CATERING**  
for all your catering requirements contact  
Alison or Lisa on 886434 or 886335

**Cakes for Occasions**  
decorated to your design or ours,  
wedding cakes our speciality.  
Phone 886239 or 886355 (evenings)

- **Learn to Play the Flute** - Tel Libby Gillon on 886276

**WORD PROCESSING**  
Don't need a full-time secretary but would like someone to handle your paperwork. Letters, reports, mail-shots, etc. If I can read your handwriting I'll type it for you. Rates negotiable  
Call Sue on 884244 / 884817 (ans phone)

- **Learn to Play the Double Bass** with Dominic Rivron Mus B (Hons) Double Bass, 'Cello, Bass and Folk Guitar tuition Music Theory (reading music, song-writing, Grade V, etc) Tel: 01969 624292
- **Piano Tuning** and repairs - John Hardcastle, Leyburn Tel: 01969 624965
- **Richmond Allergy Testing Centre** for food and environmental intolerances, Eliminating offending foods can also balance body weight Tel: 850553
- **Alexander Technique** for underlying postural back, neck and joint problems. Gail Barlow AIL, DipM STAT Cert Nut for private appointments/courses Tel: 850553
- **Self Catering Hostel Accommodation** the Keld Centre Tel: 886559

Home Sewing Service  
Curtains, Cushions, Loose Covers,  
Bedheads, Blinds, Bedspreads, Upholstery  
Reasonable Rates, Professional Standard,  
Free Estimates  
Christine Long Tel: 825773  
c/o Janet Sunter Tel: 884624

**LEONARD SCRAFTON**  
Carpenter / Joiner (City & Guilds)  
General Maintenance Tel: 824106

- **Photocopying - Duplicating - and Laminating** available from the Reeth & District Gazette at Reeth Post Office
- **Do you need your holiday cottage** spring cleaned? Decorated? For the new season. Then we are the women to do it. Honest, reliable, local women, reasonable rates. Please ring 01969 667173 or 017683 72011 after 6pm
- **Computer Tuition** - contact Betty Law of the Western Dales Training group Tel: 01765 640234

**Royal Mail**  
1999 Millennium Stamp Collection

2 <sup>nd</sup> Feb	<i>Travellers' Tale</i>
2 <sup>nd</sup> Mar	<i>Patients' Tale</i>
6 <sup>th</sup> Apr	<i>Settlers' Tale</i>
4 <sup>th</sup> May	<i>Worker's Tale</i>
1 <sup>st</sup> June	<i>Fans' Tale</i>
6 <sup>th</sup> July	<i>Citizen's Tale</i>
3 <sup>rd</sup> Aug	<i>Scientists' Tale</i>
7 <sup>th</sup> Sept	<i>Farmers' Tale</i>
5 <sup>th</sup> Oct	<i>Soldiers' Tale</i>
2 <sup>nd</sup> Nov	<i>Christians' Tale</i>
7 <sup>th</sup> Dec	<i>Artists' Tale</i>

Stamps and Presentation packs available from your local Post Office, please ask for details

**WINTER OPENINGS**  
**Bottom Shop**  
will close at 12 noon on Weds & Sun

## DIARY DATES - all entries are FREE - Tel 884201

### 1999 Mobile Library Visits

**Route 3**  
(Downholme, Grinton, Marrick, Marske)  
**WEDS:** 10<sup>th</sup> Feb; 3<sup>rd</sup> & 24<sup>th</sup> March

**Route 7**  
(Fremington, Reeth, Langthwaite, Whaw)  
**MON:** 8<sup>th</sup> Feb; **TUES:** 9<sup>th</sup> & 30<sup>th</sup> March  
(note new times - pick up a leaflet for details)

**Route 9**  
(Healaugh, Gunnerside, Low Row, Harkerside)  
**THURS:** 18<sup>th</sup> Feb; 11<sup>th</sup> Mar; 1<sup>st</sup> Apr

**Route 13**  
(Westonesdale, Keld, Thwaite, Muker)  
**WEDS:** 3<sup>rd</sup> & 24<sup>th</sup> Feb; 17<sup>th</sup> March  
*This information was correct at the time of printing. The staff on the Mobile Library will be happy to help with any queries or*  
Tel: 01609 776192

### PLEASE NOTE

There will be no mobile library visit on  
*Tues 16<sup>th</sup> Feb* as the vehicle will be undergoing essential servicing. A replacement visit has been arranged for **MON 8<sup>th</sup> FEB**

### RICHMONDSHIRE MOBILE VOLUNTEER BUREAU

follows the Library Van and routes and visits  
Reeth on alternate Fridays, (next 12<sup>th</sup> & 26<sup>th</sup> Feb)  
for full details Tel: 822335

### WINTER OPENINGS

Reeth TIC & National Park Centre  
will only be open 10am - 4pm Sat & Sun  
(Planning Surgeries are still being held on  
Monday 11am - 1pm)

### REETH POST OFFICE & BOOKSHOP

is now closed on Sundays.

Open: Mon - Sat 9am - 5.30pm

**DEADLINE DATE for MAR Issue**  
**Mon 15<sup>th</sup> Feb**

## ELITE CINEMA

at **LEYBURN**

(Tel: 01969 624488)

### FEB Film Programme:

4<sup>th</sup> - 6<sup>th</sup> at 5.30pm & 8pm (6<sup>th</sup> - also 3pm)  
"Babe - Pig in the City" (U)  
11<sup>th</sup> - 13<sup>th</sup> at 5pm & 8pm  
"The Mask of Zorro" (PG)  
18<sup>th</sup> - 20<sup>th</sup> at 3pm & 5.30pm  
"The Prince of Egypt" (U)  
18<sup>th</sup> - 20<sup>th</sup> at 8pm only  
"What Dreams May Come" (15)  
25<sup>th</sup> at 5pm and 8pm  
"The Governess" (15)  
26<sup>th</sup> & 27<sup>th</sup> at 5pm & 8pm  
"Dancing at Lughnasa" (PG)  
4<sup>th</sup> March at 5pm & 8pm  
"The Land Girls" (12)  
5<sup>th</sup> & 6<sup>th</sup> Mar at 5pm & 8pm  
"Little Voice" (15)

ALL TICKETS at 5pm are ONLY £2.50!

Kid's Films - ALL Tickets ONLY £2.50!

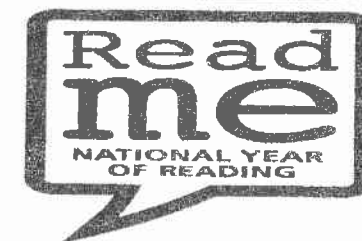
Evenings: ADULTS £4;

OAP's U16's & Students £3 - and remember

BUY 10 Evening Tickets and SAVE £5!

**Advance Bookings Available**

Box Office Open 2pm - 10pm Thurs - Sat



**February** Search and Read  
Reading through the Internet  
**March** Sports Reading  
Be a sport - Read all about it

## DIARY DATES - all entries are FREE - Tel 884201

### FEBRUARY

- 1<sup>st</sup> Dales Ladies - Open Evening - cancelled  
 4<sup>th</sup> Reeth YFC - Talk by K Iveson on Flowers  
 5<sup>th</sup> Reeth Show AGM - Reeth Memorial Hall 7.30pm  
 6<sup>th</sup> Richmondshire Subscription Concert - "The Kalona Twins" (Guitar Duo) at the Kings Head Hotel, Richmond. Details Tel: 01677 450366  
 6<sup>th</sup> Pie & Pea Supper Buck Hotel - Richmondshire Conservative Association Swaledale & Arkengarthdale Branch - The Rt Hon William Hague MP will be present. Tickets tel: 884267 or 886214  
 8<sup>th</sup> Two Dales Gardening Club - The Yorkshire Wildlife Trust with Mrs D Millwood  
 10<sup>th</sup> Parish Council Forum with County Council Environment Unit (inc Highways) Thornborough Hall, Leyburn  
 11<sup>th</sup> Melbecks Society - "Aristotle to the Hubble Telescope" a guide to Astronomy with Prof. Geoff Marr  
 11<sup>th</sup> Reeth YFC - Stockjudging  
 12<sup>th</sup> Grand Valentines Dance - music by "Sound Force" from Darlington, Gunnerside Village Hall. Tel: 668220 or 886235  
 14<sup>th</sup> Muker Sunday School - 4pm Muker Public Hall  
 17<sup>th</sup> Luncheon Clubs AGM 2pm Muker Public Hall  
 18<sup>th</sup> Low Row Luncheon Club meet Punch Bowl 12.30pm  
 18<sup>th</sup> - 20<sup>th</sup> Feetham Fools - present their version of "Cinderella" in Low Row Institute. Tickets Tel: 886235  
 18<sup>th</sup> Gunnerside WI Pie & Pea Supper followed by a sing-along with Betty Rutter  
 18<sup>th</sup> Reeth YFC Inter-Club Quiz  
 19<sup>th</sup> Reeth Millennium Meeting - Memorial Hall 7.30pm  
 22<sup>nd</sup> Langthwaite Luncheon Club 1pm

- 22<sup>nd</sup> Reeth & District Angling Club AGM, Buck Hotel 7.30pm for 8pm  
 22<sup>nd</sup> Reeth PC Meeting  
 23<sup>rd</sup> Muker PC Meeting  
 25<sup>th</sup> Muker Luncheon Club 12noon.  
 26<sup>th</sup> "Educating Rita" by Leeds Library Theatre Reeth Memorial Hall 7.30pm  
 26<sup>th</sup> Dales Youth Sports & Community Centre Project Open Meeting. 8pm Buck Hotel, Reeth  
 26<sup>th</sup> "Phil Mason's New Orleans All-Stars" Jazz Band at the Buck Hotel, Reeth 8pm  
 26<sup>th</sup> Muker Show Annual Domino Drive 7.30pm Muker Public Hall  
 27<sup>th</sup> The Dales Embroidery Guild open meeting 2pm Richmond Town Hall

### MARCH

- 1<sup>st</sup> Dale Ladies - Chocolates for Easter with "Thorntons" of Darlington  
 2<sup>nd</sup> Arkengarthdale PC Meeting  
 3<sup>rd</sup> WEA Course - "Dales Birdlife" - start of a 6 week course, details: Tel: 884652  
 4<sup>th</sup> Reeth YFC - Ice Skating  
 5<sup>th</sup> Reeth Show Annual Domino & Whist Drive, Reeth Memorial Hall 7.30pm  
 5<sup>th</sup> Women's World Day of Prayer Service 7pm Arkengarthdale Methodist Church  
 8<sup>th</sup> Reeth Memorial Hall AGM 7.30pm  
 8<sup>th</sup> Two Dales Gardening Club  
 10<sup>th</sup> - 19<sup>th</sup> Wensleydale Tournament of Song  
 11<sup>th</sup> Reeth YFC AGM  
 11<sup>th</sup> Melbecks Society - "Wensleydale Wanderings" with Dave Coates and brief AGM  
 15<sup>th</sup> Hair & Beauty Evening Low Row Institute  
 16<sup>th</sup> Swaledale Festival - leaflet collating evening, Fremington Sunday School - volunteers needed.  
 18<sup>th</sup> Gunnerside WI - "Countryside Secrets" with Neil Gardiner  
 20<sup>th</sup> Richmondshire Subscription Concerts - Cleveland Chamber Orchestra with Caroline Dale (Cello) Conductor: Tim

## DIARY DATES - all entries are FREE - Tel 884201

Jackson - details Tel: 01677 450366

- 25<sup>th</sup> Tourism Today - what you need to know in 1999 - local tourism businesses leaflet distribution day at Tennants, Leyburn. Details 829100  
 26<sup>th</sup> "Fanny Hill" by Leeds Library Theatre Reeth Memorial Hall at 7.30pm

### APRIL

- 2<sup>nd</sup> Spring Fayre Reeth Memorial Hall  
 3<sup>rd</sup> Coffee Morning - Quaker Close, Reeth  
 4<sup>th</sup> Guided Walk - Great Pinseat & Little Punchard Head with Paul Denning, meet 10am at Surrender Bridge  
 5<sup>th</sup> Craft Fayre - Reeth Memorial Hall  
 5<sup>th</sup> Start of the 1999 season of Illustrated Talks on a Monday Evening in Fremington Sunday School starting with Major FTC Willaims "From Muker to Oxnop and Crackpot Side" plus the launch of the third booklet in the series "Walking with the Major" - full programme will be published next month.  
 10<sup>th</sup> Settle Carlisle Railway 10<sup>th</sup> Anniversary Express - details Tel: 01543 411971  
 12<sup>th</sup> Illustrated Talk "Wild Flowers in the Dales" with Tony Wood 8pm Fremington Sunday School  
 19<sup>th</sup> Illustrated Talk "Herriot Country" with Marjorie Daniels 8pm Fremington Sunday School  
 23<sup>rd</sup> WORLD BOOK DAY  
 26<sup>th</sup> Illustrated Talk "Exciting Times and Narrow Squeaks" with Major FTC Williams 8pm Fremington Sunday School  
 2<sup>nd</sup> Car Boot Sale - Parks Field, Grinton in aid of Reeth Memorial Hall and Local Charities. Tel: 884201  
 15<sup>th</sup> Western Dales District Young Farmers Rally. Tel: 822490 for details  
 27<sup>th</sup> Tan Hill Sheep Show  
 28<sup>th</sup> - 13<sup>th</sup> June SWALEDALE FESTIVAL two weeks of music and arts events around the area for full details Tel: 01969 622217

### JUNE

- 4<sup>th</sup> - 6<sup>th</sup> Swaledale Now & Then Exhibition, Reeth Memorial Hall for details Tel: 884201  
 12<sup>th</sup> 21<sup>st</sup> Swaledale Marathon - organised by the Swaledale Outdoor Club for details of the Marathon and other activities please Tel: 01325 718914

### JULY

- 13 - 15<sup>th</sup> Great Yorkshire Show

### AUGUST

- 25<sup>th</sup> Reeth Show - for details Tel: 884247  
 28<sup>th</sup> Wensleydale Show  
 30<sup>th</sup> Reeth Sports

### SEPTEMBER

- 1<sup>st</sup> Muker Show - for details Tel: 886330

### OCTOBER

- 16<sup>th</sup> "Meantime" a new North Country Theatre presentation, Reeth Memorial Hall

### JULY 2000

- 1<sup>st</sup> Muker Millennium Party - Show Field

### WEA

#### Dales Birdlife

This short course is designed to improve your bird identification skills. Local bird enthusiast, Keith Good, will introduce you to aids such as: field guides, audio tapes, video cassettes, magazines and book. Some of the six classes will be held outdoors (field trips) the rest in an informal classroom setting

Wednesday evenings for 6 weeks  
 commencing 3<sup>rd</sup> March 7.70 - 9.30pm

Reeth County Primary School

Full Fee: £18 Concessionary Fee £13.40

Enquiries: Ray Wright Tel: 884652

Richmondshire Conservative Association

Swaledale & Arkengarthdale Branch

PIE & PEA SUPPER

Sat 6<sup>th</sup> Feb at the Buck Hotel Reeth

The Rt Hon William Hague MP will be present

Tickets: Tel 884267 or 886214

# CHURCH SERVICES

## in ARKENGARTHDALE and SWALEDALE

### 7th February

9.15am	St Mary's Muker <i>Eucharist</i>
10.30am	Gunnerside Methodist Low Row URC <i>Communion</i> Reeth Methodist <i>Family Service</i>
11.00am	Reeth Congregational St Edmund's Marske <i>Family Eucharist</i>
11.15am	Holy Trinity Low Row <i>Eucharist</i>
2.00pm	Keld URC
2.30pm	Low Row Methodist Muker Methodist <i>Communion</i>
4.00pm	St Andrew's Grinton <i>Evening Prayer</i>
6.30pm	Reeth Congregational Reeth Methodist <i>Communion</i>

### 14th February

9.15am	St Andrew's Grinton <i>Eucharist</i>
9.30am	St Michael's Downholme <i>Holy Eucharist Rite B</i>
10.30am	Reeth Methodist Low Row URC
11.00am	Reeth Congregational St Edmund's Marske <i>Holy Eucharist</i>
11.15am	St Mary's Arkengarthdale <i>Eucharist</i>
2.00pm	Keld Methodist
2.30pm	Arkengarthdale Methodist Low Row Methodist <i>Communion</i> Gunnerside Methodist Muker Methodist
4.00pm	St Mary's Muker <i>Eucharist</i>
6.30pm	Marske Methodist Reeth Congregational Reeth Methodist

### 21st February

9.15am	St Mary's Muker <i>Eucharist</i>
10.30am	Richmond Methodist <i>Circuit Service</i> <i>President of Conference</i> Low Row URC
11.00am	Reeth Congregational St Edmund's Marske <i>Holy Eucharist</i>
11.15am	Holy Trinity Low Row <i>Eucharist</i>
2.00pm	Keld URC
6.30pm	St Mary's Arkengarthdale <i>Evensong</i> Reeth Congregational Reeth Methodist



### 28th February

8.00am	Holy Trinity Low Row <i>Eucharist</i>
9.15am	St Andrew's Grinton <i>Eucharist</i>
9.30am	St Michael's Downholme <i>Holy Eucharist Rite B</i>
10.30am	Low Row URC Reeth Methodist <i>Communion</i>
11.00am	Reeth Congregational St Edmund's Marske <i>Morning Prayer</i>
11.15am	St Mary's Arkengarthdale <i>Holy Communion 1662</i>
2.00pm	Keld Methodist
2.30pm	Arkengarthdale Methodist <i>Communion</i> Gunnerside Methodist Muker Methodist
6.30pm	Marske Methodist Reeth Congregational Reeth Methodist

## ARRIVA (UNITED) - DALESBUS

Richmond - <i>SWALEDALE</i> - (Hawes TUES only) - (Leyburn FRI only)								Routes: <b>30, 36, 202</b>			
	<b>30</b>	<b>202</b>	<b>30</b>	<b>30</b>	<b>30</b>	<b>30</b>	<b>36</b>	<b>36</b>	<b>30</b>	<b>30</b>	<b>30</b>
		SD	SH		Tu	Tu	Fr	Fr	Sa	Sa	Sa
<b>RICHMOND</b> Mkt Pl	0715	1550	1550	1735	0910	1310	0900		0740	1135	1535
Whitcliffe Place	0718	1553	1553	1738	0913	1313	0903		0738	1138	1538
<b>LEYBURN</b> Mkt Pl								1257			
Bellerby Cross Keys								1302			
Downholme								1312			
Grinton	0737	1612	1612	1757	0932	1332	0922	1322	0757	1157	1557
<b>REETH</b>	0739	1614	1614	1759	0934	1334	0924	1324	0759	1159	1559
Healaugh	0742	1617	1617	1802	0938	1338	0929	1329	0802	1202	1602
Low Row	0750	1625	1625	1810	0945	1345	0935	1335	0810	1210	1610
GUNNERSIDE Bridge	0800	1635	1635	1820	0955	1355	0945	1345	0820	1220	1620
Muker Farmer's Arms					1006	1406	0956	1356	0831	1231	1631
Thwaite						1410	1000	1400	0835	1235	1635
<b>KELD</b> Tan Hill Rd. End						1419	1009	1409	0844	1244	1644
Thwaite											
Buttertubs Rd. End											
High Shaw											
<b>HAWES</b> Mkt. Pl									<i>(Hawes - Route 130)</i>		
<b>HAWES</b> Mkt. Pl									<i>Resumes in March )</i>		
High Shaw											
Buttertubs Rd. End											
Thwaite											
<b>KELD</b> Tan Hill Rd End					1020		1010	1410	0845	1245	1645
Thwaite					1029		1019	1419	0854	1254	1654
Muker Farmer's Arms					1033	1430	1023	1423	0858	1258	1658
GUNNERSIDE Bridge	0800	0800	1635	1820	1044	1439	1034	1434	0909	1309	1709
Low Row	0810	0810	1645	1830	1054	1443	1044	1444	0919	1319	1719
Healaugh	0818	0818	1653	1837	1103	1451	1050	1450	0927	1327	1727
<b>REETH</b>	0821	0821	1656	1841	1105	1455	1055	1455	0930	1330	1730
Grinton	0823	0823	1658	1843	1107	1458	1057	1457	0932	1332	1732
Downholme							1107				
Bellerby Cross Keys							1122				
<b>LEYBURN</b> Mkt Pl							1127				
Whitcliffe Place	0842	0842	1717	1902	1126	1519		1516	0951	1351	1751
<b>RICHMOND</b> Mkt. Pl	0845	0845	1720	1905	1129	1524		1519	0954	1354	1754

SD - Schooldays, SH - School holidays, Tu - Tuesdays only, Fr - Fridays only, Sa - Saturdays only

All services are supported by North Yorkshire County Council.

Enjoy a walk? Take the Bus - see the "BUS 'n' BOOTS" leaflet available at many outlets in the Dale or from: National Park and Tourist Information Centres - (REETH TIC and National Park Centre Tel: 01748 884059 - open Nov - Mar, Sat & Sun only 10am - 4pm)

For more information on **ARRIVA (UNITED)** Bus services please Tel: **0345 124125**

**ARKENGARTHDALE** (This service operates with the support of North Yorkshire County Council) to link with the Friday Leyburn Service Malcolm Terry will be operating a service from Arkengarthdale every Friday. Please telephone 884533 before 6pm each Thursday to confirm your requirements.