

## THE BOTTOM SHOP of REETH

General Store & Newsagency open seven days a week

GROCERIES LOCAL PRODUCE FROZEN FOODS ICE CREAM CARDS  
HOME COOKED HAM - VIDEO RENTAL now available & much more...

Contact Elsie & William Whitehead on 01748 884552

### STEPHEN STUBBS ELECTRICAL CONTRACTOR

Rewires, Extractors  
Security Lighting/Alarms  
Showers, Storage Heaters  
House Inspections etc...

Tel: 01748 884686

Fax: 01748 884139

**FREE ESTIMATES**



### CLOCK WORKS

Clocks & Barometers  
Repaired, Cleaned,  
Serviced & Restored

Ian Whitworth

Reeth Dales Centre  
Reeth Swaledale  
Nr. Yorkshire DL11 6SP

☎ 01748 884088

Member of The British Watch & Clock Makers Guild

### Arkengarthdale RED LION INN

Free House • Real Ales  
Bar Meals & Snacks available all year round

☎ 01748 884218

### DAVID E. LLOYD Chartered Builders

New Building - Restoration  
Alterations - Extensions

Construction - Maintenance & Repairs

The Gables, Healaugh, Richmond DL11 6TZ ☎ 01748 884315

### NORMAN F. BROWN

Chartered Surveyors Auctioneers Valuers Estate Agents

Over 30 years experience of selling property in Swaledale.

Large database of applicants, Free valuation without obligation

RICS Homebuyers Surveys

#### Offices

14 Queens Road, Richmond N. Yorks. DL10 4AG 01748 822473

6 Bridge Street, Bedale N. Yorks. DL8 2AD 01677 422282

25 Market Place, Leyburn N. Yorks. DL8 5AS 01969 622194

### REETH POST OFFICE & SHOP

Booksellers - Stationers - Greetings Cards  
Open all day Monday - Saturday 9am to 5:30pm

**plus** Sundays - 10am to 5:30pm

Telephone & Fax 01748 884201

**"More than just a Post Office"**

### THERE IS ONLY ONE WHITE HOUSE

ANVIL SQUARE REETH  
01748 884763

### J.E.HIRD

MOBILE BUTCHER

Prime quality fresh & cooked meat  
groceries. Weekly local visits  
& Reeth Friday Market

☎ 017683 71709

### M. GUY • PLUMBING

For all your  
plumbing requirements

21 Laburnum Grove  
Richmond

☎ 01748 825640

### TREVOR J HIRD ELECTRICAL CONTRACTOR

No job too small • **FREE** estimates

Reduced rates for senior citizens

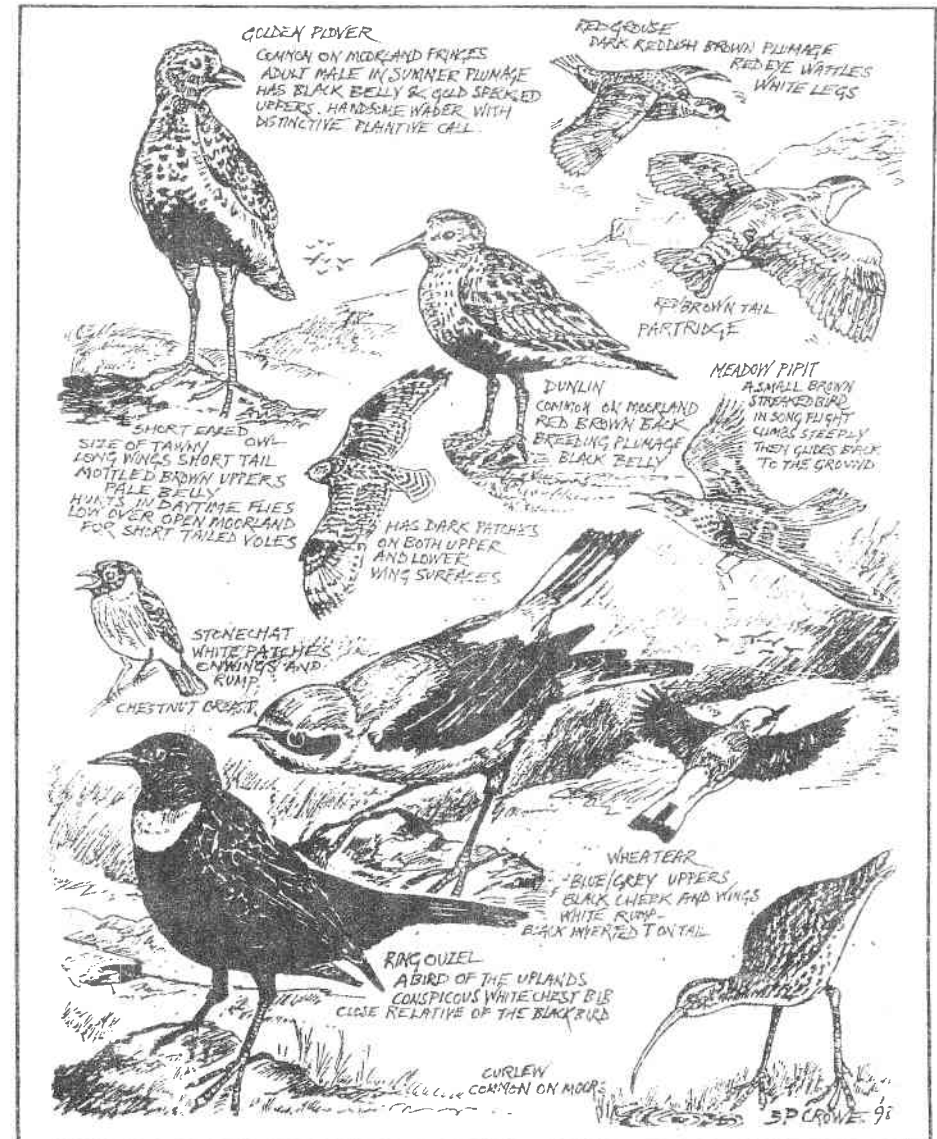
Telephone: 886886

# REETH & DISTRICT GAZETTE

Issue N°48

JULY 1999

Published 1st July 1999



The Local News Magazine for Swaledale & Arkengarthdale



**YORKSHIRE DALES**  
National Park Authority

Information Centre - Reeth

Telephone 01748 884059

Your first place of call when visiting

**Swaledale & Arkengarthdale**

Summer Opening: (Easter - Nov) 10am - 5pm

Winter Opening: Sat & Sun 10am - 4pm



## **PUNCH BOWL INN** **LOW ROW SWALEDALE**



**Open all year**

Warm, Friendly &  
Informal

Bar Meals - Real Ales

160 Malt Whiskies

B&B en-suite

Family rooms

01748 886233

**The**  
**Copper Kettle**  
  
**Teashop**

& Licenced Restaurant

**Reeth**

01748 884748

*One of the finest Teashops in Swaledale*

Single & Double Bed Mattresses & Pillows

Good Condition but do not conform to  
Fire Regulations - Free to good homes

Ring 884272

## **VISIT** **Swaledale Folk Museum**



Open every day 10.30 to 5pm  
until October 31st.

Contact the Curator

Mrs. D.J. Law 01748 884373



**•BRIDGE TERRACE•**

Bed & Breakfast in lovely 1890's village  
house. Oceans of hot water, cotton  
sheets, fresh flowers and lots of books.

**Jenny Davies**

2 Bridge Terrace Reeth

Richmond North Yorkshire DL11 6 TP

01748 884572

**GRAHAM LORD**  
**PROPERTY SERVICES**  
**HIGH ROW REETH**

Painting & Decorating  
Tiling, Patios, Paths, Fencing,  
Building repairs & maintenance

01748 884285 HOME



### "THE GARDEN HOUSE"

Anvil Square Reeth

We have pots for the garden and conservatory, patchwork, kitchenware, wood, wool and flowers.

Come and browse

also



GARDEN HOUSE  
POTTERY

Group visits to the workshop  
by arrangement

01748 884188

## HILLTOP FARM ARKENGARTHDALE

Large holiday cottage, high on the fellside  
with wonderful views.

Central heating, 2 sitting rooms

2 bathrooms, boot & shower/drying room.

Sleeps 10 - ideal for large family groups.

Wilf Bishop

1 School Lane, Kings Ripton, Huntingdon  
Cambridgeshire PE17 2NL

Telephone: 01487 773328

E-Mail: wilfbishop@msn.com

## WEIGHILL'S GARAGE

Proprietor: Steve Simpson

Reeth Richmond DL11 6TS

01748 884245

**MOT - Servicing - Repairs  
Tyres - Exhausts - Batteries**

**Your local dealer for**

**MUL-T-LOCK**

**The Ultimate Physical  
Vehicle Immobiliser**

## HIGH GREEN BOOKS of CATTERICK

Reeth Market - Fridays

Secondhand Books Bought & Sold

Telephone - Tony Pelton

01748 818703

## ROBERT STONES BOBCAT & MINI EXCAVATOR HIRE

WITH OR WITHOUT  
OPERATOR



ALSO: 4 WD TRACTOR &  
10 TON TRAILER

Pepper Hall Arkengarthdale

Richmond North Yorkshire DL11 6EH

01748 884360 or 884718

Mobile 0421 605700

## LOTTERY GRANTS FOR LOCAL GROUPS

Millennium Festival Awards for All

For an application Pack ring:

**0845 600 20 40**



## REETH SCHOOL MOVES INTO THE MILLENNIUM !

At a recent meeting of the Parent Teachers Association, it was proposed that the PTA be re-named and reformed to include all members of the community in Reeth and surrounding areas. It was unanimously agreed to go ahead with these plans which would coincide with the re-naming of the school to "Reeth Community Primary School" to comply with Government guidelines. All members of the local community are invited to join this new group - we are open to suggestions for a new title reflecting the connection with the school and local community. The purpose of the group will be to support the school by raising funds in various ways. New ideas would be greatly appreciated.

There will be an open afternoon at the school on Sunday September 19<sup>th</sup> from 2pm to 4pm when there will be a display of old photographs connected with the school and community and a chance for ex-pupils to come into school and reminisce. Cream teas will be available and lifts from the bus shelter up the hill to school will be available for those who need them. We do therefore need the loan of old photographs which we promise to take great care of or take copies if you would prefer. Please ring Ruth Guy after 6pm on 884458 or Godfrey Wilson on 886424 if you would be willing to lend photographs or need more information.

Continuing with the Millennium theme, the school has commissioned a special commemorative bone china mug which will be shortly available from the school, numbers will be limited, if you wish to reserve one please contact the school on 884308.

## Celebrating the Millennium in Reeth

Open Meeting in the Memorial Hall

Mon 5<sup>th</sup> July 7.30pm

## BUSES

There are still a number of problems with the service currently operated by Abbott's of Leeming which should be the 0715 Richmond to Gunnerside and the 1640 Gunnerside to Richmond on school weekdays. Effectively these services are, apparently, no longer operating which means that Swaledale has now lost some vital bus services.

The County Council, in their wisdom, awarded the contract for these essential services as a school contract instead of a subsidised service to carry school children. They were advised of the problems this could create before the contracts were finalised and awarded but they apparently ignored representations from local Parish Councils. Since the implementation of the new contracts in April there has been numerous problems and complaints, even a petition from schoolchildren. Efforts by local Parish Councils and local County Councillor John Blackie have so far failed to resolve these problems. All there is, are assurances from the County Council that they are doing something - yet the problems get worse and the complaints increase. These bus services were long standing, reliable, and much needed services and not just for schools - **it is reassuring to note that these services will be operated in the school holidays by Arriva.** What is now effectively the withdrawal of essential rural bus services goes totally against the Government's policy of rural transport and those of the National Park.

On the subject of School Buses, one parent recently commented that there have been more problems since April with school buses operated by Abbott's than at any time in the last 13 years. Surely the time has now come for the County to act and ensure that there is a quality, reliable school bus service instead of the cheapest?

If anyone has problems, complaints or any other comments on local buses, please write to Richard Owen, NYCC Passenger Transport Officer, at County Hall, Northallerton, DL7 8AH Tel: 01609 780780 with a copy to John Blackie.

Reeth Parish Council has invited a representative from the County Council to their next meeting - **7pm Monday July 26<sup>th</sup>** - to discuss local school and bus services - an open session - to which all are invited.

**PICK OF THE MONTH!!** **GUNNERSIDE GREMLINS** *directed by Pauline Hatton*  
Audiences at the recent Gunnerside Concert were treated to a heady mix of old-fashioned and new-fangled entertainment. The hall was filled to overflowing both nights, a quart of an audience simmering in a pint-sized village hall. Eric Herring was our amiable compere, linking the varied items with wit and good humour, and Betty Rutter led us all in a happy sing-along during the interval.

We were dazzled by the pretty costumes and nimble footwork of the young dancers, our Swaledale Starlets, trained by Pauline Burrows. A full complement of eager schoolchildren gave us three delightful songs with clever percussion arrangements under the direction of Head-girl Jackie Warburton. But not only the very young were on stage - a macabre monologue by accomplished veteran performer Maurice Welford was very well received.

'Amazing Grace' performed by three Youth Club girls showed off the harmonising talents of these up and coming teenagers. John Waggett provided a contrast with his comic song 'When I'm driving tractors', written and composed after blocking traffic (including our bus service) in busy Satron.

The Gremlins Cafe sketch and the Mini-panto had the audience in stitches - and just who was that third Beverley Sister appearing with Irene and Eileen, the well-endowed, husky-voiced one? London talent scouts (or was it the North Yorks Police?) are still enquiring.....

Diane and Andrew from Muker Band gave a distinguished cornet duet and the Calvert sisters, Linda and Gillian sang 'Carolina Moon' with their usual sweetness and warmth. Gunnerside Choir under the baton of Swaledale's own Maestro, Duncan Bythell, sang with professional aplomb as always.

The WI had written their own song about their exploits and finished with one of their members cavorting on the stage in a liberty bodice and pink bloomers - obviously a reject from the next WI Calendar. Thanks to Dave Macro for closing the curtains so promptly - before Marion's knicker-elastic snapped! And finally... ..the piece de resistance was the show-stealing item billed as the *Battered Buttocks or the Fish-and-Chippendales*. Local young blades (plus Denys in his own variety of snazzy underwear) were received with uproar as they gave an eye-popping unforgettable performance! Farming going down the drain? No problem, lads, a second career beckons for you all on the stage. And don't under-insure yourself, Denys.

Helpers beavered away all night, sweating away behind-the-scenes, and a generous supper materialised downstairs (thanks to the WI) to revive and refresh the overheated (ie: everybody). The Gunnerside Concert Party could well be on the road for a British Tour during the Millennium Year, provided Malcolm's bus is available.

Thanks to all Pauline Hatton's careful preparations, **EVERYTHING WAS ALL RIGHT ON THE NIGHT.**  
In fact it was purrfect!

MT & MC

#### Some Poems from Gunnerside School:

##### *Swaledale*

In Swaledale the dry stone walls are guarding  
the fields

The trees stand to attention.

The tall hills are reaching for the sky.

All the birds roam the sky.

Some of the lonely farms are very big.

In Swaledale sometimes the sun is bright.

Sometimes the sun is hiding behind the hills

*Michael Waggett Age 9*

##### *The Dales*

There are big steep hills that loom overhead,  
Hear the dogs howling bark and a farmer  
shouting

Everlasting long Swale winds its way round  
every rock and bump.

Dry animals snug in cosy warm buildings,  
And the sheep huddle up to a craggy wall back.  
Lambs bounding playfully in the spring fields.

Emergencies are more work for the brave fell  
rescue.

Snow blocks the winding roads so we are cut  
off.

*Adam Hunter Age 10*

#### Dales Ladies

there was good turnout for the recent AGM when new Officers were elected: Chairperson Kathleen Hird; Vice Chairperson Lilian Law; Treasurer Margaret Woodward; Secretary Wendy Gardner; Press Secretary Jennifer Attwood; Hostess Organiser Sylvia Barnett; Memorial Hall Rep. Molly Kemp. The evening concluded with the now traditional Pie & Pea Supper and thanks were expressed to the evening's hostesses Margery Gall, Jennie Sunter and Margaret Woodward. The Dales Ladies are arranging an outing to "The World of James Herriot Centre" at Thirsk on 6<sup>th</sup> September. The outing is open for friends and family. Any person wishing to join them should contact 884113

#### FIRE CREW

Reeth Fire Crew would like to thank all who helped to achieve their goal for the purchase of Fire Crash Rescue Equipment. The effort put in by individuals and organisations alike was tremendous, and the target of £6000 was quickly achieved. It has been decided to leave the Fund open for the time being as the rescue equipment purchased can be improved with additional tools. The Crew are now coming to the end of their thorough training on its use and the gutting gear will soon be operational on the Fire Tender. Any scrap vehicles would be gratefully received to assist the ongoing training programme. Some demonstrations are planned over the summer months, probably on Reeth Green.

*Sub Officer Bob Raw has retired recently after a staggering 37 years and 192 days service making him the longest serving Retained Fire Officer in the Country.*

*A new Sub Officer has yet to be appointed.*

#### Save the Children Fund

a grand total of £439.09 was raised from Swaledale during the recent Save the Children week. Fremington £28.30; Grinton £65.86; Gunnerside £32.90; Healaugh £33.58; Keld & Upper Dale £37.70; Low Row £86.41; Marrick £33.93; Muker £64.93; Reeth £55.48. Thank you for all your help.

#### DIG

Dales Initiative Group for Attracting Resources and Services - in June 1998 investigations were started with regard to improving the indoor facilities for the young people of Swaledale and Arkengarthdale. Approaches were made to various funding and development organisations and it was apparent that a wider need for all age groups in the community was present and that the two dales - Swaledale & Arkengarthdale - was recognised as being under resourced. A group of local people keen to get something done about improving these resources formed the a group in December 1998 which has eventually become known as "DIG." The Group were recently awarded a grant of £500 from the North Yorkshire Small Projects Fund. The Group aims to attract additional resources to the locality where need has been identified and the whole community will benefit. To this end "DIG" will: undertake a feasibility study to determine the level of and identify specific community generated resource needs; and to enhance the desirability of living and working in the area. The project will seek support and advice from a wide range of statutory and voluntary agencies as appropriate to support its aims; sources of financial assistance; appropriate representation on the management committee; organise and carry out a number of community based events to raise its profile; locate a fixed base from which to administer operations; develop a phased plan for the implementation of any projects; undertake to inform the community via a regular newsletter and press releases of all progress. Future events include a Treasure Hunt during July with the winner being announced at a Barn Dance and Barbeque at Cogden Hall on July 31<sup>st</sup> (Tickets now available from various Committee members and Reeth Post Office) and an Open Meeting in August. Committee members include: Chairman Ian Matthews; Secretary Margarita Owen; Treasurer Peter Smith; Lawrence Allison; Stuart May; Richard Birks; Rev Tim Tunley; Rev Andrew Bell with representatives from Parish Councils and other local organisations.

### Spice and Milk Sports - Low Row - 19<sup>th</sup> June

Arriving at Rowleth Bottom in windy, cool conditions and the constant threat of rain, we sat in line with other cars waiting for the Fancy Dress competition to commence. Comments of "Where's the beer tent" were heard! Gradually brave souls emerged, huddled, but not a complaint uttered. Judging was difficult. The ingenuity of costume, topical events and the Royal Wedding were popular, with Aslan, the Lion looking most warm.

The Sports started with the under fives dashing 50 yards, not sure of the start signal and trying to run straight towards the tape. There were huge smiles as prize money was pushed into their hands. Older children were more competitive and keen to win, Cows grazed peacefully in the background as events took place, knowing, I'm sure not to stray on the field! The high jump was very exciting, with each notch holding the cane carefully noted, as a long run -up was indicated. The boys' produced a football and a game started until calls for "Spice and Milk" were heard and delicious gingercake, fruitcake and milk were served.

Living in Low Row for some years it was my first visit with our grandchildren to the traditional Sports. I congratulate and thank the Committee for making such a happy event, and now it is a 'must' for the coming years. *Yvonne Howard*

**Spice & Milk Sports** - The Annual Spice & Milk Sports were held on 19<sup>th</sup> June at Rowleth Bottom with a good turn out of fancy dress; competitors and spectators. Mr & Mrs Smythe were the judges for the Fancy Dress and winners were: Scott Dicks; Michael and Nigel Wagget; Calum and Adele Sunter; William and Rebecca Porter; Martin and Laura Calvert; Claire, Robert and Kevin Sunter; Matthew Essarte; Christopher and Beccy Westgarth; Beth Calvert; Katy, Suzannah and Jayne Barningham; Kelda and Kirra Roe; Arabella and Rosmond Pears; Nicola and Louise Cowie. The overall winners of the Cup were Arabella and Rosmond Pears. Thanks are expressed to everyone who organised the event and helped on the day. Next year will be a special event to celebrate the Millennium

### Fanny Hill

Leeds Library Theatre Touring Company presented their entertaining production of "Fanny Hill" - the memoirs of a woman of pleasure by John Cleland. "A thoroughly entertaining mix of erotic, entanglements, murder and press ganging" in the Memorial Hall last Friday. The setting was Newgate Prison in the middle of the 18<sup>th</sup> Century with characters reminiscing the exploits and tragedies of Fanny Hill. Characters: "Young Man" - Michael Brooksbank; "Phoebe": Sarah Binless; "Gentleman": Roger Cook; "Oddeye": Clementina Herrero A polished production which is ideal for village halls.

*Once again this Company had ventured into Swaledale to perform to a small but very appreciative audience - a pity more couldn't make the effort to support Live Theatre in the dale.*

### LETTERS

At last I've got around to say "many thanks" to Reeth. We had a lovely holiday in May catching the good weather! What a beautiful area, we stayed in a cosy cottage which was perfect. We enjoyed numerous walks and found things to visit and fill in our weeks stay. We were welcomed by everyone at both churches in Reeth and the "Pop in" on the Friday morning was so interesting - even to see the new Calendar for 2000 by the "W! Ladies!" We found everyone so friendly and trustworthy each shop we visited. I even managed to find a farm selling duck and goose eggs - so home they went as may holiday 'treat.' We must have stayed a couple of hours in the Folk Museum that was so fascinating and all the units in the "Dales Centre", the assistants were very helpful - finding time to chat to us, even the man in the Brymoor Ice-Cream teashop gave us a taste of that wonderful ice-cream to see which we liked. How nice to feel so relaxed after a wonderful holiday, and many thanks to Mrs Walker for such a cosy cottage. Hope to be back in Reeth next year.

Thanking everyone  
*Mr & Mrs Marsh, Hull*

### Midsummer Celebrations

at Gunnerside Methodist Chapel are on Sunday 4<sup>th</sup> July. Mr Howard Thomas of Carlton in Coverdale will be the Preacher at both services. The afternoon Service will begin at 2pm with items by the children of Gunnerside Primary School. The evening Service begins at 6pm with Community Singing, led by Mr David Rutter followed by the Service at 6.30pm with items from the Gunnerside Choir, conducted by Dr D Bythell. Supper will be served after evening service and everyone will be very welcome.

### Senior Citizens

this year's Reeth Senior Citizen's outing will be to Skipton and a Mystery Tour on Saturday 17<sup>th</sup> July. Anyone wishing to go should contact either Mrs H Guy or Mrs A Alderson before July 12<sup>th</sup>.

### Christian Aid - UPPER SWALEDALE & ARKENGARThDALE COMMITTEE

Christian Aid Week House to House collections in the following villages raised a total of £1202.47 - a record collection for the Committee!

Arkengarthdale £64.12, Arkle Town £34.49, Fremington £58.61 Grinton & Harkerside £133.13, Gunnerside £80.76, Healaugh £51.56, Hurst £25.73, Keld & Angram £56.25, Low Row £224.69, Marrick £15.43, Marske £59.75, Muker & Thwaite £99.44 Reeth £298.51.

Altogether during Christian Aid week a grand total of £1485 was raised. This was made up of the House to House collection listed above, £89.49 midweek Church Service held at Keld URC on 12<sup>th</sup> May, £120.25 Cake stall on Reeth Green and £72.79 Coffee Morning at the Drop in Centre at Reeth Methodist Chapel - both on 14<sup>th</sup> May.

Thanks are extended to all House to House collectors and especially to residents of the Dales who donated so generously.

### THANKS

Maurice and Jean Guy wish to thank family, friends and neighbours for the presents, flowers, card and good wishes received on the occasion of their recent Ruby Wedding Anniversary.

### The Kings Head, Gunnerside

Pete and Linda, the new Lamdlord and Lanlady wish to welcome old and new customers to sample our warm and friendly welcome. We are now open all, everyday for good food and drink.

### KELD

An event took place at Keld on Sunday, 20<sup>th</sup> June, that will long be remembered and talked about. This was a reunion of past scholars and their partners of Keld Congregational School which closed in 1973 when there were only four scholars left. One hundred and sixty people from as far afield as Belgium, Scotland and London met for tea, a look round their former school to reminisce with school friends. No event at Keld is complete without a sing, so Mr Chris Alderson and Mr Laurie Rukin led the singing of hymns and "Beautiful Swaledale" to conclude a happy gathering.

The *Reeth & District Gazette* lost one of its most avid and faithful readers recently with the death on 10<sup>th</sup> June of Mrs Violet Lillian Hodgson. Until prevented by failing health, Mrs Hodgson was a regular visitor to her son Paul's home in Gunnerside. Living in Stockton on Tees, Mrs Hodgson read the *R&DG* from cover to cover each month, and felt this kept her in touch with events in the Two Dales. Mrs Hodgson who was eighty-five, will be sadly missed by her family in Swaledale and Teesside.

### SWALEDALE FESTIVAL

The Director, Elizabeth Carter, and the Festival Committee express a hearty "Thank-you" to everyone who supported this year's Festival. Especially all the volunteers, box-office staff, venues, artists and those who contributed in any way to make it another successful and happy event.

### Stephen and Jackie Calvert

would like to thank everyone for their kind gifts and cars received on the birth of their son James Robert, a welcome brother to Katherine



## BLACK BULL CODGERS AIM TO SCORE - AGAIN!!

The Over-Aged Footballers of Reeth's infamous *Black Bull Hotel* have arranged a second annual *Charity Football Match*, following the massive success of last year's event. The rain-hit match last July raised a total of £870, so the organisers are hoping to get into four figures this year.

The match, like every other fund-raiser at the Black Bull, raise much needed funds for a worthy Yorkshire Charity, *Martin House Hospice*, which is based in Boston Spa.

This year the match will be played for the *Kathryn Hopwood Memorial Trophy*, in the hope that the event can become an ongoing memory of the late pupil of Melbecks Gunnerside Methodist Primary School, whose parents were helped by Martin House during and after their daughter's fight against leukaemia.

Once again the occasion will take place on the school field at Gunnerside and will be played between *The Black Bull Codgers* and the *Reeth Young Giants*, both 'scratch' teams brought together for this occasion. Last year, the *Giants*, who were all under 15, were leading 3-0 after only 15 minutes, leaving the *Codgers* wondering what had hit them. The old fogeys managed to pull back to 3-3 by half time and then exchanged goals with the youngsters until the final score after 90 minutes was 6-6!

The Golden Goal was then brought into play and the *Junior Giants* eventually triumphed 7-6 after 104 minutes of fun-filled football.

The Blue Card was introduced to the referee's arsenal, which is a financial penalty card imposed for swearing, cheating and any other misdemeanour at the ref's discretion. The whole *Junior* side were 'blue-carded' for fielding too many players when the *Codgers* realised they were playing too many *Juniors* at once!

Once again there will be an appearance by the local gastronomic legend 'Baldy Brian' Sedgwick and his wonderful barbeque, with food donated by Bob and Liz Sykes and others to raise even more cash. We are all looking forward to more of Gary Woodward's famous Fireburgers!

After the game it will be back to the Black Bull for post-match analysis, well-earned drinks and

the Martin House raffle. This year there will also be a sing-song and general knees-up with accompaniment courtesy of Rob Lowson, whose dad Dave from Grinton Lodge is this year's 'Dodgy Ref in Fancy Dress' volunteer!

If you would like to come and help a very worthy cause and have a great time, be at Gunnerside School pitch from 2pm on Sunday 11<sup>th</sup> July, bring all your friends and be prepared to get into the spirit of this fun filled day out!

If you are under 16 and would like to play for the *Giants* this year, please let the Black Bull know and they will help to arrange it. The only qualification is that you get sponsored for as much money as possible to help *Martin House*. This year we are hoping to have an appearance by Reeth Brass Band, to entertain the crowd and join in the fun. This does depend on the band's busy schedule, but they are doing their best to come up with the music before the game and at half-time. Watch the "Gazette" closely as we keep you warned of this and other features of the day!

If you would like any further information about the event, or how you can be part of it, call the Black Bull on 884213 and speak to either Chris Jordan or Paul Claxton, the organisers.

This year let's hope the weather can help us double last year's crowd of over 100 to over 200 and make it a real party atmosphere! CJ

## Tour 2000 - Richmond School

On Sunday 4<sup>th</sup> July Richmond School musician will be celebrating American Independence Day in the Friary Gardens, Richmond. Come and listen to live music, join in the line dancing and enter the "Rhythm of Life" raffle. The raffle is for a specially commissioned painting by Mackenzie Thorpe, entitled "The Rhythm of Life" and kindly donated by the artist for the Tour 2000 fund. Tickets cost £1 and the winning ticket will be drawn at the Georgian Festival in December.

## RETIREMENT

Rev George Hemmings, Minister for the Congregational Church in Reeth, as announced his retirement from 30<sup>th</sup> September

## Swaledale Parish Annual Meeting

The Revd Timothy Tunley has completed his first year of ministry as the Vicar of Swaledale. He and his wife, Anne, have endeared themselves and become popular personalities to the population of Arkengarthdale and Swaledale. The success of this first year of ministry became apparent at the Annual Parochial Meeting when a review of the year was presented. A satisfactory financial position was reported, due in small measure to the support and help given by the four constituent churches of the parish. The total number of communicants (a statistic on which the Church of England bases its strength) was 3284 (an increase on last year.) The increase showed on both Sunday and Weekday services and also in the numbers of Baptism and Weddings. The four churches of the parish had been well maintained throughout the year with well attended services particularly at Christmas, Easter and Harvest Thanksgiving. A Sunday School opened at St Mary's, Muker, showed very successful progress.

The Parochial Church Council (PCC) elected for the current year comprises the Churchwardens, Mrs G Atkinson; Mrs M Beckwith; Mr R Birks; Mrs E Denning; Mr R Ford; Mr N Guy; Mr G Lundberg) And representatives from each of the four churches, viz: Mrs J Court; Mr P Denning; Mrs R Earl; Mr I Fisher; Mrs S Good; Mrs D Guy; Mrs M Guy; Mrs M Humphries; Mr M Hutchinson; Mrs E Lundberg; Mr D May; Mrs A Metcalfe; Mrs J Smyth; Dr J Wilkinson; Mr G Wilson. Mr N Guy was elected Vic Chairman, Mr C Purver Secretary and Mrs P Purver Treasurer. Mr I Fisher with Mr and Mrs Purver were elected representatives to the Deanery Synod. Mr Godfrey Wilson who had been a Churchwarden for many years decided not to seek re-election as a Churchwarden and thanks were conveyed to him for his long and valued service. He remains a member of the PCC.

Financial and administrative responsibilities are vested in the PCC under the provisions of the Synodical Government Measure 1969. Provision is also made for each constituent church to manage its own affairs so that the churches in Swaledale Parish elect their own District Church Committees, reporting as required to the PCC.

## SHARECARE in RICHMONDSHIRE

Sometimes you wonder how people cope with caring for an ailing and ageing parent, a chronically ill partner or a child who needs constant attention. However much you love the person you are looking after you must sometimes long for a break, a time to call your own, an escape to a different environment.

In Richmondshire ShareCare exists to provide that break. It is a network of locally based volunteers who make themselves available to give relief care so that a regular carer can have some time off to use in any way he or she pleases. A lot of trouble is taken to make sure that the volunteer selected for a particular situation is suited to it. This is achieved by the ShareCare Organiser meeting the regular carer and making a thorough assessment of the needs of the dependent person. Arrangements are then made for an appropriate volunteer to provide the relief care that has been agreed.

For a number of reasons the demand for the service that ShareCare offers is on the increase. Consequently more volunteers are always needed. Anyone who can spare a few hours every now and then, who is a good listener, who has some awareness of what it is like to be restricted by age or illness, is likely to make a good "ShareCarer". A prospective volunteer would start by having a discussion with ShareCare's Director when any queries can be dealt with. If the potential recruit then decides to go ahead and is accepted he or she is given training and has ongoing support from the ShareCare staff and management. The amount of time any volunteer gives is entirely up to the individual.

Although volunteers receive no payment for their time the cost of travel both for training and for going on caring assignments is paid.

This kind of voluntary work is often thought of as a female preserve and it is true that the majority of volunteers are women but in fact men are just as welcome and just as needed as volunteers. Quite often a man is better suited to a particular situation than a woman would be. It is not only women who can care.

Carers who might find the ShareCare Service helpful are sometimes referred by their doctor or by Social Services, or they can refer themselves. Any approach will be listened to with understanding and sympathy. The ShareCare Director is Barbara Paterson and anyone who would like to become a volunteer or who would like to use the service can contact her on 01677 45037. Robin West

*NOTE Robin West, one of our longstanding volunteers, has written the above and all I wish to do is emphasise what he has said. I am the Secretary of ShareCare and, although our Director is very willing to help as indicated, I am able to act as "first contact" if required. Peggy Purver (01748 886400)*

### Dales 1999 Environment Awards

There is still time to enter your environmental project or initiative for this year's Yorkshire Dales National Park Authority Environment Awards. The categories are: schools, farmers, landowners and businesses, and community groups. The Awards are to reward and highlight those projects that have made a significant contribution during the last two years towards enhancing environmental quality or understanding in the Yorkshire Dales. Previous entrants have included village and building enhancements, creation and protection of wildlife habitats, quality building design, raising environmental awareness in schools, sustainable measures and rural diversifications schemes. Last year's winners included Hazel Brow Farm. For full details and an application form please contact Andrea Burden on 01756 752748, but hurry, closing date is 9<sup>th</sup> July for schools, and 31<sup>st</sup> August for all other categories.

### Barbecue & Live Music

Friends of Arkengarthdale School invite you to their Summer BBQ at the CB Inn with Live Music on Friday 3<sup>rd</sup> September at 8pm. Tickets: Adult £11 - Children £3 are limited to 100 and are available from Allison 884368; Katy 884208; Richard 884655; Gill 884405; Adele 884808 and Tracy 884061

### RICHMONDSHIRE DISTRICT COUNCIL BEST KEPT VILLAGE COMPETITION 1999

The preliminary judging of the villages entering the Best Kept Village Competition 1999 will take place during the first two weeks in July. There will be four classes and four prizes awarded.

The Council hope that your village will make a communal effort and also enlist the help of young people in the village with the aim of being judged the Best Kept Village in the Richmondshire District for 1999.

Listed below are details of the items to be judged:

1. Condition of Village Green, Centre and/or Main.
2. Absence of litter generally.
3. Condition of Hedges, Fences and Walls, especially those adjacent to and surrounding Building & Private Gardens.
4. Condition of Churchyards, Burial grounds and Chapel grounds.
5. Condition of flower and vegetable gardens.
6. Appearance of Garages, Outbuildings and Sheds.
7. Condition of Farmyards and Barns in the Village.
8. The cleanliness and absence of rubbish in streams flowing through the Village.
9. Condition of Village Halls, other Public Buildings and War memorials and surrounding area.
10. Condition and cleanliness of bus shelter and surrounding area.
11. Cleanliness of telephone kiosk and surrounding area.
12. Appearance of Post Office and Shops.
13. Appearance of Inns, Hotels, Public Houses and Guest Houses.
14. Condition and situation of seats.
15. Condition of notice boards and display of public notices.
16. Display of tubs and hanging baskets at private houses, public houses, shops, etc.

BONUS MARKS will be awarded for items of special merit to a maximum of 10 (No ½ marks will be awarded.)

### PARISH COUNCIL NEWS ARKENGARTHDALE

Street Light - an additional street light for Arkle Town has been requested.

No Parking signs are to be placed by the turning area in Arkle Town.

Walk - a Boundary Walk has been proposed as part of local Millennium Celebrations.

#### MARRICK

have successfully campaigned for the Marske, Marrick, Hurst bus Service on Saturdays. Following certain administrative difficulties the service will now start on Sat 31<sup>st</sup> July and will be operated by Arriva. The contract is for three years

#### REETH

Flag Pole is to be repaired / replaced.

Grass Cutting - residents need to be aware of problems cutting the grass around the parking areas in Reeth and Healaugh. It would be appreciated if cars could be removed for the short time strimming is in progress

A grant has been made to Reeth School PTA to enable improvements to the school playing fields.

Civic Amenity - the possibility of an occasional civic amenity type skip for domestic waste not usually taken by the refuse collection is being explored - further details next month.

Bus Services concern has been expressed about problems with certain bus services. A representative from the County has been invited to attend the next meeting on 26<sup>th</sup> July. Other PCs are also to be invited,

#### GENERAL

##### River Regeneration Project

A Fun Weekend is being organised for the weekend of 7<sup>th</sup> & 8<sup>th</sup> August when encouragement will be given to help clear the river bank of rubbish. Skips will be placed locally. Activities will probably include a picnic or BBQ. Further details from Simon Lovell on 884060

#### PUBLIC MEETING

Northallerton & District Community Health Council invite you to a Public Meeting on Monday 12<sup>th</sup> July at 2.15pm in Colburn Village Hall where your views would be welcomed. Further Information Tel: 01969 770727

Annual Meeting - Richmondshire Branch of the Yorkshire Councils Local Association 7.30pm Mon 12<sup>th</sup> July in Reeth Memorial Hall

### Parish Council Representative to Yorkshire Dales National Park

Cllr Harold Brown, Chairman of Grinton PC has been returned, unopposed, as the Parish Council nominee for Swaledale & Arkengarthdale. His appointment to the National Park Committee has since been confirmed by Secretary of State for the Environment.

Cllr James Kendall has retained his nomination as a Richmondshire District Council representative

Council Tax concessions for Second Homes. Below is a copy of a letter recently forwarded to Mrs Hilary Armstrong MP, the Minister for Local Government and Housing on a topical local subject, by a concerned Upper Dales resident:

"We own a very small 2-bedroomed self catering cottage, which is attached to our permanent home, and have just received a demand for £726 as a Business Rate for our cottage. In this village there are a number of second homes, for which the owners pay only half Council Tax and we understand that there are no plans to change this tax liability during this Parliament.

It is bad enough that this concession encourages the ownership of second homes, which kills the villages in this and similar areas. However, additionally, as you are no doubt aware, these people can let their homes on a commercial basis for up to 20 weeks in a year, without paying any extra tax to the Council. Nor do they have to pay for having their dustbins emptied, which last year cost us an extra £45 on top of the business rate. We think that you must agree that this is most unfair since it takes trade away from those of us who are letting as a business and paying the appropriate taxes. We feel that the half Council Tax concession should be removed because of the effect on the villages described above, but in any case the ability to let these cottages without paying the owners' fair amount of tax should ease because of the unfair competition involved.

You may be interested to know that a local cottage-letting agency states in their advertisement "we will happily register cottages that are limited by Council Tax rules to 20 weeks letting."

Your comments would be appreciated.

## **Analysis of Performance and Prospects - Company Report on YDNPA Plc**

Established: Independent Company established in 1997, previously wholly-owned subsidiary of NYCC  
Board: 26 Members Staff: 110 Turnover: c£4.6M  
Products: Planning, information and interpretation, general conservation functions.  
Shareholders: 18,000 resident stakeholders Market: 8 million annual visitors.

### **Background:**

From 1974 to independent status in 1997 the company pursued a generally conservative policy. Its product base was staid and showed signs of age; as did many of its long established senior staff. A lack of corporate direction stemmed directly from the absence of any overall management strategy or plan. In an effort to add a bit of glitter, to an otherwise lacklustre performance, there has been recent investment in flagship projects, eg: the Dales Countryside Museum. Projected return on capital is poor with budgetary provision for revenue support. There is a concern that other essential projects will thus be denied funding.

The general market perception was of an under-performing company ripe for a shake-out. Any residual buoyancy in the shares could only be attributed to a favourable view of the underlying asset value of the brand image.

### **Restructuring:**

Shortly after achieving independent status the Board appointed a new Chief Executive. Her track record and the speed with which she started on restructuring the company led to an immediate hike in the share price. New staff appointments were put in train to bolster the expertise base and thus create a platform for the development of new products. A lack of revenue production and marketing was to be overcome by using the company's reputational asset to extract external funding and sponsorship. However these plans have run into difficulties.

### **PR Disaster:**

Recent problems with its staple planning product, in which the company (fortunately) holds a monopoly position, has been a set-back to expansion. Staff have become so concerned with poor quality performance that they have instituted a double quality check (the Planning Referral process.) This has not been entirely successful because this month a high profile model has had to be recalled. Market pundits have even suggested that the company should divest itself of this product line so that it can better concentrate on its core activities.

Trading in shares was briefly suspended recently, following the announcement that the Chairman of the Board had been arrested on suspicion of fraud against the company. Somewhat ill-advisedly he has not chosen to resign. Unsurprisingly the company's image has taken something of a hammering in the press. We understand that there is now a stand-off between the Chairman and the Chief Executive.

### **Future Performance:**

Staff morale is at a low ebb, because of the uncertain situation. The time-scale for new product launches has slipped as external funders and sponsors have held back on their commitments. Customer confidence has also been adversely affected.

### **Share Advice:**

Stock is now in the penny share category. Anyone who still has a holding might as well hang on hoping for an upturn in fortune.

The next watershed will be the Annual General Meeting in July. If the Chairman is returned to office expect to see senior officer resignations (and claims for constructive dismissal?) In which case the company may well be on the road to receivership. On the other hand a new Chairman may signal recovery. Share prices could rise rapidly with the earlier investment in structural and staff changes showing its true potential.

Not a share for the faint-hearted.

June 1999

## **ARKENGARTHDALE SPORTS DAY**

The sun shone brightly and warm on the start of the Arkengarthdale Sports & Sheep Show and continued to be kind most of the afternoon. While thunder rumbled all around and Fremington Edge, not 3 miles away, whited over with giant hail stones, the sky remained blue and clear over Langthwaite while the Steel River International Dog Club with their canine stars from Byker Grove provided the afternoon's main show attraction. As tradition has it, the day started with the children's fancy dress parade from High Green to the sports field led by The Muker Silver Band. The entrants were this year judged by P.C. & Mrs Estersen. As usual all the costumes were of a high and imaginative standard, ranging from the familiar to the topical. The traditional races got off to a cracking and enthusiastic start at 2.15 while the band played steadily in the background and the serious side - the Sheep Show, Quoits, Clay Pigeon shooting and tent competition entry judging got underway. Mid-afternoon after the dog display the now famous Arkengarthdale Sports Day Afternoon Teas were served at a pace! Then followed two six-a-side football matches, see independent report.

The Silver Cup for the best sheep to win on points was won by Mr J.S. Porter and the Special Champion Cup for the Best Tup Hogg was won by J. Allison & Sons. I. Coates won the Open Clay Pigeon shoot, K. Donnelly 2nd & G. Smith 3rd. The Local Clay Pigeon shoot was also won by M. Irwin. Stephen Allison won the Local Fell Race, 2nd James Birks, 3rd Thomas Barningham. The Quoits were won by Richard Smith, 2nd Jonathan Stones, 3rd Lawrence Atkinson & Parkin Waller.

Results of the day in detail: Fancy dress: under 5yrs, Girls: 1 Lucy Lundberg; 2 Aislinn Smith; 3 Claire Winbush. Boys: 1 Jake Taylor-Neale; 2 Peter Wickham. Girls 5-7yrs, 1 Bethany Stubbs; 2 Hannah Hughes. Boys: 1 Daniel Stubbs; 2 Christopher Curry; 3 Joe Buckley & Peter Sparrow. Girls 8-10yrs, 1 Amy Stubbs; 2 Siobhan Smith. Boys: 1 Edward Birks; 2 Christopher Harker & Matthew Esate Sarries; 3 Carlin Peterswald & Joshua Woodward. Girl under 15, Hannah Taylor; 2 Jane Fawcett. Best Groups: Jack & Olivia Stones as Wallace & Grommet. Emily Cody & James & Louise Stones as Playdays. Champion: Hannah Taylor as a statue of a Greek Goddess.

Children's 3-D 9yrs & under, a decorated matchbox: 1 Bethany Stubbs; 2 Amy Stubbs; 3 Emily Cody. 10 & over, a vegetable person: 1 Charlotte Stubbs; 2 James Birks; 3 Micheal & Christopher Harker. Poster design for Sports Day 2000, 9 to 12yrs: 1 Charlotte Stubbs; 2 Jane Fawcett; 3 James Birks. 12 to 16yrs: 1 Jernima Stubbs. Children's handwriting, 4 & 5yrs: 1 Hannah Hughes; 2 Thalia Sparrow; 3 Bethany Stubbs. 6 & 7yrs: 1 Daniel Stubbs; 2 Peter Sparrow; 3 Darius McCall & Christopher Curry. 8 & 9yrs: 1 Amy Stubbs; 2 Joshua Woodward; 3 Matthew E Sarries. 10 & 11yrs: 1 Abigail Stubbs; 2 Christopher Harker; 3 Carlin Peterswald. Children's art, KS1 A flower collage: 1 Lucy Lundberg; 2 Peter Sparrow; 3 Daniel Stubbs. KS2 Viking ship or Warriors: 1 Edward Birks; 2 Carlin Peterswald; 3 Abigail Stubbs. Open painting or drawing: 1 B. Birks; 2 M. Barningham; 3 J. Stubbs. Photography, Class 1, From my childhood: 1 P Lewis; 2 E Lundberg; 3 S Smith. Class 2, Memorable occasion: 1 A Smith; 2 A Stubbs; 3 D Williams. Class 3, Bad weather: 1 B Lewis; 2 A Stubbs; 3 M Lewis. Flower Arrangement: 1 M Barningham; 2 A Stubbs. Local craft: 1 Jane Fawcett; 2 A Stubbs; 3 M Barningham. Baking & Cooking, 9yrs & under: Monster biscuit, Edward Birks, 10yrs & over: Fruit salad, 1 Jane Fawcett; 2 Micheal Harker; 3 Christopher Harker. Ladies, Date & Walnut cake: 1 E Lundberg; 2 J Fawcett; 3 A Stubbs. Ginger biscuits: 1 E Lundberg; 2 C Stones; 3 J Lundberg. Men's, Shortbread biscuits: P Lundberg; 2 D Harker; 3 C Allison. Cheese scones: 1 R Stones; 2 P Lundberg; 3 D Harker. Open, Jam: 1 J Lundberg; 2 M Clarkson; 3 C Stones. Lemon Curd: 1 J Fawcett; 2 A Wright; 3 M Clarkson. Savoury Quiche: 1 E Johnson; 2 J Fewcett; 3 M Clarkson. Decorated buns: 1 J Fawcett. Sheep: Aged Ram: 1 J.S. Porter; 2 J. Allison\*. Shearling Ram: 1 J. Allison; 2 J.S. Porter; 3 J. Allison. Tup Hog: 1 J.S. Porter; 2&3 J. Allison. Ewe: 1 J Allison; 2 G. Barningham; 3 J.S. Porter. Gimmer Hog: 1&2 G. Barningham; 3 J.S. Porter. Gimmer Shearling: 1 G. Barningham; 2 J.S. Porter; 3 J. Allison. Pair Tup Hogs: 1 J.S. Porter; 2 J. Allison. Tup Hogg/Gimmer Hogg: 1 J.S. Porter; J. Allison. Best Pair: 1 J.S. Porter; 2 J Allison; 3 G. Barningham. Best Coated: 1 J. Allison; 2 G. Barningham; 3 J.S. Porter. Consolation: 1 G. Barningham; 2 J. Allison. Champion Female: J Allison. Champion Male: J.S. Porter. The Silver Cup: J Allison. Special Champion: J.S. Porter. \* J. Allison & Sons.

It is always difficult to thank everybody for their efforts any year. So a great and sincere thank you to all - it was a memorable Sports Day due to your hard work and God for providing good weather.



## ARNGILL HARRY

On one of those rare, crystal clear, sunny days last week we went to Arngill for a picnic. While sitting in the sunshine near the old leadminer's hut, admiring the view, I tried to imagine what these hills and valleys looked like thousands of years ago.

What really set me off was thinking about the skeleton in our cupboard. Let me tell you about it.....

One day in the late 1950s my father visited his friend Nat Cherry in Ivelet. As usual there was a lot of talk about the 'old days.' Nat told my father something that really caught his interest. Apparently, as a boy of 9 or 10, at the beginning of the century, he and his father went out rabbiting along Ivelet side. When they reached the screes beyond Arngill their ferret disappeared. It obstinately refused to come out from the rubble of rocks at the foot of the cliff. The light was fading so impatiently Nat and his father started to shift the rocks and stones in an attempt to find the creature. As they dug down, to their shock, they suddenly found a pile of bones. This was no sheep; on closer examination they saw it was the skeleton of a human. Rather scared they quickly covered it up again, piling on the debris and leaving a small cairn of rocks to mark the spot. They did, however, have the presence of mind to remove one half jaw bone before hurrying home to report what they had seen.

They took the jaw bone to the local school teacher who rightly declared that this was a very ancient specimen and promptly despatched it to the British Museum to ask their opinion. This was before the days of 'carbon dating,' and the experts dated 'Old Harry,' as he came to be known in our family to some ridiculously prehistoric period.

"Have you ever been back?" my father asked Nat. His old friend admitted that they had always felt a bit spooky about it and had never returned in over 40 years. "Do you think you could find the place again?" Nat thought he could, especially if the cairn had survived.

So one summer evening Nat, my parents,

brother and sister could be seen wandering up 'Nut walk' and past Arngill. There was the spot, still marked by the cairn. In no time at all the party had shifted the rocks and exposed the crumbling skeleton. Old Harry was gathered into a paper bag and his jaw bone duly sent off to the British Museum for a second opinion. With it went a semi-fossilised, large tooth found amongst the bones.

This time a more accurate dating was given. This was a bronze Age man, and the tooth mysteriously came from some distant past, and was the tooth of the extinct oryx.

As I lay in the sunshine after our picnic I tried to imagine what 'Old Harry' had been doing. Had he fallen from the cliffs? Met a violent death? Had he been hunting? Did he live in one of the circular huts, the remains of which can still be found near Swinnergill? Had he buried in a proper grave? Were there more graves nearby? The hills of Swaledale are full of secret. Is there anything more exciting than finding some small clue, an arrowhead or an ancient stone enclosure or hut circle? A ring carved on a moorland rock? Even the name and date of some long gone leadminer chipped into a surface of stone near an old level?

We will never really know what mysteries are hidden in our landscape. We can only speculate and wonder.

*Jocelyn M Campbell*



## Eclipse August 1999

A much publicised total eclipse of the Sun will be seen in Cornwall on August 11<sup>th</sup>. If you are there on this date the Moon will pass between the Earth and the Sun and for the space of 1 or 2 minutes it will completely block off the sunlight giving the impression of twilight so that the Solar corona and even some Stars will be visible.

However, for those of us here in Yorkshire, it will still be worth watching the partial eclipse. Provided the cloud cover does not obscure the event, we can expect the Moon to cover just over 85% of the Solar surface so that the Sun will appear as a crescent Moon. The last total eclipse of the Sun in the UK was in June 1927. There is an old AA plaque marking the site of the total eclipse path to be seen on the outskirts of Richmond on the Reeth Rd. In 1927 I believe it was cloudy on that occasion but perhaps we will be more fortunate in August. The last partial eclipse seen here was in Sept 1996. This time as we will be closer to the total eclipse path, it should be rather more spectacular. If you want to see a total eclipse of the Sun and are not planning to be in Cornwall in August, you will have to wait till 2072!!

An eclipse occurs when the Earth, Sun and Moon are in line so that a total eclipse of the Sun occurs when the Moon passes between the Earth and the Sun. In so doing, it throws a shadow long enough to touch the Earth and cover an area of about 50 miles across. This shadow travels over the surface of the Earth at about 1000 miles an hour. Just outside this shadow of the total eclipse we see the Sun partially obscured by the Moon so that here in Yorkshire we will see the moon obscuring just over 85% of the solar disk-giving us a partial eclipse. At about 10am on the morning of Wednesday August 11<sup>th</sup> the Moon will begin to encroach on the solar disk. It will gradually obscure more and more of the disk until at about 11.20 am it reaches a maximum of 86% coverage and thereafter moves out of alignment so as to leave the solar disk at about 12.30. As the eclipse progresses, the sky will darken appreciably to give the impression of twilight at around 11.20.

**However, do not be tempted to look directly at the sun either with the naked eye or with sunglasses.** To do so is to invite severe eye damage or even blindness. After all you would never dream of looking directly at the sun under normal conditions and even the crescent sun during a partial eclipse is still just as bright. Special filter glasses or welders 14 glasses are necessary. The only safe way to observe this marvel of nature is to project the image of the sun onto a white card held back from the refocused eyepiece of mounted binoculars or a small telescope. By moving the eyepiece, an enlarged focussed image of the sun can be produced at a convenient distance back from the eyepiece where the eclipse may be observed in comfort.

Given a clear day, it is relatively easy to obtain a photographic record of the event. An old manual camera is required focused at infinity. Such a camera, mounted on a stout tripod should be pointed to the south east at about 50 degrees to the horizontal. By this means a series of photographs taken as the eclipse progresses should provide a fine record of the event from 10 to 12.30. If you do intend to photograph the event it is essential to practice beforehand. A good ploy is to try and photograph the full moon. This will check the focus and give you an idea of the size of the image you will obtain. It will also allow you to see if you can include any foreground to improve the artistic composition. and decide on the stop best suited to your film,

*Geoff Marr*

### Marjorie Hutchinson

Would like to thank friends and neighbours for their cards, gifts and good wishes received during her recent illness.

### MARRICK SHOW

31<sup>st</sup> July from 11am

Childrens Sports; Quoits; Fancy Dress; Craft Stalls; Cottage Teas; Home Produce; Open Gardens; Open Clay Pigeon Shoot; Painting; Home Produce; Flowers and Vegetables

  
**175 years**  
*of saving lives at sea*

## "WILL YOUR ANCHOR HOLD?"

The new recording of the fifteen lovely maritime hymns, never believed recorded together, let alone by one of the country's finest cathedral choirs was officially launched at a special Choral Evensong in Ely Cathedral in May. It made an immediate and dramatic impact by its remarkable quality of both singing and recording quality, and is undoubtedly destined to become a popular classic in the future judging by large sales already experienced. Produced specially for the Royal National Lifeboat Institute to help raise funds for the Lifeboat Service in this their 175<sup>th</sup> Anniversary year. The idea came from Rodney Hall of Reeth who carried out detailed research into the history of the hymns. This accomplished choir, under its Director of Music, Paul Trepte, has created an outstanding recording and added to its already established international reputation. Instrumentalists are Rodney and Rebecca Hall.

Musically, it is one of the greatest recordings of its type ever to be produced and appeals to a wide range of music lovers, whether those of the wonderful hymns or just the beautiful music in itself. Hymns featured include: "Will Your Anchor Hold?" "Eternal Father Strong to Save," "Nearer my God to Thee," "The Lifeboat," "The Golden Shore" and "God be with You."

The recording in both CD and cassette form is now available from Reeth Post Office; the RNLI Music Division (the RNLI West Country Group) Tel: 01752 822638; or Ely Cathedral Shop Tel: 01353 667023

### YORKSHIRE FORWARD "Taking the region forward"

Yorkshire Forward has taken over some of the roles of the former Rural Development Agency, ie: Redundant Building Grants.

For full details please contact them at:  
 Spitfire House, Aviator Court, Clifton Moor,  
 York, YO30 4GV Tel: 01904 693335

### Frogmore's Figure

Some weeks ago I was irritated by a bad telephone line. My friend Frogmore was telling me something about an encounter with figures when we were cut off and failed to reconnect to finish the conversation. I could not imagine old Frogmore being much concerned about figures feminine or, for that matter, masculine either. Nor could I believe that although then due, his tax return was agitating his mind.

When we met over the Bank Holiday he explained that his embarrassment had been about a figure of speech. On a local quiz show he, a retire schoolmaster, had been caught out by a literary question. He had told the audience that an oxymoron was some kind of a prehistoric monster!

Now that was silly, for surely we all know don't we, that an oxymoron is a figure of speech in which two apparently contradictory terms are combined, for example "cruel kindness" as in phrase, "sometimes one has to be cruel to be kind. (But then Frogmore did not have advantage of dictionary at the time.)

That anecdote set us talking about how we usually take figures of speech for granted, especially metaphors and similes. We speak about a clear head, a hard heart, virgin snow, a torrent of words and so on - all metaphors. A simile, you will recall from school days, is a metaphor which includes in the comparison the words "like" or "as." From Milton, Frogmore quoted the line about the fallen angels lying "thick as autumnal leaves that strew the brooks in Valambrossa," and from Homer writing of Ulysses, "His words fell soft, like snow upon the ground." and yet again how Tennyson compares a miller covered with flour dust to, "a working-bee in blossom-dust."

I was quite taken by Frogmore's erudition. To keep the conversation going. I asked him what was the most vivid simile that had come up in his own experience. He had been camping in France, he told me, in a steep sloping meadow. In his sleep he had slid down the slope so that by morning his legs were right out of the tent. The farmer's wife who witnessed the scene commented that he had slithered down the slope lie a ripe Camembert.

EGF

### LEADER II

Administrative arrangements have now been changed and the Leader II fells & Dales Programme is now being administered through the Yorkshire Rural Community Council. The local contact is their Development Officer, Stan Roccoft at Yorebridge House Bainbridge. Tel: 01869 650456.

The Dales Programme is currently fully committed but news is expected shortly on the establishment of a "pool" of funding from the national underspend. Local Leader Groups will be advised accordingly.

#### Yorkshire Dales Millennium Trust Dales Environment Project 2000

completed applications for funding for next year must be returned by 31<sup>st</sup> August. For full details and an application form please call at any National Park Centre or Tel: 0155242 51002

#### The Dales

At the start of the year their cloudy skies and the ground is green

When its spring the lambs are born.

They are brown at first after they turn a wonderful white colour.

When it comes to June or July the sun comes and the grass is dry.

When autumn comes the leaves fall off the trees and they turn brown yellow and red

When it comes to winter there is snow everywhere and you can go sledging down hills.

Hannah Thornborrow Age 9 of  
 Gomerside School

#### COMMENT by Peter Brant

There has been much comment and speculation in the local Press recently about certain difficulties within the Yorkshire Dales National Park Authority. Unfortunately it is human nature to remember only the bad things. The National Park, has over the years achieved much for the dales. Swaledale has particularly benefited from the barns and walls scheme to mention but one. Some of the problems are created by Government legislation. We have some very good local representatives on the Committee and I am sure they will continue to do their best to promote local views and concerns.

### NEW BOOK

#### Rural Responses to Industrialization

*The North Yorkshire Pennines 1790 - 1914*

(Wensleydale & Swaledale in the 19<sup>th</sup> Century)

by Dr Christine Halls of Askrigg (Head of the School of Humanities at Trinity and All Saints,

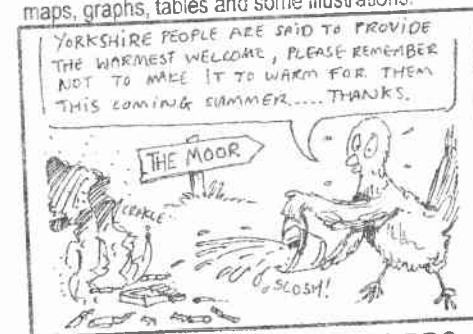
University of Leeds

Pub: Peter Lang - (hb price £32)

This fascinating book is the culmination of twenty years' research and brings fresh insight to the debate on the role of the countryside in the industrialization process. By providing and integrated study of Wensleydale and Swaledale the book examines:

- changes in population and occupations
- landownership and farmholding patterns noting changes in owner-occupancy, land values and rents,
- the changing emphasis of sheep and cattle including the growing importance of dairying
- the rise and fall of the lead, coal, quarrying and textile industries
- the impact of road and rail transport on the area
- the extent of migration and its effect on local communities.

The resultant book provides a lively and detailed account of the two dales in the nineteenth century and shows how two area in close proximity to each other, and which look very similar, can have such different experiences. The book does contain: maps, graphs, tables and some illustrations.



#### DIG Dales Centre Disco & BBQ

Cogden Hall Sat 31<sup>st</sup> July 8pm - 1am

Tickets: £10 Available from: L Allison, Lisa Astwood, Reeth PO, Ian Matthews, Pete Smith and Rev Tim Tunley

## BIRDS IN THE REETH DISTRICT - AN UPDATE

These days it seems that hardly a week goes by without some crisis in the natural world, be it badgers, salmon, hay meadows or whatever. The general decline in our song birds has been well documented by the media, although fortunately we are still able to hear the skylark's melodious ascent over the moors and the song thrush serenading us in all the gardens.

It is now two years since my review of the birds of the Reeth District was published by the Gazette - the proceeds of which go to support the Yorkshire Wildlife Trust, and has, so far, raised over £400. So it is time now for an update and to see how the fall in numbers of some birds nationally has affected our local patch.

Last year's national survey of the black grouse population for instance, revealed a total of only 6350 males representing a fall of 67% in ten years, so a recent sighting of one on Marrick Moor was unusual but welcome none the less. In recent years there has been a steady reduction in the numbers of heron, snipe and kestrel and the sightings of kingfisher have not been as frequent as they once were.

But it is the decline in the summer migrants that gives the most cause for concern. The numbers of wheatears, redstarts and ring ouzels are all lower than they were up to three years ago, and the yellow wagtail seems to have disappeared altogether from Reeth and the situation is now desperate. This is where we need the help of all walkers and watchers. Please report any sightings at all of this beautiful sign of summer, within the area shown on the map in the booklet, to me on 8844212, and the Trust would be very grateful.



Thankfully though, it is not all bad news. The little owl, dipper and green woodpecker continue to thrive and we still have a good size sand martin colony near the Swing Bridge, even if some years they may be late arriving. Among the new additions to the survey, a Lady Amherst's pheasant was present in Langthwaite last May, and a pure white carrion crow caused a lot of interest in August. A barn owl was seen one evening in December near Ellerton Priory and only in April of this year a osprey (illustrated) flew over Redmire quarry where it rested in a tree for 45 minutes.

These spectacular fish hawks can be easily overlooked as they make their way north to their breeding areas in Scotland. Ospreys migrate from their winter quarters in Africa, and regularly use the dales as their major flight paths, feeding on fish in any stretch of open water they can find en route. They migrate north in spring and south in autumn, so the best months to see them are April and September. The return of the osprey to Scotland has been a major conservation success story. After 40 years absence a pair returned in 1954 and formed a new expanding population, and today there are now 130 pairs breeding in Scotland.

*David Perray, Yorkshire Wildlife Trust.*

### YELLOW WAGTAILS - Concern over numbers

With increasing concern over the decrease in the national population of yellow wagtails the Yorkshire Dales National Park Authority is repeating a 1991 population survey.

The roadside and footpath based survey will be taking place over the coming weeks in Arkengarthdale and Littondale.

The yellow wagtail is a migratory bird, wintering in West Africa and returning to the UK in the summer to breed. It is found in a range of habitats, from grazed moorland to river flood plains, but is mainly

associated with the hay meadows in the Dales.

The survey will record the number of breeding pairs this year - enabling an assessment of any population change from 1991.

The results from the survey will help shape the Biodiversity Action Plan - currently being drafted for the Park Authority - which will direct the way flora and fauna of the Yorkshire Dales is cared for in the future.

People with confident sightings of the yellow wagtail are asked to contact Ian Court of the YDNPA on 01756 7522748.

**Children's Football Weekend** - Recently Arkengarthdale saw three super matches. On Sports Day the home team joined Gunnerside to field A & B teams against Reeth. The Home B team proved stronger than their rivals winning 5-0. This did not reflect on a hard fought game with the home team striving for every goal. Daniel Coates scored 4 goals and Peter the other. Men of the match were voted Robert Wilhelmy for Reeth and Martin Calvert for the Home team. The A team match was much closer with Reeth winning 4-2 which was a fair reflection on the exciting game. Stephen Allison, Martin Bainbridge, Tom Gill and Robert Wilhelmy scored for Reeth while Philp Wickham scored both Home goals. Men of the Match were Toby Fisher and Philp Wickham. Sunday saw Arkengarthdale joined by 3 from Swaledale to take on Hawes in a thrilling and high scoring game which Arkengarthdale won 14-7. Arkengarthdale stormed away but some splendid goals from Stephen Bell enabled the visitors to equalise at half-time only to see the home team pull away again in the second half. Scorers were Michael Harker, Philp Wickham (5), Chris Allison (2), Chris Porter, Matthew Wickham (3), James Birks and Jane Fawcett and for Hawes, Stephen Bell (4), Ben Coates, Liam Hatfield and Darren Bell. The children enjoyed it so much they had a second short game afterwards with all the children remaining on the field at the same time. Many thanks to Pete McKay for refereeing all three matches. *DN Williams*

### DIG - Treasure Hunt

**£100 First Prize**

**Pick up your entry forms at: Local Post  
Offices, Pubs and Stores**

*Further details from Stuart May Tel 884040*

### "Step by Step round Reeth"

is a new leaflet featuring a walk around the township of Reeth by June Hall of Bainbridge. It is the fourth in her series of "Step by Step" leaflets featuring local villages, the others are: Bainbridge, Muker and Gunnerside. Well researched and lavishly illustrated with some unusual black and white photographs the leaflet is a guide to the many features of Reeth, famous for its sloping Green and fascinating Swaledale Folk Museum. The area is popular with walkers who often park on the Green but overlook the delights of the capital of Swaledale. Readers of the leaflet will be enthused to explore the township. In the introduction the leaflet states, "An old guidebook states that tourists to the Dales required historical interest, natural beauty and good food. Reeth continues to provide these in abundance, for today's visitors." The leaflet, priced £1.50 is available from numerous outlets in Reeth, especially the Post Office, National Park Centre and Folk Museum and will soon be available from Richmond and Leyburn TICs.

### Low Row Millennium Celebrations

Low Row village continues to prepare for the Millennium Celebrations with a Strawberry Tea and Garden Party at The Old Mill, Low Row on Sunday afternoon, 25<sup>th</sup> July. (No need to wear your best hat to THIS one - no corgis either!) Enjoy the ambience of a Swaledale strawberry and cream tea whilst listening to incidental music provided by the Lundberg family. There may also be the chance of an odd game of croquet and various other amusements for children and adults of all ages. Do come along and join us, weather permitting! (Meet in Low Row Institute if wet.)

## Dales CC

Dales continued their good League Form by defeating Trimdon Colliery, Lands II and Middleton St George which took Dales to the top of the Darlington & District C Division by two points from Aldbrough St John.

### Dales v Trimdon Colliery

152 for 7 wks

Bowling:	O	M	R	W
A Lofthouse	8	1	35	0
D Wallis	14	0	47	2
D Hutchinson	9	1	38	1
J Simpson	23	0	18	2

### Dales Innings

D Wallis	bowled	Lowe	0
S Broadbent	lbw	Lowe	10
D Hutchinson	bowled	Graggs	0
J Simpson	bowled	Lowe	10
A Lofthouse	bowled	Lowe	74
K Hutchinson	bowled	Lowe	17
R Metcalfe	bowled	Lowe	18
A Hird	bowled	Lowe	0
P Terry	not out		1
I Merry	not out		3

### Extras

19

Total 8 wks 153

Dales won by 2 wks - match ball sponsor - Kings Arms

### Lands II v Dales

Lands Innings - 30 all out

Bowling:	O	M	R	W
D Wallis	7	3	12	5
A Lofthouse	7.3	4	17	3
D Hutchinson	1	0	1	1

### Dales Innings:

J Collins	ct Fielding	Saunders	6
S Broadbent	bowled	Fielding	0
D Hutchinson	bowled	Sturman	16
I Merry	not out		1
D Wallis	not out		6

### extras

2

Total 3 wks

31

Dales won by 7 wks - match ball sponsor - Kings Arms

### Dales v Middleton St George

### Dales Innings:

J Collins	ct Archer	Hussain	1
S Broadbent	bowled	Nablren	43
A Richardson	bowled	Binks	12
D Wallis	bowled	Hussain	53
N Winter	ct Hussain	Zaheen	3
A Lofthouse	bowled	Hussain	9
J Simpson	not out		3
D Hutchinson	not out		1

### extras

16

Total 6 wks

141

### Middleton Innings

94 for 6, won by 47 runs match ball sponsor King Arms

Bowling:	O	M	R	W
D Wallis	14	1	44	2
A Lofthouse	13	1	48	3
D Hutchinson	1	1	0	6

## Come and Visit



Lots to see & do, or

just visit our tea-room also  
Pony rides available at £1.00  
Open Sun - Thurs (5 days)  
June to September 2pm - 6pm  
July & August 11am - 6pm  
Tel: 01748 886224

## MUSICAL EXTRAVAGANZA

in aid of Marie Curie Cancer Care & Macmillan Cancer Relief

Richmond Castle 7pm Sat 17<sup>th</sup> July

Presented by: Stewart McFarlane of BBC Radio Cleveland and featuring: Janine Roebuck leading International Soprano; Army Normandy Band of the Queens Division; Richmond School Band, Reeth Brass Band; Invited soloists, Carol Andrew Singers, Scottish & Irish Piper on the Castle Keep

Tickets available from: Richmond Castle; Georgian Theatre Royal, Local TICs,

(Credit Card Booking Line Tel: 01904 621000)

## Swaledale Christian Council

Barbecue at Marrick Priory

Thursday 22<sup>nd</sup> July from 6.30pm

Fun and Games for all

Tickets: Individuals £2; Family £5 From:

Council members, Marrick Priory or Reeth Post Office.

Contributions of salads or sweets will be appreciated.

The evening will end with a short act of worship

# Books

New Titles now in stock include:

## RICHMONDSHIRE ARCHITECTURE

by Jane Hatcher

This comprehensive study of local architecture has recently been reprinted in paperback. (pb £25)

## SWALEDALE WILLS AND INVENTORIES

1522 - 1600

edited by Elizabeth Berry

The wills and inventories presented here afford a new look at the society and economy of Swaledale in a period crucial to the formation of modern society. (hb £48)

## THE STORY OF THE YORKSHIRE DALES

by W R Mitchell

The Dales, that delight so many visitors have long deserved a book like this. A very readable study of the making of the landscape by nature and man, covering the entire past of this part of the Pennines (hb £17.99)

## An Illustrated History of

## TRACTORS

by Jim Wilkie

comprehensive in its coverage and profusely illustrated the book will appeal to all those who are interested in rural history. (hb £18.99)

**PLUS the latest Best-Sellers and some new local Walks Books**

Now Available our  
FREE Summer Reading Catalogue

## Ordering Service Book Tokens

Sold & Exchanged

Reeth Post Office BookShop

Tel & Fax: 01748 884201

(Member Booksellers Association)

9am - 5.30pm Mon - Sat

**NOW ALSO OPEN**

10am - 5.30pm on Sundays

**It's Good to Read**

A Warm and friendly  
service awaits each of  
our clients at:

## "The TOP SHOP"

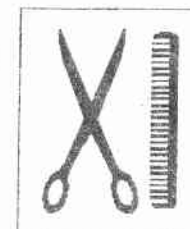
Reeth Hairdressing Salon

Arkengarthdale Road

(opposite Reeth Garage)

Tel: 884627

Offering a high  
standard of  
UNISEX  
hairdressing



LOW LIGHTS and HIGH LIGHTS with

"Easy Mesh" are our speciality -

including cut and style from £35

PERMS

including cut, set or blow-dry £35

followed by your first complimentary

shampoo and set or blow-dry

REWARD CARDS:

are available for regular clients,

enabling them to receive special

offers, discounts, etc.

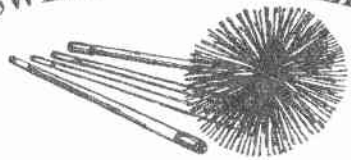
GIFT VOUCHERS

an excellent Gift at variable prices





## SWEEPIN' THE DALES



Take the worry and mess out of having your chimney swept Call **Martin Tradewell**, the local expert and take advantage of the following:-

City & Guilds (7641) certificate in Chimney Cleaning (the only one in the area) • Fully insured • Clean, safe & thorough • Minimum disruption to your daily routine • Certificate of Cleaning issued (highlighting any dangers, hazards or problems)

'Next Visit Due' reminder service

**Martin Tradewell**  
**NEW N° 01765 688299**

## QUIZ

E	L	E
L	S	A
W	A	D

See if you can make 70 or more, words of four letters using each letter only once. The letters also make a nine letter word, what is it? Small prize for the first longest and complete entry drawn.

Drop in your entry to the Post Office by **JULY 19th**

Light Housekeeping help required (mornings) at Chapel Farm House Whaw. Phone Joyce for details 884062

## The Chyll

### Bed & Breakfast

Arkle Town Arkengarthdale

Set in wonderful countryside, with spectacular views of Arkengarthdale

All bedrooms en-suite with colour TV.

For details contact Mrs. Sheila Good on 01748 884353 or Fax 01748 884015



## Tan Hill Inn

Keld • nr Richmond • North Yorkshire

Britains Highest Inn 1732 ft ASL

Reeth 11 miles • Langthwaite 8 miles

Open all day • B&B en suite

Licensed to get married on the premises

Food lunchtimes & evenings

Theakstons & Various guest ales

Alec & Margaret Baines 01833 628246

## LAIDMAN STONES

LIME & DRYSTONE WALLING  
BARN & HOUSE RESTORATION

Park Head Farm Arkengarthdale  
Richmond DL11 6RR  
Telephone 01748 884730

## Colin Brown

Vacuum Chimney Sweep

Over 15 year's experience

All areas covered

**01748 818497**

Grass & Hedge Cutting Undertaken



BMW : LAND ROVER : VOLVO : MAZDA : VAUXHALL

## DORANT LTD CAR AGENTS



### 4x4's

- 98S FREELANDER 1.8XEI 5-dr. FSH, Charleston Green 8000 miles..... £18,995
- 97R MITSUBISHI SHOGUN 2.8TD GLS 5-dr (new model). One owner, SH, Gray / Silver Met 13 000 miles..... £20,995
- 97R DISCOVERY 2.5 TDI '5' 5-dr. 1 Owner, FLRSH, Epsom Green, 17,000 miles..... £16,995
- 96P DISCOVERY TDI 5-dr. FLSH, sunroof, electric pack, Epsom Green, 25,000 miles..... £15,995
- 96P DAIHATSU 2.8 FOURTRAK TDI Estate. SH, Blue Metallic, 38,000 miles..... £10,995
- 96N RANGE ROVER 2.5 DT, S/roof, T/bar, Biarritz Blue, 44,000 miles..... £20,995
- 95N DAIHATSU FOURTRAK FIELDMAN TDS. Side windows, Green Met, 53,000 miles... + VAT £7995
- 95N LADA NIVA 1.7 COSSACK. White, 34,000 miles..... £3495
- 95M ISUZU TROOPER 3.2 LWB Auto CITATION. 7 seats; alloys, air con, FSH, Olive Green, 72,000 miles..... £12,495
- 95M RANGE ROVER 4.0 AUTO (New Model). Sunroof, alloys, etc., FSH, Epsom Green, 58,000 miles..... £17,495
- 92J DAIHATSU FOURTRAK TDX. 7 seats, side steps, s/roof, Light Blue Met..... £6995
- 91H DISCOVERY TDiS 5-dr. Alloys, 7 seats, sunroof, FSH, Terracotta Red Met..... £8,295
- 91H ISUZU TROOPER 2.8 TD 5-dr Duty. T+T, Red..... £6495
- 90G LANDROVER 110TD Hardtop. Green, PAS, one owner..... + VAT £4995
- 89G SUZUKI 1.6 J1X 3-door. Roof bars etc., Blue Metallic, 88,000 miles..... £3995
- 86C LAND ROVER 90 Diesel Hardtop. Green... £3495
- 85B LAND ROVER 90 Diesel County Station Wagon. 7 seats, Grey..... £4000

### 7-SEATS PLUS

- 94M RENAULT ESPACE 2.0RT. 7 seats, twin roofs, FSH, Blue, 41,000 miles..... £9495

### CARS

- 94M FORD MONDEO 1.8 TDLX 5-dr. Blue Metallic, 62,000 miles..... £4995
  - 92J VW PASSAT 1.8L 4-dr. White, 81,800 miles..... £2695
  - 89G TOYOTA MR2 GT. Leather trim, excellent original condition, FLSH, Red, 85,000 miles..... £5995
  - 89G NISSAN MICRA GS 3-dr. 2 owners, 79,000 miles..... £1495
  - 89F FORD GRANADA Ghia X 2.9 4x4. White..... £995
  - 88F GOLF GTi 3-dr. Alloys, sunroof, Black..... £2595
- This is just a selection of Vehicles available  
Please call with your requirements

### NEW & USED CARS SUPPLIED TO ORDER

NEWGATE GARAGE,  
BARNARD CASTLE

Tel: (01833) 630620

Mon-Fri 8 am-7 pm. Sat 8 am-5 pm  
Sunday by appointment

989913

VAUXHALL : TOYOTA : HONDA : ROVER : BMW



## Reeth Memorial Hall

After School (3.15 - 6pm)

Holiday care (9 - 6pm)

Open to all children aged 4 - 11

Lots of Activities

Arts & crafts  
Books

Homework & music  
Computer, TV & video  
Baking

Fun & Games

Competitions  
Trips out  
Sports & lots more...

Phone  
884163

## Special Offer



This voucher entitles the bearer to one free after school session for their child or children (worth £4.50)

For full details, special rates & statutory benefit claims call

Rebecca on 884163



**Hillcrest Crafts**  
Derek J Harker  
Wrought Ironsmith  
Individually handmade  
& finished wrought iron work  
tel: 01748 884566

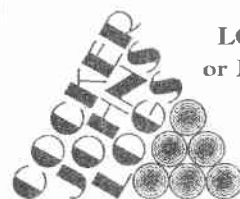


Interior, Hearth & Garden Furniture & Fixtures  
Gates, Railings, Spiral Stair Kits & Balustrades  
Security Grills & Pub Bar Fixtures  
Lighting, Music Stands, Weather Vanes...  
All products may be styled to your specifications  
making each piece an original  
Langthwaite Arkengarthdale Richmond DL11 6EH

**HILLARY HOUSE**  
Reeth  
Family run Bed & Breakfast  
1 Double - 1 Twin Room  
Tea & Coffee making facilities  
Colour TV  
**01748 884171**  
C Blodwell



**REETH MARKET**  
Support YOUR Local Market  
Every Friday 10 until 4  
Fruit & Veg • Butcher  
Jams & Preserves • Socks  
Paperware (Household) & Toiletries  
Crafts Stalls & Woodturning  
Plants • Books  
*A friendly market set against the  
beautiful backdrop of  
SWALEDALE*  
For details call Elaine Johnson on  
01748 884590



**LOGS - BAGGED  
or PICK-UP LOAD**  
Free delivery  
locally or collect  
by arrangement

**John Hird - 01748 884380**



**SWALEDALE  
WOOLLENS**

**OPEN  
ALL YEAR**

British made and high quality were our  
watchwords 25 years ago when Swaledale  
Woollens was founded and the same is true  
today - we still use the best of British wool  
and the best of British knitters.

*Why not take a look for yourself and  
visit our shop or our web site.*

You are also welcome to send for our colour brochure  
and use our efficient worldwide mail order service.  
Muker, Richmond, North Yorkshire DL11 6QG

Tel/Fax 01748 886251

*or visit our Web Site:*

*www.yorkshirenet.co.uk/swaledalewoollens*

*E-mail: woollens@swaledale.net*

#### HOLIDAY COTTAGES WANTED

For our very successful letting service  
based in Hawes. Let us market your  
holiday cottage alongside the 100 other  
properties we already have in Swaledale,  
Wensleydale and Dentedale. Most achieve  
30-40 weeks booked per year but we will  
happily register cottages that are limited  
by Council Tax rules to 20 weeks letting.  
We also offer a complete holiday cottage  
caretaking and management service.  
**Inspection visits are without charge or  
obligation. Call by or ring us or write to:**

**COUNTRY COTTAGE HOLIDAYS**  
Dryden House, Market Place, Hawes  
North Yorkshire DL8 3RA  
Telephone 01969 667654

## Dovetail

*Antiques & Ethnic Crafts  
from around the World*

**ANTIQUE PINE & OAK  
KITCHEN & GARDEN  
ARTIFACTS**

**Made to Measure  
Re-Claimed PINE  
& OAK Furniture**

Gallery & Original Gifts

**5% DISCOUNT  
with this ad**

Why Travel MILES  
were on your Doorstep

2 Bridge St, Bedale  
01677 426464

Free Swaledale Delivery



En-suite + Private Shower,  
Private Tea/Coffee facilities  
TV Lounge with open fire  
Easy access, ample parking  
Non Smoking Establishment  
Arkengarthdale Richmond North  
Yorkshire DL11 6EN  
Phone & Fax : Brenda Martin  
01748 884051



**IAN LAW**

Painter & Decorator  
EST. 1977

For ALL Interior & Exterior Work  
Walker House Marrick  
01748 884342

**G. E. Brown & Son**  
Building  
Contractors  
UPVC Doors  
Windows &  
Conservatories  
The Old Mill Low Row  
Richmond DL11 6NH  
Telephone  
01748 886356

**THE  
BURGOYNE  
HOTEL**

On The Green Reeth  
Richmond North Yorkshire  
DL11 6SN  
Telephone & Fax  
01748 884292

## DALESWAY DRIVING SCHOOL

**CHRISTINE WHITEHEAD**

DoT Approved Instructor

CATTERICK RICHMOND  
SWALEDALE WENSLEYDALE

**01969 623299**

2 Church View, Bellerby  
Leyburn DL8 5QG



## JAMES PEACOCK

FOR YOUR COAL &  
SMOKELESS FUELS

Approved coal & Fuel merchants

Speedy & reliable deliveries of  
solid fuels & oils throughout the  
Swale & Arkengarthdale area

Telephone

01969 650465

## Arkleside Hotel Reeth

*Dorothy & Richard*

*Welcome Non - Residents for  
Private Dinner Parties*

*Tel. 01748 884200*

## Tony Sunter

Dry Stone Walling  
Plastering &  
other building work

Telephone 01748 884624  
after 6pm

AROMATHERAPY  
REMEDIAL MASSAGE  
REIKI

Una Berry SP Cert A., MISPA  
Telephone 01748 884644



B E N C H M A R K  
Corporate Graphics & Graphic Design  
Telephone 01748 884513

## DEREK JOHNSON

Your Local Handyman  
Hill Side Arkengarthdale

Garden Services  
Grass Cutting  
Paving Fencing  
Painting &  
Light Home Maintenance  
**01748 884590**

## PAUL HODGSON

architectural services

plans, specifications, project management  
Planning & Building Regulations approvals  
modest fees - free initial consultation  
Dales specialist - 30 years experience

tel & fax: (01748) 886568

## LOW FAGGERGILL COTTAGE

Cosy holiday cottage on a Dales 'working'  
hill farm with breathtaking views  
of Arkengarthdale - Sleeps 2  
Ideal base for walking, biking and touring  
the Dales or simply enjoying a quiet holiday

Mrs. Gladys Atkinson

Low Faggergill Cottage Arkengarthdale  
Richmond North Yorkshire DL11 6RS  
01748 884550

*Douglas Mairs & Sons*  
Established  
**1935**  
COAL MERCHANTS  
WEST AUCKLAND  
**Regular Deliveries  
Throughout the  
Dales Area**  
We also supply large bags of DRY sticks  
**Competitive Prices**  
01388 833616 or 832884



**Aromatherapy  
Reflexology  
& Massages**

For information ring

**Olga Ashton** ITEC, IHHT, MICT  
Telephone **01748 826022**



*As featured on 'Dales Diary'*

*Come and see our famous range of  
Animal Figures and Wall Plaques.*

**Many NEW designs to choose!**

**FREE ENTRY TO WORKSHOP**

*Opening Times*

*Monday - Friday 9am - 4pm*

*(production & shop sales)*

*Saturday 11am - 4pm*

*Sundays & Bank Holidays*

*11am - 4pm*

*(shop sales only)*

*Orders by mail order are welcome*



**SUMMER OFFER**  
**10% OFF**

*All shop purchases from our  
range of stock items when you  
use this voucher.*

*Voucher valid between  
1 June & 31 July*

Reeth Dales Centre, Silver Street, Reeth  
Swaledale, North Yorkshire DL11 6SP  
Telephone 01748 884498 Fax 01748 884334  
e-mail: stefsmodeis@talk21.com

## WENSLEYDALE TREE & HORTICULTURAL SERVICES



All tree, forestry and horticultural work undertaken  
(INSURED)

David Allen (HND Arboriculture)

Foss Garth, Thwaite, Nr. Richmond

North Yorkshire DL11 6DR

01748 886071



## REETH GARAGE Ltd.

Arkengarthdale Road, Reeth, Richmond  
North Yorkshire DL11 6QT

We can offer a full range of services from our comprehensively equipped professionally staffed premises.

We cater for most makes & models, inc. Landrover & Subaru 4x4

**Authorised M.O.T. Test Station  
Body & Crash Repairs**

**QuickFit Exhausts,**

**Tyres & Batteries**

**at very competitive prices**

**Collection & Delivery Service**

or courtesy car when available

**contact: HARVEY ROBINSON**

**SALES • SERVICE • SPARES**

**A dealer you can depend on!**

**01748 884243**

**UNIPART**  **CAR CARE CENTRE**

ESTABLISHED OVER 60 YEARS

*Coast to Coast*  
**Door to Door Service**

'We'll carry your pack so you don't have to'

*For Further Details Contact*

01642 489173 or Mobile 0802 358457

or write to

8 Althorp, Redcar, Cleveland

TS10 1NY

*Baggage Services*

*South of Spain*

*ESTEPONA*

*Costa del Sol*

Holiday flat to rent with swimming pool, tennis court, close to beach & Marina

For details please telephone 884781

THE WHITE HOUSE  
Guest House



Overlooking Arkle Town and the Dale

Bed & Breakfast - En-suite rooms

Optional evening meal - No Smoking

Angela Whitworth

Arkle Town Arkengarthdale

DL11 6RB

01748 884203

DALES  MOUNTAIN BIKE  
HIRE

Quality Ex-Hire Mountain Bikes  
**FOR SALE**

Small & Medium Sizes  
will suit ages 10/11 and up

Nearly New & Used Bikes  
From £140

01748 826960



**The Kings Arms**

SWALEDALE'S INN ON THE GREEN

**REETH**

open all day every day

We offer an appetising Lunch & Evening Menu  
as well as Traditional Sunday Lunch.

Cask Conditioned & Guest Ales

Live Music Every Weekend

For details please telephone

01748 884259

Visiting or Walking in  
Arkengarthdale? Call in to

**Chapel Farm  
TEA ROOM**

Relax in 'the Zen-like calm' of  
Whaw, a tiny, remote hamlet 2 1/2  
miles beyond Langthwaite off the  
Tan Hill road.

Many of Joyce's home-made  
dishes are from Grandmother's  
cook book - wholesome soups,  
generous open sandwiches, melt-  
in-the-mouth scones and  
delicious cakes - and  
complemented by Yorkshire Tea  
or fine coffee.

AFTER OPEN ALL WEEK 10 -5pm

WEDNESDAY 1 - 5pm

**Joyce Best**

Chapel Farmhouse Whaw Arkengarthdale

Telephone 01748 884062

**C.J. BEESTON**  
**Chartered Accountant**

**Personal Taxation  
Accounts - Payroll - VAT**

**The Laurels, Reeth**

**Telephone & Fax**

**01748 884535**

**OPENING SOON**

**Private Day Care**

**for children 2 1/2 - 5 years**

**For a brochure please call**

**Gill Hayes**

**884542**

**Darlington & Stockton Times**

*'The Dalesman's Bible'*

Swaledale & Arkengarthdale's  
complete weekly newspaper.

All your local news and sports  
plus readers' letters,  
What's On, Countryman's Diary,  
Past Times,

Looking Back and much more.

**Make sure of your copy  
by placing a regular order  
with your newsagent**

**45p - every Friday**

Superb Holiday Cottage  
**ARKENGARTHDALE**

Quiet & Private location with  
excellent views

Sleeps 6 - Centrally Heated - Modernised &  
equipped to an extremely high standard

Available all year *PLUS*

Low season mini-breaks

Mrs. G. Stones 01748 884360

**FACED WITH ANOTHER  
POWER CUT ?**

**Don't despair, contact:**



*Diesel Generators*

*Wind & Solar Power*

*Inverters*

*Control Panels*

**Specialists in  
Alternative Energy Systems**

**For specialist advice phone:**

**01748 886005 / 886377**

**Pager: 04325186529**

## LEYBURN LAUNDRETTE

### & LINEN HIRE

01969 622685

Domestic / Commercial Laundry  
Self Service / Service Laundrette  
Collection & Delivery

### AQUATEX CLEANING

Kinder to Clothes  
Brightens colours - fresher smell  
Agency at: The Gift Shop - Reeth

## R & T DECORATORS

JASON ROBINSON

- TIME SERVED - FULLY QUALIFIED
- ALL WORK GUARANTEED
- COMPETITIVE PRICES

FOR A FREE ESTIMATE  
CALL 01969 624611



### In Richmondshire

Caring for the sick, elderly or disabled person can be a full time job. SHARE CARE is a network of local people who provide relief care to enable those caring for a relative or friend at home to have a few hours break when required.

If you wish to use the service or can help in any way to provide it.....

Contact Barbara Paterson  
01677 450037

The CB Inn - require a  
Part-time kitchen assistant  
Hours to suit

No experience necessary, but an interest  
in **REAL** food an advantage  
Call Charles or Sharon on  
01748 884567

## THE C.B. INN



### ARKENGARHTDALE

- Nine individually decorated En-Suite Bedrooms with superb views
- Our outstanding food is fresh, purchased locally and prepared & cooked on the premises to a very high standard. The menu is written up daily on an imposing mirror which hangs at the end of the bar
- Purpose built children's play area overlooked by the Garden Bar (also available for small private functions)

*A warm and friendly  
atmosphere, fine fresh food in  
a traditional Inn environment.*

- Booking advisable •

Fully inclusive breaks available  
throughout the year.  
Bookings, details or a brochure call  
01748 884567

Open all day Every day

## THE ALTERNATIVE



Friday July 30th  
No experts Prizes for best & worst  
Also Beer Card Draw Night!

## MARKET PLACE

- Required - person to help prepare and serve Bar Food 11.30am to 2pm weekdays, good rate of pay. Apply: Red Lion, Langthwaite. Tel: 884218
  - Person Required, part time, to cook bar meals, will also consider someone willing to learn, hours to include some weekend work. The Farmers Arms, Muker Tel: 886207
  - Registered Child Minder in Swaledale has vacancy. Tel: 825746
  - Licensed Trade - flexible, self motivated mature Mbii, NLC, Food Hygiene Cert, HNC, for holiday, weekend, holding relief, call John on 884934 anytime
  - Vehicle Storage available Tel: 884611
  - 3 Piece Suite, soft brown leather with solid oak frame £450 Tel: 886493
  - Mobile Caravan wanted to hire for one week in July, 4 berth plus. Tel: 884266
  - Womersley Famous Fruit & Herb Condiments - an extensive selection of gourmet condiments used by discerning cooks and chefs. The range includes herbs and fruit flavoured jellies and condiments, preserves, chutneys and other exclusive delicacies - contact John on 884934, anytime.
  - Do you need a cleaner? General house keeping, holiday cottages, etc. Own transport, reasonable rates. Tel: Mandy on 884901
  - Traditional Signwriter & Signmaker: Rodney Teasdale - Tel: 886357
  - Cakes - made to order Tel: Gladys Atkinson 884550
  - Manure Spreading - very experienced contractor required to spread manure on 4 acres of undulating land in Low Row, when/if weather permits, Tel: 886291
  - Typing & Word-processing Service - any work undertaken, reasonable rates, letters, reports, memoirs, theses, etc. Tel: 884089
  - Wiltshire Farm Foods - the home meals service - for details and a free brochure call 01642 643999 - delivery day Wed.
  - Ram, Cow and Goat Horns wanted, good prices paid. Tel: 886383
  - I have a large collection of minerals on display, for sale and mail order. Contact M. Johnson Tel: 886376
  - Carpet Upholstery Cleaner for Hire Tel: 884760
  - Violin and Viola Lessons - experience teacher just moved into area Tel: 884041
- Antiques Restoration French Polishing, Wax & Oil Finishes, Traditional Upholstery - Collection & Delivery. Tel.: 01677 424793
- Swaledale Caterers (Alison and Lisa)  
for any special occasion we can provide fresh, tasty food at competitive prices  
Tel: 886335 or 886434
- Cakes for Occasions decorated to your design or ours, wedding cakes our speciality.  
Phone 886239 or 886355 (evenings)
- Learn to Play the Flute - Tel Libby Gillon on 886276
- WORD PROCESSING Don't need a full-time secretary but would like someone to handle your paperwork. Letters, reports, mail-shots, etc. If I can read your handwriting I'll type it for you. Rates negotiable Call Sue on 884244 / 884817 (ans phone)
- Learn to Play the Double Bass with Dominic Rivron Mus B (Hons) Double Bass, 'Cello, Bass and Folk Guitar tuition Music Theory (reading music, song-writing, Grade V, etc) Tel: 01969 624292
  - Piano Tuning and repairs - John Hardcastle, Leyburn Tel: 01969 624965
  - Any wrought iron work, interior or exterior, estimated price is guaranteed price. Tel: Stephen Calvert on 886577
  - Mushroom Compost for Sale - 50p per bag - deliveries possible. Contact Hazel Oliver 01969 663179
  - Settle-Carlisle Guided Walk Leaflets now available from local TICs
  - Jack-of-all-Trades Handyman - available for jobs around the home - Phone Martin on 01969 650785
  - Self Catering Hostel Accommodation the Keld Centre Tel: 886559

## MARKET PLACE

- **Bakkus & Benofit** complete dog food for all types of dog, from £8.50 per 20kg bag, FREE delivery in the Dales. Phone Rod on 884286
- **Photocopying - Duplicating - and Laminating** available from the *Reeth & District Gazette* at Reeth Post Office
- **Alexander Technique** for underlying postural back, neck and joint problems. Gail Barlow AIL, DipM STAT Cert Nut for private appointments/courses Tel: 850553

**LEONARD SCRAFTON** Carpenter / Joiner (City & Guilds) General Maintenance Tel: 824106

**Home Sewing Service** Curtains, Cushions, Loose Covers, Bedheads, Blinds, Bedspreads, Upholstery Reasonable Rates, Professional Standard, Free Estimates *Christine Long* Tel: 825773 c/o *Janet Sunter* Tel: 884624


- **Do you need your holiday cottage** spring cleaned? Decorated? For the new season. Then we are the women to do it. Honest, reliable, local women, reasonable rates. Please ring 01969 667173 or 017683 72011 after 6pm

**Comb & Cutter Sharpening / Bakkus & Benofit Dog Food** Delivered to your door  
P D Marsh (Rod) 884286 (mobile: 0401 000597)

- **Sheepskin Rugs** for sale - good selection of brown and white spotted Jacob rugs. Tel: 884572
- **BRIDGE GARAGE**, Reeth has selection of quality used cars. Call 884245 for details
- **Citroen ZX Advantage**, diesel, 1994, d/blue, fsh, 69000 miles, full MOT, vgc £3200 Tel: 884912
- **H Reg Peugeot 205 XLD** 3 door hatch, diesel, T&T, poa 884243

**FREE TICKETS** Chetham School of Music, Manchester at the Royal Northern College of Music Wed 7<sup>th</sup> July - Lower School En of Year Concert (8 - 13yrs) Orchestra, Big Band, Choir plus the Manchester Cathedral Choristers (who regularly sing on Channel 4, solos 1. Vivaldi's Spring Concerto, 2. 1<sup>st</sup> movement Hayden's Piano Concert. Contact Sian Gasson on 0161 8387215

**TOP SHOP** Lynn Wilson owner of the TOP SHOP Hairdressing Salon, Reeth is delighted to welcome, guest hairdresser Emma Bushby, who was runner up for Northern Hairdresser of the Year, 1977. Her work is featured in current hairdressing magazines and she has appeared on BBC TV. Emma will be visiting the Salon on Sat 10<sup>th</sup> and Sun 11<sup>th</sup> July from 9am - 5.30pm. For appointment/further details Tel: 884627



### Logs

All hardwood ready to burn  
Stocks constantly available  
Large transit pickup loads  
delivered anywhere

Tel: - 01274 566997 Mobile: - 0850 431518

Ask For Tony

**DIARY DATE - Sat 24<sup>th</sup> July 10am - 4pm**  
"Hay Time Ten O'Clocks & Teas at Lane House, Arkengarthdale Road for Methodist Church Funds



### Swaledale

The bubbling River Swale elegantly rolls past  
You hear the farmer shouting at his dog to 'come by.'  
The tranquil hills sit deep in thought as the day goes by,  
The crumbling stone walls march solemnly up the huge hills in perfect order

*Sam Newborn Age 11  
of Gunnerside School*

## DIARY DATES - all entries are FREE - call 884201

### JULY

- 2<sup>nd</sup> - 11<sup>th</sup> Middleham Festival
- 3<sup>rd</sup> Barbecue & Rounders Evening, Gunnerside Friday Club Tel: 886343/886335 for details.
- 4<sup>th</sup> Muker Silver Band Concert Gunnerside Square 3pm
- 4<sup>th</sup> YDNP Guided Walk - Flowers in Arkengarthdale with Tony Wood, meet Red Lion Inn, Langthwaite 2pm
- 5<sup>th</sup> Reeth Millennium Celebrations Meeting and Memorial Hall Man. Committee 7.30pm Memorial Hall
- 5<sup>th</sup> Illustrated Talk Fremington Sunday School 8pm - Colin Straker "Birds of the Dales"
- 6<sup>th</sup> Bingo at the Buck
- 11<sup>th</sup> Salvation Army Open Air Service on Reeth Green 2.30pm
- 11<sup>th</sup> 1999 Mini Reeth Hills Race, start Reeth Green 11am
- 11<sup>th</sup> Charity Football Match - Reeth Junior Giants v Black Bull Codgers, Gunnerside School 2pm in aid of Martin House Hospice.
- 12<sup>th</sup> Community Health Council Public Meeting at 2.15pm Colburn Village Hall
- 12<sup>th</sup> Illustrated Talk Fremington Sunday School 8pm - John Atkinson "A Northern Dales Miscellany"
- 12<sup>th</sup> YCLA, Richmondshire Branch, AGM 7.30pm Reeth Memorial Hall
- 13<sup>th</sup> YDNP Planning Comm Reeth Memorial Hall
- 13<sup>th</sup> Swaledale Walking Guides - The Lead Mines of Swaledale Walk, meet Reeth NPC 10.30am. Tel: 825041
- 13 - 15<sup>th</sup> Great Yorkshire Show
- 14<sup>th</sup> YDNP Guided Walk - The History of Old Gang Mills & Lead Mines with Lawrence Barker, meet Surrender Bridge 2pm
- 14<sup>th</sup> YDNP Guided Walk - Around Calver, meet Reeth NPC 11am
- 14<sup>th</sup> NECPWA Vintage Vehicle Run to Tan Hill Tel: 818703
- 16<sup>th</sup> Gunnerside WI - Mark Baily "The Otter Trust"
- 17<sup>th</sup> Musical Extravaganza, Richmond Castle 7pm in aid of Macmillan Cancer Relief - join Reeth Brass Band and many others for a unique musical event. Tickets from local TICs
- 17<sup>th</sup> Marske Methodist Church Summer Event
- 18<sup>th</sup> Guided Walk with Roger Pettican - Leadmining near Keld - meet Keld Public Hall 2pm
- 19<sup>th</sup> Illustrated Talk Fremington Sunday School 8pm - Major FTC Williams "Footpaths in the

### Riverside Woodlands"

- 19<sup>th</sup> Deadline for articles for August Issue
- 21<sup>st</sup> Pantry Shelf Reeth Methodist Schoolroom 2pm
- 22<sup>nd</sup> YDNP Guided Walk - Looking at Leadmining in Langthwaite with Frank Burns - meet Red Lion Inn at 2pm
- 22<sup>nd</sup> Barbecue Marrick Priory from 6.30pm organised by Swaledale Christian Council
- 24<sup>th</sup> Open Day - Fremington Sunday School - Border Collie Rescue Society 10am - 4pm. Problem dogs assessed by appointment Tel: 850025
- 24<sup>th</sup> Reeth Methodist Church Fun Day at Lane House Reeth
- 25<sup>th</sup> James Herroitt Half Marathon. Tel: 01969 623144
- 26<sup>th</sup> Illustrated Talk Fremington Sunday School 8pm - Mark Whyman "The Secret of Life - the Northern Spas"
- 26<sup>th</sup> - 30<sup>th</sup> Into Space - Holiday Bible Club at Reeth Congregational Church, details tel: 884759
- 26<sup>th</sup> Reeth PC Meeting, 7pm Memorial Hall
- 28<sup>th</sup> Pantry Shelf Reeth Methodist Schoolroom 2 - 4pm
- 31<sup>st</sup> Barn Dance at Cogden Hall for "DIG"
- 31<sup>st</sup> Marrick Show commencing 11am - Programmes from Reeth PO

### AUGUST

- 1<sup>st</sup> Reeth Brass Band Concert, Reeth Green 3pm
- 2<sup>nd</sup> Illustrated Talk Fremington Sunday School 8pm - Ken Biggs "Where the Curlew Call."
- 2<sup>nd</sup> - 6<sup>th</sup> Football Coaching Gunnerside School Tel: 886434 for details
- 2<sup>nd</sup> Netball Coaching Gunnerside School Tel: 886434 for details
- 3<sup>rd</sup> Bingo at the Buck
- 4<sup>th</sup> Guided Walk with Lawrence Barker - Old Gangs and Mills - meet Surrender Bridge 2pm
- 4<sup>th</sup> Netball Coaching at Gunnerside School Tel: 886434 for details
- 4<sup>th</sup> Pantry Shelf Reeth Methodist Schoolroom 2pm
- 6<sup>th</sup> Songs of Praise with local Bands Reeth Methodist Church 7.30pm
- 7<sup>th</sup> & 8<sup>th</sup> River Clear Up with Family Fun Days - full details
- 9<sup>th</sup> Illustrated Talk Fremington Sunday School 8pm - Peter Gibson OBE "A Millennium Celebration of 1000 years in Stained Glass."
- 9<sup>th</sup> Closing date for entries to Reeth Show
- 11<sup>th</sup> Pantry Shelf Reeth Methodist Schoolroom 2pm
- 16<sup>th</sup> Illustrated Talk Fremington Sunday School 8pm - Marjorie Daniels "Swaledale Tales"



## DIARY DATES - all entries are FREE - call 884201

- 17<sup>th</sup> Bingo at the Buck  
 18<sup>th</sup> Guided Walk with Lawrence Barker - The Grinton Mines & Mills - meet Grinton YHA 2pm  
 18<sup>th</sup> Pantry Shelf Reeth Methodist Schoolroom 2pm  
 21<sup>st</sup> Open Day - Fremington Sunday School - Border Collie Rescue Society 10am - 4pm. Problem dogs assessed by appointment Tel: 850025  
 21<sup>st</sup> Closing Date for entries to Muker Show  
 22<sup>nd</sup> Swaledale Darts League AGM 8pm Buck Hotel, Reeth  
 23<sup>rd</sup> Illustrated Talk Fremington Sunday School 8pm - Major FTC Williams "Splendid Churches of The Dales"  
 23<sup>rd</sup> Reeth PC Meeting 7pm Memorial Hall  
 25<sup>th</sup> REETH SHOW - for details Tel: 884247  
 27<sup>th</sup> Swaledale Walking Guides - Gunnerside Gill Walk, meet Punch Bowl, Low Row 11am.  
 28<sup>th</sup> Wensleydale Show  
 29<sup>th</sup> Guided Walk with Paul Denning - Reeth Summer Circuit - meet Burgoyne Hotel, Reeth 10.30am  
 29<sup>th</sup> Muker Silver Band Concert, Muker Square 3pm  
 30<sup>th</sup> Reeth Sports  
 30<sup>th</sup> Arkengarthdale Methodist Church Car Boot Sale and Afternoon Teas  
 30<sup>th</sup> Illustrated Talk Fremington Sunday School 8pm - Dave Weedon "The Yorkshire Dales in 3D"  
 31<sup>st</sup> Bingo at the Buck

### SEPTEMBER

- 1<sup>st</sup> MUKER SHOW - for details Tel: 886330  
 3<sup>rd</sup> Barbecue & Live Music, CB Inn in aid of Friends of Arkengarthdale School  
 5<sup>th</sup> Guided Walk with Roger Pettican - Shaw Beck and Prys Level - meet Marske Bridge 2pm  
 6<sup>th</sup> Dales Ladies outing to James Herriott Centre, Thirsk details Tel: 884113  
 6<sup>th</sup> Illustrated Talk Fremington Sunday School 8pm - last for the 1999 season - Lawrence Barker "A Brief History of Swaledale and Arkengarthdale."  
 7<sup>th</sup> Arkengarthdale PC Meeting  
 14<sup>th</sup> Bingo at the Buck - start of Autumn season.  
 19<sup>th</sup> Reeth School Open Afternoon  
 25<sup>th</sup> Open Day - Fremington Sunday School - Border Collie Rescue Society 10am - 4pm. Problem dogs assessed by appointment Tel: 850025

### OCTOBER

- 16<sup>th</sup> "Meantime" a new North Country Theatre presentation, Reeth Memorial Hall  
 23<sup>rd</sup> Gala Concert by Muker Silver Band and the Swale Singers in aid of Keld Public Hall

- 23<sup>rd</sup> Open Day - Fremington Sunday School - Border Collie Rescue Society 10am - 4pm. Problem dogs assessed by appointment Tel: 850025

### NOVEMBER

- 13<sup>th</sup> Open Day - Fremington Sunday School - Border Collie Rescue Society 10am - 4pm. Problem dogs assessed by appointment Tel: 850025

### APRIL 2000

- 8<sup>th</sup> "Messiah" a special performance for the Millennium in Reeth Methodist Church by the combined choirs of Upper Swaledale and Upper Wensleydale

### JULY 2000

- 1<sup>st</sup> Muker Millennium Party - Show Field

### 1999 Mobile Library Visits

#### Route 3

(Downholme, Grinton, Marrick, Marske)

WEDS: 7<sup>th</sup> & 28<sup>th</sup> July, 18<sup>th</sup> Aug

#### Route 7

(Fremington, Reeth, Langthwaite, Whaw) TUES: 13<sup>th</sup> July, 3<sup>rd</sup> & 24<sup>th</sup> Aug

#### Route 9

(Healaugh, Gunnerside, Low Row, Harkerside)

THURS: 15<sup>th</sup> July, 5<sup>th</sup> & 26<sup>th</sup> Aug

#### Route 13

(Westonesdale, Keld, Thwaite, Muker)

WEDS: 15<sup>th</sup> July, 11<sup>th</sup> Aug

This information was correct at the time of printing.  
 The staff on the Mobile Library will be happy to help with any queries or Tel: 01609 776192

### RICHMONDSHIRE MOBILE VOLUNTEER BUREAU

follows the Library Van and routes and visits Reeth every third Friday, (2<sup>nd</sup> & 23<sup>rd</sup> July) for full details Tel: 822335

### Royal Mail 1999 Millennium Stamp Collection

- |                      |                  |
|----------------------|------------------|
| 6 <sup>th</sup> July | Citizen's Tale   |
| 3 <sup>rd</sup> Aug  | Scientists' Tale |
| 7 <sup>th</sup> Sept | Farmers' Tale    |
| 5 <sup>th</sup> Oct  | Soldiers' Tale   |
| 2 <sup>nd</sup> Nov  | Christians' Tale |
| 7 <sup>th</sup> Dec  | Artists' Tale    |

Stamps and Presentation packs available from your local Post Office please ask for details

DEADLINE DATE - Aug Issue  
 Mon July 19<sup>th</sup>

## CHURCH SERVICES

in ARKENGARTHDALE and SWALEDALE

### 4th July

- 9.15am St Mary's Muker Eucharist  
 10.30am Low Row URC  
 Reeth Methodist  
 Sunday School Anniversary  
 11.00am Holy Trinity Low Row  
 Eucharist Rite A  
 Reeth Congregational  
 St Edmund's Marske  
 Family Eucharist  
 2.30pm Gunnerside Methodist  
 Family Service  
 6.00pm St Andrew's Grinton  
 Evening Prayer  
 6.30pm Gunnerside Methodist  
 Midsummer Festival  
 Reeth Congregational



### 11th July

- 9.00am Keld URC  
 9.30am St Andrew's Grinton  
 Eucharist Rite A  
 St Michael's Downholme  
 Holy Eucharist Rite B  
 10.30am Low Row URC  
 Reeth Methodist  
 11.00am Reeth Congregational  
 St Edmund's Marske  
 Morning Prayer  
 11.15am St Mary's Arkengarthdale  
 Holy Communion BCP  
 2.30pm Low Row Methodist  
 4.00pm St Mary's Muker  
 Communion & Sunday School  
 6.30pm Arkengarthdale Methodist  
 Gunnerside Methodist  
 Marske Methodist  
 Communion  
 Muker Methodist  
 Reeth Congregational  
 Reeth Methodist

### 18th July

- 9.00am Keld URC  
 9.15am St Mary's Muker Eucharist  
 10.30am Low Row URC Communion  
 Reeth Methodist  
 11.00am Holy Trinity Low Row  
 Eucharist Rite A  
 Reeth Congregational  
 St Edmund's Marske  
 Holy Eucharist  
 2.30pm Arkengarthdale Methodist  
 Low Row Methodist  
 6.30pm St Mary's Arkengarthdale  
 Evensong BCP  
 Gunnerside Methodist  
 Marske Methodist  
 Holy Communion  
 Muker Methodist  
 Reeth Congregational  
 Reeth Methodist

### 25th July

- 9.00am Keld URC  
 8.00am Holy Trinity Low Row  
 Holy Communion BCP  
 9.30am St Andrew's Grinton  
 Eucharist Rite A  
 St Michael's Downholme  
 Holy Eucharist Rite B  
 10.30am Low Row URC  
 Reeth Methodist  
 11.00am Reeth Congregational  
 St Edmund's Marske  
 Holy Eucharist  
 11.15am St Mary's Arkengarthdale  
 Holy Communion BCP  
 2.30pm Low Row Methodist  
 6.30pm Arkengarthdale Methodist  
 Gunnerside Methodist  
 Marske Methodist  
 Muker Methodist Communion  
 Reeth Congregational  
 Reeth Methodist

# Swaledale - Bus Times - Arkengarthdale

Richmond - **SWALEDALE** - (Hawes TUES only) - (Leyburn FRI only) Routes: **30, 30A, 36, 130, 522**

(W/E 12.4.99)	522	30	30	522	30	30	36	30	30A	30	30A	30
	SD		M-Th	SD		Fr	Fr	Sa	Sa	Sa	Sa	Sa
Richmond Schools				1545								
<b>RICHMOND</b> Mkt. Pl.	0715	0910	1310	1550	1740	2240		0735	1000	1135	1400	1535
Whitcliffe Place	0718	0913	1313	1553	1743	2243		0738	1003	1138	1403	1538
Marske (via Marrick & Hurst)											1413	
<b>LEYBURN</b> Mkt. Pl.							1309					
Bellerby Cross Keys							1314					
Downholme							1324					
Grinton	0737	0932	1332	1616	1802	2302	1332	0757	1022	1157		1557
<b>REETH</b>	0744	0934	1334	1619	1804	2304	1334	0759	1024	1159	1446	1559
Arkle Town									1030		1452	
Langthwaite									1031		1453	
Whaw Road Ends									1035		1457	
Healaugh	0748	0938	1338	1623	1807	2307	1338	0802		1202		1602
Low Row	0756	0945	1345	1631	1815	2315	1345	0810		1210		1610
<b>GUNNERSIDE</b> Bdge	0800	0955	1355	1635	1825	2325	1355	0820		1220		1620
Muker Farmer's Arms		1006	1406				1406	0831		1231		1631
Thwaite		1010	1410				1410	0835		1235		1635
<b>KELD</b> Tan Hill Rd. End		1019	1419				1419	0844		1244		1644
Keld Tan Hill R/E		1007	1423									
Thwaite		1015	1428									
<b>HAWES</b> Mkt. Pl.		1033	1446									
<b>HAWES</b> Mkt. Pl.		0940	1400									
Thwaite		1010	1418									
Keld Tan Hill R/E		1007	1423									
<b>KELD</b> Tan Hill Rd End		1025	1425				1025	0850		1250		1650
Thwaite		1034	1434				1034	0859		1259		1659
Muker Farmer's Arms		1038	1438				1038	0903		1303		1703
<b>GUNNERSIDE</b> Bdge	0800	1049	1449	1640	1825		1049	0914		1314		1714
Low Row	0804	1059	1459	1644	1835		1059	0924		1324		1724
Healaugh	0812	1107	1507	1651	1843		1107	0932		1332		1732
Whaw Road Ends									1035		1500	
Langthwaite									1039		1504	
Arkle Town									1040		1505	
<b>REETH</b>	0816	1110	1510	1655	1846		1110	0935	1046	1335	1511	1735
Grinton	0818	1112	1512	1658	1848		1112	0937		1337	1513	1737
Downholme							1122					
Bellerby Cross Keys							1130					
<b>LEYBURN</b> Mkt. Pl.							1135					
Marske (via Hurst & Marrick)									1119			
Whitcliffe Place	0842	1131	1531	1717	1907			0956	1129	1356	1522	1756
<b>RICHMOND</b> Mkt. Pl.	0845	1134	1534	1720	1910			0959	1132	1359	1525	1759
Richmond Schools	0850											

\*SD - School days; M-Th - Mon to Thurs; Tu - Tuesdays only; Fr - Fridays only; Sa - Saturdays only; No Service Sundays or Bank Holidays  
(\*NB - a Service for route 522 (Arriva route 30) does operate in School Holidays at the same times)

All services are supported by North Yorkshire County Council. Service 522 is operated by Abbotts of Leeming.  
Services 30, 30A & 36 are operated by ARRIVA (ARRIVA Travel Enquiry Line Tel: 0345 124125)

## ARKENGARTHDALE

Malcolm Terry operates a request service to link will ALL Swaledale Services -  
Please Tel: 01748 884533 daily to confirm your requirements.