

Arkengarthdale RED LION INN

Free House — Real Ales
Bar Meals & Snacks all year round
Tel. 01748 884218 12/00

STEPHEN STUBBS ELECTRICAL CONTRACTOR

Rewires, Extractors
Security Lighting / Alarms
Showers, Storage Heaters
House Inspections etc....

Tel: 01748 884686
Fax: 01748 884139
FREE ESTIMATES



Approved

R/C



CLOCK WORKS

Clocks & Barometers
Repaired, Cleaned,
Serviced & Restored

Ian Whitworth

Dales Centre
Reeth, Swaledale

North Yorkshire. DL11 6SP

Tel: 01748 884088 20/00

Member of the British Watch & Clock Makers Guild

TREVOR J. HIRD

ELECTRICAL CONTRACTOR

No job too small - - **FREE** estimates
Reduced rates for Senior citizens
Telephone 01748 886886 R/C

NORMAN F. BROWN

Chartered Surveyors & Estate Agents

LEADS THE WAY FORWARD IN ESTATE AGENCY

Free market Appraisal without obligation - Free listing on Internet
www.normanfbrown.co.uk

Call now for a professional Service - Bedale & Richmond Offices now
on Internet for property details with photograph and layout plans

Richmond Office : 01748 822473 / 822967

Bedale Office : 01677 422282

Leyburn Office : 01969 622194 11/00

REETH POST OFFICE & SHOP

Booksellers - Stationers - Greeting Cards
Photocopying - Faxing - Word-processing
Open all day Monday - Saturday 9am to 5.30pm

Tel. & Fax. 01748 884201

"More than just a Post Office" R/C

THERE IS ONLY ONE WHITE HOUSE

ANVIL SQUARE, REETH

TEL : 01748 884763 12/00

J. E. HIRD

Mobile Butcher

Prime quality fresh & cooked
meat. Groceries. Weekly local
visits & Reeth Friday Market

Tel: 017683 71709 R/C

M. GUY - PLUMBING

For all your
plumbing requirements
AGA'S & RAYBURN'S
SERVICED

Tel: 01748 - 825640 R/C

DAVID E. LLOYD - Chartered Builders

The Gables - Healaugh - Richmond

Tel. 01748 - 884315 R/C

NEIL YOULL — JOINER

FOR ALL YOUR JOINERY REQUIREMENTS

Tel. 01748 - 884569 R/C

Brian Sedgwick Plumbing Engineer

30 Years domestic
& industrial experience

Plumbing Repairs & Maintenance
Planning & Installation of Plumbing Systems

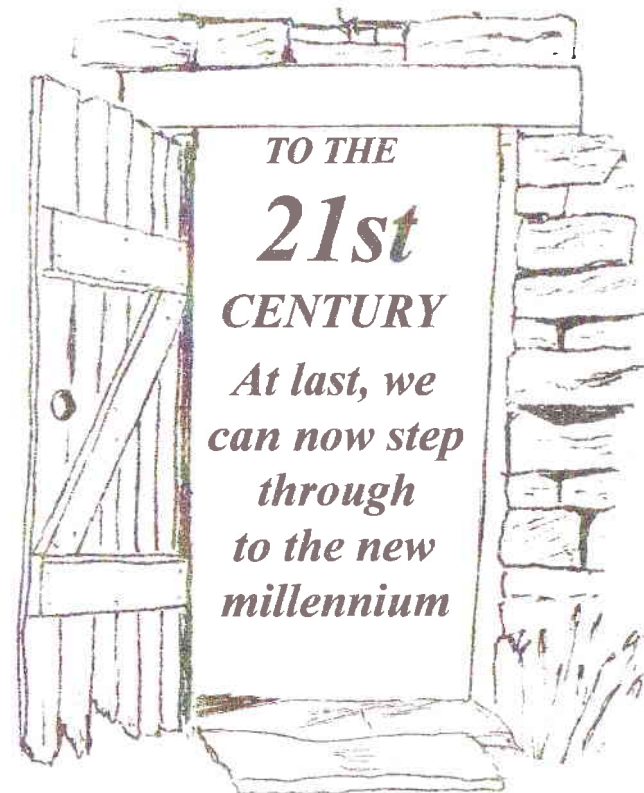
Harker View, Reeth
01748 - 884784 12/00

REETH & DISTRICT GAZETTE

Issue No. 66

Published 1st January 2001

JANUARY 2001



**BEST WISHES
&**

A HAPPY NEW YEAR

The Local News Magazine for Swaledale & Arkengarthdale

FREE COPY - PLEASE TAKE ONE HOME

CHURCH SERVICES

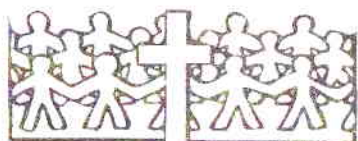
7th January

- 9.15 am St Mary's Muker
Eucharist
- 10.30am Gunnerside Methodist
Low Row URC
Reeth Methodist *Covenant*
- 11.00am Holy Trinity Low Row
Eucharist
Reeth Congregational
St Edmund's Marske
Family Eucharist
- 2.00pm Keld Methodist
- 2.30pm Arkengarthdale Methodist
Covenant Service
Muker Methodist
- 4.00pm St Andrew's Grinton
Evening Prayer
- 6.30pm Reeth Congregational

14th January

- 9.30am St Andrew's Grinton
Eucharist
St Michael's Downholme
Holy Eucharist Rite B
- 10.30am Low Row URC
Reeth Methodist
- 11.00am Reeth Congregational
St Edmund's Marske
Morning Prayer
- 11.15am St Mary's Arkengarthdale
Holy Communion BCP
- 2.00pm Keld URC
- 2.30pm Gunnerside Methodist
Covenant Service
- 4.00pm St Mary's Muker
with Sunday School
- 6.30pm Marske Methodist *Covenant*
Reeth Congregational

WEEK OF PRAYER FOR CHRISTIAN UNITY
HOLY TRINITY PARISH CHURCH
LOW ROW



United Service

JANUARY 21st at 10.30 am

EVERYONE WELCOME

21st January (other services)

- 9.15am St Mary's Muker
Holy Communion
- 11.00am Reeth Congregational
St Edmund's Marske
Holy Eucharist
- 6.30pm Reeth Congregational

28th January

- 8.00am Holy Trinity Low Row
Holy Communion BCP
- 9.30am St Andrew's Grinton *Eucharist*
- 9.30am St Michael's Downholme
Holy Eucharist Rite B
- 10.30am Reeth Methodist
Low Row URC
- 11.00am Reeth Congregational
St Edmund's Marske *Eucharist*
- 11.15am St Mary's Arkengarthdale
Holy Communion BCP
- 2.00pm Keld URC
- 2.30pm Arkengarthdale Methodist
Gunnerside Methodist
Muker Methodist *Covenant*
- 4.00pm Marrick Priory
Compline
- 6.30pm St Andrew's Grinton
Evening Prayer
Reeth Congregational
Marske Methodist

REETH & DISTRICT GAZETTE

EDITORIAL

Well all the Christmas festivities are nearly over. the Carol Services, Parties, Dinners, shopping, present and card giving and receiving, all now a memory. Locally we have had some super Carol Services, Concerts, and parties, and have celebrated Christmas in the usually great local traditional (see the article Christmas memories) style. But why? Why do we bother? We also in the course of our celebrations have to suffer - heartache, stress, upset, illness, bad tempers, over spending and sometimes general 'bloody-mindedness'. So why do we put up with it? I heard a reading recently that seemed to try and explain this.

We want to celebrate, we want to give, we want to enjoy, because Christmas has become over the centuries - over the last two thousand years - the reminder of the 'light' - the epitome of hope and love that mankind needs.

All this is because some two thousand years ago in a small remote village a baby boy was born. Shortly after his parents had to flee their home and take him into the desert for safety. He grew up in another remote village, where he spent most of his short life as a simple carpenter.

At the age of thirty he became an itinerant preacher and became very well known. But he did not have all the trappings of greatness, he did not go to

college or university and get a degree, he did not have his own vehicle of transport, he did not have an office, he did not travel around the world (in fact he never went more than 200 miles from his own home), he did not own houses or jewellery or any possessions other than the clothes on his back.

After three years as a preacher, as happens, the tide of public opinion changed. He was arrested and tried in a mock trial, his friends betrayed, denied and left him. He was condemned to death, and even had to carry his own instrument of execution - the cross. Whilst he was dying, all he had - his clothes - were gambled for by soldiers. After death he was placed in a borrowed grave.

Yet all the princes, kings, queens, rulers, parliaments that have ever sat, armed forces that have ever been gathered, have not individually or together had as much effect on mankind as this one man.

That is why Christmas is celebrated, the world over. That is why people put up with so much, just to be a part of that celebration, and in the hope that all the love, happiness and peace of this very festive time is kept on throughout the following year.

We hope that your 2001 is graced with some of that love and peace. From us all at the Gazette, a very Happy New Year.

Ed. GML

**PLEASE NOTE
DEADLINE FOR ALL ARTICLES
for the FEBRUARY ISSUE is
NOON FRIDAY 19th JANUARY**

CHRISTMAS PARTIES

Both events, the Play Group and the Parish party went with a fling and a swing. Games, Food, Singing and a visit from that special seasonal visitor Father Christmas loaded with individual gifts, left all who attended a smile and lasting memories to take home.

MUKER BAND

A busy programme of playing over the festive period, has, I am sure, left a number of band members with sore or blistered lips if not bad heads. Playing celebratory Carols, outside and often in,

folks homes, up and down the dale is a tradition we in the dales would surely miss should it cease. Visitors find it most appealing and especially enjoy joining in the Carol Singing when the Band finish off in the Farmers Arms after touring the village on Christmas Eve. The Band are to be congratulated for bringing the Spirit and Joyful Message of the birth of the Lord Jesus to as many folk as possible. On Wednesday 27th December, St Mary's Church, Muker had a tightly packed congregation to sing with the Band at the annual Carol Service. Rev Tim Tunley led the service of Nine readings and Carols.

Several readings were made by children of the Sunday School,

Jo and Josh Sammells and Gail and Avril Hunter. How nice it was to see so many young mothers and fathers attending this service with their young babies. I am sure that it is because the children are made welcome at all services, irrespective of the occasional noisy moment, that makes St Mary's, Muker church such

a warm and friendly a place making the family feel at ease. Long may it continue.

HEAVENLY BODY

Talking of things Heavenly. Sitting quietly in a darkened conservatory one evening, resting after a hard day with

six grandchildren, not to mention their parents, I noticed what initially I presumed to be an aeroplane with flashing Red and Green lights in the Eastern sky. Coming out of my reverie I realised that this 'plane' had failed to make progress and was still in the same position. Taking up binoculars for a closer examination verified that Yes! There certainly were Red and Green flashing lights coming apparently from the mystery object. Now I know that a well documented star was reported to have appeared in the East many years ago, but search as I may, the records do not mention once, that the star had flashing lights. To assure myself that I was not under the weather, all the family saw the ?? Anyone with an good explanation.?

MUKER PARISH**Diary Snippets**

"...with red and green flashing lights low down in the eastern sky... PMB"

OBITUARY**Death of a true Updaler & Famous "Keld Singer"****LAURENCE "LAURIE" RUKIN**

One of the most respected men of the Upper Dale, a founding committee member and one of the 'first judges' at the first Tan Hill Sheep Show, a 'character' and known far and wide as one of the famous 'Keld Singers', Laurence "Laurie" Rukin aged 87, was laid to rest with his late wife Marjorie, in Keld Churchyard following his funeral service at 12.30 pm on Christmas Eve, December 24th.

Laurie died on Tuesday 19th December and his funeral was held at Keld United Reform Church. The service was taken by the Rev. Gillian Bobbett and the Church was overflowing with mourners, who despite the very poor weather, had travelled far to pay their respects.

Laurie was born at "Harkers House", Keld on 7th March 1913 into a long standing upper dales farming family. Park Lodge, Keld was the family home where Laurie and his only sister, Mrs. Jennie Rutter of Fremington, grew up, went to Keld School (till 14) and Sunday school at the then Congregational Church. Park Lodge had been farmed by his family since 1901, firstly by his Grandfather, Bob Jim Jack Rukin and then by his father, John Rukin.

Laurie met and married his loving late wife Marjorie (nee Beswick) of Gyll Head, Satronsides, Gunnerside in 1945 and continued to live and work Park Lodge Farm. Laurie was a staunch supporter of the Keld Literary Institute and a keen billiard and badminton player. He also was a staunch member and cornet player in the then Keld Brass Band and Muker band but his main love was singing and playing the piano. He did love to sing...

Laurie and his wife bred sheep and cattle at Park Lodge and showed both at Muker and other shows throughout the area. Laurie was a Society member of the Northern Dairy Shorthorn Society, a member and supporter of Swaledale Sheep Breeders since its inception, a stalwart supporter and committee member of Muker Show and a founder member and committee member of Tan Hill Show. He was also a travelled and well respected Swaledale sheep judge. But really he loved to sing. Laurie suffered a very bad tractor accident in 1965 and broke his pelvis and legs. He spent 16 weeks in hospital and his injuries restricted his farming activity.

Cont... /6

Laurence Laurie Rukin :-

Laurie was troubled all his life from arthritis and had to have hip replacement operations in the 1960's..

But he loved to sing ... and of all the organisations and society's he supported and encouraged, one of the things he was most involved with and famous for was as a member of the well known "**Keld Singers**". This group comprised three brothers, Chris, Dick and Jim 'Mosser' Alderson and Laurie who was a nephew. The Alderson's were a very musical family and Laurie was the group organiser and pianist. Much of the singing was unaccompanied and they particularly favoured "Sankey" music. They started in the Congregational chapel Keld and sang in chapels and public halls across the North of England from the early 1940's. The group achieved fame by featuring on Radio and Broadcast often, once with the "Wilfred Pickles" show. In winter months, when not so busy farming, they were very much in demand and entertained at weddings, Show do's etc. and brought pleasure with their harmony singing and enjoyment to many, many folk. The singing of "Swaledale" after Muker Show, when well 'watered', was a memorable experience unlikely ever to hear the like again. They did love to sing.

Laurie was known to enjoy a lively debate with fellow farmers, and many a happy night was spent in the "Farmers Arms" singing and 'strongly' debating about sheep and farming.

Laurie "retired" with his wife to "Kisdon View", Keld, in September 1979. At that time his son John Robert Rukin, took on Park Lodge farm following the family tradition and his marriage to Barbara. Laurie then "advised" him on farming procedure and continued to do so until his death.

Laurence 'Laurie' Rukin is survived by his son John, daughter in law Barbara and grandchildren Mark & Christopher Rukin. His daughter Dorothy now Mrs Routh, son in law Tony, and grandchildren, Lindsey (now Mrs. McIntyre), and Glenda, and great grandchild, Toni McIntyre. His sister Mrs Jennie Rutter and her husband Robert and children.

He lived and loved to Sing..



**LAURENCE
"LAURIE"
RUKIN**

1913 - 2000

News from ARKENGARHTHDALE SCHOOL

We began our school term with three new members of staff. Mrs Hutchinson was appointed to take the KS2 class. Miss Beverley Rutter was appointed as NTA to work with the foundations stage and Mr Dawson was appointed to teach ICT for one afternoon. In the New Year he will teach a whole day. It is a pleasure to have them all on our staff.

In the summer holidays our toilet block was completely re-furbished and a staircase was put in to give an upstairs storage area. This is a great improvement. The new toilets were officially opened on Friday 3rd. November when we were able to say a very heartfelt thank you to all who contributed towards them.

Several exciting events have taken place this term. The children attended a Victorian washing day in Pickering and a Crucial Crew morning at RAF Leeming. They have written their own articles and comments about these events.

OUR VICTORIAN WASH DAY

We went to Ryedale Folk Museum for a day out. We rubbed, scrubbed, washed, rinsed, mangled, pegged out and even ironed, all done with Victorian equipment. What a wet but good day we had. Thank goodness for automatic washers!!

(Amy Stubbs)

CRUCIAL CREW

We went to Crucial crew RAF Leeming on the 28th September. Four of us went and we learnt about safety. It was a really exciting busy morning.

(Siobhan Smith)

OTHER COMMENTS

We sang songs at the Harvest Festival at St Mary's Church and we had a fun packed 'Maths Day' on December 5th. When £43.18 was raised for the NSPCC.

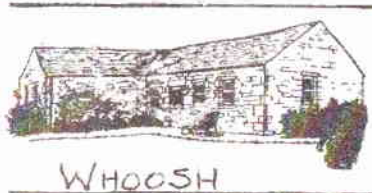
Our day started with a maths sing song and a story. Some of us followed a maths trail around school hunting out numbers and some of us did a maths quiz. The Juniors made some games to play with the Key Stage 1 children. Then we tried to get across the length of the school with 2p pieces. We crossed school and returned half way! We made biscuits and iced our number on. We ended the afternoon with maths art. A good day was had by all.

(Joshua Woodward)

The children also held a table top sale to raise money for Children in Need. They sold their old toys and baking. Joshua Woodward, Edward Birks and Siobhan Smith raised money by doing a sponsored silence. Altogether £129.70 was raised. At the time of writing, we are rehearsing for our annual Christmas production - 'A Star of Wonder'. This should be an enjoyable experience for parents as well as the children. The staff, governors and children wish you all a very happy New Year.

Pat Bumby, Headteacher

Readers, this News was received by Mike 'B' via e:mail - did the children send their comments as part of their Computer skills training ??



It's a Doc's Life

A column without a medical slant
(this month)

There are many current visions of the apocalyptic death of the world. They range from global warming due to build up of CO² in the atmosphere, to the obliteration of life from either super-volcanoes or asteroid impact filling the atmosphere with dust. But my favourite has to be the '*supernova in our backyard*' phenomenon.

A supernova comes from a star collapsing under its own gravitational weight. The star then explodes with unimaginable ferocity and sheds its outermost layers into interstellar space at speeds approaching the speed of light. Supernovae regularly explode across the sky in other galaxies and in our own but we are thankfully separated from them by large distances. However suppose one were to go off in our '*backyard*'?

The shell of ejected gas and radiation from the supernova could extend for 1,000 light years into interstellar space and consume everything in its path. The question we must ask is "are we within 1,000 light years of a potential supernova?"

The most likely candidate for a supernova is Sirius, the Dog Star, which is a double star. One of the pair, Sirius A, is a normal star but the other, Sirius B, is a white dwarf — a star that is near the end of its life, has run out of nuclear fuel and collapsed under its own gravity. Its size has diminished to an object about the size of the Earth. The gravitational pull of the white dwarf is sucking matter off its companion star and dumping it on itself. As the mass of the white dwarf grows it will reach a critical mass, at which point it will become a supernova. When it explodes the expanding shell of gas that results will have a temperature of 1 million degrees. This, and the accompanying X-radiation, when it reaches our solar system will strip away Earth's atmosphere (and the atmosphere of every other planet) and bathe the whole solar system in radiation. It will certainly be the end of life as we know it..

Sirius is only 9 light years away and it would take 9 years for light to reach us. If Sirius exploded today, we would not know it until 9 years later.

Fortunately supernovae are rare and we do have reasons to be grateful for them. Without supernovae, the carbon and other elements that are essential for life would not be formed and we would not be here to worry about them.

You can see Sirius as a very bright star low in the southern skies in the early evening in spring. If you find it brightens suddenly and unexpectedly, then I strongly suggest that you double your life assurance.

Dr. Paul Bond, The Surgery.

ARE YOU JUST GETTING BY WHEN YOU COULD BE GETTING MORE ??

If you are over 60 years of age
you should by now have received
your WINTER FUEL PAYMENT

This years payment is
£ 200
per household.

Where there is more than one
person entitled in the household it
is split between you but still
amounts to £200.

If you have any questions about
your WINTER FUEL PAYMENT

Call the HELPLINE on
08459 151515

Between 8.30am - 4.30pm
Mon - Fri . Local tel. rates apply

THE CORNER SHOP

FOR ALL YOUR GROCERY
REQUIREMENTS
ORDERS TAKEN FOR MEAT
FRUIT & VEGETABLES

Monday to Saturday 9 am - 5.30 pm
Sundays 9 am - 1 pm

JANUARY RECIPE SAUSAGE CASSEROLE

1 lb of Sausage - quartered
4 ozs rice 1 oxo cube
1 onion chopped 1 tin tomatoes
1 tin kidney beans (drained)
1 half pint of water - pinch chilly powder

Method :- Place all the ingredients in an
ovenproof casserole dish and cook for 40
minutes at 180 deg. (Gas 6)

All the ingredients are of course
available at :

**THE
CORNER SHOP
REETH**

R/C



The Buck Hotel,
Reeth, Swaledale. DL11 6SW
Tel.: 01748 884210

The Buck Hotel

BIG SCREEN ENTERTAINMENT
With Sky Sports

R/C

THOMLINSON TRUST

Applications are now invited for the
Thomlinson Trust from
Individuals & Groups in the
Gunnarside Area.

Please write enclosing a S.A.E.
for an application form

To the Secretary:-

Mrs A. Spensley,
Spring End House,
LOW ROW,

Richmond, North Yorkshire.
DL11 6NL

Completed application forms to be
returned by
31st. January 2001

GRINTON PARISH HALL**WHIST DRIVE**

**WEDNESDAY
17th JANUARY**

START AT 7.30pm

**ALL DEADLINES FOR THE
FEBRUARY ISSUE
NOON FRIDAY 19th JANUARY**

**WENSLEYDALE TREE & HORTICULTURAL SERVICES**

All tree, forestry and horticultural work undertaken
(INSURED)

DAVID ALLEN, (HND Arboriculture)

"West Park", West End, GAYLE,
Hawes, North Yorkshire. DL8 3RT

Tel. 01969 667364 or e-mail : david@allen3069.freemove.co.uk

R/c

**REFUSE COLLECTION
NEW YEAR**

Normal day	Revised day
January	

Monday 1st Jan	- Wednesday 3rd
Tuesday 2nd	- Thursday 4th
Wednesday 3rd	- Friday 5th
Thursday 4th	- Saturday 6th
Friday 5th	- Monday 8th
Monday 8th	- Tuesday 9th
Tuesday 9th	- Wednesday 10th
Wednesday 10th	- Thursday 11th
Thursday 11th	- Friday 12th
Friday 12th	- Saturday 13th

**HARKERS COACHES
of REETH**

*planning a trip out ?
then call Malcolm Terry
on 884533
your local Coach, Minibus &
Taxi Hire
Seating for parties of 8 to 45*



Olga Ashton



Complementary Therapist

ITEC, IHHT, IHBC, Dip.AOSM, MIGHT

Aromatherapy Massage, Acupressure Massage

Hydrotherm Massage, Reflexology

01748 826022



Come and see 'STEF's MODELS'

As featured on 'Dales Diary'

**FREE ENTRY TO OUR
WORKSHOP**

Located in the village of Reeth, you
are very welcome to come and visit
Stef's. Stef's Models is a 'green
tourism' attraction employing local
people in a small ecologically based
workshop unit. We design and
produce a wonderful selection of
reasonably priced countryside theme
wall plaques and animal models
including a good variety of the local
breeds of Swaledale & Wensleydale
Sheep and Border Collie dogs.
An ideal gift or fitting souvenir of
your visit to the dales.

OPENING TIMES

Monday - Friday 9 am - 4 pm

(Watch the production and see
the finished models)

Saturdays: 10 am - 4 pm

Sundays & Bank Holidays : 11 am - 4 pm
(Shop sales only)

A mail order service is also available and
information on your nearest 'Stef's'
retailer can be provided on request.

**REETH DALES CENTRE,
SILVER STREET, REETH.**

Tel. 01748 884498 - Fax. 01748 884334

e: mail - stefsmodeis@talk21.com

MEET THE BISHOP

**The Bishop
of Ripon & Leeds**

**Bishop John Packer
is to visit Swaledale on
Wednesday**

10th January

**During his visit to the
Parish, the Bishop**

**will Celebrate Eucharist at
St Andrews, Grinton, at 10am**

Later at The Buck Hotel, Reeth
the Bishop looks forward to
meeting with members of the
Farming Community between
11 am & 12.30 pm
and in the afternoon

between 2 pm & 3.30 pm
the Bishop hopes to meet with
members of the Business
Community.

All are welcome to come along.

At 7.30 pm there will be a
"Grand Re-Opening"
by Bishop Packer of
the refurbished Fremington
Sunday School Hall.

On Saturday 13th January between
10 am & 12.30 pm the Hall will be
open for coffee and a mince pie so
people can view our smart new Hall.

CHRISTMAS MEMORIES - As told by Mrs Martha 'Mattie' Moralee

It always seemed to be a white Christmas back in the early 1900's.

I don't suppose there really was always snow, but that's the way memory paints it. Sometimes the snow was so deep, we had to walk along the tops of walls to get from Castle Farm to the White gate. We pulled woollen socks over our clogs to prevent us from slipping. Christmas was a very special time for everyone. On Christmas Eve, mother set off to Reeth with what little money she had managed to save, to buy presents. We knew she would try to find a little bit of something for each of us, but it wouldn't be much. Nobody could afford lots of presents in those days. We didn't dare peep into mothers' shopping basket when she came home, that would have spoiled the surprise.

In Reeth on Christmas Eve the Brass Band played carols on the green, then they all went into the Temperance Hotel, where the Blenkins, Edie, Maggie and their brother Horn, treated them to basins of hot frummary.

At bedtime my brothers and sisters and I hung up a stocking each on the ends of our beds, then tried hard to go to sleep. The next morning the excitement was enormous as we emptied our stockings. One year I remember getting a rag doll. It was wonderful; far more than I'd ever expected. Albert, my brother, usually got a book, which always pleased him. We all had an orange, a few nuts and a stick of toffee. We were so thrilled and happy. We only received such exciting things at Christmas, that's what made it so special.

A Christmas service was usually held at the Congregational Chapel on the Sunday before Christmas Day.

On the day itself, we went to the Sunday School Tea. It was held in the schoolroom behind the chapel and was always well attended. After the Chapel members and scholars had enjoyed their 'feast', the tables were re-laid and in came the old people from the Work House next door. The ladies all wore their uniforms of black dress and black straw bonnet and the men had black suits. I felt it a shame that they had no bright coloured clothes to wear for such a happy occasion. We waited on the tables and generally helped out as the Work House people enjoyed their Christmas meal. Then everyone went into the Chapel for a Concert.

Reeth Village Store

Formerly the Bottom Shop

**LOOK - WE NOW SELL
DAILY NEWSPAPERS &
ALCOHOLIC DRINKS**

**LOCALLY BAKED BREAD & BUNS
Cakes & Pastries - Soft Drinks
Sweets & Chocolates - Ice Cream
Dairy Produce - Tobacco Products
Fresh Fruit & Vegetables
& Household Goods
FREE LOCAL DELIVERIES**

PHONE YOUR ORDER TO 01748 884552

OPENING HOURS

Monday - Friday. 7am - 7.30pm

Saturday. 7am - 7pm

Sunday. 8am - 4pm

**Guy & Suzann are pleased to see
Old & New Customers
Service with a "SMILE"**

12/00

Have you noticed the improvement since we bought the new printer?

Christmas Memories :- Continued...

The orchestra took its place in the Amen Corner at the front. There was Jimmy Postgate and Jim Kendall playing fiddles, Mrs. Doris Scratchard at the organ, Mr. Scratchard, George Barker and a few others made up the group of musicians.

The Chapel was packed and the concert always went with a swing. Those taking part marched in procession, in from the schoolroom, down the side aisle, through the passage by the front door, then back down the other aisle and up onto the platform at the front. We each carried a Union Jack flag on our shoulder. The concert was mostly singing and reciting poems. I usually sang a duet with my sister Mary. One year an item which raised a laugh, though it wasn't supposed to, was when Gladys Atkinson recited a poem about a shipwreck. She spoke in a totally unnatural posh voice and waved her arms in broad gestures. It really was funny. On Boxing Day, just about everyone in the village went to the Chapel for a Social. There were games and dances and there was food galore. How we loved the singing games such as 'The Jolly Miller', 'Nuts 'n May' and 'The Muffin man'. The schoolroom fairly shook with the pounding of feet as we danced round and round and up and down. No one ever felt left out; there was opportunity for everyone to join in. By the time the Social ended, the only hard part was finding the energy to walk home to Castle. With so much going on at Christmas, the Carol Singers didn't do their rounds until after Boxing Day.

Mr. And Mrs. Spence, Mrs. Binks, Tom Milner and we 'Hammond' girls were usually the leading lights of the group. We used to meet at the Chapel.

The men-folk took it in turns to carry the candle lantern on a long pole.

Our first outing was to go round Reeth, then over the bridge to Fremington Mill and Fremington. On the second outing, we visited the outlying farms.

Up Arkengarthdale Road to Watson House, then down the path to Rucroft. Next we crossed the fields and the beck to Heggs, then back across more fields to the three Castle houses - first the Alderson's at front castle, then our house, back Castle, then down to Johnson's.

One year our hosts had been extra generous when we called. At each house we were plied with cake and strong ginger wine for the lads and the men.

By the time we reached Castle, several of the young men were putting more than the usual enthusiasm into "God Rest Ye Merry Gentlemen" they were really in high spirits. We sober ladies set off for Johnson's. We soon realised that most of the young men were not in the group anymore.

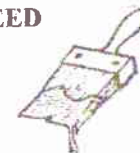
continued page top 28 /

R & T DECORATORS

JASON ROBINSON

- TIME SERVED - FULLY QUALIFIED
- ALL WORK GUARANTEED
- COMPETITIVE PRICES

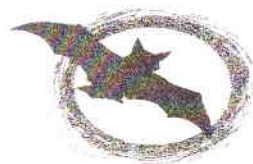
**FOR A FREE ESTIMATE
CALL :- 01969 624611**



Thank you for supporting your local Community Magazine

SCARED! - A Poem by Jessica Beckwith

Being scared is horrible, especially when your alone,
 You creep about the house not knowing what to do,
 Thinking of when your Mum gets back and what she'll say to you.
 What was that you just heard,
 The wind the rain... NO!
 It's a ghost in your house,
 or maybe an evil spy,
 Watching you, your every move,
 following you like a fly,
 Buzzing around your head



Then it's time for bed,
 The darkness of your room,
 The silence of your house,
 Then.... BOOO !!
 The spy finally gets you!
 Struggling to get away,
 He vanishes into thin air,
 And then you wake up to a frightening glare
 It's your MUM,
 "Wake up for school!" she shouts in your ear,
 After all that, it was a dream,
 I can't believe it, I'm going to scream!!.

**The Kings Arms**

SWALEDALE'S INN ON THE GREEN

REETH

Open all day every day
 We offer an appetising Lunch & Evening Menu
 as well as Traditional Sunday Lunch.
 Cask Conditioned & Guest Ales
 Live Music every Weekend, for details please
 TEL.: 01748 - 884259

R/C

**COMPUTER PROBLEMS OR
REPAIRS REQUIRED? (PC only)**

Contact

Jeremy Hutchinson

TEL: - 01748 - 886644

e:mail - jeremy@ydwco.co.uk

Basic setup & operation
 service/ training available

**FREMINGTON
SUNDAY SCHOOL****? HAPPY BAGS ?****APPEAL**

Please help our appeal
 by taking a *Happy Bag*
 home with you.
 You and your family are
 asked to Drop a coin in the bag
 whenever something

GOOD

GOOD

GOOD

GOOD

happens to you.

Bags available from ;

Sylvia Barnett 884754

SWEEPIN' THE DALES

Take the worry and mess out of
 having your chimney swept
 Call **Martin Tradewell**, the local
 expert and take advantage of the
 following:-

City & Guilds (7641) certificate in
 Chimney Cleaning (the only one in the
 area) • Fully insured • Clean, safe &
 thorough • Minimum disruption to
 your daily routine • Certificate of
 Cleaning issued (Highlighting any
 dangers, hazards or problems)
 'Next Visit Due' reminder service

Martin Tradewell

Telephone 01765 688299

Natural Spiritual Healing
and
Counselling

Natural Spiritual Healing can help
 many physical, mental, emotional and
 spiritual problems.

Animal Healing is also available
 this makes a wonderful complement to
 standard veterinary care.

For more information and appointments
 please telephone

Maureen Clayton, a Chartered

Psychologist,

with Diplomas in Counselling and

Natural Spiritual Healing,

on 01748 886188

**ROBERT STONES
BOBCAT & MINI
EXCAVATOR HIRE**WITH OR WITHOUT
OPERATOR**ALSO: 4 WD TRACTOR &
10 TON TRAILER**

Pepper Hall Arkengarthdale

Richmond North Yorkshire DL11 6EH

01748 884360 or 884718

Mobile 0421 605700

Reeth & District Gazette

The Editorial Team of the Reeth and District Gazette will consider for publication all articles and letters received, but reserve the right to edit or omit due to restrictions of space or content. The "Gazette" will continue to be free from bias and will remain a free issue Community Magazine serving the people of Swaledale & Arkengarthdale.

South of Spain
'ESTEPONA'
Cost del Sol

11/200

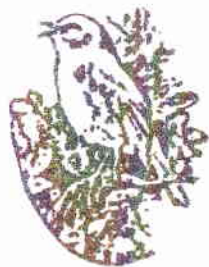
*Holiday flat to rent with Swimming pool,
Tennis court, close to beach & marina.*

Details Telephone - 01748 - 884781

**MUKER
LITERARY INSTITUTE**

**MUKER
AULD ROY
DOMINO DRIVE
& RAFFLE
will be held in
MUKER PUBLIC HALL
FRIDAY 5th JANUARY
at 7.30 pm**

**LAIMAN STONES
LIME & DRYSTONE WALLING
BARN & HOUSE RESTORATION**
Park Head Farm, Arkengarthdale,
Richmond, North Yorkshire. DL11 6RR
Tel. 01748 884730 R/c



Nightingale Hall Nursing Home

THE GARDEN VILLAGE, RICHMOND,
NORTH YORKSHIRE. DL10 4UB

- Highest standards of nursing care
- 24 hour Nursing cover
- Special diets catered for
- Personal alarm system
- Visitors welcome anytime
- Single and shared rooms
- Long and short stay Convalescent, Holiday and Day Care.
- Private & Funded patients welcome
- Aromatherapy, Reflexology & Massage treatments available on the premises

**If you have a relative
or friend who needs
nursing care we will
be delighted to show
you the excellent
facilities available at
Nightingale Hall**

Telephone 01748 - 823003



Dear Sir,

I was recently given the four latest copies of your "Gazette" and found them very interesting. It was suggested that I wrote of my experiences of life in the Reeth District 1937 - 1939.

I do hope that my reminiscences awaken some fond memories. I am sorry it is so long but do hope some parts may interest your readers.

I wrote the original in long hand and my daughter has copied it on to the computer.

Sincerely,

Marjorie Kitson,

Carlton - in - Lindrick

Ed. - We are pleased you enjoyed reading the back issues of the "Gazette". Mrs Kitson. There follows Mrs Kitson's story. We welcome all articles.

MEMORIES OF REETH

By Marjorie Kitson

(known better by my
maiden name RANDERSON)

I thought you might be interested in my connections with Reeth and District.

In October 1937, I came to teach as Junior teacher under Miss Hilda Mangles at Low Row Methodist School. I rented 'Carter Cottage' from Mr. and Mrs. James Raw. I was a young Methodist local preacher 'on trial', still studying and had a great many opportunities of preaching in the Reeth Circuit.

By the time I returned home in May 1939, due to the illness of my father, I had preached in every church but Hurst. This was remedied when, on a return

visit to see Miss Jane Hannah Cleminson of Reeth, she let me take her service at Hurst. Miss Cleminson was a true friend in every way, taking me under her wing when I came as a terrified stranger. I stayed some weekends with her and met people from every village - and she knew everybody.

I found school strange. It was small with classes much different from the 40-50 I had been teaching. It was wonderful to teach about 10-12 children, even if they were at different stages, since I got to know them better, especially when I learned the Swaledale dialect - so unlike my West Riding speech. I became used to the sound of clogs every day and making dinnertime warm drinks, since most of the children brought packed lunches. There were only about 12 children in the village at that time so most of the scholars came from the moorland or the farms and walked a long way to school, even doing daily chores before they left home.

Turn to page... 24 /

STEVE MORGAN

Electrical Contractor of Grinton

**All forms of Domestic
work undertaken.
Inspections & Testing**

FREE ESTIMATES

Tel 01748 - 884163

02/01

REETH COMMUNITY PRIMARY SCHOOL

Headteacher:
Mr G M Wilson

Telephone:
01748 884308



Healaugh Road
Reeth
Richmond
North Yorkshire
DL11 6SP

SCHOOL NEWS

It was standing room only as parents, grandparents, former pupils and others packed the school hall for the annual Christmas Concert. The Ks2 children delighted the audience with their presentation of 'The Grumpy Sheep' and the KS2 pupils gave an excellent performance of 'The Star and the Animals'. The evening concluded with refreshments prepared by the Friends of Reeth School.

The three local primary schools came together at Grinton, St Andrews Church, to bring the Autumn Term to a happy close with a joint Christingle Service. Many relatives and friends swelled the congregation and younger brothers and sisters brought along their Christingles and joined in the service which was led by the Vicar, Reverend Tim Tunley. Joshua Woodward and Edward Birks were the readers and the Thanksgiving was presented by James Keyse, Leanne Brown, Clair Louise Guy, Isabella Haste and Laura Gill.

The significance of the various parts of the Christingle was fully explained by Michael Waggett, Jonathon Hall, Peter Burt, Joshua Sammells, George Parkes and Gary Coates. Pat Cowan played the organ. The collection was presented to and for the work of the Children's Society.

Godfrey M. Wilson
Headteacher

JAMES PEACOCK

**FOR YOUR COAL &
SMOKELESS FUELS**

Approved coal & Fuel merchants

Speedy & reliable deliveries of

Solid fuels & Oils throughout the
Swaledale & Arkengarthdale area

Telephone : 01969 - 650465

01/01

FAMILY HISTORY SOCIETY

Family history enthusiasts or anyone simply concerned to preserve precious family treasures will be able to enjoy a 'master-class' on 'Preventative Conservation of Your Family History Archives' at the Dales Countryside Museum, Hawes on January 10th. The speaker, Catherine M. Wilson, OBE, FSA, FMA, FRGS, is an independent consultant in Local & Rural History from Lincoln, previously Director of the Norfolk Museums Service, who is spending four months at the museum to work on a major project. She will cover preservation of manuscripts, old wills, photographs, material goods etc. and the avoidance of potential threats to artefacts from a variety of sources.

Two weeks later, on January 24th. The meeting will be held in the Methodist Schoolroom, Reeth, when the Rev. Gillian Bobbett will tell the story of the Low Row United Reform Church, from its foundation by Lord Wharnton, high on the hillside at Smarber Chapel. Rev. Bobbett has lists of the Church's ministers (some with family trees) and trustees through the years, so this is an ideal opportunity to investigate your family's non-conformist roots.

Both meetings will be held from 2pm - 4pm, visitors welcome at £1 each, Cleveland FHS members free. In view of the large number of members interested in managing their computers and researching via the internet, it has been decided that the group will run a computer club twice a month, starting on January 17th. The club will be able to use the computer classroom at Middleham Key Centre, from 2pm to 4pm on the first and third Wednesdays each month. Further details regarding any of the above from Glenys Marriott, 01969 663738 or glenys@bishopdale.demon.co.uk

**OPEN
ALL YEAR**

**SWALEDALE
WOOLLENS**

MUKER (Established 1974)

British made and high quality were our founders watchwords over 25 years ago and the same is true today - we still use the best of British wool and the best of British knitters.

**Why not take a look for yourself,
visit our shop or web site.**

You are also welcome to send for our colour brochure and use our efficient worldwide mail order service.

Tel/Fax 01748 886251

Muker, Richmond, North Yorkshire, DL11 6QG

or visit our Web Site:

www.yorkshirenet.co.uk/swaledalewoollens

e: mail - woollens@swaledale.net

**Tan Hill Inn**

Keld • nr Richmond • North Yorkshire

Britains Highest Inn 1732 ft ASL

Reeth 11 miles • Langthwaite 8 miles

Open all day • B&B en suite

**Licensed to get married on the
premises**

Food lunchtimes & evenings

Theakstons & Various guest ales

Alec & Margaret Baines 01833 628246

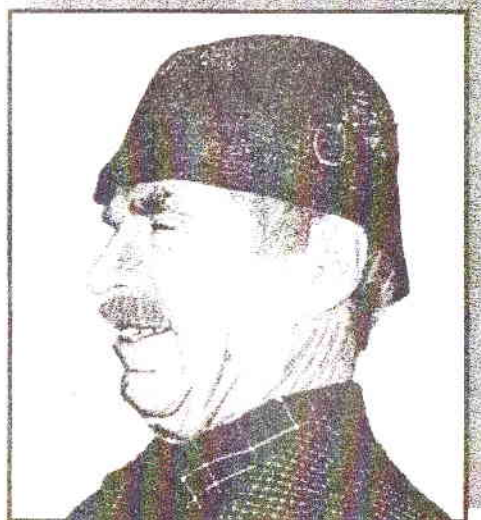
R/C

NEW FULLY ILLUSTRATED EDITION

No. 4 IN THE SERIES

NOW ON SALE – £ 2 .50

In numerous outlets in the two dales



MAJOR FTC WILLIAMS

**Walks with stories written by the Major and
Illustrated with over thirty beautiful drawings
by Marjorie Daniels of Reeth.**

**In this publication the Major starts "His Own"
story, the first instalment of his service career.**

***Vivid descriptions – fuel your imagination with
word paintings of events in his experience.***

WALKING WITH THE MAJOR

**A Selection of Walks in
Arkengarthdale, Swaledale & Wensleydale
Together with a Survey of
Castles, Sham Castles & Follies
By Major FTC Williams**



Fifty signed copies are available – first come first served
from: - Mike Beckwith, Reeth & District Gazette,
Breconside, Muker, Richmond, North Yorkshire, DL11 6QH.
Please add 33p postage to the published price. Thank you
Also available at many outlets in the two dales.

Major Williams is hoping to continue again this year with
his series of Talks of Walks & Stories with slide shows at
Fremington Sunday School - Starting at Easter

Published in aid of the Churches in the Parish of Swaledale

TWO IDEAL GIFTS

1) Give a gift that will last a full twelve months, will prove to be a source of amusement, interest and information. Make an Annual Subscription as a "Friend" of the Reeth & District Gazette your choice of New Year gift to a loved one or friend. For £10 a year you could bring news from the Dales to someone missing home, or to someone who has fallen for the peace and serenity of our beautiful dale. We now have over 100 "Friends" and the 100th applicant, told he was to receive the "Gazette" free, so appreciated reading the "Gazette" he kindly sent his cheque back as a donation to support our Community Magazine. This gentleman lives in Malton, N. Yorkshire, though we also have "Friends" around the world from Australia to Hong Kong. Thank you All and especially you Sir.

2) A New edition (No. 4 in the series) of Major F T C 'Bill' Williams popular books "Walking with the Major", profusely illustrated with over thirty drawings by our own famous local artist Marjorie Daniels has just been completed, set and printed. The booklet contains a selection of Walks in Arkengarthdale, Swaledale and Wensleydale, together with a Survey of Castles, Sham Castles and Follies. The Majors distinctive descriptive prose in 'A Horse to go to Helwith' and 'Plunging Down into the Foregill' Will delight all who read his work. The price is £2.50 per copy - please add 33p postage. Orders sent direct from Mike Beckwith see address below. Cheques to Reeth & District Gazette please. Funds are in aid of the Churches in Swaledale Parish.

Complete
Cut out &
Send to :-

Mike
Beckwith
Breconside
MUKER
Richmond
N. Yorkshire
DL11 6QH

Other Queries
Please Tel.
01748 886307

**Friends of Reeth & District Gazette -
Annual Subscription Application :-**

Name :-

Address :-

Post Code :-

Please enrol me/us as a Friend (s) of the Reeth & District Gazette, and send me/us 12 monthly issues and any special news bulletins. I enclose my/our subscription of £ 10.00. Cheques made payable to "Reeth & District Gazette" please.

Signed :- Date:-

Tel. No. :- e: mail :-

JENNIE RAW

Wishes to thank all relations and friends for the many cards and flowers received, and also for the flowers, cards and well wishes sent since her discharge from hospital. Your kindness is much appreciated. Good wishes to you all for the New Year.

THE MELBECKS SOCIETY

The Society meet in the Institute, Low Row, on the second Thursday of each month at 7.30 pm from October to March. We aim to offer pleasant, interesting evenings to all and cater for a wide interest range. New members and visitors welcome.

Reports : Manuscripts : Letters

*** **

Need any Word Processing completing ?
I can do all your work, whatever type or
layout you require. Please ring Joan on

01748 - 886487

**PLEASE NOTE ALL DEADLINES
FEBRUARY ISSUE
NOON FRIDAY 19th JANUARY**

**HILLARY HOUSE
REETH**

Family run Bed & Breakfast
1 Double - 1 Twin Room
Tea & Coffee making facilities
Colour TV

Tel. 01748 - 884171

C. Blodwell

R/C

**FREMINGTON VILLAGE
TRUST**

Fremington Old Sunday School

As folk will have deduced from the cars and builders vans outside over the last month or so, the Sunday School has been refurbished, with a new kitchen, storeroom and toilets. This has been achieved through a generous grant from the Millennium Trust. We now have a very useful, pleasant and comfortable small hall. It will be officially opened by the Bishop of Ripon and Leeds during his visit to Swaledale on January 10th, but there will be coffee and biscuits on Saturday 13th. January, from 10.00 am - 12.30 pm, when everyone is invited to come and look round. For further information and booking details please contact :- Margaret Evans on 01748-884501

ANDY MALTON

General Building Contractor
no job too small

Plastering & Stone Slate
Roofing Specialist
Tel : 01748 - 884621

R/C

**C. J. BEESTON
Chartered Accountant**

Personal Taxation
Accounts - Payroll - VAT
The Laurels, Reeth.
Tel. & Fax : 01748 - 884535

Memories of Reeth - : continued....

From page 17..

The children taught me a great deal about their lives and since I was greatly interested in nature, brought me many things I had not seen before - globe flowers, a slow-worm and an injured bat caught by the cat, which I nursed until it was well. I also learned that hogs were not just pigs but sheep. The children really enjoyed my ignorance of rural farm life and soon put me right. One thing they really could do well was sing - it was a pleasure to hear them.

I think I managed to teach them something of life out of the Dales and I found them very friendly. One of the pupils was Annie Brown. She is now Mrs. James Kendal and lives in Richmond. She has corresponded with me since I left, especially at Christmas time. In November she sent me the September, October and November copies of your Reeth Gazette.

I found it a mine of information about the places I knew. It is the first time I knew of it. Annie sent it telling me the sad news of the closing of Low Row Methodist Church because I have always had a great affection for it. I was a member there and it had a great influence on my preaching career.

I preached my 'trial sermon' at Reeth and had my oral exam in the schoolroom at Low Row. On August 25th 1938, a Recognition Service for my acceptance as a local preacher on full plan was held in the Low Row Methodist Church.

The church was full and I was presented with a Bible signed by Rev. R.H. Wray and John Bayles. Most of the preachers were present, including Mr. Bell,

Mr. John White and Mr. Pratt. It was a wonderful service and very impressive. You will see by the dates that I have been preaching 62 years - most of it in my present circuit - Worksop-Kiveton in the Sheffield District.

I had some interesting times as a preacher, including crossing the river in a boat, pulled on a wire by the car-driver, to preach at Marrick. The car-driver who had to bring preachers to Hurst, Marske and Marrick on this very frosty November night could not get the car up the hill to Marrick, so he took me by the main road opposite to Marrick Abbey Farm. We walked across a field, crossed by boat and then walked to the farm. I was then taken by one of the sons of the farm on the long walk to the chapel. After the service, I was escorted back to the farm, collected and re-crossed the river and the field.

I met many wonderful and interesting people, including Mr. Matthew Edward Stone, the water diviner, but the folk were so kind and friendly and I have many memories of people and events. My husband and I spent our honeymoon in Reeth in August 1945. We did come for visits until his death in 1981 and I have been with my family occasionally since then. I hope to come again soon.

COLIN BROWNE

- Chimney Sweep -
- Gardens & Lawns maintained
- Contract Work undertaken

01748 818497

Mobile 07931 563455



DORANT LTD CAR AGENTS

"The widest choice of 4X4's in the North-East ... probably"

4x4's

- | | | |
|-----|---|---------------|
| 997 | DISCOVERY TD5 S. Alloys, hill descent, drivers airbag, 16,000 miles. Kinversand..... | £17,995 |
| 995 | MITSUBISHI CHALLENGER S/W 5-dr TD GLS. Air con, leather etc, 14,000 miles. Blue-Silver | £15,495 |
| 985 | FREELANDER 1.8 XE1 Soft Back 3-dr. Airbags, alloys, hill decent, 28,000 miles. Rioja Red | £12,795 |
| 985 | DEFENDER 90 2.5 TDI H/Top. Country pack, Freestyle alloys, 42,000 miles. Cobar Blue Metallic..... | £11,995 + VAT |
| 985 | JEEP GRAND CHEROKEE 2.5 TD LAREDO. 16,000 miles. Hunter Green Metallic..... | £16,995 |
| 98R | HONDA CRV ES. Air con, etc, 40,000 miles. Rioja Red..... | £11,495 |
| 98R | RANGE ROVER 2.5 DSE Auto. Alloys, air con, heated seats, cruise control, 65,000 miles. Rioja Red..... | £23,995 |
| 97P | DISCOVERY TDI 5 5-dr. Alloys, side steps, 7-seats, 41,000 miles. Silver Metallic..... | £13,495 |
| 96P | DISCOVERY TDI ES. Air con, leather, elec seats & sunroof, 79,000 miles. Niagra Grey.... | £12,995 |
| 97P | MITSUBISHI SHOGUN 2.8 GLS TD 5-dr 7 Seats. Air con, 43,000 miles. Blue-Silver | £13,995 |
| 96P | SUZUKI VITARA J LX SPORT Soft Top. 16,000 miles. Scarlet..... | £7,495 |
| 96N | SUZUKI VITARA 2.0 TD 5-dr Auto. 57,000 miles. Rioja Red Metallic / Gold Metallic.... | £8,395 |
| 96N | TOYOTA RAV4 GX 5-dr. Two owners, elec sunroof, airbag, 38,000 miles. Hawaiian Blue | £8,995 |
| 95M | MITSUBISHI SHOGUN 2.8TD GLS LWB 7 seats, 66,000 miles. Charcoal..... | £10,995 |
| 95M | DEFENDER 90 2.5 TDI. H/top. County pack, sunroof, 68,000 miles. Epson Green Metallic | £9,295 + VAT |
| 95M | JEEP CHEROKEE 2.5 TD Sport. 84,000 miles. Dark Blue Metallic..... | £7,995 |
| 94M | DAIHATSU FOURTRAK FIELDMAN TDS. 54,000 miles. Silver Metallic..... | £5,995 + VAT |
| 93L | ISUZU TROOPER 3.1TD LWB DUTY. 89,000 miles. Blue Metallic..... | £7,995 |

CARS

NEW & USED CARS SUPPLIED TO ORDER

NEWGATE GARAGE, BARNARD CASTLE

Tel: (01833) 630620

Mon-Fri 8am-7pm, Sat 8am-5pm

Sun by appointment

092009

53-0500

DORANT 4x4 - DORANT 4x4



The Buck Hotel

DELICIOUS
TRADITIONAL
SUNDAY LUNCH

The Buck Hotel, Reeth
Swaledale, North Yorkshire.

DL11 6SW

Tel. 01748 884210 R/C

Dovetail

For the Best selection of Original
Gifts in the Dales

Antiques & Ethnic Crafts from
around the World

Made to Measure
OLD PINE & OAK

Furniture

Health Beds, Art Deco
Lighting, Kitchenalia,
Carpets & Kilms etc.

Why Travel MILES
We're on your Doorstep

2 Bridge St. BEDALE

01677 426464

OPEN on SUNDAY R/C



Dear Sir,

I would like to say a heartfelt thank you to anyone in the community who has supported me in any way as Headteacher at Gunnerside School.

As I move on to "pastures new" as Head of a much bigger school near Boroughbridge, I take away many memories of the six Christmases I have enjoyed in Upper Swaledale and the years between.

I will continue to live in Wensleydale and play in Muker Silver Band so it will be good to stay in touch and hear how the super pupils and ex-pupils of Gunnerside School are getting on.

They all have my warmest wishes for the future.

I would also like to say an enormous thank you to everyone who contributed to my beautiful leaving gift. Many thanks again.

Sincerely,

~~~~~  
Jackie P. Warburton

Dear Sir,

We enjoy reading about what goes on in the area, and it was particularly interesting to read about the damage caused by the Swale flooding. We have for some years stayed in Gunnerside at 'Rosedene' and have often seen on our walks along the riverside, evidence of the height to which the river rises at times, but we were there last September, when there was torrential rain one Tuesday night, and when we

walked to Muker the following morning we could not understand at first why we were finding dead fish on the path some way from the river. As we progressed however we were astounded at what we saw, and found it difficult to believe that what seems a rather placid river could change so much, literally in minutes. It has been in our thoughts a lot recently in view of the amount of rain we, I suppose you also, have been getting.

We usually frequent 'The Farmers Arms' when staying in the area and always will unless it changes dramatically, but we were very happy at 'The Kings Head' in September, and found Fred and Chris. Very pleasant. Freds beers were "moorish" and the food very good so we hope they manage to make a success of it. To be able to enjoy a meal with a drink without needing to take the car out is a big attraction.

We have been to the Dales every year but one since 1972, staying first in Wharfedale, then Wensleydale and for many years now in Swaledale, which is our favourite, and we never tire of revisiting places we have seen many times before, amazingly we still manage to find places which are new to us as well.

Herewith our "Friends Sub." Thank you and long may the "Gazette" continue.

Sincerely,

Lionel & Jill Jackson  
Ely, Cambs.

## REETH POST OFFICE & BOOKSHOP

FOR ALL YOUR  
STATIONERY  
REQUIREMENTS  
FAXING  
PHOTOCOPYING  
LAMINATING  
BOOK  
SELECTION  
LOCAL INTEREST  
CHILDREN'S & ADULT  
FICTION MAPS &  
GUIDES SECOND  
HAND BOOKS  
BOUGHT  
& SOLD  
ORDERS TAKEN

The Post Office  
Opening Hours  
Mon - Sat. 9 am to 5.30 pm  
There will be no Sunday  
opening for the Post Office.

Books, Greeting Cards,  
& Stationery can be bought  
through the  
Corner Shop on Sundays

**MORE THAN JUST A  
POST OFFICE** R/C



**BRRR!**

**BRRR!**

**Put your coat on and come and look at our  
SNOW SCENE MODELS & PLAQUES**



### JANUARY OFFER

**Our range of models and wall plaques  
are beautifully boxed,  
gift wrapped, tagged, and lovingly topped  
off with a bow! The easiest gift shopping  
you'll ever do!**

**Do your shopping locally, family birthdays  
just around the corner? so are we!**

**ENTRY TO OUR WORKSHOP IS FREE AT ALL TIMES**

### **OPENING TIMES :**

**Monday - Friday 9 am - 4 pm**  
( Production and Shop sales)  
**Saturdays 10 am - 4 pm**  
( Shop sales only)

**Stef's**

**Wish a Happy New Year  
to all our customers**

**Reeth Dales Centre, Silver Street, Reeth.**  
**Tel. 01748 884498 Fax 01748 884334**  
**e.mail : stefsmodeis@talk21.com** R/C



**Christmas Memories:-**

Continued from page 13....

We could hear them singing, though. When we looked back we saw them wandering round and round the field trying to find the style! We continued on our way, calling at Simpson's near the Woodyard, then at the Woodyard itself. Finally we returned to Chapel. The young men shamefacedly arrived later. So our Christmas Carol singing ended, and I remember the long walk back to Castle again, legs aching, but the time passed quickly as we recounted all the exciting things that we'd done over the past few days that Christmas.

**Ed.-** Readers will recall that Mrs M 'Mattie' Moralee is now over 91 years and recently the "Gazette" published her own poem of Reeth Sports and her fond Memories of growing up in Hurst.

**HILLCREST CRAFTS**

Derek J. Harker  
Wrought Ironsmith  
Individually handmade &  
finished wrought iron work.

Tel. 01748 - 884566



Interior, Hearth & Garden Furniture & Fixtures  
Gates, Railings, Spiral Stair Kits & Balustrades  
Security Grills & Pub Bar Fixtures  
Lighting, Music Stands, Weather Vanes.  
All products may be styled to your specification  
making each piece a unique original.

Langthwaite, Arkengarthdale,  
Richmond, North Yorkshire DL11 6EH

### Royal British Legion Poppy Appeal

The Swaledale Branch of the Royal British Legion wish to thank everyone for the support shown during the annual Poppy Appeal. The amounts collected were as follows:

|                      |                 |
|----------------------|-----------------|
| Reeth Post Office    | £80:82          |
| Gift Shop            | £64:09          |
| Mrs D.Guy            | £87:02          |
| Mrs. Whitehead       | £24:33          |
| Clarkson             | £27:14          |
| E. Baks              | £44:75          |
| D.Astwood            | £110:00         |
| Morley               | £59:07          |
| Bridge Inn           | £14:33          |
| Mrs. Morgan          | £25:44          |
| Black Bull           | £59:68          |
| Downholme            | £ 5:93          |
| Buck Hotel           | £13:08          |
| Stefs                | £ 5:10          |
| Simpson              | £32:50          |
| Kings Arms           | £32:50          |
| Quaker Close         | £27:32          |
| Red Lion             | £33:11          |
| CB Inn               | £28:63          |
| Mrs. K. Brown        | £43:50          |
| Bakers Shop          | £ 3:81          |
| Bottom Shop          | £47:14          |
| Burgoyne Hotel       | £26:61          |
| Grinton Church       | £124:02         |
| J. Bentley           | £20:00          |
| <b>GRAND TOTAL -</b> | <b>£1040:22</b> |

**ALL DEADLINES FOR THE  
FEBRUARY ISSUE  
NOON FRIDAY  
19th JANUARY**  
mike@beckwith5.freemove.co.uk

**CHILDREN IN NEED**

On Sunday 19<sup>th</sup>. November 2000, Rose Procter and Lucy Gregg completed a 24 mile sponsored bicycle ride from Tan Hill to Richmond in aid of Children in Need.

They managed to raise £202-70p for this worth cause, and wish to thank everyone who supported them. Well done girls!

**Swale Bridge Club**

We meet every Monday (except Bank Holidays) at 1.30 pm in Fremington Sunday School. We warmly welcome new members or visitors to join us in an afternoon of Duplicate Bridge, and a cup of tea. The charge is £1 per session. We are looking forward to meeting once again in the newly refurbished Sunday School, although, we have also enjoyed a warm welcome in the cosy little Parish Hall at Grinton, whilst the Sunday School has been out of commission.

For further information, please ring 01748- 818101 or 01748-884279.

**Coast to Coast**

**Door to Door Service**

We'll carry your pack so you don't have to!

For Further Details Contact

01642 489173 or Mobile 0802 358457

or write to

8 Althorp, Redcar, Cleveland

TS10 1NY

*Baggage Services*

### 2 Dales Children's Football (Swaledale and Arkengarthdale)

The weather has seen matches and practices washed out but we were in very successful action at Bellerby on 19<sup>th</sup>. November, which was one of the few fine days. Our 'B' team (under 12's) won their League match 5-2 and dominated throughout. Scorers were Adam Calvert 2, David Addison, Chris Westgarth and Colin Blatherwick. This was followed by an 'A' team friendly which we won 12-3. Scorers were Chris Westgarth 3, Lawrence Arnott 2, Thomas Barningham 2, Philip Wickham, Robert Wilhelmly, Michael Harker, Adam Calvert and an OG.

Man of the match for each game respectively was Adam Calvert, who, only now just turned 10, played particularly well in both games and Lawrence Arnott, who played in goal half the second match, has improved significantly. Robert Wilhelmly also played much better. More players are very welcome. We have a busy Schedule now for January.

D. Williams - 884650

**REETH DALESWATCH**

**New Recruits welcome to the  
Reeth Daleswatch.**

If you would like to go out on patrol as part of this community project then please contact :  
01748 - 884370

*A Warm & Friendly Service Awaits*

*YOU at....*

**THE**

**'TOP SHOP'**

**Reeths Hairdressing Saloon**  
**offering a high standard of**

**UNISEX Hairdressing**

**LOYALTY CARDS**

are available to all our regular clients, enabling you to receive Special Offers, Discounts etc...

**GIFT VOUCHERS**

An excellent Gift at various prices

**THE 'TOP SHOP'**

Arkengarthdale Road, Reeth  
(opposite Reeth Garage)

**Tel : 01748 884627**

R/C

**Visiting or Walking in**  
**Arkengarthdale? Call in to**

**Chapel Farm**  
**TEA ROOM**

Relax in the Zen-like calm of WILAW, a tiny remote hamlet 2½ miles beyond Langthwaite off the Tan Hill road. Many of Joyce's home-made dishes are from Grandmother's cook book, wholesome soups, generous open sandwiches, melt-in-the-mouth scones and delicious cakes all complemented by Yorkshire Tea or Fine coffee

**OPEN SATURDAY & SUNDAYS**

**10.30 am to 3.30 pm**

**Joyce Best**

**Chapel Farmhouse, Whaw**  
**Arkengarthdale**

**TEL : 01748 884062**

R/C

## THE REETH & DISTRICT GAZETTE

The "Gazette" is the local community monthly news and information magazine.

Published and printed by volunteers and directed principally for the residents of Swaledale & Arkengarthdale, it also promotes the local businesses and businesses, serving the local community. We now have an extremely good response from our readers.

Thanks to our loyal advertisers and subscriptions from "Friends" (who now number more than 112) the "Gazette" is on a firm financial footing and can with certainty say we reach every home in the area and many more outside our normal circulation zone. Normal print runs are 1500 (40 page) copies, but this is increased to between 1850 and 2000 copies at certain times of the year to meet visitor demand. Your copy of the "Gazette" can be obtained from the following outlets:-

**Arkengarthdale :**

The Red Lion, the CB Inn & Tan Hill Inn  
**Reeth :**

Reeth Garage - The Top Shop - Gift Shop -  
Reeth Post Office / Corner Shop  
Reeth Village Store - Doctors Surgery &  
The Tourist Information Office

**Low Row:**

Punch Bowl Inn & The Post Office

**Gunnerside:**

Newspaper collection point & Post Office

**Muker:**

Post Office - Village Store - Farmers Arms &  
Swaledale Woollens

**Thwaite:**

Kearton Guest House & Newspaper  
Collection point.

**Keld:**

Butt House - Newspaper collection point

Many other establishments collect copies for distribution to their visitors. **Mike "B"**

# MARKET PLACE

**SERVICES**

**75p per 20 words**  
**£1.50 per 40 words**

**FOR SALE**

- **Cakes, Birthday cakes, all kinds of** cakes apple pies and scones made to order Phone Gladys Atkinson on 01748 884550
- **Simon Andrew - Cabinet Maker** Bespoke Furniture, Antique & Contemporary furniture restored, repaired & re-polished tel. 826706 daytime or 886453 evenings
- **PLANS DRAWN** and specifications prepared for all types of building projects. **ADD VALUE** to your property! Contact **PAUL HODGSON**, Tel. 01748 886568 02/01P
- **Piano Tuning & Repairs-** Phone John Hardcastle 01969 624965
- **Cakes for All Occasions -** Decorated to your design or ours, wedding cakes our speciality. Tel 01748 886239 days 886355 evenings.
- **Self Catering Hostel-** Accommodation at the Keld Centre Tel. 01748 886559 for details.
- **Swaledale Caterers -** (Alison Calvert & Lisa Porter)-Fresh Tasty Home made food for any occasion. Details: Tel. 886335 or 886434 10/01P
- **Traditional Signwriter & Signmaker -** Rodney Teasdale 01748 886357 11/01P
- **Reliable Adult** is available for "babysitting" work (Reeth area only) Tel. 01748 884343 ask for Tracy £3/hr
- **Face Painting -** ( children's parties etc.) Very professional - as seen at Reeth Sports Day. - Ring Jane 886084 or Julie 884912
- **Low Row Keep Fit -** Tues. 7pm - 8pm in the Institute. Everyone welcome, see you soon, I (bring a mat) Adverts in these columns may be left with payment at Reeth Post Office or forwarded direct to Mike Beckwith, Muker.

- **I have a large collection of minerals on** display for sale and mail order . 08/01P Contact M. Johnson Tel. 01748 - 886376
- **Twin Tub Washing machine, ex cond.** Suit location where plumbing in automatic impossible. Offers around £40. Tel. 01748 - 884610 01/01P
- **1 - Table -top Snooker Table 6ft x 3ft -** full set balls and two cues - £60 ono and **1 - Fish Tank & stand, filter & heater, 30** inches lng. X 17 inches deep £50 ono Tel. 01748 884618
- **Metal Action Sofa Bed- £55 ono. also** Twin Tub Washer, needs new belt FOC Wall Unit 'Book case' 5ft.tall x 3ft.wide Sliding glass doors with cupboard below. £40 ono. Phone 886461

## PROPERTY TO LET

- Holiday Apartment - To let in Reeth.** Available all year, sleeps 3 - 4 and a baby in a cot. For details Tel. 01748 884535 or visit [www.reeth.freeserve.co.uk](http://www.reeth.freeserve.co.uk) 12/01
- Holiday Cottage in Grinton, nr. Reeth, sleeps** 5 comfortably. Open fire, Stunning views, Walled Garden, Available all year. Phone Mrs Hudson 01279 - 654115 02/01P
- Holiday cottage in Low Row nr Reeth, 17thC** stone cottage with south facing garden and spectacular views. **Open fire.** Newly refurbished with central heating, new kitchen with dishwasher. **Short Breaks.** Tel. Margaret Lewis 01748 884420
- Workshop to let in Reeth Tel. Simon 884327**

## WANTED

- **Wanted all types of furniture, fittings,** appliances, storage heaters, etc to suit traditional dales cottage. phone - 884675
- **Wanted - Car Trailer approx. 6ft. X 4ft.** Tel. 884675

**ADVERTS ?- RING MIKE 01748 -886307 or**  
**e:mail [mike@beckwith5.freeserve.co.uk](mailto:mike@beckwith5.freeserve.co.uk)**



### **RICHMOND & SWALEDALE COMMUNITY EDUCATION IT COURSES FOR 2001**

Tutor :- Geoff Westgarth

#### **1) Database & Spreadsheets**

Starts 11th January 7pm - 9pm  
in Reeth Memorial Hall

This is an 11 week vocational course for those with little or no experience, enabling you to create databases and spreadsheets. Fee is £40. Concessionary fee £13 for those receiving a means tested benefit.

#### **2) Internet**

There is the possibility of offering an Internet course at Reeth Primary School thanks to the generosity of the school. Anyone interested should ring the Community Education Office 01748850171

We are committed to offering IT courses in Swaledale to fit in with the needs of local people and would be interested in hearing from groups who wish to attend a specific course. The venue, time, date and course content could be set up specifically for the group, with a minimum of 6 and a maximum of 10 students.

If you are unemployed and claiming Jobseekers Allowance, a lone parent claiming Income Support, in receipt of Invalidity Care Allowance or Widow's Pension, you may be entitled to **Free** IT training. The Community Education Service is hoping to provide this training in your area, so if you think you might be eligible please give either Viv or Lynn a call on 01748 805171.

### **THE NATIONAL ORGANISATION FOR ADULT LEARNING**

Grants of up to £1000 each will be made available during Adult Learners Week 12th to 18th May 2001, to help organisations in England plan activities which promote learning and reach new groups of learners.

To qualify, project organisers must be able to show that they are reaching out to European Social Funding target groups, ie:- the unemployed people (especially long-term unemployed), women 'returners' and social groups at risk of exclusion. Projects which in addition encourage participation of people living in rural areas and people from ethnic minorities are welcomed.

The activity **MUST** take place during the Adult Learners Week and organisers will be required to secure matched funding (45% ESF and 55% organisation). Proposals must be submitted before 12/3/2001 - for further information Tel. 0116 204 4200 or write Campaigns & Promotions/ ESF Grants, NIACE, 21 De Montford Street, Leicester LE16GE

### **THE BURGOYNE HOTEL**

On The Green Reeth,  
Richmond, North Yorkshire.

DL11 6SN

Telephone & Fax  
01748 - 884292

R/C

### **KATH & DAVE HOLLINGWORTH**

We decided to not send Christmas cards this year. Instead we made a donation to the World Society for the Protection of Animals, particularly to support their campaign which is helping to save bears from the cruel practices they endure in captivity.

This donation was made in memory of our dear son Ben.

We send all our family and friends good wishes for the New Year.

Kath & Dave Hollingworth.

### **MUKER LADIES GUILD**

The Guild will be holding their AGM by kind invitation at 2.30 pm on Thursday 11th January at the Old Vicarage, Muker (Home of Mr & Mrs A. Bucknall)

The AGM will be followed by refreshments and games.

Will Guild members please remember to bring the usual contribution of food to support this annual occasion.

### **ECUMENICAL SUNDAY SCHOOL, MUKER**

The January meeting will be at 4 pm in Muker Public Hall on Sunday, 14th January. A United Churches Service will be held at the same time in St. Mary's Church, Muker. All children are most welcome and parents are invited to the United Service. Mrs MB

### **BISHOPDALE MOTORS**

Land Rover Specialists  
Established 1982



**Servicing + Spares for all Models  
Used Sales + MOT Testing**

Reconditioned engines & gear boxes.  
Discount power steering boxes & pumps  
Large stock of discount spare parts.  
Discount 4 x 4 tyres. Stockists of  
Workshop manuals & 4 x 4 videos.  
Discount batteries & exhausts.  
Also accessories & exchange \* 90 seats

Fixed price quotations

All major credit cards accepted

Labour rate £14 per hour + VAT

We are here to assist you to enjoy your Land Rover, Helpful advice always given.

OPEN MONDAY to FRIDAY 9am - 6pm

Saturday 9am - 2pm

**Tel. 01748 - 850499**

Tower Court, Borough Road  
Gallowfields Trading Estate, Richmond

### **Darlington & Stockton Times**

**'The Dalesman's Bible'**

Swaledale & Arkengarthdale's  
complete weekly newspaper.

All your local news and sports  
plus readers' letters,

What's On, Countryman's Diary,  
Past Times,

Looking Back and much more.

**Make sure of your copy  
by placing a regular order  
with your newsagent.**

**45p - every Friday**

12/00

Are **YOU** just getting by when you could be

### GETTING MORE ??

Thousands of pensioners are discovering that they could be entitled to more money. This extra money is called the MINIMUM INCOME GUARENTEE. YOU should claim it if you think could be entitled, and YOU could be entitled if you have a LOW INCOME every week, do not already get Income Support and you only have savings of £ 8,000 or less.

Always check to see if your circumstances have changed, EVEN if you have tried to claim before. You can apply by phone, this is a FREE number

**0800 028 11 11**

Lines are open from 7am to 9pm - Monday to Friday

If you use a Textphone please call 0800 028 35 93

When you phone please have the following details handy:-

- Your National Insurance Number (on the Pension Book)
- Details of Income & Savings

If you or your partner are aged 60 or over and do not receive income support and do not have savings of £8000 or more ring the above number to CHECK your ENTITLEMENT

#### Superb Holiday Cottage ARKENGARTHDALE

Quiet & Private location with  
excellent views

Sleeps 6 - Centrally Heated - Modernised &  
equipped to an extremely high standard.

Available all year PLUS

Low season mini - breaks.

Mrs G. Stones 01748 - 884360

R/c

#### Tony Sunter

Dry Stone Walling, Plastering &  
General Building Work.

Tel. 01748 884624

Mobile 0771 3427762

R/c

#### ARKENGARTHDALE SCHOOL

We have four computer trolleys in very good condition, surplus to our needs. They cost approx. £120 each to buy, we are offering them for sale at £50 each Tel. School 01748 884335

#### LOW FAGGERGILL COTTAGE

Cosy holiday cottage on a Dales 'working' hill farm with breathtaking views of Arkengarthdale - Sleeps Two  
Ideal base for walking, biking and touring the Dales or simply enjoying a quiet holiday

#### Mrs Glady's Atkinson

Low Faggergill Cottage, Arkengarthdale,  
Richmond, North Yorkshire. DL11 6RS

Tel. 01748 884550

R/c

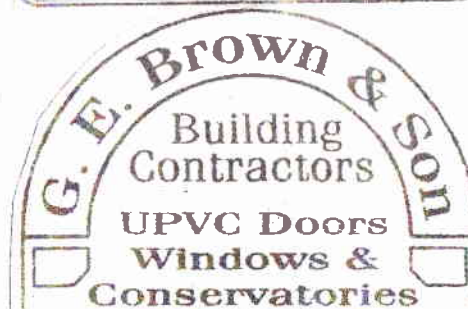


#### ICE CREAM PARLOUR

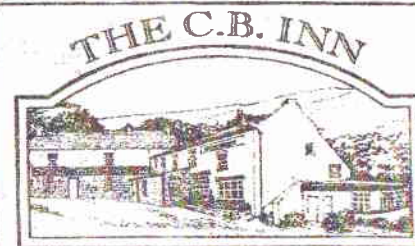
Situated overlooking Reeth Green  
Choose from 16 flavours of delicious  
Brymor Real Dairy Ice Cream, served  
in a glass, or a variety of cornets

Treat yourself to a  
mouth watering Sundae  
Tea & Coffee

01748 884929



The Old Mill Low Row  
Richmond DL11 6NH  
Telephone  
01748 886356



#### ARKENGARTHDALE

*Our outstanding food is fresh, purchased locally and prepared & cooked on the premises to a very high standard.*

*The menu is written up daily on an imposing mirror which hangs at the end of the bar*

Traditional Sunday Lunch

*A warm and friendly atmosphere, fine fresh food in a traditional Inn environment.*

• Booking advisable •

01748 884567

**THE "GAZETTE" CAN  
NOW OFFER ADVERTS  
& SPOT ADVERTISING  
IN CERTAIN COLOURS  
Ring Mike 01748 886307**



**UNA BERRY** SP. Clin. Dip. Arom. MSPA  
CLINICAL AROMATHERAPY

Aromatherapy  
Remedial Massage  
Reiki

Interferential Therapy  
Swiss Reflex  
Indian Head Massage

Tel: 01748 884644



# The Chyll

## Bed & Breakfast

Arkle Town Arkengarthdale  
Set in wonderful countryside,  
with spectacular views of Arkengarthdale  
All bedrooms en-suite with colour TV.  
For details contact Mrs. Sheila Good  
on 01748 884353 or Fax 01748 884015

## DALESWAY DRIVING SCHOOL

Get a top grade instructor,  
with a top notch pass rate,  
at a competitive price  
**01969 - 623299**

Patient, friendly tuition from  
**Christine Whitehead** RUC

## LEYBURN LAUNDRETTE & LINEN HIRE

**01969 - 622685**  
Domestic / Commercial Laundry  
Self Service / Service Laundrette  
Collection & Delivery  
**AQUATEX CLEANING**  
Kinder to Clothes  
Brighter Colours - fresher smell  
**AGENCY at : THE GIFT SHOP, Reeth**

## Superb Holiday Cottage ARKENGARTHDAL

Quiet & Private location with  
excellent views  
Sleeps 6 - Centrally Heated - Modernised &  
equipped to an extremely high standard  
Available all year **PLUS**  
Low season mini-breaks  
Mrs. G. Stones 01748 884360

## Arkleside Hotel Reeth

*Dorothy & Richard*  
*Welcome Non - Residents for*  
*Private Dinner Parties*  
**Tel. 01748 884200**

## THE C.B. INN



## ARKENGARTHDAL

- Nine individually decorated En-Suite Bedrooms with superb views of Arkengarthdale - Private guest lounge.
- No smoking eating areas.
- Garden Bar & Functions Room overlooking the dale, available for Private Parties, Meetings and Receptions.

*A warm and friendly atmosphere, fine fresh food in a traditional Inn environment.*

Fully inclusive breaks available throughout the year.  
Bookings, details or a brochure call  
**01748 884567**

**PLEASE NOTE  
DEADLINE FOR ALL ARTICLES  
for the FEBRUARY ISSUE is  
NOON FRIDAY 19th JANUARY**



**YOU ASKED FOR  
IT**

**SO THIS IS YOUR  
PAGE 37**

Many folk have  
asked that we  
include an events  
dairy page.

We shall make this  
page your page  
**OK**

**FILL IT WITH  
DATES & TIMES**

Send details of your  
do to **Mike Beckwith**

**01748 886307 or**  
**mike@beckwith5.freemove.co.uk**

**FREE OFFER**

**FREE OFFER**

**FREE  
OFFER**

**FREE OFFER**

### GUNNERSIDE HOLIDAY COTTAGE

ETB 3 Star cottage with open fire, beamed ceilings, king-sized bed, Jacuzzi and enclosed garden. 2 - double bedrooms plus large bunkroom sleeping four. Equipped to highest standards. Available weekly or short breaks. Pets welcome.

Tel. 01422 320100

[www.dales-cottages.co.uk](http://www.dales-cottages.co.uk)

THE "GAZETTE" CAN NOW  
OFFER ADVERTS AND SPOT  
ADVERTISING IN CERTAIN  
COLOURS Ring Mike 01748 886307

### Music Tuition

Tuition on Piano, Organ,  
Brass and most Woodwind  
available locally.  
Tel 01748 - 886505

### REETH & DISTRICT GAZETTE

No material may be reproduced in whole or in part without permission. Whilst every care is taken, the publishers cannot be held legally responsible for any errors or opinions in Articles, Listings or Advertisements.

Printed and Published by the  
Reeth & District Gazette.

c/o P. Mike Beckwith

Breconside, Muker, Richmond,  
North Yorkshire. DL11 6QH

Tel. 01748 886307 or

e:mail: [mike@beckwith5.freemove.co.uk](mailto:mike@beckwith5.freemove.co.uk)

### "Gazette" - ADVERTISING

To ensure prompt attention for new adverts, setting up, changes to current advert runs, advert rates and account enquiries. please contact:

Mike Beckwith at above address.  
Articles and adverts are better sent but please telephone with details if necessary.

### ELITE CINEMA LEYBURN



### JANUARY FILMS

Thurs January 4th  
at 5 pm & 8 pm

'THIS IS SPINAL TAP!' (15)

Fri & Sat - January 5th & 6th  
at 5 pm & 8 pm

'HOUSE OF MIRTH' (PG)

Thurs - Sat 11th & 13th  
at 5 pm & 8 pm

'GREY OWL' (PG)

Thurs & Fri 18th & 19th  
at 5.30 pm ONLY  
& Saturday 20th  
at 3 pm & 5.30 pm  
'DINOSAUR' (PG)

Thurs - Sat 18th - 20th  
at 8 pm ONLY  
'BEDAZZELED' (12)

Thurs - Sat 25th - 27th  
at 5 pm & 8 pm  
'THE GOLDEN BOWL' (12)

Thurs FEBRUARY 1st  
at 5 pm & 8 pm  
'DANCER IN THE DARK' (15)

Fri & Sat FEBRUARY 2nd & 3rd  
5 pm & 8 pm  
'THE WONDER BOYS' (15)

### BOX OFFICE

01969 - 624488

Advance Bookings Available

Open Thurs - Sat 2 pm till 10 pm

<http://website.lineone.net/~elite.cinema>

PROGRAMME ALWAYS ON THIS PAGE

01/01

### REETH GARAGE Ltd.

Arkengarthdale Road, REETH, Richmond  
North Yorkshire. DL11 6QT

FULLY REFURBISHED  
M.O.T. TEST CENTRE  
OPEN  
BOOK NOW!  
TELEPHONE - PETER GUY  
SERVICE DEPT.

\*\*\*\*\*

GOOD STOCK OF 4 X 4  
TYRES FOR SAFE WINTER  
MOTORING

\*\*\*\*\*

Why travel miles for your  
Fast Fit requirements?

- New Tyres from £ 18
  - 3 Year Warranty Batteries from £ 36.50
  - Exhaust Systems from £ 40. 50
- Above prices include fitting & VAT depending on make/model of car.

UNIPART



CAR CARE  
CENTRE

For all your motoring needs

SALES + SERVICE + SPARES  
PETROL + DIESEL + MOT  
FORECOURT SHOP

Monday to Saturday  
8 am - 6 pm

TEL - 01748 884243

ESTABLISHED  
OVER 60 YEARS

R/C



### CALVERTS CARPETS

5 Queens Road, Richmond  
01748 - 823604

"WHERE THE BEST COSTS LESS"

Why not pay us a visit at  
our **NEW** Richmond  
Showroom and see our  
extensive range of :-

CARPETS

ROLL ENDS

VINYLS

LAMINATES

RUGS from  
around the world

All at unbelievable prices  
We offer an expert fitting service.

Free Delivery & Estimating

R/C