

Arkengarthdale RED LION INN

Free House — Real Ales
Bar Meals & Snacks all year round
Tel. 01748 884218

12/01

TREVOR J. HIRD

ELECTRICAL CONTRACTOR

No job too small - - **FREE** estimates
Reduced rates for Senior citizens
Telephone 01748 886886

R/C

STUBBS ELECTRICAL LTD ELECTRICAL CONTRACTORS

For all your Domestic &
Commercial Requirements

Rewires, Security Lighting,
Showers, Storage Heaters,
Inspections & Testing &
Portable Appliance Testing.

Tel: 01748 822907

Fax: 01748 822345

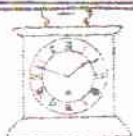
e:mail -

stephen@stubbselectricaltd.co.uk

FREE ESTIMATES



Approved Contractor 01/02



CLOCK WORKS

Clocks & Barometers

Repaired, Cleaned,
Serviced & Restored

Ian Whitworth

Dales Centre

Reeth, Swaledale

North Yorkshire. DL11 6SP

Tel: 01748 884088

10/00

Member of the British Watch & Clock Makers Guild

NORMAN F. BROWN

Chartered Surveyors & Estate Agents

LEADS THE WAY FORWARD IN ESTATE AGENCY

Free market Appraisal without obligation - Free listing on Internet
www.normanfbrown.co.uk

Call now for a professional Service - Bedale & Richmond Offices now
on Internet for property details with photograph and layout plans

Richmond Office: 01748 822473 / 822967

Bedale Office: 01677 422282

Leyburn Office: 01969 622194

07/01

REETH POST OFFICE & SHOP

Booksellers - Stationers - Greeting Cards

Photocopying - Faxing - Word-processing

Open all day Monday - Saturday 9am to 5.30pm

Tel. & Fax. 01748 884201

"More than just a Post Office"

R/C

THERE IS ONLY ONE
WHITE HOUSE
ANVIL SQUARE, REETH

TEL: 01748 884763

12/00

J. E. HIRD

Mobile Butcher

Prime quality fresh & cooked
meat. Groceries. Weekly local
visits & Reeth Friday Market

Tel: 017683 71709

R/C

M. GUY - PLUMBING

For all your

plumbing requirements

AGA'S & RAYBURN'S
SERVICED

Tel: 01748 - 825640

R/C

DAVID E. LLOYD - Chartered Builders

The Gables - Healaugh - Richmond

Tel. 01748 - 884315

R/C

RESLEK SERVICES

Repairs to all makes of washing machines,
fridges, freezers, cookers, microwave ovens, etc.

ALL WORK GUARANTEED - No call out charge

TEL/ FAX: RICHMOND (01748) 823376

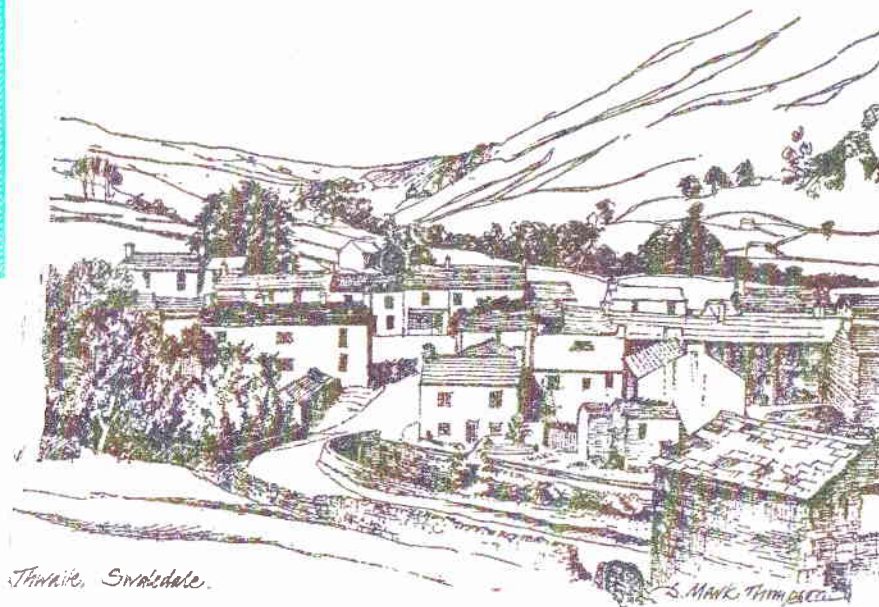
06/01

REETH & DISTRICT GAZETTE

Issue No. 70

Published 1st May 2001

MAY 2001



Thwaite, Swaledale.

The Local News Magazine for Swaledale & Arkengarthdale

FREE COPY - PLEASE TAKE ONE HOME

CHURCH SERVICES

6th May

- 9.00am Keld URC
 9.15am St Mary's Muker
Eucharist
 10.30am Gunnerside Methodist
 Low Row URC
United Smarber Service
 Reeth Methodist
 11.00am Holy Trinity Low Row
Eucharist
 Reeth Congregational
 St Edmund's Marske
Family Eucharist
 6.00pm St Andrew's Grinton
Evening Prayer
 6.30pm Muker Methodist
Holy Communion
 Reeth Congregational

20th May

- 9.00am Keld URC
 9.15am St Mary's Muker
Holy Communion BCP
 10.30am Low Row URC
 Reeth Methodist
 11.00am Holy Trinity Low Row
Eucharist
 Reeth Congregational
 St Edmund's Marske
Holy Eucharist
 6.30pm St Mary's Arkengarthdale
Evensong BCP
 Gunnerside Methodist
Holy Communion
 Marske Methodist
 Muker Methodist
 Reeth Congregational

13th May

- 9.30am St Andrew's Grinton
Eucharist
 St Michael's Downholme
Holy Eucharist Rite B
 10.30am Low Row URC
 Reeth Methodist
 11.00am Reeth Congregational
 St Edmund's Marske
Morning Prayer
 11.15am St Mary's Arkengarthdale
Holy Communion BCP
 2.00pm Keld Methodist
 2.30pm Arkengarthdale Methodist
 4.00pm St Mary's Muker
Sunday School/Eucharist
 6.30pm Gunnerside Methodist
 Marske Methodist
Holy Communion
 Reeth Congregational

27th May

- 8.00am Holy Trinity Low Row
Holy Communion BCP
 9.30am St Andrew's Grinton
Eucharist
 St Michael's Downholme
Holy Eucharist Rite B
 10.30am Low Row URC
 Reeth Methodist
Holy Communion
 11.00am Reeth Congregational
 St Edmund's Marske
Holy Eucharist
 11.15am St Mary's Arkengarthdale
Holy Communion BCP
 6.00pm Holy Trinity Low Row
Evensong
 6.30pm Arkengarthdale Methodist
Spring Festival
 Reeth Congregational

REETH & DISTRICT GAZETTE

EDITORIAL

Hi there. Glad you are still reading! I heard a good one the other day — "If you want to make God laugh, tell Him your plans for the future!" This joke, coupled with a minor disability I suffered caused me to reflect somewhat. I found myself in the difficult position of being unable to use my right hand effectively, (albeit temporary) which meant considerable difficulty in all things — typing for one, and eating! This served to remind me of how sometimes all of us take things for granted. Most of us take for granted the fact that we can tie our shoe laces, fasten our belts, put our socks etc. on without much difficulty. Yet suddenly when we are unable to do the normal everyday things, when that facility is denied us, life becomes really hard. But things can and do happen without warning which totally thwart our plans (hence God laughing at our idea of our future!). We have a perfect example in the current Foot and Mouth crisis that is affecting our country. All plans seem to be on hold (even though the situation appears to be slowly getting better). We can see that our own two dales have been greatly affected by what has happened — there are very few people around, everything is really quiet, and there is that feeling almost as if the 'Sword of Damocles' is about to fall, as well as the feeling that if it is going to fall perhaps it had better come sooner rather than later so that we can all get back to normality. If we can that is! Whilst being somewhat incapacitated this last week I found time to do a bit of reading.

One book I came across was the report of the Archbishops' Commission on Rural Areas— 'Faith In The Countryside', published in 1990, eleven years ago — how time flies. The study of this particular report led to the Two Dales Appraisal, and from that was born the idea for the Reeth and District Gazette. I glanced through came across the following recommendation — "*The commission recognises the need to strengthen the changing rural economy in many areas. It also recognises the need to protect and sustain the countryside. The need to emphasise the interdependence of these purposes should be reflected in strategies for counties and regions.*" How true. And perhaps more so today. One would hope that the 'powers that be' will remember the need to "protect and sustain" after this crisis has gone. All our local business have suffered, as have all businesses associated with rural areas throughout the country. Surely the government of the day can not be blind to the problems, neither should it take a "Phoenix" to open their eyes. But if the pundits are right and we do have a General Election next month, then the 'franchised' had better not be taken for granted — or God might be laughing again at plans made for the future!

GML

Kindly note : Due to the future problematic incapacity of the Editor would you kindly send all articles until further notice direct to the Publishing Team :—

c/o Mike Beckwith, Breconside,
 Muker, Richmond, North
 Yorkshire, DL11 6QH.

Tel. 01748 886307 or e-mail to
mike@beckwith5.freemove.co.uk
 Sent on a floppy disc would be a big help
 (Word or Publisher). Thank you all.

IAN BATY-SYMES

Thank You to all who helped to make April 19th a true celebration of Ian's life and for the donations towards St Mary's Church (Ark) and the MacMillan Appeal. Susan, Haydn and Carlin would like to thank Doctor Bond, the Friary staff and John Westgarth (MacMillan nurse) for Ian's care.

Also thanks to all their friends who have sent cards, flowers, and kind wishes to them at this difficult time.

Blue Peter Bikeathon**2001**

On Sunday May 6th Blue Peter are holding the UK's biggest ever Bikeathon event. All the money raised will go to the

LEUKAEMIA RESEARCH FUND which not only pays for specialist doctors, but is also dedicated to funding research into finding treatments and a cure for blood cancers like leukaemia.

As soon as Emma Hopwood heard of the event she was determined to take part and raise as much money as possible, her own sister having died of leukaemia three years ago, at the age of eight. Emma of Thwaite is taking part at the Darlington venue.

Anyone wishing to sponsor her should contact Emma, Chris or Elaine Hopwood onTel

01748 886308. Thank you

MOONLIGHT

I am the moon, the light of half the world.
I watch the caravans troop silently
Across the hills. The palm trees know my touch.
I cast long shadows where the pine trees stand,
The vast fields of snow bathe in my light.
I am at home where oceans rage and storm;
No stranger to the friendly little hills.
I fill the marble halls of mighty kings
And humble cottages of poorer folk.
I throw a screen of quiet radiance
About the sordid details of the day.
I am the friend of all the lonely ones -
The brave young mother with her ailing child,
The sailor at his solitary watch.
I am the lovers' patron, hear their vows,
And with an evanescent beauty make
Their eager faces fair. Old men dream dreams
On haunting moonlight nights, and young men dare
To face the future armed with glorious hope.
The mother of all genius, I guide
The artist's hand; beneath my magic spell
The poet's cars are filled with melody.
I am the moon, the light of half the world.
On silent moonlight nights great deeds are born. X.Y.Z.

**DEADLINES FOR JUNE ISSUE
MONDAY 21st MAY**

**Please send or e:mail direct to
publisher - see address page 38**

THE CLEMINSON FAMILY

Many old dales families have either moved from Swaledale or died out. The Hammonds, Blenkins, Places and Peacocks just to mention a few. One of these families were the Cleminsons - Bob and Ann Cleminson lived in Grinton, High Fremington and Reeth for many years. They had nine children who were all kind and helpful to everyone. Jane Hannah was brought up by her godly grandmother (Blenkiron) who was a faithful member of Reeth Wesleyan Chapel. As children we were intrigued by the stories of the very simple way of life of Jane Hannah's childhood. Most folk were very poor. The cottage she lived in near the Methodist Manse was a shilling a week rent (5p). They didn't seem to pay any rates. At night they sat in the dark - in the fire-light in winter, knitting socks. They only lit a candle if someone called to see them and usually they were in bed by 8 pm. Jane Hannah (known as Peggy from her teens) worked for Mr. Fothergill (drapers) in the building now occupied by the Reeth National Parks Office. What a wonderful display of goods Mr. Fothergill kept. Every little girl was proud to own a bonnet costing 6d (2½p) and delighted to wear it to go to Chapel on Sunday. She also worked for Josiah Nix, a Wesleyan Evangelist, who went far and wide preaching in the various Chapels. Peggy looked after her grandmother, mother and father until they died. Then she took over the family home and cared for her brother and sisters. She never married, but like all her family, loved children and much of her time was spent with them.

She was Sunday School teacher and leader of the Junior Guild, a meeting held every Wednesday at 6.30 pm. There was usually 12-20 children each week. We sang hymns, heard Bible stories and played games. She couldn't play the piano but as she had a beautiful voice was well able to lead the singing. I don't remember any problem with discipline. In summer we went onto the green to play games or we went down Stoney Lane birds' nesting. As a special treat we went to the Swing Bridge, each of us carrying a 1lb. Jam jar and Auntie Peggy caught a Bullhead for each of us to take home. How she did it I'll never know. She was also a local preacher and often took one or two of us with her up or down the dale. There were in those days eleven chapels. She always carried a bag of sweets in her pocket and gave them to every child she met. She had time for everyone, young or old, and was quick to boil the kettle for a cup or tea whoever arrived. She made lovely apple pies, wheat cake, granny loaf and scones. We helped her make dolls houses out of old orange boxes, papering inside and out with pretty wallpaper. She also made dolls cradles out of tomato boxes padded and covered in bright material. Auntie also went sledging with us down the chapel hill, roasted potatoes on her old fashioned fireplace and took us carol singing at Christmas. She taught us to knit and make fire-lighters from old newspaper. She taught us to love God. Alas! Auntie Peggy has gone these 40 years and no one has ever taken her place. Everill M Squires - Reeth

THE REV. R. PINCK'S SUNDAY WALK

During the depressing period of foot & mouth which is spread all round the Dales at present, let us cheer ourselves up by retracing the steps of the Rev. Robert Pinck, at least by reading about them.

The Rev. Robt. Pinck, b.1824, was Vicar of Hardraw & Lunds for the period 1854 -1913 and lived at Hardraw Vicarage, taking a Sunday morning service throughout the year at Hardraw and an afternoon one at Lunds, 5½miles away over rough country.

The sight of Cotter End towering up into the western sky as you look up from Hardraw Vicarage gives you an inkling of how rough and wild the country is between here and Lunds. From the Vicarage you walk down through the village of Hardraw and at the west end climb fairly steeply up Pen Lane. Quite a well-used track at one time, it was the Coal Road, down which supplies were brought from the coal-pits on Great Shunner Fell above Fossdale. It is now part of the Pennine Way.

If you go in spring time you will see great stretches of bluebells in Bluebell Wood (of course). Just above this wood Pen Lane branches off the Pennine Way and curves round over Humesett ("Hummersett") until suddenly you find yourself almost on a shelf, looking down into Cotterdale, most remote of all the dales. All along this shelf you will find a long row of quite deep shake-holes.

I once took a party of about 15 of the Wensleydale Society for a walk along here, and was at the head of a long line of them, shouting out about these shake-holes. I turned round, and they had all disappeared! We had all had our picnic lunch a short while before this, and they had all gone down into the different shakeholes to "spend a penny"!

Notice the great number of peewits hereabouts in the March/April season. They are of course nesting. They don't like you very much and will frequently dive at you, and then veer away in an effort to lure you away from their nest. This, though completely open to the sky, is deucedly hard to spot. Even when you are looking at one the camouflage is so clever and complete, extending even to the eggs, that you're never sure whether it is the real thing!

Far down the steep slope of Abbotside (the Cistercian Abbot of Jervaulx - they had extensive sheep runs up here) lies Cotterdale Town, consisting of a few cottages (Cotter means 'cottage') and a road that runs alongside the River Cotter back to civilisation. The one farm here is Cotterdale Farm (Mr. & Mrs. Ernest Metcalfe).

HILLCREST CRAFTS

Derek J. Harker
Wrought Ironsmith
Individually handmade &
finished wrought iron work.

Tel. 01748 - 884566



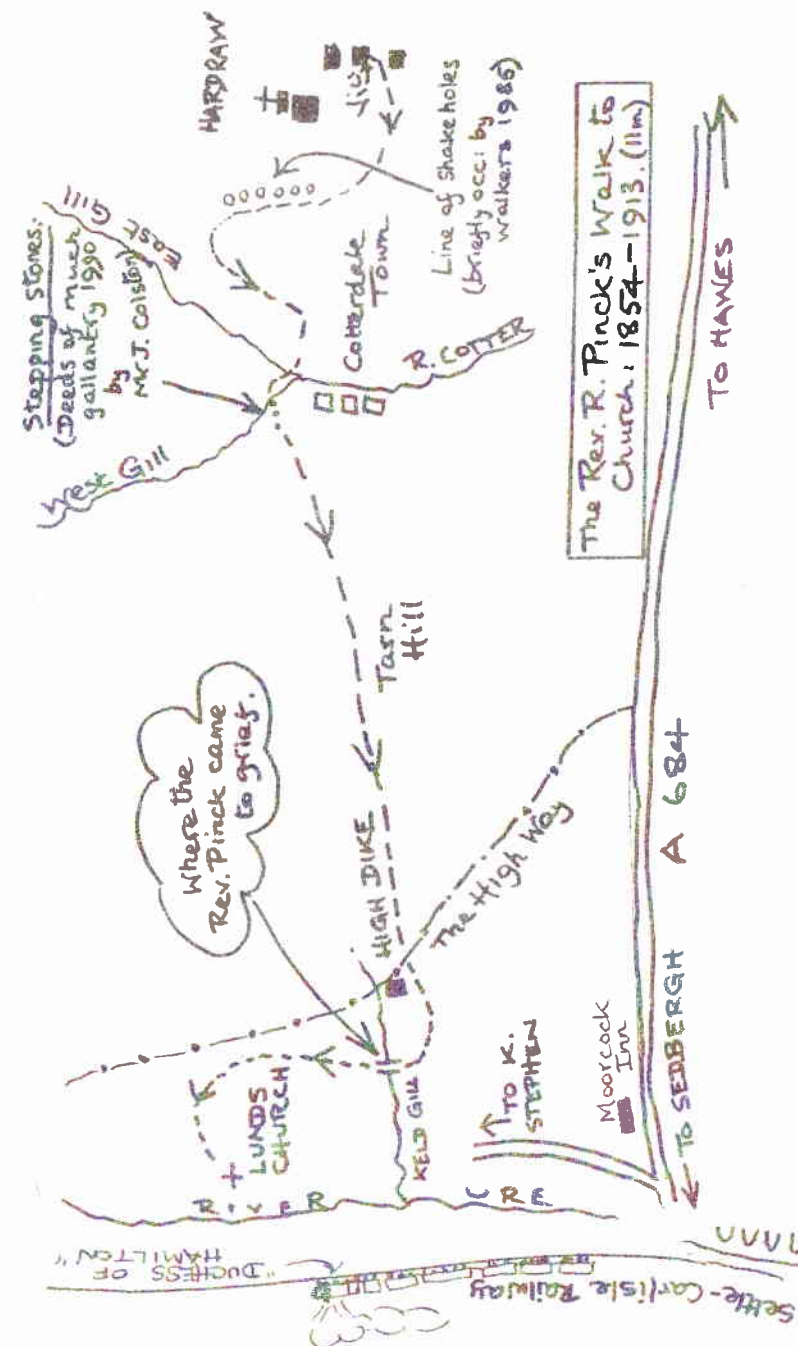
Interior, Hearth & Garden Furniture & Fixtures
Gates, Railings, Spiral Stair Kits & Balustrades

Security Grills & Pub Bar Fixtures
Lighting, Music Stands, Weather Vanes.

All products may be styled to your specification
making each piece a unique original.

Langthwaite, Arkengarthdale,

Richmond, North Yorkshire DL11 6EH



Pinck's Stroll cont....

Every Sunday the Rev. Robert Pinck would have passed by on his way over to Lunds. One of the hazards facing him would have been the Stepping Stones over West Gill Beck, behind the C Farm. Our Walking Club followed Pinck during a stormy period of much rain in July 1990. The beck was high, the Stepping Stones had disappeared under a strong tide, and the scene was dire. But we all got across amid deeds of much gallantry, e.g. one of our number (John Colston) acting as a St. Christopher to three small girls, one at a time (Emma, Michelle, Charlotte).

From the Stepping Stones the track climbs over Tarn Hill. It was at one time the Corpse Way from Cotterdale Town to the church at Lunds and is staked so as to be a guide in the snows of winter. Following the staked track we come down to High Dike.

SWALEDALE WOOLLENS

MUKER (Established 1974)

British made and high quality were our founders watchwords over 25 years ago and the same is true today - we still use the best of British wool and the best of British knitters.

Why not take a look for yourself, visit our shop or web site.

You are also welcome to send for our colour brochure and use our efficient worldwide mail order service.

Tel/Fax 01748 886251

Muker, Richmond, North Yorkshire, DL11 6QG

or visit our Web Site:

www.yorkshirenet.co.uk/swaledalewoollens

e: mail - woollens@swaledale.net R/C

At this point we find ourselves on the High Way. This was the main road to the North, long before the present day tarred roads were even thought of, and was used by the intrepid Lady Anne Clifford with her numerous retinue (of about 300 - i.e. her whole household on the move) on her visits to Pendragon, Brougham, Brough & Appleby Castles. These were not so much visits - more a tour of pretty stringent inspection, with rockers for staff all round as she proceeded from castle to castle.

The track now continues down from High Dike into the deep Keld Gill, crossing this by a single stone slab (actually two, which are supported in the middle). It was at this point that poor old Pinck lost his footing and fell into a snow-drift ten feet deep.

You can see exactly where and how this accident happened, as described by H. Speight on P.490 of his "Romantic Richmondshire", 1897.

The Settle-Carlisle Railway would hardly have been working in his time, but you do get an excellent view of the railway line from the High Way, and if you are lucky you may perhaps see an express train, hauled by two diesel engines up the long Ais Gill Incline to its highest point, at Ais Gill Cottages. You may even be blessed with the vision of a single great steam locomotive, the Duchess of Hamilton (built 1938) doing the same thing in all her glory of steam!

please turn to page... 33

A Warm & Friendly Service Awaits

YOU at....

THE

'TOP SHOP'

Reeths Hairdressing Saloon

offering a high standard of

UNISEX Hairdressing

LOYALTY CARDS

are available to all our regular clients, enabling you to receive Special Offers, Discounts etc...

GIFT VOUCHERS

An excellent Gift at various prices

THE 'TOP SHOP'

Arkengarthdale Road, Reeth
(opposite Reeth Garage)

Tel : 01748 884627

R/C

**Visiting or Walking in
Arkengarthdale? Call in to**



Relax in the Zen-like calm of WHAW, a tiny remote hamlet 2½ miles beyond Lanthwaite off the Tan Hill road. Many of Joyce's home-made dishes are from Grandmother's cook book, wholesome soups, generous open sandwiches, melt-in-the-mouth scones and delicious cakes all complemented by Yorkshire Tea or Fine coffee.

Open daily

10.30 am to 4.30 pm

Joyce Best

**Chapel Farmhouse,
Whaw, Arkengarthdale**

TEL : 01748 884062

R/C

BISHOPDALE MOTORS

Land Rover Specialists

Established 1982



**Servicing + Spares for all Models
Used Sales + MOT Testing**

Reconditioned engines & gear boxes.
Discount power steering boxes & pumps
Large stock of discount spare parts.
Discount 4 x 4 tyres. Stockists of
Workshop manuals & 4 x 4 videos.
Discount batteries & exhausts.

Also accessories & exchange * 90 seats
Fixed price quotations

All major credit cards accepted

Labour rate £14 per hour + VAT

We are here to assist you to enjoy your Land Rover, Helpful advice always given.

OPEN MONDAY to FRIDAY 9am - 6pm

Saturday 9am - 2pm

Tel. 01748 - 850499

Tower Court, Borough Road

Gallowfields Trading Estate, Richmond

R/C

Darlington & Stockton Times

'The Dalesman's Bible'

Swaledale & Arkengarthdale's
complete weekly newspaper.

All your local news and sports
plus readers' letters,

What's On, Countryman's Diary,

Past Times,

Looking Back and much more.

**Make sure of your copy
by placing a regular order
with your newsagent.**

45p - every Friday

THE CB INN ALTERNATIVE Quiz Night?

The last Friday of every month.
No experts - Prizes for best & worst
Also Beer Card Draw Night

Tel. 01748 - 884567 R/C

Natural Spiritual Healing and Counselling



Natural Spiritual Healing can help many physical, mental, emotional and spiritual problems. Animal Healing is also available this makes a wonderful complement to standard veterinary care.

For more information and appointments please telephone

Maureen Clayton, a Chartered Psychologist,
with Diplomas in Counselling and Natural Spiritual Healing,
on 01748 886188 R/C

Straying Animals Pose Threat to Spread of foot & mouth

North Yorkshire County Council is warning that straying animals could lead to a further spread of foot and mouth disease in the county. Owners are asked to ensure that ALL animals do not stray.

The County councils policy is that animals found straying will be returned if possible, or destroyed if owner not traced. As a precautionary measure, should animals returned to owners develop foot and mouth, a log of all possible contacts made by the animals is kept to allow MAFF to trace the disease.

Due to the seriousness of the disease, owners of animals which have strayed may face prosecution. The Chief Executive said - "It is vital that all measures to prevent the spread of this disease are put in place and adhered to by everyone involved".

The Chyll

Bed & Breakfast
Arkle Town - Arkengarthdale

Set in wonderful countryside,
With spectacular views of the dale.

All bedrooms en-suite with colour TV.

For details please contact

Mrs Sheila Good.

Tel. 01748 884353

Fax 01748 884015 L101

Tony Sunter

Dry Stone Walling, Plastering &
General Building Work.

Tel. 01748 884624

Mobile 0771 3427762 R/C

FIRST STEPS TO FREEDOM

First Steps to Freedom [FSF] is a charity offering help, advice and support to families and sufferers of stress/anxiety disorders, such as phobias, panic attacks, obsessive compulsive disorder and body dysmorphic disorder. It also gives help, advice and support to families and friends of those with borderline personality disorder.

More volunteers are needed for the FSF helpline.

A volunteer must have a telephone and be able to spend four hours, one day a week, on a regular basis.

FSF is looking for people to work from their own homes. A separate telephone number will be installed, and full training given over the telephone, together with senior volunteers as back up and monthly support group meetings.

All telephone costs are paid by FSF. For further information

Contact: **First Steps to Freedom, 7 Avon Court, School Lane, Kenilworth, Warwickshire. CV8 2GX. Tel: 01926 864473.**

THE CORNER SHOP ON THE GREEN

FOR ALL YOUR GROCERY
REQUIREMENTS

ORDERS TAKEN FOR MEAT

FRUIT AND VEGETABLES

NOW WITH

THE NATIONAL LOTTERY

Monday to Saturday 9 am - 5.30 pm

Sunday 10.00 am - 1.00 pm

IT COULD BE YOU
AT

THE CORNER SHOP



THE NATIONAL
LOTTERY

COLIN BROWNE

- Chimney Sweep -

• Gardens & Lawns
maintained

• Contract Work
undertaken

01748 818497

Mobile 07931 563455



Cosy Holiday Cottage for two!

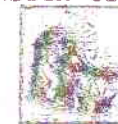
Peaceful location with panoramic
views of Arkengarthdale.

Ideal for walking or just relaxing.

Tel. Shirley Gale 01748 - 884779

VISIT

Swaledale Folk Museum.
Reeth Green



Open every day - 10.30am to 5pm
until October 31st.

Tel. 01748 - 884373



FOOT & MOUTH OUTBREAK GUIDANCE FOR BUSINESS RATEPAYERS & COUNCIL TAXPAYERS

The following guidance may be useful if you are suffering due to the Foot & Mouth Outbreak:-

• ADVICE FOR ALL BUSINESS RATEPAYERS

- * Contact the Valuation Officer to seek reduction in rateable value (website address www.voa.gov.uk, telephone number 01423 830800)
- * Write to Richmondshire District Council (Financial Unit, Frenchgate House, Richmond) if you wish to apply for Hardship Relief. Please ring 01748 829100 Extension 231, 321 or 229 for advice.
- * Defer payment of the first two instalments for 2001/2002 i.e. due on 15 April and 15 May 2001. Payments to resume on 15 June, ten instalments still applicable, last payment due on 15 March 2002 (NB. Those paying by Direct Debit SHOULD NOT cancel their instruction with their bank)
- * Three month extension to the deadline for appeals made to the Valuation Officer i.e. to 30 June 2001.

• ADVICE FOR BUSINESS RATEPAYERS IN RURAL SETTLEMENTS (I.E. PARISH/WARDS UNDER 3,000 POPULATION)

- * Legislation has now been passed which extends the 50% Mandatory Rate Relief to SOLE village pubs and petrol filling stations with a rateable value of less than £9,000.
- * The 50% Mandatory Rate Relief to ALL food shops in rural settlements has not yet been approved by Government.

Please ring 01748 829100 extension 231 or 321 for further advice.

• ADVICE FOR COUNCIL TAXPAYERS

- * If you are on a low income and are finding it difficult to pay the Council Tax (or Rent) you may qualify for benefit. Please contact the Council on 01748 829100 Extension 248, 325 or 326 for advice.

Reeth & District Angling Club - March / April 2001 - Club News

Foot and Mouth Disease - The effects of the F&M infection have been far reaching for everything and everybody in the Dales, not forgetting our neighbours who are massively affected and regrettably fishing is no exception. The 26th March came but the fishing season could not begin. The past week or two has also seen the numbers of cases increase in Wensleydale to 11 (18 in our area of North Yorkshire). All our water is accessed from public rights of way or through farmland. With both now legally out of bounds, the start of the fishing season is postponed until further notice. The committee will keep the situation under close scrutiny and will of course notify you of developments as soon as they happen. Keep a lookout in the Reeth and District Gazette too for Club news. Unfortunately we cannot foretell when the season will open but it looks as if April and May are definitely lost; the latest prediction from MAFF epidemiologists indicate a return to near normality in late June/early July. Given the situation the committee are keeping under review the question of subscriptions however, we urge all members to pay their dues in order to keep their membership current and of course we will notify you of the consequences as soon as definite news is to hand.

The annual dinner had to be postponed as a result of the disease; again the committee will review the situation in the light of events and reschedule accordingly.

Committee meeting dates - The committee will meet on the following dates :- 21st May, 23rd July, 27th Aug, 29th Oct, 28th Jan 2002, & 26th Feb 2002 (AGM) The next meeting will be held at the Kings Head, Gunnerside and will start at 7.30 pm. Special topics for review and resolution will be, Membership citification, Digital mapping and Cash balance/contingency fund level.

2001 Officials - The AGM elected the following members as officers :-

Chairman	Mark Stephenson	Cmte Brian Sedgewick
Secretary	Mark Held	Cmte Tracy Youll
Treasurer	Ashley Markham	Cmte Christine Porter
Vice Chairman	Bob Forsyth	Cmte Willie McCleary
Cmte	Hugh Adams	Cmte Lesley Calvert

Last, but by no means least, the club has a new President - Ralph Porter. A well deserved honour.

Stocking - Despite the dreaded FMD, it is anticipated that this activity will be able to be completed and plans have been made for new stock to be introduced sometime in May. At least when the season eventually gets under way, the water and the stocks should be in excellent condition. Conversations with regular fishing members indicates that our waters remain healthy with very good shows of sporting fish and this is true from Rampsholme to Stainton Lane end. One member reports good catches last year on over 25 trips!

RF 20th April 2001

Contacts : Bob Forsyth 01748 884807 and Mark Held 01748 886067

CHRISTIAN AID WEEK 13th - 19th MAY — House to House

Christian Aid supporters will distribute envelopes on a 'house to house' basis as usual during Christian Aid Week (13-19 May) throughout the villages of Upper Swaledale and Arkengarthdale, Marrick & Marske. Farm tracks and roads will not be used by collectors and these homes will be sent an envelope in the post during the week, which will give the opportunity of donating without any 'farm to farm' contact being made by our volunteer collectors. If you receive an envelope by post and wish to make a donation then please drop off your envelope at Reeth Post Office or to your usual collector as appropriate. Please write your nearest village on your envelope if it is left at the Post Office so we can include it in your village total. Ta!

Church Service

An ecumenical service will be held on Friday 11th May at Grinton Church at 7.30 pm with a Christian Aid Speaker and the Swaledale choir in attendance. Anyone requiring a lift to this service will be found one. Everyone is very welcome to come and hear more about Christian Aid and its work at home and overseas.

Persons requiring a lift or intending to attend the service and able to offer a lift are asked to phone;

Susan Allison,

Chairman —

Upper Swaledale &

Arkengarthdale

Christian Aid

Committee

Tel 01748 884366

Thank you.

**KEARTON
COUNTRY HOTEL**

Thwaite - Swaledale

Famous Traditional
Sunday Lunches

Bookings are now being taken for our
Three course meals: Choice of starters,
wide selection of Main courses and
delicious home made sweet from the trolley

I Enjoy your Sunday Lunch
When taking a meal receive
£1.50 off a bottle of house wine
by producing this voucher. **J**

Ian & Jacqui

Welcome non residents to our fully
licensed Bar, Restaurant and
Coffee Shop

OPEN SEVEN DAYS A WEEK

Tel. 01748 886277 09/01

The "Gazette"
is able to
offer
Colour and
spot
advertising
similar to the
adjoining
Kearton
Country Hotel
advert in a
number of
attention
grabbing
colours.

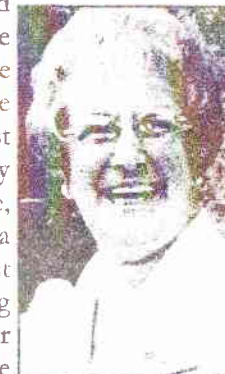
For all your
advertising
requirements
please call
Mike
Beckwith
01748 886307
Or see e:mail
address on
page 38

'Drop in' & Market Stall

The 'drop in' at Reeth Methodist chapel on Friday 18 May will also be for Christian Aid funds by kind permission of Revd. A. Bell and the Methodist Chapel. A cake and produce stall will also be held at Reeth market on that same morning and any produce will be gratefully received. If you would like to donate to the stall and want any items collecting then please contact Joy or Susan on 884316 /884366 and arrangements can be made to have them picked up. On behalf of all the 2 Dales volunteer Christian Aid collectors, may I extend our thanks, in advance, for your special assistance this year during the difficult circumstances that we are all currently experiencing. Susan Allison

MUKER SUB- POST MISTRESS RETIRES

Mrs Mary Guy of Armsleigh, Muker retired on Wednesday 25th April after twenty-four years serving the folk of the Upper Dale. Mrs Guy ran a grocers shop in Muker since 1973 and incorporated the Post Office into a small corner of the grocers shop on the 10th June 1977 when the previous post master gave up. Mrs Guy continued with the Post Office, though stopped trading as a grocers shop in 1982. The Post Office in Keld village having previously closed and Muker dealt with all post office



business in the Upper Dale. In all her years of service Mary saw many changes both in the dale and within the Post Office. As years rolled on more and more visitors came to the area and they called for stamps, to cash cheques and just for information. Visitors came from all corners of the world, some became friends as they were frequent visitors. Originally there were no security screens as we know them now. The biggest P. Office change was the introduction of online computer terminals to transact business in March 2000. And just lately self stick none lick-able stamps. Some sad changes have been when older folk pass away and no longer call for their pensions. The population of the dale has dwindled in the 24 years. Many famous people have popped in to meet Mary, MP's for the constituency, Film Stars - John Alderton, Lisa Harrow, Robert Hardy, Christopher Timothy nearly all the cast of the Film....

All creatures Great and Small, The TV Vet Series of Herriott's stories. EU Commissioners and many, many others. Mary Guy's Post Office has been featured in National Press Advertising and has been the drop off point for parcels, the General information point displaying Posters, County and Parish Council notices, Posters advertising all sorts of Do's. Show case for the Muker Silver Band trophies and history. Key holder for service calls and much, much more. Mary says - "I always planned to

retire at normal retiring age and I hope to spend more time enjoying my family and Grandchildren, the freedom of walking when I feel like going, not being tied, and possibly visiting my older customers. Many of whom are related in one way or another. Living on the premises I have never been able to say - *I cannot get to work because of the snow.*" (You have to live in the Upper Dale to understand that comment) During Mary's last day at work many folk popped in to leave cards and offer good wishes for a happy contented retirement. Your reporter noticed that the office clock had stopped!! Thanks & Good Luck Mary.

The newly appointed sub-postmaster is Mr Michael Peacock, who commenced work on Thursday 26th April.

Kindly note that new opening hours will apply, Monday to Friday 9 am to 1 pm. only - No Saturday opening. **PMB**

DID HOLY FEET TREAD HERE?

Legend claims a biblical link with a Somerset house now on sale:-

Somerset legend claims that the wealthy biblical merchant Joseph of Arimathea brought his young great nephew, Jesus Christ, to Glastonbury, Somerset, then on to the nearby port of Pilton. There the pair would have alighted from a shallow-bottomed punt on to a wooden landing and walked across the grounds now belonging to the ancient Pilton Manor, which has just come on to the market.

Part of this remarkable legend was picked by Blake in his hymn "Jerusalem", in which he asks: "And did those feet in ancient time Walk upon England's mountain green? And was the Holy Lamb of God on England's pleasant pastures seen?"

In 1987, Janie Cousins wrote an account of the holy visit to Glastonbury, Ancient Legends of Christian Somerset, in which she pieced together folklore and recorded history. Joseph was Mary's uncle, who sheltered her, her husband, and Jesus in Arimathea after the 12-year-old gave his parents the slip to spend three days in the Jewish temple in Jerusalem on a visit to celebrate the Passover. Then, says Cousins, Joseph suggested taking the boy on a trading trip to Thule, which the Romans called Britannia.

Today the pretty village of Pilton, six miles from Glastonbury, stands some distance inland from the Bristol Channel, but once water covered what is now the Somerset Levels, making Glastonbury and its Tor an island, and reached all the way to Pilton—once known as Pooltown.

It is known that Phoenician traders brought spices to the Glastonbury area and archaeologists have identified Mendip lead in excavations at Babylon.

As an adult, Jesus is said to have returned to Glastonbury on his own, working his passage as a ship's carpenter, and to have built himself a wood and willow house in which he spent two or three years before returning to Judea.

The story goes that when the crucified Jesus was seen alive after his tomb was found empty, his uncle Joseph was in mortal danger and was forced to flee. He is said to have returned to Glastonbury, where he was shown the house Jesus had built. There he and other Jews met to say prayers, making it the first Christian church in Britain.

The earliest mention of Pilton Manor was in 1189 when a vineyard was established for Glastonbury Abbey. After 1235 a small house was built there for Michael of Amesbury, abbot of Glastonbury, of which a large dovecote and stout cellar rooms survive. Successive abbots enlarged it in the 13th and 14th centuries and it was given an unusual layout - two mediaeval halls built at right angles.

This was a favourite summer residence for the abbots until Henry VIII took it in 1539 during the dissolution of the monasteries. A decade later, Edward VI granted the manor to the Duke of Somerset.

continued on page... 25

THANKS

Goff and Pat Wilson would like to thank everyone who has sent cards or expressed their sadness at the loss of Denise. Your words, written or spoken, have been of great support throughout her illness and at her death.

ILLUSTRATED TALKS

We are pleased to announce that the 2001 season of talks in

Fremington Sunday School
At 8 pm Monday Evenings

are as follows

7th May - Tripping along to Kitley Hill
Major FTC Williams

14th May - Stars, Constellations &
Galaxies - Prof. G Marr

21st May - Four Seasons in the Dales
Hugh James

28th May - Nun Cote to Glittering Star
Major FTC Williams

4th June - The 2nd WW on the Home
Front - Ian Dewhirst OBE
(this talk in Grinton Church)

Admission £2.00 adults; £1 children
This includes Coffee & Biscuits
Proceeds to Grinton Church

Kindly note that sadly, due to the possibility of introducing foot and mouth disease there will be no Guided Walks at present. Also the Car Boot sale planned for 28th May has been cancelled, again because of the present crisis.

Further enquiries please Telephone
01748 886424 or 884578
Fremington Sunday School lies between
Grinton and Reeth just off the road.

THE PUNCH BOWL INN LOW ROW

UNDER NEW MANAGEMENT

Dave and Lorraine welcome all
customers old and new.

Please note we are still

OPEN ALL DAY EVERY DAY

Food served

lunch time and evening.

Double and twin en-suite rooms and
Bunk rooms and a separate Bunk
House.

TEL. 01748 886233 R/C

South of Spain

07/01

'ESTEPONA'

Costa del Sol

Holiday flat to rent with Swimming pool.

Tennis court, close to beach & marina.

Details Telephone - 01748 - 884781

GAZETTE ADVERTISING TEL. 886307

or e-mail - mike@beckwith5.freemove.co.uk

R & T DECORATORS

JASON ROBINSON

- TIME SERVED - FULLY QUALIFIED
- ALL WORK GUARANTEED
- COMPETITIVE PRICES

FOR A FREE ESTIMATE

CALL :- 01748 812665



LAIMAN STONES

LIME & DRYSTONE WALLING
BARN & HOUSE RESTORATION

Park Head Farm, Arkengarthdale,
Richmond, North Yorkshire. DL11 6RR
Tel. 01748 884730 R/c

ARKLESIDE HOTEL - OPEN DAY IN AID OF REETH SUSPENSION BRIDGE - RESULTS

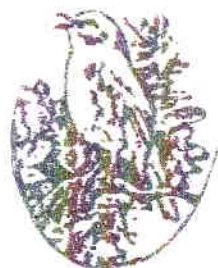
Dorothy, Richard and Staff at the Arkleside wish to thank everyone who supported our Open Day on Easter Monday, it was a great success and we had many visitors, in total an amount of £1,300 was raised which will be presented to the National Park Appeal. We would also like to thank all who donated prizes for the Raffle & Tombola.

The Gift Shop	Champagne	The Top Shop	Hair Do
Reeth Village Store	Wine	Hazel Smith	Original Picture
Clock Works	Clock	Chris & Pete McKay	Boxed Wine Set
Reeth Post Office	Reeth Plate	Anne Coates	Earrings
Swaledale Woollens	£25 Gift Voucher	E. Hauxwel	Benedictine
Wensleydale Dairy	3- Family Vis Passes	Red Lion	Bottle of Asti
Philip Bastow	Print of Reeth	R & S Good	Chocolates
Burgoyne Hotel	Picture Frame	Mr G Birks	Eggs & Honey
G E Brown & Son	Cordless Drill	Stef's Models	Plaque
Arkleside Hotel	Dinner Voucher	Black Bull Hotel	Fleece
Y D National Park	A Fleece	A Kind Donation of	Set of Glasses

Winning Numbers for the Raffle were as follows:-

Pink 276	Pink 146	Light Blue 281	Pink 301
Pink 16	Light Blue 386	Dark Blue 41	Light Blue 316
Light Blue 331	Pink 286	Light Blue 396	Dark Blue 291
Light Blue 476	Pink 216	Light Blue 496	Dark Blue 386

Pink 201 To Claim Tel. 01748 884200 or e: mail - info@arklesidehotel.co.uk



Nightingale Hall Nursing Home

THE GARDEN VILLAGE, RICHMOND,
NORTH YORKSHIRE. DL10 4UB

- Highest standards of nursing care
- 24 hour Nursing cover
- Special diets catered for
- Personal alarm system
- Visitors welcome anytime
- Single and shared rooms
- Long and short stay Convalescent, Holiday and Day Care.
- Private & Funded patients welcome
- Aromatherapy, Reflexology & Massage treatments available on the premises

If you have a relative
or friend who needs
nursing care we will
be delighted to show
you the excellent
facilities available at

Nightingale Hall

Telephone 01748 - 823003

R/C

Thank you for supporting your local community magazine

Upper Dales Family History Society

The Upper Dales Family History Society met in April for the first time in the Key Centre, Middleham. Members were treated to a thoroughly entertaining and informative talk by Andrew Todd on "Record keeping for Family Historians". Andrew runs the well known publishers Allen & Todd in Ramsbottom, and is the author of a number of books of research tips as well as producer of a wide range of forms and charts to aid record keeping. During his talk, illustrated by examples from his own family tree, he demonstrated the importance of maintaining a simple, easily accessible reference system which could be understood by future generations. Using sources, such as overseers' records and wills, he showed how it was possible to build up a picture of even the most elusive ancestor by accurate note taking and careful cross referencing. Finally he reminded members not to overlook the often forgotten resource of living family members and to record their memories now for the benefit of future generations.

In addition to the regular table of family history books and other publications, the "Bishopdale Booklets" produced by Mrs Jean Kington are now available for sale at the main Wensleydale and Swaledale meetings of the society. Please phone Ann Hartley on 01969 663308 for further details. The booklets are also available direct from Mrs Kington at 65 Elder Close, Badger Farm, Winchester, Hants, SO22 4LH. Tel. 01962 869152. In addition to the regular local meetings and the twice monthly computer club

held in the Keys Centre, the Society now has a thriving e-mail group, open to anyone with an interest in the history of the area, wherever they are based. Together with the website which lists forthcoming meetings along with notes of past ones, this has opened up participation in the group to dales "exiles" all over the world.

For details regarding any of the meetings ring Glenys Marriott on 01969 663738, email glenys@bishopdale.co or see the group's website at www.bishopdale.demon.co.uk

MUKER LADIES GUILD

We look forward to our next meeting on 3rd May at 7.15 pm in Muker Public Hall. Louise Butler of Hurst, will be demonstrating her skills at flower preserving/pressing and card design. Louise plans to run a little workshop at the meeting when members can try their hand at card design.

Non members are very welcome.

Margaret Beckwith, Secretary



The Kings Arms

SWALEDALE'S INN ON THE GREEN

REETH

Open all day every day
We offer an appetising Lunch & Evening Menu
as well as Traditional Sunday Lunch.
Cask Conditioned & Guest Ales
Live Music every Weekend, for details please
TEL : 01748 - 884259

R/C

Please do all you can to support your local Community Magazine

THE ROAD TO MANDALAY

"When you go home, tell them of us and say, that for their tomorrow we gave our today". Those words are now used at Remembrance Day events and were written by an Army Chaplain of the XIVth Army after the Battle of Kohima. I saw them written on a board at the war cemetery at Kohima a few days after the battle. (I was travelling in a Jeep with a RAF Chaplain who was going to say a Requiem there.) That battle in 1944 was the turning point of the war in the Far East. The Japanese had not violated the frontiers of India since they invaded Burma in 1943 until July 1944 when they crossed the frontier into Manipur and captured Imphal, thence into Nagaland to Kohima where the XIVth Army stopped them. From then on the war machine trundled South East, ultimately relieving Burma, Siam and Malaya until the final Japanese surrender on 15 August 1945. My RAF service in India was mainly with Hurricane Squadrons. We had left Ramu in East Bengal in May 1943 to be located at airfields towards the North East frontier of India. Chittagong and Feni in East Bengal, Agartala in the Indian Prince's State of Tripura and thence to Dimapur on the borders of Nagaland and Manipur in Japanese hands. I mention these airfields because it is interesting to look at a present day map of India and see that all these airfields, constructed by the Royal Engineers for the use of the RAF, are now used as civil airfields. The Royal Indian Air Force base at Dum Dum is now Calcutta International Airport. This is just an indication how the war years moved on civilisation in the Third World.

In September 1944, I was with 113 Squadron at Dimapur where we received Hurricanes converted into Hurribombers. The Mk IV Hurricane was armed with four 9mm Cannon guns which made it an effective fighter plane in aerial defence or strafing. The Japanese had "dug in" in "foxholes" - deeply tunnelled and well camouflaged in the jungle. The Hurribomber was converted by taking out two of the cannons (one from each wing) and replacing them with 2 x 250lb "twister" bombs, (one under each wing). With intelligence supplied from army patrols and local people "foxholes" were located by pilots and the bombs released with devastating effect. (The principle of "twisting" bombs into tunnels had been perfected by Dr Barnes Wallis, the boffin who had designed the bouncing bombs used to destroy the German Ruhr dams). Our 113 Squadron motto was "Velox et Vindex" - Swift to Vengeance - and our pilots lived up to that motto in wreaking vengeance on the atrocious Japanese invaders. There is no doubt that the use of Hurribombers in the Burma campaign hastened the end of the war in the Far East. The XIV Army were loud in their praise of what they considered to be an effective "artillery arm" which could hit the enemy at long range or within yards of the British front line. One occasion was when the squadron was briefed to destroy the Yanan bridge over the Chindwin river, an important link for the retreating Japanese. The worst effect of this was on the Burmese civilian population of the village of Tamu which the Japanese...

Continued next page

destroyed in entirety after raping and pillaging. We saw many other instances of these atrocities as we progressed through Burma on the "road to Mandalay".

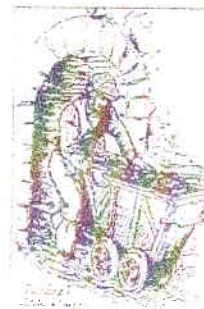
We crossed the Chindwin river in the wake of the army at Kalewa. The Royal Engineers had constructed a "Bailey Bridge" for the crossing, the bridge between Kalewa and Kalemmyo having been destroyed by our Hurribombers! The airfield at Yazagyo had been destroyed by retreating Japanese forces but with speedy repairs, helped by local people who received us as saviours and friends, we soon became operational. Moving on to Onbauk (an airfield hastily evacuated by the Japs and so intact and not even booby trapped) we were a few miles from the Irrawaddy river and only 12 miles from Mandalay on the opposite bank and still occupied by the Japanese. Here my "active service" finished and I was posted back to Base Headquarters, Calcutta, for a special assignment.

My regret was not to see that wonderful city of Mandalay which the army captured about a week later. As those of us who were being flown out boarded the "Dakota" transport plane we told the pilot of our regret not to see Mandalay - so he flew us over and around it. Rudyard Kipling wrote, "... the temple bells they say, Come you back you British soldier, come you back to Mandalay." I should love to go back but, alas, I must be content with my memories of that beautiful city seen from about 500 feet up! The tragedy of present day Burma is that the population is now suffering under a vicious military regime. They suffered so much under the Japanese occupation, were so relieved to be freed from oppression by the British and American forces, only to be plunged again into misery and by their own people!

CYRIL PURVER, KELD

VISIT

Swaledale Folk Museum.
The Green - Reeth



Open every day 10.30am to 5pm
Easter until October 31st.
01748 - 884373



The Buck Hotel

DELICIOUS
TRADITIONAL
SUNDAY LUNCH

The Buck Hotel, Reeth
Swaledale, North Yorkshire.

DL11 6SW

Tel. 01748 884210

R/C

The Lady Who Ran (for St. Teresa's)

I'm back and I did it!! This is a quick note to try and catch the Gazette's deadline. Last Sunday, 22nd April, I ran in the London Marathon to raise funds for St. Teresa's Hospice in Darlington.

My official time for the race was 4 hours 20 minutes, but it took me 9 minutes to get across the start line, so my actual running time was 4 hours 11 minutes, a little bit faster than I had anticipated.

It was a wonderful experience; I can honestly say that I enjoyed it enormously on the day, and I have suffered no after-effects. Thank you to everyone for your good wishes and a special thank you to those people who have already made a donation to St. Teresa's. Your support helped me enormously whilst I was running.

If you haven't made a donation yet, and would like to, it still isn't too late, we aren't closing the charity account (Darlington & District Hospice Movement) for a couple of weeks yet.

In next month's "Gazette" I will tell you about the day and give you the details of our fund-raising.

Ros Camsey, Bracken House, High Row, Reeth. Tel: 884369

e-mail: accordman@lineone.net

(PMB -Congratulations and well done Ros. You are a STAR.)



The Buck Hotel

Reeth, Swaledale

Continuing our
Speciality Themed Dinners,
please note the
following dates:

4th/5th May – Mexican

11th/12th May – Italian

18th/19th May – Greek

25th/26th May – Steak

1st/2nd June – Fish

For your reservation
please call 884210

Also 5th May Quoits League
Race Night for a great night out. KCC

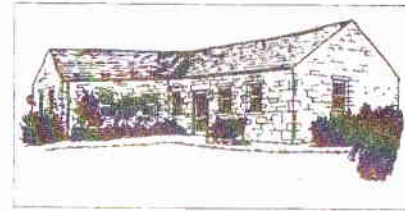
ROBERT STONES BOBCAT & MINI EXCAVATOR HIRE

WITH OR WITHOUT
OPERATOR



ALSO: 4 WD TRACTOR &
10 TON TRAILER

Fepper Hall, Arkengarthdale
Richmond North Yorkshire DL11 6EH
01748 884360 or 884718
Mobile 0421 605700



It's a Doc's Life

A column with a medical slant

Oh, dear, foot-in-mouth syndrome is still rampant at the surgery. Who is it this month? It is the vets. I have upset them by suggesting that we shoot children to control measles and that this is an adequate analogy for how the Government are treating foot and mouth. Moreover, of course, they are quite right, it is absolutely outrageous and ridiculous that anyone should suggest shooting children. Shooting is far too good for the pesky little devils.

At least I didn't advocate an approach that was contained in an article brought to my attention by my daughter.

Dr. Jonathan Swift, writing in 1729, suggested that society allowed parents to fatten up their one-year-old children and then kill them and eat them in taverns and restaurants. He also suggested that they could be served at holidays and christenings. He saw this as a solution to poverty and the overproduction of children by the lower classes that then turned to thievery and a life of crime.

Perhaps I should give up writing rubbish articles for the Gazette and offending people and do something that I am really good at. (*Sadly, top of the*

list of things I am good at is writing rubbish articles and offending people). However, I was heartened by an article in the Daily Mail on 6th April by Jonathan Dimbleby, television presenter and Chairman of the Soil Association. He was advocating a vaccination policy. Some of his arguments were very cogent. I don't think the public really understands why we cannot vaccinate. To this end, I encouraged the vets to write their own article putting the record straight and making it clear why I should stick to medicine. I do feel vindicated however by the fact the Government is now considering a vaccination policy to control FMD in certain areas.

It was Wittgenstein who said '*of what we cannot speak thereof should we be silent*', therefore, enough from me about foot and mouth.

I think the message I would like to get across this month is: do not believe everything you read in print. Just because you cannot see me with my tongue in my cheek as I write this doesn't mean that you have to take everything literally (*a juicy double negative there*). Even Jonathan Swift was not serious about eating children; his article was a satire designed to make everyone aware of the poverty that surrounded them.

To prove my point that you should not believe everything you read in print I promise that next month I will prove beyond the shadow of a doubt and to everyone's satisfaction that black is white. This will, of course, offend the Afro-Caribbean community. Oh, and probably penguins too.

Dr. Paul Bond, The Surgery.

ALL DEADLINES FOR THE JUNE ISSUE 21st MAY, SOONER IF POSSIBLE

At this special time please support the Advertisers in your Community Magazine

Please support the advertisers in your local community magazine

STEPHEN STUBBS ELECTRICAL CONTRACTOR

Would like to announce to all customers that he and Michael will now be working alongside David and James of K H Electrics under the new trading name of

'STUBBS ELECTRICAL LTD'

We all look forward to meeting any future domestic and commercial requirements you may have by continuing the quality, friendly service that has been the trademark of both businesses.

Please note our new office address, telephone and fax numbers

STUBBS ELECTRICAL LTD.
FAIRVIEW
HUDSWELL. DL11 6BW
TELEPHONE - 01748 822907
FAX - 01748 822345

r/c



Olga Ashton



Complementary Therapist
 ITEC, IHHT, IHBC, Dip. AOSM, MCHT
 Aromatherapy Massage
 Acupressure Massage
 Hydrotherm Massage & Reflexology
 Appointments please ring
01748 826022

R/C

STEVE MORGAN

Electrical Contractor of Grinton

All forms of Domestic
 work undertaken.
 Inspections & Testing

FREE ESTIMATES

Tel 01748 - 884163

02/01

WENSLEYDALE TREE & HORTICULTURAL SERVICES

All tree, forestry and horticultural work undertaken
 (INSURED)

DAVID ALLEN, (HND Arboriculture)

"West Park", West End, GAYLE,
 Hawes, North Yorkshire. DL8 3RT

Tel. 01969 667364 or e-mail : david@allen3069.freeseve.co.uk

R/C



Did Holy feet Tread Here?

Continued from page 16...

In 1754 a Bristol merchant bought the house and remodelled it, giving it a fashionable classical facade. His son gambled away the estate.

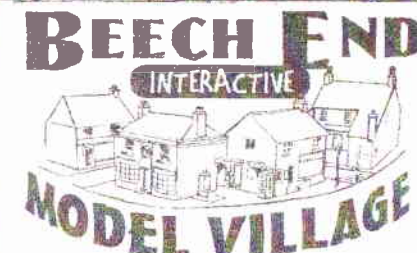
A vineyard was re-established at Pilton Manor in 1966, and expanded after the present owners bought the house 14 years ago. Nearly all the vines were taken out three years ago, sacrificed, say the owners, Jim and Anne Dowling, to excessive red tape and tax. Now they are selling the house for £1.5m.

One acre of Pinot Noir vines survives. Wine was stored in the mediaeval cellar rooms, one of which might convert into further office space.

There is a point at which our Somerset legend merges into the Arthurian fables. When Joseph fled Judea, he is said to have brought with him two cruets containing blood collected at the base of the cross during the crucifixion, and the chalice used by Jesus at the Last Supper - the Holy Grail of Arthurian fame.

Joseph thrust his staff, cut from the same type of hawthorn that was used to make the crown of thorns, into the ground. It rooted, developed shoots and grew into a tree which flowered at Christmas and Easter. Today a tree grown from this cutting flourishes in St. John's churchyard, Glastonbury, from which flowering sprigs are sent to the Queen each Christmas. It is blossoming now as it does every Easter.

Christine Webb,
 Sunday Times 15th April 2001



Commercial Square
Leyburn

Indoor fun for everyone !

- steer canal boats and drive vehicles around the village
- test your powers of observation with our "Can-you-find ?" quiz
- enjoy the amazing detailed scenery

Ring 01969-625400 for details

LOW FAGGERGILL COTTAGE

Cosy holiday cottage on a Dales 'working' hill farm with breathtaking views of Arkengarthdale - Sleeps Two
 Ideal base for walking, biking and touring the Dales or simply enjoying a quiet holiday

Mrs Gladys Atkinson

Low Faggergill Cottage, Arkengarthdale,
 Richmond, North Yorkshire. DL11 6RS

Tel. 01748 884550

01/02

Superb Holiday Cottage ARKENGARTHDALE

Quiet & Private location with
 excellent views

Sleeps 6 - Centrally Heated - Modernised &
 equipped to an extremely high standard.

Available all year PLUS

Low season mini - breaks.

Mrs G. Stones 01748 - 884360



Dear Sir,

I have recently read the February 2001 edition of the "Dalesman" (A Christmas present) and there are two letters arising from previous writers, about John Bainbridge—the horseman who repaired shoes. No one appeared to know his address or how he came to repair shoes. Can any reader help? I can remember John in the 1950's riding in from Marrick and stopping on Reeth Green. I also seem to remember him as a local preacher in Reeth Methodist Chapel. This reading awoke many memories of my visits to Reeth to stay with my grandmother Gertrude Budden. Maybe a few articles on well known Swaledale characters would be of interest to readers, eg. Jane Hannah, Tom Peacock, Dr Spiers, Pat Jack Alderson. I was saddened to read of the death of Laurie Rukin, as I remember hearing him sing. The Reeth Gazette certainly revives happy so happy memories and I do enjoy reading it.

*Sincerely, Margarte Carney (Mrs)
Stockton - on - Tees*

(PMB. This letter was originally published in our March issue with an incorrect signature. I apologise to Mrs Carney but cannot explain just how this happened. - Does anyone have further memories of John Bainbridge? The "Gazette" is pleased to receive for publication all items of general or particular interest. Please note that the "Gazette" operates an away from the Dales subscription service for £10 per year. We now have over 120 subscribers as far away as Hong Kong and Australia).

Dear Sir,

As long time visitors to Swaledale we thought hard and long, because of the foot and mouth outbreak, about coming for our normal Easter visit. Finally we decided to come and hopefully to have as normal a holiday as possible. We wish to say thank you to our many friends and to the people of the two dales for trying so very hard to make us welcome at this unhappy time. They gave us advice on where and where not to visit, nearly all the craft shops, museums and hotels and Inns were open, the owners and staff so very pleased to serve us. We went to the Arkleside Hotel for their Open Day in aid of the Reeth Swing bridge appeal and even won a prize in the raffle. We took bus rides to Richmond and Leyburn. To Richmond to see the castle - Found out that Lord Baden-Powell (B-P the Founder of the Scout movement) was stationed there in the early days of his army career and Leyburn for the Market and to see the country-side riding from a higher vantage point. We did our bit at Reeth Friday market as well. So sorry to have missed the Jazz weekend at the Buck Hotel held earlier in the month. Though we could not go walking as usual through the fields, open country-side and along the river edge we all had a splendid holiday visiting the many other attractions available. Lets hope others feel as we did and find out the other beautiful side of Swaledale, Arkengarthdale and area. We pray that foot and mouth doesn't come to the dale.

*Sincerely, Pat & Jake Willows
Nottingham*

HARKERS COACHES Of REETH



Planning an "Away Day" ?
then call Malcolm Terry on

01748 - 884533

Your local Coach, Minibus

& Private Hire Taxi

New Mercedes Minibus

Wheelchair accessible.

Five Vehicle Fleet

8 to 45 seaters

45, 19, 11 & 2 with 8 seats

Private Hire & Airport Transfers

"Ride with a Local"

06/01

Dovetail

For the Best selection of Original
Gifts in the Dales

*Antiques & Ethnic Crafts from
around the World*

Made to Measure
**OLD PINE & OAK
Furniture**

**Health Beds, Art Deco
Lighting, Kitchenalia,
Carpets & Kilms etc.**

Why Travel MILES
We're on your Doorstep

2 Bridge St. BEDALE

01677 426464

OPEN on SUNDAY

R/C

HILLARY HOUSE REETH

Family run Bed & Breakfast

1 Double - 1 Twin Room
Tea & Coffee making facilities
Colour TV

Tel. 01748 - 884171

C. Blodwell

R/C

Reeth Village Store

(formerly the Bottom Shop)

LOOK NEW LINES

>>>> VIDEO HIRE <<<<

READY TO COOK TAKE AWAY MEALS

Indian & Chinese varieties

also

Daily Newspapers - Alcoholic Drinks

Locally Baked Bread & Buns

Cakes, Pastries - Soft Drinks - Ice Cream

Sweets & Chocolates - Dairy Produce

Tobacco Products & Household Goods

Fresh Fruit & Vegetables

FREE LOCAL DELIVERIES

PHONE YOUR ORDER TO 01748 864552

OPENING HOURS

Monday - Friday. 7 am - 7.30 pm

Saturday. 7 am - 7 pm

Sunday. 8 am - 4 pm

Guy & Suzann are pleased to serve you

SERVICE WITH A SMILE

R/C

GUNNERSIDE HOLIDAY COTTAGE

ETB 3 Star cottage with open fire, beamed ceilings, king-sized bed, Jacuzzi and enclosed garden. 2 - double bedrooms plus large bunkroom sleeping four. Equipped to highest standards. Available weekly or short breaks. Pets welcome.

Tel. 0870 870 7733

www.dales-cottages.co.uk

R/C

Swaledale & Arkengarthdale Luncheon Clubs Association

The committee, meeting at Fremington Sunday School decided that all "clubs" in the Association will recommence meetings as from 30th April.

The original decision to suspend activities was taken because of our concerns at that time, the wish to give our full support to the farming community, and the uncertainty of how to proceed in view of the shocking news about the spread of this awful foot and mouth disease.

Sadly there has been a loss of stock to some farmers and many folk have been deeply concerned. It is to relieve some of these feelings of upset and isolation of our more senior members, that we have made this decision now in order that folk are able to gather together and to support one another. Further it will to some degree help our loyal food suppliers at this difficult trading time. Please look out for Posters and the issue of local menus at your normal pick up points.

The Association clubs and meeting dates for May are as follows: The clubs are open to all residents of the two dales age 55 years and over. Membership is free - meal price on the menus. Transport can be arranged.

Reeth (Memorial Hall) - Wed. 9th May
Low Row (Punch Bowl) - Thur. 17th May
Muker (Public Hall) - Thur. 24th May
Langthwaite (Meths Hall) Mon. 21st May

Further information please contact the

Secretary: Mike Beckwith
"Breconside", Muker, Richmond
North Yorkshire, DL11 6 QH
Tel. 01748 886307 or
e:mail -mike@beckwith5.freemove.co.uk

Swale Caretaker Services

Decorating - Gardening - Property Maintenance
Small Job Service - Property Checks - Walling
Chimney Sweeping - Window Cleaning

Is your job too small for contractors?
Feel as though your at the end of the queue?
We provide a commended and friendly solution.
Free quotes with no obligation on all jobs.

We also provide a local caretaker service
with free callouts and property checks.

For details please ring

Darren or Julie Chadwick on

01748 — 886439

e:mail - SwaleCaretakers@aol.com

JAMES PEACOCK



**FOR YOUR COAL &
SMOKELESS FUELS**

Approved coal & Fuel merchants

Speedy & reliable deliveries of

Solid fuels & Oils throughout the

Swaledale & Arkengarthdale area

Telephone : 01969 - 650465

0192

THE BURGOYNE HOTEL

On The Green, Reeth,
Richmond, North Yorkshire.

DL11 6SN

Telephone & Fax

01748 - 884292

R/C

Hawes Outreach Service - Background

The Hawes Outreach Service has been established to help the residents of Upper Wensleydale to access the services of the Jobcentre and the Benefits Agency within their communities. The Hawes Outreach Service is run jointly by the Employment Service and the Benefits Agency, it is assisted by the Upper Wensleydale Community Office who provide essential facilities and support. This service seeks to address some of the unique difficulties that rurality and the outbreak of Foot & Mouth Disease present when looking for work, seeking advice or claiming benefits.

Through the Outreach Service we offer guidance and support on Benefits, Jobsearch techniques, identifying vacancies, CV construction, Internet Jobsearch, Jobsearch resources, training, part time working, self employment and sources of help/income during unemployment or a down turn in work.

The service is available every Friday between 10.00 and noon within the Upper Wensleydale Community Office in Hawes, staff from the Jobcentre & the Benefits Agency will be present. You do not need to be claiming benefit's to access this service and it is not necessary to make a formal appointment to attend, casual callers are welcome. The Service will, initially, operate on a temporary basis and it's continuation is dependant on local people using it!

If anyone would like to have an informal chat with a Jobcentre Adviser about the service they can ring Robert Griffin at Northallerton Jobcentre on 01609 852313. Robert is responsible for co-ordinating the project.



Tan Hill Inn

Keld • nr Richmond • North Yorkshire

Britains Highest Inn 1732 ft ASL

Reeth 11 miles • Langthwaite 8 miles

Open all day • B&B en suite

Licensed to get married on the
premises

Food lunchtimes & evenings

Theakstons & Various guest ales

Alec & Margaret Baines 01833 628246

R/C

ANDY MALTON

General Building Contractor

no job too small

Plastering & Stone Slate

Roofing Specialist

Tel : 01748 - 884621

07/01

C. J. BEESTON

Chartered Accountant

Personal Taxation

Accounts - Payroll - VAT

The Laurels, Reeth.

Tel. & Fax : 01748 - 884535

ARKLESIDE HOTEL

REETH

Dorothy & Richard

Welcome Non - residents
for Dinner and
any Private Functions
Tel. 01748 884200 RD

**CONSERVATION AREA
APPRAISAL FOR MUKER**

Due to a number of factual inaccuracies
in the report the Parish Council has
requested the designation be deferred.

**The
Copper Kettle
Teashop**

& Licenced Restaurant
Reeth
01748 884748

One of the finest Teashops in Swaledale

**LEYBURN LAUNDRETTE
& LINEN HIRE**

Tel. 01969 622685

Domestic / Commercial Laundry
Self Service / Service Laundrette
Collection & Delivery

AQUATEX CLEANING

Kinder to clothes
Brighter Colours - Fresher Smell
Agency at : The Gift Shop
REETH

R/C

G. E. BROWN & SON
Building
Contractors
**UPVC Doors
Windows &
Conservatories**
The Old Mill Low Row
Richmond DL11 6NH
Telephone
01748 886356 RJC

Cuckoo Hill View

ICE CREAM PARLOUR
Situating overlooking Reeth Green
Choose from 16 flavours of delicious
Brymor Real Dairy Ice Cream, served
in a glass, or a variety of comets
Treat yourself to a
mouth watering Sundae
Tea & Coffee
01748 884929

UNA BERRY SP. CRe. Dip. Arom. MISPA

Aromatherapy
Remedial
Massage
Reiki
Interferential
Therapy
Swiss Reflex
Indian Head
Massage
Tel: 01748 884644

MARKET PLACE**SERVICES**

75p per 20 words
£1.50 per 40 words

FOR SALE

- **Cakes, Birthday cakes, all kinds of**
cakes apple pies and scones made to
order Phone Gladys Atkinson on
01748 884550 12/01P
- **Simon Andrew - Cabinet Maker**
Bespoke Furniture in the wood of your
choice. Also furniture restoration and
re-polishing Tel. 01748 826706 12/01P
- **PLANS DRAWN** and specifications
prepared for all types of building
projects. **ADD VALUE** to your
property! Contact **PAUL HODGSON**,
Tel. 01748 886568 02/01P
- **Cakes for All Occasions -**
Decorated to your design or ours,
wedding cakes our speciality. Tel.
01748 886239 days 886355 evenings.
- **Self Catering Hostel-**
Accommodation at the Keld Centre
Tel. 01748 886559 for details.
- **Swaledale Caterers -** (Alison Calvert
& Lisa Porter) - Fresh Tasty Home made
food for any occasion. Details:
Tel. 886335 or 886434 10/01P
- **Traditional Signwriter & Signmaker -**
Rodney Teasdale 01748 886357 11/01P
- **Reports : Manuscripts : Letters, Need**
any Word Processing completing ?
I can do all your work, whatever type or
layout you require. Please ring Joan on
01748 - 886487
- **Graham Staveley** for all your Dry
Stone walling, Grant Work and Garden
Walls etc. Tel. 01748 884753
- **Little Angels - Private Day Care**
Has a vacancy for one 2½ - 5 years old
on Thursdays. Tel. 01748 884542

Adverts in these columns may be forwarded
direct to Mike Beckwith, Muker. E:mail if
required, or left with payment at Reeth Post
Office. Thank you.

- I have a large collection of **minerals** on
display for sale and mail order. 08/01P
Contact M. Johnson Tel. 01748 - 886376
- Double Divan, 4 drawers underneath,
mattress included: £30. Tel. 01582 763277

WANTED

- **NEEDED -** Regular well known visitor
now wishing to move permanently seeks
Property to rent on a long term let in
Arkengarthdale, pref. Langthwaite,
please Tel. 01754 872798
- Wanted all types of furniture, fittings,
appliances, storage heaters, etc to suit
traditional dales cottage. phone - 884675

HOLIDAY LETS

Holiday Apartment - To let in Reeth. Available
all year, sleeps 3 - 4 and a baby in a cot. For
details Tel. 01748 884535 or visit
www.reeth.freeserve.co.uk 12/01

Holiday cottage in Low Row nr Reeth, 18thC
stone cottage set on hillside with south facing
garden and spectacular views. Open fire. Sleeps
4. Newly refurbished with central heating, new
kitchen with dishwasher. Short Breaks. Tel.
Margaret Lewis 01748 884420 04/01

Cornwall - Cliff-top Edwardian apartment on
The Lizard with wonderful sea views. Set in
private grounds with tennis court- 5 mins. walk
to beach. Sleeps 6. Newly refurbished and well
equipped. Lovely mild climate.
Tel. Margaret Lewis 01748 884420 04/01

Interested in Motor Racing??

Watch all meetings including practices at
CROFT for FREE. Must have own transport.
Please ring Alan 886010

ADVERTS ?- RING MIKE 01748 -886307 or
e:mail mike@beckwith5.freeserve.co.uk

THE C.B. INN



ARKENGARTHDALE

- Eighteen individually decorated En-suite bedrooms - superb views
- Private Lounge, separate sitting room.
- Function Room available for Private parties, Meetings & Receptions.

A Warm friendly atmosphere,
fine fresh food in a
traditional Inn environment.

Fully inclusive breaks available all year
Bookings, details or a brochure call
01748 884 567 R/C

RICHARD SMITH Book-keeping

Also treasure for Arkengarthdale Sports
Association, Friends of Arkengarthdale
School & Swaledale Darts League

Tel. 01748 884655

DALESWAY DRIVING SCHOOL

Get a top grade instructor, with
a top notch pass rate,
at a competitive price

01969 - 623299

Patient, friendly tuition from
Christine Whitehead R/C

REETH POST OFFICE & BOOKSHOP

FOR ALL YOUR
STATIONERY
REQUIREMENTS

FAXING
PHOTOCOPYING
LAMINATING

BOOK
SELECTION
LOCAL INTEREST
CHILDREN'S & ADULT
FICTION MAPS &
GUIDES SECOND HAND
BOOKS BOUGHT
& SOLD
ORDERS TAKEN

The Post Office
Opening Hours
Monday - Saturday
9 am to 5.30 pm

There will be no Sunday
opening for the Post Office.

Books, Greeting Cards,
& Stationery can be bought
through the
Corner Shop on Sundays

**MORE THAN JUST A
POST OFFICE** R/C

Pinck's Stroll cont....

From page 8....

Buoyed up with all these wonders you eventually arrive at what looks like at first sight an unassuming barn, in the middle of a field with perhaps a dozen gravestones. This is Lunds Church, of no dedication, built in the mid-18th century. In more recent years, though, it had been cared for by a retired business man named McFee, who had been "in sugar", or, in plain English, he used to work for Messrs Tate & Lyle. He is buried in the churchyard here, and a friend of mine said to me: "What a suitable epitaph on his tombstone" The one from a Golden Syrup tin!" So if you glance at this tin you will see the picture of a dead lion surrounded by a swarm of bees, belonging to a hive they have made inside the dead lion's carcase,

with the caption: "Out of the strong came forth sweetness". But was this McFee's epitaph? No, it jolly well wasn't, and my friend was pulling my leg, the unprincipled so-and-so.

It was my good fortune to have seen the interior of this church in its more-or-less original condition, with a complete set of beautiful hand-made pews, each with a couple of newels or knobs, which you could grasp in lowering yourself into your seat or hold on to gratefully in rising from it. There was also a lectern or desk for reading the Lesson, and a small organ or harmonium, with a decent sized and fairly ancient hymn book, containing the tunes of "Hymns A. & M." All was there, except the congregation.....

Major F T C Williams

The " Gazette operates a subscriber service for folk away from the dales

Complete
Cut out &
Send to :-

Mike
Beckwith
Breconside
MUKER
Richmond
N. Yorkshire
DL11 6QH

Other Queries
Please Tel.
01748 886307

Friends of Reeth & District Gazette - Annual Subscription Application :-

Name :-

Address :-

.....Post Code :.....

Please enrol me/us as a Friend (s) of the Reeth & District Gazette, and send me/us 12 monthly issues and any special news bulletins. I enclose my/our subscription of £ 10.00. Cheques made payable to "Reeth & District Gazette" please.

Signed :-..... Date:-.....

Tel. No. :-.....e: mail :-.....

THANKS

Bob Rutter would like to thank all my friends for arranging the recent surprise party on my birthday. It was a very happy get-together and I enjoyed both the food and the company very much. Many thanks also for the cards and presents. Thank you all.

CONFIDENTIAL HELPLINES

Please note the following telephone numbers are available to anyone feeling pressure, isolation or just for someone to talk to at this most difficult time :-

LOCAL

Rev. Tim Tunley - 01748 884706
Rev. Andrew Bell - 01748 884336
Rev. Gillian Bobbett - 01748 886559
Deacon John Little - 01748 884759

NATIONAL**Advice & Guidance**

Rural Stress Information Network
Tel. 024 7641 2916
(weekdays 8.30am to 4.30pm)

Financial Assistance

Royal Agricultural
Benevolent Institution
Tel. 01865 727 888
(weekdays 9am to 4.30pm)

Practical Support for Farmers

Farm Crisis Network
Tel. 07002 326 326
(daily 7pm to 10pm)

Emotional Help & Support

The Samaritans
Tel. 08457 90 90 90 (24 hours)

"GAZETTE" DEADLINE JUNE ISSUE
MONDAY MAY 21st PLEASE

Thank you for supporting your local Farming Community

DORANT 4x4 • DORANT 4x4

DORANT LTD
CAR AGENTS

"The widest choice of 4x4s in the North-East ... probably"

4x4s

01Y DEFENDER 90 TD5. Hard Top. HRW, RWW, tow bar, Caledonian Blue..... £15,395 + VAT

98S FREELANDER 2.0 EXDi 5-dr Station Wagon. Air con., 16" alloys, hill descent, FSH, 48,000 miles, Epsom Green Met..... £14,795

98S FREELANDER 2.0 XEdi 3-dr. Hardback. Air con. hill descent, FSH, 40,000 miles, Cobar Blue..... £13,495

97P TOYOTA LANDCRUISER COLORADO 3.0GS TD 3-dr, 35,000 mile, Black..... £11,995

96P RANGE ROVER 4.6 HSE Auto. Walnut trim, air con, cruise control, alloys, leather, FSH, 55,000 miles, in Rioja Red..... £19,995

96P DISCOVERY 2.5 TDi 5 5-dr 7-seats. Alloys, elec. pack, 1 owner, FSH, 79,000, Epsom Green..... £11,495

96P SUZUKI VITARA JX 1.6 SPORT 3-dr. FSH, 38,000 miles, Purple..... £5995

96N SUZUKI VITARA 2.0 TD 5-dr Auto. FSH, 57,000 miles, Rioja Red Met/ Gold Met..... £7495

95N SHOGUN 3.0 V6 SWB GLS. Sunroof, alloys, side steps, FSH, 37,000 miles, Blue..... £9495

95M DISCOVERY 2.5 TDi 5-dr (300 Series). Freestyle alloys, 7 seats, 81,000 miles, Biarritz Blue Met..... £9995

95M RANGE ROVER CLASSIC SE TDi Auto. Leather, air con, CD, elec seats, FSH, 62,000 miles, Avalon..... £10,995

94M DAIHATSU FOURTRAK FIELDMAN TDL. 86,000 miles, Grey..... £5995 + VAT

94L DISCOVERY 2.5 TDi ES 5-dr 7-seats. Leather, air con, CD, twin roofs, FLR SH, 1 owner, Blue..... £9995

93K FRONTERA 2.0i SPORT 3-dr. FSH, 68,000 miles, Black Metallic..... £5395

89F DEFENDER 90 TD Hard Top. 99,000 miles, Blue..... £3595

89F LAND ROVER 90 TD COUNTY STATION WAGON. 74,000 miles, White..... £5495

CARS

00V ROVER 25 1.6i L 5-dr. 9,000 miles, British Racing Green..... £8495

98S VW POLO 1.4 16v 3-dr. Alloys, FSH, 22,000 miles, Dark Green Metallic..... £7995

97P VOLVO V40 1.9 TD Estate. FSH, 67,000 miles, Red..... £7495

NEW & USED CARS SUPPLIED TO ORDER

NEWGATE GARAGE, BARNARD CASTLE
Tel: (01833) 630620
Mon-Fri 8 am-6 pm, Sat 8 am-5 pm
Sun 10 am-4 pm

DORANT 4x4 • DORANT 4x4

MUSIC IN THE DALES

The Swaledale Festival starts on May 25th with a concert in Grinton Church, and continues for a fortnight, ending, again at Grinton, with the Northern Sinfonia. At their meeting on April 11th the Board made various cuts to the programme due to the outbreak of foot and mouth disease, but it was thought important to put on a Festival, keep the flag flying and encourage visitors to safe events in the Two Dales. Full details will be available shortly in the local press and the Tourist Information Centres in Reeth, Leyburn and Richmond will have full information on all the changes. Several events have been moved to Grinton Church. There will be a free Shuttle Service from, and return to Reeth Green as parking is so restricted at Grinton itself. There are plans afoot to have a mini - festival in the Autumn for some of the events that have been cancelled, so watch out for these announcements. Thank you once again for your support and patience with the uncertainty over the Festival. We do hope that the Festival will be memorable, not only for the changes forced on us by the tragic foot and mouth epidemic, but as a good musical event, the first Festival of the new Director, Philip Parr. Philip has coped magnificently with problems that certainly were not envisaged on his appointment.

Elisabeth Sutherland - Chairman

SWEEPIN' THE DALES



Take the worry and mess out of having your chimney swept. Call **Martin Tradewell**, the local expert and take advantage of the following:-

- City & Guilds (7641) certificate in Chimney Cleaning (the only one in the area) • **Fully insured** • Clean, safe & thorough • **Minimum disruption** to your daily routine • **Certificate of Cleaning issued** (highlighting any dangers, hazards or problems) • **'Next Visit Due'** reminder service

Martin Tradewell
Telephone **01765 688299**

COME AND SEE

Stef's
famous models

FREE ENTRY TO OUR WORKSHOP

Located in the village of Reeth, you are very welcome to come and visit Stef's.

We design and produce a wonderful selection of reasonably priced countryside theme wall plaques and animal models including a good variety of the local breeds of Swaledale & Wensleydale Sheep and Border Collie dogs.

An ideal gift or a fitting souvenir of your visit to the magnificent Dales.

OPENING TIMES

Monday - Friday 9 am - 4 pm
(watch the production, see finished models)
Saturdays : 10 am - 4 pm
(shop sales only)
Sundays & Bank Holidays 11 am - 4 pm
(shop open)

A mail order service is also available and information on your nearest 'Stef's' retailer will be provided on request.

Tel. 01748 - 884498 Fax. 01748 884334



Members of the Two Dales Partnership have been working hard during the last month to prepare and submit their application for a dedicated Community Development Worker. If all goes well and the signs are promising, this person could be appointed by September. Their job will be to seek out and help formulate and submit, projects from the Two Dales, for European funding. These projects will be **your** projects and from now until the post is filled would be a good time for organisations and groups to be thinking about the kinds of help they need.

Examples of the kind of projects that might come forward are:-

1. A group of local businesses wanting to set up a joint Internet sales website.
2. A voluntary group wishing to train more volunteers and so provide a better service to the community.
3. A group of young people wishing to set up a new business, perhaps based on environmental improvements.

There are many ideas that could qualify for help. The projects will have to meet certain criteria and the key words to remember are Regeneration and most importantly Sustainability. These must be projects that not only improve a current problem but also secure permanent opportunities for the future, that are sustainable. Ideas are the key, so talk within your organisations and remember that the Community Investment Prospectus is there to be your platform and assist your thinking. The 2DP website now carries information on the Prospectus, the Local Development and Employment Pact for Grinton and Upper Swaledale and also Guidance notes to help you make contact with people who can help

The address is <http://members.aol.com/swaledalecip>

The 2DP still intends to host an Open-House day later in the year when you will be able to chat informally to members and representatives of support groups, about your ideas. Meanwhile, get to know the CIP on the web or feel free to contact any member of the Partnership for help at any time.

David Trusson, Marrick 01748 884474
Val Stark, Gunnerside 01748 886220
Gavin Graveson, Low Row 01748 886470
Jane Davies, Reeth 01748 884188/ 884648

GUNNERSIDE W.I.

There was a good attendance when our meetings resumed after an interval of two months, and we were pleased to welcome a visitor, Mags Bridel. The business meeting was a short one, due to the cancellation of many W.I. events. Plans were discussed for our annual day trip in June to Skipton along with Muker Ladies Guild, and for an evening at Ravensworth Nurseries. Our president, Margaret Rutter, suggested that an annual bursary should be set up to be used for any educational purpose relating to W.I., and it was decided to discuss this further at the AGM.

Our speaker, Maureen Clayton, gave us an interesting insight into her work as a counsellor and spiritual healer. Leaving school at the age of fourteen, Maureen did not return to studying until after she had had a family and took a degree in psychology. She then became involved in counselling, but it was not until she became ill with ME, that circumstances led her to a spiritual healer. She then took courses in spiritual healing which she practises along with counselling, the purpose being to bring peace of mind so that the body heals itself. The president thanked Maureen for her thought-provoking talk.

The next meeting will be on 17th May.

DEADLINES FOR JUNE ISSUE
MONDAY 21st MAY

Please send or e:mail direct to publisher - see address page 38

The Garden House

Anvil Square
Reeth Richmond
North Yorkshire
DL11 6TE
01748 884188



Tucked in the corner of Anvil Square, next to the footpath to the river, you will find The Garden House.

As well as the work of Garden House Pottery, including their new range of table and kitchen-ware, you will find work by other local hand-workers, skilled in patchwork and creative hand-knitting.

The 2001 production of Damson Cheese will be available in the shop from the end of May. As supplies are always limited, please order early if you are thinking of buying later in the year. We now offer a mail-order service.

Our opening times this year are :-
10.00 a.m. Till 5.30 p.m.

on

Friday, Saturday, Sunday, & Monday

We will be closed on Wednesdays.
Opening on Tuesdays and Thursdays will be limited to school holiday periods only.

05/010

REETH & DISTRICT GAZETTE

No material may be reproduced in whole or in part without permission. Whilst every care is taken, the publishers cannot be held legally responsible for any errors or opinions in Articles, Listings or Advertisements.

Printed and Published by the
Reeth & District Gazette.

c/o P. Mike Beckwith
Breconside, Muker, Richmond,
North Yorkshire. DL11 6QH

Tel. 01748 886307 or

e:mail:mike@beckwith5.freemove.co.uk

"Gazette" - ADVERTISING

To ensure prompt attention for new adverts, setting up, changes to current advert runs, advert rates and account enquiries, please contact:-

Mike Beckwith at above address. Articles and adverts are better sent but please telephone with details if necessary. Art work and setting up of adverts undertaken. The "Gazette" can print your advert in certain colours as a spot advert or as a stand alone with coloured border on a page at a small extra fee. Please allow time for preparation prior to closing date. We can also print your flyers and hand outs in colour up to A4 size.

**Deadline for JUNE ISSUE
NOON MONDAY 21st MAY**

Articles and items for inclusion are better sent e:mail or on floppy disc (Publisher or Word Program).

Direct to publisher see above. Please send as early in the month as possible or they may be left at Reeth PO.

e:mail:mike@beckwith5.freemove.co.uk

**ELITE CINEMA
LEYBURN**

**MAY FILMS**

Thurs - Sat May 3rd - 5th
at 5 pm & 8 pm
'HANNIBAL' (18)

Thurs May 10th
at 4.30 pm & 8 pm
'GLADIATOR' (15)

Fri & Sat May 11th & 12th
at 5 pm & 8 pm
'MISS CONGENIALITY' (12)

Thurs - Sat May 17th - 19th
at 5 pm & 8 pm
'CROUCHING TIGER, HIDDEN
DRAGON' (12)
(Subtitles)

Thurs May 24th
at 5 pm & 8 pm
'MALENA' (15)

Fri & Sat May 25th & 26th
at 5 pm & 8 pm
and also on
Thurs - Sat May 31st - June 2nd.
'CHOCOLAT' (12)

BOX OFFICE

01969 - 624488

Advance Bookings Available
Open Thurs - Sat 2 pm till 10 pm
<http://website.lineone.net/~elite.cinema> 07/01
PROGRAMME ALWAYS ON THIS PAGE

**REETH GARAGE Ltd.**

Arkengarthdale Road, REETH, Richmond
North Yorkshire. DL11 6QT

**FULLY REFURBISHED
M.O.T. TEST CENTRE
OPEN**

**BOOK NOW!
TELEPHONE - PETER GUY
SERVICE DEPT.**

**GOOD STOCK OF 4 X 4
TYRES FOR SAFE WINTER
MOTORING**

Why travel miles for your
Fast Fit requirements?

- New Tyres from £ 18
 - 3 Year Warranty Batteries from £ 36.50
 - Exhaust Systems from £ 40. 50
- Above prices include fitting & VAT depending on make/model of car.

UNIPART  **CAR CARE CENTRE**

For all your motoring needs
**SALES + SERVICE + SPARES
PETROL + DIESEL + MOT
FORECOURT SHOP
Monday to Saturday
8 am - 6 pm**

TEL - 01748 884243

**ESTABLISHED
OVER 60 YEARS**

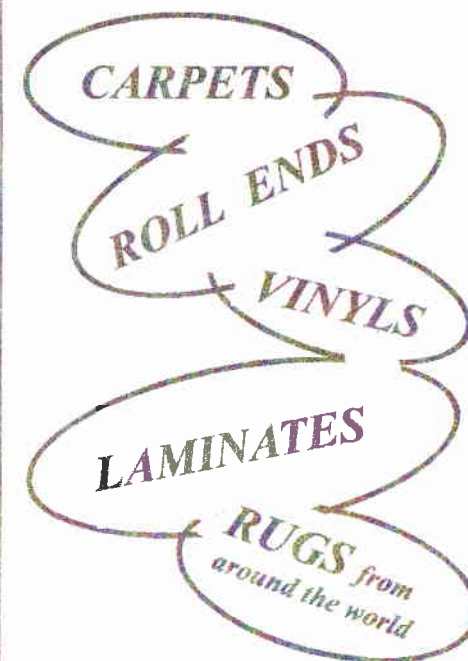
07/01

**CALVERTS CARPETS**

5 Queens Road, Richmond
01748 - 823604

"WHERE THE BEST COSTS LESS"

Why not pay us a visit at
our **NEW** Richmond
Showroom and see our
extensive range of :-



All at unbelievable prices
We offer an expert fitting service.

Free Delivery & Estimating

R/C