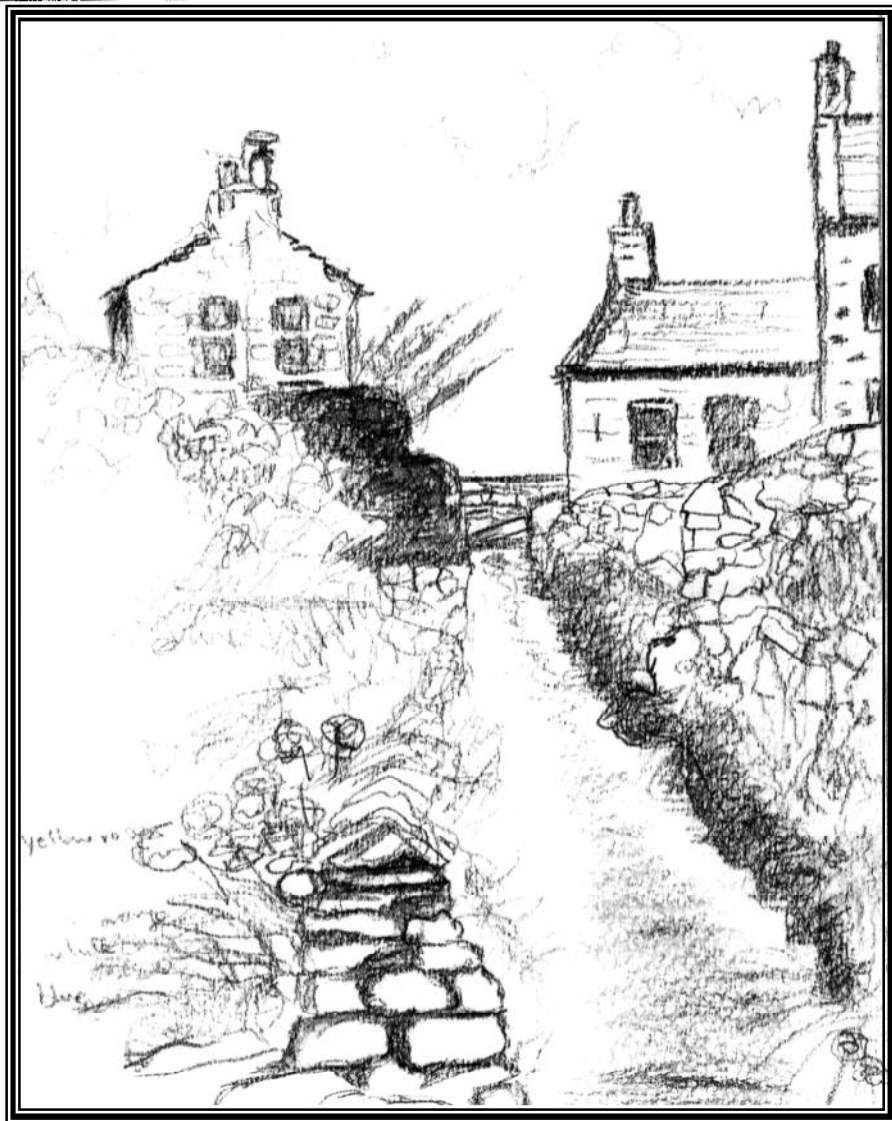


REETH & DISTRICT GAZETTE

ISSUE NO. 145

AUGUST 2007



YOUR LOCAL NEWS MAGAZINE

PRICELESS



Would it really matterif yet another of our Dale's Methodist Chapels closed ? Gunnerside for example. It really is not possible to keep the few we have left open without more support from the local communities.

At Gunnerside there is the Shortest day, Harvest festival, Easter and Midsummer where you will find more than a handful of people and the occasional visitors at a Sunday Service. The regular giving is also now so small it will not be possible to pay the bills for long.

It would be lovely to see lots of activity in the Chapel in addition to the male Voice Choir from York every other year, the odd concert for the Swaledale Festival, the Gunnerside Choir, and occasionally the Swale Singers and Muker Band. Even the Methodist Primary School may be using it less in future.

Fewer people get married in Church now, and when they do they never return. Of course we still do have funerals. Where would you like to be buried? Maybe scatter your ashes on the Swale or on the Barf or down the lead mines?

If Gunnerside Chapel is forced to close there would only be Arkengarthdale and Reeth left for Methodists—twelve miles from Keld and nine from Muker.

Apart from the financial implication, if the necessary officers to run the Cahpel are not forthcoming there certainly will be more closures in the Dales. Help from the circuit beyond Reeth to act as

Secretary/Treasurer and Stewards etc. can only be a temporary measure - then the crunch will come.

If you look in the Gunnerside Visitors Book in the porch, the comments are always encouraging and so often people are thrilled to find it open when they try the door. Many of the folk around the villages have ancestors who put their faith, money and skills into building the Chapel. Do we owe them anything?

Please think about it. **Florence Bland.**

REETH & DISTRICT GAZETTE

EDITORIAL

Thank you Florence for the heartfelt letter. The problem of keeping Chapels and Churches open is not of course confined to our two beautiful Dales, but that is where our concern lies. I believe that we are just custodians for future generations of these magnificent buildings built to glorify and worship God. We therefore all have a duty and responsibility to keep them going wherever possible, as we, and our Dale would be so much the losers if they were not there as part of our community. They are now as much a part of our landscape as the sheep and hills. They also form part of our historical and social heritage, as well as being the spiritual centres of our Dale. We do need to think about what we can do to preserve them, not just as stones and mortar, but as a living and active part of our community. What do others think ? Let us know.

GML

REETH AND DISTRICT GAZETTE

GAZETTE MANAGEMENT TEAM

Chairman :

MALCOLM GARDNER

Forge House, Healaugh, Richmond DL11 6LD

Tel/Fax : 01748 884113

Email : sales@conveyorconsultancy.co.uk

Secretary : **Sue Alderson**

Holme View, Low Row, Richmond, DL11 6PE .

Tel : 01748 886292

Email : susana@swaledale.org

Treasurer : **David Trusson**

The Lodge, Marrick, Richmond, DL11 7LQ

Tel. : 01748 884474

Email : rdgacc@aol.com

Production Manager : **James Alderson**

Greenways, Grinton, Richmond, DL11 6HJ

Tel. : 01748 884312

Email :

jamesaldersonongreenways@hotmail.com

Distribution : **Wendy Gardner**

Forge House, Healaugh, Richmond, DL11 6LD

Tel. : 01748 884113

Subscription Secretary : **Alex Hewlett**,

The Vicarage, Reeth, Richmond, DL11

Tel. : 01748 884706

EDITOR : **George Lundberg**

Gallows Top, Low Row, Richmond, DL11 6PP

Tel. : 01748 886111/886505

Tel/Fax : 01748 886111

Email : GML1@gallowstop.fsnet.co.uk

REETH & DISTRICT GAZETTE

No material may be reproduced in whole or in part without permission. Whilst every care is taken, the publishers cannot be held legally responsible for any errors or opinions in Articles, Listings or Advertisements.

Printed and Published by the

Reeth & District Gazette.

c/o THE EDITOR

George M. Lundberg

Gallows Top

Low Row

Richmond

North Yorkshire. DL11 6PP

Tel/Fax : 01748 886111 or Tel. 886505

Email: GML1@gallowstop.fsnet.co.uk

"Gazette" - ADVERTISING

To ensure prompt attention for new adverts, setting up, changes to current advert runs, advert rates and account enquiries, please contact: **The EDITOR at above address.**

All articles can be left at :

REETH POST OFFICE

GAZETTE DEADLINES

In order that we can distribute the Gazette on the first of each month, it is necessary to have a Deadline date. The Deadline Dates for the next few months are as follows :.

September August 15th

October September 15th

November October 15th

PLEASE NOTE

We cannot guarantee any entry not submitted by the deadline.

LARGE PRINT

COPIES OF THE GAZETTE

We can now offer large print copies of the Gazette. These are issued free of charge, but are printed on special request only. Please inform the editor should you require this service.

A years subscription to the Reeth and District gazette makes an excellent present. To subscribe please contact our subscription secretary.

**FRONT COVER PICTURE :
BACK LANE, REETH by
Stephanie Crellar**

CHURCH SERVICES in Swaledale & Arkengarthdale

Sunday 5th. August

- 9.15 am St. Mary's Muker
Eucharist
- 10.30am URC Combined Service at
Barnard Castle
Reeth Methodist
- 11.00am St. Edmund's, Marske
Family Service
Holy Trinity, Low Row
Eucharist
Reeth Evangelical Congregational
- 6.00pm St. Andrew's, Grinton
Evensong BCP
- 6.30pm Arkengarthdale
Holy Communion
Gunnarside Methodist
Reeth Evangelical Congregational

Sunday 12th August

- 9.30am St. Andrew's, Grinton
Eucharist
St. Michael's, Downholme
Holy Communion
- 10.30am Low Row URC
Reeth Methodist
Holy Communion
- 11.00am St. Edmund's Marske
Eucharist
Reeth Evangelical Congregational
- 11.15am St. Mary's Arkengarthdale
Holy Communion BCP
- 2.00pm Keld URC
- 6.30pm Gunnarside Methodist
Reeth Evangelical Congregational

Sunday 19th. August

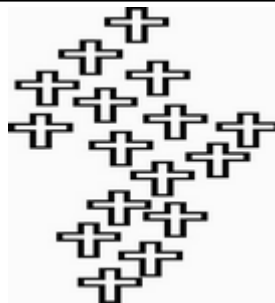
- 9.15am St. Mary's, Muker
Holy Communion BCP
- 10.30am Low URC
Holy Communion
Reeth Methodist
- 11.00am Holy Trinity, Low Row
Eucharist
St. Edmund's Marske
Eucharist
Reeth Evangelical Congregational
- 6.30pm St. Mary's Arkengarthdale
Evensong *BCP*
Arkengarthdale Methodist
Gunnarside Methodist
Reeth Evangelical Congregational

Sunday 26th. August

- 8.00am Holy Trinity, Low Row
Holy Communion BCP
- 9.30am St. Andrew's, Grinton
Eucharist
St. Michael's, Downholme
Holy Communion
- 10.30am Low Row
Reeth Methodist
- 11.00am St. Edmund's Marske
Eucharist
Reeth Evangelical Congregational
- 11.15 St. Mary's, Arkengarthdale
Eucharist
- 2.00pm Keld URC
- 6.30pm Gunnarside Methodist
Reeth Evangelical Congregational

Religious Society of Friends (Quakers)

Meet at the Friends Meeting House in
Leyburn, Bainbridge and Countersett. For
details of regular weekly services and any
further information please telephone Peter
Neale 01969 625470



Reeth Show Ltd

President: MRS K. BROWN

Chairman: S.S. BAINBRIDGE, Esq.

SCHEDULE OF PRIZES

FOR THE

95th

ANNUAL SHOW

to be held at REETH on

Wednesday, 29th August, 2007

CLASSES FOR

SHEEP: Swaledale, Blue-faced Leicester, Teeswater, Masham, Mules, Dalesbred,
Texel, Jacob and Fat Lambs.

HORSES: Pony Breeding and Riding, Fell, Dales,
Shetland and Welsh Ponies, Coloured Classes,
Mounted Fancy Dress

Open Driving Competition. Pets Class.

Young Farmers' Classes, Poultry, Children's Classes, Horticulture,
Produce, Preserves, Home-made Wine, Bread and Cakes,
Handicrafts, Paintings, Photography, Walking Sticks,
Miscellany/Group/Individual Classes, Handwriting.

ADMISSION: £5 Children U14 £1

ATTRACTIONS:

REETH YOUNG FARMERS' CLUB

TENNANTS CUP FOR BEST TRADE STAND

DRY STONE WALLING COMPETITION OPEN FELL RACE

**OPEN QUOITS VINTAGE TRACTORS REETH BAND SHEEPDOG TRIAL
SHOW NIGHT DANCE**

Secretary: Mrs. B. Harker,

Stubbin Farm, Harkerside, Grinton, Richmond, North Yorkshire. DL11 6JD.

Telephone: Richmond (01748) 884247.

Chairman: S.S. Bainbridge, Esq., Telephone: (01748) 884089

Bio Security & Safety Officer: T.B. Sunter, Esq.

— www.reethshow.co.uk —

ENTRIES CLOSE MONDAY, 13th AUGUST 2007

Dovetail Interiors

The one shop you must
visit in the Dales

See our New Solid Oak Bedroom Range

Designer Jewellery, Lighting, Mirrors, Gifts
Fireplaces, Garden Artifacts & Teak Furniture
Made to Measure High Quality Oak, Hardwood
Painted & Reclaimed Pine Furniture etc
Why travel miles we are on your doorstep

2 Bridge St, BEDALE Tel 01677 426464 Dales Delivery Service
web www.dovetailinteriors.com 5% discount with this ad

THE BURGOYNE HOTEL

We are seeking reliable staff to join our team and to work in the housekeeping and dining room departments of our busy upmarket Hotel. Would involve some evenings and weekend work. Excellent rates of pay and conditions. For further details please call 01748 884292

ANDY MALTON LTD

General Building Contractor
Plastering / Roofing / Dry lining/
Ceiling Work / Pointing / Guttering
MOST BUILDING REPAIR WORK
CARRIED OUT
(Estimates Free)
NO JOB TOO SMALL
Tel : 01748 - 884621
Email : amalton56@fsmail.net

REETH GARAGE LTD.

ARKENGARHTHDALE ROAD, REETH, RICHMOND,
NORTH YORKSHIRE, DL11 6QT

WINTER JACKET SALE

Save up to 20%
WOMEN'S ISLANDER AND MEN'S HUNTER
PEACHED MICROFIBRE
FULLY WATER AND WINDPROOF
TOP QUALITY AND LOW PRICE

WELLY OFFER
HOGS BRAEMAR JUST LIKE HUNTER
BUT HALF THE PRICE
GREEN OR BLUE

NEW STOCK MUCKBOOT TACK
IDEAL EQUESTRIAN OR LEISURE
LIGHTWEIGHT DURABLE INSULATED
4 GREAT COLOURS


Purple Dusky Pink
Powder Blue Black

BORDER from £12.99
DUNLOP PUROFORT, NORA DOLOMITE

ALL IN STOCK

TEL. 01748 - 884243

SILVER LIGHTNING



graphic design
logo design
advertising marketing
websites
brand identities
viral communications
brochures
packaging

01748 884409

*A Warm & Friendly Service Awaits
You at....*

**THE
'TOP SHOP'**

**Reeth's Hairdressing Salon
offering a high standard of
UNISEX Hairdressing**

GIFT VOUCHERS
at a price to suit you
Various prices.

Closing Times
All day Wednesday
Half Day Saturday

The 'TOP SHOP'
Arkengarthdale Road, Reeth
(Opposite Reeth Garage)

TEL. 01748 884627

The Avatar Course



Avatar® is the
answer.....

What is your question?
Live your life deliberately.

Call me, Penn Shewring
on 01748 886099

Penn.shewring@virgin.net.

Avatar® is a registered trademark of Stars
Edge Inc © All Rights Reserved

TO LET

Unfurnished flat in Muker, pleasant
sitting room, 1- 2 bedrooms, kitchen &
bathroom. £300-00 per month includes
electricity. Tel:- 01748 886251

GARDENER/HANDYMAN REQUIRED

Arkengarthdale. Part Time.
Flexible hours to suit. Good Pay
Tel. 01748 884272

WENSLEYDALE WINING & DINING

Come along and join us:
Dining Out, Going to the Theatre
Walking, Weekend Breaks,
Special Events
Tel. 01748 884503
01969 667628

**TO LET - Long or short term. 1 bedroom
traditional cottage in Langthwaite tel. 01748
884007 or 01524 811505**



IT'S GOODBYE FROM ME - AND GOODBYE FROM HIM

No, we are not moving from Reeth to run a distillery in the Western Isles - but we **are** resigning from front line work in the Orchard to do all the other things retired people do. This is my last Gazette article about the activities in the Community Orchard;

I hope that, over the years, I have given you an insight into the project's trials, tribulations and aspirations.

Now that the renovation work is completed I can say it was all worth while - but it is just as well I didn't know what it would involve beforehand! I do have happy memories of all the people who have worked in the garden, sometimes in the most dreadful conditions. I have also been lucky to be party to commissioning the skilled work that has gone into benches, sculptures, walls and flower beds. These make the Orchard a unique garden to be enjoyed for many years to come.

The Orchard Group has changed over the six years since its inception; present members are now involved mainly with maintenance work. As any gardener knows, turn your back on the garden for long and it soon gets out of hand. More help is needed with this work - which is not necessarily onerous if enough people are willing to give an hour or so a week. It would be a bonus if we could have help from a wild flower meadow enthusiast! Help is also needed with the organisation and paperwork involved with running the Orchard; preferably someone who likes computers, though is not necessarily a keen gardener. The next Orchard Group meeting will be held on Tuesday, 14th August, at the Barn, Hudson House, at 8 pm; please just come along if you are interested.

Keith and I are sorry to be taking a back seat after a long and happy association with the Orchard, its volunteers, Friends and other supporters. We hope that new people will come forward to work with the remaining Orchard Group members; it will mean a lot to us to know that the future of the Orchard is in safe hands.

Brenda Allen 884103

ILLUSTRATED TALKS IN FREMINGTON SUNDAY SCHOOL

MONDAY EVENINGS AT 8pm

Aug 6	Philip Harvey	Travels through Amberdale
	(This talk changes the previously advertised talk Magic Mushrooms)	
Aug 13	Jeremy Hutchinson	My 'Grand Design'
	(Facts/Figures and Tales of a Barn Conversion 95% on my own!)	
Aug 20	Dawn Webster	Kiplin Hall - Bringing an Historic House Back to Life
Aug 27	Val & Geoff Burdis	Highlands & Islands
Sep 3		John Drewett (BSc) Spanning the Centuries - A
	Short History of Bridges	
	£3.00 Adults	£1.00 Children (Including Coffee & Biscuits)
	Proceeds to St. Andrew's Church at Grinton in Swaledale	
	Enquiries 01748 886644/884366	

REETH AND DISTRICT GAZETTE

WENSLEYDALE RAILWAY A WHIFF OF STEAM!

Steam trains return to Wensleydale for a month in August

Steam operating dates: Aug 1-17 and Aug 21- Sept 2
Visiting steam locomotive No 80105 will haul the first train each day from Leeming Bar to Redmire and bring the last train back. During the day it will shuttle between Redmire and Leyburn, with extra passenger mileage between Leyburn and Constable Burton (no alighting or boarding there) for the loco to run round. Wensleydale Railway's DMU (diesel multiple unit) trains will provide a feeder service between Leeming Bar and Leyburn. *(Please note that on the three days 18-20 August (Sat to Mon) DMU services only will operate while the steam loco undergoes routine maintenance).* No 80105 is one of only 14 of its class to have been preserved. It was built in Brighton in 1955, rescued from a scrapyard in Wales in 1973 and restored for service at Bo'ness and Kinneil Railway in Scotland. The steam services are expected to bring publicity and thereby extra visitors to the area - and also offer local people a new 'day out' opportunity on their doorstep. Fares for any journey to and from Leeming Bar, Bedale and Finghall are unchanged, to discourage passengers from bringing their cars up the dale and there are concessions for senior citizens, children and family groups (2 + 3).
I N F O R M A T I O N :
www.wensleydalerailway.com (train times, fares and special events);

www.WensleydaleRailwayAssociation.com (history and volunteering). Tel 08454 50 54 74 Services are 'turn up and go' except for coach parties and groups of 11 or more who should book in advance. No need to book for Discovery Walk with leadmining theme from Redmire station starting at 11.40on Thurs. August 9. It is essential to book for special events which include both a train journey and meal (Sun August 5 Yorkshire Pudding Walk and lunch; Thurs August 23 evening Hog Roast and Castle Hills, Northallerton trip). (For other events and local information, tel. Leyburn TIC on 01969 623069).

The Friends of Arkengarthdale School

would like to thank every-one who joined them and donated money on their Highway man trolley push on Sunday 15th July .We started at Low Whita bridge and pushed to Reeth where we stopped for a picnic on the green and then pushed back up to Arkengarthdale , we raised a magnificent £430.00 . We all managed to stay dry and the children were amazing with most of them walking the whole distance shaking buckets and pushing our Dick Turpin. A big thank- you goes to Gail and co with the community bus for being our front vehicle and resting place for weary walkers, and to Douglas for taking up the rear in the landrover. Thank- you also to Charles & Stacey and staff at the C B for well needed Tea and a brilliant day was had by adults and children . Thank you.



DORANT



BRIDGE GARAGE

REETH 01748 884245

NEWGATE GARAGE

BARNARD CASTLE - 01833 630620

SALES • SERVICE • MOT

UPPER WENSLEYDALE &

SWALEDALE

WINDOW CLEANING

& Odd Job Services - Competitive Rates

JOINERY, PAINTING,

SASH WINDOWS RE -CORDED

MAINTENANCE & GARDEN

CONTRACTS UNDERTAKEN

City & Guilds in Carpentry & Joinery.

Tel.01969 667873

WINTER DISCOUNTS APPLY



GHYLLFOOT

TEAROOM

AND

PENNY

FARTHING

RESTAURANT

(Licensed)

Gunnarside

OPEN DAILY 10.30 - 5PM

(Closed Tuesday)

BISTRO or RESTAURANT

Wed - Sat evenings

Traditional Sunday Lunches

Booking recommended

Tel. 01748 886239

HILLARY HOUSE

REETH

Family run Bed & Breakfast

One Double &

One Twin Room

Tea & Coffee making facilities

Colour TV

TEL. 01748 884171

Arkengarthdale C.E. School

As usual the end of term is busy but exciting. KS2 eventually got to enjoy their prize at Potteric Carr RSPB Centre in Doncaster. This had been delayed due to the floods. This totally free activity day was for their winning entry in the RSPB competition 'Name Yorkshire's Favourite Bird'. They had a wonderful day making bird boxes, pond dipping, bird watching in the hides and searching for frogs and toads. Lunch was lovely and it was excellent not to have to worry about the cost of the coach. Potteric Carr also gave us a goody box with bird feeders and seed, books, magnifying glasses and wildflower seeds. KS2 then went to the other end of the country to visit Vindolanda Roman Museum. Here they explored the ruins, listened to the archeologist, enjoyed the interactive displays and looked round the museum. However, the highlight of the day was at the Roman Army Museum where some children actually dressed in Roman army costumes. We have a new super camera in school which we have bought with the prize money received from a RDC competition called 'Snap Happy Snap Sad'. This was thanks to the high standard of written work of all KS2 children and the photographic skills of some. KS1 had an equally exciting day at Saltburn. They have been studying the seaside this summer half-term and went to see some of the things they have been talking about. KS1 also enjoyed playing with their friends from Reeth &

Gunnerside Schools for a morning of fun activities and are looking forward to returning the visit next term. Year 6 children had a fun day at Colburn Leisure Centre experiencing several different activities including rock climbing. Eureka Outreach Programme visited school for an afternoon of Science activities. This was thoroughly enjoyed by everyone as well as our four new starters for September. The highlight of this afternoon was me being put in a bubble but unfortunately the bubble didn't last! Well done to James Stones and Jacob who represented school at the Knex Challenge. Thanks to the Friends of the School for all their fundraising efforts and support. KS1 now have three lovely new scooter/bikes. The children have designed Zoo and Dales pictures for a set of notecards which the Friends are selling at £3 per pack. These will be available locally. Finally congratulations to all Year 6 on their outstanding SATS results and we wish them well at their new schools and thank them for their support and enthusiasm in their role as the School Committee. I wish everyone a very happy, restful holiday and send my grateful thanks to my staff, governors, parents and Friends of the School but most of all to the children whose enthusiasm, hard work, positive attitude and fun make our school a lovely place to be. **Mary Hutchinson**

Please support your advertisers, as their contribution keeps our Gazette priceless !




Home Plumbing & Heating Services

Reliable & Professional Service



- All types of heating systems designed and installed including under-floor heating.
- Gas fires including surrounds installed.
- Service and Repairs carried out on all Gas appliances.
- Landlord safety certificates.



- Oil heating systems designed and installed including new upgrades.
- Oil tank installations carried out.
- New Energy efficient Boilers
- Service and Repairs.



- Complete Plumbing service offered including: Bathroom suites • New Showers
- Hot water cylinders • Immersion heaters
- Washing machines • Water storage tanks
- Un-vented hot water cylinders installed.
- All Repairs carried out.

Tel/Fax 01969 667 958

Mobile 07958 537 198

RED WEB

**A locally based
web design company,
providing professional,
stylish and affordable
websites.**

We offer a wide range of creative solutions

- ◆ Full website design service
- ◆ Manage & update existing websites
- ◆ Advice on every aspect of the internet
- ◆ Multimedia production

To find out more, phone John on
01748 886545
or visit our website
www.redweb.red-film.co.uk

Cambridge House

Countryside Guest House
Arkengarthdale Road
Reeth
North Yorkshire
DL11 6QX

Four Star Silver Award

Renovated to a high standard
All en-suite rooms have
spectacular views
Warm welcome assured
Special long stay / winter rates
Please call in or phone Les or
Sandra for a brochure
01748 884633
www.cambridge-house-reeth.co.uk

PLAY WORKERS REQUIRED
for
TWO DALES AFTER SCHOOL CLUB
Starting September 2007
at
REETH MEMORIAL HALL
Mon - Thurs, 3.30 - 5.30pm
NVQ II qualification preferable
Enquiries: Moira Manners
01748 884184

RAYMOND SHURETY
Painting, Decorating,
Sash Window repairs, Glazier
PLEASE CALL FOR FREE
ESTIMATE/ADVICE
01748 886172
07855 454952



Jelly Designs
Handmade Wedding
Stationery

Personalised for individuality and distinction

For further information telephone 01748 821470 or
email: mg.lightfoot@btinternet.com

**TRADITIONAL
HOLIDAY COTTAGES**

To let in
HEALAUGH

A cosy, luxury,
two bed-roomed,
two bath-roomed
cottage, with garden,
in quiet location,
having delightful views
over Swaledale.

Also one & four bedroomed cottages available
4 star ETC. Non smoking
Please tel. 01748 884526
www.swaledale-cottages.co.uk

The Old Dairy
Bed & Breakfast
High quality
guest accommodation
Low Row, Swaledale
* * * *

Tel: 01748 886215
theolddairy@swaledale.org

FAT BURNING  **FLEXIBILITY**

Complete Body Workout

Now started - every Sunday 10.30 - 12.00
at Reeth Memorial Hall
All levels welcome
£3.50 per session or £18 for 6 lessons paid in advance
any profits going to The Pavilion Fund
Can provide baby sitting on site at £2.50 per child - please request in advance

CARDIO VASCULAR **MUSCLE TONING**

For more details
call Janet on 01748 884323

HOLIDAY ACCOMODATION
ARKENGARTHDALE

Riverside, 2 x doubles, grand piano.

CORNWALL
David Bellamy Gold Award, 2 & 3 bedroom cot-
tages. Tennis, Gymn, Plunge Pool,
Sauna and more.

FLORIDA
Cape Coral, 160 miles south of Disney. 3 double
bedrooms, pool, boat dock, Santbel, Captiva 15mins.
Contact: 07940 012198,
01748 884844 ,
01326 214958

SCAR HOUSE, ARKENGARTHDALE
We need someone to help during the
shooting season. Good rates of pay. For
details please contact Mrs. Maureen
Stones on 01748 884730

Neil Wilmore *Est 1988*
HND Landscape Design & Management
info@neilwilmore.co.uk
01969 624555

**Specialist landscape
services**

drystone walling
hedge planting & laying
tree planting
grass seeding & turfing



www.neilwilmore.co.uk



From Dr. Minns on his retirement.

Eleven years have passed since I joined Dr. Bond's medical practice as his associate, after spending 25 years in my own practice in Cheshire, followed by a short period in Tasmania.

I have enjoyed my time in Reeth, appreciating the warm welcome I received and the development of that welcome into friendship. It has been a privilege to care for, and to share in the joys and sorrows of such wonderful people whose homes are in Swaledale and Arkengarthdale.

Thank you to you all. Dr. Paul Bond and his staff at the surgery have all been superb colleagues, making my work a pleasure. I have always been impressed by their professionalism, but above all by their willingness always to go that extra step to provide the best and local care for our patients. Similarly the care provided by the District Nurses, Midwives and at Victoria Ward, The Friary, our Cottage Hospital, is given in a friendly and expert manner. These years have given me the opportunity to follow my other interests of hill walking and riding my vintage motorcycles, which include Shipley built Scotts, in the beautiful countryside of the Yorkshire Dales, and further north. I have enjoyed attending local events, pantomimes, Jazz, North Country Theatre, and the Swaledale festival. Thank you to all who work so hard to provide entertainment, which helps to make the Two Dales so special.

I could not have imagined that these past

eleven years would have produced so many changes in my personal life, which include the birth of my 9 grandsons and above all my marriage to my very special and lovely wife Shirley. Thank you for your interest and best wishes since to Shirley and myself. I am overwhelmed by all the warm messages personally expressed and written on the large card signed at the surgery, and by my colleagues on the 'Chip Van Card'! Thank you to everyone for your generous gifts and for the contributions towards £252 presented to me at the luncheon held at the Burgoyne Hotel on the 3rd. May. Thank you Paul and Sandie for the wonderful luncheon given in Shirley' and my honour at the Burgoyne, also to Derek Hickson and his staff including Paul Salonga and Chris Harker for producing such delightful food in wonderful surroundings. I have used some of the money to purchase a folding workbench to help with all those tasks which mysteriously appear in retirement, and also to help pass on woodworking skills to my elder grandsons. We plan to enjoy a scenic trip on the Settle Carlisle railway when the weather improves. The remainder we will use to buy items for our garden which we are now able to enjoy.

I do apologise that I appear to have taken so long to thank everyone for their best wishes and gifts to mark my retirement, but my earlier 'open letter' written at the beginning of May went astray.

Shirley and I plan to visit the Dales in the future to renew our friendships and to enjoy some of the events mentioned earlier. Sadly we were unable to attend the Festival this year, but I did manage to disturb the peace of the Dales recently whilst riding my 1926 BSA in the Beamish Run. Meanwhile Best wishes, **John Minns.**



Dr. John Minns, wife Shirley and Dr. Paul Bond on the occasion of Dr. Minn's retirement

Before very long a bench, in memory of my parents, William Moralee and Martha [Matty Hammond] Moralee, will be placed by the garden behind the Evangelical Congregational Chapel. Mr and Mrs Gregson and the congregation of the Chapel have very kindly given permission for me to commemorate my parents in this way. The Chapel always meant so much to my parents, especially my mother, who was taken regularly to Sunday School from earliest childhood. As she grew up she attended Chapel services, the Band of Hope and all the many activities that took place there. In 1937 my parents married at the Chapel before leaving Reeth to live in London. In

the last months of her life, before she died last year, my mother's sadly confused thoughts were increasingly back in her childhood and the happy times she had spent at the Chapel. Indeed, latterly, most days would find her dressed in hat and coat, handbag and Bible in hand, asking "Is it time for Chapel?" I hope the memorial bench will prove to be a welcome addition to the Chapel grounds and that those who sit there will enjoy the peace and serenity of the place in comfort. Perhaps their thoughts will stray to all those who, down the years, have worshipped in and loved the little Chapel. Yours sincerely, **E A Moralee**

**LOW ROW****Telephone (01748) 886233**Website: www.pbinn.co.ukE-mail: info@pbinn.co.uk

9 En-suite Bedrooms
with marvellous views of
Swaledale are now available.

We are Open for Lunch and Dinner
Serving Freshly prepared locally
sourced food.

SUNDAY CARVERY

Choice of Meats, Vegetarian & Fish
Option

*£8.95 per person**Booking Advisable*

'Bedale Archaeology & History Society presents a walk round historic Northallerton led by local historian Jennifer Allison on Tuesday 17 July starting at 7 pm at the parish church. This event is free to members and non-members are welcome (£2 - under 16s free).'

THANK YOU

I would like to say a BIG THANK YOU to all the people who sponsored me on my bike ride from Manchester to Blackpool on Sunday 8th. July. You helped me raise £315 for Cancer Research UK.

Ian Whitworth

DON'T FORGET
The 102nd
Grand Annual Show at
MUKER

Wednesday 5th. September 2007**CLEANER REQUIRED**

Marrick priory requires a general cleaner
Mondays and Fridays 9am until 1pm.

The position is seasonal and the applicant
will work a s part of a team. Please call
Win Ryder on 01748 884434 for more
information.



Blaeberry
Cottage

Grinton, Reeth,
Swale dale
North Yorkshire

www.blaeberry.co.uk**Spacious family cottage, sleeps 5.****Ideal for walking in the dales.**

Open fire. Stunning views. Pretty
Garden Tel. Mrs. Hudson for further
details:

01279 654115 or**E- mail: tgh@bsc.biblio.net****Thea's Cottage, Satron**www.theas-cottage.com

Delightful family cottage, sleeps 6 in
three bedrooms, lounge & dining
rooms with open fires, garden.
Lovely views across the Dale. Dogs
welcome.

Tel: 01525 385370 for details or

E-mail: ngh@satron.fsnet.co.uk

What's On At Reeth Memorial Hall

Friday 17th August - 8pm - (from the Agent that brought us Tanglefoot) - Mad Agnes on their 'I'm With The Band' tour of the UK - their 1st British tour. Mad Agnes is Margo Hennebach, Adrienne Jones and Mark Saunders. The Boston Herald reported that *'This trio brims with experience and sophisticated musical gifts ... funny showmanship and the most agile, rambunctious harmonies. The beauty can be intense.'* They have also been described as *'From witty to wildly innovative, there seems nothing out there like Mad Agnes and certainly nothing like it in the folk world. A fusion of folk, pop and classical contrapuntal harmonies, contemporary yet timeless ... from simple a capella to breathtaking instrumentation (guitar, bass, mandolin, keyboard).'* Support is by multi-instrumentalist/vocalist John Burge. Tickets £8 in advance, £9 on the door (half price for under 16's.) Friday 21st September - 8pm - SteamRadio - an excellent six piece band with a wealth of experience in Irish and traditional music. Members have played with the Vin Garbutt Band, the O'Boyle Band, the Champion String Band, The Rub and various Ceilidh bands. Between them they will bring vocals, acoustic guitar, English Great Pipes, whistles, fiddles, keyboards, electric guitar, bass guitar, mandolin, octave mandolin, bouzouki, drums and percussion. They play a mix of traditional numbers and their own material *'inspired by years of immersion in Celtic music'*. Tickets £7 in advance, £8 on the door (half price for under 16's).



Telephone 01748 884567

www.cbinn.co.uk

info@cbinn.co.uk

Come & Enjoy outstanding fresh food in a warm and Friendly Atmosphere.

All of our 19 en-suite bedrooms have amazing views of Arkengarthdale, with Midweek and Weekend Special Breaks available.

Our 'Terrace Room' is available for the small of medium sized Dinner Party, Wedding or Conference.

For a Brochure or to Reserve a Table

Please Telephone 01748 884567

'GOOD PUB GUIDE'

INN OF THE YEAR 2006

LOOKING FOR A WINDOW CLEANER?

Then contact Will Eves'
Window Cleaning Services
REGULAR & RELIABLE
FIRST CLASS SERVICE

ALL AREAS OF THE DALES COVERED

Phone 01833-637936

or 07732987553



Reeth and Gunnerside Schools

By the time you read this we will all be on holiday, recovering after a particularly busy term.

The second half of the summer term started with KS2 children attending an extremely lively percussion workshop with 'O Duo' as part of the Swaledale Festival. The ballet 'Mirabel and the Wand' was performed in the Memorial Hall; choreographed by Janet Seymour with a text written by David Dixon, this was an enchanting production which starred some talented dancers from the schools in our area. A photo of the dancers was featured in the Northern Echo; they all looked very angelic, with the exception of the troll of course! The Y3/4 children also sang alongside professional musicians in a performance of Carmen which was a wonderful community event that attracted a capacity audience at St. Andrews. Two of our Y6 pupils, Tom Bearpark and Lily Sammells, attended the area heat of the Young Engineers for Britain/K'Nex in York and gained third place with a prize of a large set of K'Nex for the school. Congratulations to Tom and Lily for achieving this well deserved prize. Early in June we held an Arts Week, working in conjunction with Rural Arts making a series of mosaic stepping stones. All of our children took part in mixed age groups, with older children supporting the younger ones. We were very grateful to all the parents who volunteered to help with this project and look forward to placing the tiles at both our school sites. The Nursery

children visited Preston Park Butterfly World and Reception children visited Northdale to link with their work on gardens. Y5/6 took part in a Science workshop as part of the Eureka Science Museum's outreach programme and Y6 children visited Colburn for an activity day where they were able to work alongside other children who will be moving on to secondary education. Y1 and Y2 children visited a multi faith centre in Bradford and worked with Curriculum Kitchen on 'Faith Food,' as part of their RE studies. Curriculum Kitchen also worked with Y5/6 children on Viking Food. KS2 children visited the Shipley Gallery and the Saltwell Park sculpture trail in Gateshead in July. This visit tied in with the colour and pattern theme for this term. Our Y3/4 class visited our partner school in Middlesbrough and the Abingdon children visited our schools two weeks later. This annual visit is always very interesting and productive as the children share their different backgrounds and explore each other's schools. Reeth Friends organised a strawberry cream tea afternoon at Hudson House and Gunnerside Friends organised a walk from Muker to Gunnerside and a Leavers' Disco. The leavers had their night out playing bowls at Catterick and enjoying a pizza at 'La Piazza.' A Leavers' Service was held in the Methodist Chapel at Gunnerside at the end of term. Our Leavers' Concert took place at Reeth Memorial Hall in July. The play, entitled 'A load of Rubbish,' was written by Tim Rylands, a charismatic teacher who I heard speaking at a conference in Gateshead last year. It was a refreshingly uncomplicated

REETH AND DISTRICT GAZETTE

story of a gang of children and their struggle to save the area where they play from a callous developer. It was about being yourself, accepting weaknesses and going for what you believe in, even when you experience failure. This seemed like an appropriate message to give to our leavers who will soon be moving on to secondary school. We wish all our leavers every success and happiness for the future. We will miss them. **Jill E Wilkinson**

REETH & DISTRICT SPORTS ASSOCIATION

ANNUAL SPORTS DAY

SAT. 11TH AUGUST 2007

To commence at 1pm on Reeth High Row
Children's Fancy Dress: Traditional
Children's Races : Tombola : Bouncy
Castle : Reeth Band : Face Painting

Quoits : Tug - of - War.

Donations of items for the Tombola would be gratefully received. These can be left with Suzann at Reeth Village Stores or given to Clare Brown, Margaret Porter or Helen Raw.

Saving Used Stamps

I am still collecting used stamps. This year I am just sending to one charity which is the Sunshine Fund for Blind Children, where any money raised helps to buy equipment for blind children.

Please leave at least 1cm of paper around the stamp or just tear it with a generous amount around. I have a willing helper who happily helps to cut round them for me before they are sent away - thanks Dorothy. The drop off points are Reeth Post Office, Swaledale Woollens or East Lea, Muker. I would like to thank everyone who saves stamps for me and also the drop off points for collecting them.

Sue Thompson

MUKER LADIES GUILD would like to thank everyone who helped to make their Pate and Pudding Evening such a success. In spite of the 'promise' of rain, many people managed to complete the JIGSAW TRAIL and put together a magnificent picture of Norma Guy in conversation with Lesley Garrett. £450 was raised for the local and Air Ambulance Service.

Swaledale Festival Competition

As many will know The Friends of the Festival ran a competition to guess the number of different instruments played at the Festival. In the event of a tie the decider would be the number of tickets sold.

The answers were 88 types of instrument, determined by the Artistic Director, Justin Doyle, and the number of tickets sold 3788. No one got the types of instrument, three people were five away so the number of tickers sold was taken into account. Mrs J Loadman, of Constable Burton, won a dinner for 2 at the Bridge Inn, kindly donated by Andrew Atkin. The competition raised £114 for the Festival.

Thank you to all who took part.

John Borland, Friends Chairman.

Allison and Robert Stubbs invite you to their:	
AFTERNOON CREAM TEA	
Adults: £3:50 / Children £1:50	
Scar View, Langthwaite, DL11 6EJ On August 19 th 2007	
 IN AID OF THE 2DALES JUNIOR FOOTBALL CLUB	
Grand Raffle	Spot the Ball
Cake Stall	
Please come and support our event	

**MUKER PARISH COUNCIL From
PARISH COUNCIL MEETING HELD ON
3rd JULY, 2007**

FINANCE: Payment was agreed for work to village notice boards - erection of a new board at Thwaite and repair work to the board at Keld. **RICHMONDSHIRE**

DISTRICT COUNCIL: Information about the Heritage Grant Scheme and Funding for Play from the Big Lottery is being held by the clerk. Notices were received about Active Life Day in Richmond and the Woodland Diversity Day at Foxglove Covert Nature Reserve. No objections were raised for the re-siting of a Wind Turbine at Tan Hill Inn; planning permission had already been given earlier in the year. The clerk was asked to contact the relevant Council department to complain about a horse being tethered by the recycling enclosure in Muker car park. Several residents wanting to use the recycling bins are being intimidated by the presence of the horse. **NORTH**

YORKSHIRE COUNTY COUNCIL: A further Parish Council update regarding the application from NYCC for a single Unitary Council entitled 'A New Council for North Yorkshire'. Notice of the erection of signs for an approved cycle route from Northallerton to Penrith which goes through Muker Parish at Tan Hill. **YORKSHIRE DALES NATIONAL PARK**

AUTHORITY: Notice was received of the public consultation on options for Housing, Minerals and Waste, planning policy. **YORKSHIRE LOCAL COUNCILS**

ASSOCIATION: Mr Harold Brown from Grinton was elected as the Parish Representative appointment to the

Yorkshire Dales National Park Authority. The Parish Council was asked to vote for two Parish representatives to the Richmondshire District Council Standards Board. **OTHER CORRESPONDENCE:**

The Standards Board for England has given guidance to Councillors on the revised Members' Code of Conduct by supplying them with 'The Code of Conduct: Guide for members' and 'The Code of Conduct: Pocket guide'. There was information about Richmondshire Senior Forum and from Yorwoods regarding Woodfuel Renewable Energy Opportunities for Rural Communities. There was a letter from the Chairman of Middleham Town Council suggesting a meeting regarding opposition to a Single **UNITARY**

AUTHORITY. Also received was a consultation document and invitation to comment on the proposed changes to the North East Regional Spatial Strategy. The next Parish Council meeting will be held at 7.30 pm on Tuesday 21st August, 2007, in Muker Institute.

Malcolm and Freda of Harker's Coaches would like to thank family and friends, neighbours and all local businesses for their kind donations and help on their Coffee Morning. A totals of £1,800 was raised for MacMillan Cancer Support

NURSE CHERRY COTTAGE

Beautiful 2 bedroomed cottage in Reeth

Down quiet back lane : Private parking : Cottage garden :

All amenities in walking distance : Children welcome .

Sorry no smokers or pets

www.xcottagesinreeth.co.uk

Mr & Mrs Waller Tel: 0194 79027 or 0191 12665

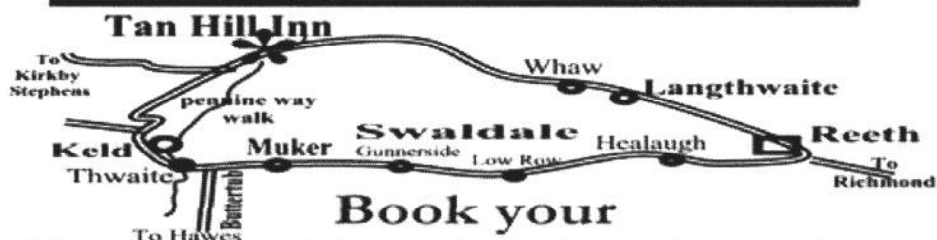


all day 11.45am- 9.45pm
until 9th Sept

Now serving Tantucky Fried Chicken
from a bucket (not KFC)

Come and meet Izzy the lamb and and
Tan as seen on TV

**Live music nights
throughout August**



**Book your
Christmas Day Family Feast Now
Summer & Winter Accommodation Breaks**

Tan Hill Inn, situated in the remote northern
hills of the North Yorkshire Pennines
has seven well appointed en-suite rooms available
for long weekend, mid-week and extended breaks

(01833) 628 246 info@tanhillinn.com
www.tanhillinn.com

Have You Visited Our Garden Centre?

Carl Johnson
**LANDSCAPES
AND AQUATICS**

Come and have a look at our exciting new products for 2007!

Do you have a pond?

Come and have a look at our range of pond accessories, superb quality pond plants and our new range of pond fish.

Koi Carp
from
£4.99

Looking for something different for your garden?

Why not come and have a look at our showroom and see our great range of granite water features and fantastic quality garden furniture. We also have a good range of top quality plants and plant pots and much much more for your garden. Come down and have a look. If you are looking for something in your garden, I am sure we will be able to help you with what you need.



OPEN 7 DAYS A WEEK AND LATE NIGHT TILL 8.00PM ON THURSDAYS

Borough Road | Gallowfields Trading Estate | Richmond | North Yorkshire

Tel: 01748 824058

Visit our website: www.richmondgardencentre.co.uk

THE SWALEDALE FESTIVAL

Following the most successful Swaledale Festival in years, trustees of this annual festival of music and arts are looking for new and additional staff. John Sparke, Chairman of the Festival Board said, "With a fresh new programme, and a number of organisational changes, we saw a terrific growth in the numbers of visitors attending each Festival event. This has really stretched our volunteers and our few part-time employed staff. If we are to build the 2008 Festival on this year's success our staff resources will be stretched even further. Our Artistic Director, Justin Doyle, delivered a superb programme of events this year, including an exciting concert version of Carmen where the four principal singers were joined by a choir of children from Richmondshire schools and Spanish dancers. Now, with great regret on both sides, and with a great career ahead of him as a conductor, he has decided to go, but we expect to bring him back in the future, with a

baton in his hand!" Justin Doyle added, "Although I am extremely sorry to have to move on after only one year, I am really proud of what we have achieved - the 2007 Festival was a huge success and I hope that we have inspired a deeper love of music in many people." In addition to a new Artistic Director, the Festival is looking to recruit operational staff and volunteers for the busy period in April - June 2008. Details of the Artistic Director position may be found on the Festival's Website, www.swaledale-festival.org.uk. The vacancy will be formally advertised in mid August.

**The Gazette welcomes all items
for inclusion, in any form.**

**Pictures for the front are
particularly welcome. Please send
all material to the Editor or leave
at Reeth Post Office**

GREAT WAR PILGRIMAGE **TO** **THE WESTERN FRONT**



Following enquiries from a number of local people, Chris Best is offering to take a Two Dales group to The Western Front this winter. The tour will explore The Ypres Salient, The Somme and, time permitting, Arras and Vimy Ridge. Particular attention will be paid to group members whose ancestors fought in those places and to those who died and who are commemorated on Reeth, Arkengarthdale and other local War Memorials.

Chris spent 37 years as a Regular soldier. Since retiring from the Army in 2001 he has guided many military groups on battlefields around Europe and Asia. He lectures throughout the UK to military audiences, professional groups, dining clubs and local societies.

He has also taken small groups of individuals on pilgrimage. Using Official and Regimental Histories, war diaries and trench maps he helped them trace the footsteps, graves or memorials of their forebears. Importantly, he helped them understand: why the war was fought; how soldiers were recruited and trained; the nature of the battlefield and evolution of tactics. But the overarching area of discussion is the daily life of the men and women who went to war and of those they left behind.

To learn more about this pilgrimage, or to express an interest without commitment, please ring Chris on 01748 884062.

Swaledale Museum in Reeth

Poetry in Performance Day 2007!

Read by Dominic Goodwin Enjoy the words of Keats, Tennyson, Sassoon, Owen, Coward and many other poets. Wednesday 8th August 2007 10am - 11am: Strictly for the kids! A fun session of poetry for 5-9 year olds.

Lewis Carroll, James Reeves, Michael Rosen and much more 12 noon - 1pm: The Classics Shakespeare, Tennyson, Dickens, Sassoon, Owen & much more 2 - 3pm: Along the Swale to modernity! Local interest to Coward, Wendy Cope, Betjeman and beyond! Tickets: Children's hour: £3 12 noon and 2pm: £3.50 each or £6 for both performances ** Entry also includes free entry into the museum Tickets available from: 01748 884118 BOOK EARLY AS SEATS LIMITED

Dominic Goodwin is a York based actor regularly seen at Helmsley Arts Centre, Georgian Theatre Royal Richmond, and other venues. Recent credits include Siegfried Sassoon in Stephen MacDonald's World War 1 play "Not about heroes" Jack in "September in the Rain" and Character voices for "The Man Who Wrote Lassie" for BBC Radio 4.

Love country? Love sun? Love horses?

Spanish farmhouse self-catering accommodation . 14km inland from coast. Pool. Please call Pat ON

01748 884781 or

pat@fincapacheco.com

TWO DALES DIARY DATES**August**

- 8th** Poetry in Performance Day
Swaledale Museum
- 11th** Reeth Sports Day
- 17th** Mad Agnes and John Burge Reeth
Memorial Hall
- 21st** Muker Parish Council
- 25th** Wensleydale Show, The showfield,
Bellerby Road, Leyburn
- 29th.** **REETH SHOW** at the Showfield
Reeth

September

- 5th** **MUKER SHOW** at the Showfield,
Muker
- 7th.** Brass Band and Choir Concert
Arkengarthdale Methodist
Church in aid of Chapel and St.
Mary's funds.
- 7th - 9th**
Christian Heritage Weekend -
check with local churches for
events.
- 9th** Hardraw Brass Band Competition,
Hardraw Wensleydale.
- 21st** 'Steam Radio' Memorial Hall Reeth
at 8pm
- 22nd.** York Philharmonic Male Voice
Choir, St. Mary's Church,
Arkengarthdale. 7pm.

October

- 18th** Bob Fox and Billy Mitchell, Reeth
Memorial Hall.

**DIARY DATE**

**Reeth Sports Day will be on the
11th. August 2007**

The Gazette makes a useful, inexpensive present,
why not give an annual subscription ? Contact the
Subscription Secretary for details (address on
page 21)

S. J. R. Plumbing Services**For all your domestic plumbing**

Requirements at very competitive rates,
Please call Stuart on: 01748 884036

**The Reeth Tea Dance**

Thursday 18th August

in the Reeth Memorial
Hall. There will be 50/50
dancing with live music from
the Mike Rose Band. All are
welcome and admission is
just £2,
including light refreshments.

The Gazette welcomes letters and articles on all
subjects. Please send to the Editor 01748
886111 /886505 or email :
GML1@gallowstop.fsnet.co.uk

THE BURGROYNE HOTEL

REETH

Eight Luxurious Bedrooms
With Views Over Swaledale

Dinner served at 8pm each
Evening, menu changes daily.
Parties up to 35 catered for.

Contact

Telephone 01748 884292

HAZEL SMITH
STUDIO AND GALLERY
ESTABLISHED 1997



ORIGINAL PAINTINGS
PRINTS AND CARDS

THE ONLY GALLERY TO SELL WORK
EXCLUSIVE TO REETH

NEWLY RELOCATED TO
ABOVE THE GIFT SHOP ON THE GREEN
REETH

OPEN MONDAY - SATURDAY 10.00-5.00

THE OLD TEMPERANCE
BOOKSHOP

Reeth, Richmond, DL11 6TE
Tel. 01748 884185



Christian Books, Crafts & Cards
On Reeth Green, 50 yards up from
Reeth Evangelical
Congregational Church

Opening times :

1.30pm - 4.00pm Mon., Thurs., Sat.

10.30am - 4.00pm Fri. (Market Day)

*'Still open as normal since the fire,
thanks be to God'*



RIDING CENTRE

in the Yorkshire Dales

Brand new purpose built
arena

Stunning Hacking over the
moors

Novice and experienced
riders welcome

BET Ride Leader qualified

Contact Jane on 01748 884731
E mail Arklemoor@hotmail.com
www.arklemoor.com

Sharon Atkinson

East Faggersgill, Arkengarthdale

OFSTED REGISTERED CHILDMINDER

All aged children and situations considered as well
as local school journeys, morning and afternoons.

Please telephone 01748 884011



ICECREAM

PARLOUR

Situated overlooking
Reeth Green

Choose from 16 flavours of delicious
Brymor Real Dairy Ice Cream served
in a glass, or a variety of cornets.

Treat yourself to a
Mouth watering Sundae
Tea & Coffee

01748 - 884929

SWALEDALE WOOLLENS**of
MUKER**

The lovely Dales village of **Muker** lies in a walkers' paradise and has been the home to **Swaledale Woollens** for nearly 30 years. Our unique shop is open all year and you are welcome to browse through our exclusive range of locally produced hand and machine-knitted garments, all made to the highest of standards from Swaledale and Wensleydale wools.

A new mail order brochure is now available and our exciting web-site is well worth a visit.

Swaledale Woollens (2002)
Muker, Richmond, N. Yorkshire
DL11 6QG

For our mail order brochure call or click 24 hours a day.

01748 - 886251 or

www.swaledalewoollens.co.uk

Plans Prepared.

Detail plans prepared for planning applications and building regulations for conversions, extensions and new builds.

Contact G. Staines

Tel. 01748 886691 Mob: 07896 147207

PROBLEMS WITH YOUR COMPUTER

I CAN : advise you,
sort out the computer,
train you on how to get the most out of the
PC. give good technical advice.
show you how to do backup
how to tackle virus problems
and more besides
can travel and work within the whole of
SWALEDALE
Call me, Pia Haley on 01748 886804

Darren Chadwick

Home maintenance, repairs, and
improvements

FULL HANDYMAN SERVICE

Decorating, joinery, plumbing, building
work

All jobs considered

Tel: Darren 01748 886698 or

Email: swalecaretakers@aol.com

C. J. BEESTON**Chartered Accountant**

Personal Taxation Accounts - Payroll/VAT
The Laurels, Reeth.

Tel. & Fax : 01748 - 884535

G E BROWN & SON

Building Contractors
UPVC Doors - Windows
& Conservatories Approved
Agent for Damp Proof Course
& Timber Treatment
Specialist Joinery Work
Sliding Sash Casement Windows
Works carried out by
qualified craftsmen
The Old Mill, Low Row.
Tel: 01748 886356
Fax: 01748 886026

PATRICIA**DAIRY COTTAGE, LOW ROW**

Experienced in both Men's and Ladies
sewing alterations.

Most sewing tasks undertaken

'Will Come to you'

01748 886905

THE GIFT SHOP * REETH

GARRY AND KAREN ATKINSON

Newsagent: Daily & Weekend Newspapers, Magazines & Comics

Off-Licence: Variety of Beers, Wines, Spirits, Cigarettes & Tobacco

Original Swaledale Ice Cream : Try one of our tantalising flavours or delicious sorbets which are all made on the premises. Take away tubs also available.

Fresh Sandwiches : made daily - orders welcome.

Giftware : An exquisite selection of gifts for all occasions. Also available, greetings cards, postcards, maps & guides, walking sticks, stationery, books, games, toys, milk and many household items.

Agents for : Dry Cleaning, Laundry and Photo Processing

NEW Now stocking regulation ballet wear, shoes & accessories also for modern dance.

Tel. 01748 884291

BUCK HOTEL REETH

Part Time

**Admin/Receptionist
required**

for mornings 5 days

Please contact Peter

01748 884210

ALGARVE PORTUGAL

New Luxury Villa & Apartment To Rent
Own Private Pool, Peacefull Area, Only
1½ Miles To Blue Flag Atlantic Beaches

Walking, Birdwatching, Surfing,
Availiable All Year,

No Smoking, No children.

01748886361

Email brianjutsum@aol.com

WEBSITE www.jutsum.co.uk/villa

skeltonstudio

DESIGN COLOUR FABRICS

Specialising in soft furnishings
Curtains & window treatments

T 01748 821107/M 07710 692 809
neather@skeltonhall.fsnet.co.uk

Breakfree Centre

Every Friday 10am - 12noon at the
Quaker Meeting House, Grove Square,
Leyburn. A meeting place for people with
memory problems their families and their
carers Dales Carer Support Worker
Roger Barnett in attendance.

Richmondshire Alzheimer's Society
Reg. Charity No 296645

Reeth Village Store

We supply everything from locally baked Bread, Pastries, Cakes, Fresh Fruit & Vegetables, Dairy Produce, Soft Drinks, Ice Cream, Household Goods, Confectionery, Tobacco & Greeting Cards.



CASH MACHINE INSTORE

- Daily & Weekend Papers
- Fine selection of Wines & Spirits
- Ready to cook meals Indian & Chinese
- Latest Videos to rent

Proprietors **GUY & SUZANN**

Mon - Fri 7 am - 7.30 pm
Saturday 7 am - 7 pm
Sunday 8 am - 4 pm

Service with a 'SMILE'

TEL. 01748 884552 - Free Local Delivery

ELECTRONIC PHONE CARD TOP UP

RC

The Chyll

Bed & Breakfast

Arkle Town, Arkengarthdale

Set in wonderful countryside,

With spectacular views of Arkengarthdale

All bedrooms en-suite with colour TV

For details contact Mrs. Sheila Good

on 01748 884353 or Fax 01748 884015

C.L.A. Construction

Stonemasonry

All types of stone walling

General Building

Contact Colin Atkinson

Tel. 01677 422380

Mob. 07854 295279

Kim and Richard Atkinson

WELCOME YOU TO THE BLACK BULL



REETH

The oldest Inn in Reeth

Quality accommodation

Excellent food

(very popular Sunday carvery)

A fine selection of
Real Ales and Wines

And a warm welcome

Tel. 01748 884213

HELP !

Our organic Health Care Business is expanding! Home based, initially part time, self employed. Full training and support. Excellent rewards. If you are honest, ethical and hardworking, please contact Ann on 01748 884721

Lownethwaite Landscapes

ALL ASPECTS OF HARD LANDSCAPING

Block Paving, Tarmac, Concrete Drives,
Paths, Patios, Gravel, Turfing,
Walling Maintenance, Fences, Gates,
Pergolas, Hedge Cutting,
Pruning, Treework, Rubbish Removal,
Mini Digger Work, Decking

ALL AREAS COVERED SO CALL

01748 824861

or

07773 740611

FOR A FREE FAST QUOTE



**Don't forget, a subscription to
the Gazette makes an excellent
present for any occasion.**



FOR SALE

Polecat Ferrets 01748 886504

White Fantail Doves. 01748 886504

Various Breeds of Poultry 01748 886504

WANTED

Weekend Staff required for Hazel Brow Tea Room, contact Sharon Atkinson on 01748 884011

Old Paper Shotgun Cartridges wanted by collector. Tel. 01986 892071.

Person for occasional work in holiday cottage. Cleaning and ironing, mainly on school holidays. Suit suitable sixth former. Top rates paid. Please ring 02083492507

To advertise in the Market Place, please contact the Editor, address and telephone number on page 3.

CROFT FARM BOARDING KENNELS : GRINTON

Brand new purpose built kennels open December 2006

LARGE SPACIOUS RUNS; 3 FIELD WALKS DAILY

DIETS CATERED FOR ; 24HR. VETINARY ASSISTANCE

BACKGROUND MUSIC ; BALL PLAY AREA

HEATED SLEEPING AREA ; RAISED BEDS AND VET BEDDING

also DAILY CRÊCHE AVAILABLE

Contact Janet Sunter on 01748 884624 or 0781 3614263

RICHMONDSHIRE CAB OUTREACH ADVICE SERVICE REOPENS TO THE PUBLIC

As reported back in May of this year, Richmondshire Citizens Advice Bureau secured funding from the Big Lottery Fund. One of the things this has enabled the Bureau to do is reopen the outreach advice sessions, these are sessions that offer advice on any subject for people who cannot access the bureau in Richmond. The sessions will be running at Hawes, Reeth, Colburn and also Leyburn.

Rachel Hunter a caseworker and the co-ordinator of the project said "this is fantastic news we are so pleased to be able to offer the service once again to the more rural communities. I am looking forward to expanding these sessions, as we are also aiming to recruit and train more volunteers who will assist in the running of them". For details and appointments please ring Richmondshire District Council on 01748 829100 extension 701. For more information, call Angie House or Rachel Hunter at Richmondshire CAB on 01748 826532.

The advice provided by the Citizens Advice service is free, independent, confidential, and impartial, and available to everyone regardless of race, sex, disability, sexuality or nationality. Most Citizens Advice service staff are trained volunteers, working at around 2000 service outlets across England and Wales. For more advice and information visit www.adviceguide.org.uk

The is Volunteer hotline 08451 264264

Supported by **The National Lottery**
through the Big Lottery Fund



**Remember the September
deadline is AUGUST 15th.**

Moving From The Outside Track To The Fast Lane

A five-piece band with a truly diverse line-up from Ireland, Scotland, England and Canada is rapidly earning a reputation for producing "the most exciting music, let alone folk music, in years" (Karen Tweed).

The Outside Track formed in 2005 at the World Academy of Music and Dance in Limerick combine music from all their members different cultures to form a distinct and dynamic sound. Flute, harp, fiddle, guitar, accordion and vocals combine in expressive, energetic arrangements that deliver traditional music with a modern twist. **"A wonderful performance that show-cased talent and virtuosity"** - The Munster Express. Audiences in the dales have a chance to enjoy their virtuosity when they play the **Elite Cinema, Leyburn on Saturday 11th August at 7.30pm** as part of AiR's world music series (bar and doors open at 7.00pm) **Tickets priced £8 in advance and £9.50 on the door** are already selling well and can be purchased from the **TICs at Leyburn (01969 623069) and Richmond (01748 850252)**. With an average age of well below 25 the members of the band may be young, but between them they have credentials that many veteran bands could wish for. The various members have been: runner up in the 'The Tradition Awards', semi finalist in the 2005 BBC Radio 2 Young Folk Award, 1st prize winner at the inaugural London Harp Competition and best overall musician at the Edinburgh Competition Festival.

REETH AND DISTRICT GAZETTE

WENSLEYDALE TREE & HORTICULTURAL SERVICES

(Est. 1995)

DAVID ALLEN (HND Arboriculture)

Fully insured (£5million)

Professional tree work: felling, crown thinning etc undertaken to BS 3998
Hedge establishment and maintenance. Supply /planting of forest and ornamental trees

Logs for sale. Woodchipper for hire. Woodchips for sale

Fruit tree maintenance. Pesticide applications (weed control services)

Also, fencing, trelliswork, pergolas, arches.

Tel. 01969 667364, Mobile 07811 576108 or e: mail -

david@allen3069.freesevice.co.uk

www.treesinwensleydale.co.uk



Gunnerside WI July Meeting Report

Little did one of our members know that the delightful small silver milk jug she inherited from her mother would be the centre of interest at the July meeting of Gunnerside WI. Helen Bainbridge, curator of the Swaledale Museum in Reeth, used it to demonstrate the various aspects of silversmithing as part of her talk "Learning about your silver". The jug had been hammered, chased and embossed, as well as having caste legs. Helen also used items brought by other members to illustrate the difference between fine and sterling silver. She explained how, although not always reliably, the hallmarks can tell you where

a piece was made and when. Most intriguing is the anchor mark, denoting a piece has been made in landlocked Birmingham! A pair of silver sunglasses, that today would not look out of place on the catwalks of Milan, and which are the only silver item in the Swaledale Museum's collection, provided the finale to the talk. There is no evening meeting in August, but the branch will be holding its annual coffee morning, serving delicious scones, tea and coffee, on Monday 27th August 2007 at 10am at Gunnerside Village Hall. There will also be cake and preserves, plant, book and white elephant stalls and a raffle. So please do come along.



ANGEL CHOCOLATES

**Fresh chocolates and truffles, hand-cut slabs, dipped apricots,
hot chocolate, mini dinosaurs, giant hearts and much more**

Made by hand using the finest quality ingredients including Valrhona chocolate and fresh local cream
No artificial preservatives, flavours or colours

Gift service available * Can be posted anywhere in the UK

Phone or email for a leaflet

Phone: 01748 884374 or Email: angel@swaledale.org

Melanie and Leigh Torrance, The Hayloft, 1c Silver Street, Reeth, North Yorkshire, DL11 6SP

Why not come and meet us at these Northern and Southern Dales Farmers' Markets:

Stokesley (1st Sat of the month); Captain Cook's Square, Middlesbrough (1st Tues); Harrogate (2nd Thurs); Hartlepool (2nd Sat); Settle (2nd Sun); Richmond (3rd Sat); Grassington (3rd Sun); Northallerton (4th Wed); Leyburn (4th Sat); Nature's World, Acklam, Middlesbrough (last Sunday)

R. & W. GIBSON & SON Ltd.

**CERAMIC WALL
& FLOOR TILERS**
SHOWROOM NOW OPEN

Monday - Friday 9.00 am -
4.30pm

Saturday 10 am - 1 pm
(or by appointment)

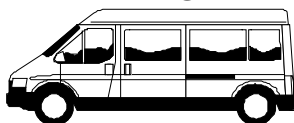
At Firby Road,
Gallowfields Trading Estate
DL10 4SS
Tel. 01748 - 822682 (Home)

**WANTED : Person for
occasional work in holiday
cottage, cleaning & ironing,
mainly in school holidays. Suit
capable sixth former. Top rates
paid. Please ring 02083492507**

HARKERS COACHES

**LEAHOLME COTTAGE, REETH,
RICHMOND,
NORTH YORKSHIRE, DL11 6SF.
TELEPHONE 01748 884533**

harkerscoaches@aol.com



**WHEELCHAIR ACCESSIBLE MINI BUS.
MINI BUSES 7 TO 24 SEATERS
PRIVATE HIRE.
ARKENGARThDALE SERVICE
WE HAVE A SERVICE TO CONNECT
WITH THE
SERVICE BUS AT REETH**

PLEASE RING BY 6/O'CLOCK THE NIGHT BEFORE
TO USE THIS SERVICE

**TRANSPORT FOR AIRPORTS AND
TRAIN STATIONS**

FREE QUOTATIONS GIVEN
PROPRIETORS .M.M&F.M.TERRY
WE NOW TAKE THE TRAVEL

VOUCHERS

SUPPLIED BY RICHMONDSHIRE DISTRICT

**Next Deadline
is August 15th.**

LAND MAINTENANCE

Richard Baker

Professional ground clearance, tree felling, hedge trimming, wood
chipping, grass cutting, rubbish removal, pesticide applications,
fencing & rabbit proofing.

Please call

Richard Baker 01748-884178

Mobile: 07866-200687

BAKER DEVELOPMENTS

restoration and new builds

**All aspects of building work
Restoration and Conversions**

- New Builds • Extensions • Alterations • Insurance Work
- Guaranteed Woodworm Timber Treatments
- Pointing • Dry Lining
- Plastering & Rendering

Quality workmanship by experienced tradesmen
Contact John Baker

Tel 01748 884731 Mob: 07813 708254

W & D. GARNER

& partners

9 Market Place, Bedale

Tel: 01677 423193/424896

FRUIT, VEGETABLES &
EXOTICS

See us every

Friday at Reeth Market

Also we supply Restaurants,
Hotels, B&B's, Cafes etc. in the
surrounding area.

We deliver Monday, Wednesday
and Friday - Winter & Summer

Why not try our goods?



Sweepin' The Dales

Take the worry and mess out of
having your chimney swept.
Contact **Tony Bell**, and take
advantage of the following

- Clean, safe and thorough, with
minimum disruption to your
daily routine.
- Fully insured.
- Certificate of cleaning issued.

Tony Bell

Tel. 01748 811645

Email : Sweepinthedales@yahoo.co.uk

YOGA GROUP

**STRETCH AND RELAX WITH
EILEEN AND FRIENDS**

We are a friendly group who practice
yoga-based exercises to help strengthen
the body and improve flexibility. We will be
starting the Autumn term on Thursday 4th.
October at 10.00am in Fremington Sunday
School. All ages and abilities are welcome
to join us. For more details contact Eileen

ELECSA

Free Estimates

Part P Approved

IAN HALL ELECTRICAL SERVICES

Complete design, installation, maintenance and repair service of
Domestic, Agricultural and Commercial
Inspection, Testing and Certification

PAT - Portable Appliance Testing

01748 884462 or 07739 585311

HALLhllv@aol.com

JIB registered & Member of the Institute of Electrical Engineers



**REETH
EVANGELICAL CONGREGATIONAL CHURCH**

HOLIDAY BIBLE CLUB



**‘THE PEOPLE
JESUS MET’**

20th – 24th August, 10am to noon

Bible Stories ~ Quizzes

Picnic ~ Crafts

Family Fun

Games ~ Music



FOR ALL CHILDREN OF PRIMARY SCHOOL AGE

(5 years & up)

Also Wednesday 22nd August, 7.30-9pm, for anyone of Secondary School age

For more details please ring Elizabeth Gregson on (01748)884401

REETH AND DISTRICT GAZETTE

TONY SUNTER BUILD LTD.
New Builds
Renovations
Extensions
General Building Work
carried out
01748 884624
07973 767023

Superb Holiday Cottage
ARKENGARThDALE

Quiet and private location with
 excellent views
 Sleeps six - centrally heated -
 Modernised
 & equipped to an extremely high standard
 Available all year PLUS
 Low season mini - breaks
Mrs. G. Stones 01748 884360

GL

BUILDING AND DECORATING
FREE ESTIMATES
FULL INSURANCE
QUALITY WORK
Tel. Home 01748 884459
Work 07866 718210

FATSHEEP



from the Dales

Reeth Green, Reeth
Handmade Crafts and Gifts.
Jewellery, Woodware, Pottery,
Soap, Jams, Honey, Chocolate,
Cards, Prints, Candles, Textiles
and much more.

Everything we sell was made
in the Yorkshire Dales.

☎ 01748 880189
🌐 www.fatsheep.co.uk

The CB Inn
ALTERNATIVE



The last Friday of every month
No experts. Prizes for best & worst



**FOR YOUR COAL &
 SMOKELESS FUELS**

JAMES PEACOCK

Approved Coal & Fuel Merchants
 Speedy & reliable deliveries of Solid
 Fuels & Oils throughout the
 Swaledale & Arkengarthdale area.

Tel. 01969 650465

Fax : 01969 650888

THE CARPENTERS SHOP

Manufacturers of purpose made joinery.

Curved and circular joinery specialists.

Supplier and Installer of

Hardwood and softwood traditional box sash windows
 that accept Pilkington K double glazing,
 fully weather - stripped and made to any design and shape.

Hardwood and softwood weather - stripped windows
 of any design to accept triple glazed units also

Many more joinery products.

Fully equipped joiner's workshop
 for any individual joinery requirements.

ALL work made by time served craftsmen.

Please call John for a FREE quotation
TEL. 01748 884193

John Pilgrim
Carpenter and Joiner



In touch with your roots

*Landscape Design
& Garden Enhancement*

Creating Landscape
Architecture for all budgets
from consultation,
to design, to build

Telephone 01748 884280
www.bakersquared.co.uk

Tree Surgeon

Trevor Grigg

NCArb and NPTC qualified

- Crown thinning/cleaning and lifting
- Felling and dismantling
- Chainsaw/groundwork

All work considered

For free advice please telephone

FREMINGTON (01748) 880149

Spacious Holiday Cottage between Gunnerside & Muker

High quality and well equipped.
Open fire. C/H. Beamed ceilings.

Private enclosed garden.

Sleeps 6/7 - three large bedrooms.
DVD.

Free unlimited wireless broadband

Pets welcome.

Non smoking

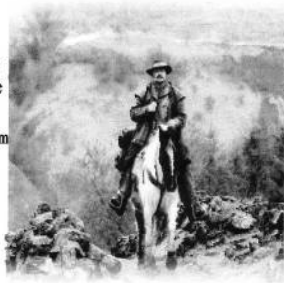
Tel. 01422 833999

www.dales-cottages.co.uk

Swaledale Ponies

Western style riding in the heart of the Yorkshire Dales

- Horses bought and sold.
- western saddles and tack for sale
- Training of young/problem horses for western or driving.
- Training pen available for hire.



Swaledale Ponies
Skeb Skeugh Farm
Angram
Nr Richmond
North Yorkshire
DL11 6DT

Yorkshires first Western Trekking Centre
Open all year round

Western riding tuition, half/full day treks, or bespoke holiday packages to suit your requirements. contact Django on 01748-886682. mobile 07813-715120
for further details or view the website at

www.swaledaleponies.com

Brian Campbell

Painter and Decorator

All Work Guaranteed

Obligation Free Estimates

No Job Too Small

Phone 01748 880143

Email catcam@swaledale.org

SCHOOL OF THEATRE DANCE LTD

JANET SEYMOUR LRAD

**REGISTERED TEACHER OF THE
ROYAL ACADEMY OF DANCE**

TEL: 01748 884 189 or 884 677

BALLET from 3 years

TAP and MODERN from 5 years

CLASSES AT REETH SCHOOL

Run Monday to Thursday

From 3.45pm



FRIENDLY LOCAL SERVICE SINCE 1922



**For all your oil requirements for homes,
business and agriculture**

Supporting the community of Reeth

HEATING OIL – KEROSENE/ GAS OIL

SIGNALMAN - AUTOMATIC OIL MONITORING

BAYFORD PAYMENT PLAN

TANKS & BOILER SERVICING

CALL THE SALES TEAM NOW ON

01609 771 771

Order online: www.bayford.co.uk

REETH BAKERY

Silver Street, Reeth.

Swaledale's only real working bakery where virtually everything is handmade on the premises. Free Range eggs, local butter, milk, and many other quality and organic ingredients used.

Tea Room and Bakery open every day throughout the summer.

Also available are Handmade Cakes, Biscuits, Speciality Organic Bread, freshly cooked pies and pasties, Swaledale and Wensleydale cheeses.

Fresh sandwiches made to order.

Orders welcome.

For mail order please

Tel. 01748/884735 or 884500

or Email : jhc@reethbakery.co.uk

Charming old cottage in the centre of Reeth well placed for all village amenities. Open fire and background heating, fully fitted kitchen, dishwasher, fridge/freezer etc. Two bathrooms, 3 double bedrooms and an attic play area/fourth bedroom with two single beds and cot. The property enjoys private car parking and has a secure rear garden area with patio table and chairs. Bed linen and towels are provided and dogs are welcome. For further details tel. Doris on 01642 866628



Grinton, Richmond

DL11 6HH

Tel.01748 884224

**Traditional old coaching inn
serving quality food all day,
every day.**

**Restaurant with extensive a`la
carte menu, award winning ales
& fine wines.**

**Recommended in 'The Good
Pub' & 'Good Beer' guides.**

REETH GARAGE Ltd.

Arkengarthdale Road,
REETH, Richmond North
Yorkshire. DL11 6QT

**PETROL & DIESEL
FUEL STATION
AWARD WINNING
FORECOURT SHOP
MOT TEST STATION
REPAIRS AND SERVICING**



**FROM BRITAIN'S LEADING
MANUFACTURER
LIVESTOCK, FLAT BED,
HUNTER HORSEBOX,
TIPPING, BOX VAN,
GENERAL DUTY PLANT
CAR TRANSPORTER, PICK UP
CANOPIES, UNBRAKED AND BRAKED
SINGLE, TWIN, TRIPLE AXLE
FROM £500 TO £5000
IFOR WILLIAMS HAS A TRAILER TO DO
A JOB FOR YOU
USED TRAILERS AVAILABLE**

Opening hours
Mon - Fri 8am - 6pm Sat. 8am - 5pm
Sundays closed

**TEL. 01748 - 884243
EST. OVER 60 YEARS**

D. J. OLNEY
***Painter and Deco-
rator***
***Interior &
Exterior***
call

**01748 884065 or
07 801 026 006**

**All items for the Gazette
may be left at
REETH POST OFFICE**

R.W. STONES
PLANT & AGRICULTURAL HIRE

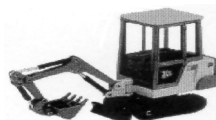
- 360° Excavator Hire
- Groundworks/Site preparation



**ROUND BALING
SERVICES
HAY STRAW SILAGE**

BOBCAT HIRE

**01748 884360
01748 884718
07974 406647**



Geoff Braithwaite

**Building Maintenance
Painting & Decorating
Gardening**

**All work considered
Chapel House, Muker
Tel. 01748 886822
Mob. 07891 063546**

**The Gazette would welcome drawings
of local interest for the cover.
Please send to the editor.**

SWALEDALE CATERERS

Any event catered for.
All home cooked food.
No problem, we travel.
Waitresses provided, or, if preferred, we
can just deliver food to your door.
Lisa Porter on 01748 886434

Cosy Holiday Cottage for TWO

Peaceful location with panoramic
views of Arkengarthdale.
Ideal for walking or just relaxing.
Tel. Shirley Gale 01748 884779

SEPTMEBR DEADLINE AUGUST 15TH.

LOW FAGGERGILL COTTAGE

Cosy holiday cottage on a Dales 'working'
hill farm with breathtaking views of
Arkengarthdale - Sleeps two.
Ideal base for walking, biking and touring
the Dales or simply enjoying a quiet time.

Mrs Gladys Atkinson

Low Faggergill Cottage, Arkengarthdale,
Richmond, North Yorkshire. DL11 6RS
Tel. 01748 - 884550

Gardening Services

**Mowing, weeding, sowing,
borders, pots and baskets
Please call Amanda on
01748 884311
or 07729 164984**



Holiday Cottage in Muker Village Wanted

**A person(s) to provide a Saturday Changeover service for a cottage with 2 x double and
1 x single bedrooms.**

The service to include: Laundry, cleaning and key holding.

An excellent rate per changeover is available.

**For more details and to discuss the opportunity please call
Richard & Gill on 01926 624173**

Langthwaite - Arkengarthdale

RED LION INN

Free House – Real Ales – Bar Snacks
Books & Maps
Tel. 01748 884218

TREVOR J. HIRD

ELECTRICAL CONTRACTOR

No job too small - - **FREE** estimates
Reduced rates for Senior citizens
Telephone 01748 884544

STUBBS ELECTRICAL LTD
ELECTRICAL CONTRACTORS

For all your Domestic &
Commercial Requirements

Rewires, Security Lighting,
Showers, Storage Heaters,
Inspections & Testing &
Portable Appliance Testing.

Tel: 01748 822907

Fax: 01748 822345

e:mail -

stephen@stubbselectrical.co.uk

FREE ESTIMATES**NORMAN F. BROWN****CHARTERED SURVEYORS & ESTATE AGENTS**

SALES - LETTINGS - MANAGEMENT
FREE 'NO OBLIGATION' MARKET APPRAISAL
AVAILABLE UPON REQUEST

14 Queens Road, Richmond, North Yorkshire,
DL10 4AG

Tel: (01748) 822473/822967www.normanfbrown.co.uk**THERE IS ONLY ONE
WHITE HOUSE**

ANVIL SQUARE, REETH
TEL : 01748 884763

**CLOCK WORKS**

Clocks & Barometers
Repaired, Cleaned,
Serviced & Restored

Ian Whitworth

Dales Centre

Reeth, Swaledale
North Yorkshire. DL11 6SP

Tel: 01748 884088

Member British Watch & Clock
Makers Guild

DAVID E.LLOYD

**Chartered
Builder
The Gables
Healaugh
Richmond**

Tel. 01748 - 884315**M. GUY - PLUMBING**

For all your
plumbing requirements
AGA'S & RAYBURN'S
SERVICED
Tel: 01748 - 825640

**IAN HEUGH
AUTO
ENGINEER**

Hillcrest, Harmby

**Your local
'Scrap Metal Merchants'**

**Cars and all scrap metals
wanted.**

Give us a call on**01969 622284****RESLEK SERVICES**

Repairs to all makes of washing machines,
fridges, freezers, cookers, microwave ovens, etc.

- ALL WORK GUARANTEED -**01748 818332 or 07740 986688**