

REETH & DISTRICT GAZETTE

ISSUE NO. 146

SEPTEMBER 2007



**YOUR LOCAL NEWS MAGAZINE
for the TWO DALES**

**This month's issue contains results from
Reeth Sports and Reeth Show, local
information and much more.**

PRICELESS



EDITORIAL

Hi all, thanks for reading. First of all a big apology to all those who have been trying to contact us by phone for the last six weeks or so, but I am sorry there was an underground fault and the phones were very intermittent. 88611 is still a little 'dicky'. I hope it wasn't too inconvenient and that we haven't missed any ones material. I had the very great honour of being asked to judge at Reeth Show this year, and I was delighted to see so many exhibits (132!) in the classes I had to judge. All of an extremely high standard and it was a very difficult decision. But I would like to thank everyone for putting in entries, because it gives a great deal of pleasure to people going around looking at them, and the exhibition tents really help to make the show. It also shows the visitors what a hugely talented bunch we are in the Two Dales. Well done everyone, and thanks also to the Reeth Show Secretary and Committee for organising a great show this year, (in spite of the dreaded F & M.). Walking around I found it very well organised. Well done. Good luck to those in Muker Show and we hope its a good day. This next weekend is the Christian Heritage Weekend when most of our Churches and Chapels are open. Do visit, try and support the two concerts and the Harvest Festival Services that are on during the Heritage Weekend. Call in at your local church and take a moment to reflect what our local heritage means to us.

GML

THE TOUCH OF THE MASTER'S HAND

Twos battered and scarred and the
auctioneer

Thought it scarcely worth his while,
To waste much time on the old violin
But held it up with a smile.

"What am I bidden good folks" he cried,
"Who'll start the bidding for me?
A guinea, a guinea, then two, only two?
Two guineas, and who'll make it three?
Three guineas once, Three guineas twice,
Going for three?"
But NO!

From the room far back a grey haired man
Came forward and picked up the bow,
Then wiping the dust from the old violin
And tightening the loose strings.
He played a melody pure and sweet,
As a carolling angel sings.

The music ceased and the auctioneer
In a voice that was quiet and low,
Said "What am I bid for the old violin?"
And then held it up with the bow.
"A thousand guineas, and who'll make it two,
Three thousand once, three thousand twice;
And going and gone" said he.

The people cheered but some of them
cried,
"We do not quite understand
What changed it's worth?"
Swift came the reply
"The touch of a master's hand."

And many a man with life out of tune,
And battered and scarred with sin,
Is auctioned cheap to a thoughtless crowd
Much like the old violin.

A "mess of pottage," A glass of wine.
A game, and he travels on.
He is "going once" he's "going twice,"
He's "going" and almost "gone;"

But the Master comes and the foolish crowd
Can never quite understand,
The worth of a soul and the change that's
wrought,
By the touch of the Master's hand.

By **Myra Brooks Welch and Ernest Longstaff**
Thanks to Gordon from Bolton for sending this one in.

REETH AND DISTRICT GAZETTE

GAZETTE MANAGEMENT TEAM

Chairman :

MALCOLM GARDNER

Forge House, Healaugh, Richmond DL11 6LD

Tel/Fax : 01748 884113

Email : sales@conveyorconsultancy.co.uk

Secretary : **Sue Alderson**

Holme View, Low Row, Richmond, DL11 6PE .

Tel : 01748 886292

Email : susana@swaledale.org

Treasurer : **David Trusson**

The Lodge, Marrick, Richmond, DL11 7LQ

Tel. : 01748 884474

Email : rdgacc@aol.com

Production Manager : **James Alderson**

Greenways, Grinton, Richmond, DL11 6HJ

Tel. : 01748 884312

Email :

jamesaldersonongreenways@hotmail.com

Distribution : **Wendy Gardner**

Forge House, Healaugh, Richmond, DL11 6LD

Tel. : 01748 884113

Subscription Secretary : **Alex Hewlett**,

The Vicarage, Reeth, Richmond, DL11

Tel. : 01748 884706

EDITOR : **George Lundberg**

Gallows Top, Low Row, Richmond, DL11 6PP

Tel. : 01748 886111/886505

Tel/Fax : 01748 886111

Email : GML1@gallowstop.fsnet.co.uk

REETH & DISTRICT GAZETTE

No material may be reproduced in whole or in part without permission. Whilst every care is taken, the publishers cannot be held legally responsible for any errors or opinions in Articles, Listings or Advertisements.

**Printed and Published by the
Reeth & District Gazette.**

**c/o THE EDITOR
George M. Lundberg
Gallows Top
Low Row
Richmond**

North Yorkshire. DL11 6PP

Tel/Fax : 01748 886111 or Tel. 886505

Email: GML1@gallowstop.fsnet.co.uk

"Gazette" - ADVERTISING

To ensure prompt attention for new adverts, setting up, changes to current advert runs, advert rates and account enquiries, please contact: **The EDITOR** at above address.

All articles can be left at :

REETH POST OFFICE

GAZETTE DEADLINES

In order that we can distribute the Gazette on the first of each month, it is necessary to have a Deadline date. The Deadline Dates for the next few months are as follows :

October	September 15th
November	October 15th
December	November 10th

PLEASE NOTE

We cannot guarantee any entry not submitted by the deadline.

LARGE PRINT

COPIES OF THE GAZETTE

We can now offer large print copies of the Gazette. These are issued free of charge, but are printed on special request only. Please inform the editor should you require this service.

A years subscription to the Reeth and District gazette makes an excellent present. To subscribe please contact our subscription secretary.

Cover photograph :

'The President Takes a Turn'

CHURCH SERVICES in Swaledale & Arkengarthdale

Sunday 2nd September

- 10.30am St. Mary's Muker
*United Parish Eucharist followed by
 a Bring and Share Lunch in Muker
 Village Hall*
 Low Row URC
 Reeth Methodist
- 11.00am St. Edmund's, Marske
Family Service
 Reeth Evangelical Congregational
- 6.30pm Arkengarthdale Methodist
 Gunnerside Methodist
 Reeth Evangelical Congregational

Sunday 16th. September

- 9.15am St. Mary's, Muker
Holy Communion BCP
- 10.30am Low URC
 Reeth Methodist
- 11.00am Holy Trinity, Low Row
Eucharist
 St. Edmund's Marske
 Reeth Evangelical Congregational
- 6.30pm St. Mary's Arkengarthdale
Evensong BCP
 Arkengarthdale Methodist
Service at Richmond
 Gunnerside Methodist
Service at Richmond
 Reeth Evangelical Congregational

Friday 28th September

- 7.00pm St. Michael's Downholme
Harvest Festival

Sunday 30th September

- 10.30am Low Row URC
 Reeth Methodist
Harvest Festival
 St. Marys Arkengarthdale
United Parish Eucharist
- 11.00am St. Edmund's Marske
 Reeth Evangelical Congregational
- 2.00pm Keld URC
Harvest Festival
- 6.30pm Gunnerside Methodist
 Reeth Evangelical Congregational

Sunday 9th September

- 9.30am St. Andrew's, Grinton
Harvest Festival
 St. Michael's, Downholme
Holy Communion
- 10.30am Low Row URC
 Reeth Methodist
- 11.00am St. Edmund's Marske
Morning Service
 Reeth Evangelical Congregational
- 11.15am St. Mary's Arkengarthdale
Holy Communion BCP
- 2.00pm Keld URC
- 6.00pm St. Mary's Muker
Family Service
- 6.30pm Arkengarthdale Methodist
Harvest Festival
 Gunnerside Methodist
 Reeth Evangelical Congregational

Sunday 23rd. September

- 8.00am Holy Trinity, Low Row
Holy Communion BCP
- 9.30am St. Andrew's, Grinton
Eucharist
 St. Michael's, Downholme
Holy Communion
- 10.30am Low Row URC
Holy Communion
 Reeth Methodist
- 11.00am St. Edmund's Marske
 Reeth Evangelical Congregational
- 11.15 St. Mary's, Arkengarthdale
Harvest Festival
- 2.00pm Keld URC
- 6.30pm Arkengarthdale Methodist
 Gunnerside Methodist
 Reeth Evangelical Congregational

Religious Society of Friends (Quakers)

Meet at the Friends Meeting House in
 Leyburn, Bainbridge and Countersett. For
 details of regular weekly services and any
 further information please telephone
 Peter Neale 01969 625470

REETH AND DISTRICT GAZETTE

Christian Aid Group

A sincere thank you to all who supported and helped with the Bric-a-brac Stall on Reeth Green on July 27th. The money raised was £245.07 which was a splendid effort.

Pauline Oldershaw Secretary - Upper Swaledale & Arkengarthdale Christian Aid Committee

St. Mary's, Arkengarthdale

Is truly grateful for the wonderful support at Spion Kop on 4th. August which helped us raise more than £1,000 towards essential repairs to our windows. This is just the beginning of our fund-raising, so we hope you will support our forthcoming events too.

Heritage Open Days 2007 Sept. 6th to 9th

'Make A Joyful Noise' Music in the Church

The Two Dales Christian Heritage Project Ltd offers its annual weekend featuring open churches, displays and musical items. The theme is inspired in part by the 300th anniversary of the birth of Charles Wesley (author of thousands of hymns including the well-loved 'Love Divine' and 'Hark the Herald Angels Sing') and the 150th of Edward Elgar, ('The Dream of Gerontius', 'Enigma Variations'). Light refreshments will be available at some of the venues. Further details from Rev Jane Harris from 3rd September on (01748) 884336.

St Andrew's, Grinton open all four days.

Harvest Festival on Sunday 9th. September at 9.30pm with the Parish Choir.

Reeth Methodist open all four days with family history internet access on Friday*

Arkengarthdale Methodist see Church notice board for more details.

Harvest Festival on Sunday 9th Sept. at 6.30pm With the Parish Choir.

St Mary's, Arkengarthdale open all four days

10am-4pm

Concert on Friday 7th. September with Leyburn Band and the Parish Choir.

Holy Trinity, Low Row open all four days - flowers and music on Saturday

Low Row URC see Church notice board for details

Gunnerside Methodist open 10am-4pm Thursday to Sunday with an Evening of Sankey music led by Gunnerside Choir on Saturday at 7.30pm

St Mary's, Muker open all four days

Keld URC open all four days

*subject to availability

Everyone welcome at all churches and events.

St. Mary's, Arkengarthdale

There will be a concert in St. Mary's on Friday 7th September at 7.30pm. The concert, given by Leyburn Band and the Swaledale with Arkengarthdale Parish Choir will include in the programme of popular melodies the traditional Last Night of the Proms element. The concert is part of the Christian Heritage weekend theme 'Make A Joyful Noise'. All proceeds will be shared between St. Mary's Church and Arkengarthdale Methodist Chapel. Tickets to include refreshments will be on sale at the door priced £4 adults, Secondary aged children £2 and under 11 free.

On Saturday September 22nd. The York Philharmonic Male Voice Choir will be giving a concert in aid of St. Mary's Church funds. The concert will commence at 7pm and tickets available at the door will be £5 for adults, £2.50 for children secondary school age and under 11's free.

Dovetail Interiors

The one shop you must
visit in the Dales

See our New Solid Oak Bedroom Range

Designer Jewellery, Lighting, Mirrors, Gifts
Fireplaces, Garden Artifacts & Teak Furniture
Made to Measure High Quality Oak, Hardwood
Painted & Reclaimed Pine Furniture etc
Why travel miles we are on your doorstep

2 Bridge St, BEDALE Tel 01677 426464 Dales Delivery Service
web www.dovetailinteriors.com 5% discount with this ad

THE BURGOYNE HOTEL

We are seeking reliable staff to join our team and to work in the housekeeping and dining room departments of our busy upmarket Hotel. Would involve some evenings and weekend work. Excellent rates of pay and conditions. For further details please call 01748 884292

ANDY MALTON LTD

General Building Contractor
Plastering / Roofing / Dry lining/
Ceiling Work / Pointing / Guttering
MOST BUILDING REPAIR WORK
CARRIED OUT
(Estimates Free)

NO JOB TOO SMALL

Tel : 01748 - 884621

Email : amalton56@fsmail.net

REETH GARAGE LTD.

ARKENGARHTDALE ROAD, REETH, RICHMOND,
NORTH YORKSHIRE. DL11 6QT

WINTER JACKET SALE

Save up to 20%

WOMEN'S ISLANDER AND MEN'S HUNTER
PEACHED MICROFIBRE
FULLY WATER AND WINDPROOF
TOP QUALITY AND LOW PRICE

WELLY OFFER

HOGS BRAEMAR JUST LIKE HUNTER
BUT HALF THE PRICE
GREEN OR BLUE

NEW STOCK MUCKBOOT TACK
IDEAL EQUESTRIAN OR LEISURE
LIGHTWEIGHT DURABLE INSULATED
4 GREAT COLOURS

Purple	Dusky Pink
Powder Blue	Black


BORDER from £12.99

DUNLOP PUROFORT, NORA DOLOMITE

ALL IN STOCK

TEL. 01748 - 884243

SILVER LIGHTNING



graphic design
logo design
websites
advertising marketing
brand identities
viral communications
brochures
packaging

01748 884409

*A Warm & Friendly Service Awaits
You at....*

**THE
'TOP SHOP'**

*Reeth's Hairdressing Salon
offering a high standard of
UNISEX Hairdressing*

GIFT VOUCHERS
at a price to suit you
Various prices.

Closing Times
All day Wednesday
Half Day Saturday

The 'TOP SHOP'
Arkengarthdale Road, Reeth
(Opposite Reeth Garage)

TEL. 01748 884627

The Avatar Course



Avatar® is the
answer.....

What is your question?
Live your life deliberately.

Call me, Penn Shewring
on 01748 886099

Penn.shewring@virgin.net.

Avatar® is a registered trademark of Stars
Edge Inc © All Rights Reserved

Reeth & District Gazette.

**Notice of An Extraordinary
General Meeting.**

To consider and if approved,
implement a change in the
Constitution thereby converting
the Gazette into a Charity.
The meeting will be held on the
1st of October 2007 at 7.45 pm
at Grinton Village Institute.

WENSLEYDALE WINING & DINING

Come along and join us:
Dining Out, Going to the Theatre
Walking, Weekend Breaks,
Special Events
Tel. 01748 884503
01969 667628

**TO LET - Long or short term. I bedroom
traditional cottage in Langthwaite tel. 01748
884007 or 01524 811505**

Reeth Parish Council Report

Metcalfe's Farm. Discussion on the application for Metcalfe's farm had been referred to the next meeting of the National Park Planning Committee following a number of comments from residents and objections from neighbours to the impact of a new extension and walls on their properties. Members were advised that some objections involved legal matters which could not be dealt with by the Planning Committee but would have to be dealt with as a separate matter. The letters of objection would be copied to all parish council representatives on the Committee and a site meeting would be requested to settle apparent discrepancies between various sets of plans and applications. **Green** The small piece of fencing on the green near Chetwynd would be removed by the householder. It was confirmed that this piece of land did in fact belong to the parish and would in future be included for cutting along with the green. **Highways** The Highways Department reported that arrangements had been made for the roadside wall between Reeth and Healaugh to be inspected and some landowners had been requested to make repairs although there had been little response so far. Various other works which had been reported around the parish would be inspected and dealt with. The potholes on Back lane which had last been patched up more than 20 years ago would also be reported. **Seats** Members of the Doncaster Rambling Club were concerned about the state of a seat near Hudson House which had been commissioned in memory of two of their former members. It was confirmed that the seat was not in a dangerous state but that maintenance had not been possible so far this year due to the poor weather. 01/09/2007

Trees Notification was received of permission to fell trees at Hill Top and East Arkle House, Reeth. Arrangements will be made to clear trees in the pinfold and on waste land near Reeth bridge later in the year, along with the dead tree on the bank opposite the garage. **New Footpath** Clarification would be sought of who was responsible for repairs and maintenance of the retaining wall beside the new footpath alongside the green as the County Council did not believe it was their responsibility. **Fair** Permission was granted for the funfair to set up on the green in August. **Sports** A letter of thanks was received from the Sports Association for the parish council's donation towards the marquee and portable toilet. A representative was requested to present cups at this year's sports on 11 August and Coun Kendall was nominated to do this. **Parking** An unlicensed vehicle which had been parked for some time on Reeth green would be reported to the appropriate authority. **Drains** Blocked drains on Silver Street which had been overflowing in recent bad weather would be reported to the Highways Department for clearing out. **Motor Rallies** Notification was received of three rallies which would pass through the parish in September and November. The date of the next meeting is September 24th.

RAY CALVERT, Low Row, would like to thank family and friends for their good wishes and donations to Great North Ambulance on the occasion of his 50th birthday. A total of £400 was raised

Love Walking for the British Heart Foundation

Geoff Robinson, a local Walk Co-ordinator for the British Heart Foundation, has decided to help raise money for the charity by organising an 8 mile, sponsored walk starting and finishing in Reeth on Saturday 29 September 2007. The walk is part of the charities new initiative - Love Walking, which encourages as many people as possible to organise or take part in a local sponsored walk throughout the month of September.

The walk will start at 10.30am and take the form of a circular route which will start and end at Hudson House Community Centre on the Village Green in Reeth. The route will take walkers through the village of Healaugh, along the river to Grinton, on to Marrick Priory and back to High Fremington before ending in Reeth. The walk is open to people of all ages and dogs are also welcome on the day. People are also encouraged to bring a packed lunch as the walk will take place over lunch time.

Geoff Robinson said "I am a big supporter of the British Heart Foundation and really enjoy organising sponsored walks in my local area. It's great to use my local knowledge and love of walking to benefit the lives of those living with heart disease and its also a really simple way for people to get fit. I am hoping as many people as possible will take part in the walk and raise much needed funds for such a worthwhile charity."

Lucy Watson, Fundraising and Volunteer Manager for the British Heart Foundation said, "It is always great to work with such dedicated people like Geoff, who want to use their time to raise money for the British Heart Foundation. I would like to thank Geoff both personally and on behalf of the charity for choosing to support us during our Love Walking initiative and I hope the day is a huge success."

This September the British Heart Foundation want to get as many people walking as possible and raising funds to help beat heart disease. Walking helps you take care of your own heart health and the money you raise will support the life-saving work of the British Heart Foundation. If you are interested in taking part in the walk or would like more information, please contact Geoff Robinson on 01748 884786 or Lucy Watson on 07802 755798.

Line Dancing Time Again!

Line Dancing resumes on Monday, 1st October, 8 pm, at Gunnerside Village Hall. Everyone welcome, young or old, new or experienced! For more details, ring Judith on 01748 886366.

"A Craft and Gift Fair" will be held on Saturday and Sunday 13th and 14th of October and Saturday and Sunday 27th and 28th October in Gunnerside Village Hall in aid of Leukemia Research Fund. There will be Handmade Jewellery and cards, everything for making your own cards. Mineral specimens and second hand books.



DORANT



BRIDGE GARAGE
REETH
 01748 884245

NEWGATE GARAGE
BARNARD CASTLE
 01833 630620

SELLING YOUR CAR?
DON'T LIKE PEOPLE CALLING?
DORANT CAN DISPLAY AND SELL YOUR
CAR FOR YOU
RING BRIDGE GARAGE FOR DETAILS

**UPPER WENSLEYDALE &
 SWALEDALE**

WINDOW CLEANING

& Odd Job Services - Competitive Rates

JOINERY, PAINTING,

SASH WINDOWS RE -CORDED

MAINTENANCE & GARDEN

CONTRACTS UNDERTAKEN

City & Guilds in Carpentry & Joinery.

Tel.01969 667873

WINTER DISCOUNTS APPLY

HILLARY HOUSE

REETH

Family run Bed & Breakfast

One Double &

One Twin Room

Tea & Coffee making facilities

Colour TV

TEL. 01748 884171



GHYLLFOOT

TEAROOM

AND

PENNY

FARTHING

RESTAURANT

(Licensed)

Gunnerside

OPEN DAILY 10.30 - 5PM

(Closed Tuesday)

BISTRO or RESTAURANT

Wed - Sat evenings

Traditional Sunday Lunches

Booking recommended

Tel. 01748 886239

REETH AND DISTRICT GAZETTE

We seem to have been raising money for a long time now and I'm sure you are all wondering what is happening with the pavilion development.

We have now submitted a planning application to the National Parks and we hope to receive a decision sometime in July. There have been several changes to the plans prior to submittal both from recommendations by the FA and also the Environment Agency. The current application is for the new pavilion and also for a car parking area and the MUGA (multi use games area). We have had an initial meeting with the Football Association which does sound promising for funding, they are likely to be our main funder, but they have requested that we have a pitch survey to look at the drainage and also levelling the current playing surface. A consultant from the Institute of Groundsmanship will be visiting us in the next couple of weeks to carry out this survey. Rather disappointingly the FA do not want to fund the MUGA so we are having to look for funding elsewhere and are treating this as a separate project running alongside the pavilion. Once plans are approved we will be going out for tenders and then we will really know what the project will cost.

Derek Pollard is working hard to produce a management plan which we can submit with grant applications to convince those with the money that our community is worth investing their money in. Unfortunately for Derek it is a bit of a moving target and we are already on the third draft, (thanks to Keith for being Derek's unofficial secretary).

Could we thank you all for supporting our fund raising efforts we really do appreciate the support that you have all shown us. We will have to keep on fund raising but we are hoping to be able to start building work in the spring of next year depending if our funding applications are successful. We have just heard that another local project in the dales has been declined by Sport England. (The Olympics may be a great thing for the economy, especially in the south, but it looks like we may suffer for it here in the north).

If anyone would like to make a donation to the project please send it to David Williams, Chapel Lodge, Langthwaite, Richmond, North Yorkshire. Cheques should be made payable to Reeth & District Athletic Club Development Fund.

Reeth Surgery

Flu Vaccination Campaign 2007

(For residents over 65
and those eligible for medical reasons
in Swaledale and Arkengarthdale)

Friday 5th October 2007

12noon to 4pm

no appointment necessary


To be held at

Quaker Close Flats, Reeth

Tea and coffee will be available

Proceeds in aid of Quaker Close Flats

**We are pleased to see that
Marion Thompson after her
recent operation, is now out and
about, driving again and back on
the Gazette Distribution Team.**



Home Plumbing & Heating Services
Reliable & Professional Service

128040
Natural Gas & L.P.G.

- All types of heating systems designed and installed including under-floor heating.
- Gas fires including radiators installed.
- Service and Repairs carried out on all Gas appliances.
- Landlord safety certificates.

Oil Installers

- Oil heating systems designed and installed including new upgrades.
- Oil tank installations carried out.
- New Energy efficient Boilers
- Service and Repairs.

CITB
Regd.
Un-vented
Hot water
Installer

- Complete Plumbing service offered including:
Bathroom suites • New Showers
Hot water cylinders • Immersion heaters
Washing machines • Water storage tanks
- Un-vented hot water cylinders installed.
- All Repairs carried out.

Tel/Fax 01969 667 958
Mobile 07958 587 198

RED WEB

**A locally based
web design company,
providing professional,
stylish and affordable
websites.**

We offer a wide range of creative solutions

- ◆ Full website design service
- ◆ Manage & update existing websites
- ◆ Advice on every aspect of the internet
- ◆ Multimedia production

To find out more, phone John on

01748 886545

or visit our website

www.redweb.red-film.co.uk

Cambridge House

Countryside Guest House

Arkengarthdale Road

Reeth

North Yorkshire

DL11 6QX

Four Star Silver Award

**Renovated to a high standard
All en-suite rooms have
spectacular views**

Warm welcome assured

Special long stay / winter rates

Please call in or phone Les or

Sandra for a brochure

01748 884633

www.cambridge-house-reeth.co.uk

PLAY WORKERS REQUIRED

for

TWO DALES AFTER SCHOOL CLUB

Starting September 2007

at

REETH MEMORIAL HALL

Mon - Thurs, 3.30 - 5.30pm

NVQ II qualification preferable

Enquiries: Moira Manners

01748 884184

RAYMOND SHURETY

Painting, Decorating,

Sash Window repairs, Glazier

PLEASE CALL FOR FREE

ESTIMATE/ADVICE

01748 886172

07855 454952

REETH AND DISTRICT GAZETTE

Thea's Cottage, Satron

www.theas-cottage.com

Delightful family cottage, sleeps 6 in three bedrooms, lounge & dining rooms with open fires, garden. Lovely views across the Dale. Dogs welcome.

Tel: 01525 385370 for details or

E-mail: ngh@satron.fsnet.co.uk

FAT BURNING



FLEXIBILITY

Complete Body Workout



Sundays 10.30 – 12.00

at Reeth Memorial Hall

All levels welcome

£4.00 per session

all proceeds going to The Pavilion Fund



CARDIO VASCULAR

For more details

call Janet on 01748 884323

MUSCLE TONING

TRADITIONAL HOLIDAY COTTAGES

To let in
HEALAUGH

A cosy, luxury,
two bed-roomed,
two bath-roomed
cottage, with garden,
in quiet location,
having delightful views
over Swaledale.

Also one & four bedroomed cottages available

4 star ETC. Non smoking

Please tel. 01748 884526

www.swaledale-cottages.co.uk

HOLIDAY ACCOMODATION

ARKENGARTHDALE

Riverside, 2 x doubles, grand piano.

CORNWALL

David Bellamy Gold Award, 2 & 3 bedroom cottages. Tennis, Gymn, Plunge Pool, Sauna and more.

FLORIDA

Cape Coral, 160 miles south of Disney. 3 double bedrooms, pool, boat dock, Santbel, Captiva 15mins.

Contact: 07940 012198,

01748 884844 ,

01326 214958

The Old Dairy

Bed & Breakfast

High quality
guest accommodation
Low Row, Swaledale

* * * *

Tel: 01748 886215

theolddairy@swaledale.org

Neil Wilmore *Est 1988*
HND Landscape Design & Management
info@neilwilmore.co.uk
01969 624555

**Specialist landscape
services**

drystone walling
hedge planting & laying
tree planting
grass seeding & turfing



www.neilwilmore.co.uk

YORK PHILHARMONIC MALE VOICE CHOIR

This very popular Male Voice Choir will give a concert on Saturday 22nd. September in St. Mary's Church, Arkengarthdale. The concert will commence at 7pm and tickets are available at the door priced £5 adults, secondary aged children £2 and under 11's free. All proceeds to St. Mary's Church funds.

.Friends of the Swaledale Museum

The Friends of the Museum, formed only two years ago, continues to expand, both in membership and in the range of our activities. Our primary purpose is of course to support the development of the Museum, and to enable us to do this we have developed an active programme of walks, talks and social events, mostly featuring local people.

The Friends "Heritage Walks" focus on industrial and landscape archaeology; so far we have explored Gunnerside Gill with Roger Pettican, Slei Gill with Alan Mills and around Langthwaite with Neil Dyson. Our recent talks in the Museum have been extremely interesting and well-attended. In June, Janet Bishop spoke about the poor of Arkengarthdale in the 18th century, whilst in July David Morris talked about the pioneering Dales men and women who left this area to create new lives in the New World and in August Barbara Buckingham reminisced on her dales farming childhood. Recent social events included a Strawberry Tea and concert performed by the Reeth Artyfacts (stars of last Christmas' panto!) in June, and in July the HARP Singers gave an evening concert in the Museum

Forthcoming events in September:

Monday 10th Alan Mills will lead a walk exploring Swaledale's prehistory; meet 2pm, Museum; also on the same day ...

Monday 10th Archaeologist Tim Laurie will develop the theme of Swaledale & Arkendale's Landscape History; 7.30pm in the Museum

Wednesday 19th - Linda Turnbull of the

North Yorkshire County Records Office will talk about land records for local historians; 2pm in the Museum

Monday 24th Neil Dyson will lead a walk exploring the lead mining remains around Langthwaite; meet in Langthwaite public car park at 2pm

Saturday 29th A Country Dance, 7.30pm in the Reeth Memorial Hall, featuring Reeth's own ceilidh band 'Sunday Suits and Muddy Boots'

Walks are free (donations welcome!); talks are £2 for Friends, £3 otherwise and the Country Dance is £6, including a ploughman's supper.

For further information about these events or joining the Friends contact Alan or Judith Mills (884938), Helen Bainbridge (884118), Tracy Little (884759) or call in at the Museum.

'Bedale Archaeology & History Society

presents an illustrated talk on Recent excavations at Cayton Bay by field archaeologist Oliver Cooper on Tuesday 4 September at 7.30 pm in Bedale Hall. Entry is free to members and non-members are welcome (£2 on the door - under 16s free).'

Thank you.

Allison and Robert Stubbs would like to thank family friends, relatives and volunteers for their great help and support with the afternoon teas that were held at Scar View, Langthwaite on the 19th. August The monies raised was £515 for the Two Dales Junior Football Club

REETH AND DISTRICT GAZETTE

SEPTEMBER ON THE WENSLEYDALE RAILWAY

A daily DMU (diesel multiple unit) service runs every day from September 3-30, with Guided Walks from stations each Thursday. There are four special events during the month for which advance booking is essential. The September 1 event to Ribbleshead was fully booked by mid-August. As we go to press, there are still tickets for the Lancashire Hot-Pot Walk and lunch (Sat Sept 8), the excursion to Hardraw Brass Band Festival (Sun Sept 9), and for both days of the Dales Harvest week-end in Hawes (Sat and Sun Sept 22-23). These events all focus on using the train (though with coach transfer onwards from Redmire at the present time) to reach Upper Wensleydale. September 10 is an important date, as it is the last date for claiming the Early Booking Discount for *Day Out With Thomas* on Sat and Sun, October 20 and 21. To book tickets for any of these events, phone Leeming Bar station on 08454 50 54 74.

Ruth Annison

RETURN OF FESTIVAL FAVOURITES

Expect an evening of exciting music and superlative performances when Kosmos play at Grinton in October. Kosmos, who are inspired by Jewish, Gypsy, Balkan and contemporary music, had their baptism of fire at the Hydra Rebetika Festival, Greece in 2005. Kosmos are Harriet Mackenzie (violin), Meg Hamilton (violin) and Laura Anstee (cello). Harriet thrilled the audience at a sell-out concert at Keld during this year's Swaledale Festival. The trio will be joined by Milos Milivojevic on accordion and Jonny Gee on bass. Jonny

was the bassist in Zum who wowed audiences at Grinton during the 2003 and 2005 Festivals. "Everyone should make the effort to hear them; amongst the brightest rising stars of musical Britain, Kosmos are truly exceptional" FE News. The concert is at St. Andrews Church, Grinton on Friday 5 October, at 8.00pm. Tickets are £10 (£5 students and children) and will be available from the Swaledale Festival Office from the beginning of September, tel 01748 880019

Thank you to all the many women, and a few brave men, who have come along to my Sunday exercise classes at the Memorial Hall and the Tuesday evening circuit training that we've been doing on the football pitch. Not only are you feeling fitter, I hope, but a total of £273.50 (as at July) has been raised towards the Pavilion fund. Anyone interested in joining either class, please contact Janet Stocks on 884323.

The Handyman Can!

The Handyman Can turn his hand to most jobs, large or small!

- Quality work at competitive rates.
- No obligation quotes.

Holiday home maintenance.
Dry-stone walling & Stone facing
Bathroom/Kitchen fitting.
Internal stud wall construction.
Plastering.
Basic plumbing.
Garden landscape.
Design & Eco solutions.

And much more: any job considered!

Richard Moulson

01748 886327

info@the-handyman-can.co.uk

**LOW ROW****Telephone (01748) 886233**Website: www.pbinn.co.ukE-mail: info@pbinn.co.uk

9 En-suite Bedrooms
with marvellous views of
Swaledale are now available.

We are Open for Lunch and Dinner
Serving Freshly prepared locally
sourced food.

SUNDAY CARVERY

Choice of Meats, Vegetarian & Fish
Option

*£8.95 per person**Booking Advisable***What's On In Reeth Memorial Hall?**

Friday 21st September SteamRadio - an excellent local band with a wealth of experience in Irish and traditional music. Members have played with the Vin Garbutt Band, the O'Boyle Band, the Champion String Band, The Rub and Ceilidh bands. Between them they will bring vocals, acoustic guitar, English Great Pipes, whistles, fiddles, keyboards, electric guitar, bass guitar, mandolin, octave mandolin, bouzouki, drums and percussion. They play reels and jigs from the four corners of the British Isles, polkas from Galicia and Brittany, hornpipes from Dorset and Donegal, two steps and waltzes from Quebec and Cape Breton - a mix of traditional numbers and their own material 'inspired by years of immersion in Celtic music'. Tickets £7 in advance, £8 on the door (half price for under 16's).

Friday 12th October - Billy 'n Bob - Bob Fox (Bob Fox & Stu Luckley, The Vin Garbutt Band, special guest on Fairport Convention tour) & Billy Mitchell (Jack the Lad, Lindisfarne) performing together and on their own - £9 in advance, £10 on the door (half price for under 16's). www.bobfoxmusic.com

Friday 19th October - Swarb's Lazarus - Dave Swarbrick (Fairport Convention, Whippersnapper) on fiddle and mandolin; Kevin Dempsey (Whippersnapper, Uiscedwr) on guitar; Maartin Allcock (Fairport Convention, Jethro Tull) on bouzar and acoustic guitar. Support by Judith Haswell - £15 in advance, £17 on the door (half price under 16's) www.swarbslazarus.com

Tickets from Reeth Post Office or contact John Little 01748 884759.

SWALEDALE MUSEUM**POETRY in PERFORMANCE DAY 2007**

READ BY Dominic Goodwin

Enjoy the words of Keats, Tennyson, Sassoon,
Owen, Coward and many more.

Saturday 8th. September

10am till 11am 'Strictly for the kids'

A fun session for 5-9 year olds

12 noon till 1pm 'The Classics'

2pm till 3pm 'Along the Swale to Modernity'

Please ring 01748 884118 for more details
and to book tickets

**Blaeberry****Cottage****Grinton, Reeth,****Swale dale****North Yorkshire**www.blaeberry.co.uk**Spacious family cottage, sleeps 5.****Ideal for walking in the dales.**

**Open fire. Stunning views. Pretty
Garden Tel. Mrs. Hudson for further**

details:**01279 654115 or****E- mail: tgh@bsc.biblio.net**

REETH AND DISTRICT GAZETTE

YOUR SWALEDALE FESTIVAL NEEDS YOU!

This year's Swaledale Festival was one of the most successful in years - and we are already planning for next year.

We need volunteer workers to assist with that planning and preparation as well as working during the Festival. There are a range of tasks involved:-

Office admin and support - part-time volunteers with excellent IT skills and expertise in Excel, Word, Publisher, databases and e-mail to assist the Festival Administrator, work with our small volunteer team and assist with the box-office on the run-up to the Festival.

Events Manager - to transport, set up and dismantle event staging and manage all the Health and Safety issues relating to Festival venues and events.

Events Technicians - to assist the Events Manager with their duties; an excellent opportunity to gain experience in this area.

Visual Arts Project Worker - to develop the Festival's Arts programme.

PR Consultant - experienced people with media contacts to work with the Festival's marketing team.

Village Ambassadors - if you have good 'people skills' you could be the Festival contact point in your village or locality

Event Stewards - we always need people to join our team of stewards who are the public face of the Festival.

If one of these volunteers roles suits you and you would like further information please contact Harriet Smithson on

01748 880018 or

harriet@swaledale-festival.org.uk.

GAZETTE DEADLINE 15TH. SEPT.

THE C.B. INN



ARKENGARThDALE

Telephone 01748 884567

www.cbinn.co.uk

info@cbinn.co.uk

Come & Enjoy outstanding fresh food in a warm and Friendly Atmosphere.

All of our 19 en-suite bedrooms have amazing views of Arkengarthdale, with Midweek and Weekend Special Breaks available.

Our 'Terrace Room' is available for the small of medium sized Dinner Party, Wedding or Conference.

For a Brochure or to Reserve a Table

Please Telephone 01748 884567

'GOOD PUB GUIDE'

INN OF THE YEAR 2006

LOOKING FOR A WINDOW CLEANER?

Then contact Will Eves'

Window Cleaning Services

REGULAR & RELIABLE

FIRST CLASS SERVICE

ALL AREAS OF THE DALES COVERED

Phone 01833-637936

or 07732987553

REETH & DISTRICT SPORTS DAY2007

The day started with the Children's Fancy Dress Parade from the centre of Reeth to the Sports Field.

The Association Cups were presented by James Kendall - John Murphy Challenge Cup for Fancy Dress - Sam Gregg. Freda Cherry Memorial Trophy for the best under 5's Fancy Dress - Sam Gregg. Black Bull Cup for Junior half mile-Adam Simpson. David Brently Challenge Cup for Quoits - Michael Roger. Burgoyne Johnson Challenge Cup for Senior half mile - Steven Bainbridge. Ed Walker & Wilson Ltd Cup for Junior Fell Race 1st local girl - Lucy Lundberg. Percy Cleminson Memorial Bowl for Junior Fell Race - Tommy Stones. Swaledale & Arkengarthdale Athletics Association Cup for Senior Fell Race - Steven Bainbridge.

Results

Fancy Dress Under 5's 1.Sam Gregg, 2.Ralph Midgely, 3.Millie Betteridge. 5-8's 1.Alana Hodgson, 2.Paige Brown, 3.Chloe McShane. 9+ 1.Lydia Sunter, 2.Marian Porter, 3 Samantha Atkinson. Group 1.Eva Midgely & Millie Wood-Weatherill, 2.George Baker & Cleo Baker, 3.Charlotte Porter & Sarah Robinson. Flat Races - Girls 3 & Under 1.Taryn Hodgson, 2.Anna Neverson, 3.Millie Clark-Cain. Boys 3 & Under 1.Trysten Brown, 2.Harvey Dearing, 3. Gideon Pealing. Boys 4-5's 1.Lewis Dearing, 2.Elliot Johnson, 3.James Metcalfe. Girls 4-5's 1.Mary Stones, 2.Millie Wood-Weatherill,

3.Paige Brown. Boys 6-8's 1.Matthew Short, 2.Daniel Johnson, 3. Jack Stones. Girls 6-8's 1.Rebecca Pealing, 2.Syd Dawson, 3.Natalie Raw. Boys 9-11's 1.Adam Simpson, 2.Rory Langdon, 3.Tommy Stones. Girls 9-11's 1.Samantha Atkinson, 2.Annie Stones, 3.Isobel Higgins. Boys 12+ 1. Steven Bainbridge, 2.Sam Hall, 3.Ben Stones. Girls 12+ 1. Lucy Lundberg, 2Livia Higgins. Slow Bicycle Race - Under 8's 1Elliot Johnson, 2.Daniel Johnson, 3.Antony Woodward. Over 8's 1. Steven Bainbridge, 2.Richard Herrlich, 3. Marian Porter. Sack Races - Girls 3 & Under 1.Anna Neverson, 2.Millie Clark-Cain. Boys 3 & Under 1. Harvey Dearing, 2.Joshua Tarwin, 3. Trysten Brown. Boys 4-5's 1.James Metcalfe, 2.William Porter, 3.Lewis Dearing. Girls 4-5's 1.Mary Stones, 2.Holly Dixon, 3.Millie Wood-Weatherill. Girls 6-8's 1.Rebecca Pealing, 2.Jerusha Pealing, 3.Jemima Langdon. Boys 6-8's 1.Matthew Short, 2.Jack Stones, 3.Daniel Johnson. Girls 9-11's 1.Marian Porter, 2.Samantha Atkinson, 3.Sarah Marsh. Boys 9-11's 1.Tommy Stones, 2.Thomas Short, 3.Arte Dawson. Girls 12+ 1.Zoe Atkinson, 2.Lucy Lundberg, 3.Charlotte Porter. Boys 12+ 1.Richard Herrlich, 2. Issac Dawson, 3.Steven Bainbridge. Egg & Spoon Races - 3 & Under 1. Trysten Brown, 2.Taryn Hodgson, 3.Gideon Pealing. 4-5's 1Mary Stones, 2.Millie Wood-Weatherill, 3.Sacha Bellwood. Girls 6-8 1.Megan Lundberg, 2.Jemima Langdon, 3. Alice Bainbridge.

REETH AND DISTRICT GAZETTE

3.Thomas Simpson. 3-Legged Race - 3 & Under 1.George Baker & Elliot Greeton, 2.Jarvis Price & Tristen Brown, 3.Anna Neverson & Taryn Hodgson. 4-5's 1.Mary Stones & Paige Brown, 2.Alana Hodgson & Sacha Bellwood, 3.Millie Wood-Weatherill & Freya Pealing. Girls 6-8's 1.Rebecca Boys 6-8's 1.Daniel Johnson, 2. Jack Stones, 3. Matthew Short. Girls 9-11's 1.Marian Porter, 2.Sarah Marsh, 3.Isobel Higgins. Boys 9-11's 1.Tommy Stones, 2.Rory Langdon, 3. Nnamdi Nwaefulu. Girls 12+ 1. Lucy Lundberg, 2.Livia Higgins, 3.Jo Langdon. Boys 12+ 1. Ben Stones, 2. Issac Dawson, Pealing & Francesca McShane, 2. Syd Dawson & Megan Lundberg, 3.Hattie Langdon & Friend. Boys 6-8's 1.Tommy Marsh & Sarah Marsh, 2.Matthew Short & Daniel Johnson, 3. Jack Stones & Antony Woodward. Boys 9-11's 1.Adam Simpson & Arte Dawson, 2.Tommy Stones & Rory Langdon, 3.Thomas Short & Matthew Short. Girls 9-11's 1 Marian Porter & Ben Stones, 2.Annie Stones & Samantha Atkinson, 3. Sarah Marsh & Lydia Sunter. Boys 12+ 1Issac Dawson & Thomas Simpson, 2.Ben Stones & Tommy Stones. Girls 12+ 1.Lucy Lundberg & Livia Higgins, 2.Chjarlotte Porter & Zoe Atkinson. Obstacle Race - 3 & Under 1.Harvey Dearing, 2.Tristen Brown 3.Anna Neverson. 4-5's 1.Mary Stones, 2.Sacha Bellwood, 3.Lewis Dearing. Boys 6-8's 1.Tommy Marsh, 2.George Morris-Jones, 3.Jack Stones. Girls 6-8's 1.Syd Dawson, 2.Natalie Raw, 3.Jerusha Pealing. Boys

9-11's 1.Tommy Stones, 2.Rory Langdon, 3.Arte Dawson. Girls 9-11's 1.Sarah Marsh, 2.Samantha Atkinson, 3.Isobel Higgins. Boys 12+ 1.Ben Stones, 2.Richard Herrlich, 3.Issac Dawson. Girls 12+ 1.Livia Higgins, 2.Lucy Lundberg, 3.Zoe Atkinson. Junior Half Mile 1.Adam Simpson, 2.Lucy Lundberg 3.Livia Higgins. Senior Half Mile 1.Steven Bainbridge, 2.Ben Stones, 3.Issac Dawson. Junior Fell Race 1.Tommy Stones 2.Rory Langdon 3.Lucy Lundberg. Senior Fell Race 1. Steven Bainbridge, 2.Ben Stones, 3.Thomas Simpson.

Guess the Number of Sweets in a jar - Paul Brown

Treasure Map - Holly Raw

Quoits - Michael Roger

Egg Throwing competition - Paul Simpson & Ian Dawson.

The Committee would like to thank all those who helped both on the day and in the preparations which ensured the day was a success. We would also like to thank everyone for their kind donations.

SMALL BUILDING WORK

All internal and external building work done.

From roofing to electrics to patios.

We're the builders who return calls, quote promptly *and* we only do one job at a time!

Phone Chris on 01969 625425

Phone Paul on 07976 811457

UPPER DALES

FAMILY HISTORY GROUP

May's speaker was Barry Harrison of the Yorkshire Vernacular Buildings Study Group which has been recording the buildings of the North Riding for the past 35 years. The meeting was held at Fremington and since Barry was concentrating particularly on buildings in Swaledale a large part of the audience immediately recognised the examples he chose. Illustrating his talk with floor plans and photographs of whole houses and architectural details, Barry showed how local housing had developed, with massive rebuilding going on from the first half of the 17th century onwards, rather later than in some neighbouring dales. Comparing some of the rebuilding with surviving wills and inventories from the period it is possible to see how this corresponded with the increasing prosperity of parts of the population.

In almost all the chosen examples it was possible to see traces of the many changes each building had undergone, with successive generations making their mark by extending and improving, adding a staircase in an external turret to reach a new storey created from a loft when slates replaced thatch for example, or turning an adjacent byre into a new parlour. Rebuilding and remodelling are not a modern phenomenon but they have left fascinating traces in the very fabric of the dales.

The June meeting was a complete contrast, with well known speaker and broadcaster John Titford battling his way through the floods from Derbyshire to

Hawes to the annual evening meeting. Taking as his subject 'Barking up the Wrong Tree' John treated the audience to a series of entertaining but very helpful examples from his own experience of how it was possible to be sidetracked into researching the wrong line of a family and strategies for dealing with this.

Examples included always considering variations in spellings of surnames from generation to generation, while at the same time being wary of confusing different generations of the same family using identical names! The importance of always checking primary sources was repeatedly emphasised, with examples proving that information given by relatives or even by the subject of the research themselves is not always reliable, even though it sometimes contains a grain of truth. A story amongst living members of one family, for example, that a relative had been born in Ireland revealed that in this case 'Ireland' was a small settlement in a parish in rural Wales.

There were many other fascinating examples and suggestions for following up clues in a variety of sources. John summed with the advice that we should never be afraid to chop down a tree, however many hours of research have gone into it, if we realise that it is not ours, and should never connect anyone into our tree until we have the proof that they belong there!

The group finished the season with a visit to Braithwaite Hall in Wensleydale. The earliest reference to Braithwaite is in 1301 when it was listed as a grange of Jervaulx Abbey.

REETH AND DISTRICT GAZETTE

Since then it has passed through many hands, including a period in the 17th century when it was owned by the City of London, and was largely remodelled in 1667. Now belonging to the National Trust it is a working farm house and B & B, which can be visited by appointment with the tenants, and boasts a fabulous oak panelled drawing room leading off a stone flagged dining hall with a fireplace you could roast an ox in. Sadly this was not on the agenda for the evening so we adjourned to the nearby Coverbridge Inn to enjoy a bar meal and another of Marion Moverley's brain stretching quizzes. The group is most grateful to Marion for organising not only this but the whole varied programme of speakers during the past year and we look forward to beginning again on 26 September with Sheila Gardner's look at "Bound for Botany Bay" at 2pm in the Key Centre, Middleham.

STRINGS WITHOUT TEARS

Lessons in all stringed instruments

Individuals and groups

Adults and children

Beginners to advanced level

(including Diplomas)

Contact ; Joan Foster

Mosaics Music

01969 663368

NURSE CHERRY COTTAGE

Beautiful 2 bedroomed cottage in Reeth

Down quiet back lane : Private parking : Cottage garden :

All amenities in walking distance : Children welcome .

Sorry no smokers or pets

www.xcottagesinreeth.co.uk

Mr & Mrs Waller Tel: 01904 798127 or 07817 128655

THOMLINSON TRUST

The Trust provides financial support to individuals and groups based in the Gunnerside area, for education, training and related activities.

Applications are now invited for grants to be awarded in October 2007.

Please write for an application form, enclosing a stamped addressed envelope, to:

The Secretary, Thomlinson Trust, Greenacres, Gunnerside, North Yorkshire, DL11 6LE

or, send an e-mail to:
davidcrapper@yahoo.co.uk

Completed application forms should be returned to the Secretary by the 8th October 2007.

Cat Hole Cottages Burnside Gunnerside



Do you own a holiday cottage?

Is your current agency meeting all your needs?

Do you feel it is too impersonal

or too expensive?

Would you like a more personalised, individual service,

based right here in Upper Swaledale,

at a highly competitive rate?

Would you prefer an agency that can offer you

a variety of service options,

tailored to your needs,

giving you trouble free letting?

If so, Cat Hole Cottages is the answer!

Call Judith on 01748 886366

to discover what we can offer you.

REETH SHOW TROPHY WINNERS

VINTAGE TRACTORS :	T.R. Longstaff Trophy to W. Brennand Reserve Scott Lynas
SHEEPDOG TRIALS :	Perpetual Cup to Tom Huddleston - Brook
NOVICE CLASS :	J. B Allison Cup to Josph Relph - Mac
WALKING STICKS :	Wensleydale Press Cup to A.J. Warwick and Reserve Champion G. Flintoft.
HORSES SHETLAND :	T.W. Brown Cup to Johnson and Plews Parlington Quentin
HORSES FELL :	Castle Print Trophy to J. B. Smith— Hellondale Lille
HORSE DALES :	Sarah Longstaff memorial Cup to D & A Eccles
HORSE REGISTERED WELSH :	Waitwith Trophy to Carl Nee Palmgate Trophy to Will Carr Milburn Trophy to A. Jopling The Bryndir Rosebowl to Will Carr - Bryncanol Trophy to Carl Nee Caygill Trophy to Claire Merrigan Martin
COLOURED CLASSES :	D.T. & R.M. Guy Trophy to Mrs. I. Reid
RIDING CLASSES :	Cecil Halstead Perpetual Cup to Tom Carr Laverick Trophy to Jamie Latham H. B. Atkinson Cup to Samantha Elliot Goldsborough Cup to Samantha Elliot
MOUNTED FANCY DRESS :	Zetland Hunt Cup to Robyn Chilton
OPEN PRIVATE DRIVING :	G.W.Shaw Memorial Trophy to Mr. & Mrs. R.E. Mills
JUNIOR FELL RACE :	Midwood Perpetual Trophy to
HORTICLUTURE OPEN FLOWERS :	Special Rosette to D. Rickaby
VEGETABLES :	Special Rosette to A. Icton
LOCAL CLASSES : FLOWERS:	Special Rosette to G. Frankland
VEGETABLES :	Special Rosette to Mrs. J.H Atkinson Lowther Cup to R. Porter 2 Dales Cup to J.H. Atkinson
FLORAL ART :	Special Rosette to Mrs. N.P. Callender Special Rosette to Rebecca Bainbridge
CHILDREN'S CLASSES :	Special Rosette to Hollie Braithwaite

REETH AND DISTRICT GAZETTE

CHILDREN'S CLASSES OPEN :

Miniature Garden

YOUNG FARMERS CLUB CLASSES :

JUNIOR CLASSES :

SENIOR CLASSES :

BREAD AND CAKES :

CHILDREN OPEN :

GROUP AND MISCELLANEOUS :

HANDICRAFTS OPEN :

PHOTOGRAPHY :

PAINTING OPEN :

CHILDREN'S HANDWRITING :

PAINTING AND HANDICRAFTS :

Special Rosette to Kate Atkin

F.S. Rodber Cup to Charlotte Porter.

Crystal Rosebowl to

Lynsey Bainbridge

Special Rosette to Charlotte Porter

Rebecca Bainbridge

Reeth Bakery Trophy to Mrs. J.

Dinsdale

Special Rosette to Eleanor

Braithwaite

Special Rosette to W. H. Harker

Special Rosette to Mrs. R. Frankland

F.W. Hutchinson Cup to Amand

Wilkinson

Jones Memorial Trophy to Mrs. P.

Twyman

Special Rosette to Mrs. P.E. Millage

Y.D.N.P. Trophy to Mrs. P.E. Millage

Special Rosette to Mrs. M. Knowles

Hendren Trophy to Mrs. P.E. Millage

Special Rosette to Mrs. J. Blinkworth

T.S. Coates Cup to Eleanor

Braithwaite

Special Rosette to Sophie Bulman

The Arthur Durston Memorial Trophy

to Simon Walton

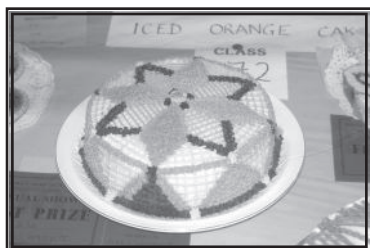
Reeth Gazette Shield to Eva Midgley



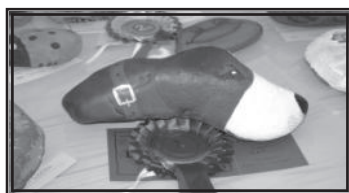
The Dry Stone
Walling
Competition.



Start of the 12 to 14's Fell Race

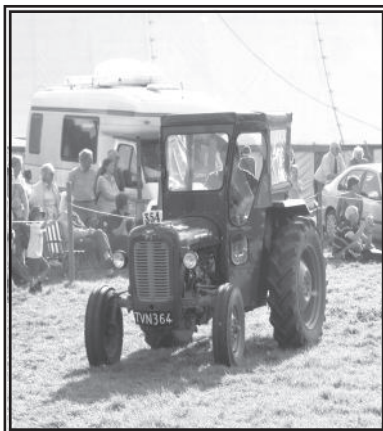


Iced Orange
Cake
First Prize



The Best Decorated Stone

One of the Vintage Tractors



"And the Band played on"



REETH AND DISTRICT GAZETTE

Arkengarthdale Parish Council

A Parish Council meeting was held on the 16th. July, when apologies were received from M. Gale. Complaints have been received about cars parked in Langthwaite obstructing the road to Storthwaite Hall, this problem is gradually getting worse, mostly due to inconsiderate parking of cars. The Parish Council are looking into this. A problem has arisen with the sale of a house in Langthwaite in which the advertisement does not correctly appreciate problems existing in Langthwaite, where sixteen houses have no private parking facilities. The estate agents have been informed. It has been noted that more work has been done on the public toilets. The seat maintenance tin kept at the CB Inn has been emptied of £36.10, the most it ever contained. Thanks are expressed to Mr. & Mrs. Cody for keeping the tin in their pub. We are advised by the NYCC that the cycle route from Northallerton to Penrith via Tan Hill is to go through the Dale. A letter was received from Richmondshire Forum, offering advice to people over 50 with help that is available. A letter was received advising the council of the problems caused on the road to Booze by excessive stormwater running down the road blocking the drains. Complaints were received concerning the excessive amounts of grass on the verges and the footpaths on the roadsides through the Dale. A permanent footpath on the roadside from Langthwaite to Arkle Town has been requested. All this has been brought to the attention of the

Highways Department. The next meeting is on the 10th. September.

Jazz on the Swale at the Buck Hotel

We would like, through the 'Gazette', to express our grateful thanks to Robert Stillion, his family and all the staff of the 'Buck' for all their efforts in making our jazz events at the hotel so successful. We have a loyal band of followers who come to the events at the 'Buck' not only for the quality of the music but for the friendly welcome they always get, not just from the hotel, accommodation providers, but from the people of Swaledale and Arkengarthdale. We would also like to wish Robert, Elma and Malcolm all the very best for their future in New Zealand.

Peter, the new licensee at the 'Buck' is willing for us to carry on putting on jazz events, so our next one is on **Saturday 27th October** when we have two great bands: **Debbie Arthurs³ Hot 5'** and **'The Gambit Jazzmen'** -see posters for full details or telephone 884821. Tickets will be on sale at the 'Buck'

NURSE CHERRY COTTAGE

Beautiful 2 bedroomed cottage in Reeth

Down quiet back lane

Private parking

Cottage Garden

All amenities in walking Distance

Children Welcome

Sorry No Pets or Smokers

www.cottagesinreeth.co.uk

Mr. & Mrs. Waller

Tel 01904 798127 or

07817 128655

Have You Visited Our Garden Centre?

Carl Johnson
**LANDSCAPES
 AND AQUATICS**

Come and have a look at our exciting new products for 2007!

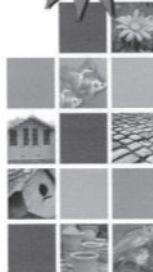
Do you have a pond?

Come and have a look at our range of pond accessories, superb quality pond plants and our new range of pond fish.

Koi Carp
 from
 £4.99

Looking for something different for your garden?

Why not come and have a look at our showroom and see our great range of granite water features and fantastic quality garden furniture. We also have a good range of top quality plants and plant pots and much much more for your garden. Come down and have a look. If you are looking for something in your garden, I am sure we will be able to help you with what you need.



OPEN 7 DAYS A WEEK AND LATE NIGHT TILL 8.00PM ON THURSDAYS

Borough Road | Gallowfields Trading Estate | Richmond | North Yorkshire

Tel: 01748 824058

Visit our website: www.richmondgardencentre.co.uk

A 'Celebration of Sankey' at Gunnerside

Generations of Sunday Scholars in Britain grew up on Ira D Sankey's vast collection of 'Sacred Songs and Solos'. Yet despite their jaunty tunes, simple messages, and memorable catch-phrases, few of these once-popular pieces find a place in modern hymn-books. If you would like to hear and sing some of these well-loved hymns once again, come to Gunnerside Methodist church on Saturday 8th September at 730 p.m. Gunnerside Choir, under the direction of Duncan Bythell, will lead a programme of Sankey favourites, including 'Shall we gather at the river' 'Safe in the arms of Jesus', 'Yield not to temptation', and many more. Refreshments will be served, and there will be a collection for church funds. Come and support the old chapel, enjoy an evening of hearty singing, and wallow in a little nostalgia!

Duncan Bythell

Love country? Love sun? Love horses?

Spanish farmhouse self-catering accommodation . 14km inland from coast. Pool. Please call Pat ON
 01748 884781 or
pat@fincapacheco.com

TO LET

Unfurnished flat in Muker, pleasant sitting room, 1- 2 bedrooms, kitchen & bathroom. £300-00 per month includes electricity. Tel:-
 01748 886251

Greg Porter
General Builder
01748 886434
07969998572

OCTOBER DEADLINE 15TH SEPT.

REETH AND DISTRICT GAZETTE



On behalf of all who take time to enjoy the beautiful environment of Reeth Community Orchard, I would like to say a big thank you to Keith and Brenda Allen for all the love, attention and hard work they have put into what has become such a beautiful part of Reeth. For those of us with small back yards the Orchard is a wonderful place to let children run free and to explore and learn about the world around them. It is a peaceful place away from the busy tourist atmosphere of the Green on a Summer day. The beautiful mixture of colours amongst the plants and flowers, the comfortable seats and the lovely children's dens all make it a truly unique place. So thank you Keith and Brenda for being such a huge part of making it possible. (Name and address supplied)

I read with interest the letter from Florence referring to 'the problems' of our chapels and churches in the Dales which are struggling to survive due to dwindling congregations. I regularly attend Melmerby in Coverdale Methodist Chapel where there is a small congregation of loyal attendee's. My home village, Newton le Willows, recently printed the following poem in our Monthly News Letter and I thought how appropriate it was -over the last five years we have lost our chapel, village pub, shop and post office.

NEXT WEEK INSTEAD

I almost went to chapel, but then an old friend came

And to have closed the door on her would have been a dreadful shame.

So we talked and talked and talked until goodbyes were said...

And I made a resolution to go next week instead.

I almost went to Chapel but something made me late,

And unpunctuality is a sin I really hate, so I didn't go and stayed at home

And to my conscience said...

I'll make a resolution to go next week instead.

I almost went to Chapel, but the air was still and cold

To venture out on such a night would be foolish I've been told.

So I sat and rested by the fire, took up a book and read...

But I made a resolution to go next week instead.

I almost went to Chapel, but my favourite show was on.

And by the time it ended - the time for church was gone.

So I stayed and watched the busy screen until the set was dead...

But I made a resolution to go next week instead.

I really went to chapel last night, but I went far too late.

The church was locked and silent, "For Sale" was on the gate.

Oh! The remorse that then I felt! - For that little cause was dead

And I - Yes I - had killed it...by going next week instead.

Valerie Woodley

Marrick Parish Council 26 July 2007

The Chair welcomed new member Mr Guy Wilhelmy to the Council. Yorkshire Dales Development Framework The National Park Authority had begun a review of its housing minerals and waste planning policies which were expected to take three years. Public consultation on a choice of options and future direction of policy was being carried out. The review was discussed at some length. The Clerk would complete the questionnaire. Code of Conduct Copies of the Standards Board for England's guidance on the revised Members' Code of Conduct were distributed to Councillors. The Standards Board and Monitoring Officer had been notified that Members had adopted the Code on 10 May 2007. This would be advertised, as required by the Local Government Act 2000. Planning Matters There were no objections to the application for extension to stable at Helmsley House, Marrick, or Form B application for the replacement of existing three-wire electrical conductor with a bunched single wire arrangement at Marrick. Permission had been granted for the conversion and extension of existing Shepherd's Hut to form staff annexe; Marrick Park, and the application for renewal of planning permission for conversion of disused buildings to dwelling at Gill House, Hurst. Permission had been refused for the creation of a solar at Chapel Fields Barn, Hurst. Order for Footpath no.33 Marrick had been confirmed. Highway Matters Protruding branches and potholes in a number of locations would be reported to the Highways department. The signing of the Northallerton to Penrith long distance cycle route would be implemented in the near future. It would not go through the parish. Councillor Hodgson offered to obtain some daffodil bulbs to plant in the parish. Other business Councillor Blackie had been contacted regarding the possibility

of siting the mobile skip in Marrick. It was hoped to arrange this for early next year. The Scott Trial would be given permission to run over parish land on 20th. October. It was reported that there had been some tipping and burning on parish land at High Buska. This was in breach of regulations. The Clerk was asked to point out to those responsible that this was not permissible. Following a review, banking arrangements would continue as at present, as no improved terms had been found. Date of next meeting: 27 September 2007 at Marrick Institute.

Reeth Community Orchard Group

The Orchard Group will be holding its annual Apple Picking Afternoon on Saturday, 29th September, between 2 p.m. and 5 p.m., and everybody is welcome to come and help us. This is a really fun afternoon and is usually enjoyed by everyone and especially the children, who can pick up the windfalls and the apples from the smaller trees and watch the grownups teetering on the ladders trying to reach the ones they can't quite get to! This will be followed by the Apple Day on Friday, 26th October, when there is an opportunity to taste the fruits of our labours plus purchase all the products which can be made from apples.

WAR OF THE ROSES

1455 onwards ...

If tha were born i' Yorkshire
Lancashire folk are enemy
If tha were born i' Lancashire,
Yorkshire folk are enemy
If tha were born anywhere else
It's noan o' thy business
So There!

Gordon Roscoe - Bolton

REETH AND DISTRICT GAZETTE

HAZEL SMITH STUDIO AND GALLERY ESTABLISHED 1997



ORIGINAL PAINTINGS PRINTS AND CARDS

THE ONLY GALLERY TO SELL WORK
EXCLUSIVE TO REETH

NEWLY RELOCATED TO
ABOVE THE GIFT SHOP ON THE GREEN
REETH
OPEN MONDAY - SATURDAY 10.00-5.00

THE OLD TEMPERANCE BOOKSHOP

Reeth, Richmond, DL11 6TE
Tel. 01748 884185



Christian Books, Crafts & Cards
On Reeth Green, 50 yards up from
Reeth Evangelical
Congregational Church

Opening times :

1.30pm - 4.00pm Mon., Thurs., Sat.

10.30am - 4.00pm Fri. (Market Day)

*'Still open as normal since the fire,
thanks be to God'*



RIDING CENTRE

in the Yorkshire Dales

**Brand new purpose built
arena**

**Stunning Hacking over the
moors**

**Novice and experienced
riders welcome**

BET Ride Leader qualified

Contact Jane on 01748 884731
E mail Arklemoor @ hotmail.com
www.arklemoor.com

S. J. R. Plumbing Services

For all your domestic plumbing
Requirements at very competitive rates,
Please call Stuart on: 01748 884036



ICECREAM

PARLOUR

Situated overlooking
Reeth Green

Choose from 16 flavours of delicious
Brymor Real Dairy Ice Cream served
in a glass, or a variety of cornets.

Treat yourself to a
Mouth watering Sundae
Tea & Coffee

01748 - 884929

SWALEDALE WOOLLENS **of** **MUKER**

The lovely Dales village of **Muker** lies in a walkers' paradise and has been the home to **Swaledale Woollens** for nearly 30 years. Our unique shop is open all year and you are welcome to browse through our exclusive range of locally produced hand and machine-knitted garments, all made to the highest of standards from Swaledale and Wensleydale wools.

A new mail order brochure is now available and our exciting web-site is well worth a visit.

Swaledale Woollens (2002)
Muker, Richmond, N. Yorkshire
DL11 6QG

For our mail order brochure call or
click 24 hours a day.

01748 - 886251 or

www.swaledalewoollens.co.uk

Plans Prepared.

Detail plans prepared for planning applications and building regulations for conversions, extensions and new builds.

Contact G. Staines

Tel. 01748 886691 Mob: 07896 147207

PROBLEMS WITH YOUR COMPUTER

I CAN : advise you,
sort out the computer,
train you on how to get the most out of the
PC. give good technical advice.
show you how to do backup
how to tackle virus problems
and more besides
can travel and work within the whole of
SWALEDALE
Call me, Pia Haley on 01748 886804

Darren Chadwick

**Home maintenance, repairs, and
improvements**

FULL HANDYMAN SERVICE

**Decorating, joinery, plumbing, building
work**

All jobs considered

Tel: Darren 01748 886698 or

Email: swalecaretakers@aol.com

C. J. BEESTON

Chartered Accountant

**Personal Taxation Accounts - Payroll/VAT
The Laurels, Reeth.**

Tel. & Fax : 01748 - 884535

G E BROWN & SON

Building Contractors
UPVC Doors - Windows
& Conservatories Approved
Agent for Damp Proof Course
& Timber Treatment
Specialist Joinery Work
Sliding Sash Casement Windows
Works carried out by
qualified craftsmen
The Old Mill, Low Row.
Tel: 01748 886356
Fax: 01748 886026

PATRICIA

DAIRY COTTAGE, LOW ROW
Experienced in both Men's and Ladies
sewing alterations.

Most sewing tasks undertaken

'Will Come to you'

01748 886905

*THE GIFT SHOP * REETH*

GARRY AND KAREN ATKINSON

Newsagent: Daily & Weekend Newspapers, Magazines & Comics

Off-Licence : Variety of Beers, Wines, Spirits, Cigarettes & Tobacco

Original Swaledale Ice Cream : Try one of our tantalising flavours or delicious sorbets which are all made on the premises. Take away tubs also available.

Fresh Sandwiches : made daily - orders welcome.

Giftware : An exquisite selection of gifts for all occasions. Also available, greetings cards, postcards, maps & guides, walking sticks, stationery, books, games, toys, milk and many household items.

Agents for : Dry Cleaning, Laundry and Photo Processing

NEW Now stocking regulation ballet wear, shoes & accessories also for modern dance.

Tel. 01748 884291

BUCK HOTEL REETH

Part Time

**Admin/Receptionist
required**

**for mornings 5 days
Please contact Peter
01748 884210**

ALGARVE PORTUGAL

New Luxury Villa & Apartment To Rent
Own Private Pool, Peacefull Area, Only
1½ Miles To Blue Flag Atlantic Beaches
Walking, Birdwatching, Surfing,
Availiable All Year,

No Smoking, No children.
01748886361

Email brianjutsum@aol.com

WEBSITE www.jutsum.co.uk/villa

skeltonstudio

DESIGN COLOUR FABRICS

*Specialising in soft furnishings
Curtains & window treatments*

T 01748 821107/M 07710 692 809
heather@skeltonhall.fsnet.co.uk

Breakfree Centre

Every Friday 10am - 12noon at the
Quaker Meeting House, Grove Square,
Leyburn. A meeting place for people with
memory problems their families and their
carers Dales Carer Support Worker
Roger Barnett in attendance.
Richmondshire Alzheimer's Society
Reg. Charity No 296645

Reeth Village Store

We supply everything from locally baked Bread, Pastries, Cakes, Fresh Fruit & Vegetables, Dairy Produce, Soft Drinks, Ice Cream, Household Goods, Confectionery, Tobacco & Greeting Cards.



CASH MACHINE INSTORE

- Daily & Weekend Papers
- Fine selection of Wines & Spirits
- Ready to cook meals Indian & Chinese
- Latest Videos to rent

Proprietors **GUY & SUZANN**
Service with a 'SMILE'

Mon - Fri 7 am - 7.30 pm
Saturday 7 am - 7 pm
Sunday 8 am - 4 pm

ELECTRONIC PHONE CARD TOP UP

TEL. 01748 884552 - Free Local Delivery RC

The Chyll

Bed & Breakfast

Arkle Town, Arkengarthdale

Set in wonderful countryside,

With spectacular views of Arkengarthdale

All bedrooms en-suite with colour TV

For details contact Mrs. Sheila Good

on 01748 884353 or Fax 01748 884015

C.L.A. Construction

Stonemasonry

All types of stone walling

General Building

Contact Colin Atkinson

Tel. 01677 422380

Mob. 07854 295279

Kim and Richard Atkinson

**WELCOME YOU
TO**

THE BLACK BULL



REETH

The oldest Inn in Reeth

Quality accommodation

Excellent food

(very popular Sunday carvery)

**A fine selection of
Real Ales and Wines**

And a warm welcome

Tel. 01748 884213

HELP !

Our organic Health Care Business is expanding! Home based, initially part time, self employed. Full training and support. Excellent rewards. If you are honest, ethical and hardworking, please contact Ann on 01748 884721

**Lownethwaite
Landscapes**

**ALL ASPECTS OF HARD
LANDSCAPING**

Block Paving, Tarmac, Concrete Drives,
Paths, Patios, Gravel, Turfing,
Walling Maintenance, Fences, Gates,
Pergolas, Hedge Cutting,
Pruning, Treework, Rubbish Removal,
Mini Digger Work, Decking

ALL AREAS COVERED SO CALL

01748 824861

or

07773 740611

FOR A FREE FAST QUOTE



**Don't forget, a subscription to
the Gazette makes an excellent
present for any occasion.**

MARKET PLACE

FOR SALE

WANTED

**To advertise in the Market
Place, please contact the Editor,
address and telephone number on
page 3.**

CLEANER REQUIRED

Marrick priory requires a general cleaner Mondays and Fridays 9am until 1pm.

The position is seasonal and the applicant will work a s part of a team. Please call Win Ryder on 01748 884434 for more information.

CROFT FARM BOARDING KENNELS : GRINTON

Brand new purpose built kennels open December 2006

LARGE SPACIOUS RUNS; 3 FIELD WALKS DAILY

DIETS CATERED FOR ; 24HR. VETINARY ASSISTANCE

BACKGROUND MUSIC ; BALL PLAY AREA

HEATED SLEEPING AREA ; RAISED BEDS AND VET BEDDING

also DAILY CRÊCHE AVAILABLE

Contact Janet Sunter on 01748 884624 or 0781 3614263

TWO DALES DIARY DATES**September**

- 5th** **MUKER SHOW** at the Showfield, Muker
- 7th.** Brass Band and Choir Concert Arkengarthdale St. Mary's Church in aid of Chapel and St. Mary's funds.
- 6th - 9th** Christian Heritage Weekend - check with local churches for events.
- 8th** Poetry Day at the Swaledale Museum
A Celebration of Sankey at Gunnerside Chapel, 7.30pm
- 9th** Hardraw Brass Band Competition, Hardraw Wensleydale.
- 21st** 'Steam Radio' Memorial Hall Reeth at 8pm
- 22nd.** York Philharmonic Male Voice Choir, St. Mary's Church, Arkengarthdale. 7pm.

October

- 12th** **Steam Radio, Reeth Memorial Hall**
- 12th** Bob Fox and Billy Mitchell, Reeth Memorial Hall.
- 19th** Swarb's Lazarus with Judith Haswell 8pm Reeth Memorial Hall

November

- 16th** Jez Lowes and the Bad Pennies Reeth Memorial Hall

Greenway Cattery




Set in the Yorkshire dales providing safe and comfortable care for your cat, peace of mind for you.

*Open all year.
Reasonable rates.*

*Greenways
Grinton
Richmond Nth-Yorks*

Tel 01748 884312



**The Reeth Tea Dance
Thursday 19th
September** in the Reeth Memorial Hall. There will be 50/50 dancing with live music from the Mike Rose Band. All are welcome and admission is just £2, including light refreshments.

THE BURGROYNE HOTEL

REETH

**Eight Luxurious Bedrooms
With Views Over Swaledale**

**Dinner served at 8pm each
Evening, menu changes daily.
Parties up to 35 catered for.**

**Contact
Telephone 01748 884292**

The Gazette welcomes letters and articles on all subjects. Please send to the Editor 01748 886111 /886505 or email : GML1@gallowstop.fsnet.co.uk

The Gazette makes a useful, inexpensive present, why not give an annual subscription ?
Contact the Subscription Secretary for details (address on page 21)

IS THIS YOU?

- **SELF EMPLOYED?**
- **PAPERWORK IN A MESS?**
- **TOO BUSY TO GET YOUR BILLS OUT FOR ALL THE WORK YOU HAVE DONE?**

If you'd like some help invoicing or getting your paperwork up to date, I'll come to you either as a one off, or more regularly at a time to suit you.

Confidentiality guaranteed.

To discuss phone

Christine on 01677 470504

REETH AND DISTRICT GAZETTE

WENSLEYDALE TREE & HORTICULTURAL SERVICES

(Est. 1995)

DAVID ALLEN (HND Arboriculture)

Fully insured (£5million)

Professional tree work: felling, crown thinning etc undertaken to BS 3998
Hedge establishment and maintenance. Supply /planting of forest and ornamental trees

Logs for sale. Woodchipper for hire. Woodchips for sale

Fruit tree maintenance. Pesticide applications (weed control services)

Also, fencing, trelliswork, pergolas, arches.

Tel. 01969 667364, Mobile 07811 576108 or e: mail -

david@allen3069.freesevice.co.uk

www.treesinwensleydale.co.uk



WELCOME TO THE WENSLEYDALE

DECORATIVE AND FINE ARTS SOCIETY

If you love the arts, and want to increase your appreciation and discover more, then the Wensleydale Decorative and Fine Arts Society is for you. Through nine lectures each year, study days and a series of visits to galleries, stately homes and gardens, members participate in the amazing historical perspective of art history. Lecturers are chosen for their academic knowledge and their first class lecturing ability. Lectures for this season start on 9 October with *The History of the Drinking Glass*, and are held at the Middleham Key Centre. *The Garden as*

an Art Form follows in November, and *Angels, Cherubs and the Hosts of Heaven* in December.

Subjects for 2008 are as varied as the architecture of Palladio; modern architecture; the Green Man; William Blake and Samuel Palmer and samplers. Members also receive the quarterly NADFAS Review and our local newsletter.

The annual subscription fee is £35 and there is no waiting list, information and application forms are available from Elaine Frances tel. 01969 624203 or elaine_frncs@yahoo.co.uk

We look forward to meeting you in October.



ANGEL CHOCOLATES

Fresh chocolates and truffles, hand-cut slabs, dipped apricots, hot chocolate, mini dinosaurs, giant hearts and much more

Made by hand using the finest quality ingredients including Valrhona chocolate and fresh local cream
No artificial preservatives, flavours or colours

Gift service available * Can be posted anywhere in the UK

Phone or email for a leaflet

Phone: 01748 884374 or Email: angel@swaledale.org

Melanie and Leigh Torrance, The Hayloft, 1c Silver Street, Reeth, North Yorkshire, DL11 6SP

Why not come and meet us at these Northern and Southern Dales Farmers' Markets:

Stokesley (1st Sat of the month); Captain Cook's Square, Middlesbrough (1st Tues); Harrogate (2nd Thurs); Hartlepool (2nd Sat); Settle (2nd Sun); Richmond (3rd Sat); Grassington (3rd Sun); Northallerton (4th Wed); Leyburn (4th Sat); Nature's World, Acklam, Middlesbrough (last Sunday)

R. & W. GIBSON & SON Ltd.

**CERAMIC WALL
& FLOOR TILERS**
SHOWROOM NOW OPEN

Monday - Friday 9.00 am -
4.30pm

Saturday 10 am - 1 pm
(or by appointment)

At Firby Road,
Gallowfields Trading Estate
DL10 4SS

Tel. 01748 - 822682 (Home)

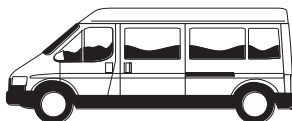
**Margaret Simpson would like to
thank all relatives, friends and
neighbours for their kind support,
cards and best wishes during her
two stays in hospital this year.**

*Ed. The Gazette would like to apologise for
the late entry of the thank you notice. GML*

HARKERS COACHES

**LEAHOLME COTTAGE, REETH,
RICHMOND,
NORTH YORKSHIRE, DL11 6SF.
TELEPHONE 01748 884533**

harkerscoaches@aol.com



**WHEELCHAIR ACCESSIBLE MINI BUS.
MINI BUSES 7 TO 24 SEATERS
PRIVATE HIRE.**

**ARKENGARTHDALE SERVICE
WE HAVE A SERVICE TO CONNECT
WITH THE**

SERVICE BUS AT REETH
PLEASE RING BY 6/O'CLOCK THE NIGHT BEFORE
TO USE THIS SERVICE

**TRANSPORT FOR AIRPORTS AND
TRAIN STATIONS**

FREE QUOTATIONS GIVEN
PROPRIETORS .M.M&F.M.TERRY
**WE NOW TAKE THE TRAVEL
VOUCHERS**

SUPPLIED BY RICHMONDSHIRE DISTRICT

**Next Deadline
is September 15th.**

KILLSECT/RODENTKILL PEST CONTROL & WILDLIFE MANAGEMENT

Richard Baker

Insecticide and Pesticide Applications, Guaranteed Woodworm Timber Treatment,
Damp Proofing

Rabbit netting, Bird Proofing, Supplier of UVL Flykiller Units,
Fly screens/doors/curtains etc.

Please call

Richard Baker 01748-884178

Mobile: 07866-200687

BAKER DEVELOPMENTS

restoration and new builds

**All aspects of building work
Restoration and Conversions**

- New Builds • Extensions • Alterations • Insurance Work
- Guaranteed Woodworm Timber Treatments
- Pointing • Dry Lining
- Plastering & Rendering

Quality workmanship by experienced tradesmen

Contact John Baker

Tel 01748 884731 Mob: 07813 708254



Sweepin' The Dales

Take the worry and mess out of having your chimney swept.

Contact **Tony Bell**, and take advantage of the following

- Clean, safe and thorough, with minimum disruption to your daily routine.
- Fully insured.
- Certificate of cleaning issued.

Tony Bell

Tel. 01748 811645

Email : Sweepinthedales@yahoo.co.uk

W & D. GARNER

& partners

9 Market Place, Bedale

Tel: 01677 423193/424896

**FRUIT, VEGETABLES &
EXOTICS**

See us every

Friday at Reeth Market

Also we supply Restaurants,
Hotels, B&B's, Cafes etc. in the
surrounding area.

We deliver Monday, Wednesday
and Friday - Winter & Summer

Why not try our goods?

YOGA GROUP

**STRETCH AND RELAX WITH
EILEEN AND FRIENDS**

We are a friendly group who practice yoga-based exercises to help strengthen the body and improve flexibility. We will be starting the Autumn term on Thursday 4th. October at 10.00am in Fremington Sunday School. All ages and abilities are welcome to join us. For more details contact

Eileen Martin tel. 884257

ELECSA

Free Estimates

Part P Approved

IAN HALL ELECTRICAL SERVICES

Complete design, installation, maintenance and repair service of

Domestic, Agricultural and Commercial

Inspection, Testing and Certification

PAT - Portable Appliance Testing

01748 884462 or 07739 585311

HALHlly@aol.com

JIB registered & Member of the Institute of Electrical Engineers





On 24th June we took 2 teams, Under 12 and Under 14, to a girls' tournament at Northallerton. Most, if not all, the other teams played in leagues, mostly on Teesside, and we were there mainly for experience and indeed 3 of our girls had joined very recently and had no match experience at all - they soon got it! We did get one well deserved draw but the other results were perhaps inevitable but, with possibly only one exception, we were never overwhelmed and the girls all gave a very good account of themselves. By the end of our final game, it was just starting to rain so we packed up and went home without knowing that Bethany Stubbs had been voted by the referees as player of the tournament for the Under 14's. We know that Charlotte Porter and Madeleine Hill also received nominations. Bethany later received a fine engraved glass trophy. Well done Bethany. On 29th June we took an Under 14 team to play Barnard Castle School in an end of season friendly. We largely held our own in the first half conceding only 1 goal. After half time, however, Barney stepped up a gear and dominated the game scoring 4 more. It has to be said that few of our players are used to 11-a-side but it is good experience. It is also relevant that although Barnard Castle is still very much a rugby school, they are now taking football very seriously. As always, they were very good hosts. On 8 July we took an Under 12 team to Leyburn for a tournament-organised by the Round Table.

We had one particular absentee. Bob was in Berlin and his guidance was sorely missed. In the first match Askrigg took a 2 goal lead in the first half. Dales came back strongly with 2 goals from Dan Longden but could not get the decider. We then met a team playing as Spennithorne A but who seemed to belong to a higher league who beat us 5-0. The next match we lost 3-1 with a good goal from Matthew Hill and the final match against Leyburn we drew 1-1 would like to play tribute to Jack Lord for helping me with these matches.

We now plan for next season. We certainly very much need more volunteers both on and off the field if Junior Football is to continue. We have now affiliated to the FA and start the new season "official". **Please help us if you can. We need you.** Thanks to all who supported our Cream Teas event at Allison and Robert Stubbs. This raised over £500 and is a great start for the year. We are collecting Tesco Sport vouchers again this year which is starting soon. These may be left at Reeth Garage, White House Reeth, CB, Farmers Arms, Punchbowl or Red Lion or given to any parent. They are a tremendous help in providing basic equipment. We have started training for 2007/08 season and new players aged 5-15, boys and girls, are very welcome. Our objective is to play football "primarily for enjoyment". We aim to improve our skills and do our best but do not subscribe to the "win at all costs" philosophy of some clubs with the consequent shouting and yelling at the children. David Williams 884650

REETH AND DISTRICT GAZETTE

TONY SUNTER BUILD LTD.

**New Builds
Renovations
Extensions
General Building Work
carried out
01748 884624
07973 767023**

Superb Holiday Cottage
ARKENGARThDALE

Quiet and private location with
excellent views

Sleeps six - centrally heated -
Modernised

& equipped to an extremely high standard

Available all year PLUS

Low season mini - breaks

Mrs. G. Stones 01748 884360

GL**BUILDING AND DECORATING**

FREE ESTIMATES

FULL INSURANCE

QUALITY WORK

Tel. Home 01748 884459

Work 07866 718210

FATSHEEP

from the Dales

Reeth Green, Reeth
Handmade Crafts and Gifts.
Jewellery, Woodware, Pottery,
Soap, Jams, Honey, Chocolate,
Cards, Prints, Candles, Textiles
and much more.

**Everything we sell was made
in the Yorkshire Dales.**

☎ 01748 880189

🌐 www.fatsheep.co.uk

The CB Inn
ALTERNATIVE



**The last Friday of every month
No experts. Prizes for best & worst**



**FOR YOUR COAL &
SMOKELESS FUELS**

JAMES PEACOCK

Approved Coal & Fuel Merchants
Speedy & reliable deliveries of Solid
Fuels & Oils throughout the
Swaledale & Arkengarthdale area.

Tel. 01969 650465

Fax : 01969 650888

THE CARPENTERS SHOP

Manufacturers of purpose made joinery.

Curved and circular joinery specialists.

Supplier and Installer of

Hardwood and softwood traditional box sash windows
that accept Pilkington K double glazing,
fully weather - stripped and made to any design and shape.

Hardwood and softwood weather - stripped windows
of any design to accept triple glazed units also

Many more joinery products.

Fully equipped joiner's workshop
for any individual joinery requirements.

ALL work made by time served craftsmen.

Please call John for a FREE quotation

TEL. 01748 884193

John Pilgrim
Carpenter and Joiner



In touch with your roots

*Landscape Design
& Garden Enhancement*

Creating Landscape
Architecture for all budgets
from consultation,
to design, to build

Telephone 01748 884280
www.bakersquared.co.uk

Swaledale Ponies

Western style riding in the heart of the Yorkshire Dales

- Horses bought and sold.
- western saddles and tack for sale
- Training of young/problem horses for western or driving.
- Training pen available for hire.



Swaledale Ponies
Skeb Skeugh Farm
Angram
Nr Richmond
North Yorkshire
DL11 6DT

Yorkshires first Western Trekking Centre
Open all year round

Western riding tuition, half/full day treks, or bespoke holiday packages to suit your requirements. contact Django on 01748-886682. mobile 07813-715120
for further details or view the website at

www.swaledaleponies.com

Tree Surgeon

Trevor Grigg

NCArb and NPTC qualified

- Crown thinning/cleaning and lifting
- Felling and dismantling
- Chainsaw/groundwork

All work considered

For free advice please telephone

FREMINGTON (01748)880149

Spacious Holiday Cottage between Gunnerside & Muker

High quality and well equipped.
Open fire. C/H. Beamed ceilings.
Private enclosed garden.
Sleeps 6/7 - three large bedrooms.
DVD.

Free unlimited wireless broadband

Pets welcome.

Non smoking

Tel. 01422 833999

www.dales-cottages.co.uk

Brian Campbell

Painter and Decorator

All Work Guaranteed

Obligation Free Estimates

No Job Too Small

Phone 01748 880143

Email catcam@swaledale.org

SCHOOL OF THEATRE DANCE LTD

JANET SEYMOUR LRAD

**REGISTERED TEACHER OF THE
ROYAL ACADEMY OF DANCE**

TEL: 01748 884 189 or 884 677

BALLET from 3 years

TAP and MODERN from 5 years

CLASSES AT REETH SCHOOL

Run Monday to Thursday

From 3.45pm



FRIENDLY LOCAL SERVICE SINCE 1922



For all your oil requirements for homes,
business and agriculture

Supporting the community of Reeth

HEATING OIL – KEROSENE/ GAS OIL

SIGNALMAN - AUTOMATIC OIL MONITORING

BAYFORD PAYMENT PLAN

TANKS & BOILER SERVICING

CALL THE SALES TEAM NOW ON

01609 771 771

Order online: www.bayford.co.uk

REETH BAKERY

Silver Street, Reeth.

Swaledale's only real working bakery where virtually everything is handmade on the premises. Free Range eggs, local butter, milk, and many other quality and organic ingredients used.

Tea Room and Bakery open every day throughout the summer.

Also available are Handmade Cakes, Biscuits, Speciality Organic Bread, freshly cooked pies and pasties, Swaledale and Wensleydale cheeses.

Fresh sandwiches made to order.

Orders welcome.

For mail order please

Tel. 01748/884735 or 884500

or Email : jhc@reethbakery.co.uk

Charming old cottage in the centre of Reeth well placed for all village amenities. Open fire and background heating, fully fitted kitchen, dishwasher, fridge/freezer etc. Two bathrooms, 3 double bedrooms and an attic play area/fourth bedroom with two single beds and cot. The property enjoys private car parking and has a secure rear garden area with patio table and chairs. Bed linen and towels are provided and dogs are welcome. For further details tel. Doris on 01642 866628

The Bridge Inn



Grinton, Richmond

DL11 6HH

Tel.01748 884224

Traditional old coaching inn
serving quality food all day,
every day.

Restaurant with extensive a`la
carte menu, award winning ales
& fine wines.

Recommended in 'The Good
Pub' & 'Good Beer' guides.

REETH GARAGE Ltd.

Arkengarthdale Road,
REETH, Richmond North
Yorkshire. DL11 6QT

**PETROL & DIESEL
FUEL STATION
AWARD WINNING
FORECOURT SHOP
MOT TEST STATION
REPAIRS AND SERVICING**



**FROM BRITAIN'S LEADING
MANUFACTURER
LIVESTOCK, FLAT BED,
HUNTER HORSEBOX,
TIPPING, BOX VAN,
GENERAL DUTY PLANT
CAR TRANSPORTER, PICK UP
CANOPIES, UNBRAKED AND BRAKED
SINGLE, TWIN, TRIPLE AXLE
FROM £500 TO £5000
IFOR WILLIAMS HAS A TRAILER TO DO
A JOB FOR YOU
USED TRAILERS AVAILABLE**

Opening hours
Mon - Fri 8am - 6pm Sat. 8am - 5pm
Sundays closed

**TEL. 01748 - 884243
EST. OVER 60 YEARS**

D. J. OLNEY
***Painter and Deco-
rator***
***Interior &
Exterior***
call

**01748 884065 or
07 801 026 006**

**All items for the Gazette
may be left at
REETH POST OFFICE**

R.W. STONES
PLANT & AGRICULTURAL HIRE

- ◆ 360° Excavator Hire
- ◆ Groundworks/Site preparation



**ROUND BALING
SERVICES
HAY STRAW SILAGE**

BOBCAT HIRE

**01748 884360
01748 884718
07974 406647**



Geoff Braithwaite

**Building Maintenance
Painting & Decorating
Gardening**

**All work considered
Chapel House, Muker
Tel. 01748 886822
Mob. 07891 063546**

**The Gazette would welcome drawings
of local interest for the cover.
Please send to the editor.**

SWALEDALE CATERERS

Any event catered for.
All home cooked food.
No problem, we travel.
Waitresses provided, or, if preferred, we
can just deliver food to your door.
Lisa Porter on 01748 886434

Cosy Holiday Cottage for TWO

Peaceful location with panoramic
views of Arkengarthdale.
Ideal for walking or just relaxing.
Tel. Shirley Gale 01748 884779

OCTOBER DEADLINE SEPTEMBER 15TH.

LOW FAGGERGILL COTTAGE

Cosy holiday cottage on a Dales 'working'
hill farm with breathtaking views of
Arkengarthdale - Sleeps two.
Ideal base for walking, biking and touring
the Dales or simply enjoying a quiet time.

Mrs Gladys Atkinson

Low Faggergill Cottage, Arkengarthdale,
Richmond, North Yorkshire. DL11 6RS
Tel. 01748 - 884550

Gardening Services

**Mowing, weeding, sowing,
borders, pots and baskets
Please call Amanda on
01748 884311
or 07729 164984**



Holiday Cottage in Muker Village Wanted

**A person(s) to provide a Saturday Changeover service for a cottage with 2 x double and
1 x single bedrooms.**

**The service to include: Laundry, cleaning and key holding.
An excellent rate per changeover is available.**

**For more details and to discuss the opportunity please call
Richard & Gill on 01926 624173**

Langthwaite - Arkengarthdale

RED LION INN

Free House — Real Ales — Bar Snacks

Books & Maps

Tel. 01748 884218

TREVOR J. HIRD

ELECTRICAL CONTRACTOR

No job too small - - **FREE** estimates

Reduced rates for Senior citizens

Telephone 01748 884544

STUBBS ELECTRICAL LTD **ELECTRICAL CONTRACTORS**

**For all your Domestic &
Commercial Requirements**

Rewires, Security Lighting,
Showers, Storage Heaters,
Inspections & Testing &
Portable Appliance Testing.

Tel: 01748 822907

Fax: 01748 822345

e:mail -

stephen@stubbselectrical.co.uk

FREE ESTIMATES



NORMAN F. BROWN **CHARTERED SURVEYORS & ESTATE** **AGENTS**

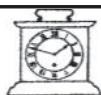
SALES - LETTINGS - MANAGEMENT
FREE 'NO OBLIGATION' MARKET APPRAISAL
AVAILABLE UPON REQUEST

14 Queens Road, Richmond, North Yorkshire,
DL10 4AG

Tel: (01748) 822473/822967

www.normanfbrown.co.uk

THERE IS ONLY ONE
WHITE HOUSE
ANVIL SQUARE, REETH
TEL : 01748 884763



CLOCK WORKS

Clocks & Barometers
Repaired, Cleaned,
Serviced & Restored

Ian Whitworth

Dales Centre
Reeth, Swaledale
North Yorkshire. DL11 6SP
Tel: 01748 884088

**Member British Watch & Clock
Makers Guild**

DAVID E.LLOYD

Chartered

Builder

The Gables

Healaugh

Richmond

Tel. 01748 - 884315

M. GUY - PLUMBING

For all your
plumbing requirements
AGA'S & RAYBURN'S
SERVICED

Tel: 01748 - 825640

IAN HEUGH **AUTO** **ENGINEER**

Hillcrest, Harmby

Your local
'Scrap Metal Merchants'

Cars and all scrap metals
wanted.

Give us a call on

01969 622284

RESLEK SERVICES

Repairs to all makes of washing machines,
fridges, freezers, cookers, microwave ovens, etc.
- ALL WORK GUARANTEED -

01748 818332 or 07740 986688

