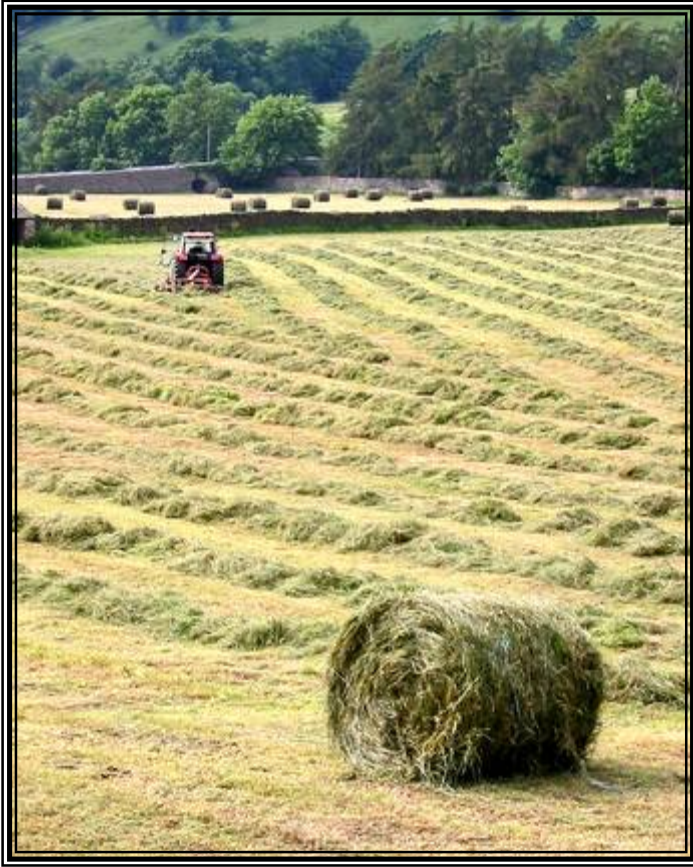


# REETH & DISTRICT GAZETTE

ISSUE NO. 180

AUGUST 2010



The local news magazine of  
the Two Dales

PRICELESS

## CHURCH SERVICES in Swaledale & Arkengarthdale

### **Sunday 8th AUGUST**

- 9.30am St. Andrew's, Grinton  
*Eucharist*  
St. Michael's, Downholme  
*Holy Communion*
- 10.30am Low Row URC  
Reeth Methodist
- 11.00am St. Edmund's Marske  
*Morning Service*  
Reeth Evangelical Congregational
- 11.15am St. Mary's, Arkengarthdale  
*Holy Communion BCP*
- 2.00pm Keld URC
- 6.00pm St. Mary's, Muker  
*Family Service*
- 6.30pm Arkengarthdale Methodist  
Reeth Evangelical Congregational

### **Sunday 15th AUGUST**

- 9.15am St. Mary's Muker  
*Holy Communion BCP*
- 10.30am Low Row URC  
Reeth Methodist  
*Holy Communion*
- 11.00am Holy Trinity Low Row  
*Eucharist & Baptism*  
St. Edmund's, Marske  
*Eucharist*  
Reeth Evangelical Congregational
- 6.30pm St. Mary's, Arkengarthdale  
*Evening Prayer BCP*  
Gunnarside Methodist  
*Holy Communion*  
Reeth Evangelical Congregational

### **Religious Society of Friends (Quakers)**

Meet at the Friends Meeting House in Leyburn, Bainbridge and Countersett. For details of regular weekly services and any further information please telephone Peter Neale 01969 625470

### **Roman Catholic Services**

please contact Father O'Neil on 01748 822175

### **Sunday 22nd AUGUST**

- 8.00am Holy Trinity Low Row  
*Holy Communion BCP*
- 9.30am St. Andrew's, Grinton  
*Eucharist*  
St. Michael's, Downholme  
*Holy Communion*
- 10.30am Low Row URC  
*Holy Communion*  
Reeth Methodist
- 11.00am St. Edmund's, Marske  
*Eucharist*  
Reeth Evangelical Congregational
- 11.15am St. Mary's Arkengarthdale  
*Holy Communion BCP*
- 2.00am Keld URC
- 4.30pm Reeth Evangelical Congregational
- 6.30pm Arkengarthdale Methodist  
*Holy Communion*

### **Sunday 29th AUGUST**

- 10.30am Low Row URC  
St. Mary's, Muker  
*United Parish Eucharist*
- 11.00am St. Edmund's, Marske  
*Eucharist*  
Reeth Evangelical Congregational
- 3.00pm Village Green, Reeth  
*Songs of Praise with Reeth Band*
- 6.30pm Reeth Evangelical Congregational

### **HOLY TRINITY (Melbecks)**

Churchyard Wall.

Many people will have noticed the damage caused by last winter's rain. The PCC is glad to report that the affected parts of the wall will be taken down and rebuilt as the original. Work is likely to start sometime during the early autumn. We wish to reassure all those who have a family interest in the graves immediately behind the wall that utmost care will be taken to prevent disturbance. While the repairs are essential, we, the contracted builders and the structural engineer are all conscious that this is a sensitive undertaking. If anyone has concerns or would like more information, please contact the Churchwarden, Joan Graveson (01748 886 470).

## GAZETTE MANAGEMENT TEAM

Chairman :

MALCOLM GARDNER

Forge House, Healaugh, Richmond DL11 6LD

Tel/Fax : 01748 884113

Email : sales@conveyorconsultancy.co.uk

Secretary : Emma Lundberg

Gallows Top, Low Row, Richmond, DL11 6PP .

Tel : 01748 886505

Email : GML1@gallowstop.fsnet.co.uk

Treasurer : David Trusson

The Lodge, Marrick, Richmond, DL11 7LQ

Tel. : 01748 884474

Email : [rdg@marricklodge.com](mailto:rdg@marricklodge.com)

Production Manager : James Alderson

Greenways, Grinton, Richmond, DL11 6HJ

Tel. : 01748 884312

Email :

jamesaldersonongreenways@hotmail.com

Distribution : Wendy Gardner

Forge House, Healaugh, Richmond, DL11 6LD

Tel. : 01748 884113

Subscription Secretary : Alex Hewlett,

The Vicarage, Reeth, Richmond, DL11 6TR

Tel. : 01748 884706

Email : alex@attainmenttraining.co.uk

EDITOR : George Lundberg

Gallows Top, Low Row, Richmond, DL11 6PP

Tel. : 01748 886111/886505

Tel/Fax : 01748 886111

Email : GML1@gallowstop.fsnet.co.uk

Upper Dale Distribution : Sue Alderson

Tel. : 01748 886292

Email : susana@swaledale.org

## REETH & DISTRICT GAZETTE LTD

No material may be reproduced in whole or in part without permission. Whilst every care is taken, the publishers cannot be held legally responsible for any errors or opinions in Articles, Listings or Advertisements.

**Printed and Published by the  
Reeth & District Gazette Ltd.  
c/o THE TREASURER  
DAVID TRUSSON**

**The Lodge, Marrick  
Richmond, North Yorkshire. DL11 7LQ  
Tel./Fax : 01748 884474**

**Email: [rdg@marricklodge.com](mailto:rdg@marricklodge.com)**

**"Gazette" - ADVERTISING**

To ensure prompt attention for new adverts, setting up, changes to current advert runs as well as articles for inclusion, please contact:

**The EDITOR - G. M. Lundberg  
Gallows Top, Low Row, Richmond,  
North Yorks. DL11 6PP  
: 01748 886111 or 886505**

**Email : [GML1@gallowstop.fsnet.co.uk](mailto:GML1@gallowstop.fsnet.co.uk)**

## GAZETTE DEADLINES

In order that we can distribute the Gazette at the beginning of each month, it is necessary to have a Deadline Date. The Deadline Dates for the next few months are as follows

September	August 18th
October	September 15th
November	October 15th

PLEASE NOTE

We cannot guarantee any entry but submission by the deadline is of considerable help.

**Thanks to Peter Cuff for this month's picture - 'HAYTIME'**

**The Gazette would welcome any drawings or pictures to consider using for the front cover. Please send by email or drop them into Reeth Post Office**

## LARGE PRINT COPIES OF THE GAZETTE

We can now offer large print copies of the Gazette. These are issued free of charge, but P & P is £14 pa.. Please inform the Subscription Secretary should you require this service.

**For all advertising queries please contact the editor.**

MUKER SHOW

Muker Show is on Wednesday 1<sup>st</sup> September. Schedules are available from outlets in Reeth and Muker. Or call 886564 for a copy. Entry closing date is Wednesday 18<sup>th</sup> August.

COULD THIS HAPPEN TO YOU?

Reeth and Grinton First Responders have been called to over 40 medical emergencies, providing support and treatment until the arrival of the ambulance. But we no longer have enough Responders to maintain this service. Could you spare one evening a week or part of a weekend? It would be very disappointing if we were no longer able to provide this potentially life-saving service for our community. For more information, please contact Tony on 01748 884192 or email [attwood541@btinternet.com](mailto:attwood541@btinternet.com).

MUKER INDOOR BOWLS CLUB.

"Muker Indoor Bowls Club starts its new season with the AGM on Wednesday 8th September at 7:30pm. Come and join us at Muker Public Hall for some bowling fun, held every Wednesday at 7:30pm starting September 8th. New Members and Guests welcome - no experience needed!"

CONGRATULATIONS

To Ella Ellis on passing with merit her grade five Associated Board practical examination on descant recorder

FROM STAGE TO SCREEN

On Saturday 16th October at 2pm and 7:30pm. Following the success of the Pavilion Variety Show in 2009 comes 'From Stage to Screen', raising funds to support the children of Arkengarthdale and Reeth & Gunnerside Schools. A 60-strong cast will bring you highlights from best-loved shows, musicals, films and TV (including

Janet Seymour Dance School, Reeth Brass, soloists, 5 Pearls & A Piano and The Artyfacts). Tickets available from mid-September from Reeth Post Office, adults £6, Under 16s £3.

REUNION

There will be an Old Scholars reunion of RICHMOND COUNTY MODERN SCHOOL 1961-1966. It will be held at the KINGS HEAD HOTEL RICHMOND on Friday 6th August from 7pm onwards. Please come and meet old acquaintances for a drink and a chat.

## SWALEDALE Landscapes

### AFFORDABLE LANDSCAPING

Elegant Garden Features  
Simple Seating to Garden Makeovers.  
**A full landscaping service**  
at down-to-earth prices

### WATER & WILDLIFE GARDENS

Beautiful Pools, Streams & Waterfalls  
Wildlife Gardens and Plants  
Bird, Bug and Mammal boxes  
Feeders, Food and more  
**Wildlife Advice Service**

### FOR ALL YOUR GARDEN NEEDS

Wall-repairs. Patios & walls pointed. Ponds  
cleaned. Grass seeding. Paths cleaning.  
**Garden Repair & Maintenance**

**Call SWALEDALE on 01748 880206**  
**e-mail:- [swaledalelandscapes@sky.com](mailto:swaledalelandscapes@sky.com)**  
**Est 1998 - Northern Dales**

SEPTEMBER DEADLINE  
AUGUST 18TH.

**ST. GEORGE'S CRYPT - LEEDS**

The Churches of our parish are collecting on behalf of St George's Crypt in Leeds who help to care for homeless people however this situation has arisen. The Crypt have advised us that at the moment they are most keen to collect jars of instant coffee; bags of sugar; longlife/uhf milk; tins of powdered milk; jars of coffee mate and tinned food - most especially protein meals such as meat, whole meals & beans. There is a collection point in each of the Parish churches - namely: St Mary, Muker, Holy Trinity, Melbecks; St Mary Arkengarthdale and St Andrew, Grinton if you should like to contribute to this charity. More information about the work of the crypt can be found on their website - [www.stgeorgesleeds.org.uk](http://www.stgeorgesleeds.org.uk) Many thanks on behalf of the Crypt if you are able to help support their work. Susan Allison - Hon Sec to Swaledale with Arkengarthdale PCC

**WHATS ON IN REETH MEMORIAL HALL**

**Friday 20th August** - Kieran Halpin - support - The Candlelite Band. Since 1979 Kieran Halpin has recorded 17 albums, one live DVD and published 2 songbooks with 50 songs in each book. He is a successful songwriter with many of his songs covered by other artists such as Vin Garbutt, Tom McConville, The Battlefield Band, Flossie and the late John Wright. He has recorded albums in his native Ireland, Scotland, London, Nashville and Sydney. £10 (£12 door) Tickets from Reeth Post Office. For further details or  
r e s e r v a t i o n s   e m a i l   o r

ring John Little - 01748 884759 or visit our website [www.reethmemorialhall.co.uk](http://www.reethmemorialhall.co.uk)

**Saturday 25th September** - Cloudstreet perform New Australian folk music, a combination of Anglo-Celtic and Australian traditional songs and tunes, coupled with trad-styled original songs. They take traditional folk song, shake it vigorously, add exquisite harmonies and a mountain of fun to produce heart-lifting shows that excite, entertain and delight. £10 (£12 door) **Saturday 9th October** - Tams & Coope - support - Exiles From Eden - Following the cancellation of January's gig due to severe snowfalls, we're delighted to have this new date. John Tams was a member of the Albion Band and Home Service. He is best known for his work at the National Theatre and as Rifleman Daniel Hagman in the Sharpe television series. He is a five times winner of the BBC Radio 2 Folk Awards. Tams & Coope were Best Duo at the BBC Radio 2 Folk Awards 2008. £12 (£14 door) **Friday 15th October** - Andy Irvine - support Andy McLaughlin - Andy Irvine is a musician, singer and songwriter. He has been part of Sweeney's Men in the 60's, Planxty in the 70s and THE Irish super group, Patrick Street, in the 80s. £12 - (£14 door) Tickets from Reeth Post Office. For further details or reservations email or ring John Little - 01748 884759 or visit our website [www.reethmemorialhall.co.uk](http://www.reethmemorialhall.co.uk)

**SAVING USED STAMPS**

Sue Thompson is still collecting used stamps for the charity RNIB. Please leave, with at least 1cm of paper round them, at Reeth Post Office, Swaledale Woollens or Eat Lea, Muker. Thanks for your support.

**Calvert & Jenkinson Ltd**  
**Building Contractors**



**All aspects of building  
 work carried out from  
 renovation to new builds,  
 plastering to roofing.**

**Tel: 01748 886 224**  
**01748 886 597**  
**Email: cjbuidersltd@gmail.com**

**Company No: 6769263**

**Rowleth End**  
**Low Row, Swaledale**

Now under new ownership

Relax in Comfort and Style  
 4 star (silver award) rating  
 Quality Accommodation  
 Evening Meals and Licensed Bar  
[www.upperswale.co.uk](http://www.upperswale.co.uk)

**01748 886327**

Looking for local staff  
 Summer and winter  
 Flexible working  
 Mainly mornings and evenings  
 Give me a call (or drop by) if interested:

**Roger Tuckett**

**St. Mary's Church, Muker**

**A FESTIVAL OF BIBLICAL GARDENS**

in and around the Church

on Saturday 28th August from 10am to 5pm

on Sunday 29th August after the Service at

10.30am

on Bank Holiday Monday from 10am to 5pm

and SONGS OF PRAISE with MUKER

SILVER BAND

at 6.30pm on Sunday 29th August.

All welcome. Donations to Church funds  
 invited.

**Hazel Brow Farm, Low Row**

Opening Times and Events

Open 2<sup>nd</sup> Apr – 5<sup>th</sup> Sept  
 Tues, Thurs, Sun & Bank Hols  
 11.00am – 4.00pm

Meet & feed the animals,  
 Treasure Hunt,  
 Walks, Tours, Café and more!  
 Plus this months events:-  
 Novelty Dog Show, Rabbiting  
 And Cheese Making.

Further information including seasonal events  
 and demonstrations at

[www.hazalbrow.co.uk](http://www.hazalbrow.co.uk)

Or telephone 01748 886059 / 886224

**THE CB INN, ARKENGARThDALE**  
**& THE PUNCH BOWL INN,**  
**LOW ROW**

ARE LOOKING FOR WAITING ON STAFF &  
 WASH UPS FOR EVENINGS AND  
 WEEKENDS. IF YOU ENJOY WORKING IN  
 A FRIENDLY ENVIRONMENT WITH  
 EXCELLENT RATES OF PAY THEN GIVE  
 EMMA OR LESLEY A CALL ON

(01748) 884567/886233

Arkengarthdale CE School News  
Summer 2010

We seemed to have hurtled with excitement and enthusiasm through another school year with a host of new activities and experiences. We now have 40 children on roll which is amazing as only 2 years ago I was worrying how to save money and maintain staff. This just illustrates how numbers in small schools can fluctuate dramatically and how myself and my Governors have to work creatively to cope with this. We say goodbye to Ella, Isis, Megan, Michael and Olivia and wish them well on their next educational step. They have worked tirelessly throughout their time at Arkengarthdale School to promote and support us and make us very proud of them. Their presence will be missed. Yr 5 and 6 had a super time on their residential outdoor activity trip to Lakeside in April. Many boundaries were pushed and new challenges met. We were also very pleased to meet our friends there for the first time from Calderdale with whom we had been corresponding. We had a great social evening with them designing, modelling and commentating on the latest fashions with a black bin liner! We were also very pleased to welcome year 5 from St Mary's School in Hunslet who joined us on a very cold day for outdoor challenges which our yr 5 and 6 organised. The whole school then visited Leeds and had a wonderful day experiencing a very different school in a very different location. We were made very welcome by both staff and children and this is a link we are going to maintain. We were all immersed totally for a week in colour as we embarked on a science/literacy week

entitled 'Colour My World'. What fun we had dressing in a different colour each day, watching a different colour experiment each day, making and eating edible colour wheels, making Benhams disks, seeing if we could be as clever as animals at camouflage and making fruit kebabs and recognising their colours in french. These are just to mention a few of the things we got up to. We started the week with a fantastic, inspiring colour assembly given by Graham White and ended with our own assembly after which parents could have a go at some of the activities. Congratulations to Jackie Hodgson who won our colour quiz. All the school have thoroughly enjoyed our creative theme this final term which has been based on Space. Key Stage 2 through 'Light Years Ahead' have looked at early flight and even debated whether Icarus was really a myth, studied the history of flight and then investigated our own solar system. Key Stage 1 have had an exciting space station in their area and quite often we have seen astronauts wandering around! As you can read we have as usual, been very busy and as we approach our final week I feel sure all children and staff alike are ready for a well earned rest. All that remains is for me to thank most sincerely my very hard working staff and my ever enthusiastic children as well as everyone else who supports us. Have a good holiday.

**CAKE STALL & BRIC A BRAC STALL**

There will be a Cake stall hosted by Holy Trinity, Melbecks for Parish funds on Friday 13th August on Reeth Green. Also Bric a Brac stall will be held on Bank Holiday Monday 30<sup>th</sup> August on Reeth Green.



**Complete Mobile Dog Grooming Salon**  
**All grooming carried out on board**

- We come to you • No travel stress
- No bathroom mess
- A calm & safe environment for your dog
- From a warm refreshing bath to a complete grooming experience
- City & Guilds qualified groomer
- Fully insured
- All areas in & around The Dales considered

Sandra Heeney  
 Phone: 01969 623653  
 Mobile: 07596 234375  
 Email: sheeney@btinternet.com

Access to power required for the drying process.

**THE SWALE**

The Story Of A Fascinating River  
 By David Morris  
 £8.95 from Castle Books or The Tourist  
 Office Richmond, Swaledale Woollens  
 or Swaledale Museum

**Other titles:**

The Dalesmen of the Mississippi River,  
 Wycliffe, The Honour of Richmond etc.  
 Enquiries : morswale@gmail.com

**Holiday Cottage - Laykin, Low Row.**

Gorgeous 4 bedroom, 3 bathroom cottage.  
 Modern and cosy, fully equipped.  
 Set in elevated position with fantastic  
 views.

Quiet location, garden, patio, and parking.  
 Great walks straight from the door.

Children welcome.

Tel. Louise on 07767 883926

[www.stayinswaledale.co.uk](http://www.stayinswaledale.co.uk)



**BUCK HOTEL**  
 REETH • DL11 6SW

**Five Quality Cask Ales**

We have Black Sheep, Copper Dragon Best,  
 Timothy Taylor's and Deuchars as regulars with  
 guest ales each week.

**Home Cooked Food**

We regularly update the Lunch and Evening  
 menus and always have a good selection of  
 Vegetarian meals

**En Suite Accommodation**

Ten well appointed rooms all with  
 bath or shower

**Events At The Buck**

We are currently planning a schedule of quality  
 entertainment at the Buck with full details on the website.

**Monday 16th August - £10.00**

**JOHN OTWAY**

*Zany rock star and hit maker.*

**Sunday 22nd August - £5.00**

**MARTIN HARLEY**

*Outstanding contemporary lap-slide guitarist who  
 dips into the blues.*

**Friday 1st October - £10.00**

**IAN PARKER BAND**

*Classy contemporary to blues.*

**Friday 12th November - £13.50**

**THE STRAWBS**

*Legendary folk-rock band.*

**Sunday 28th November - £12.50**

**SNAKE DAVIS & JIM DIAMOND**

*World-class Sax and Soulful song.*

**Tuesday 14th December - £12.50**

**NINE BELOW ZERO**

*RE&B and Blues from an incredible live band.*

Full details of every thing at the Buck is online at

**[www.buckhotel.co.uk](http://www.buckhotel.co.uk)**

**01748 884 210**



## QUIZ

A test for your memory! All the answers to these problems are Television Programmes, but beware some are quite old! Answers next month.

- 1 Cut glass labyrinth
- 2 Bagette, brioche
- 3 Straightforward Polaroid
- 4 T.V.'s fat people
- 5 Let go of the late ass
- 6 Plantain cleave
- 7 Institution contest
- 8 Prepared unwavering chef
- 9 Tread foot digit with male hei
- 10 Scots like it with salt
- 11 Tommy, Tommy
- 12 Wizardly carousel
- 13 Heart and one step
- 14 Damaged spires
- 15 Pretty flying insects
- 16 Here, there, everywhere
- 17 Sole forest inspector
- 18 Aboard coaches
- 19 Scarlet gnome
- 20 The experts

## Answers for last month's quiz :

1. Sad saint - *BLUE PETER*
2. Have with fish—*CHIPS*
3. Stream flank—*BROOKSIDE*
4. Hazard rodent—*DANGEROUS*
5. Cheerful 24 hours -*HAPPY DAYS*
6. Cost is not left—*THE PRICE IS RIGHT*
7. Next door either side—*NEIGHBOURS*
8. Uncooked leather—*RAWHIDE*
9. 5.4.3.2.1 - *COUNTDOWN*
10. Gladstone cat—*BAGPUSS*
11. Could be dropped—*THE CLANGERS*
12. Artefacts street cavalcade—*ANTIQUES ROAD SHOW*
13. What football teams do every 2 weeks—*PLAY AWAY*
14. Finest person in the frame - *CELEBRITY SQUARES*
15. Big gun—*CANNON*
16. Farm knoll—*GRANGE HILL*
17. Lights in the road—*CATS EYES*
18. Go to first floor - go to basement—*UPSTAIRS DOWNSTAIRS*
19. Aquatic arm—*FLIPPER*
20. Aristocrats of dangerous situation.-



**Don't Forget**

**REETH SHOW DAY**

**AUGUST 25TH 2010**

**Prospectus  
Out now  
at local outlets**



COME AND SEE US AT  
THE REETH AND  
MUKER SHOWS!

Some of the team here will be taking Reeth Medical Centre's services 'on the road' to both the Reeth and Muker shows. Roll up! Roll up for blood pressure and cholesterol tests, as well as trying your hand at basic life support. Would you know what to do if someone stopped breathing, or had a suspected heart attack? Here's your opportunity to find out how you might keep someone alive until medical help arrives. Kim will be doing her bit too with advice on Chlamydia testing, stopping smoking and lung function tests, and both she and I will be on hand to offer general health advice. So look out for our tent at the shows. We look forward to seeing you.

#### YOUNG PEOPLE - DIFFICULT CONVERSATIONS AND STRAIGHT TALKING

Our latest Newsletter is available for you to collect from the Medical Centre, but I think its content is worth repeating here. Many younger people may be scared to talk to adults or someone they perceive to be 'in authority' like a doctor when faced with concerns about a sexually transmitted disease or an unwanted pregnancy. In fact, friends and 'Facebook' buddies may be the first to become confidants rather than parents or health-care professionals. Fear of condemnation and loss of confidentiality mean that young people who need help quickly may find themselves with even greater problems than they anticipated. *"I can't tell my Mum and Dad. They'll throw me out"* - An understandable

fear but highly unlikely. Most parents just want to help and protect their children. But if you can't initially face speaking to a parent or close family member, here are some good reasons why you should come and see the doctors or nurse as soon as you can. Chlamydia is the most common sexually transmitted infection (STI) in the UK and rates are increasing. Chlamydia can be passed on by any form of sex and most people (up to 50% of males and 70% of females) will have no obvious signs or symptoms, so will be totally unaware that they or their partner(s) have the infection without having a test. The National Chlamydia Screening Programme (NCSP) has found that approximately 1 in 14 young people under 25 years who are tested carry Chlamydia. Chlamydia infection can be diagnosed easily (young people can do the test themselves), and treated effectively. It is easy to test for Chlamydia, usually by a simple urine test that is available here. Kim, our nurse practitioner will be only too pleased to offer advice and help in the strictest confidence. For those who test positive, treatment is easily arranged at a convenient time and place, and usually just consists of four antibiotic tablets taken as a single dose, which is provided free by the screening programme. Test results are delivered by letter, phone or by the most popular method - text messaging, usually taking between one to two weeks. Chlamydia, like other STIs can have long lasting effects if not detected early - including reducing your ability to have children later on at a time of your choosing. Pregnancy Discovering you are pregnant when you don't want to be can

be a very scary and lonely situation. Pregnancy testing kits are readily available over the counter, but what do you do once you know or suspect you are pregnant? Again, in the strictest confidence the doctors or nurse can give you advice to help you make the right decisions about your pregnancy, and protect your own health in the process. You may even think you are at risk of becoming pregnant and not be fully aware of the latest contraceptive methods to prevent this unwelcome situation. Sometimes people are just too scared to ask. Do come and see us here at the medical centre, or you can email Kim, our Nurse Practitioner on: [kim.chown@gp-b82622.nhs.uk](mailto:kim.chown@gp-b82622.nhs.uk). You need have no fear of criticism or judgement, or that anyone else will hear about your discussion. All the best Mike Brookes and the Team

### **WHAT'S ON AT THE DALES**

#### **COUNTRYSIDE MUSEUM IN AUGUST**

**Yorkshire Dales National Park Annual Summer Exhibition 16 July - 5 September.** A family exhibition with lots of activities for all ages, on the subject of Cultural Heritage and exploring the theme of treasured possessions. What do museums have in their collections? and what do you have as a treasured possession in your life? 5 August 12:30 - 13:30 **Birds of the Yorkshire Dales** One of a series of lunchtime lectures exploring the wildlife of the Yorkshire Dales. Free with Museum entry ticket 6 August 20:00 - 22:00 **Batwatch** A talk followed by a walk at dusk looking for bats near buildings and riverside. Wear warm clothing and stout shoes. Bring a torch, midge repellent and a bat detector, if you have one. £3, booking

essential 10 August 14:00 - 16:00 **Dyeing Flowers Workshop** Children's event using plants to dye wool and making a small felt flower. Ages 5 to 8 years must be accompanied by an adult Children £3, parents/carers free, booking advisable 11 August 14:00 - 16:00 **Discover & Do: Textile Crafts** Traditional textile crafts for children. Ages 5 to 8 years must be accompanied by an adult Children £3, parents/carers free, booking advisable 12 August 12:30 - 13:30 **Woodland Birds of the Yorkshire Dales** One of a series of lunchtime lectures exploring the wildlife of the Yorkshire Dales. Free with Museum entry ticket 17 August 12:30 - 13:30 **Red Squirrel Conservation in the National Park** Lunchtime lecture. Free event 18 August 14:00 - 16:00 **Discover & Do: Textile Crafts** Traditional textile crafts for children. Ages 5 to 8 years must be accompanied by an adult Children £3, parents/carers free, booking advisable 19 August 12:30 - 13:30 **Upland birds of the Yorkshire Dales** Free with Museum entry ticket 22 August 10:30 - 16:30 **Pathfinder** Under 16s to be accompanied by an adult £5 adults, children free, booking essential 24 August 14:00 - 16:00 **Drystone Walling Demonstration** Free event 25 August 14:00 - 16:00 **Discover & Do: Seed Detectives** Discover, collect and learn all about the different types of seeds you can find in the Museum garden. Make your very own seed packets with instructions for sowing and take them away ready for next year's planting. Part of the Flowers of the Dales Festival. A fun and very practical activity session for 8 to 12 year olds. Children £3, parents/carers free, booking advisable 26 August 12:30 - 13:30.

**THE SCHOOL HOUSE  
REETH**  
*The House on the Hill*

**Bed and Breakfast**

Stunning views  
Beautiful en-suite rooms  
"Outstanding hospitality"

Peter and Janice Freedman  
look forward to welcoming you.

Tel: 01748 884284  
Email: [info@theschoolhouse-reeth.com](mailto:info@theschoolhouse-reeth.com)  
[www.theschoolhouse-reeth.com](http://www.theschoolhouse-reeth.com)

**ANDY MALTON LTD**

**General Building Contractor**  
**Plastering / Roofing / Dry lining /**  
**Ceiling Work / Pointing / Guttering**

**MOST BUILDING REPAIR WORK  
CARRIED OUT  
(Estimates Free)  
NO JOB TOO SMALL**

**Tel : 01748 - 884621**  
**Email : [amalton56@fsmail.net](mailto:amalton56@fsmail.net)**



**DORANT**



**Bridge Garage  
Reeth**

**01748 884245**

**SALES  
SERVICING  
and  
M.O.T' S**

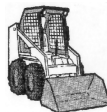
[www.dorant4x4.co.uk](http://www.dorant4x4.co.uk)

"GOT A CAR TO SELL, CAN WE HELP?"

This is your local news magazine, please  
send to us any articles, adverts,  
informative pieces for inclusion.  
Pictures always wanted for the front.  
Contact the Editor or any of the  
management team.  
Addresses on page 2.

**R.W. STONES**  
**PLANT & AGRICULTURAL HIRE**

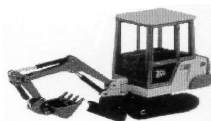
- 360° Excavator Hire
- Groundworks/Site preparation



**ROUND BALING  
SERVICES  
HAY STRAW SILAGE**

**BOBCAT HIRE**

**01748 884360  
01748 884718  
07974 406647**



traditional leaded lights  
& bespoke stained glass  
designed/made/installed.  
repairs & restoration

Tel: 01748 884824  
[www.kymes.co.uk](http://www.kymes.co.uk)

**WENSLEYDALE TREE & HORTICULTURAL SERVICES (Est. 1995)**
**DAVID ALLEN ( HND Arboriculture)**

Fully insured (£5million)

Professional tree work: felling, crown thinning etc undertaken to BS 3998

Logs for sale. Petrol log splitter for hire.

Woodchipper for hire. Woodchips for sale

Tree stump removal (stumps ground out)

Hedge establishment and maintenance. Supply /planting of forest and ornamental trees

Fruit tree maintenance. Pesticide applications (weed control services)

Also, fencing, trelliswork, pergolas, arches.

Tel. 01969 667364, Mobile 07811 576108 or

e: mail - enquiries@treesinwensleydale.co.uk

[www.treesinwensleydale.co.uk](http://www.treesinwensleydale.co.uk)


For all advertising in the Gazette please  
contact the editor on 01748  
886111/886505 or Email:  
[GML1@gallowstop.fsnet.co.uk](mailto:GML1@gallowstop.fsnet.co.uk)

**SWALEDALE CATERERS**

Any event catered for.

All home cooked food.

No problem, we travel.

Waitresses provided, or, if preferred, we  
can just deliver food to your door.

**Lisa Porter on 01748 886434**

# SWEEPIN' THE DALES

YOUR LOCAL TRADITIONAL

## **CHIMNEY SWEEP**

TAKE THE WORRY AND MESS OUT  
OF HAVING YOUR CHIMNEY SWEEP  
TAKE ADVANTAGE OF THE FOLLOWING

- Clean, safe and friendly
- Minimum disruption to your daily routine
- Bird guards, cowls, rain caps etc fitted
- Fully insured
- Certificates issued
- Stove servicing/repairs/spare parts
- Advice freely given

Avoid the autumn rush- book early

To make an appointment all you have to do is phone the  
number below and ask for Simon or Elaine

**01765 688078**
[www.sweepinthedales.co.uk](http://www.sweepinthedales.co.uk)
**Charity Evening**
In aid of
**The Mowbray Suite And**
**The Alternative Therapy Treatment Room**
**Organized by Lisa Porter and Friends**

Dear All, In May 2009, I was diagnosed with breast cancer, which then went on to develop into secondary cancer, and so my journey through the Friarage Hospital began. Firstly the Scott suite to which I can not speak highly enough of. Then I went on to chemotherapy at the Mowbray suite, with help from the Alternative Therapy room. My Treatment is still on going, now I feel it is time to give something back to them for all the care and understanding that they gave to me. I have had close friends who also had connections and feel the same. I have decided to hold a charity evening on Saturday 4<sup>th</sup> September at Muker in Swaledale; this will include a disco, food and then followed by an Auction of Promises. It would be greatly appreciated if you were able to donate to this evening in some way. Yours faithfully, **Lisa Porter-01748 886434**

**NURSE CHERRY**  
**HOLIDAY COTTAGE**

Beautiful 2 bedroomed  
 Holiday Cottage in Reeth  
 Down quiet back lane  
 Private parking  
 Cottage Garden  
 All amenities in walking distance  
 Children Welcome  
 Sorry No Pets or Smokers  
[www.cottagesinreeth.co.uk](http://www.cottagesinreeth.co.uk)  
 Mr. & Mrs. Waller  
 Tel 01904 798127 or  
 07817 128655

**Geoff Braithwaite**

**Property Maintenance**

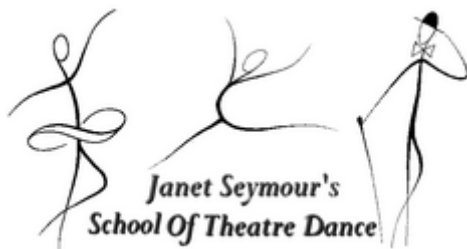
Painting and Decorating  
 Kitchen & Bathroom Fitting  
 Wall & Floor Tiling  
 Pointing & Patios  
 General Repairs  
 Fast, Friendly, Reliable Service  
 Quality work Guaranteed  
**Tel : 01748 886822**

**The Chyll**

**Bed & Breakfast**

**Arkle Town, Arkengarthdale**

Set in wonderful countryside,  
 With spectacular views of Arkengarthdale  
 All bedrooms en-suite with colour TV  
 For details contact Mrs. Sheila Good  
 on 01748 884353 or Fax 01748 884015



From September 2010 we will be offering:

Beginners Tap Classes for Adults,

Reeth Memorial Hall

Mondays 5:30pm-6:15pm

Ballet for Boys and Girls

from the age of 3yrs.

Reeth School Hall

Fridays 3:45pm-4:30pm

Modern Dance for Boys and Girls

from the age of 5yrs.

Reeth School Hall

Mondays 3:45pm

For further information and to reserve a  
 place please contact: Janet Seymour LRAD

tel: 01748 884 677 mobile: 07971 282 566

e-mail: [janetseymour@arcor.de](mailto:janetseymour@arcor.de)

[www.swaledaledance.co.uk](http://www.swaledaledance.co.uk)

**TRAILER HIRE IN SWALEDALE**

14 foot Triaxle Graham Edwards Flat  
 Bed Trailer complete with ramps and  
 winch for hire.

Rates £45.00 per day, also L/R  
 Discovery and driver available if  
 required.

Tel. J.L. TRADING on  
 07889 725349

**REETH SHOW DAY**  
**WEDNESDAY**  
**AUGUST 25TH 2010**

**Garners of Bedale**



**Any order  
Large or small  
We pledge to deliver  
them all!**

*High Class Fruit, Vegetables  
and Dairy Products*

Shop Tel/Fax: (01677) 423193  
24 hour Ans'phone (01677) 424896

## REETH BAKERY

### Silver Street, Reeth.

Swaledale's only real working bakery where virtually everything is handmade on the premises. Free Range eggs, local butter, milk, and many other quality and organic ingredients used.

Tea Room and Bakery open every day throughout the summer.

Also available are Handmade Cakes, Biscuits, Speciality Organic Bread, freshly cooked pies and pasties, Swaledale and Wensleydale cheeses.

Fresh sandwiches made to order.

Orders welcome.

For mail order please

Tel. 01748/884735 or 884500

or Email : [jhc@reethbakery.co.uk](mailto:jhc@reethbakery.co.uk)

**PATRICIA**  
**DAIRY COTTAGE, LOW ROW**  
**Experienced in both Men's and Ladies**  
**sewing alterations.**  
**Most sewing tasks undertaken**  
**'Will come to you'**  
**01748 886905**

**CHARMING OLD COTTAGE IN THE  
CENTRE OF REETH (sleeps 6+)**  
well placed for all the village amenities.  
Open fire & background heating, fully fitted  
kitchen, dishwasher, fridge / freezer etc.  
Two bathrooms 2 dble bedrooms, one twin  
bedroom and attic play area fourth  
bedroom with three single beds.  
(Cot available).  
Private, secure, rear courtyard area  
with patio table & chairs.  
Dogs welcome.  
Contact Denyse on 01740 631470. or  
e-mail [denyse00@btinternet.com](mailto:denyse00@btinternet.com)

*The Bridge Inn*



*Grinton, Richmond*

**DL11 6HH**

**Tel.01748 884224**

**Traditional old coaching inn  
serving quality food all day,  
every day.**

**Restaurant with extensive a`la  
carte menu, award winning ales  
& fine wines.**

**Recommended in 'The Good  
Pub' & 'Good Beer' guides.**



Outstanding fresh food served in a warm & friendly atmosphere.

19 en-suite bedrooms with amazing views.  
'Terrace Room' available for dinners, weddings or conferences.

Lunch 12pm ~ 2pm Dinner 6.30pm ~ 9pm

**Tuesday 10<sup>th</sup> August**  
**Fish Night**

**Friday 20<sup>th</sup> August**  
**Early Bird Menu - 5pm till 6.30pm**

For further details or to reserve a table  
Telephone (01748) 884567  
Website: [www.cbinn.co.uk](http://www.cbinn.co.uk)

### MENINGITIS UK

Trail through Swaledale and Arkengarthdale raising money for Meningitis UK. Sheets £2 each are available from the Farmer's Arms, Muker or the Bottom Shop Reeth (Reeth Village Store)

The trail takes place between 29th July and the 6th August.

For more information contact Rachael Duck on 07805369367.

### APOLOGIES

The Editor apologises for the lateness of the Gazette last month which was due to massive printing equipment failure which I could not repair and so it necessitated three visits from the engineer to correct. As for this month, I've been on holiday!! Sorry folks. GML

# Curiously,

most insurers don't have a branch in Leyburn, but at NFU Mutual...

## We do.

Call us for a car, home or business quotation on (01969) 625593.  
[www.nfumutual.co.uk/leyburn](http://www.nfumutual.co.uk/leyburn)

Herriot Court,  
Leyburn Business Park,  
Leyburn, DL8 5QA



We do right by you

Agent of The National  
Farmers Union Mutual  
Insurance Society Limited.

## HAZEL BROW FARM LOW ROW

Hazel Brow's celebration and 'get together' on 18th August will incorporate an informal talk on past farming methods in the dale with Harry Petty at 7.30pm in the Visitor Centre. There'll also be a chance to see the newly installed Mink Raft and find out who's been visiting it!

A brief open general meeting will be held at 7.00pm.

Come along and join us, all welcome.

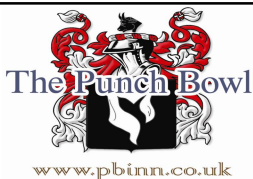


THE SWALEDALE MUSEUM

Don't forget the Friends of the Museum talk on 11th August by Dave Weedon, on 'Pioneering Photographers of the Yorkshire Dales 1840s-1914', including Swaledale. From 2.30 pm in the Museum he will be happy to take a look at the photographs (covering the period of his talk you might like to bring in to date and discuss. His talk begins at 7.30pm as usual in the Museum. We also have a SPECIAL LECTURE by David Carlisle on Tuesday 17th August, which we will be holding at Fremington Sunday School at 7.30pm. The gripping title is: 'A gruesome discovery'. In 1964 a decayed body of a man was discovered in a dales lead mine. How long had he been there, who could he be, and was there a Swaledale connection? Come and find out. Tickets booked in advance £3, on the door £4. There is a second chance to hear Reuben Frankau's 'The Bus Up the Dale Part 2, The Rise and Fall of Percivals'. As we had to turn so many people away in May, we are repeating this talk on Wednesday 1 September, in the Museum at 7.30pm. Booking is advisable to secure a seat. On September 11 Professor Geoff Coyle will be giving a lecture in the Museum at 7.30pm based on his recently published book 'The Riches Beneath our Feet How Mining Shaped Britain'. You may have seen excellent reviews of it in the national press. We are not a little honoured that Oxford University Press should be sending him to us! Here is your opportunity to meet him, hear him and get a signed copy of his book. You can book a seat by contacting Helen, £3 Friends, £4 visitors - all welcome. For all our knitters,

the Knitting Cafe will meet at the Museum at 2pm on 23 August, and 27 September. Those who attended the Knitting Workshops in 2009 and 2010 might like to know that Nancy Bush is back and we are having a party for her on 5th August at 7.30 pm in the Museum. Bring a contribution to refreshments! The Museum is delighted to be working with 'LIFE THROUGH THE LENS IN THE YORKSHIRE DALES', a photographic team visiting Swaledale and Arkengarthdale 11-18 September. Roughly a dozen photographers of a wide variety of backgrounds and skills will live together in a small village in Arkengarthdale in order to develop a collective impression of one of England's most cherished landscapes: the Yorkshire Dales. Working as a team, these image-makers will endeavour to "live exposed" by instigating a variety of photography-driven activities and events, exploring the region first-hand through image-making and working to tell stories about everything from its history to geology to culture. Along the way they will record and share pieces of their own experience as well as meet, discuss, and collaborate their efforts with the local community. Dubbed Exposure: England, the culmination of the week will see selections of the photography shared locally, and afterwards far beyond. Partnership with the Swaledale Museum in Reeth has been established to further both the fieldwork and archival aspects of the project. All photographers, regardless of age or experience, are encouraged to apply. Several scholarships will be made to applicants based on submission merit.

*Cont. on page 18*

**Low Row**

'Offering freshly prepared locally sourced food in a relaxed & informal environment'

Open Daily for Lunch & Dinner  
Traditional Carvery every Sunday  
11 En-suite Bedrooms with  
spectacular views of Swaledale

**STEAK NIGHTS**

Tuesday 3rd & 17th August  
Tuesday 7th & 21st September

Telephone: (01748) 886233

**For all advertising in the Gazette please  
contact the editor on 01748  
886111/886505 or Email:  
GML1@gallowstop.fsnet.co.uk**

## **G E BROWN & SON**

### **BUILDING CONTRACTORS**

All Building Work Carried Out  
Damp Proof Course & Timber Treatment  
Specialist Joinery Work

Work carried out by time served qualified craftsmen

**Telephone: 01748 886356**

*Cont. from page 17 :*

For those who have a potential topic, story, or idea in the Yorkshire Dales that they would like the Exposure: England team to pursue, they are encouraged to get in touch by emailing [england@livingexposed.com](mailto:england@livingexposed.com). More information about Living Exposed can be found at <http://livingexposed.com>. For more information about this topic, or to schedule an interview with Jesse, please call 07818 167687 or email [jws@livingexposed.com](mailto:jws@livingexposed.com). Come and see the Museum, stay in our cottage or take a look at our shop. As usual if you have any information or enquiries contact Helen Bainbridge at the Museum on 01748 8 8 4 1 1 8 or e - mail : [museum.swaledale@btinternet.com](mailto:museum.swaledale@btinternet.com), and don't forget to check our website [www.swaledalemuseum.org](http://www.swaledalemuseum.org).

### **Got time to spare and skills to share?** **Hudson House Needs You!**

Volunteers required to help us serve our local community. There are various jobs in Hudson House where we need volunteer help, including front of house in the winter months. We are also looking for people with skill and knowledge that they are willing and able to pass on to others in informal classes and workshops. These skills and knowledge could also be helpful in various projects we hope to develop in the coming months, to improve the service we provide to the Two Dales and to increase our profile within the local community. If you are interested and would like to know more, please ring Graham on 01748 884485 for an initial chat.



**MARTIN TRADEWELL**  
**Qualified & Insured**  
**Bird Guards & Cows Fitted**  
 Your Experienced Dales Sweep  
 Covering Wensleydale, Coverdale  
 & Swaledale  
 No Mess, No Fuss & Prompt Service  
**01388 517045**

### *Cosy Holiday Cottage for TWO*

Peaceful location with panoramic  
views of Arkengarthdale.  
Ideal for walking or just relaxing.  
Tel. Shirley Gale 01748 884779

If you miss your Gazette you can now  
read it  
on line.

Do check it out - go to  
[www.2dales.org.uk](http://www.2dales.org.uk)

### **Add your holiday cottage to our website - FREE!**

Holiday cottages in Yorkshire – as an established family run business based in Swaledale, we provide high quality self catering cottages to discover the Yorkshire Dales National Park, North York Moors National Park and surrounding areas.

As a property owner on our website you will benefit from:

- a greater online presence;
- easier, faster and hassle free bookings;
- a greater letting income year after year.

holiday  
home  
yorkshire

Call us on **07921 218166**

E: [contactus@holidayhomeyorkshire.co.uk](mailto:contactus@holidayhomeyorkshire.co.uk)

W: [www.holidayhomeyorkshire.co.uk](http://www.holidayhomeyorkshire.co.uk)



Business Name

**R&H BUILDERS (REETH) LTD**

**COMPANY NAME/7262999**

Free Estimates

Call Guy or David

Tel/(01748) 884309/884433

Mob/07792458801 / 07812135392

Email [david.reethl@btinternet.com](mailto:david.reethl@btinternet.com)

Address

**R&H Builders(Reeth) Ltd**

**11 Place Hill, Reeth, Richmond, N Yorks, DL11 6SD**

**All works carried out by qualified craftsmen  
over 30 years experience**

**General building maintenance**

**Restoration, new Builds, Extensions**

**Roofing, Plastering, Landscaping**

**Kitchen fitting, Joinery, Tiling & decorating**

**No job too small all insurance work**



## Computer Corner

with Carol Haynes

No article this month - just a puzzle for you. The following square contains nearly 70 words and phrases associated with computers. Words are printed in a straight line horizontally, vertically or diagonally within the grid and the words in phrases are printed continuously (not separately) as a single word, without spaces. Solution will be published on my website on 31st August at [www.dalescomputerservices.com](http://www.dalescomputerservices.com)! (Visit the website to download a printable copy of the puzzle if you don't want to spoil your magazine - see latest news section on the home page). Have a good summer holiday. Carol Haynes

A	D	M	I	N	I	S	T	R	A	T	O	R	D	S	E	R	I	A	L	Y
M	I	N	T	E	R	P	R	E	T	E	R	J	S	F	C	L	I	E	N	T
O	B	J	E	C	T	O	R	I	E	N	T	E	D	W	O	R	D	P	H	W
N	W	Y	S	I	W	Y	G	I	B	A	C	K	U	P	B	L	I	C	O	N
I	D	O	C	U	M	E	N	T	N	O	S	S	P	O	O	L	D	D	S	Q
T	C	O	D	E	E	U	F	R	R	T	N	C	K	E	L	Y	N	E	T	J
O	F	O	N	T	M	E	E	P	T	V	E	M	I	G	H	I	S	Y	R	U
R	D	N	L	Z	O	V	C	U	R	S	O	R	H	I	W	S	T	A	C	K
F	B	E	W	U	R	L	U	E	S	E	R	I	N	T	E	R	F	A	C	E
P	L	M	L	E	Y	D	R	I	V	E	R	P	R	C	S	E	E	K	L	Q
E	S	A	S	P	O	Y	U	Q	C	C	S	E	C	A	W	A	Y	Q	I	X
R	G	I	C	A	H	R	H	I	T	I	R	A	D	D	R	E	S	S	N	H
L	M	L	J	F	D	I	S	P	L	A	Y	A	D	A	P	T	O	R	U	E
N	L	B	A	I	Y	A	F	T	R	A	C	K	S	C	A	C	H	E	X	D
P	E	I	V	R	B	P	M	A	P	A	C	K	E	H	K	A	P	L	E	I
U	P	T	A	S	A	O	V	E	R	H	E	A	D	Q	X	P	R	P	M	T
P	G	N	S	S	C	R	E	E	N	K	L	Q	R	I	W	A	O	A	O	O
K	I	A	M	C	B	T	B	D	B	U	J	N	N	V	A	C	G	R	U	R
B	L	X	S	C	A	N	N	E	R	Y	O	U	X	D	P	I	R	I	S	C
C	T	L	E	I	J	P	A	L	L	E	T	T	E	U	E	C	T	A	T	E
S	C	R	O	L	L	C	E	D	I	T	H	E	R	E	D	Y	M	Y	W	V

please use the 0845-60-60-247 telephone number to report any non- emergency incidents or sightings of suspicious persons or vehicles and also by simply using the telephone, situated in a yellow box, on the wall, at the front of Hudson House which will give you a direct line to the Control Room staff. I can also be contacted via e-mail at [tracielee.taylor-page@northyorkshire.pnn.police.uk](mailto:tracielee.taylor-page@northyorkshire.pnn.police.uk) if more convenient. Last month there were several reports of suspect males in vehicles looking to do Pest control in the areas of Marske and Marrick as well as possible suspect poachers of which there were two to three males seen in vehicles with dogs in the area. Whilst at a local hotel in Reeth cash and stamps were removed, possibly a two man distraction burglary, where one male was shown around the hotel whilst the other remained in the foyer. Due to some reports of possible 'distraction burglaries' we advise people when answering the front door to strangers, to ensure that the back door is secure and no valuables are left in sight. In Muker sunglasses and boots were removed from a table outside a public house which goes to show once again that any valuables should not be left unattended particularly given the current climate. One of our officers was recently successful in bringing a case to court involving two males who after pleading guilty to poaching were dealt with by the court, for the offences and subsequently fined. As part of Richmondshire Safety Partnership, two 'Safer Session' events have been organised to run alongside coffee mornings for the 16th Sept at Gunnerside Institute supported by our

*Cont. on page 21*

### Crime In The Two Dales

Firstly I would like to apologise for the absence of articles, I have now returned to work and as always will be more than happy to assist anyone as best I can ,

Cont. from page 20 : Womens Institute and 30<sup>th</sup> Sept at Quaker Close Sheltered Housing, they will take place from around 10am-12pm offering information and advice from North Yorkshire Police, Trading Standards and Richmondshire District Council. Posters will be displayed on local notice boards and I can always be contacted for further information. PCSO 5550 Taylor-Page

## Dales Computer Services

*For all your computer needs*



Repairs

Upgrades

Maintenance

Home & Small Office Network  
installation

Website design

Help and Support

[www.dalescomputerservices.com](http://www.dalescomputerservices.com)

Tel: 01969 663798 or 07891 371280



A Range of advanced hairdressing services  
Ladies and Gents of all ages welcome.

The Top Shop- Reeth: Wednesdays (late night) and  
Saturdays

Sonja's- Hawes: Mondays and Thursdays  
(both late night)

Contact Hannah Thornborrow on:  
07528423249

## REETH GARAGE LTD.

ARKENGARThDALE ROAD, REETH,  
RICHMOND,  
NORTH YORKSHIRE. DL11 6QT

### HOGGS HOT BOOT OFFER

ORION DEALER  
OR ATLAS LACE UP

ONLY £30 + vat

HURRICANE RIGGER BOOT  
STEEL TOE CAP

ONLY £38.00 zero rated  
WHILE STOCKS LAST

also

### BUCKLER DICKIES BOOTS

SAFETY AND NON SAFETY  
GREAT STYLES, GREAT CHOICES  
INC. DEALER AND RIGGER  
TRAINER AND HIKER IN OUR  
FORECOURT SHOP

**TEL. 01748 - 884243**  
**EST. OVER 60 YEARS**

### JAMES PEACOCK



**FOR YOUR COAL &  
SMOKELESS FUELS**

Approved Coal & Fuel Merchants  
Speedy & reliable deliveries of Solid Fuels  
& Oils throughout the  
Swaledale & Arkengarthdale area.

**Tel. 01969 650465**

**Fax : 01969 650888**



**HUNTER'S FOOT HEALTH CLINIC***a step in the right direction**Are you unable to cut your nails or do you suffer from ...*

- corns • callus • verrucas • athletes foot
- fungal infections • ingrowing toe nails

*Call Sheila* **01748 835732****Mobile: 07833 166 220**

Private Clinic held at Reeth Medical Centre

Registered Nurse specialising  
in Foot Health Care and Reflexology**Sheila Hunter**

RGN, MBSR Dip, SAC Dip, FHPT, SAC Dip, FHPP

**Cosy holiday cottage  
attached to owners farmhouse  
on Hill Farm in Arkengarthdale.  
Sleeps 2. No pets, E.M. on request.**

**Mrs Gladys Atkinson****Tel. 01748 - 884550****Lady's Companion Required**

Duties to include light household work  
and conversation in private house  
in the Dale

Variable weekly Hours  
to be discussed at interview

Suitable candidates please contact:  
TK, RCA, Waverley House, Bishop  
Auckland, 01388 607722

***Richmond Swaledale Folk Club***

17 New Road Richmond DL10 4QS

Saturday Evenings' Programme.

**Aug 7 at 8 p.m.**

Charity Evening - entry by donation.

**Anne Alderson & Friends in aid of Ovarian  
Cancer.**

**For tickets or further details contact  
Paul Cullen**

**01748 824150 or email:****[pact2005@clara.co](mailto:pact2005@clara.co)****[www.myspace.com/richmondswaledalefolkclub](http://www.myspace.com/richmondswaledalefolkclub)****Dawn Clarkson  
Associates****Accountants & Business Advisors**

Committed to People, their Visions, their Business

**TAX RETURNS \* BOOK-KEEPING \* PAYROLL****\* VAT \* COMPANY SECRETARIAL \*****\* ACCOUNTS PREPARATION \*****\* STARTING A NEW BUSINESS \*****\* SAGE ACCOUNTS TRAINING \*****CASH FLOW FORECASTS \* BUSINESS PLANS**

**Established reputation for serving  
Small Businesses**

**Call Dawn Clarkson  
to discuss your requirements**

**Tel: 01969 624999****Email: [dawn@dawnclarkson.co.uk](mailto:dawn@dawnclarkson.co.uk)****[www.dawnclarkson.co.uk](http://www.dawnclarkson.co.uk)**

Dawn Clarkson is licensed and regulated by the AAT under licence no 1369

**Thornborough Hall, Leyburn,  
North Yorkshire. DL8 5AB**

**BEAR COTTAGE  
INTERIORS**

**New Showroom Now  
Open in Hawes**

- ❖ Curtains & Blinds
- ❖ Furniture
- ❖ Fabric
- ❖ Gifts
- ❖ Interior Design
- ❖ Bespoke Joinery

**Stockist of an extensive range of fabrics  
Mulberry, GP & J Baker, Linwood,  
William Morris, Villa Nova and  
Vanessa Arbuthnott.**

**Tel: 01969 666077****Web: [www.bearcottageinteriors.co.uk](http://www.bearcottageinteriors.co.uk)**

# FATSHEEP



*from the Dales*

**A Fantastic Little Gift & Craft  
Shop On The Green At Reeth  
Everything we sell is made in  
the**

**Yorkshire Dales.**

**Including Reeth's Own Swaledale  
Chocolate Company**

**We are also home to the  
famous Glendale Ginger**

**' 01748 880189 : [www.fatsheep.co.uk](http://www.fatsheep.co.uk)**

Hudson house l td

## Community Noticeboards

Organising an event?  
Talks, fund-raisers, concerts, open  
gardens?

Send the details to:

[themanager@hudsonhouse.info](mailto:themanager@hudsonhouse.info)

for listing on our new noticeboards,  
on the

Hudson House website.

This service is free to all local  
community groups, from July.

Tel: Graham 884485 or Jill 880013

## HEARING PROBLEMS?

**Would you like to hear what you are missing?**

Introducing the Phonak  
Audéo YES - a beautifully small  
award-winning design; yet is  
practically invisible.

Now available at three price levels the  
Audéo YES offers you a small, stylish,  
comfortable and affordable hearing  
system using today's latest technology.  
To find out more I can either post you a

brochure (including my Hearing  
Handbook) or, if you would prefer, you  
can arrange a home visit to experience  
and hear for yourself the Audéo YES.  
This will also include a  
completely free hearing test.

**Please call 0870 460 5649  
anytime, or write to me at the  
address below**

**David Mason R.H.A.D**

Roseville, West End, Ampleforth, York.  
[www.yorkshirehearingaids.co.uk](http://www.yorkshirehearingaids.co.uk)



## THE FARMERS ARMS



Muker in Swaledale, DL11 6QG  
01748 886297

[www.farmersarmsmuker.co.uk](http://www.farmersarmsmuker.co.uk)

Home Cooked Food Served  
Every Lunchtime and Evening

A Selection of  
Cask Marque Approved  
Real Ales

Traditional, stone flagged country  
pub with an open fire and a  
warm friendly welcome

## *Friends School at Reeth Trust*

Small grants are available to local  
young people, under the age of 25,  
attending full-time further education.

For an application form, please contact

*Friends School at Reeth Trust*

*Secretary,*

*c/o 2 Fife Road, Barnard Castle,*

*Co. Durham DL12 8AU,*

enclosing a stamped addressed  
envelope.

## MUKER VILLAGE

Traditional stone cottage.

Open range with background heating

3 bedrooms, 2 double one twin.

Two bathrooms.

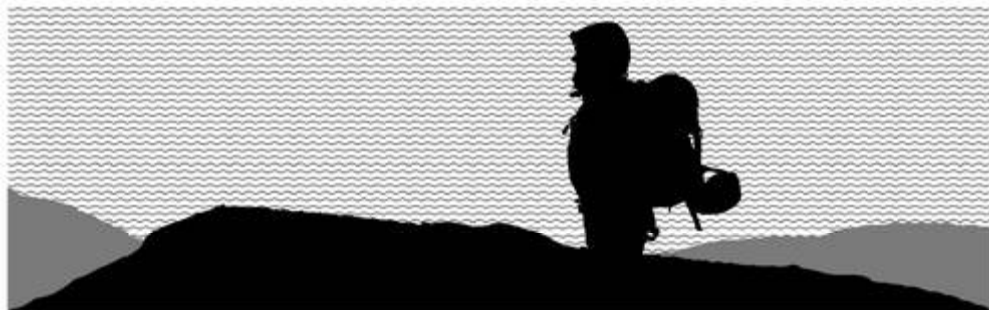
Well equipped kitchen.

No pets.

Contact Wall: 01912 662775

## SWALEDALE OUTDOORS

### CLOTHING AND EQUIPMENT



We only stock products from leading brands, ensuring  
quality and performance when it's needed most.

Berghaus Montane Sprayway Marmot OMM Inov-8

Bagshaws Yard, Anvil Square, Reeth, DL11 6TD  
(Park in the main square and walk past the Garden House)

Tel: 01748 880298

[www.swaledaleoutdoors.co.uk](http://www.swaledaleoutdoors.co.uk)



## **REETH METHODIST CHURCH OPEN HOUSE**

Each Wednesday between 21st July and 25th August, from 2pm to 4pm there will be on **OPEN HOUSE**. Do DROP IN and enjoy a friendly cuppa-tea/coffee/juice/scones. All are welcome.

### **DROP IN CENTRE**

Don't forget our **DROP IN CENTRE** is open most Fridays at Reeth Methodist Church. All are most welcome from 10am for Coffee and Company. Home Produce and Bargain Stall most weeks.

### **HARVEST CONCERT EVENING**

A lively programme of musical entertainment by

**The Thornton Watless Choral Group**

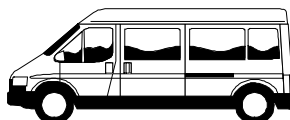
At 7.30pm on Sat.18th September.

**Don't forget the Gazette is on line.  
Go to  
[www.2dales.org.uk](http://www.2dales.org.uk)**

## **HARKERS COACHES**

LEAHOLME COTTAGE, REETH,  
RICHMOND,  
NORTH YORKSHIRE, DL11 6SF.  
TELEPHONE 01748 884533

[harkerscoaches@aol.com](mailto:harkerscoaches@aol.com)



WHEELCHAIR ACCESSIBLE MINI BUS.

MINI BUSES 7 TO 24 SEATERS

PRIVATE HIRE.

ARKENGARHTDALE SERVICE

WE HAVE A SERVICE TO CONNECT

WITH THE

SERVICE BUS AT REETH

PLEASE RING BY 6/O'CLOCK THE NIGHT BEFORE  
TO USE THIS SERVICE

TRANSPORT FOR AIRPORTS AND  
TRAIN STATIONS

FREE QUOTATIONS GIVEN  
PROPRIETORS .M.M&F.M.TERRY  
WE NOW TAKE THE TRAVEL

VOUCHERS

SUPPLIED BY RICHMONDSHIRE DISTRICT



## **Ginger Tree**

## **Holistic Health & Beauty**

Come to our beautiful treatment room, offering a full range of massage, reflexology, hapi ear candling, facials, gel nails, manicures, pedicures, make up for all occasions, including weddings

**Call for an appointment today!**

**01969 667828**

[www.gingertreebeauty.co.uk](http://www.gingertreebeauty.co.uk)  
Stone House Hotel, Hawes



**Blaeberry  
Cottage**

**Grinton, Reeth,  
Swale dale  
North Yorkshire**

[www.blaeberry.co.uk](http://www.blaeberry.co.uk)

**Spacious family cottage, sleeps 5.**

**Ideal for walking in the dales.**

**Open fire. Stunning views.**

**Pretty Garden**

**Tel. Mrs. Hudson for further details:**

**01279 654115 or**

**E- mail: [beverleyhudson@mac.com](mailto:beverleyhudson@mac.com)**

**REETH GARAGE Ltd.**

Arkengarthdale Road,  
REETH, Richmond North  
Yorkshire. DL11 6QT

**PETROL & DIESEL  
FUEL STATION  
AWARD WINNING  
FORECOURT SHOP  
MOT TEST STATION**



**FROM BRITAIN'S LEADING  
MANUFACTURER  
LIVESTOCK, FLAT BED,  
HUNTER HORSEBOX,  
TIPPING, BOX VAN,  
GENERAL DUTY PLANT  
CAR TRANSPORTER, PICK UP  
CANOPIES, UNBRAKED AND BRAKED  
SINGLE, TWIN, TRIPLE AXLE  
FROM £500 TO £5000  
IFOR WILLIAMS HAS A TRAILER TO  
DO A JOB FOR YOU  
USED TRAILERS AVAILABLE**

**SALES, SERVICE AND PARTS**

Opening Hours :  
Mon - Fri 8am - 6pm  
Sat. 8am - 1:00pm

**TEL. 01748 - 884243  
EST. OVER 70 YEARS**

**MARKET PLACE****FOR SALE**

**Kittens** 2 female & 1 male left. Born 11th June. To good homes only. £10 each. **01748 886230**

**Buffet Crampon Flute** (Paris). Cooper scale E. In red velvet lined case. VGC. £70. **01748 886230**

**Poultry House** 10x7. Free to anyone who will help dismantle it and take it away. Tel. **01748 886308**

**Wharton Bible** 1855 to Elizabeth Nicholson, Penrith. And **Wharton Book of Common Prayer**. Also **Kearton's Nature Pictures** 1910. Please contact **07919 907953**

**WANTED**

**HORSE DRAWN** or converted horse drawn farm machinery, any condition. Telephone Kirsty **01748 884280**  
**CASH PAID** any old **Lambretta Scooters**. Telephone Jason on : **01748 824925** or **07916297977**  
**Any Old Shotgun Cartridges**, Loading Equipment etc. wanted by collector **01986 892071**

**TWO DALES DIARY DATES.****AUGUST**

- 7th Concert St. Matthew's Leyburn with Leyburn Band 7.30pm
- 14th Reeth & District Annual Sports Day
- 16th John Otway TBC at the Buck Hotel
- 17th Lecture 'A gruesomediscovery' in Swaledale Museum at 7.30pm
- 18th Hazel Brow Farm Visitor Centre launch of display 7.30pm (See p.16)
- 20th Kieran Halpin with the Candlelite Band. Reeth Memorial Hall 8pm
- 25th Reeth Show
- 28th Wensleydale Show

**SEPTEMBER**

- 1st Muker Show
- 4th Charity Evening, Muker details from 886434
- 8th Muker Indoor Bowls Club AGM 7.30pm
- 12th Hardraw Scar Brass Band Festival at Hardraw all day.  
Arkengarthdale Methodist Church Harvest Festival
- 18th Concert Reeth Methodist Church. Thornton Watless Choral Group
- 26th Holy Trinity Church, Low Row, Harvest Festival Service and supper with the Parish Choir. 6.30pm. All welcome
- 29th Songs of Praise on Reeth Green with Reeth Band. 3pm

**OCTOBER**

- 16th From Stage to Screen Concert in aid of local schools. Reeth Memorial Hall 7.30pm

## 2DALES AFTER SCHOOL CLUB

Open to all children of primary school age and not just for children of working parents.  
Available Mondays, Thursdays and Fridays. Children collected from school  
(Gunnerside and Arkengarthdale by special arrangement)

Two fully experienced qualified staff, CRB checked always on duty.

Come along for fun, socialising and lots of activities

For prices and bookings please contact: Bob Fairbrother on 884323, 07971440565 or  
by e-mail: bob\_fairbrother@hotmail.com.

## Dales Property Maintenance

*All aspects of property maintenance undertaken, no job too small, just call!*

Regular Window Cleaning Service

Tiling - Painting & Decorating - Kitchens and Bathrooms

General repairs - Joinery

Garden  
Landscaping  
Garden Design  
Grasscutting - Tidying

Call 01748 886351 or 0797 6261168 email: [work@dalesholidayproperty.co.uk](mailto:work@dalesholidayproperty.co.uk)

### COMPUTER SUPPORT in YOUR HOME



Is your computer running slow ?  
Do you want to get more out of your computer ?  
My services include:-

virus removal,  
hardware and software troubleshooting;  
software installation.  
Backups ; software training; broadband issues  
and many more besides

I give professional and friendly advice.  
Very reasonable rates. Rapid response guaranteed  
Please call me : Pia Haley on 01969 663435.

Mobile number- 07814623668

### Quality Tutoring Service

Tom, Bsc Hons in Secondary Science Education;  
PGCE, PCET, QTLS;

NCFE Level Five Numeracy Diploma  
Enhanced CRB cleared.

Offers tuition in your own home in maths  
from yr6 to yr13.

Call 01748 884757 to arrange support.

REETH AND DISTRICT SPORTS ASSOCIATION

ANNUAL SPORTS DAY

SATURDAY 14 AUGUST 2010

Commence with Fancy Dress Parade  
from Reeth Village Green at 1pm

Children's Fancy Dress  
Face Painting  
Reeth Band  
Tombola



Traditional Races  
Bouncy Castle  
Tug of War  
Quoits

ALL WELCOME

If you can spare ½ hour of your time on the day to help out, please contact  
Karen Dunne on [kdunne16@aol.com](mailto:kdunne16@aol.com) or 07818 063070

Donations for tombola prizes gratefully received.  
Please leave at Dales Bike Centre

**Sarah Wilkinson**  
BSc BArch(Hons) MArch  
 Chartered Architect

07738015481  
 sarahwilko@msn.com

## MARRICK MOOR HOUSE

BED AND BREAKFAST  
 4\* ACCOMMODATION

All rooms en-suite with  
 Wonderful views  
 Private Parking  
 Shuttle to/from Reeth  
 Warm welcome assured

Please call or Phone  
 Helen or David  
 01748 884065

## *Superb Holiday Cottage* ARKENGARTHDAL

Quiet and private location with  
 excellent views

Sleeps six - centrally heated - Modernised  
 & equipped to an extremely high standard

Available all year PLUS

Low season mini - breaks

**Mrs. G. Stones 01748 884360**

## skeltonstudio

DESIGN COLOUR FABRICS

**Specialising in soft furnishings  
 Curtains & window treatments**

T 01748 821107/M 07710 692 809  
 heather@skeltonhall.fsnet.co.uk

**C. J. BEESTON**  
 Chartered Accountant  
 Personal Taxation Accounts -  
 Payroll/VAT  
 The Laurels, Reeth.  
 Tel. & Fax : 01748 - 884535

Delightful 2 bedroomed holiday cottage  
 to let in Grinton  
 (available April to October)  
 Contact us for an illustrated brochure:  
[info@colmanscottages.com](mailto:info@colmanscottages.com)  
 Mr and Mrs N A Colman

## **BAKER DEVELOPMENTS** restoration and new builds

All aspects of building work  
 Restoration and Conversions  
 • New Builds • Extensions • Alterations  
 • Insurance Work  
 • Guaranteed Woodworm  
 Timber Treatments  
 • Pointing  
 • Dry Lining Plastering & Rendering  
 Quality workmanship  
 by experienced tradesmen  
**Contact John Baker**  
 Tel 01969 650860  
 Mob: 07813 708254



**TINKERDOG  
 COMPUTERS**

PC SUPPORT FOR HOME & BUSINESS

**CALLOUT SERVICE  
 OR  
 DROP OFF & COLLECT AT REETH**  
 ring 01748 884245 | for details

# ILLUSTRATED TALKS IN FREMINGTON SUNDAY SCHOOL 2010

Aug 09	Colin Alderson	Memoirs of the Royal Household
Aug 16	John Little	Doing Time - Confessions of a Prison Chaplain
Aug 23	Tim Laurie	Archaeology: Swaledale's Ancient Landscapes
Aug 30	David Chandler	Northern Beauty: Painting the North of England 1639 - 1751
£3.00 Adults      £1.00 Children		(Including post talk Coffee/Tea & Biscuits)
Proceeds to St. Andrew's Church at Grinton in Swaledale		
Enquiries 01748 884366 : E-mail: <a href="mailto:susan.allison@talk21.com">susan.allison@talk21.com</a> : <a href="http://www.swaleview.me.uk">www.swaleview.me.uk</a>		

ELECSA

Free Estimates

Part P Approved

## IAN HALL ELECTRICAL SERVICES

Complete design, installation, maintenance and repair service of

Domestic, Agricultural and Commercial

Inspection, Testing and Certification

PAT - Portable Appliance Testing

01748 884462 or 07739 585311

[HALLhly@aol.com](mailto:HALLhly@aol.com)

JIB registered & Member of the Institute of Electrical Engineers



## Yvonne's Interior Decorator

Est 15 yrs

The Complete Service: competitive rates, free estimates, friendly advice. Discounts for O.A.Ps

SMALL LOUNGES WALLPAPERING FROM ONLY £100



**Yvonne**

**Mobile: 07838**

**378836** (Richmond)



Cafe .

Accommodation.

Bike servicing & repairs.

Mountain Bike sales & hire.

Mountain Bike Hire, Servicing, Repairs and Sales  
Ex-hire mountain bike sales, Authorised Trek Dealer for  
new Mountain and Road Bikes

Trek Full-Suspension Demo Bike fleet,  
try before you buy

**[www.dalesbikecentre.co.uk](http://www.dalesbikecentre.co.uk) Tel 01748 884908**

**physio@reeth**

marie brookes

chartered physiotherapist

*aches & pains in joints and muscles*

*back or neck pain*

*arthritis*

*sports injuries*

*exercise programmes*

*post-operative rehabilitation*

*poor mobility*

*consulting rooms at Reeth Surgery*

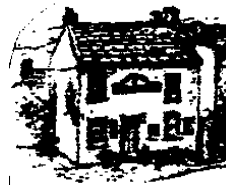
*home visits available*

*Tel: 01748 886921 or*

*07967 732290*

*www.physioatreeth.com*

**Cuckoo Hill View**



**ICE CREAM PARLOUR**  
*Situated on Reeth Green*  
 01748 - 884929

**THEA'S COTTAGE**

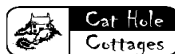
**Satron near Gunnerside**

**Newly renovated 4\* holiday cottage for 6**

**Lo stoves, beams and superb views.**

**www.theas-cottage.co.uk**

**Or tel. 01228 406701 (Yorks Cottages)**



www.catholecottages.com

*Beauty and tranquillity. Quality and care.*

Cat Hole Cottages | Cat Hole House | Thwaite | Richmond | North Yorkshire | DL11 6DR.  
 Tel: 01748 886366 | Email: judith@catholecottages.com

Discover our treasury of beautiful holiday cottages, all in Swaledale and Arkengarthdale.

Well-equipped, stylish and individual, our cottages offer holidaymakers great value for money!

We offer flexible owner packages (including cleaning), tailored to individual needs, whether you live locally or long-distance. We always need new cottages to add to our charming collection of lovely homes, so please feel free to get in touch and find out what we can offer you!

**We are looking for Housekeeping Associates to care for our cottages - flexible working at excellent rates of pay!**

Call Judith on 01748 886366

[www.catholecottages.com](http://www.catholecottages.com)

[judith@catholecottages.com](mailto:judith@catholecottages.com)

**FAT BURNING**



**FLEXIBILITY**

**Complete Body Workout**

**Sundays 10.30 - 12.00**

**at Reeth Memorial Hall**

**All levels welcome**

**£4.00 per session**

**all proceeds going to The Pavilion Fund**



**CARDIO VASCULAR**

**For more details  
 call Janet on 01748 884323**

**MUSCLE TONING**

**Sarah Louise Olney**  
**MOBILE HAIRDRESSING**

**Weddings**

**John Masters Organics**

**Hair & Skin Care**

**Colour Herbe**

**01748 884537**

# CRITCHLEY HALL Solicitors

at

## Hudson House Reeth

Critchley Hall Solicitors are pleased to bring the provision of legal services to the local people of Swaledale and Arkengarthdale by using the facilities provided at Hudson House.

Please telephone **01969 625526**  
for an appointment

- Residential property
- Home information packs
- Farms and common land
- Land Registration
- Wills
- The Elderly Client

Family Divorce & Separation

Critchley Hall Solicitors of The Office Golden  
Lion Yard Leyburn North Yorkshire DL8 5AS

[www.chsolicitors.co.uk](http://www.chsolicitors.co.uk)

Critchley Hall Solicitors are regulated by the  
Solicitors Regulation Authority

***A Warm & Friendly Service Awaits  
You at....***

# THE 'TOP SHOP'

***Reeth's Hairdressing Salon  
offering a high standard of  
UNISEX Hairdressing***

**GIFT VOUCHERS**  
at a price to suit you  
Various prices.

**Closing Times**  
All day Wednesday  
Half Day Saturday

**The 'TOP SHOP'**  
Arkengarthdale Road, Reeth  
( Opposite Reeth Garage)

**TEL. 01748 884627**

# TAKE HOME A PIECE OF THE DALES



*Drive through the  
midst, of the  
majestic, rolling  
hills of Swaledale,  
near the rare and  
beautiful hay  
medows lies  
a true gem....*

**Locally produced gifts and treasures including:**  
*band knitted & band framed sweaters,  
sheep skin rugs, gloves, slippers and even soap.*

STRAWBECK, MUKER IN SWALEDALE.  
RICHMOND, NORTH YORKSHIRE DL11 6QG  
TELEPHONE/FAX: 01748 886251  
E-MAIL: [mail@swaledalewoollens.co.uk](mailto:mail@swaledalewoollens.co.uk)  
[www.swaledalewoollens.co.uk](http://www.swaledalewoollens.co.uk)

# Cambridge House

***Countryside Guest House***  
Arkengarthdale Road  
Reeth  
North Yorkshire  
DL11 6QX

# Five Star Silver Award

**Renovated to a high standard**  
All en-suite rooms have  
spectacular views

**Warm welcome assured**

**Special long stay / winter rates**

**Please call in or phone Les or  
Sandra for a brochure**  
**01748 884633**

[www.cambridge-house-reeth.co.uk](http://www.cambridge-house-reeth.co.uk)

## Property Maintenance & General Building

Building work and property Maintenance undertaken.  
Plumbing, Tiling, Plastering.  
Kitchen and Bathroom fitting  
Joinery works.

Small jobs welcome.  
Free No Obligation estimates

Also detail plans prepared for  
Planning applications

*Contact Gary*  
Tel. 01748 886691  
Mob. 07896 147207  
E-mail [gstaines@sky.com](mailto:gstaines@sky.com)



## Home Plumbing & Heating Services

Reliable & Professional Service



- All types of heating systems designed and installed including under-floor heating.
- Gas fires including surrounds installed.
- Service and Repairs carried out on all Gas appliances.
- Landlord safety certificates.



- Oil heating systems designed and installed including new upgrades.
- Oil tank installations carried out.
- New Energy efficient Boilers
- Service and Repairs.



- Complete Plumbing service offered including:  
Bathroom suites • New Showers  
Hot water cylinders • Immersion heaters  
Washing machines • Water storage tanks
- Un-vented hot water cylinders installed.
- All Repairs carried out.

Tel/Fax 01969 667 958

Mobile 07890021829

**Greenway Cattery**

Set in the Yorkshire dales providing safe and comfortable care for your cat, peace of mind for you.

Open all year.  
Reasonable rates.

Greentodys  
Grinton  
Richmond Nth Yorks

Tel 01748 884312

**A year's subscription to the Reeth and District Gazette makes an excellent present. To subscribe please contact our subscription secretary details on page 2.**

**Garden Maintenance  
Garden Landscaping  
Garden Design  
Phone 01748 884280  
[www.bakersquared.co.uk](http://www.bakersquared.co.uk)**

All garden, landscape & tree maintenance  
All landscaping from turfing, patios, ponds  
to dry stone walling, fencing, pergolas & planting  
Fully insured professional service.  
Free estimates



## Lownethwaite Landscapes

**ALL ASPECTS OF HARD  
LANDSCAPING**

Block Paving, Tarmac, Concrete Drives,  
Paths, Patios, Gravel, Turfing,  
Walling Maintenance, Fences, Gates,  
Pergolas, Hedge Cutting,  
Pruning, Treework, Rubbish Removal,  
Mini Digger Work, Decking

**ALL AREAS COVERED SO CALL**

**01748 824861**

or

**07773 740611**

**FOR A FREE FAST QUOTE**





## **M.W Waste Services**

**Environmental & Drainage Specialists**

Septic Tanks Emptied & Cleaned  
Blocked Drains Cleared Fast  
Grease Traps & Interceptors Emptied  
Soakaways Rebuilt & Repaired  
Gully Emptying & Street Cleaning  
Refuse Collection  
Septic Tanks Installed  
High Pressure Drain Jetting  
Mobile Steam Cleaning  
Sewage Plant Maintenance  
Industrial & Domestic Work Carried Out

Low Hang Bank Depot  
Melsonby  
Richmond  
North Yorkshire  
DL10 5NQ

**Tel: 01325 377860/377850**  
24/7 Call Out  
[Http://www.mwwaste.co.uk](http://www.mwwaste.co.uk)

**Clear Your Blocked Drains Fast With Our High Pressure Jetter**  
Free Quotes & Estimates

**DRY STONE WALLING**  
Garden walls rebuilt etc.  
Telephone 07715 101289

**PRESSURE WASHING SERVICE**  
Paths, Patios, Flags, Driveways  
etc. telephone :  
07594 582245 (evenings)

**P.D. MARSH (ROD)**  
Sheep shearing and  
comb and cutter grinding service.  
Competitive rates.  
Tel. 07715101289

**Don't forget the Gazette  
is on line. Go to  
[www.2dales.org.uk](http://www.2dales.org.uk)**

***Ghyllfoot Pennyfarthing***  
*22 Ghyllfoot Pennyfarthing*

**ARE YOU A PEACOCK?**

The origin and  
achievements of the early  
Peacocks  
By David Morris

A booklet of interest to  
Peacocks everywhere

Available from Castle Hill Books,  
Richmond (£6.95 or £8.50 by post),  
The Tourist Information Centre,  
Swaledale Museum and Swaledale  
Woollens.

## *Chapel Home & Garden Services*

A friendly, reliable and efficient service  
for your home and garden maintenance.  
Services include general DIY, pressure  
washing, chipping, tree pruning, hedge  
trimming, rotavating and all year round  
garden care. Fully insured, with very  
competitive rates. All tasks for home  
and garden considered.

Contact Richard Eagle:  
The Old Chapel.



**THE REETH TEA DANCE**  
Thursday 19th August  
in the Reeth Memorial  
Hall. There will be 50/50  
dancing with live music from

the Mike Rose Band. All are welcome  
and admission is just £2, including light  
refreshments.

## **MO WALLIS ART- GLASS**

**Unique one-off sculptural pieces in stained &  
fused glass.**

**windows & door panels by commission.**

**Now one of the resident artists at**

**FARFIELD MILL**

**Art & Heritage Centre**

**Garsdale Road**

**Nr SEDBERGH.**

**OPEN 7 DAYS PER WEEK.**

**EMAIL [MOSARTGLASS@BTINTERNET.COM](mailto:MOSARTGLASS@BTINTERNET.COM)**

**WEB [WWW.MOWALLIS-ARTGLASS.CO.UK](http://WWW.MOWALLIS-ARTGLASS.CO.UK).**

**Tel. 01833 627607**

## **R. & W. GIBSON & SON Ltd.**

**CERAMIC WALL  
& FLOOR TILERS**

**SHOWROOM NOW OPEN**

**Monday - Friday**

**9.00 am - 4.30pm**

**Saturday 10 am - 1 pm**

**(or by appointment)**

**At Borough Road,**

**Gallowfields Trading Estate**

**DL10 4SX**

**Tel. 01748 - 822682 (Home)**

**Tel. 01748 - 821909 (Showroom)**

**“We cover the Dales”**

Whilst every endeavour is made to print  
everything received, sometimes there is just  
not sufficient space. It does help  
considerably by keeping to the of the  
deadline.

***D. J. OLNEY***

***Painter and  
Decorator  
Interior &  
Exterior  
call***

***01748 884065 or  
07 801 026 006***

**TO LET IN REETH**

2 bedroom flat in the centre of Reeth.  
Open plan living area over two levels  
Perfect location; ample parking  
Fantastic views.  
Available June.

For viewing or any other information  
please contact Emma on  
01748 880140 or 07967 018641.

**Neil Wilmore** Est 1988

**HND Landscape Design & Management**  
info@neilwilmore.co.uk

01969 624555

**Specialist landscape  
services**

**drystone walling  
hedge planting & laying  
tree planting  
grass seeding & turfing**



**www.neilwilmore.co.uk**

**FRIENDLY LOCAL SERVICE SINCE 1922**



**Bayford**

MANAGING FUEL & LUBRICANTS EFFICIENTLY

**For all your oil requirements for homes,  
business and agriculture**

**Supporting the community of Reeth**

HEATING OIL – KEROSENE/ GAS OIL

SIGNALMAN - AUTOMATIC OIL MONITORING

BAYFORD PAYMENT PLAN

TANKS & BOILER SERVICING

CALL THE SALES TEAM NOW ON

**01609 771 771**

Order online: **www.bayford.co.uk**

**THE OLD TEMPERANCE  
BOOKSHOP**

**Reeth, Richmond, DL11 6TE  
Tel. 01748 884185**

**Christian Books, Cards & Crafts**

**Beside the village  
green in Reeth, the  
'Capital of Swaledale',  
50 yards up from  
Reeth Evangelical  
Congregational Church**



**NEW  
NATIONAL BOOK TOKENS  
GIFT CARDS**

**Normal Opening times :**

**1.30pm - 4.00pm Mon., Thurs., Sat.  
10.30am - 4.00pm Fri. (Market Day)**

**Reeth Village Store**

We supply everything from locally baked Bread, Pastries, Cakes, Fresh Fruit & Vegetables, Dairy Produce, Soft Drinks, Ice Cream, Household Goods, Confectionery, Tobacco & Greeting Cards.



**CASH MACHINE INSTORE**

- Daily & Weekend Papers
- Fine selection of Wines & Spirits
- Ready to cook meals Indian & Chinese
- Latest Videos to rent

Proprietors **GUY & SUZANN**

Mon - Fri 7 am - 7.30 pm  
Saturday 7 am - 7 pm  
Sunday 8 am - 4 pm

Service with a 'SMILE'

TEL. 01748 884552 - Free Local Delivery

**ELECTRONIC PHONE CARD TOP UP**

RC

# RED WEB

**A locally based web design company, providing professional, stylish and affordable websites.**

**We offer a wide range of creative solutions**

- ◆ Full website design service
- ◆ Manage & update existing websites
- ◆ Advice on every aspect of the internet
- ◆ Multimedia production

To find out more, phone John on **01748 886545** or visit our website **www.redweb.red-film.co.uk**

Kim and Richard Atkinson

## THE BLACK BULL

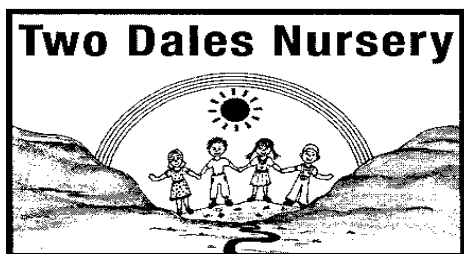


### REETH

WELCOME YOU TO  
The oldest Inn in Reeth  
Quality accommodation  
Excellent food  
(very popular Sunday Carvery)

A fine selection of Real Ales and Wines

And a warm welcome  
Tel. 01748 884213



This year there have been exciting developments to the 2 Dales Nursery outside area. Since the initial conception of the nursery, we have had to cope with disadvantages and difficulties of a hard surfaced sloping garden. The site has now been thoroughly redesigned by the County's architect to provide us with a series of level terraces and child high planters. This will enable us to provide stimulating and contrasting areas of activity for the children. The children and adults are already delighted with the potential it offers. A covered porch entrance has also been constructed to protect the adults and the children from the predictable Swaledale weather! We will be having an official opening party celebration at the beginning of the new school year. For our nursery trip this term we travelled to Tynemouth to have fun on the beach and visit the Sea Life Centre. We had a great day and would like to thank all the parents for their support for this trip and through out the last year. The nursery staff would like to wish all the children good luck and success in their new schools.

THIS YEAR AT REETH AND  
GUNNERSIDE SCHOOLS

The year has been a busy and successful

one for our pupils both in and out of school. Building work has resulted in a new Early Years outdoor area at the front of Reeth School, there are improved facilities inside school for staff and pupils and the new access to the school field makes playtimes even more fun. We welcomed Mrs. 'Charlie' Spensley to our staff at Easter. Coming from Askrigg School she is a Local Authority Leading Teacher for Early Years and we are all very pleased to have her on our EY team. At Gunnerside School there is building work going on to provide us with an additional small group teaching space as we are finding things too cramped there and need extra space for teaching and for our many musicians to practise and have lessons. Work will be completed by September. The children have been busy learning new skills, the parent assemblies using the video link between the two schools have allowed parents to come in and share in the many exciting curriculum activities that have taken place. Information evenings have been held for parents to help them understand the new methods and content we teach and an exciting Arts Week has culminated in an exhibition at Hudson House and a further one is planned at Muker. We were delighted with the support we have had from parents this year, with many coming into school to share their skills in the arts, craft activities, costume and scenery making and cooking. We are very grateful to the number of parent (and grandparent) helpers who come into school regularly to support the children's learning.

*Cont. on page 38*

*Cont. from page 37 :* We have persuaded both the Chairs of Governors to come into school and teach a lesson - sharing their respective environmental and citizenship skills with the children. In sport we have taken part in a wide range of activities including Football, Cricket, Rounders, Cross Country and Swimming. Our children's sense of fair play has complemented the many successes we have had. Out of school we have two pupils who are currently competing at their chosen sport at national level and we wish them well for the future. The year has come to a close with a fantastic production of the environmental musical 'Yanomamo' which has involved every child in the school in song, dance and narration and which played to great acclaim over two evenings. Well done children! I would like to thank all pupils, parents, staff and friends who have made this year such a success for our schools. Linda Cork Headteacher.



## TWO DALES FOOTBALL

On 20<sup>th</sup> June, on a fine Sunday evening, Reeth Memorial Hall was full for our presentation night. We welcomed Goff Wilson, retired Headteacher of Reeth School, who presented our awards. Starting with the youngest, these went to: Under 7 Player of the year James Metcalfe Under 8

Player of the year George Smith Under 10 Girls Most improved player C h l o e Johnson

Goalscorer of the year Zoe Ralston Under 10 Boys Most improved player, Ben Webster Goalscorer of the year Nathan Tulip (31 goals) Under 12 Girls Most improved player Emily Hughes Goalscorer of the year Zoe Ralston Player of the year Marie Teasdale Under 12 Boys Medals Nick Lanier, Dan Storr, Harry Potter. Under 14 Girls Most improved player Isla Teasdale Goalscorer of the year Lucy Porter Player of the year Jasmine Guy Under 14 Boys Most improved player Peter While Goalscorer of the year Adam Simpson. Chairman's Awards Nick Lanier, Dan Storr, Harry Potter, Sean Lord, Scott Alderson, Khalian Deighton, George Spiers Trophy Arkengarthdale and Gunnerside Matthew Short (Shortie) Under 10 Girls Player of the year Gunnerside Estate Trophy Jessica Johnson Overall Player of the year - Ice Cream Parlour Trophy Dan Longden. Mr Wilson then addressed the players, parents and supporters for a few minutes and reminisced that at one time Reeth School always lost to Leyburn who had the Dawson brothers playing - one of whom is presently in the World Cup squad while the others play at the highest level. Local lads can do well. We look forward to the new season and our super new facilities which should be available before Christmas. We urgently need someone to help coach the 5 to 8 age group otherwise we cannot provide football to them next season. Please come and support these youngsters. We also welcome new players particularly in the Under 12 Boys squad (school years 6 and 7) so we can enter a team in the League.

# **Blenkiron & Son**



**Building & Joinery  
Contractor**  
Specialists in  
restoration &  
renovation of Dales  
properties, roof repairs  
to complete re - roofs,  
stonework, extensions,  
plastering & all  
ancillary works  
undertaken by  
qualified local  
craftsmen.

**Orton Works, Reeth**  
**Tel. 01748 884236**  
Serving the dales  
since 1911



Telephone: (01748) 886277  
[www.keartoncountryhotel.co.uk](http://www.keartoncountryhotel.co.uk)

Evening Seasonal À La Carte Menu  
Available 18:30 - 20:00

Full Vegetarian A La Cart Menu  
Available

See Our Web Site For Up-to Date Menu  
To Avoid Disappointment Bookings  
Advisable

" " "

Morning Coffees, Lunch And  
Light Snacks  
Available Through Out The Day.

" " "

Recently Refurbished En-suite Rooms.

" " "

Gift Shop.

A Warm Welcome Awaits.  
For Enquiries Or Booking  
Please Feel Free To Call on  
(01748) 886277

Or Visit

[www.keartoncountryhotel.co.uk](http://www.keartoncountryhotel.co.uk)

Langthwaite - Arkengarthdale

**RED LION INN**

Free House — Real Ales — Bar Snacks

Books &amp; Maps

Tel. 01748 884218

**TREVOR J. HIRD**

ELECTRICAL CONTRACTOR

No job too small - - *FREE* estimates

Reduced rates for Senior citizens

Telephone 01748 884544

**STUBBS ELECTRICAL***Your Local Electrical Service*

- Rewires/alterations
- Showers/storage heaters
- Fire alarms/emergency lights
- Underfloor heating
- Fault finding
- Landlords' certificates
- PAT testing
- Energy saving advice

Contact Stephen on:

T: 01748 822907

M: 07980 130014

E: [stephen@stubbselectrical.co.uk](mailto:stephen@stubbselectrical.co.uk)

NORMAN F. BROWN

CHARTERED SURVEYORS & ESTATE  
AGENTS**SALES - LETTINGS - MANAGEMENT****FREE 'NO OBLIGATION'****MARKET APPRAISAL****AVAILABLE UPON REQUEST**14 Queens Road, Richmond, North Yorkshire,  
DL10 4AG**Tel: (01748) 822473/822967**[www.normanfbrown.co.uk](http://www.normanfbrown.co.uk)

THERE IS ONLY ONE

**WHITE HOUSE**

ANVIL SQUARE, REETH

Tel : 01748 884763

**M. GUY - PLUMBING**For all your  
plumbing requirements  
AGA'S & RAYBURN'S  
SERVICED

Tel: 01748 - 825640

To advertise  
in the Gazette  
please contact the Editor

On 01748 886505

Or 01748 886111

Or email :

[GML1@gallowstop.fsnet.co.uk](mailto:GML1@gallowstop.fsnet.co.uk)**Ian Heugh****METAL and  
RECYCLING  
AGENTS**Hillcrest, Harmby  
(on the A684 Bedale Road)

Your local

'Scrap Metal Merchants'  
ELVCars and all scrap  
metals wanted so give  
us a call on

01969 622284

01677 450609

**REMEMBER OUR TWO LOCAL  
AGRICULTURAL SHOWS!****REETH SHOW****Wednesday August 25th****and****MUKER SHOW****Wednesday September 1st.**